

Supporting Information

Phase-shifted PFH@PLGA/Fe₃O₄ Nanocapsules for MRI/US Imaging and Photothermal Therapy with Near-infrared Irradiation

Yajing Zhao^a, Weixiang Song^a, Dong Wang^b, Haitao Ran^a, Ronghui Wang^a, Yuanzhi Yao^a, Zhigang Wang^a, Yuanyi Zheng^{a}, Pan Li^{a*}*

^a Second Affiliated Hospital, Institute of Ultrasound Imaging, Chongqing Medical University, Chongqing, 400010, P.R. China

^b Department of ultrasound, Ministry of Education Key Laboratory of Child Development and Disorders, Children's Hospital of Chongqing Medical University, Chongqing, 400014, P.R. China

* Corresponding author:

Prof. Pan Li, Prof. Yuanyi Zheng

Second Affiliated Hospital, Institute of Ultrasound Imaging, Chongqing Medical University,

Linjiang Road 76, Chongqing, 400010, P.R. China

E-mail: cqlipan@163.com (Pan Li), zhengyuanyi@gmail.com (Y.Y Zheng)

Table S1. The corresponding amount of Fe₃O₄ and mean signal intensity of MRI for groups of deionized water, pure nanoparticles and the PFH@PLGA/Fe₃O₄ nanocapsules with different iron concentration. Six replicates are measured for each sample. Data are presented as mean ± standard deviation.

Samples	Fe ₃ O ₄ concentration	Signal intensity(SI)	
Group I	Deionized water	0µg/mL	1988.55±12.25 [#]
Group II	Pure PLGA	0µg/mL	1352.85±19.51 [*]
Group III	PFH@PLGA/Fe ₃ O ₄	0.64±0.09µg/mL	1244.23±25.64 ^{*#}
Group IV	PFH@PLGA/Fe ₃ O ₄	1.39±0.09µg/mL	1125.23±12.22 ^{*#}
Group V	PFH@PLGA/Fe ₃ O ₄	2.66±0.30µg/mL	1067.54±16.33 ^{*#}
Group VI	PFH@PLGA/Fe ₃ O ₄	5.78±0.68µg/mL	843.65±14.67 ^{*#}
Group VII	PFH@PLGA/Fe ₃ O ₄	10.76±1.26µg/mL	562.99±8.57 ^{*#}
Group VIII	PFH@PLGA/Fe ₃ O ₄	21.49±0.75µg/mL	395.58±8.73 ^{*#}
Group IX	PFH@PLGA/Fe ₃ O ₄	30.00±1.27µg/mL	202.17±4.46 ^{*#}
Group X	PFH@PLGA/Fe ₃ O ₄	55.55±1.24µg/mL	48.99±2.02 ^{*#}
Group XI	PFH@PLGA/Fe ₃ O ₄	117.11±2.10µg/mL	39.76±1.21 ^{*#}
Group XII	PFH@PLGA/Fe ₃ O ₄	247.30±1.68µg/mL	33.56±1.20 ^{*#}

* indicated $p < 0.05$ compared with the Deionized water group.

indicated $p < 0.05$ compared with the Pure Nanoparticles group.

Table S2. Different temperature of nude mouse tumor tissue changes with the extended time in different groups at the fixed height of 15cm. Group I: Pure PLGA nanoparticles. Group II: PFH@PLGA nanocapsules; Group III: Fe₃O₄@PLGA nanocapsules; Group IV: PFH@PLGA/Fe₃O₄ nanocapsules;

Time/Group	PLGA	PFH@PLGA	Fe ₃ O ₄ @PLGA	PFH@PLGA/Fe ₃ O ₄
0min	31±0°C	31±0°C	31±0°C	31±0°C
1min	31.96±0.56°C	31.81±0.34°C	35.57±1.05°C	36.24±1.1°C
2min	32.66±0.77°C	33.85±0.72°C	40.12±1.35°C	41.26±2.72°C
3min	33.32±0.63°C	34.68±0.78°C	44.7±1.57°C	45.35±1.92°C
4min	33.48±0.82°C	35.1±1.06°C	47.13±2.36°C	49.01±2.45°C
5min	34.56±0.91°C	36.12±1.36°C	50.41±2.57°C	51.18±1.91°C
6min	35.5±0.65°C	36.7±0.86°C	51.56±2.82°C	53.17±1.81°C
7min	35.92±1.02°C	37.65±0.89°C	53.04±3.42°C	55.1±1.48°C
8min	37.58±1.35°C	38.29±0.75°C	55.45±2.56°C	56.76±2.1°C
9min	37.84±1.03°C	38.76±0.92°C	57.36±1.32°C	57.76±1.25°C
10min	38.79±0.74°C	39.05±0.8°C	57.64±1.37°C	58.81±0.9°C
11min	39.44±1.38°C	39.15±0.85°C	59.42±0.85°C	59.83±1.55°C
12min	40.15±1.5°C	40.66±1.47°C	60.76±0.74°C	60.19±1.39°C

Table S3. Temperature is increased as the extension of the irradiation time at the fixed depth (3cm, 6cm, 9cm, 12cm, 15cm, 18cm) and decreased along with the increment of the irradiation depth at the fixed irradiation time (1min, 2min, 3min, 4min, 5min,6min).

Time/Height	3cm	6cm	9cm	12cm	15cm	18cm
0min	37±0°C	37±0°C	37±0°C	37±0°C	37±0°C	37±0°C
1min	56.38±1.46°C	53.88±1.44°C	52.34±1.82°C	51.78±1.09°C	50.7±1.62°C	44.4±1.93°C
2min	61.48±1.59°C	59.04±1.4°C	55.06±2.07°C	55.54±1.84°C	53.54±1.63°C	49.62±1.36°C
3min	64.66±1.27°C	62.74±0.87°C	59.68±0.93°C	58.18±1.33°C	56.22±1.39°C	50.88±0.90°C
4min	65.5±1.49°C	63.28±1.57°C	61.28±1.65°C	60.52±1.22°C	57.1±1.41°C	52.34±1.40°C
5min	66.46±1.42°C	64.44±1.69°C	62.52±0.58°C	61.56±1.32°C	57.8±1.52°C	53.4±1.64°C
6min	68.2±0.64°C	66.26±0.69°C	63.44±1.48°C	62.56±1.44°C	59.84±1.30°C	54.84±1.05°C

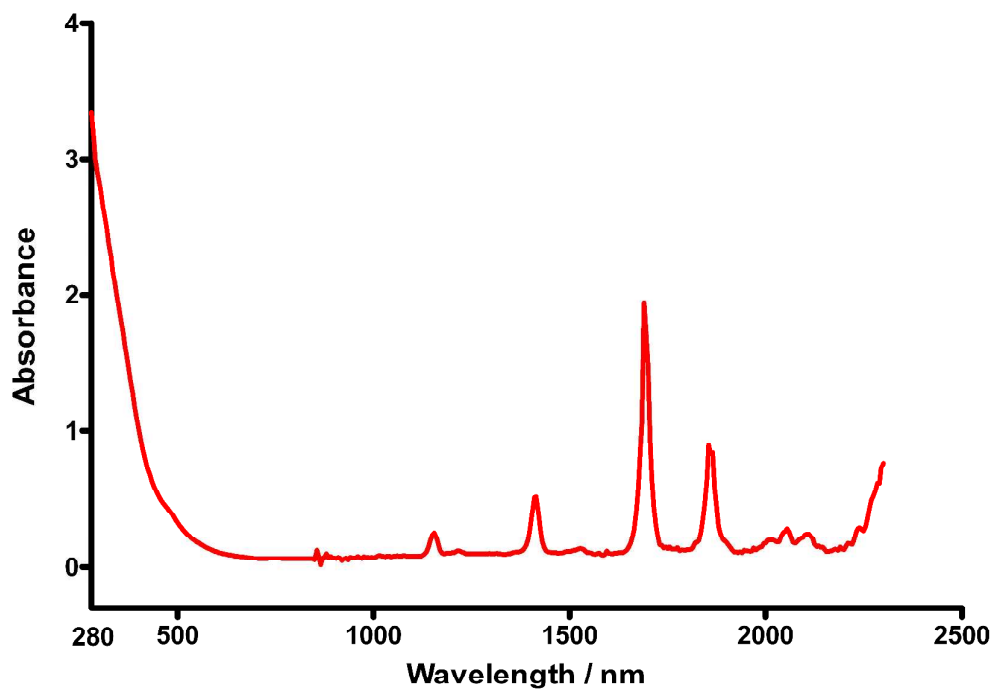


Figure S1. UV-Vis-NIR absorbance spectra of PFH@PLGA/Fe₃O₄ solutions. PFH@PLGA/Fe₃O₄ nanocapsules exhibit a broad absorption ranging from UV to NIR region which was shown in the absorption spectra.

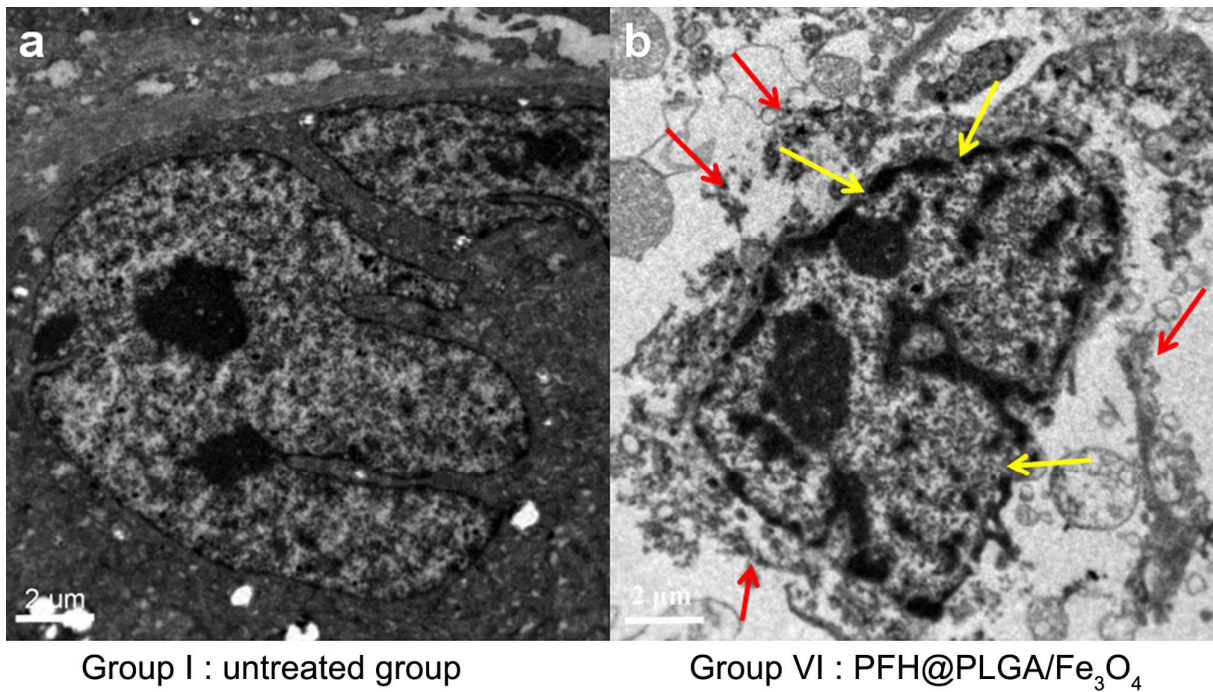


Figure S2. (a) TEM analysis of cells in group I. Cell structure was normal and clear, and cell and nuclear membranes were intact. (b) TEM analysis of cells in group VI. Most cell membranes ruptured, nuclear membranes disintegrated (karyorrhexis) (yellow arrows), some cytoplasm dissolved (red arrows), and organelles disappeared. Magnification, $\times 6000$, Scale bar: 2 μm .