

Quantitative Study of the Interfacial Adsorption of Cellulase to Cellulose

Supporting Information

*Gang Hu,^{*a,b} John A. Heitmann,^b Biao Zhong,^c Lucian A. Lucia,^{b,d,e} Dimitris S. Argyropoulos^b*

^a Shanghai Advanced Research Institute, Chinese Academy of Sciences, 99 Haike Road, Zhangjiang Hi-tech Zone, Shanghai 201210, China

^b Department of Forest Biomaterials, North Carolina State University, Campus Box 8005, Raleigh NC27695-8005, the United States of America

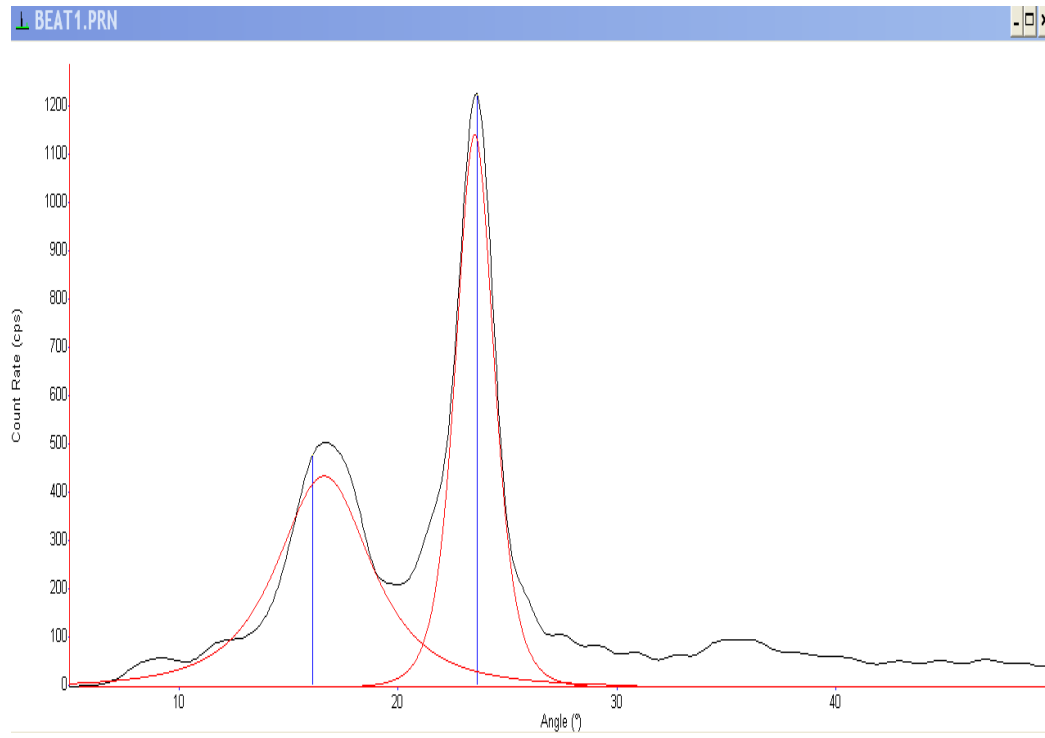
^c Jiangsu Key Laboratory of Public Project Audit, School of Technology, Nanjing Audit University, Nanjing, Jiangsu Province 211815, China

^d Key Laboratory of Pulp & Paper Science and Technology, College of Paper & Plant Resources Engineering, Qilu University of Technology, Jinan 250353, China

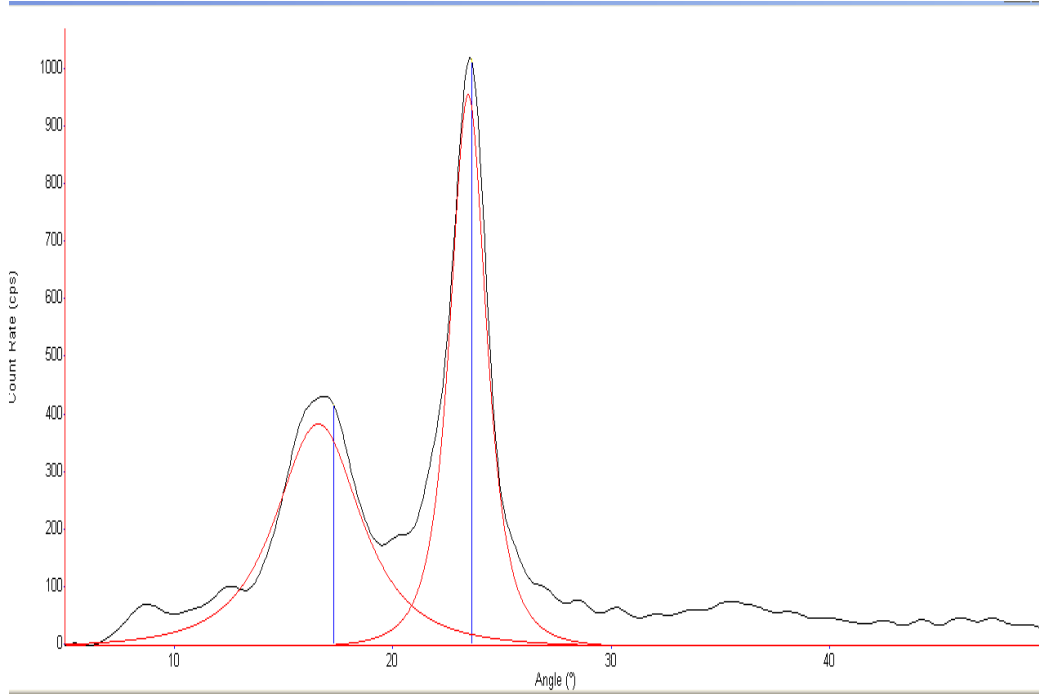
^e Department of Chemistry, North Carolina State University, Campus Box 8204, Raleigh NC27695-8204, the United States of America

1. XRD spectra of all cellulose substrates

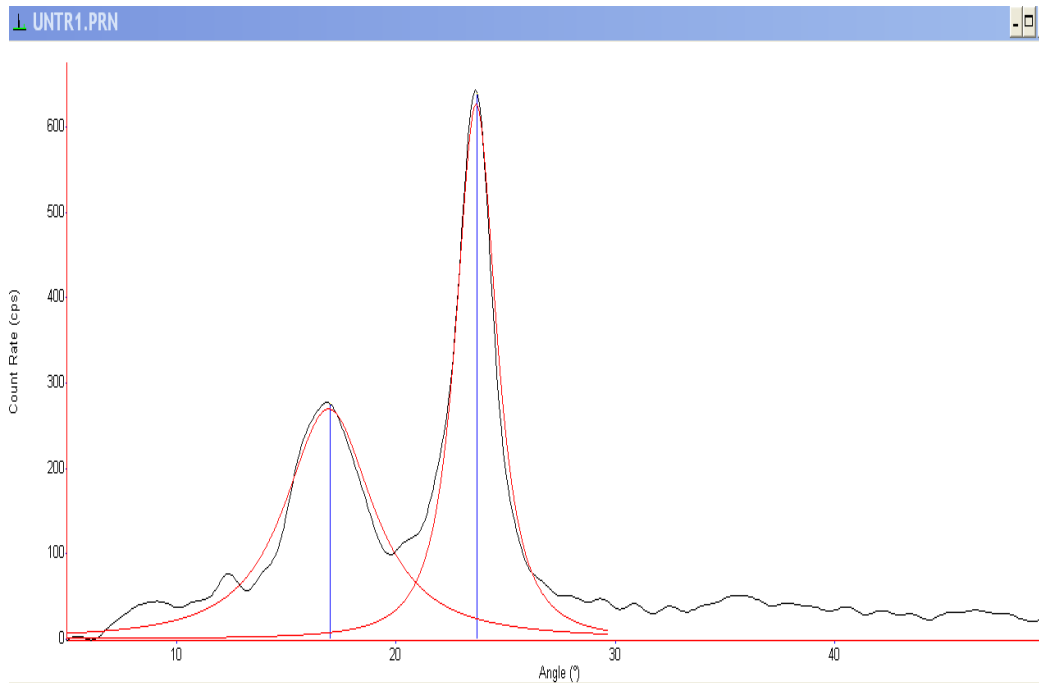
1) Beaten pulp



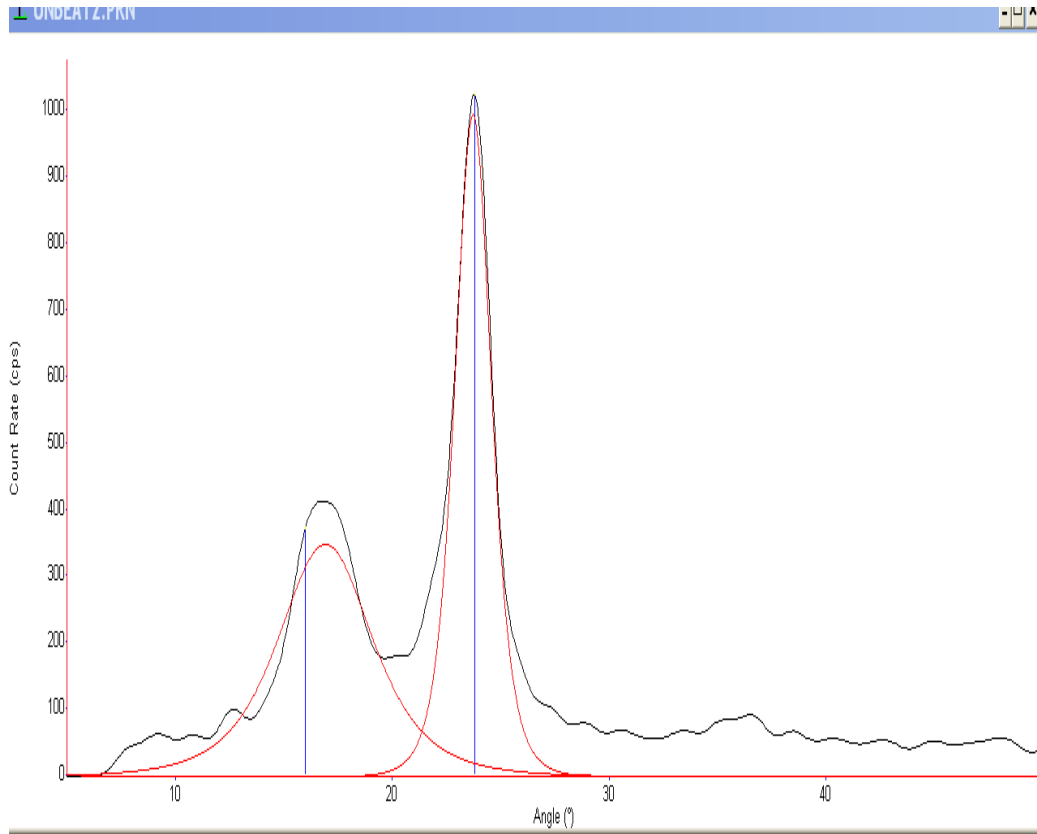
2) Beaten pulp



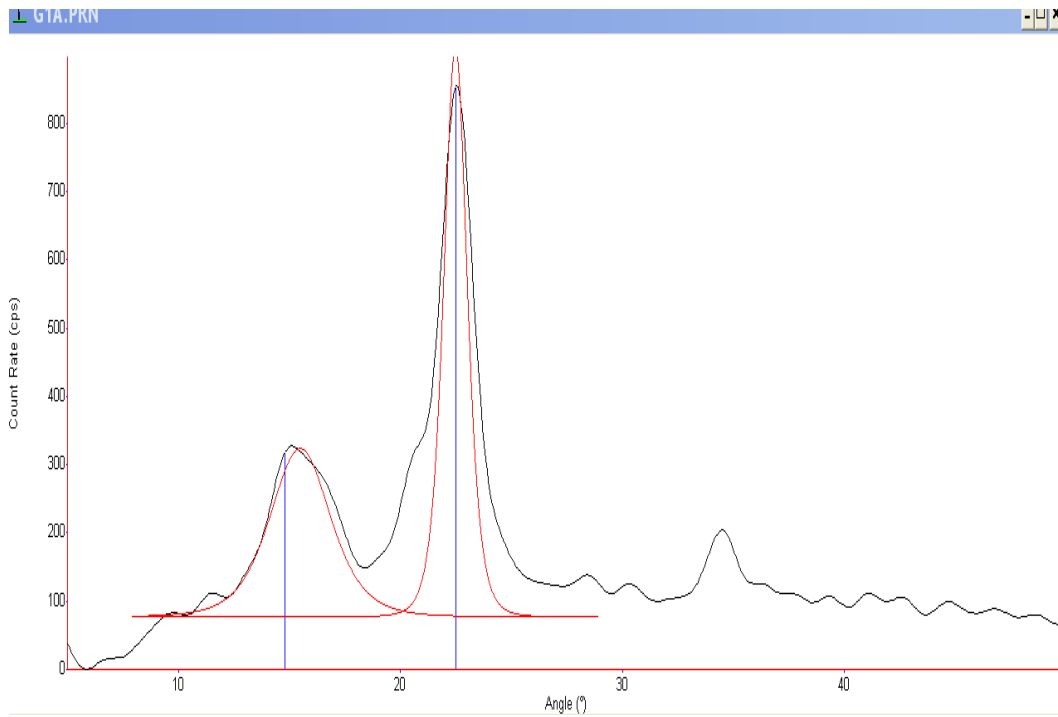
3) Unbeaten Pulp



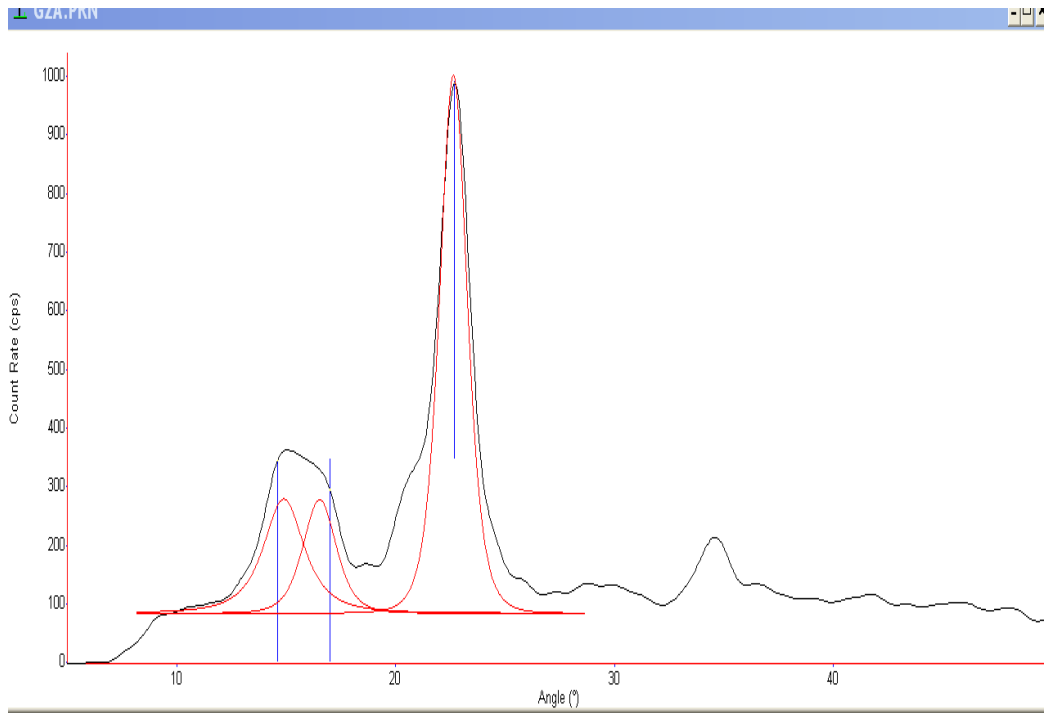
4) Unbeaten Pulp



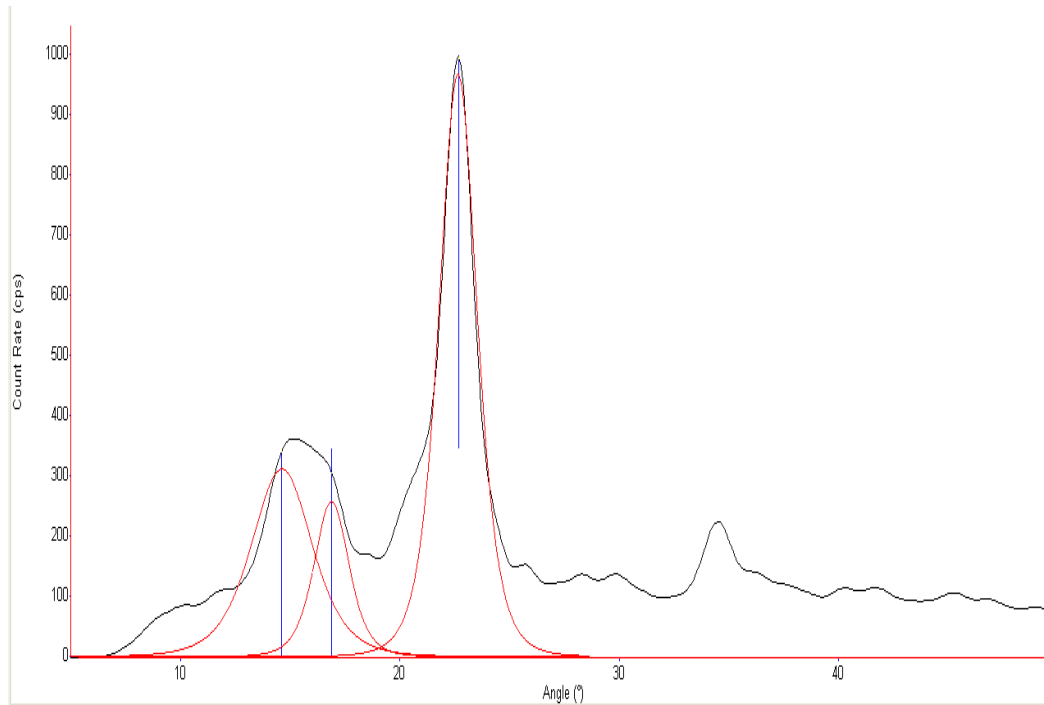
5) MCC PH 101



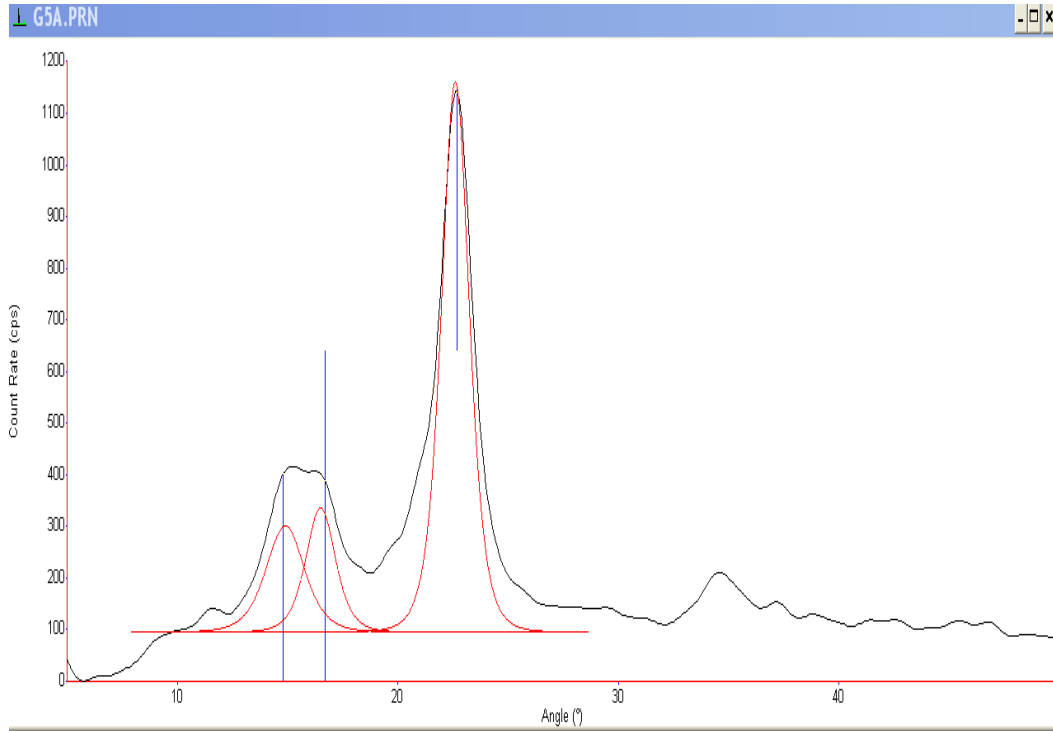
6) MCC PH102



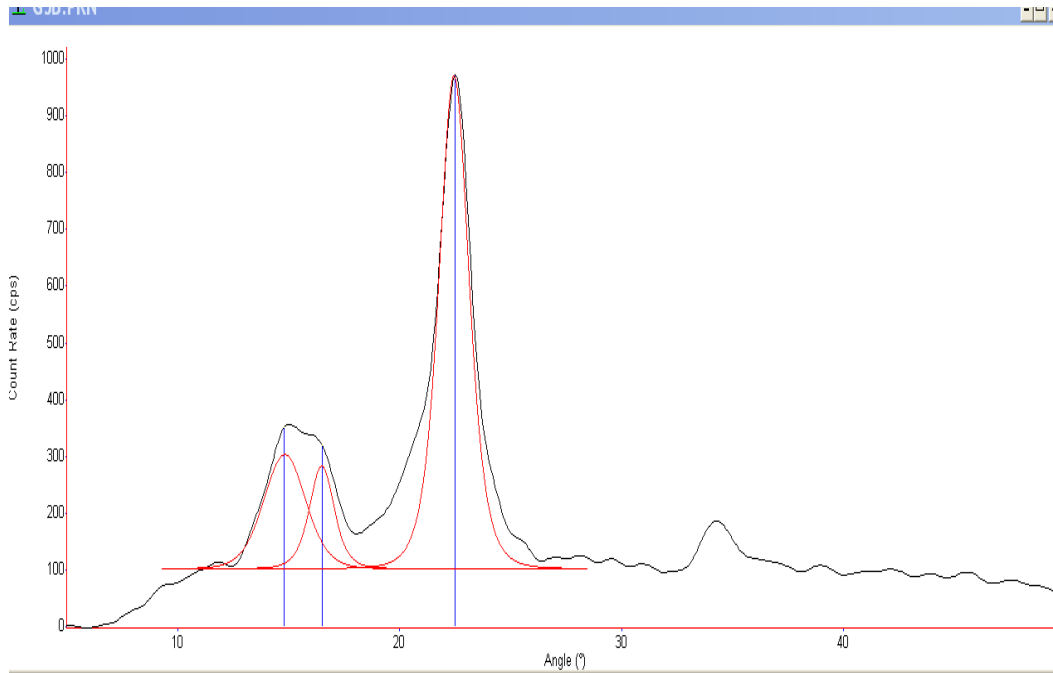
7) MCC PH102



8) MCC PH105



9) MCC PH105



2. A_{\max} for surface area measurement by Congo red method

	MCC PH101		MCC PH102		MCC PH105		Unbeaten HW		Beaten HW	
	A_{\max} by Congo red method	3.504	4.435	3.13	4.379	4.313	5.154	6.214	9.017	15.62