

Supporting Information

On the Role of Zwitterions in Kindling Fluorescent Protein Photochemistry

Vladimir A. Mironov,[†] Ksenia B. Bravaya,[‡] Alexander V. Nemukhin^{*†§}

[†] Department of Chemistry, M.V. Lomonosov Moscow State University, Leninskie Gory 1/3, Moscow, 119991, Russian Federation

[‡] Department of Chemistry, Boston University, Boston, MA 02215, USA

[§] N.M. Emanuel Institute of Biochemical Physics, Russian Academy of Sciences, Kosygina 4, Moscow, 119334, Russian Federation

Tables containing all computed bond lengths and bond orders (Table S1, S2) and atomic charges (Table S3). Numbering of atoms (different from that used in Fig.1 of the main text) is clarified in Fig. S1.

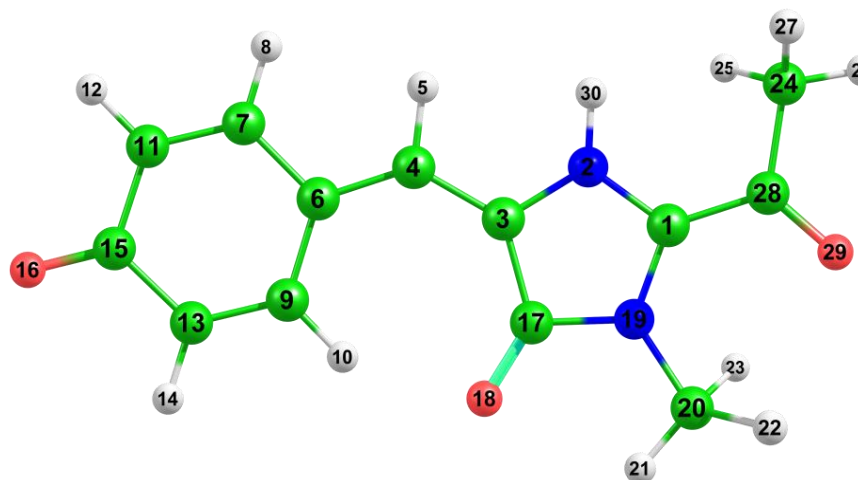


Figure S1. Numbering of atoms used in Tables S1-S3.

Table S1. Bond parameters of the equilibrium structures computed in the XMCQDPT2 approach.

| Atom 1 | Atom 2 | Anion, optimized on S ₀ | | | Anion, optimized on S ₁ | | | Zwitterion, optimized on S ₀ | | | Zwitterion, optimized on S ₁ | | |
|--------|--------|------------------------------------|----------------|----------------|------------------------------------|----------------|----------------|---|----------------|----------------|---|----------------|----------------|
| | | length, Å | bond order | | length, Å | bond order | | length, Å | Bond order | | length, Å | bond order | |
| | | | S ₀ | S ₁ | | S ₀ | S ₁ | | S ₀ | S ₁ | | S ₀ | S ₁ |
| 1 | 2 | 1.342 | 1.489 | 1.353 | 1.356 | 1.465 | 1.359 | 1.368 | 1.205 | 1.075 | 1.403 | 1.141 | 1.070 |
| 1 | 19 | 1.386 | 1.047 | 1.053 | 1.390 | 1.036 | 1.035 | 1.372 | 1.113 | 1.070 | 1.376 | 1.190 | 1.130 |
| 1 | 28 | 1.456 | 1.057 | 1.086 | 1.456 | 1.064 | 1.095 | 1.450 | 1.040 | 1.127 | 1.455 | 1.026 | 1.078 |
| 2 | 3 | 1.381 | 1.310 | 1.332 | 1.398 | 1.287 | 1.261 | 1.370 | 1.164 | 1.032 | 1.457 | 1.061 | 0.975 |
| 2 | 30 | - | - | - | - | - | - | 1.017 | 0.946 | 0.951 | 1.027 | 0.927 | 0.936 |
| 3 | 4 | 1.415 | 1.339 | 1.248 | 1.406 | 1.374 | 1.356 | 1.427 | 1.171 | 1.403 | 1.403 | 1.285 | 1.485 |
| 3 | 17 | 1.476 | 1.068 | 1.018 | 1.496 | 1.043 | 0.996 | 1.476 | 1.082 | 1.032 | 1.457 | 1.102 | 1.065 |
| 4 | 5 | 1.101 | 0.941 | 0.943 | 1.099 | 0.942 | 0.943 | 1.101 | 0.944 | 0.944 | 1.100 | 0.948 | 0.947 |
| 4 | 6 | 1.402 | 1.429 | 1.194 | 1.462 | 1.362 | 1.091 | 1.390 | 1.516 | 1.113 | 1.456 | 1.391 | 1.145 |
| 6 | 7 | 1.445 | 1.175 | 1.243 | 1.448 | 1.175 | 1.265 | 1.456 | 1.157 | 1.248 | 1.431 | 1.193 | 1.257 |
| 6 | 9 | 1.445 | 1.211 | 1.249 | 1.411 | 1.275 | 1.340 | 1.454 | 1.184 | 1.274 | 1.427 | 1.224 | 1.286 |
| 7 | 8 | 1.098 | 0.971 | 0.972 | 1.099 | 0.973 | 0.973 | 1.097 | 0.974 | 0.974 | 1.097 | 0.975 | 0.975 |
| 7 | 11 | 1.374 | 1.608 | 1.496 | 1.390 | 1.595 | 1.475 | 1.365 | 1.740 | 1.639 | 1.386 | 1.694 | 1.623 |
| 9 | 10 | 1.094 | 0.943 | 0.943 | 1.093 | 0.944 | 0.944 | 1.093 | 0.942 | 0.943 | 1.092 | 0.948 | 0.949 |
| 9 | 13 | 1.375 | 1.702 | 1.666 | 1.402 | 1.638 | 1.576 | 1.367 | 1.741 | 1.642 | 1.389 | 1.696 | 1.626 |
| 11 | 12 | 1.096 | 0.971 | 0.972 | 1.098 | 0.972 | 0.972 | 1.094 | 0.970 | 0.970 | 1.096 | 0.971 | 0.971 |
| 11 | 15 | 1.468 | 1.096 | 1.137 | 1.467 | 1.101 | 1.143 | 1.477 | 1.080 | 1.141 | 1.463 | 1.105 | 1.157 |
| 13 | 14 | 1.096 | 0.972 | 0.971 | 1.098 | 0.972 | 0.972 | 1.095 | 0.970 | 0.970 | 1.096 | 0.971 | 0.971 |
| 13 | 15 | 1.468 | 1.107 | 1.120 | 1.457 | 1.132 | 1.157 | 1.476 | 1.078 | 1.138 | 1.463 | 1.102 | 1.154 |
| 15 | 16 | 1.248 | 1.835 | 1.778 | 1.271 | 1.787 | 1.717 | 1.237 | 1.830 | 1.663 | 1.266 | 1.753 | 1.615 |
| 17 | 18 | 1.242 | 1.820 | 1.812 | 1.241 | 1.833 | 1.834 | 1.230 | 1.861 | 1.899 | 1.235 | 1.861 | 1.897 |
| 17 | 19 | 1.410 | 1.118 | 1.123 | 1.408 | 1.123 | 1.128 | 1.420 | 1.111 | 1.080 | 1.445 | 1.048 | 1.005 |
| 19 | 20 | 1.448 | 0.962 | 0.963 | 1.451 | 0.956 | 0.957 | 1.459 | 0.926 | 0.928 | 1.457 | 0.917 | 0.920 |
| 20 | 21 | 1.101 | 0.972 | 0.972 | 1.102 | 0.972 | 0.972 | 1.099 | 0.972 | 0.972 | 1.100 | 0.970 | 0.970 |
| 20 | 22 | 1.100 | 0.983 | 0.982 | 1.100 | 0.983 | 0.982 | 1.098 | 0.982 | 0.982 | 1.099 | 0.979 | 0.980 |
| 20 | 23 | 1.100 | 0.983 | 0.982 | 1.100 | 0.983 | 0.982 | 1.098 | 0.981 | 0.982 | 1.100 | 0.978 | 0.979 |
| 24 | 25 | 1.101 | 0.967 | 0.967 | 1.099 | 0.969 | 0.969 | 1.103 | 0.970 | 0.970 | 1.106 | 0.968 | 0.967 |
| 24 | 26 | 1.100 | 0.976 | 0.976 | 1.105 | 0.969 | 0.969 | 1.098 | 0.973 | 0.972 | 1.100 | 0.972 | 0.972 |
| 24 | 27 | 1.101 | 0.967 | 0.967 | 1.106 | 0.968 | 0.968 | 1.103 | 0.970 | 0.970 | 1.103 | 0.969 | 0.968 |
| 24 | 28 | 1.522 | 1.042 | 1.042 | 1.523 | 1.039 | 1.040 | 1.521 | 1.038 | 1.038 | 1.518 | 1.041 | 1.042 |
| 28 | 29 | 1.241 | 1.983 | 1.953 | 1.252 | 1.961 | 1.930 | 1.238 | 1.885 | 1.768 | 1.252 | 1.861 | 1.789 |

Table S2. Bond parameters of the equilibrium structures computed in the CASSCF approach.

| Atom 1 | Atom 2 | Anion, optimized on S ₀ | | | Anion, optimized on S ₁ | | | Zwitterion, optimized on S ₀ | | | Zwitterion, optimized on S ₁ | | |
|--------|--------|------------------------------------|----------------|----------------|------------------------------------|----------------|----------------|---|----------------|----------------|---|----------------|----------------|
| | | length, Å | bond order | | length, Å | bond order | | length, Å | Bond order | | length, Å | bond order | |
| | | | S ₀ | S ₁ | | S ₀ | S ₁ | | S ₀ | S ₁ | | S ₀ | S ₁ |
| 1 | 2 | 1.305 | 1.547 | - | 1.346 | - | 1.301 | 1.334 | 1.259 | - | 1.372 | - | 1.142 |
| 1 | 19 | 1.388 | 1.040 | - | 1.383 | - | 1.046 | 1.360 | 1.129 | - | 1.346 | - | 1.196 |
| 1 | 28 | 1.458 | 1.027 | - | 1.439 | - | 1.110 | 1.463 | 1.011 | - | 1.463 | - | 1.030 |
| 2 | 3 | 1.374 | 1.279 | - | 1.349 | - | 1.400 | 1.367 | 1.167 | - | 1.457 | - | 0.944 |
| 2 | 30 | - | - | - | - | - | - | 0.998 | 0.947 | - | 1.004 | - | 0.939 |
| 3 | 4 | 1.420 | 1.307 | - | 1.444 | - | 1.198 | 1.440 | 1.147 | - | 1.370 | - | 1.552 |
| 3 | 17 | 1.452 | 1.107 | - | 1.484 | - | 0.999 | 1.449 | 1.120 | - | 1.454 | - | 1.065 |
| 4 | 5 | 1.085 | 0.935 | - | 1.082 | - | 0.945 | 1.086 | 0.935 | - | 1.085 | - | 0.937 |
| 4 | 6 | 1.382 | 1.495 | - | 1.434 | - | 1.208 | 1.369 | 1.611 | - | 1.447 | - | 1.187 |
| 6 | 7 | 1.454 | 1.147 | - | 1.431 | - | 1.252 | 1.469 | 1.093 | - | 1.425 | - | 1.259 |
| 6 | 9 | 1.455 | 1.169 | - | 1.442 | - | 1.213 | 1.467 | 1.119 | - | 1.424 | - | 1.278 |
| 7 | 8 | 1.084 | 0.970 | - | 1.085 | - | 0.971 | 1.083 | 0.972 | - | 1.084 | - | 0.972 |
| 7 | 11 | 1.356 | 1.644 | - | 1.381 | - | 1.482 | 1.332 | 1.819 | - | 1.355 | - | 1.638 |
| 9 | 10 | 1.079 | 0.942 | - | 1.077 | - | 0.951 | 1.078 | 0.946 | - | 1.077 | - | 0.956 |
| 9 | 13 | 1.344 | 1.752 | - | 1.351 | - | 1.705 | 1.334 | 1.817 | - | 1.356 | - | 1.651 |
| 11 | 12 | 1.083 | 0.972 | - | 1.083 | - | 0.970 | 1.081 | 0.970 | - | 1.081 | - | 0.970 |
| 11 | 15 | 1.471 | 1.079 | - | 1.450 | - | 1.157 | 1.478 | 1.059 | - | 1.452 | - | 1.142 |
| 13 | 14 | 1.083 | 0.971 | - | 1.084 | - | 0.969 | 1.081 | 0.970 | - | 1.081 | - | 0.969 |
| 13 | 15 | 1.468 | 1.087 | - | 1.462 | - | 1.113 | 1.477 | 1.058 | - | 1.453 | - | 1.134 |
| 15 | 16 | 1.221 | 1.881 | - | 1.236 | - | 1.792 | 1.213 | 1.908 | - | 1.236 | - | 1.733 |
| 17 | 18 | 1.221 | 1.852 | - | 1.215 | - | 1.854 | 1.211 | 1.893 | - | 1.201 | - | 1.933 |
| 17 | 19 | 1.389 | 1.125 | - | 1.376 | - | 1.152 | 1.396 | 1.117 | - | 1.421 | - | 0.997 |
| 19 | 20 | 1.442 | 0.974 | - | 1.446 | - | 0.959 | 1.457 | 0.926 | - | 1.457 | - | 0.921 |
| 20 | 21 | 1.087 | 0.973 | - | 1.086 | - | 0.974 | 1.084 | 0.972 | - | 1.084 | - | 0.972 |
| 20 | 22 | 1.090 | 0.983 | - | 1.088 | - | 0.982 | 1.086 | 0.983 | - | 1.086 | - | 0.980 |
| 20 | 23 | 1.090 | 0.983 | - | 1.088 | - | 0.983 | 1.087 | 0.983 | - | 1.086 | - | 0.979 |
| 24 | 25 | 1.084 | 0.969 | - | 1.085 | - | 0.970 | 1.092 | 0.969 | - | 1.094 | - | 0.965 |
| 24 | 26 | 1.092 | 0.969 | - | 1.092 | - | 0.968 | 1.087 | 0.970 | - | 1.087 | - | 0.970 |
| 24 | 27 | 1.092 | 0.968 | - | 1.093 | - | 0.967 | 1.092 | 0.969 | - | 1.091 | - | 0.967 |
| 24 | 28 | 1.516 | 1.043 | - | 1.515 | - | 1.048 | 1.514 | 1.041 | - | 1.509 | - | 1.050 |
| 28 | 29 | 1.205 | 2.032 | - | 1.215 | - | 1.960 | 1.210 | 1.942 | - | 1.220 | - | 1.853 |

Table S3. Mulliken atom charges at the equilibrium structures.

| Atom | Anion | | | | Zwitterion | | | |
|------|--------------------------|----------------|--------------------------|----------------|--------------------------|----------------|--------------------------|----------------|
| | S ₀ optimized | | S ₁ optimized | | S ₀ optimized | | S ₁ optimized | |
| | S ₀ | S ₁ | S ₀ | S ₁ | S ₀ | S ₁ | S ₀ | S ₁ |
| 1 | 0.240 | 0.225 | 0.243 | 0.219 | 0.296 | 0.369 | 0.321 | 0.358 |
| 2 | -0.300 | -0.318 | -0.305 | -0.333 | -0.211 | -0.324 | -0.271 | -0.337 |
| 3 | -0.203 | -0.001 | -0.170 | -0.005 | -0.023 | -0.012 | -0.066 | -0.095 |
| 4 | 0.128 | 0.038 | 0.104 | 0.045 | 0.056 | 0.105 | 0.044 | 0.118 |
| 5 | 0.006 | 0.005 | 0.013 | 0.012 | 0.026 | 0.026 | 0.035 | 0.034 |
| 6 | -0.185 | -0.137 | -0.175 | -0.143 | -0.128 | -0.119 | -0.111 | -0.134 |
| 7 | 0.051 | 0.015 | 0.038 | 0.013 | 0.033 | 0.018 | 0.026 | 0.019 |
| 8 | -0.012 | -0.013 | -0.008 | -0.008 | 0.022 | 0.022 | 0.023 | 0.023 |
| 9 | 0.025 | -0.002 | 0.022 | -0.005 | 0.008 | -0.001 | 0.006 | 0.003 |
| 10 | 0.059 | 0.059 | 0.058 | 0.058 | 0.081 | 0.081 | 0.071 | 0.071 |
| 11 | -0.090 | -0.104 | -0.082 | -0.085 | -0.073 | -0.054 | -0.063 | -0.057 |
| 12 | -0.010 | -0.010 | -0.005 | -0.005 | 0.040 | 0.040 | 0.040 | 0.040 |
| 13 | -0.115 | -0.106 | -0.119 | -0.107 | -0.065 | -0.044 | -0.058 | -0.047 |
| 14 | -0.004 | -0.004 | -0.001 | -0.001 | 0.042 | 0.042 | 0.043 | 0.043 |
| 15 | 0.213 | 0.175 | 0.206 | 0.177 | 0.208 | 0.162 | 0.195 | 0.166 |
| 16 | -0.379 | -0.409 | -0.401 | -0.418 | -0.297 | -0.248 | -0.316 | -0.276 |
| 17 | 0.382 | 0.373 | 0.389 | 0.389 | 0.385 | 0.427 | 0.395 | 0.445 |
| 18 | -0.422 | -0.368 | -0.410 | -0.367 | -0.380 | -0.315 | -0.375 | -0.300 |
| 19 | -0.490 | -0.483 | -0.489 | -0.486 | -0.464 | -0.516 | -0.437 | -0.499 |
| 20 | 0.134 | 0.134 | 0.137 | 0.137 | 0.119 | 0.118 | 0.117 | 0.116 |
| 21 | 0.054 | 0.054 | 0.054 | 0.054 | 0.082 | 0.082 | 0.089 | 0.089 |
| 22 | 0.035 | 0.035 | 0.038 | 0.038 | 0.062 | 0.061 | 0.069 | 0.066 |
| 23 | 0.036 | 0.036 | 0.038 | 0.038 | 0.063 | 0.061 | 0.071 | 0.068 |
| 24 | -0.008 | -0.008 | -0.025 | -0.026 | -0.050 | -0.051 | -0.044 | -0.045 |
| 25 | 0.054 | 0.053 | 0.066 | 0.066 | 0.058 | 0.056 | 0.059 | 0.058 |
| 26 | 0.030 | 0.030 | 0.038 | 0.038 | 0.074 | 0.074 | 0.075 | 0.075 |
| 27 | 0.053 | 0.053 | 0.041 | 0.040 | 0.058 | 0.057 | 0.072 | 0.071 |
| 28 | 0.126 | 0.101 | 0.135 | 0.108 | 0.113 | 0.026 | 0.103 | 0.052 |
| 29 | -0.410 | -0.423 | -0.429 | -0.441 | -0.278 | -0.283 | -0.276 | -0.280 |
| 30 | - | - | - | - | 0.141 | 0.139 | 0.164 | 0.155 |