

An ONIOM and MD Investigation of Possible Monofunctional Activity of Human 8-Oxoguanine–DNA Glycosylase (hOgg1)

Jennifer L. Kellie, Katie A. Wilson and Stacey D. Wetmore*

Department of Chemistry and Biochemistry, University of Lethbridge, 4401 University Drive West, Lethbridge, Alberta, Canada, T1K 3M4

Supporting Information (44 pages)

Table of Contents

Table S1.	ONIOM model contents and layer division.....	S2
Table S2.	Summary of ONIOM reaction coordinates and increments used to refine transition states	S4
Table S3.	Key dihedral angles from MD simulations.....	S4
Table S4.	Active site hydrogen bonding from MD simulations	S5
Table S5.	Key distances from MD simulations	S5
Table S6.	Active site water hydrogen bonding from MD simulations.....	S6
Table S7.	ONIOM conformational search results.....	S7
Table S8.	Number of relaxed geometries post-ONIOM conformational search.....	S8
Figure S1.	RMSD of the protein and DNA from MD simulations.....	S9
Figure S2.	Crystal structure–MD overlays showing effect of H270 protonation state.....	S10
Figure S3.	Reaction PES for K249 activation step.....	S11
Figure S4.	Reaction PES for all mechanisms	S11
	Full citation for references 60, 61, 65, 66 and 67.....	S12
	ONIOM energetics and coordinates for all stationary points.	
	Lys Activation: RC1–All.....	S13
	Lys Activation: TS1–All	S15
	Lys Activation: RC2–All.....	S17
	K249–Nuc Deglycosylation: TS2–K _{Nuc}	S20
	K249–Nuc Deglycosylation: RC3–K _{Nuc}	S22
	K249–Nuc Deglycosylation: TS3–K _{Nuc}	S25
	K249–Nuc Deglycosylation: IC1–K _{Nuc}	S27
	K249–GB Deglycosylation: RC3–K _{GB}	S30
	K249–GB Deglycosylation: TS3–K _{GB}	S32
	K249–GB Deglycosylation: PC–K _{GB}	S34
	D268–GB Deglycosylation: RC3–D _{GB}	S37
	D268–GB Deglycosylation: TS3–D _{GB}	S40
	D268–GB Deglycosylation: PC–D _{GB}	S42

Table S1. List of ONIOM(M06-2X/6-31G(d):PM6) model contents, layer divisions and charges.

Residue	PM6–Freeze	PM6–Move	DFT	Truncations	Charge DFT/PM6
DC21	O3'			Remaining backbone and nucleobase	0/0
DA22	Sugar, phosphate, N9	O3'		Nucleobase truncated to N9.	0/−1
FDG23		P, OP1, OP2	Sugar, nucleobase		0/−1
DG24	C1', C2', C3', C4', O4', O3', N9	C5'	P, OP1, OP2, O5'	Nucleobase truncated to N9.	−1/−1
DT25	P, OP1, OP2, O5'			Sugar and nucleobase removed.	0/−1
L37	BB, C β			R-Group truncated to C β	0/0
V38	All				0/0
L39	BB, C β			R-Group truncated to C β	0/0
P40	All				0/0
S41	All				0/0
G42	N		Cα, C, O		0/0
Q43	C, O, R-Group		N, Cα		0/0
S44	All				0/0
F45	All				0/0
V130	All				0/0
R131	BB, C β			R-Group truncated to C β	0/0
L133	All				0/0
R134	BB, C β			R-Group truncated to C β	0/0
Q135	All				0/0
C140	All				0/0
L141	BB, C β			R-Group truncated to C β	0/0
F142	BB, C β			R-Group truncated to C β	0/0
S143	All				0/0
F144	BB	R-Group			0/0
I145	All				0/0
C146	All				0/0
S147	BB		R-Group		0/0
S148	All				0/0
C149	All				0/0
N150	All				0/0
N151	All				0/0
I152	All				0/0
A153	All				0/0
R154	BB, C β			R-Group truncated to C β	0/0
I155	All				0/0
T156	All				0/0
G157	All				0/0

Residue	PM6–Freeze	PM6–Move	DFT	Truncations	Charge DFT/PM6
M158	BB, C β			R-Group truncated to C β	0/0
V159	All				0/0
T248	All				0/0
K249	BB		R-Group		1/1
V250	All				0/0
A251	All				0/0
D252	All				0/-1
C253	BB		R-Group		-1/-1
I254	All				0/0
C255	BB, C β			R-Group truncated to C β	0/0
L256	All				0/0
M257	BB	R-Group			0/0
A264	All				0/0
V265	All				0/0
P266	All				0/0
V267	All				0/0
D268	BB		R-Group		-1/-1
V269	All				0/0
H270	BB		R-Group		1/1
M271	All				0/0
W272	BB, C β			R-Group truncated to C β	0/0
H273	BB, C β			R-Group truncated to C β	0/0
I274	All				0/0
A311	All				0/0
G312	All				0/0
W313	All				0/0
A314	All				0/0
Q315	BB		R-Group		0/0
A316	All				0/0
V317	All				0/0
L318	All				0/0
F319	BB		R-Group		0/0
S320	All				0/0
A321	All				0/0
D322	All				0/-1
L323	All				0/0
R324	All				0/1
Q325	BB, C β			R-Group truncated to C β	0/0
Calcium		CA1(C)			0/2
Waters	4(A), 326(A), 328(A), 336(A), 352(A), 364(A), 369(A), 374(A), 389(A)	2 added water molecules to solvate Ca ²⁺	109(C), 55(C), 1(A)		0/0

Notes: BB – backbone atoms (N, C, O, Ca).

Table S2. Summary of reaction coordinates and increments used to refine ONIOM(M06-2X/6-31G(d):PM6) transition states.^a

Mechanism	TS	Coordinates	Increments ^b
All	TS1	N ϵ -H	0.025, 0.010
K249-Nuc	TS2	C253 C α -C β -S-H	10.0, 5.0, 2.5
K249-Nuc	TS3	C1'-N9, C1'-N ϵ	0.200, 0.100, 0.050
K249-GB	TS3	C1'-N9, C1'-O _{Wat}	0.400, 0.200, 0.050
D268-GB	TS3	C1'-N9, C1'-O _{Wat}	0.400, 0.200, 0.050

^a See Figure 4 for the definitions of the mechanisms and stationary points. ^b Step-sizes used to generate and refine reaction potential energy surface (PES) based on distances (Å) or dihedral angles (degrees).

Table S3. Averages and standard deviations for important dihedral angles (degrees) in the hOgg1 active site from the 3KTU crystal structure and MD simulations^a

	3KTU	H270 ^{neu} K249 ⁺ C253 ⁻	H270 ⁺ K249 ⁺ C253 ⁻	H270 ⁺ K249 ^{neu} C253 ^{neu}
K249 (C γ C δ C ϵ N ζ)	-52.5	-163.9±11.3 (55%) ^a	-165.4±11.8 (23%)	-173.3±11.9 (16%)
		-73.8±12.4 (13%)	-69.9±10.3 (66%)	-60.5±13.2 (33%)
		68.8±8.8 (32%)	68.6±10.0 (10%)	64.7±10.7 (51%)
C253 (C α C β S γ)	158.2	176.2±9.0	175.9±11.2	168.4±14.0
D268 (C α C β C γ O δ)	-51.5	-63.6±12.4	-58.9±9.0	-53.9±9.8
H270 (C α C β C γ N δ)	-66.5	71.5±26.3	-72.7±19.6	-78.8±16.0 (20%)
				93.8±11.2 (80%)

^a The percentage of the simulation that a specific conformation is adopted is shown in brackets. If no number is shown, the noted conformation is adopted over the course of the entire simulation.

Table S4. Hydrogen-bonding occupancies (greater than 10%) in the active site of the hOGG1–DNA complex from MD simulations with various K249, C253 and H270 protonation states.^a

	H270 ^{neu} K249 ⁺ C253 ⁻	H270 ⁺ K249 ⁺ C253 ⁻	H270 ⁺ K249 ^{neu} C253 ^{neu}
O _{G42} ⋯ N _{1OG}	NB ^b	98.7	99.6
O _{K249} ⋯ H-N _{C253}	27.4	80.4	98.0
O _{K249} ⋯ H-S _Y _{C253}	NB	NB	68.9
S _Y _{C253} ⋯ H1-N _ζ _{K249}	22.6	22.7	NB
S _Y _{C253} ⋯ H2-N _ζ _{K249}	25.5	19.1	NB
S _Y _{C253} ⋯ H3-N _ζ _{K249}	51.3	57.0	NB
O _{δ1} _{D268} ⋯ H-N _{M271}	94.8	99.5	99.6
O _{δ1} _{D268} ⋯ H-N _{H270}	NB	NB	18.6
O _{δ2} _{D268} ⋯ H-N _{H270}	95.3	99.1	96.2
O _{δ1} _{D268} ⋯ N _{3OG}	95.5	95.9	91.7
O _{Q315} ⋯ H-N _{F319}	99.8	99.7	99.7
O _{ε1} _{Q315} ⋯ H-N _{2OG}	100.0	99.3	99.3
O _{ε1} _{Q315} ⋯ H-N _{3OG}	59.6	89.4	91.9
O _{δ2} _{D322} ⋯ H-N _ε _{H270}	95.9	NB	NB
OP _{1OG} ⋯ H-N _ε _{H270}	NB	25.6	NB
OP _{2OG} ⋯ H-N _ε _{H270}	NB	86.0	17.0
N _{4OG} ⋯ H-N _ζ _{K249}	NB	NB	37.8
O _{6OG} ⋯ H-OG _{S139}	47.5	26.3	31.9

^aData provided for hydrogen bonds within 3.4 Å heavy atom separation and 120° X–H–H angle.

^bNot observed.

Table S5. Averages and standard deviations for important distances (Å) in the hOgg1 active site from the 3KTU crystal structure and MD simulations.

	3KTU	H270 ^{neu} K249 ⁺ C253 ⁻	H270 ⁺ K249 ⁺ C253 ⁻	H270 ⁺ K249 ^{neu} C253 ^{neu}
H270(N _ε)-OG(OP2)	3.193	8.565±0.528	2.962±0.470	4.082±0.638
K249(N _ζ)-OG(C1')	4.004	4.022±0.211	4.579±0.422	4.061±0.271
D268(O _{δ1})-M271(NH)	3.335	3.005±0.188	2.956±0.136	2.960±0.141
D268(O _{δ1})-H270(NH)	3.778	3.682±0.257	3.474±0.203	3.471±0.203
D268(O _{δ1})-OG(N2)	2.785	2.965±0.233	2.967±0.195	3.042±0.240

Table S6. Hydrogen-bonding occupancies for water molecules in the active site of the hOGG1–DNA complex from MD simulations with different K249 and C253 protonation states, which are occupied for > 20% of the simulation.^a

	H270 ⁺ K249 ⁺ C253 ⁻	H270 ⁺ K249 ^{neu} C253 ^{neu}
S γ _{C253}	51.9 46.85	NB ^b
O δ 2 _{D268}	80.78	42.9
H ϵ 21 _{Q315}	21.6 31.7	69.64
O5' _{OG}	NB	20.18
O3' _{OG}	28.3 22.0 37.2	99.2
O4' _{OG}	NB	25.81
OP1 _{dG}	36.6	35.5 34.1 23.3
OP2 _{dG}	22.2	21.8 20.6
<20% ^c	24	22

^a Hydrogen bonds with multiple water molecules are listed as separate lines. Data is provided for hydrogen bonds within 3.4 Å heavy atom separation and 120° X–H–H angle. ^bNot observed. ^c Number of water–active site residue hydrogen bonds occupied for less than 20% of the simulation.

Table S7. Summary of the alternate geometries (°) obtained from an ONIOM(M06-2X/6-31G(d):PM6) conformational search of the hOgg1 active site.

Residue			F144		K249			C253			D268		H270		Q315			F319	
Altered	Count ^a	ΔE^b	$\alpha\beta^c$	$\beta\gamma^d$	$\alpha\beta^c$	$\beta\gamma^d$	$\gamma\delta^e$	$\delta\epsilon^f$	$\alpha\beta^c$	$\alpha\beta^c$	$\beta\gamma^d$	$\alpha\beta^c$	$\beta\gamma^d$	$\alpha\beta^c$	$\beta\gamma^d$	$\gamma\delta^e$	$\alpha\beta^c$	$\beta\gamma^d$	
Any	53	0.0	151.1	89.4	55.4	-168.8	165.3	-62.7	173.1	-44.2	128.5	150.0	-80.7	44.6	-83.3	156.9	59.2	88.3	
		Std. Dev. ^g	0.01	0.05	0.04	0.02	0.04	0.01	0.01	0.01	0.03	0.02	0.01	0.01	0.03	0.04	0.02	0.02	
K249	1	-20.5	150.5	90.2	64.4	-87.6	-170.3	-48.2	177.1	-43.5	126.5	151.5	-81.3	42.5	-84.4	157.2	56.5	85.5	
K249	1	-9.7	151.6	91.6	57.7	-76.1	-164.9	-176.4	149.9	-44.7	128.9	149.7	-80.5	44.5	-83.2	156.5	59.7	88.8	
Q315	8	-6.0	151.2	91.7	58.0	-167.7	163.4	-62.8	173.5	-44.8	130.8	149.1	-81.5	74.3	-122.4	66.9	57.0	83.6	
K249	1	-5.2	150.5	90.0	99.2	-75.1	-55.6	-45.8	176.9	-44.6	128.0	151.0	-80.3	44.3	-84.1	158.3	60.1	89.3	
C253	4	0.0	151.1	89.3	55.3	-168.8	165.3	-62.7	-137.2	-44.2	128.5	150.1	-80.7	44.6	-83.3	157.0	59.2	88.3	
Q315	2	0.8	149.2	89.6	59.7	-166.5	163.2	-63.5	172.9	-44.4	133.0	150.2	-80.0	-37.0	75.2	47.3	60.0	95.1	
K249	1	0.9	150.4	92.2	98.9	-76.9	-55.3	-153.6	176.9	-45.8	128.9	151.2	-80.4	43.7	-82.4	154.5	59.3	88.0	
Q315	24	1.6	150.0	88.7	56.2	-169.7	163.9	-64.3	175.1	-45.8	129.3	151.9	-79.7	-23.4	89.4	172.6	61.0	88.8	
Q315	13	4.8	149.3	88.7	55.1	-170.7	162.8	-65.4	174.6	-44.8	130.9	151.8	-79.9	54.4	-107.6	-98.7	60.4	97.1	
K249	2	5.8	149.6	91.6	71.7	-139.4	55.8	154.4	176.2	-44.9	127.3	152.0	-80.6	43.6	-85.1	159.5	59.8	89.1	
Q315	2	6.2	151.2	92.3	58.9	-167.6	162.6	-62.9	173.5	-44.8	131.9	148.7	-81.9	-21.2	94.3	-103.6	55.2	82.0	
Q315	4	7.7	149.3	89.7	56.4	-168.8	163.7	-63.8	173.8	-43.8	132.7	149.9	-79.5	39.1	-100.5	-54.8	60.5	91.6	
K249	1	8.1	151.1	91.6	45.9	-178.4	176.7	53.4	177.3	-44.7	130.1	149.9	-81.7	43.2	-82.3	153.7	55.2	84.4	
K249	1	8.5	151.2	91.5	98.6	-68.9	-75.1	69.2	175.6	-44.6	128.8	150.1	-80.5	44.8	-82.7	156.1	59.8	88.7	
K249	2	9.1	150.1	91.1	79.5	-153.4	87.5	90.0	178.0	-43.7	127.4	152.1	-81.0	43.8	-83.9	157.4	59.8	88.6	
H270	4	9.5	150.6	87.4	53.2	-170.2	167.2	-64.4	173.4	-44.3	131.5	166.6	106.2	43.7	-86.7	162.6	62.5	90.9	
Q315	6	10.4	150.1	86.3	51.5	-171.1	166.7	-64.4	174.2	-45.0	126.9	151.0	-80.0	59.8	-82.9	-9.8	61.1	87.2	
K249	1	11.3	148.9	91.6	40.2	-116.3	153.7	58.2	173.4	-45.9	128.5	152.4	-80.5	43.4	-84.3	158.0	59.7	88.9	
D268	1	12.2	151.6	91.4	57.9	-166.8	164.5	-62.6	172.3	-29.0	103.3	149.6	-81.8	48.6	-82.4	157.7	58.2	86.6	
Q315	35	13.4	149.9	89.8	56.7	-168.5	164.2	-63.3	173.4	-44.4	130.9	149.7	-80.1	154.7	76.2	5.4	60.1	89.5	
K249	1	14.5	150.8	89.8	97.2	-103.3	-68.8	-170.4	176.9	-44.4	126.7	151.3	-81.1	44.1	-81.1	158.1	57.8	87.2	
Q315	3	14.7	151.5	84.8	50.3	-171.8	169.0	-64.3	174.2	-46.1	120.8	149.7	-81.0	50.1	-179.6	-0.6	61.8	91.6	
K249	3	18.8	150.6	93.0	107.9	-123.2	59.7	179.2	176.2	-46.6	132.6	150.9	-81.9	43.8	-81.3	152.4	56.8	85.3	
K249	1	26.3	150.7	91.6	-6.8	158.9	-102.2	63.2	177.1	-44.3	128.6	150.5	-80.3	45.0	-83.4	157.6	60.4	89.5	
C253	1	26.5	151.0	92.0	54.4	-168.0	167.1	-64.9	24.3	-44.5	128.9	149.9	-80.7	44.2	-83.4	157.0	58.4	87.1	
Q315	1	29.2	150.0	88.8	55.0	-168.7	166.2	-63.2	172.9	-44.3	129.0	149.7	-79.5	-11.1	75.0	36.1	62.7	92.3	
C253	1	30.0	151.2	90.2	54.6	-167.6	167.4	-64.5	-36.3	-44.4	128.8	149.9	-80.7	44.6	-83.2	157.0	59.2	88.3	
Q315	9	31.2	149.8	89.8	56.8	-168.5	164.1	-63.3	173.3	-44.4	131.1	149.7	-80.0	-158.5	-41.5	108.8	60.2	89.5	
Q315	2	31.5	150.0	89.1	55.5	-169.1	165.6	-63.5	173.5	-44.2	130.2	150.0	-79.5	0.6	89.1	45.4	62.0	88.7	
Q315	1	35.3	149.9	89.5	58.2	-168.2	163.0	-63.7	173.5	-45.2	130.9	150.9	-79.7	-19.0	103.5	90.5	57.7	90.8	
Q315	18	36.7	149.9	89.9	56.9	-168.2	164.5	-63.1	173.2	-44.4	130.9	149.4	-80.0	-171.6	-54.2	9.7	60.1	89.4	
Q315	5	49.1	149.9	89.9	56.8	-168.3	164.4	-63.2	173.2	-44.4	131.0	149.5	-80.0	153.8	51.7	-78.9	60.1	89.4	
Q315	10	62.7	149.9	89.7	57.0	-168.3	164.4	-63.3	173.2	-44.4	131.1	149.9	-79.8	-170.4	-62.8	-92.0	60.2	89.9	

^a Number of structures that relax to the this geometry. ^b Energy (kJ mol⁻¹) relative to the geometry closest to the 3KTU crystal structure. ^c Dihedral angle about the C α -C β bond. ^d Dihedral angle about the C β -C γ bond. ^e Dihedral angle about the C γ -C δ bond. ^f Dihedral angle about the C δ -C ϵ bond. ^g Standard deviation in measured angles for the structures closest to the 3KTU crystal structure.

Table S8. Relaxation of geometries from the ONIOM conformational search of the hOgg1 active site.

Residue	Structures ^a	Residue	Structures ^a
F144	5 / 1	H270	11 / 2
K249	26 / 14	Q315	170 / 17
C253	7 / 3	F319	8 / 1
D268	9 / 2		

^a Number of structures within 100 kJ mol⁻¹ of the minimum after PM6 single-point energy calculation/ Number of unique structures after relaxation with ONIOM.

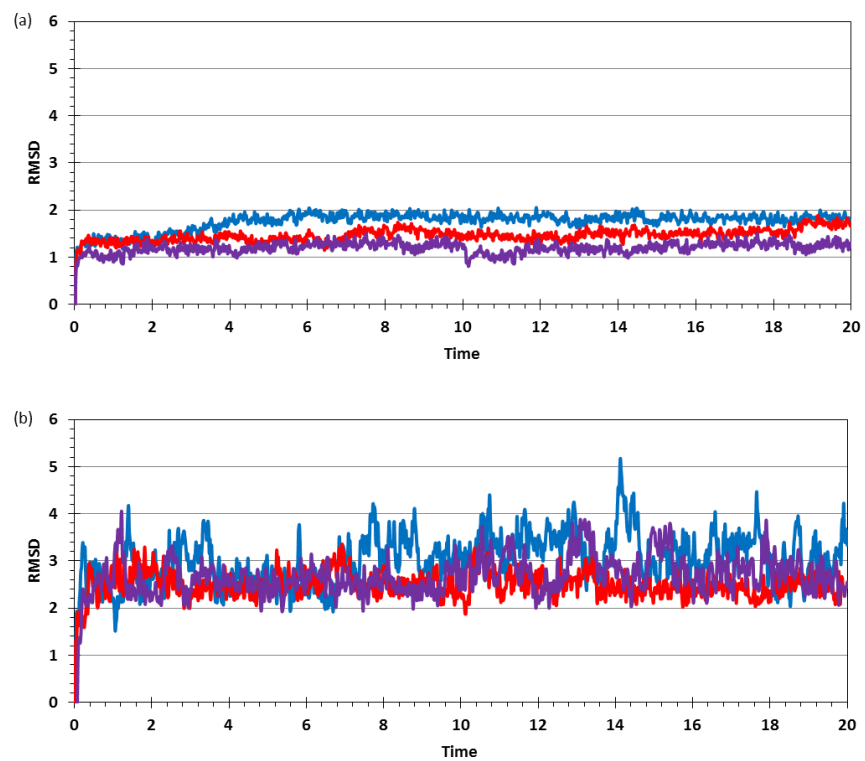


Figure S1. RMSD (Å) of the (a) protein and (b) DNA according to MD simulations on the hOgg1–DNA complex with neutral H270 and K249⁺–C253⁻ (purple), cationic H270 and K249⁺–C253⁻ (red), and cationic H270 and K249–C253 (blue).

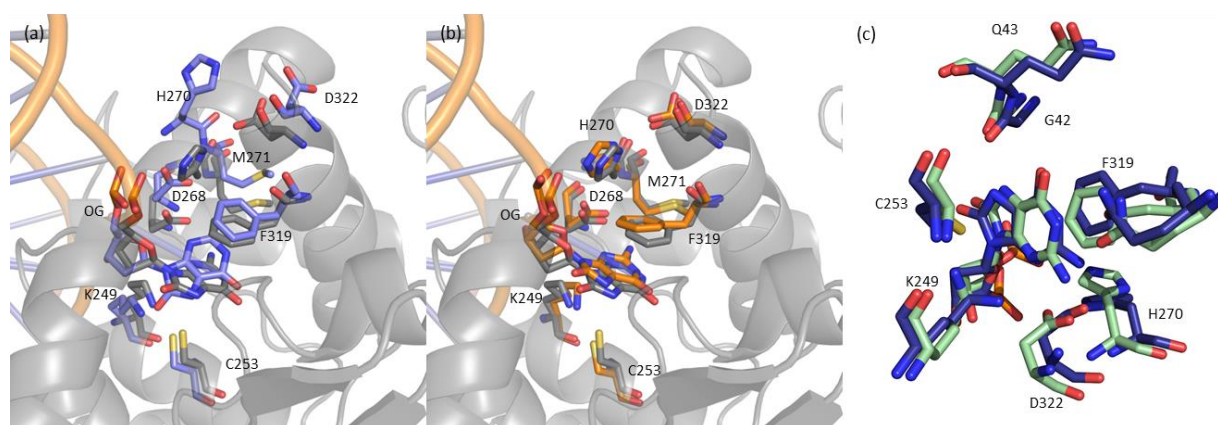


Figure S2. RMSD overlay of (a) the 3KTU crystal structure (grey carbons) and representative structure from the MD simulation with neutral H270 (purple carbons), and (b) the 3KTU crystal structure (grey carbons) and representative structure from the MD simulation with cationic H270 (orange carbons). (c) The optimized ONIOM high-level region (green carbons) and representative structure from the MD simulation with cationic H270 (blue carbons). The charge separated $K249^+ - C253^-$ was included in both simulations.

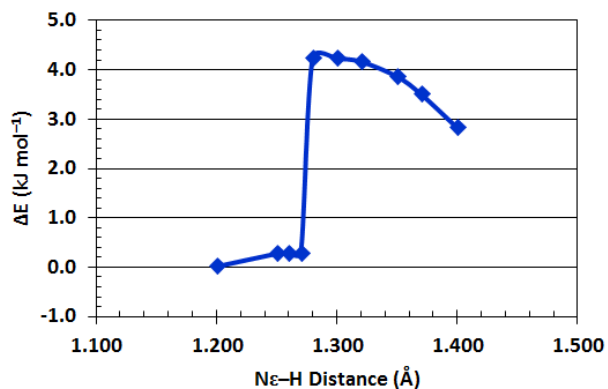


Figure S3. ONIOM(M06-2X/6-31G(d):PM6) reaction potential energy surface for proton transfer from K249 to C253.

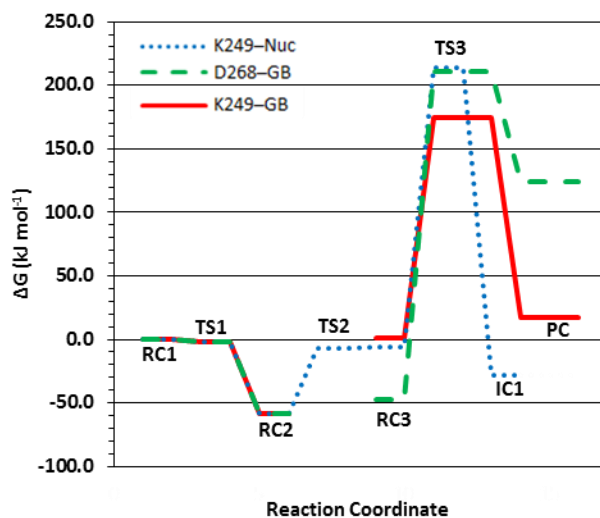


Figure S4. ONIOM(M06-2X/6-311+G(2df,2p):PM6) reaction free energies (ΔG , kJ mol^{-1}) for the three hOgg1 monofunctional mechanisms investigated in the present work. See Figure 4 for the definitions of the mechanisms and stationary points, and Table 1 for the relative free energies.

Full citation for reference 60.

Case, D. A.; Darden, T. A.; T.E. Cheatham, I.; Simmerling, C. L.; Wang, J.; Duke, R. E.; Luo, R.; Crowley, M.; R.C.Walker; Zhang, W.; Merz, K. M.; B.Wang; Hayik, S.; Roitberg, A.; Seabra, G.; Kolossváry, I.; K.F.Wong; Paesani, F.; Vanicek, J.; Wu, X.; Brozell, S. R.; Steinbrecher, T.; Gohlke, H.; Yang, L.; Tan, C.; Mongan, J.; Hornak, V.; Cui, G.; Mathews, D. H.; Seetin, M. G.; Sagui, C.; Babin, V.; Kollman, P. A. *AMBER 11*, 11; University of California, San Francisco, CA: 2010.

Full citation for reference 61.

Case, D. A.; Darden, T. A.; T.E. Cheatham, I.; Simmerling, C. L.; Wang, J.; Duke, R. E.; Luo, R.; Walker, R. C.; Zhang, W.; Merz, K. M.; Roberts, B.; Hayik, S.; Roitberg, A.; Seabra, G.; Swails, J.; Goetz, A. W.; Kolossváry, I.; Wong, K. F.; Paesani, F.; Vanicek, J.; Wolf, R. M.; Liu, J.; Wu, X.; Brozell, S. R.; Steinbrecher, T.; Gohlke, H.; Cai, Q.; Ye, X.; Wang, J.; Hsieh, M.-J.; Cui, G.; Roe, D. R.; Mathews, D. H.; Seetin, M. G.; Salomon-Ferrer, R.; Sagui, C.; Babin, V.; Luchko, T.; Gusarov, S.; Kovalenko, A.; Kollman, P. A., *AMBER 12*. University of California, San Francisco, CA: 2012.

Full citation for reference 65.

Chung, L. W.; Sameera, W. M. C.; Ramozzi, R.; Page, A. J.; Hatanaka, M.; Petrova, G. P.; Harris, T. V.; Li, X.; Ke, Z.; Liu, F.; Li, H.-B.; Ding, L.; Morokuma, K., *The ONIOM Method and Its Applications. Chem. Rev. (Washington, DC, U. S.)* 2015.

Full citation for reference 66.

Frisch, M. J.; Trucks, G. W.; Schlegel, H. B.; Scuseria, G. E.; Robb, M. A.; Cheeseman, J. R.; Scalmani, G.; Barone, V.; Mennucci, B.; Petersson, G. A.; Nakatsuji, H.; Caricato, M.; Li, X.; Hratchian, H. P.; Izmaylov, A. F.; Bloino, J.; Zheng, G.; Sonnenberg, J. L.; Hada, M.; Ehara, M.; Toyota, K.; Fukuda, R.; Hasegawa, J.; Ishida, M.; Nakajima, T.; Honda, Y.; Kitao, O.; Nakai, H.; Vreven, T.; Montgomery, J., J. A; Peralta, J. E.; Ogliaro, F.; Bearpark, M.; Heyd, J. J.; Brothers, E.; Kudin, K. N.; Staroverov, V. N.; Kobayashi, R.; Normand, J.; Raghavachari, K.; Rendell, A.; Burant, J. C.; Iyengar, S. S.; Tomasi, J.; Cossi, M.; Rega, N.; Millam, N. J.; Klene, M.; Knox, J. E.; Cross, J. B.; Bakken, V.; Adamo, C.; Jaramillo, J.; Gomperts, R.; Stratmann, R. E.; Yazyev, O.; Austin, A. J.; Cammi, R.; Pomelli, C.; Ochterski, J. W.; Martin, R. L.; Morokuma, K.; Zakrzewski, V. G.; Voth, G. A.; Salvador, P.; Dannenberg, J. J.; Dapprich, S.; Daniels, A. D.; Farkas, Ö.; Foresman, J. B.; Ortiz, J. V.; Cioslowski, J.; Fox, D. J. *Gaussian 09*, Revision A.02; Gaussian, Inc.: Wallingford CT, 2009.

Full citation for reference 67.

Frisch, M. J., Trucks, G. W., Schlegel, H. B., Scuseria, G. E., Robb, M. A., Cheeseman, J. R., Scalmani, G., Barone, V., Mennucci, B., Petersson, G. A., Nakatsuji, H., Caricato, M., Li, X., Hratchian, H. P., Izmaylov, A. F., Bloino, J., Zheng, G., Sonnenberg, J. L., Hada, M., Ehara, M., Toyota, K., Fukuda, R., Hasegawa, J., Ishida, M., Nakajima, T., Honda, Y., Kitao, O., Nakai, H., Vreven, T., J. A. Montgomery, J., Peralta, J. E., Ogliaro, F., Bearpark, M., Heyd, J. J., Brothers, E., Kudin, K. N., Staroverov, V. N., Keith, T., Kobayashi, R., Normand, J., Raghavachari, K., Rendell, A., Burant, J. C., Iyengar, S. S., Tomasi, J., Cossi, M., Rega, N., Millam, J. M., Klene, M., Knox, J. E., Cross, J. B., Bakken, V., Adamo, C., Jaramillo, J., Gomperts, R., Stratmann, R. E., Yazyev, O., Austin, A. J., Cammi, R., Pomelli, C., Ochterski, J. W., Martin, R. L., Morokuma, K., Zakrzewski, V. G., Voth, G. A., Salvador, P., Dannenberg, J. J., Dapprich, S., Daniels, A. D., Farkas, O., Foresman, J. B., Ortiz, J. V., Cioslowski, J., and Fox, D. J. *Gaussian 09*, Revision C.01 ed., Gaussian, Inc., Wallingford CT, 2010.

ONIOM(M06-2X/6-311+G(2df,2p):PM6)//ONIOM(M06-2X/6-31G(d):PM6) energetics and coordinates. (DFT region only, truncation points capped with a hydrogen atom).

Lys Activation:	RC1-All	E = -3875.584519 a.u.	
O	-0.97626300	-6.05723900	-2.30171300
C	-2.10903000	-5.58898800	-1.58949700
C	-1.65570800	-5.34766200	-0.16474900
O	-0.92153400	-4.12698700	-0.10926900
C	-2.79180800	-5.23629400	0.87245300
O	-2.41693500	-6.14540000	1.92775900
C	-2.71874800	-3.79182100	1.33949300
C	-1.24323800	-3.44831500	1.08925400
N	-0.95024300	-2.03864400	0.90257100
C	-1.55567900	-1.23231100	-0.10747200
N	-0.66840900	-0.21986600	-0.35394000
C	0.47350000	-0.37517200	0.43270000
C	1.73196700	0.29062200	0.40987700
O	2.07477300	1.26585600	-0.25447200
N	2.62837000	-0.33830900	1.29347300
C	2.38034800	-1.49174000	1.98512300
N	3.40320900	-1.98857800	2.72884300
N	1.21395800	-2.10747500	1.98137800
C	0.31946600	-1.52133900	1.17091800
O	-2.66687000	-1.38991400	-0.58758700
P	-3.47523500	-6.81683000	2.93338500
O	-2.85506900	-8.17307500	3.34846200
O	-4.84738600	-6.91799600	2.32485800
O	-3.37467900	-5.74293600	4.12257700
C	-1.15179000	1.28469400	-4.32300900
C	-1.03338200	2.37788000	-3.22793000
O	-1.34760600	2.11367200	-2.07566000
N	-0.64681400	3.61390900	-3.62325300
C	-0.76610200	4.77655200	-2.76441800
C	-6.42959700	-1.69237900	0.97647600
O	-6.01894300	-1.60125400	2.31960400
C	-2.05522600	-2.60947800	8.19507500
C	-1.37408900	-2.51213100	6.81603900
C	-2.11060400	-1.62761100	5.80526100
C	-1.64312800	-1.85475900	4.37565100
N	-2.36755100	-0.92695700	3.46562500
C	-2.01731400	2.91079300	4.80925400
S	-0.95636500	1.64062700	4.00894500
C	0.94658800	-5.42506600	4.27565600
C	1.97205800	-5.28782900	3.08459700
O	3.11197400	-4.83443200	3.35295400
O	1.56299400	-5.66484900	1.95592800
C	4.32950100	-6.48979600	0.48253700
C	3.71149500	-6.83934100	-0.84455800
N	4.43090000	-7.24452500	-1.96274500
C	2.39987600	-6.82273200	-1.22062900
C	3.59031800	-7.47427500	-2.96714900
N	2.35212500	-7.22415200	-2.54075400
C	8.21791300	1.42281700	3.55650000
C	7.55799400	0.02299000	3.58209200
C	6.05639800	-0.03579100	3.33615500
O	5.57664700	0.21072700	2.22681300
N	5.30594400	-0.38230400	4.39389800
C	6.33508900	-1.20750200	-0.76247400
C	4.90048600	-1.69112100	-0.94759900
C	4.42201200	-2.81114000	-0.25937400
C	4.02254500	-1.00124800	-1.78899500

C	3.10293900	-3.24341600	-0.40999300
C	2.71497400	-1.44850300	-1.96994700
C	2.24905600	-2.56786800	-1.28277900
O	3.01287700	2.17865800	-2.79101100
O	-4.85114700	-9.14371000	1.11524700
O	-0.01456200	-7.83231700	2.18579500
H	-2.93336900	-6.32717700	-1.57806000
H	-2.49266300	-4.64275100	-2.00203700
H	-1.01691200	-6.18296100	0.14345000
H	-3.78350500	-5.51904100	0.49470700
H	-3.32971100	-3.16146000	0.68556100
H	-3.04688500	-3.68007200	2.37463200
H	-0.59086500	-3.79092800	1.89973600
H	-0.89602300	0.58202000	-0.94249700
H	3.56705300	0.06444900	1.35380600
H	3.27867600	-2.96771500	3.01840500
H	4.32760800	-1.75693900	2.37498000
H	-2.23590700	1.15449000	-4.52956800
H	-0.77452800	0.34137600	-3.87235100
H	-0.45801000	3.77320500	-4.61295100
H	-0.67785800	4.43348000	-1.71526500
H	-5.60699400	-2.19029400	0.44194300
H	-6.55500400	-0.68731400	0.52382200
H	-6.72382600	-1.20217500	2.86703300
H	-1.58489900	-3.44396300	8.75399100
H	-3.11383800	-2.89288600	8.04717500
H	-1.31285100	-3.53173400	6.41783600
H	-0.33834700	-2.16608300	6.92631700
H	-3.19047800	-1.83360700	5.86638900
H	-1.96016500	-0.56094800	6.03712400
H	-1.80894400	-2.88902800	4.06183900
H	-0.57915900	-1.61894500	4.26745900
H	-2.12353400	-1.11633700	2.48742100
H	-3.38454300	-1.01056800	3.55479100
H	-2.77374000	2.45386400	5.48288000
H	-2.58167300	3.47565600	4.04441200
H	-1.98205500	0.17356900	3.70146200
H	0.04006500	-5.94297900	3.94118700
H	0.65214900	-4.38070800	4.52420400
H	3.66309700	-5.80193300	1.01574600
H	5.27410800	-5.95528600	0.24716200
H	5.47847800	-7.32274300	-2.04280300
H	1.52071100	-6.54021700	-0.67494100
H	3.87373900	-7.81410400	-3.95458200
H	1.47733300	-7.29818500	-3.09716000
H	8.62284400	1.65123100	4.55461300
H	7.46667200	2.20476900	3.32978600
H	7.96549500	-0.60669300	2.77583700
H	7.79302300	-0.48730300	4.52326300
H	5.71432700	-0.72858200	5.25291200
H	4.33248100	-0.66280000	4.24980500
H	6.63396500	-1.33705900	0.29569100
H	6.39109000	-0.12287100	-0.95528400
H	5.08758600	-3.34586900	0.41969700
H	4.34663600	-0.09735900	-2.29849500
H	2.71114900	-4.06493700	0.18737500
H	2.04575300	-0.88893300	-2.62426400
H	1.22124500	-2.90760800	-1.39502500
H	2.41183700	1.61815700	-3.31758900
H	2.81259500	1.91370100	-1.87260200
H	-4.93571600	-9.19226100	0.13196000
H	-4.96440800	-8.16592900	1.36727200
H	0.35964000	-6.94514200	1.96874000

H	-0.95909900	-7.68404100	2.33614000
H	-0.03124790	5.51084550	-3.02074300
H	-1.73535828	5.20554747	-2.91072301
H	-0.63271366	1.52211734	-5.22804486
H	-1.38501646	3.57214130	5.36397758
H	-7.32751717	-2.25249068	0.81863342
H	9.00023939	1.43340718	2.82660051
H	7.02578394	-1.73018305	-1.39068178
H	4.54352288	-7.35895381	1.06876165
H	1.36742228	-5.88566574	5.14493524
H	-3.54975945	-6.15570403	4.97144059
H	-1.20037326	-6.49730855	-3.12494649
H	-1.99158020	-1.72726524	8.79719613

Lys Activation: TS1-All E = -3875.582959 a.u. (348.65i cm⁻¹)

O	-0.97444800	-6.06002700	-2.29995900
C	-2.10655100	-5.58977700	-1.58742600
C	-1.65243900	-5.34897400	-0.16296300
O	-0.91410200	-4.13114600	-0.10852200
C	-2.78807000	-5.23311200	0.87421100
O	-2.41454600	-6.14227000	1.93024200
C	-2.71205800	-3.78788100	1.33865500
C	-1.23627600	-3.44761800	1.08784400
N	-0.93988500	-2.04025100	0.89510500
C	-1.54695300	-1.23233000	-0.11054700
N	-0.66199100	-0.21577300	-0.35221000
C	0.47948400	-0.37119600	0.43471500
C	1.73749600	0.29459900	0.41302600
O	2.07995400	1.27240800	-0.24846300
N	2.63466200	-0.33619500	1.29469200
C	2.38725100	-1.49206100	1.98263400
N	3.41031100	-1.99017300	2.72604600
N	1.22196700	-2.10894700	1.97658000
C	0.32632900	-1.52126000	1.16830600
O	-2.65653300	-1.39037300	-0.59439000
P	-3.47340600	-6.81544600	2.93356700
O	-2.85311700	-8.17216200	3.34786700
O	-4.84510800	-6.91759700	2.32372200
O	-3.37479100	-5.74324600	4.12384300
C	-1.15229100	1.28405900	-4.32300900
C	-1.03447300	2.37781600	-3.22854000
O	-1.34923500	2.11431600	-2.07630000
N	-0.64733100	3.61369800	-3.62399400
C	-0.76679500	4.77593400	-2.76487100
C	-6.43002700	-1.69280500	0.97712400
O	-6.02140800	-1.60073000	2.31996500
C	-2.05489400	-2.60894900	8.19284900
C	-1.37168600	-2.50931800	6.81463700
C	-2.10429600	-1.62049200	5.80551700
C	-1.63212200	-1.82661200	4.37397400
N	-2.35447500	-0.88777800	3.48115900
C	-2.01688000	2.90896800	4.81065200
S	-0.94260900	1.65526100	4.00003600
C	0.94770200	-5.42527500	4.27522900
C	1.97418100	-5.28941700	3.08484400
O	3.11378300	-4.83499100	3.35338900

O	1.56680900	-5.66928600	1.95652400
C	4.33000000	-6.48961900	0.48283200
C	3.70838200	-6.83863200	-0.84264800
N	4.42504400	-7.24551200	-1.96196700
C	2.39609200	-6.81979800	-1.21626700
C	3.58210800	-7.47434400	-2.96471500
N	2.34525000	-7.22182800	-2.53613700
C	8.21836900	1.42388600	3.55738800
C	7.55890900	0.02411700	3.58531100
C	6.05770700	-0.03460000	3.33779500
O	5.57931500	0.21397900	2.22839200
N	5.30609700	-0.38288500	4.39422100
C	6.33486800	-1.20722300	-0.76257400
C	4.90013400	-1.68978300	-0.94917700
C	4.42128500	-2.81144000	-0.26393600
C	4.02247400	-0.99735100	-1.78876800
C	3.10191600	-3.24246700	-0.41522700
C	2.71455700	-1.44335600	-1.97044000
C	2.24808700	-2.56409400	-1.28587700
O	3.01042600	2.18262000	-2.78967300
O	-4.85028300	-9.14187300	1.11594600
O	-0.01477800	-7.83379200	2.18642700
H	-2.93196100	-6.32671900	-1.57599700
H	-2.48850100	-4.64292100	-2.00016200
H	-1.01654700	-6.18639400	0.14560600
H	-3.78033600	-5.51471000	0.49714800
H	-3.32176600	-3.15791400	0.68327800
H	-3.03882400	-3.67055000	2.37347900
H	-0.58532400	-3.78838600	1.90003000
H	-0.89055000	0.58588100	-0.94031500
H	3.57320700	0.06668800	1.35585500
H	3.28453300	-2.96979700	3.01376100
H	4.33450200	-1.75981800	2.37077200
H	-2.23629200	1.15320700	-4.52966200
H	-0.77460600	0.34115900	-3.87185800
H	-0.45834300	3.77300400	-4.61365400
H	-0.67849400	4.43205300	-1.71605800
H	-5.60679700	-2.19105400	0.44382100
H	-6.55563100	-0.68829300	0.52289300
H	-6.72686800	-1.20223900	2.86681900
H	-1.58626900	-3.44448800	8.75159300
H	-3.11363600	-2.89089600	8.04283000
H	-1.31237600	-3.52767700	6.41318100
H	-0.33496700	-2.16658800	6.92763900
H	-3.18390500	-1.82987100	5.85893700
H	-1.96137100	-0.55542900	6.04927800
H	-1.78813800	-2.86111300	4.05293000
H	-0.56662700	-1.58963900	4.27699100
H	-2.12296100	-1.07233700	2.50097500
H	-3.36959000	-0.97356100	3.57750200
H	-2.76224900	2.43581100	5.48445500
H	-2.59001000	3.46986000	4.05029000
H	-1.91396800	0.28686600	3.73525500
H	0.04110300	-5.94281500	3.94052300
H	0.65338400	-4.38074200	4.52312600

H	3.66608000	-5.80039200	1.01740400
H	5.27522700	-5.95714100	0.24496300
H	5.47195600	-7.32525800	-2.04328500
H	1.51857100	-6.53533500	-0.66889300
H	3.86288100	-7.81504900	-3.95261500
H	1.46912400	-7.29482000	-3.09107600
H	8.62397300	1.65367600	4.55493300
H	7.46661600	2.20525200	3.33028600
H	7.96704400	-0.60701900	2.78049900
H	7.79313900	-0.48457500	4.52753500
H	5.71431100	-0.73070600	5.25272100
H	4.33403400	-0.66709200	4.24745700
H	6.63300900	-1.33785000	0.29569700
H	6.39180900	-0.12245500	-0.95445100
H	5.08675700	-3.34846900	0.41341300
H	4.34704000	-0.09245700	-2.29618000
H	2.70995700	-4.06531200	0.18018800
H	2.04546700	-0.88177200	-2.62317700
H	1.21992100	-2.90279100	-1.39812800
H	2.40901200	1.62256300	-3.31629900
H	2.81205600	1.91582400	-1.87128300
H	-4.93420400	-9.18918200	0.13250600
H	-4.96266500	-8.16380500	1.36902500
H	0.36091700	-6.94706800	1.97008300
H	-0.95904000	-7.68402800	2.33722700
H	-0.03200082	5.51042163	-3.02081129
H	-1.73609095	5.20497019	-2.91079325
H	-1.38513156	3.57145740	5.36463910
H	-7.32765235	-2.25328621	0.81891668
H	-3.54989593	-6.15679203	4.97232278
H	-1.19960292	-6.49860452	-3.12370351
H	1.36788414	-5.88587433	5.14482387
H	-1.99162797	-1.72770376	8.79642521
H	4.54391303	-7.35889391	1.06892273
H	9.00014135	1.43401606	2.82688860
H	7.02563903	-1.72994895	-1.39066075
H	-0.63316772	1.52164471	-5.22797533

Lys Activation:

RC2-All

E = -3875.593005 a.u.

O	-0.97050000	-6.04752700	-2.33144100
C	-2.10135900	-5.58870100	-1.60738200
C	-1.64938000	-5.39272000	-0.17582800
O	-0.88042900	-4.19587700	-0.09154600
C	-2.78941800	-5.26964700	0.85233000
O	-2.42544000	-6.17435100	1.91658600
C	-2.71610300	-3.82333200	1.30905400
C	-1.23526200	-3.48598900	1.08257600
N	-0.93053000	-2.08550600	0.86168300
C	-1.54722800	-1.27362200	-0.12709800
N	-0.67102100	-0.24482300	-0.36105100
C	0.46949700	-0.39519500	0.42712700
C	1.72104400	0.27862900	0.40979600
O	2.05732000	1.26721200	-0.24217100
N	2.62297000	-0.35004100	1.28904700

C	2.38282500	-1.51415500	1.96618200
N	3.40967800	-2.00650200	2.71272700
N	1.22541200	-2.14193000	1.95162200
C	0.32163300	-1.55561600	1.15054300
O	-2.65459300	-1.43306200	-0.61691200
P	-3.49198400	-6.83221700	2.92143900
O	-2.87677700	-8.18647800	3.35259100
O	-4.85968700	-6.93949800	2.30165500
O	-3.40429700	-5.74886900	4.10100600
N	-0.42683400	1.62065600	-5.57159000
C	-1.14487600	1.29099300	-4.32227700
C	-1.02674300	2.38357700	-3.22646000
O	-1.34159900	2.12019200	-2.07454900
N	-0.63811300	3.62005300	-3.62144600
C	-0.75719900	4.78100800	-2.76172500
C	-6.42664700	-1.69154500	0.98541300
O	-6.02129000	-1.63544800	2.32939200
C	-2.05912500	-2.61962100	8.19726600
C	-1.46933700	-2.50431400	6.77764500
C	-2.35006600	-1.75595700	5.77378700
C	-1.91144900	-1.94235000	4.32548400
N	-2.76439300	-1.13878100	3.44020000
C	-2.05405900	2.93872500	4.83215700
S	-1.02804000	1.58283200	4.14095500
C	0.94581600	-5.42963600	4.26782500
C	1.97667100	-5.30587400	3.08006400
O	3.11488100	-4.84581400	3.34807800
O	1.57823100	-5.70378300	1.95486500
C	4.32880700	-6.49022300	0.48125100
C	3.68883700	-6.83259600	-0.83671800
N	4.39126500	-7.24950800	-1.96128200
C	2.37360400	-6.79864200	-1.19884500
C	3.53677100	-7.46990800	-2.95663200
N	2.30718500	-7.20192000	-2.51790100
C	8.22062900	1.41634500	3.56485500
C	7.55293200	0.02067900	3.59190000
C	6.05245800	-0.02988400	3.33490400
O	5.58079200	0.24056700	2.22824800
N	5.29404100	-0.39650600	4.38096100
C	6.33638200	-1.21090300	-0.76005000
C	4.90206100	-1.69213700	-0.95233100
C	4.42341700	-2.81993900	-0.27727100
C	4.02537600	-0.99431400	-1.78845500
C	3.10478800	-3.25084500	-0.43428000
C	2.71835100	-1.44056200	-1.97630000
C	2.25176000	-2.56712600	-1.30144600
O	3.00877400	2.18870100	-2.77349900
O	-4.86199300	-9.16629900	1.10694900
O	-0.02948200	-7.84880900	2.18062600
H	-2.93384600	-6.31808500	-1.61906200
H	-2.47229900	-4.62739500	-1.99550400
H	-1.03545000	-6.25194100	0.11696100
H	-3.77908300	-5.55322800	0.46959500
H	-3.31582500	-3.19718900	0.64090900
H	-3.05496400	-3.69452800	2.33741400

H	-0.60396600	-3.80574100	1.91738000
H	-0.90318400	0.55523600	-0.94864300
H	3.55854500	0.05908100	1.35264200
H	3.28303800	-2.98684600	2.99924000
H	4.33121500	-1.78692000	2.34346700
H	-2.22882200	1.16114400	-4.52958800
H	-0.76785500	0.34747800	-3.87197000
H	-0.44965900	3.77988900	-4.61107300
H	-0.67007800	4.43445700	-1.71375200
H	-5.60507400	-2.18090100	0.44128100
H	-6.54814700	-0.67626200	0.55476600
H	-6.70813700	-1.21208300	2.88013300
H	-1.52455700	-3.42970900	8.73436300
H	-3.11252200	-2.94607500	8.11563500
H	-1.31350600	-3.52620300	6.41218600
H	-0.47369500	-2.04238600	6.81504000
H	-3.39027600	-2.10224600	5.87746900
H	-2.35037200	-0.67585500	5.98595600
H	-1.91313900	-3.01478300	4.07994100
H	-0.87862200	-1.58590200	4.20651700
H	-2.47245700	-1.26434100	2.47188600
H	-3.73323100	-1.45876000	3.48265200
H	-2.83791200	2.52765700	5.49982100
H	-2.56174400	3.48463700	4.01934900
H	-2.02136200	0.67690800	3.86640200
H	0.03767600	-5.94456500	3.93307700
H	0.65436400	-4.38342900	4.51122000
H	3.67908800	-5.79407300	1.02411200
H	5.27819500	-5.96956600	0.23211500
H	5.43490800	-7.33918000	-2.04843500
H	1.50533800	-6.50025000	-0.64353500
H	3.80380300	-7.81528500	-3.94679200
H	1.42506600	-7.26717400	-3.06602300
H	8.62728100	1.64273400	4.56280000
H	7.47234500	2.20149300	3.33876800
H	7.96206800	-0.61465300	2.79075200
H	7.77907200	-0.48815100	4.53589600
H	5.69794800	-0.76023300	5.23512100
H	4.32682000	-0.68926300	4.21887400
H	6.63199900	-1.34509200	0.29853400
H	6.39519200	-0.12565700	-0.94871700
H	5.08835900	-3.36245300	0.39620500
H	4.35018100	-0.08529700	-2.28831300
H	2.71283200	-4.07827100	0.15445500
H	2.04971300	-0.87453900	-2.62567900
H	1.22412900	-2.90634500	-1.41733100
H	2.41101900	1.63238600	-3.30826700
H	2.80555000	1.91153100	-1.85878100
H	-4.95135100	-9.22124100	0.12466400
H	-4.97250100	-8.18547800	1.35456500
H	0.35448500	-6.96567500	1.96408900
H	-0.97266100	-7.68907300	2.32743100
H	-0.02166002	5.51550921	-3.01547761
H	-1.72588504	5.21165518	-2.90695022
H	-7.32591020	-2.24623659	0.81646641

H	9.00274037	1.42521356	2.83470217
H	7.02777390	-1.73323675	-1.38777980
H	4.53987315	-7.36149906	1.06539919
H	1.36278404	-5.89024854	5.13895860
H	-1.39240634	3.58089186	5.37505430
H	-1.99594185	-1.73485982	8.79568521
H	-3.56407762	-6.15515615	4.95599191
H	-1.19927438	-6.49317400	-3.15037997

Deglycosylation K249–Nuc: TS2–K_{Nuc} E = -3875.586961 a.u. (408.60i cm⁻¹)

O	-0.97421800	-6.02709400	-2.36237800
C	-2.10577300	-5.57716100	-1.63262200
C	-1.66141000	-5.42440000	-0.19336100
O	-0.87656200	-4.24042000	-0.07262200
C	-2.80742600	-5.31199000	0.82633800
O	-2.44785400	-6.21953000	1.89090600
C	-2.74503300	-3.86942400	1.29133300
C	-1.26348300	-3.52184300	1.08724300
N	-0.96588200	-2.12056100	0.85797900
C	-1.58144500	-1.32215700	-0.14166500
N	-0.71035200	-0.28817700	-0.37879200
C	0.42810800	-0.42745500	0.41364900
C	1.67338000	0.25608200	0.39731300
O	2.00189400	1.24732300	-0.25587500
N	2.57834600	-0.36216400	1.28123200
C	2.34338900	-1.52445400	1.96398400
N	3.37405300	-2.00493500	2.71558800
N	1.18993300	-2.15853400	1.95199300
C	0.28235300	-1.58351600	1.14572000
O	-2.68037600	-1.49610200	-0.64419000
P	-3.51897200	-6.85708100	2.90458000
O	-2.90844200	-8.20748600	3.35333800
O	-4.88507700	-6.96681200	2.28142700
O	-3.43382000	-5.75883200	4.07125900
C	-1.13615900	1.30339800	-4.32155600
C	-1.01509800	2.39191400	-3.22166300
O	-1.32664200	2.12477800	-2.06996700
N	-0.62736300	3.62996000	-3.61490000
C	-0.74545200	4.78996000	-2.75427000
C	-6.42508900	-1.68835100	0.98545900
O	-6.01622500	-1.67828500	2.32734700
C	-2.04500500	-2.65184900	8.22045400
C	-1.51972100	-2.53664300	6.77704000
C	-2.55808100	-2.02466100	5.78074100
C	-2.09386500	-2.05230600	4.32811900
N	-3.06623700	-1.35226900	3.49253000
C	-2.05942000	2.97584000	4.80920400
S	-1.20977200	1.46048200	4.23044200
C	0.93900200	-5.43689500	4.25617900
C	1.97387500	-5.31686200	3.07144900
O	3.10828600	-4.84797100	3.34069800
O	1.58365300	-5.72814100	1.94845000
C	4.32437600	-6.49312400	0.47229800
C	3.67640600	-6.82907700	-0.84320600

N	4.37258100	-7.25065800	-1.96987000
C	2.36041200	-6.78459400	-1.20161300
C	3.51356800	-7.46404900	-2.96305500
N	2.28750600	-7.18679900	-2.52079600
C	8.21977300	1.39979900	3.57120200
C	7.54396800	0.00729800	3.58558000
C	6.04246000	-0.03564100	3.32898200
O	5.56956300	0.24541500	2.22587800
N	5.28386600	-0.40852400	4.37344200
C	6.33824500	-1.21590400	-0.75678200
C	4.90376100	-1.69820800	-0.94635400
C	4.42495700	-2.82304600	-0.26640300
C	4.02699300	-1.00436800	-1.78583600
C	3.10699900	-3.25625600	-0.42409900
C	2.72061800	-1.45258400	-1.97359800
C	2.25463600	-2.57779200	-1.29590000
O	3.02139100	2.17624600	-2.75881100
O	-4.87756300	-9.19407700	1.08685000
O	-0.04381500	-7.85940500	2.16723900
H	-2.94584500	-6.29741700	-1.66879300
H	-2.46383200	-4.60234700	-1.99801700
H	-1.05917900	-6.29797200	0.08046600
H	-3.79266200	-5.59945600	0.43480300
H	-3.34205900	-3.24168400	0.62244400
H	-3.09269300	-3.74917400	2.31653100
H	-0.64439500	-3.82749400	1.93579400
H	-0.94046900	0.50577100	-0.97507100
H	3.51239400	0.05057400	1.34084700
H	3.25319900	-2.98535900	3.00463200
H	4.29285700	-1.78955200	2.33648900
H	-2.22043900	1.17736700	-4.52963900
H	-0.76174300	0.35729900	-3.87456800
H	-0.44123800	3.79118200	-4.60470300
H	-0.65992900	4.44141600	-1.70691800
H	-5.60805600	-2.16414000	0.42220600
H	-6.54461000	-0.66013700	0.58644700
H	-6.67099000	-1.21836700	2.88693900
H	-1.45358200	-3.42289800	8.75611100
H	-3.08375500	-3.02868200	8.19123200
H	-1.18884600	-3.53228700	6.46016100
H	-0.62538700	-1.89887500	6.74438900
H	-3.47803700	-2.62133600	5.87482900
H	-2.84957600	-0.99054800	6.02062900
H	-1.90108900	-3.09739300	4.03549600
H	-1.13108600	-1.52651200	4.24064300
H	-2.71353700	-1.26355700	2.54148200
H	-3.93844700	-1.87592800	3.42266300
H	-2.95094700	2.69595300	5.40139500
H	-2.42698400	3.51085100	3.91774800
H	-1.85620600	0.58620000	5.02335500
H	0.03074800	-5.95033900	3.91926400
H	0.65002000	-4.38989200	4.49841400
H	3.68180800	-5.79414300	1.01954700
H	5.27635500	-5.97862500	0.21949700
H	5.41470500	-7.34630600	-2.05899900

H	1.49629500	-6.47810700	-0.64385700
H	3.77468700	-7.81087300	-3.95431500
H	1.40321400	-7.24667300	-3.06676100
H	8.62456600	1.61641400	4.57203700
H	7.47648000	2.19072200	3.34859200
H	7.95028900	-0.62377400	2.77957500
H	7.76798100	-0.51031900	4.52525300
H	5.68793700	-0.78280100	5.22301200
H	4.31637100	-0.69896500	4.20871600
H	6.63547500	-1.35032100	0.30128500
H	6.39573200	-0.13055400	-0.94517600
H	5.08937100	-3.36221200	0.41028500
H	4.35183500	-0.09723900	-2.28915300
H	2.71493200	-4.08187700	0.16695800
H	2.05210000	-0.88951400	-2.62560900
H	1.22809500	-2.91980100	-1.41326100
H	2.42005700	1.62932100	-3.29923200
H	2.80920100	1.89567900	-1.84723200
H	-4.97460700	-9.25757700	0.10616400
H	-4.99053500	-8.21260500	1.32903600
H	0.34734500	-6.97990100	1.94903200
H	-0.98772700	-7.69275800	2.30016600
H	-1.71331926	5.22247109	-2.89941521
H	-1.38940683	3.58994511	5.37387848
H	-0.00880885	5.52409986	-3.00585602
H	-0.61554949	1.54339357	-5.22503144
H	-7.32641300	-2.23699232	0.80795481
H	-3.58036607	-6.15676032	4.93252395
H	-1.20319663	-6.47936245	-3.17762155
H	1.35368117	-5.89907713	5.12757379
H	4.53246161	-7.36638892	1.05454258
H	9.00422573	1.41014926	2.84358481
H	7.02942443	-1.73725735	-1.38555993
H	-1.99623779	-1.75309206	8.79903651

Deglycosylation K249–Nuc: RC3–K_{Nuc} E = -3875.582132 a.u.

O	-0.96698400	-5.97852600	-2.52917700
C	-2.08952800	-5.53686800	-1.77738700
C	-1.65427000	-5.51323000	-0.32770400
O	-0.72284900	-4.44472500	-0.14470700
C	-2.80439700	-5.27309200	0.65444600
O	-2.46276200	-5.99824200	1.86651800
C	-2.73005500	-3.77850700	0.88746400
C	-1.22078300	-3.52872200	0.82410400
N	-0.83241600	-2.18175400	0.46580100
C	-1.39608500	-1.37753700	-0.54730200
N	-0.56090900	-0.29065000	-0.65914200
C	0.49731400	-0.40363800	0.24052400
C	1.72872900	0.29680600	0.31809600
O	2.08056900	1.31652400	-0.28006200
N	2.59446800	-0.33344400	1.23062700
C	2.34168000	-1.52057700	1.86183600
N	3.34634100	-2.00371700	2.65443700
N	1.20816600	-2.17691200	1.75963600

C	0.33921000	-1.59869700	0.90940800
O	-2.42373200	-1.58215600	-1.17571500
P	-3.54678800	-6.80553600	2.73579900
O	-2.87695800	-8.12951900	3.18768400
O	-4.84710800	-6.99404900	2.00570300
O	-3.67417600	-5.77174500	3.95559400
C	-1.15510800	1.34298100	-4.30942700
C	-1.03505700	2.43303100	-3.21346100
O	-1.35040000	2.16849800	-2.06095800
N	-0.64319600	3.66991600	-3.59926700
C	-0.75880100	4.81925200	-2.72419900
C	-6.43369000	-1.67554900	0.98371100
O	-6.03593700	-1.62582300	2.32455700
C	-2.15047700	-2.64862500	8.18431800
C	-0.85174700	-3.13914900	7.54490500
C	-1.19391200	-3.89165400	6.26442600
C	-1.31163600	-2.91654400	5.08965900
N	-1.95250200	-3.43706700	3.89520600
C	-2.07434400	2.95460500	4.85653600
S	-1.48142500	1.23434900	4.68331100
C	0.98959100	-5.46780400	4.18499500
C	2.04261400	-5.37305400	3.01549200
O	3.16135800	-4.87385600	3.29533600
O	1.67135800	-5.81420500	1.90005000
C	4.32878900	-6.49073600	0.41018000
C	3.65210500	-6.81937200	-0.89379500
N	4.33078100	-7.24866000	-2.02839500
C	2.33287500	-6.75599800	-1.23956800
C	3.45943300	-7.44927700	-3.01367200
N	2.24205200	-7.15603000	-2.55908400
C	8.21975800	1.39073400	3.56486800
C	7.53326300	0.00372100	3.57478300
C	6.03221800	-0.02476000	3.31153500
O	5.56459800	0.29925000	2.21850100
N	5.26870900	-0.43605200	4.33801300
C	6.32665200	-1.20052500	-0.77804500
C	4.89460300	-1.67503500	-0.99483500
C	4.41185300	-2.81753000	-0.34852900
C	4.02999400	-0.96729200	-1.83503600
C	3.10120900	-3.25649900	-0.54248500
C	2.73131500	-1.42112000	-2.05884100
C	2.26190800	-2.56552100	-1.41688900
O	2.97940100	2.27353100	-2.79593700
O	-4.93120500	-9.31434200	1.01577200
O	-0.08993400	-7.83117300	2.13093800
H	-2.96564900	-6.20922900	-1.87332400
H	-2.38874000	-4.52215500	-2.07864700
H	-1.16049300	-6.45985200	-0.08443500
H	-3.78118400	-5.62261500	0.29751100
H	-3.20950300	-3.26476300	0.04725200
H	-3.16798700	-3.44188800	1.82545200
H	-0.73956900	-3.71896300	1.78218200
H	-0.82163700	0.54118900	-1.18651400
H	3.51919500	0.08842000	1.34603500
H	3.22675600	-2.99062100	2.91827700

H	4.27455100	-1.79061300	2.29601400
H	-2.23920100	1.21403200	-4.51601100
H	-0.77888100	0.39677500	-3.86350000
H	-0.45197400	3.83913300	-4.58691500
H	-0.66993000	4.45765900	-1.68205500
H	-5.61369700	-2.17126700	0.44203700
H	-6.55116200	-0.66025900	0.54918800
H	-6.72107900	-1.19933300	2.87377300
H	-2.56813600	-3.48329300	8.78818900
H	-2.89715300	-2.45811700	7.39204500
H	-0.29960000	-3.77447000	8.25782100
H	-0.17918500	-2.30427000	7.30358900
H	-0.44417600	-4.65388500	6.05794200
H	-2.15166200	-4.41671900	6.39951600
H	-0.31039900	-2.54437100	4.83003300
H	-1.87983500	-2.02918000	5.40937700
H	-1.58423400	-4.36181700	3.68095200
H	-2.93340200	-3.61932700	4.09647600
H	-3.08005800	2.95218000	5.31823100
H	-2.18824000	3.33153700	3.82632900
H	-1.66626100	0.85592900	5.98281400
H	0.07659800	-5.96996300	3.83852700
H	0.73364900	-4.40735400	4.38845300
H	3.71499100	-5.77227600	0.96267600
H	5.29055700	-6.00477400	0.13484600
H	5.37005700	-7.35133000	-2.12580400
H	1.47842900	-6.42995900	-0.67693800
H	3.70509100	-7.79854400	-4.00827100
H	1.35289000	-7.20506800	-3.09679900
H	8.62953200	1.59826400	4.56570500
H	7.48000300	2.18718500	3.34994000
H	7.93720900	-0.62944200	2.76896900
H	7.75004300	-0.51845500	4.51353200
H	5.66816600	-0.83529700	5.17853000
H	4.30079200	-0.71649300	4.16123000
H	6.61395500	-1.35759600	0.27960400
H	6.39422100	-0.11255300	-0.94698800
H	5.06747900	-3.36792600	0.32749900
H	4.35736800	-0.04567300	-2.30974600
H	2.70523000	-4.09789900	0.02282700
H	2.06872500	-0.84752300	-2.70819800
H	1.24068200	-2.91365700	-1.56255500
H	2.40120700	1.70114100	-3.33571900
H	2.78572600	1.97749800	-1.88428800
H	-5.11463500	-9.50132600	0.06394300
H	-5.00405200	-8.31057300	1.14094600
H	0.33120300	-6.97394300	1.88341800
H	-1.02550100	-7.63430500	2.28420000
H	-0.02215736	5.55530049	-2.97014365
H	-1.72728000	5.25288991	-2.86170021
H	-1.39131950	3.56666405	5.40768140
H	-7.33421864	-2.22674267	0.81012036
H	9.00213513	1.40324891	2.83505337
H	7.01720729	-1.71832733	-1.41043264
H	-0.63548675	1.58833522	-5.21203160

H	4.52851240	-7.36342480	0.99620460
H	1.36961324	-5.92316939	5.07557091
H	-3.69073006	-6.17956606	4.82450593
H	-1.21004909	-6.46633952	-3.31946640
H	-2.02025666	-1.77675110	8.79076550

Deglycosylation K249–Nuc: TS3–K_{Nuc} E = -3875.503694 a.u. (296.34i cm⁻¹)

O	-1.23487500	-6.33478200	-1.75806000
C	-1.19766800	-5.01657100	-1.24720500
C	-1.28303500	-5.25549600	0.26433600
O	-0.82829900	-4.10511400	1.03666700
C	-2.69105800	-5.49932300	0.78150600
O	-2.46973200	-6.37883600	1.89576200
C	-3.13824300	-4.10033200	1.21333900
C	-1.82451800	-3.44368700	1.51427200
N	-1.71387600	-1.80212100	-0.16367800
C	-2.53520000	-1.11334400	-1.03202900
N	-1.85594600	0.02732700	-1.47161600
C	-0.65323300	0.11010900	-0.77395200
C	0.44742000	0.97094700	-0.84180800
O	0.62802100	2.01363700	-1.51431900
N	1.46345500	0.56737900	0.05546400
C	1.44255400	-0.58003100	0.79299800
N	2.59007400	-0.84519600	1.53899700
N	0.42822800	-1.39520700	0.83530500
C	-0.60845800	-1.05850500	0.00586600
O	-3.68293000	-1.41696800	-1.36465000
P	-3.62741300	-6.99277500	2.82736400
O	-3.10041000	-8.35644100	3.31568600
O	-4.95171100	-7.01569000	2.12488100
O	-3.53580700	-5.88817900	3.99321400
C	-1.11174100	1.38197600	-4.29468300
C	-1.33970100	2.61546200	-3.40313200
O	-2.18140700	2.58016500	-2.51391200
N	-0.55542200	3.69855000	-3.58749300
C	-0.69380100	4.82191300	-2.68774200
C	-6.42378800	-1.66242000	0.94558100
O	-5.98423100	-1.71928300	2.28007600
C	-2.12252700	-2.75175800	8.15531800
C	-1.23484900	-2.77582200	6.88843400
C	-1.80444300	-2.02829600	5.66442600
C	-2.56630200	-2.85342200	4.61447700
N	-1.71320200	-3.73107600	3.79353000
C	-2.06219200	2.92839800	4.86981900
S	-1.49151600	1.20541100	4.69289300
C	0.94555300	-5.52538200	4.17851400
C	1.97746000	-5.45304300	2.97537700
O	3.08332900	-4.94137000	3.20140400
O	1.56982800	-5.94960400	1.87903600
C	4.32923900	-6.53086200	0.40873100
C	3.70251500	-6.85103400	-0.91743800
N	4.41230900	-7.19597600	-2.05934300
C	2.38377000	-6.87065200	-1.26451800
C	3.55950100	-7.41436500	-3.05679500

N	2.32329400	-7.22020100	-2.59677900
C	8.27003700	1.32106500	3.67164900
C	7.33778000	0.09002200	3.62982400
C	5.97959200	0.32578200	2.97029300
O	5.86268100	1.02967800	1.97422700
N	4.93172600	-0.30531100	3.54594600
C	6.36643300	-1.27746600	-0.70780500
C	4.92667000	-1.71050100	-0.95165500
C	4.40461700	-2.87347100	-0.37066100
C	4.09017100	-0.92858300	-1.75261100
C	3.08376400	-3.25901400	-0.60175100
C	2.77879800	-1.32625400	-2.01179000
C	2.27444700	-2.49158000	-1.44167900
O	3.08318800	1.95122300	-2.86781400
O	-4.93109300	-9.27438100	0.93605300
O	-0.10204500	-8.00920000	2.11476300
H	-2.02080300	-4.37675100	-1.60187900
H	-0.24560100	-4.50665500	-1.46858100
H	-0.62022100	-6.07778400	0.52525200
H	-3.36045300	-5.96763300	0.04794100
H	-3.55940500	-3.55430500	0.35249800
H	-3.85887600	-4.06920200	2.03148900
H	-1.63356200	-2.47433300	1.93184900
H	-2.32268500	0.83200700	-1.88311700
H	2.32071800	1.10689500	-0.00835100
H	2.57138700	-1.81766700	1.84243500
H	3.44093300	-0.68234500	0.99786300
H	-2.10259700	0.94659100	-4.53480900
H	-0.54926600	0.64979600	-3.66819500
H	-0.03341800	3.80773200	-4.45252500
H	-0.61326800	4.42904400	-1.65318700
H	-5.61481900	-2.07939400	0.32653000
H	-6.56916800	-0.61501700	0.60874600
H	-6.64059100	-1.29496600	2.86433500
H	-1.85002800	-3.62802500	8.77884900
H	-3.17900100	-2.90133300	7.86305200
H	-1.05464900	-3.82504500	6.62159900
H	-0.24385200	-2.37713200	7.14103300
H	-0.99104900	-1.50658300	5.14071100
H	-2.48523400	-1.23751000	6.00936100
H	-3.08697000	-2.14749000	3.95007200
H	-3.34433300	-3.46818000	5.07966100
H	-0.73798600	-3.45604900	3.86937900
H	-1.80171300	-4.70455200	4.06142600
H	-3.07246700	2.93255700	5.32095800
H	-2.15916000	3.31983200	3.84510800
H	-1.64933100	0.84916800	6.00028300
H	0.00900500	-5.99191500	3.84526000
H	0.73280700	-4.46711100	4.43306700
H	3.69022900	-5.82807500	0.95471400
H	5.29383800	-6.03133200	0.17495300
H	5.46104100	-7.26626800	-2.15270600
H	1.50694500	-6.66313000	-0.68298000
H	3.83285800	-7.70599900	-4.06133000
H	1.43427900	-7.27351600	-3.13743300

H	8.75295800	1.34862400	4.66298000
H	7.65474500	2.23896000	3.57768500
H	7.79586700	-0.73141700	3.05384800
H	7.18477000	-0.30631300	4.64021000
H	5.01148000	-0.91777500	4.35351100
H	4.02001400	-0.24159900	3.10018500
H	6.65102400	-1.50744300	0.33752700
H	6.45790000	-0.18355000	-0.80916700
H	5.03111200	-3.47182800	0.29012600
H	4.44934900	0.00806500	-2.16778100
H	2.66306200	-4.12358300	-0.09106200
H	2.13765900	-0.69723900	-2.62994000
H	1.23868500	-2.77393300	-1.61086100
H	2.85234900	1.27426700	-3.53291300
H	2.22482200	2.09731900	-2.40891700
H	-5.05668400	-9.35936700	-0.03866100
H	-5.04954500	-8.29576900	1.15700800
H	0.41826500	-7.18305900	1.94422200
H	-1.02758100	-7.73048200	2.14520700
H	-1.65962124	5.26364514	-2.81798781
H	0.05013719	5.55657415	-2.91518203
H	-0.57640880	1.61718618	-5.19078322
H	-1.37299978	3.51593815	5.43965288
H	9.03073272	1.31535244	2.91918014
H	7.04660677	-1.77711101	-1.36554242
H	4.51282542	-7.41779681	0.97841747
H	1.33281993	-5.99489706	5.05855941
H	-2.03064150	-1.87874505	8.76712307
H	-3.65433384	-6.27671025	4.86303861
H	-7.32448327	-2.21180570	0.76718993
H	-1.36796147	-6.46923025	-2.69923568

Deglycosylation K249–Nuc: IC1–K_{Nuc} E = -3875.589031 a.u.

O	-1.57285300	-6.19654100	-1.74473800
C	-2.13510100	-4.95349600	-1.36053200
C	-2.13443700	-4.92346700	0.16548200
O	-2.24219700	-3.56599500	0.58069600
C	-3.31065400	-5.67448800	0.81392600
O	-2.73663200	-6.59526700	1.78327000
C	-4.13018500	-4.55533300	1.44854100
C	-3.10376900	-3.45104200	1.70425800
N	-0.87092400	-1.30818100	1.66385200
C	-1.53666600	-0.47211100	0.77144400
N	-0.56446200	0.38529500	0.28365700
C	0.68444000	0.01725600	0.79152100
C	1.99824700	0.50198600	0.59861100
O	2.39941000	1.44786900	-0.09195100
N	2.91664400	-0.26192300	1.35133500
C	2.60626900	-1.37214000	2.08432300
N	3.63785100	-2.04383000	2.67343300
N	1.38054100	-1.79377600	2.28710400
C	0.46465400	-1.05914800	1.63591400
O	-2.72701100	-0.48565600	0.49213200
P	-3.65336800	-7.19717900	2.95977000

O	-3.05826900	-8.56052700	3.35876500
O	-5.10130600	-7.24765900	2.53825600
O	-3.34359000	-6.05688300	4.04347000
C	-1.11035600	1.38354100	-4.31966200
C	-0.98574300	2.45559800	-3.20307800
O	-1.31103000	2.18068300	-2.05891600
N	-0.57567600	3.69275700	-3.57814100
C	-0.68828600	4.83638200	-2.69716300
C	-6.43426800	-1.64886500	0.94196000
O	-6.01100800	-1.73014700	2.27484800
C	-2.01209600	-2.69799700	8.00791200
C	-2.70654200	-2.45386800	6.62255900
C	-2.13840100	-3.24231800	5.42389900
C	-2.98345100	-3.03078700	4.14986000
N	-2.31428600	-3.53647100	2.94206100
C	-2.04503400	2.90609000	4.85153800
S	-1.45769900	1.18511500	4.66322600
C	0.91609300	-5.52502100	4.13445300
C	1.99167100	-5.36161500	2.99002400
O	3.10929200	-4.88477400	3.30277800
O	1.64803100	-5.75730400	1.84310400
C	4.30657800	-6.53193500	0.36441600
C	3.67345000	-6.83274300	-0.96136200
N	4.37730900	-7.18470600	-2.10475700
C	2.35424800	-6.82443100	-1.30696000
C	3.52172400	-7.38305100	-3.10290000
N	2.28966700	-7.16851200	-2.64045900
C	8.28123400	1.30124600	3.62866800
C	7.64324700	-0.09310200	3.76242200
C	6.16847600	-0.16125300	3.41088000
O	5.77971200	0.11290800	2.27336200
N	5.34659500	-0.51714500	4.40971100
C	6.35480200	-1.24894300	-0.78531100
C	4.90395900	-1.68203700	-0.95905800
C	4.40907900	-2.82033600	-0.31436900
C	4.01990900	-0.90471400	-1.71275000
C	3.05998800	-3.16902600	-0.39294500
C	2.67953800	-1.26672600	-1.82546000
C	2.19225700	-2.38612800	-1.15494100
O	3.03401400	2.25792100	-2.73766300
O	-4.89415000	-9.06484400	0.81428600
O	-0.05780100	-7.81927200	1.94168700
H	-3.16728700	-4.81865200	-1.73400600
H	-1.53507200	-4.09768800	-1.71013800
H	-1.18988300	-5.35872600	0.51691900
H	-3.88235400	-6.27333300	0.09090400
H	-4.83370200	-4.19500200	0.67723000
H	-4.73596600	-4.84875900	2.30126300
H	-0.74637800	1.02986200	-0.47961500
H	3.89376100	0.03394300	1.31528900
H	3.39981600	-3.00312900	2.95696000
H	4.53068500	-1.94594700	2.19949600
H	-2.19455300	1.26836700	-4.53435600
H	-0.74523400	0.42885800	-3.88419400
H	-0.37873400	3.86769800	-4.56338200

H	-0.60685000	4.46749900	-1.65706800
H	-5.62092600	-2.08061600	0.33817000
H	-6.56248200	-0.59775200	0.61078700
H	-6.65155800	-1.28655700	2.86299600
H	-0.95915700	-2.98902300	7.82818400
H	-2.47008100	-3.57726900	8.50021700
H	-2.63716700	-1.39915200	6.32262400
H	-3.78314600	-2.66504000	6.71946900
H	-1.11489900	-2.89533700	5.22739000
H	-2.07374600	-4.31324500	5.65063700
H	-3.14928200	-1.95235100	4.00116900
H	-3.97539700	-3.48859900	4.29579100
H	-1.27461300	-2.12983200	2.13847800
H	-2.02876000	-4.50086100	3.09791600
H	-3.05374500	2.90410300	5.30638900
H	-2.14809800	3.29622600	3.82493700
H	-1.61582600	0.81459200	5.96790400
H	0.03560600	-6.05433000	3.74996800
H	0.59812400	-4.49081700	4.38720900
H	3.66674000	-5.83299400	0.91446400
H	5.27277600	-6.03406600	0.13415800
H	5.42374100	-7.26988800	-2.19801300
H	1.47726100	-6.60883100	-0.72684100
H	3.79019600	-7.67353600	-4.10904700
H	1.40493600	-7.19887300	-3.18079000
H	8.72169700	1.58769300	4.59760000
H	7.50914100	2.05999500	3.39348200
H	8.10572400	-0.79100100	3.04828000
H	7.81263000	-0.50769800	4.76262500
H	5.70695400	-0.87843800	5.28433100
H	4.41486500	-0.86883700	4.16554300
H	6.65828600	-1.39812500	0.26963200
H	6.43792600	-0.16290600	-0.96147900
H	5.08468200	-3.43092600	0.28652600
H	4.36118000	0.00776500	-2.19401200
H	2.66844200	-4.00863800	0.17981100
H	2.00385800	-0.63635400	-2.40293100
H	1.13651300	-2.64061100	-1.20343800
H	2.43784100	1.68960900	-3.26121400
H	2.85943400	1.98660700	-1.81259200
H	-4.81099200	-8.83416500	-0.14636900
H	-5.14161100	-8.20611300	1.28763900
H	0.43244100	-6.97935000	1.77095200
H	-0.99016500	-7.60380700	1.79057200
H	-3.54268000	-2.44788800	1.67072300
H	0.05542101	5.56820506	-2.93430199
H	-1.65264637	5.27898746	-2.83503788
H	-7.33667816	-2.18922157	0.74556580
H	9.03707751	1.29024009	2.87138374
H	7.03200413	-1.77715030	-1.42350715
H	1.31052720	-6.00147818	5.00755678
H	4.48580280	-7.42572542	0.92469911
H	-3.57663804	-6.35350786	4.92625100
H	-1.36133082	3.50577918	5.41529579
H	-1.99700622	-1.87470252	8.69118244

H	-1.60454127	-6.37071607	-2.68827332
H	-0.58459447	1.63017015	-5.21835487

Deglycosylation K249-GB: RC3-K_{GB} E = -3875.584189 a.u.

O	-1.00018000	-5.95581800	-2.53428100
C	-2.13402100	-5.56097200	-1.77473900
C	-1.68402900	-5.49852400	-0.33219100
O	-0.81428000	-4.37561500	-0.18132600
C	-2.83019000	-5.31987300	0.67279900
O	-2.46569300	-6.10368900	1.83164100
C	-2.77345400	-3.83998200	0.98562800
C	-1.26620800	-3.56004300	0.89056000
N	-0.91486900	-2.18037700	0.61071700
C	-1.50283700	-1.36184300	-0.38358700
N	-0.64982500	-0.29600000	-0.53601600
C	0.44864000	-0.43490700	0.30921000
C	1.68431500	0.26200600	0.35287500
O	2.02054200	1.27851600	-0.25883900
N	2.56901900	-0.36985100	1.24541200
C	2.32552900	-1.55374100	1.88792500
N	3.34223800	-2.03608300	2.66236300
N	1.18535900	-2.20531200	1.81542300
C	0.29702100	-1.62323500	0.99036100
O	-2.56515600	-1.53977000	-0.95943000
P	-3.53105400	-6.81054400	2.79889800
O	-2.89343600	-8.15022800	3.24642600
O	-4.88093900	-6.95643600	2.14905600
O	-3.52546500	-5.74040400	3.99866600
C	-1.15459200	1.34368100	-4.31040400
C	-1.02969400	2.42883900	-3.20899100
O	-1.33549700	2.15860500	-2.05561000
N	-0.64587800	3.66874100	-3.59591500
C	-0.76161800	4.81947600	-2.72282100
C	-6.43386400	-1.67598800	0.97339100
O	-6.02622500	-1.62398700	2.31236400
C	-2.15595300	-2.66700400	8.19590500
C	-0.85105400	-3.20131200	7.60096400
C	-1.12745200	-3.82753900	6.24096300
C	-1.18368200	-2.73748500	5.17786900
N	-1.64069800	-3.25242200	3.89857000
C	-2.07173700	2.94807900	4.85405500
S	-1.47651500	1.22572200	4.69452900
C	0.99452000	-5.46543500	4.17868900
C	2.03892800	-5.38662600	3.00566500
O	3.16612300	-4.89549400	3.27376800
O	1.66319200	-5.82526700	1.88858500
C	4.33464200	-6.48757700	0.40523800
C	3.66305100	-6.81604500	-0.90086700
N	4.34465500	-7.23759200	-2.03649800
C	2.34358900	-6.76169000	-1.24593200
C	3.47484200	-7.44134600	-3.02232000
N	2.25528700	-7.15788700	-2.56684700
C	8.21710600	1.39012700	3.55860100
C	7.53200900	0.00155700	3.56048400

C	6.03018900	-0.03333800	3.29882200
O	5.55939200	0.27714800	2.20324400
N	5.26863500	-0.43619000	4.33051300
C	6.32710800	-1.19903700	-0.78124700
C	4.89446800	-1.67776500	-0.98913400
C	4.41506600	-2.81903000	-0.33773500
C	4.02345500	-0.97084800	-1.82360100
C	3.10205300	-3.25673000	-0.52049900
C	2.72223500	-1.42296700	-2.03601000
C	2.25608400	-2.56568800	-1.38849400
O	2.98584500	2.24267300	-2.76482500
O	-4.89391100	-9.21658400	1.02552600
O	-0.08016700	-7.85715900	2.11480500
H	-2.97870600	-6.27454700	-1.85270600
H	-2.48707800	-4.56529100	-2.08182500
H	-1.14004600	-6.41603900	-0.08328100
H	-3.80854000	-5.65700500	0.30546800
H	-3.28049700	-3.28607200	0.18896300
H	-3.22820300	-3.58496800	1.94247700
H	-0.74368200	-3.83057800	1.80940700
H	-0.88810100	0.52274700	-1.09367600
H	3.49717300	0.04992800	1.34034600
H	3.22715900	-3.02300500	2.93178100
H	4.26596600	-1.81833700	2.29560800
H	-2.23947100	1.21846800	-4.51550100
H	-0.77900100	0.39543100	-3.86897700
H	-0.46115300	3.83798800	-4.58478800
H	-0.67241400	4.45904400	-1.68030600
H	-5.61370300	-2.16409700	0.42518700
H	-6.55959200	-0.66042600	0.54153500
H	-6.71596300	-1.21339300	2.86822900
H	-2.61306200	-3.47765000	8.80429600
H	-2.87852800	-2.46975300	7.38422500
H	-0.39460100	-3.92945700	8.29154500
H	-0.10383400	-2.40472900	7.48129000
H	-0.36558500	-4.56105800	5.99806200
H	-2.08883700	-4.36136000	6.27383800
H	-0.17333900	-2.32378800	5.04396200
H	-1.80493400	-1.90581000	5.56552300
H	-2.52392000	-3.74747700	4.01461200
H	-1.81556100	-2.46905300	3.26927500
H	-3.07973000	2.94632700	5.31019200
H	-2.17876500	3.31965300	3.82127300
H	-1.66824300	0.85107600	5.99490100
H	0.06169900	-5.93493000	3.84568000
H	0.74653400	-4.40122700	4.37025500
H	3.71700900	-5.77330500	0.95904800
H	5.29574300	-5.99816100	0.13374700
H	5.38477100	-7.33667400	-2.13348100
H	1.48818200	-6.44792700	-0.67856200
H	3.72305500	-7.78613600	-4.01780800
H	1.36738600	-7.20979400	-3.10562000
H	8.62407200	1.59379100	4.56130200
H	7.47767500	2.18724800	3.34517200
H	7.93745200	-0.62646700	2.75145800

H	7.75091700	-0.52465000	4.49648900
H	5.67003300	-0.82936600	5.17301500
H	4.30220000	-0.72326100	4.15645100
H	6.61893700	-1.35191700	0.27575700
H	6.38913100	-0.11109800	-0.95249800
H	5.07477400	-3.36961100	0.33417100
H	4.34876400	-0.05122000	-2.30350900
H	2.70941800	-4.09749400	0.04821900
H	2.05654200	-0.84990900	-2.68247600
H	1.23331200	-2.91234800	-1.52540900
H	2.39935700	1.68389100	-3.30960800
H	2.78356700	1.94594500	-1.85564000
H	-5.02797400	-9.32181200	0.05312000
H	-4.99802000	-8.22616800	1.23260600
H	0.35148700	-6.99850700	1.88873000
H	-1.00927600	-7.64243100	2.27981200
H	-0.02567953	5.55611723	-2.96910187
H	-1.73026917	5.25264963	-2.86057263
H	-0.63633242	1.59004509	-5.21351625
H	-1.39108231	3.56138586	5.40674287
H	-7.33289750	-2.23118011	0.80486656
H	9.00136158	1.40571071	2.83086456
H	7.01841904	-1.71427360	-1.41490330
H	4.53443055	-7.36167807	0.98913170
H	1.37470724	-5.92417521	5.06746067
H	-3.61524823	-6.15830780	4.85825624
H	-1.22778839	-6.45177713	-3.32410311
H	-2.01983818	-1.78852420	8.79142661

Deglycosylation K249-GB: TS3-K_{GB} E = -3875.502299 a.u.

O	-1.00533500	-6.19027100	-2.12018200
C	-2.12826000	-5.76117900	-1.38193800
C	-1.87462300	-6.09274600	0.08772200
O	-1.18007000	-4.94912300	0.72736700
C	-3.10951300	-6.23229800	0.95582000
O	-2.65246400	-6.94576800	2.11196300
C	-3.39274000	-4.78258700	1.33344000
C	-2.00213800	-4.25073500	1.40024100
N	-2.21222000	-1.64933600	0.53359400
C	-2.78913500	-0.89029900	-0.46747700
N	-1.83631800	0.00229500	-0.96239800
C	-0.67088700	-0.15649500	-0.22490200
C	0.59102300	0.44445800	-0.28495200
O	0.99414300	1.39730900	-0.98342000
N	1.46872300	-0.15417400	0.65579500
C	1.17830900	-1.25154100	1.41937500
N	2.23204900	-1.75840100	2.17324700
N	-0.01250200	-1.78374000	1.49049000
C	-0.94279100	-1.21894700	0.64953800
O	-3.95065500	-0.95859400	-0.88289900
P	-3.68879400	-7.86041800	2.95300200
O	-2.82753000	-8.87178400	3.70860200
O	-4.65157300	-8.56453800	1.98641400
O	-4.51284200	-6.81902900	3.83124700

C	-1.06518300	1.41556400	-4.31021700
C	-1.19599700	2.59186000	-3.31822900
O	-1.91258100	2.47989700	-2.33474000
N	-0.48663400	3.72118100	-3.55015400
C	-0.64785700	4.85811600	-2.66752500
C	-6.41693200	-1.64966700	0.88545900
O	-6.01170800	-1.71851000	2.23725200
C	-2.06570600	-2.77118600	8.07793200
C	-2.16238000	-2.45399100	6.55933400
C	-3.59336700	-2.53867000	6.00215200
C	-3.91757800	-1.66245400	4.79305800
N	-3.13028000	-1.99342400	3.59303100
C	-2.05296700	2.88445300	4.86226400
S	-1.42009800	1.17545700	4.70156200
C	0.77542800	-5.55390700	4.18671500
C	1.47766200	-5.70400400	2.77549000
O	2.35720800	-4.86640900	2.48745000
O	1.08722800	-6.69658100	2.09645200
C	4.28264500	-6.53374400	0.37985100
C	3.68613100	-6.84735300	-0.96277800
N	4.41094500	-7.19668700	-2.09482400
C	2.37335100	-6.84007500	-1.33159300
C	3.57008600	-7.39548200	-3.10650100
N	2.32939700	-7.18247600	-2.66725300
C	8.26156500	1.29130600	3.71104700
C	7.34693300	0.04852200	3.67588200
C	5.96004200	0.28304900	3.07426400
O	5.78256600	1.08372700	2.16734100
N	4.97222400	-0.48808100	3.58531600
C	6.38119600	-1.24336400	-0.71787300
C	4.92736500	-1.61562400	-0.98202800
C	4.35785300	-2.74347400	-0.38291200
C	4.12483100	-0.82253200	-1.80981800
C	3.02599300	-3.09177100	-0.61917200
C	2.80281700	-1.17883700	-2.07051000
C	2.25039000	-2.31443800	-1.47919100
O	2.98584000	2.27772600	-2.72514300
O	-1.56205000	-9.31703200	1.12600000
O	-2.03101800	-4.40934200	3.69458200
H	-3.06155700	-6.27846200	-1.68320200
H	-2.29358100	-4.67867600	-1.49322600
H	-1.20474600	-6.94380400	0.17500100
H	-3.94179400	-6.75708600	0.47293500
H	-3.88476500	-4.23829300	0.50173400
H	-3.98342200	-4.63392000	2.23463300
H	-1.63923500	-3.30335800	1.75822900
H	-2.06976300	0.81701600	-1.52232600
H	2.42844300	0.17387600	0.60352700
H	2.04504200	-2.71778700	2.48080100
H	3.09831900	-1.77212100	1.63705300
H	-2.09381700	1.08427800	-4.56067300
H	-0.56449200	0.59483600	-3.74537900
H	-0.07583400	3.87255700	-4.46940300
H	-0.58425600	4.49187500	-1.62594700
H	-5.59142500	-2.05928300	0.28728500

H	-6.53473400	-0.59970000	0.55393700
H	-6.65766400	-1.25337900	2.80195600
H	-1.14174700	-3.34749900	8.27925300
H	-2.89429800	-3.44545700	8.36497600
H	-1.53818000	-3.16716300	6.01454600
H	-1.72820000	-1.46555100	6.34601000
H	-3.81021800	-3.57930400	5.74614500
H	-4.31943100	-2.27578400	6.79033000
H	-3.79784800	-0.60220800	5.06448600
H	-4.97113500	-1.81664700	4.53771000
H	-2.52100100	-3.50572200	3.68584900
H	-3.68751600	-1.82621300	2.75102900
H	-3.06567700	2.86254300	5.30685800
H	-2.15251000	3.26683500	3.83418700
H	-1.61165600	0.80841400	6.00448800
H	-0.24863600	-5.93862800	4.09289000
H	0.72076500	-4.46089000	4.39716000
H	3.60518800	-5.85783100	0.92151200
H	5.22968900	-5.99167500	0.17540000
H	5.45949200	-7.27384200	-2.17689700
H	1.49615000	-6.60787300	-0.75776900
H	3.85430800	-7.68775000	-4.10834100
H	1.45242000	-7.22843900	-3.23033400
H	8.73497500	1.34274300	4.70577700
H	7.63108200	2.19630800	3.59458900
H	7.78881000	-0.75227700	3.05956900
H	7.23792300	-0.37935500	4.67946900
H	5.08645200	-1.08681100	4.39817200
H	4.03224700	-0.42900200	3.20983600
H	6.63497900	-1.48216100	0.33319700
H	6.51570800	-0.15310100	-0.81852300
H	4.96179000	-3.35392400	0.28891400
H	4.51737500	0.09025300	-2.24805000
H	2.58276700	-3.93002700	-0.08508500
H	2.19226600	-0.53302500	-2.70099700
H	1.20847100	-2.57214600	-1.65366700
H	2.44362100	1.82627300	-3.40076300
H	2.51073600	2.01470000	-1.91090700
H	-0.88922700	-9.67665100	0.51319300
H	-1.12275700	-8.60420300	1.62476100
H	-1.12924400	-4.16992500	3.95061800
H	-2.32322600	-1.37391000	3.50073200
H	-1.61193064	5.29997451	-2.80973285
H	-1.37943810	3.48680506	5.43535283
H	0.09832495	5.59056855	-2.89473803
H	9.02759402	1.28549508	2.96400900
H	7.06233539	-1.76305100	-1.35886798
H	4.48768955	-7.42323170	0.93812365
H	1.25379120	-6.02139207	5.02189544
H	-7.32062797	-2.18783798	0.68897596
H	-4.04873056	-6.56976940	4.63378686
H	-1.20891180	-6.44363100	-3.02348992
H	-2.04647601	-1.91196141	8.71531989
H	-0.52675245	1.66241617	-5.20131551

Deglycosylation K249-GB: PC-K_{GB} E = -3875.577054 a.u. (107.79i cm⁻¹)

O	-1.12719900	-5.94924600	-2.42695800
C	-2.29465300	-5.81070200	-1.62601700
C	-1.96906600	-6.40400900	-0.26387900
O	-0.83558200	-5.74965600	0.28235700
C	-3.02331500	-6.18394400	0.81424100
O	-2.54540200	-6.97321900	1.93898000
C	-2.81032000	-4.71452300	1.13269700
C	-1.30119900	-4.52595700	0.85883800
N	-1.00561900	-1.46119400	1.13736000
C	-1.58913900	-0.62317200	0.18873200
N	-0.57398200	0.21380000	-0.22972700
C	0.59931700	-0.08665600	0.45740500
C	1.90784100	0.45068000	0.40095700
O	2.33888500	1.40112200	-0.26077900
N	2.76249300	-0.25064600	1.27226000
C	2.41104500	-1.34689000	2.00832300
N	3.41356100	-1.93595400	2.72962700
N	1.18684100	-1.81780200	2.08459300
C	0.31690800	-1.14991600	1.29806300
O	-2.75115400	-0.64268000	-0.19127200
P	-3.55516400	-7.72268500	2.94788200
O	-2.69244400	-8.69770600	3.75064100
O	-4.61169100	-8.48505800	2.13192300
O	-4.21669300	-6.52413700	3.78156400
C	-1.15027900	1.37082500	-4.32016600
C	-1.08969100	2.47272000	-3.23240000
O	-1.49332500	2.22934100	-2.10359100
N	-0.63267300	3.69406600	-3.59098800
C	-0.76443800	4.83171600	-2.70320200
C	-6.42611400	-1.71918900	0.94307600
O	-6.05610500	-1.67008700	2.29349400
C	-2.00411900	-2.79782900	8.19144700
C	-1.87390500	-2.66934300	6.66117600
C	-3.19322900	-2.44863100	5.91001500
C	-3.13681700	-2.87001000	4.43805400
N	-2.16185900	-2.14669900	3.62109600
C	-2.09585700	2.89541700	4.85946300
S	-1.48630700	1.17749800	4.71486500
C	0.99032700	-5.48988600	4.15747300
C	2.10060200	-5.31779900	3.04478000
O	3.21145100	-4.84326800	3.39187200
O	1.76921900	-5.69517900	1.89211800
C	4.35619900	-6.47591000	0.37335100
C	3.64874900	-6.77228800	-0.91948600
N	4.30732300	-7.19043200	-2.06937700
C	2.32390600	-6.68720900	-1.24275700
C	3.42003800	-7.36403400	-3.04595500
N	2.21415100	-7.06448100	-2.56840100
C	8.22464400	1.38903400	3.60523100
C	7.57821600	-0.01331800	3.64617700
C	6.08698900	-0.06921800	3.35500700
O	5.64610300	0.21303400	2.23886200
N	5.30458700	-0.43562400	4.38312400

C	6.35084500	-1.16563400	-0.77907400
C	4.91650200	-1.65286600	-0.94201000
C	4.45290300	-2.77025300	-0.24064400
C	4.02232900	-0.96443100	-1.76724700
C	3.12812000	-3.19635400	-0.35321700
C	2.70906200	-1.40534600	-1.91192900
C	2.25602000	-2.51592000	-1.20251300
O	2.94915500	2.39146800	-2.83083300
O	-1.38016700	-9.42862000	1.27645800
O	-0.63354700	-4.29242200	2.04608900
H	-3.19792800	-6.31247300	-2.03574700
H	-2.53146000	-4.74387400	-1.53883100
H	-1.72316700	-7.46301100	-0.38026700
H	-4.04395800	-6.48189600	0.54450800
H	-3.41010000	-4.07945800	0.46371800
H	-3.06226000	-4.45554200	2.16022100
H	-1.10825800	-3.71918200	0.13138100
H	-0.73719300	0.96628400	-0.89243400
H	3.73259500	0.07103800	1.31670400
H	3.21365400	-2.89260600	3.04304200
H	4.33042100	-1.84009000	2.30095900
H	-2.22501900	1.20077700	-4.54358900
H	-0.74927000	0.44402900	-3.85540300
H	-0.39008300	3.86924300	-4.56607700
H	-0.67848100	4.46047100	-1.66441500
H	-5.59211800	-2.20796600	0.41840100
H	-6.53752300	-0.70425800	0.50918200
H	-6.75360100	-1.24863500	2.83084900
H	-1.16166100	-3.41903600	8.56051800
H	-2.91519000	-3.38103200	8.42320200
H	-1.43284600	-3.60726300	6.30313300
H	-1.14727300	-1.88668000	6.40176500
H	-3.99757600	-3.01039300	6.41352700
H	-3.49346100	-1.39053000	5.96166200
H	-4.11996300	-2.72593500	3.97590900
H	-2.89737000	-3.93613300	4.36778100
H	-1.54720000	-2.04276300	1.79685600
H	-2.30775100	-1.14101500	3.72347900
H	-3.10688100	2.88823000	5.30780800
H	-2.19454400	3.26314200	3.82488900
H	-1.69149400	0.80273100	6.01544300
H	0.11411600	-5.99850300	3.74339800
H	0.65509500	-4.45994000	4.41187700
H	3.75783300	-5.76342600	0.94956900
H	5.31757000	-5.99481700	0.08815400
H	5.34134900	-7.30496600	-2.17738100
H	1.46986300	-6.36916500	-0.66784900
H	3.64558200	-7.69756700	-4.05051900
H	1.31369800	-7.09323200	-3.09901100
H	8.64097300	1.62463500	4.59738800
H	7.46257900	2.16273200	3.38613700
H	8.01028600	-0.65564800	2.86316800
H	7.78779900	-0.50465500	4.60311000
H	5.69431100	-0.81360900	5.23770400
H	4.34762100	-0.74545500	4.18579000

H	6.66404000	-1.29106200	0.27564700
H	6.39870500	-0.08070100	-0.97346700
H	5.13534300	-3.30905600	0.41830900
H	4.33771600	-0.06280600	-2.28618300
H	2.75711300	-4.02100000	0.25273500
H	2.02511400	-0.84712000	-2.55128300
H	1.22355200	-2.84484100	-1.29413200
H	2.39584600	1.78539300	-3.36063200
H	2.80015800	2.08321700	-1.91427300
H	-0.96932100	-9.66274900	0.41808200
H	-1.23867900	-8.46834600	1.39646700
H	0.31252600	-4.46992800	1.86929200
H	-1.20884500	-2.34995000	3.92421800
H	-0.02897869	5.57215343	-2.93932063
H	-1.73488886	5.26149796	-2.83889504
H	-7.32328438	-2.27117639	0.75520576
H	8.99773959	1.40645132	2.86569071
H	7.03660283	-1.68473536	-1.41560363
H	4.55774799	-7.36075936	0.94020161
H	-3.87347662	-6.46316591	4.67603873
H	-1.28097568	-6.40300025	-3.25885933
H	1.37985599	-5.96753238	5.03212785
H	-1.99001440	-1.89446242	8.76470948
H	-1.41804482	3.50627318	5.41832378
H	-0.62271586	1.62158739	-5.21665658

Deglycosylation D268-GB: RC3-D_{GB} E = -3875.59852 a.u.

O	-0.96326000	-6.10003500	-2.23704400
C	-2.10865800	-5.71109900	-1.48860800
C	-1.67154900	-5.73125200	-0.03685800
O	-0.71027300	-4.68568200	0.16567500
C	-2.79219900	-5.48211100	0.97434400
O	-2.42039700	-6.14481500	2.21722000
C	-2.72090700	-3.98482200	1.18457500
C	-1.21472400	-3.70575900	1.05372300
N	-0.87445500	-2.36715200	0.58863200
C	-1.54224100	-1.58721400	-0.38817300
N	-0.73942200	-0.48665100	-0.59144500
C	0.39875600	-0.56738900	0.20669300
C	1.59527500	0.19882000	0.22298900
O	1.85977700	1.23096400	-0.39380900
N	2.53395100	-0.37659100	1.10304400
C	2.37230500	-1.56430400	1.76060900
N	3.40699500	-1.97966800	2.54002100
N	1.26853400	-2.28008400	1.70188300
C	0.32477700	-1.75199200	0.90279200
O	-2.61736000	-1.81760200	-0.91685800
P	-3.30735400	-7.33011100	2.84723300
O	-2.31889900	-8.30524700	3.51665200
O	-4.17165200	-8.07700400	1.83043100
O	-4.27337700	-6.59667300	3.89026500
C	-1.18345400	1.32760100	-4.31242300
C	-1.06854000	2.40441600	-3.20033500
O	-1.36442400	2.11429600	-2.04969600

N	-0.70502600	3.65373300	-3.58433200
C	-0.83450200	4.80915700	-2.71886000
C	-6.42383800	-1.75751900	0.97263600
O	-6.01691100	-1.70288700	2.31226500
C	-2.04667400	-2.75304300	8.25053000
C	-1.34113400	-2.76521200	6.89018600
C	-2.21611200	-2.26761700	5.74303600
C	-1.57953500	-2.51251600	4.37685400
N	-0.19283100	-2.05056200	4.36556300
C	-2.12873400	2.93987700	4.84594200
S	-1.53067000	1.22353500	4.69447000
C	1.00636000	-5.42339300	4.22369100
C	2.04127800	-5.28715900	3.04048600
O	3.16237800	-4.79245300	3.31129500
O	1.66953700	-5.71426900	1.91532900
C	4.38784800	-6.42750300	0.41571900
C	3.70831900	-6.75829800	-0.88519500
N	4.38590600	-7.17637400	-2.02396600
C	2.38656400	-6.70364000	-1.22411200
C	3.51087100	-7.37723000	-3.00690600
N	2.29433400	-7.09553800	-2.54523000
C	8.18562500	1.49243600	3.55758700
C	7.51480600	0.09601300	3.55692000
C	6.01605200	0.03869400	3.27955000
O	5.55063900	0.33266400	2.17650000
N	5.24953200	-0.37141900	4.30479800
C	6.32703900	-1.11667200	-0.78924500
C	4.90681100	-1.61299300	-1.03221400
C	4.43860200	-2.77350100	-0.40900100
C	4.04382700	-0.91585300	-1.88300300
C	3.14220400	-3.23858400	-0.63245900
C	2.76053300	-1.39593100	-2.13835800
C	2.30519200	-2.55702000	-1.51617600
O	2.95234600	2.29031200	-2.79139200
O	-1.30035400	-9.49216700	0.71413100
O	0.11123700	-7.78009000	2.12798700
H	-2.96218800	-6.40437900	-1.61894900
H	-2.43231900	-4.69358900	-1.76126900
H	-1.19574300	-6.69258500	0.16792200
H	-3.76876900	-5.85320900	0.64244800
H	-3.24850400	-3.47829100	0.36927800
H	-3.14348800	-3.66040000	2.13673600
H	-0.69664200	-3.81715800	2.01109300
H	-1.02688900	0.31938200	-1.14473500
H	3.43616700	0.09682500	1.17956300
H	3.33826200	-2.96287200	2.83790100
H	4.32358800	-1.68294500	2.21341500
H	-2.26730100	1.19374900	-4.51885000
H	-0.79864800	0.37947300	-3.87847300
H	-0.52857500	3.82421700	-4.57441700
H	-0.74206300	4.45612900	-1.67396300
H	-5.59734000	-2.23271000	0.42260100
H	-6.56355300	-0.74262400	0.54337200
H	-6.71163000	-1.30037300	2.86795900
H	-1.59967500	-3.55014100	8.88209100

H	-3.10803900	-3.03282100	8.11262100
H	-1.03460800	-3.79598300	6.67294800
H	-0.40628400	-2.19588600	6.91820800
H	-3.19671400	-2.76208700	5.77658400
H	-2.42566500	-1.19528700	5.87109900
H	-2.20796900	-2.05164000	3.59552200
H	-1.56899700	-3.59149900	4.18650400
H	0.29226700	-2.38899300	3.53741000
H	-0.16962300	-1.03182300	4.30529200
H	-3.13891600	2.93368200	5.29708200
H	-2.22977500	3.31475800	3.81328000
H	-1.68405200	0.87043100	6.00504600
H	0.08790100	-5.91956200	3.88925100
H	0.73299600	-4.37813600	4.50040300
H	3.76162800	-5.72664400	0.97924200
H	5.33594700	-5.91633400	0.13928500
H	5.42386800	-7.27254200	-2.12506900
H	1.52858200	-6.38135900	-0.66372100
H	3.75411800	-7.71810500	-4.00485200
H	1.39581700	-7.14426200	-3.08046800
H	8.58991600	1.69754400	4.56097200
H	7.43827100	2.28280700	3.34650500
H	7.93695400	-0.52957500	2.75458200
H	7.72961900	-0.42425700	4.49700800
H	5.64226300	-0.75049300	5.15810900
H	4.28564700	-0.65944700	4.12635500
H	6.60341800	-1.27557000	0.27064800
H	6.38267100	-0.02716600	-0.95223600
H	5.09319700	-3.31605100	0.27372500
H	4.36162100	0.01547600	-2.34476400
H	2.75469700	-4.09048100	-0.07785800
H	2.10033900	-0.83050900	-2.79762800
H	1.29488900	-2.92511100	-1.68538100
H	2.36366300	1.74467700	-3.34754600
H	2.74338500	1.97549600	-1.89091100
H	-0.97085100	-10.01768700	-0.05012600
H	-0.55556500	-8.91811800	1.02250000
H	0.49440400	-6.87896300	1.91681200
H	-0.74562900	-7.64717500	2.57305100
H	-1.80789383	5.23078152	-2.85900677
H	-0.10862995	5.55505803	-2.96713691
H	8.97043783	1.51893761	2.83076756
H	7.02773375	-1.62447476	-1.41858054
H	4.61065011	-7.30211988	0.99044026
H	-3.85699645	-6.46716731	4.74551672
H	-7.31563383	-2.32404314	0.80337115
H	-1.17339396	-6.47384586	-3.09594397
H	-1.44947400	3.54881205	5.40514139
H	-0.66779682	1.58290691	-5.21454082
H	-1.98269069	-1.83926599	8.80353788
H	1.42581773	-5.90013363	5.08489573

Deglycosylation D268-GB: TS3-D_{GB} E = -3875.500019 a.u. (334.58i cm⁻¹)

O	-1.45704000	-5.56075500	-2.61388000
C	-2.61756600	-5.39470600	-1.82006800
C	-2.33019800	-6.03183100	-0.46161600
O	-1.04612900	-5.44436800	-0.06231100
C	-3.29153500	-5.78180500	0.72307100
O	-3.45717100	-7.03902600	1.41555300
C	-2.54320700	-4.74932400	1.54543100
C	-1.13304900	-4.99397700	1.13608000
N	-0.99916500	-2.36672800	0.52812700
C	-1.73569000	-1.57743500	-0.33225300
N	-0.98592800	-0.43685700	-0.64906500
C	0.20844100	-0.49334800	0.06102100
C	1.36338200	0.30102700	0.06825000
O	1.60402800	1.37915600	-0.50796000
N	2.35322800	-0.27314400	0.90986500
C	2.23900100	-1.47369600	1.54575000
N	3.32429200	-1.86048900	2.31478300
N	1.17008900	-2.22299100	1.50979400
C	0.15171300	-1.71865600	0.74312300
O	-2.87510500	-1.80875800	-0.75847000
P	-3.72067900	-7.53204400	2.91774500
O	-2.43242900	-8.22408900	3.42819900
O	-4.82852600	-8.58730100	2.83013600
O	-4.05181300	-6.20157100	3.74726900
C	-1.15329300	1.35793100	-4.30547000
C	-1.09989500	2.45785500	-3.21436600
O	-1.51325300	2.20922700	-2.09347800
N	-0.62950500	3.68048700	-3.57322800
C	-0.76232000	4.83008600	-2.70336300
C	-6.43001800	-1.68902300	0.97277600
O	-6.04842900	-1.65521400	2.32028000
C	-2.07626000	-2.74345800	8.22862100
C	-1.34666400	-2.75626600	6.87546300
C	-2.21308800	-2.29600000	5.70341600
C	-1.59508500	-2.61147300	4.34303800
N	-0.20204100	-2.17174600	4.28344400
C	-2.08954700	2.94748900	4.85516700
S	-1.50761900	1.22451100	4.70413300
C	0.94544600	-5.40123000	4.24138300
C	1.95115800	-5.42572300	3.04160500
O	3.04194600	-4.85778200	3.15664900
O	1.59159800	-6.13305700	2.02944500
C	4.34545800	-6.47581400	0.39977700
C	3.74708200	-6.80065100	-0.94178600
N	4.48362600	-7.16307000	-2.06213100
C	2.43961300	-6.78306500	-1.33294900
C	3.65888200	-7.36278200	-3.08490900
N	2.41298700	-7.13637700	-2.66602900
C	8.22805200	1.41920900	3.60796100
C	7.49780100	0.05927900	3.66873500
C	6.03621500	0.04996100	3.22717100
O	5.70070700	0.43910200	2.10994800
N	5.15900200	-0.42527000	4.13057000

C	6.33255200	-1.16925400	-0.77923600
C	4.89512100	-1.54807700	-1.10975700
C	4.35014300	-2.74212000	-0.63007100
C	4.09732900	-0.71934200	-1.90412400
C	3.04151500	-3.10856700	-0.93887400
C	2.79738500	-1.09547800	-2.23581900
C	2.26169600	-2.28720000	-1.75351000
O	2.93718200	2.35575000	-2.76093100
O	-1.57168700	-9.34627100	0.98024700
O	-0.75112000	-6.78954800	1.92984100
H	-3.53425000	-5.85480200	-2.24271800
H	-2.78968400	-4.32058700	-1.68803100
H	-2.15407100	-7.10686900	-0.56152200
H	-4.28698400	-5.44427300	0.39002900
H	-2.75081900	-3.73738800	1.15704300
H	-2.74488000	-4.76935900	2.61051500
H	-0.25259900	-4.49920800	1.53329600
H	-1.33483000	0.36315000	-1.16639900
H	3.23216600	0.23493300	0.97523500
H	3.24538500	-2.83675200	2.60849500
H	4.21766600	-1.65429600	1.86874400
H	-2.22693200	1.17925900	-4.52867900
H	-0.74346800	0.43435300	-3.84022500
H	-0.39765500	3.84860400	-4.55176800
H	-0.68243000	4.47190600	-1.66054600
H	-5.59963100	-2.16744900	0.43061200
H	-6.54998300	-0.66909100	0.55137800
H	-6.73121800	-1.21392700	2.86093000
H	-1.65363400	-3.55445600	8.85897700
H	-3.13876800	-3.00548400	8.06840400
H	-1.01574900	-3.78410600	6.67829200
H	-0.42226000	-2.16923900	6.91335600
H	-3.20046400	-2.77478200	5.76258500
H	-2.40888200	-1.21667500	5.78296400
H	-2.22808700	-2.19349500	3.54438100
H	-1.59282600	-3.70146200	4.21614200
H	0.17929200	-2.36001300	3.35460600
H	-0.16954500	-1.15488700	4.38143000
H	-3.10163700	2.95085200	5.30231400
H	-2.18610200	3.32184200	3.82366700
H	-1.67208400	0.87718000	6.01482100
H	-0.03129300	-5.81291400	3.96040100
H	0.77970100	-4.33101500	4.50781000
H	3.69111800	-5.77722200	0.93072100
H	5.30360000	-5.95851000	0.18053700
H	5.53799900	-7.23519400	-2.13773400
H	1.54887700	-6.51946700	-0.79507000
H	3.95927800	-7.66538500	-4.07908000
H	1.54853100	-7.17689100	-3.23689900
H	8.66902600	1.62567100	4.59673200
H	7.50239200	2.23195200	3.40471700
H	7.97281300	-0.65616300	2.97918300
H	7.58315500	-0.37661800	4.67012300
H	5.44983200	-0.85011200	5.00476100
H	4.22596500	-0.69437500	3.81281600

H	6.55379100	-1.40027900	0.28006100
H	6.47218700	-0.07950200	-0.87777700
H	4.95913700	-3.39122100	0.00067200
H	4.47509600	0.23323500	-2.26314600
H	2.61238300	-4.01182000	-0.51159700
H	2.18410800	-0.42556000	-2.83861100
H	1.23392600	-2.56215000	-1.97788400
H	2.34511800	1.86613700	-3.36311600
H	2.63990600	2.03470700	-1.88208700
H	-1.30350700	-9.67602100	0.09547400
H	-1.24082900	-8.42575300	1.06258800
H	0.28240500	-6.60107200	2.05250700
H	-1.20904200	-7.18461700	2.70861800
H	-0.02728793	5.56886058	-2.94593254
H	-1.73071038	5.26356954	-2.84197066
H	-1.40742166	3.54988453	5.41794995
H	-0.63079672	1.60990381	-5.20458475
H	8.99864687	1.41772819	2.86561246
H	7.02309235	-1.69362246	-1.40620629
H	4.54052041	-7.35478903	0.97792365
H	1.35797373	-5.91635307	5.08362352
H	-3.83284986	-6.31682210	4.67483157
H	-7.32985519	-2.23880190	0.79129268
H	-1.49062637	-6.20747194	-3.32256128
H	-2.00844511	-1.83785745	8.79447327

Deglycosylation D268-GB: PC-D_{GB} E = -3875.53412 a.u.

O	-1.40178600	-5.79074200	-2.23776200
C	-2.65996600	-5.38290300	-1.71005200
C	-2.88348200	-6.13190400	-0.39402700
O	-1.68381700	-6.05354800	0.37714300
C	-3.94638400	-5.54050100	0.52969800
O	-4.43374300	-6.57696800	1.44350900
C	-3.18807600	-4.40815900	1.19387100
C	-1.72163400	-4.85410200	1.14267600
N	-1.41784800	-1.82392200	0.42194900
C	-2.25540000	-1.25584700	-0.52138200
N	-1.63139600	-0.12841000	-1.06954900
C	-0.41926800	0.05090200	-0.41345400
C	0.65229400	0.91850100	-0.61271800
O	0.78191700	1.89851100	-1.39030000
N	1.71853100	0.61469300	0.27182200
C	1.76362200	-0.49525700	1.06668500
N	2.95267300	-0.70928900	1.75908100
N	0.77343600	-1.32138100	1.23302600
C	-0.33047100	-1.05145200	0.46612100
O	-3.37710000	-1.65247200	-0.86106800
P	-3.93190000	-7.15248700	2.82833900
O	-2.44549500	-7.59422800	2.81421300
O	-4.77654800	-8.40358400	3.11554900
O	-4.13258700	-5.91505000	3.82223400
C	-1.10761300	1.29657900	-4.30582600
C	-1.28115800	2.50166600	-3.35965000
O	-2.03446400	2.40691300	-2.40224300

N	-0.55855000	3.62112400	-3.60628600
C	-0.70188400	4.77576300	-2.74798900
C	-6.41676900	-1.66649400	0.99588000
O	-6.02055400	-1.67474300	2.34066100
C	-2.07351300	-2.66404000	8.26225700
C	-1.48277700	-2.67285700	6.83893700
C	-2.44276600	-2.17916200	5.75273500
C	-2.09354700	-2.64489500	4.33728800
N	-0.67778600	-2.43292900	4.01186000
C	-2.04948600	2.98017300	4.83033800
S	-1.44014900	1.26577300	4.67989200
C	0.86391800	-5.44527400	4.33042800
C	1.86413400	-5.30191100	3.15943200
O	3.04634000	-5.06924300	3.30767700
O	1.35831000	-5.50251100	1.94671700
C	4.30935000	-6.53292300	0.49170900
C	3.73612000	-6.87189900	-0.85898500
N	4.49668500	-7.25314400	-1.95723300
C	2.43795300	-6.85210500	-1.28369300
C	3.69497600	-7.46626800	-2.99517500
N	2.44081500	-7.22859900	-2.60902400
C	8.27527400	1.38334500	3.64831800
C	7.41681000	0.09949900	3.67292200
C	6.01817500	0.24538900	3.08264000
O	5.83450700	0.80314200	2.00344500
N	5.01468400	-0.28130000	3.81143300
C	6.36591900	-1.26407100	-0.70724700
C	4.92163400	-1.68473700	-0.94080000
C	4.39975900	-2.84115100	-0.34842500
C	4.07708100	-0.90002400	-1.72789700
C	3.07123200	-3.20895100	-0.54790700
C	2.75168700	-1.27868700	-1.94946700
C	2.24256800	-2.43193500	-1.36107000
O	3.10570400	1.95111900	-2.88631500
O	-1.43041500	-8.90074700	0.78328200
O	-1.16088200	-5.18870300	2.39304600
H	-3.51960100	-5.58609000	-2.37938600
H	-2.62400900	-4.29969500	-1.54115200
H	-3.07969800	-7.19372800	-0.59807700
H	-4.86163600	-5.22042300	0.00477400
H	-3.29497300	-3.49386900	0.58868400
H	-3.53352600	-4.17582700	2.20155100
H	-1.08168600	-4.07407600	0.71183300
H	-2.10780100	0.59487000	-1.59832900
H	2.56926200	1.13962800	0.09857300
H	3.02340500	-1.69662800	1.99437200
H	3.79103800	-0.39779500	1.26734400
H	-2.12024400	0.90847600	-4.53760600
H	-0.56458200	0.52567700	-3.70860300
H	-0.12342400	3.73978400	-4.51820000
H	-0.62494500	4.42161700	-1.70095300
H	-5.59363200	-2.12269200	0.42503500
H	-6.54160100	-0.63358100	0.60824500
H	-6.67997300	-1.21197100	2.89132400
H	-1.54621900	-3.44041800	8.85664000

H	-3.12769200	-2.99251500	8.20502700
H	-1.20916400	-3.71019900	6.61003900
H	-0.53832900	-2.11608000	6.79922100
H	-3.45951500	-2.53071600	5.98173100
H	-2.50390000	-1.08247200	5.77981200
H	-2.77628500	-2.14911500	3.62960500
H	-2.28186400	-3.72040500	4.26126600
H	-0.54496800	-2.61072600	3.01370000
H	-0.45896600	-1.43866500	4.11060400
H	-3.05856800	2.97247100	5.28418400
H	-2.15694800	3.35157900	3.79897500
H	-1.60163700	0.91907600	5.99014500
H	-0.02513300	-5.99602600	4.02162200
H	0.51215300	-4.41112300	4.57038900
H	3.64042800	-5.83369900	1.00307200
H	5.25823400	-5.99500400	0.28863700
H	5.55435700	-7.32576500	-2.01622500
H	1.52694100	-6.58196700	-0.78489300
H	4.01903100	-7.78622400	-3.97623700
H	1.58329900	-7.27886800	-3.19317800
H	8.75601300	1.49400000	4.63456100
H	7.61695400	2.26412600	3.50519300
H	7.89021500	-0.69326900	3.07174700
H	7.34411800	-0.29270900	4.69343300
H	5.14722400	-0.80914400	4.67041900
H	4.07677100	-0.27136600	3.41346900
H	6.64462400	-1.45951400	0.34659500
H	6.46989800	-0.17464600	-0.84190500
H	5.04010900	-3.44699000	0.29403500
H	4.43393000	0.03045400	-2.15910400
H	2.65627000	-4.07374500	-0.03615800
H	2.10683600	-0.63968000	-2.55262400
H	1.20128400	-2.70996900	-1.50082300
H	2.82519500	1.29891400	-3.55736900
H	2.29104000	2.04266900	-2.33666300
H	-1.16590600	-9.24110900	-0.10051600
H	-1.35191900	-7.92269300	0.73849000
H	0.35304300	-5.46012000	2.00931300
H	-1.60266500	-6.03073200	2.66490200
H	-1.37004053	3.59024626	5.38806954
H	-1.66685592	5.21496205	-2.89232679
H	0.03908180	5.50702455	-2.99522618
H	-0.58289610	1.52954214	-5.20876584
H	-7.32019594	-2.21044492	0.81466975
H	-3.88780503	-6.14933543	4.72045008
H	-1.44696886	-6.32110434	-3.03668271
H	1.31722847	-5.91613757	5.17759806
H	4.50996836	-7.40125515	1.08386738
H	9.03217107	1.36591145	2.89220763
H	7.04494662	-1.78757118	-1.34737906
H	-2.01141747	-1.75374820	8.82119616