

## Supporting Information

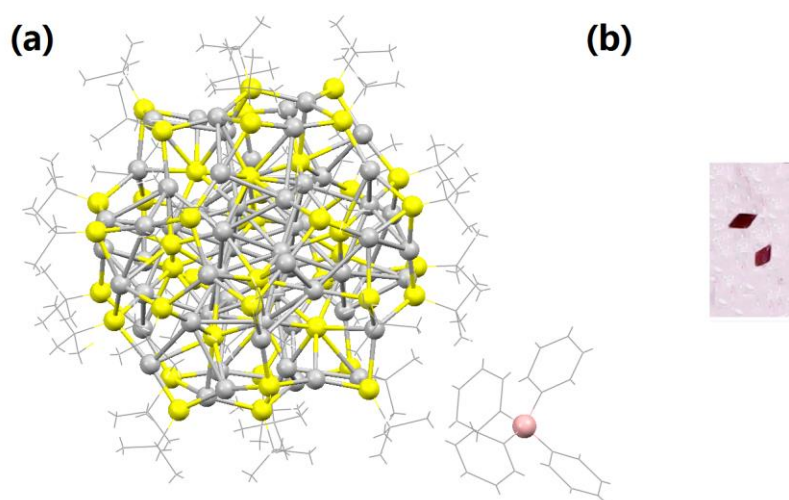
# Crystal Structure and Optical Properties of $[\text{Ag}_{62}\text{S}_{12}(\text{SBU}^{\dagger})_{32}]^{2+}$ Nanocluster with a Complete Face-Centered Cubic Kernel

Shan Jin,<sup>†,||</sup> Shuxin Wang,<sup>†,||</sup> Yongbo Song,<sup>†</sup> Meng Zhou,<sup>‡</sup> Juan Zhong,<sup>§</sup> Jun Zhang,<sup>†</sup> Andong Xia,<sup>‡</sup> Yong Pei,<sup>§</sup> Man Chen,<sup>†</sup> Peng Li,<sup>†</sup> and Manzhou Zhu<sup>\*†</sup>

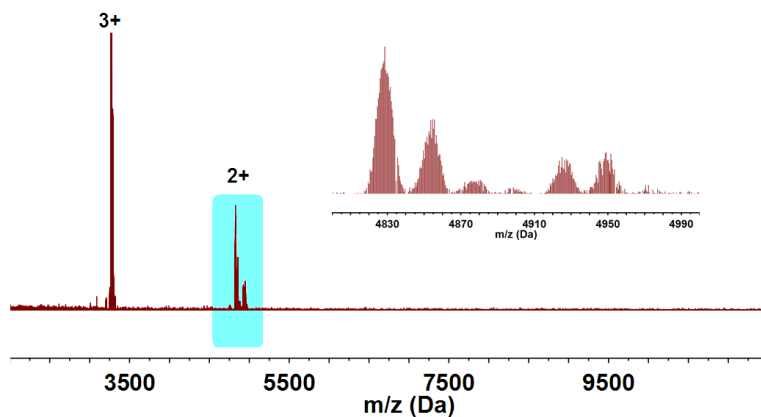
<sup>†</sup> Department of Chemistry and Center for Atomic Engineering of Advanced Materials, Anhui University, Hefei, Anhui 230601, People's Republic of China

<sup>‡</sup> The State Key Laboratory of Molecular Reaction Dynamics, and Beijing National Laboratory for Molecular Sciences (BNLMS), Institute of Chemistry, Chinese Academy of Sciences, Beijing 100190, People's Republic of China

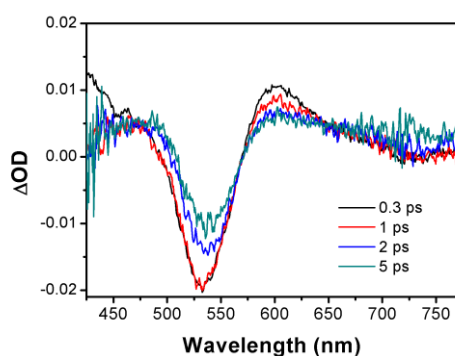
<sup>§</sup> Department of Chemistry, Key Laboratory of Environmentally Friendly Chemistry and Applications of Ministry of Education, Xiangtan University, Hunan 411105, People's Republic of China



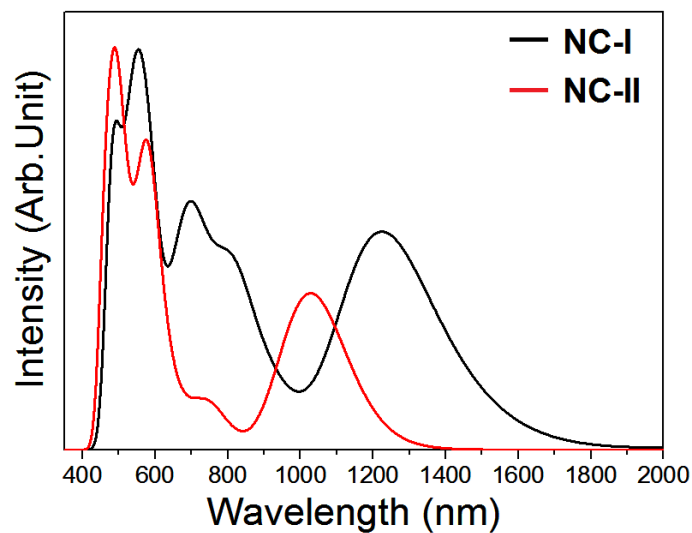
**Figure S1.** (a) Crystal structure of the thiolate-protected  $[\text{Ag}_{62}\text{S}_{12}(\text{SBU}^{\dagger})_{32}](\text{BPh}_4)_2$  nanocluster, (Color labels: light gray = Ag, light yellow = S, pink = B, all C and H atoms were shown in wireframe). (b) digital photo of the crystal of NC-I.



**Figure S2.** The ESI-MS analysis of NC-I.



**Figure S3.** The evolution-associated transient absorption spectra at difference time delays of NC-II after dissolved  $O_2$ . Compared with Figure 6a, the ESA around 500 nm is significantly quenched, suggesting the transient absorption at 500 nm is from a triplet excited state of LMCT in NC-II cluster.



**Figure S4.** The optical absorption spectra of NC-I (black line) and NC-II (red line) computed by PBE functional.

### 3. X-ray Crystallographic Determination

**Table S1.** Crystal data and structure refinement for  $[\text{Ag}_{62}\text{S}_{12}(\text{SBu}^{\dagger})_{32}](\text{BPh}_4)_2$

Chemical formula	$\text{C}_{128}\text{H}_{288}\text{Ag}_{62}\text{S}_{44}\cdot 2(\text{C}_{24}\text{H}_{20}\text{B})$
Formula Mass	10564.56
Crystal system	Triclinic
$a/\text{\AA}$	21.4604(15)
$b/\text{\AA}$	21.6292(15)
$c/\text{\AA}$	22.0437(17)
$\alpha/^\circ$	88.052(2)
$\beta/^\circ$	64.744(2)
$\gamma/^\circ$	60.903(3)
Unit cell volume/ $\text{\AA}^3$	7888.8(10)
Temperature/K	173(2)
Space group	$P\bar{1}$
No. of formula units per unit cell, $Z$	1
No. of reflections measured	100384
No. of independent reflections	38195
$R_{int}$	0.0263
Final $R_I$ values ( $I > 2\sigma(I)$ )	0.0607
Final $wR(F^2)$ values ( $I > 2\sigma(I)$ )	0.1505
Final $R_I$ values (all data)	0.0655
Final $wR(F^2)$ values (all data)	0.1571

**Table S2.** Atomic coordinates and equivalent isotropic displacement parameters ( $\text{\AA}^2$ ) for  $[\text{Ag}_{62}\text{S}_{12}(\text{SBu}^{\dagger})_{32}]^{2+}$ .

	X	Y	Z
Ag1	0.41951(3)	0.10806(3)	0.53702(2)
Ag2	0.41111(3)	-0.01425(3)	0.50564(3)
Ag3	0.47479(3)	-0.01416(3)	0.59634(3)
Ag4	0.29457(3)	0.08344(3)	0.64684(3)
Ag5	0.53585(3)	0.14258(3)	0.43071(3)
Ag6	0.34957(3)	0.11722(3)	0.44373(3)
Ag7	0.48051(3)	0.11675(3)	0.63377(3)
Ag8	0.27461(3)	-0.04634(3)	0.63906(3)
Ag9	0.21178(3)	0.21413(3)	0.58655(3)
Ag10	0.27117(4)	0.27490(3)	0.40818(3)
Ag11	0.14551(3)	0.05201(3)	0.55577(3)
Ag12	0.15383(3)	0.18590(3)	0.49200(3)
Ag13	0.28965(3)	-0.16618(3)	0.52318(3)
Ag14	0.18045(3)	0.31866(3)	0.72166(3)

---

Ag15	0.32871(3)	-0.06155(3)	0.44120(3)
Ag16	0.26542(3)	0.35950(3)	0.53314(3)
Ag17	0.10704(3)	0.15564(3)	0.67982(3)
Ag18	0.29364(4)	0.06563(3)	0.33486(3)
Ag19	0.45144(3)	0.17377(3)	0.34334(3)
Ag20	0.42772(4)	0.31477(3)	0.39935(3)
Ag21	0.45116(4)	0.07631(4)	0.22391(3)
Ag22	0.65029(4)	0.17006(3)	0.29464(3)
Ag23	0.33430(4)	0.24805(3)	0.77085(3)
Ag24	0.35277(3)	0.26289(3)	0.61879(3)
Ag25	0.53850(4)	0.22779(3)	0.64448(3)
Ag26	0.53113(4)	0.09460(4)	0.75739(3)
Ag27	0.42328(3)	0.03947(3)	0.74868(3)
Ag28	0.65849(4)	0.06073(3)	0.18967(3)
Ag29	0.18633(4)	0.03112(3)	0.79237(3)
Ag30	0.49036(3)	-0.28943(3)	0.48370(3)
Ag31	0.20328(3)	0.18385(3)	0.80402(3)
C25	0.1049(4)	-0.0669(5)	0.6771(5)
C26	0.0370(4)	0.0088(4)	0.7184(4)
H26A	-0.01490	0.01330	0.73140
H26B	0.04200	0.04410	0.69070
H26C	0.04000	0.01820	0.76000
C27	0.1304(5)	-0.1097(6)	0.7256(5)
H27A	0.14350	-0.15920	0.71360
H27B	0.08630	-0.08680	0.77270
H27C	0.17810	-0.11100	0.72220
C28	0.0758(5)	-0.0988(4)	0.6475(4)
H28A	0.02530	-0.06050	0.64890
H28B	0.06610	-0.13340	0.67380
H28C	0.11630	-0.12400	0.59970
C29	0.3607(5)	-0.3335(4)	0.4161(4)
C30	0.3563(5)	-0.3817(4)	0.4725(5)
H30A	0.33080	-0.40750	0.46860
H30B	0.32440	-0.35020	0.51850
H30C	0.41100	-0.41680	0.46510
C31	0.2844(5)	-0.2910(5)	0.4118(5)
H31A	0.24170	-0.25610	0.45560
H31B	0.26880	-0.32380	0.40240
H31C	0.29220	-0.26480	0.37470
C32	0.4343(6)	-0.3896(4)	0.3471(4)
H32A	0.43740	-0.36520	0.30850
H32B	0.42690	-0.42940	0.33980
H32C	0.48450	-0.40890	0.35010
C33	0.2514(5)	0.4552(4)	0.3964(5)
C34	0.1589(5)	0.4983(5)	0.4340(6)
H34A	0.13960	0.51150	0.48340
H34B	0.13920	0.46850	0.42610
H34C	0.13870	0.54240	0.41660
C35	0.2719(5)	0.5092(4)	0.4100(5)
H35A	0.23960	0.55540	0.40050
H35B	0.32940	0.49060	0.38010
H35C	0.26000	0.51660	0.45820
C36	0.2638(6)	0.4565(5)	0.3240(5)
H36A	0.25340	0.42170	0.30930
H36B	0.31960	0.44330	0.29330
H36C	0.22650	0.50530	0.32210
C37	0.4526(5)	0.2795(5)	0.8233(4)
C38	0.4109(6)	0.2663(7)	0.8964(5)
H38A	0.35880	0.27360	0.90490
H38B	0.40220	0.30060	0.93140
H38C	0.44560	0.21660	0.89840
C39	0.5454(6)	0.2581(6)	0.7967(6)
H39A	0.54620	0.29170	0.82460
H39B	0.56880	0.26110	0.74840
H39C	0.57700	0.20850	0.80100
C40	0.4006(5)	0.3573(5)	0.8218(5)
H40A	0.42050	0.38640	0.83090
H40B	0.34470	0.37640	0.85710
H40C	0.40290	0.35960	0.77650
C41	0.1427(5)	0.2655(5)	0.3560(5)
C42	0.0592(7)	0.3312(4)	0.4100(5)

---

---

H42A	0.04230	0.37240	0.38820
H42B	0.06460	0.34520	0.44850
H42C	0.01870	0.31720	0.42700
C43	0.1796(7)	0.2832(4)	0.2903(5)
H43A	0.15620	0.28070	0.26140
H43B	0.23800	0.24830	0.26680
H43C	0.16940	0.33220	0.29870
C44	0.1076(4)	0.2216(4)	0.3501(4)
H44A	0.15010	0.17720	0.31440
H44B	0.06440	0.25010	0.33790
H44C	0.08570	0.20890	0.39420
C45	0.0555(6)	0.3981(5)	0.6406(5)
C46	0.0273(6)	0.4779(5)	0.6741(6)
H46A	-0.03180	0.50730	0.69890
H46B	0.04770	0.50060	0.63770
H46C	0.04890	0.47430	0.70610
C47	0.0380(6)	0.3993(5)	0.5839(5)
H47A	-0.02060	0.42520	0.60140
H47B	0.06230	0.34940	0.56060
H47C	0.06040	0.42390	0.55140
C48	-0.0017(6)	0.3858(5)	0.7023(5)
H48A	0.02420	0.33420	0.70310
H48B	-0.05130	0.40130	0.69920
H48C	-0.01500	0.41400	0.74450
C49	-0.0502(5)	0.2228(5)	0.6102(5)
C50	-0.0946(5)	0.3040(4)	0.6232(4)
H50A	-0.15060	0.32400	0.65900
H50B	-0.09420	0.31940	0.58070
H50C	-0.06820	0.32170	0.63840
C51	-0.0485(4)	0.1909(5)	0.5512(5)
H51A	-0.10390	0.21200	0.55840
H51B	-0.02330	0.13830	0.54670
H51C	-0.01730	0.20130	0.50910
C52	-0.0882(5)	0.1980(6)	0.6751(6)
H52A	-0.04540	0.15960	0.68350
H52B	-0.11880	0.17940	0.66840
H52C	-0.12450	0.23920	0.71470
C53	0.3138(6)	0.4431(5)	0.6419(5)
C54	0.3226(5)	0.5055(4)	0.6038(4)
H54A	0.37990	0.48760	0.57360
H54B	0.29940	0.54840	0.63820
H54C	0.29390	0.51840	0.57640
C55	0.2229(6)	0.4674(5)	0.6859(5)
H55A	0.21490	0.45020	0.72870
H55B	0.20740	0.44690	0.65990
H55C	0.18940	0.52050	0.69660
C56	0.3448(6)	0.4167(4)	0.6922(5)
H56A	0.35270	0.36840	0.69610
H56B	0.30560	0.45020	0.73720
H56C	0.39640	0.41400	0.67640
C57	0.0101(4)	0.2020(4)	0.8531(4)
C58	-0.0336(4)	0.1633(5)	0.8535(5)
H58A	-0.02400	0.15110	0.80670
H58B	-0.09170	0.19520	0.88370
H58C	-0.01310	0.11880	0.87020
C59	0.0194(6)	0.1910(6)	0.9174(5)
H59A	-0.03400	0.21330	0.95780
H59B	0.04810	0.21360	0.92090
H59C	0.05030	0.13900	0.91540
C60	-0.0374(5)	0.2817(4)	0.8588(4)
H60A	-0.00670	0.30330	0.85950
H60B	-0.08880	0.30360	0.90130
H60C	-0.04790	0.29070	0.81920
C61	0.3839(6)	0.0168(5)	0.1335(5)
C62	0.3620(7)	0.0896(7)	0.1121(6)
H62A	0.30370	0.11870	0.12810
H62B	0.39080	0.08110	0.06190
H62C	0.37770	0.11560	0.13250
C63	0.4576(7)	-0.0518(5)	0.0769(5)
H63A	0.44720	-0.05480	0.03830
H63B	0.46610	-0.09510	0.09590

---

---

H63C	0.50590	-0.04860	0.06090
C64	0.3170(7)	0.0030(6)	0.1496(6)
H64A	0.28730	0.02980	0.12470
H64B	0.28020	0.01920	0.19910
H64C	0.33990	-0.04900	0.13530
C65	0.5868(5)	0.3431(4)	0.3480(5)
C66	0.5740(6)	0.3558(5)	0.2874(5)
H66A	0.62210	0.31900	0.24690
H66B	0.56420	0.40410	0.28030
H66C	0.52730	0.35300	0.29460
C67	0.6738(5)	0.3163(6)	0.3278(6)
H67B	0.68590	0.35370	0.31090
H67C	0.70920	0.27210	0.29150
H67A	0.68290	0.30590	0.36790
C68	0.5239(6)	0.4127(3)	0.4069(5)
H68A	0.48320	0.44740	0.39430
H68B	0.55140	0.43470	0.41410
H68C	0.49750	0.39960	0.44940
C69	0.2008(5)	-0.1213(5)	0.8837(5)
C70	0.1119(7)	-0.0601(7)	0.9338(6)
H70A	0.10180	-0.06150	0.98140
H70B	0.07420	-0.06790	0.92620
H70C	0.10410	-0.01280	0.92510
C71	0.2283(5)	-0.1398(5)	0.9412(5)
H71A	0.28540	-0.17830	0.92030
H71B	0.19580	-0.15630	0.97560
H71C	0.22070	-0.09640	0.96330
C72	0.1793(6)	-0.1755(5)	0.8776(6)
H72A	0.15420	-0.18450	0.92310
H72B	0.22820	-0.22090	0.84680
H72C	0.14120	-0.15700	0.85870
C73	0.4867(6)	0.2134(5)	0.1775(5)
C74	0.3964(7)	0.2543(8)	0.2105(7)
H74A	0.37910	0.22860	0.19210
H74B	0.37670	0.30300	0.20080
H74C	0.37440	0.25840	0.26030
C75	0.5367(9)	0.1866(7)	0.1016(4)
H75A	0.50620	0.21800	0.07900
H75B	0.55050	0.13690	0.08910
H75C	0.58640	0.18720	0.08680
C76	0.4952(6)	0.2749(6)	0.2022(5)
H76A	0.44630	0.30700	0.24480
H76B	0.50230	0.30290	0.16670
H76C	0.54210	0.25300	0.21040
C77	0.1906(6)	-0.0314(6)	0.3806(5)
C78	0.1412(6)	0.0132(9)	0.3475(6)
H78A	0.16560	-0.01270	0.30030
H78B	0.13900	0.05950	0.34680
H78C	0.08640	0.02220	0.37360
C79	0.2679(5)	-0.1028(4)	0.3342(5)
H79A	0.25610	-0.14160	0.33750
H79B	0.30890	-0.11520	0.34900
H79C	0.28830	-0.09740	0.28650
C80	0.1476(5)	-0.0620(4)	0.4397(5)
H80A	0.18790	-0.10190	0.44950
H80B	0.12090	-0.07970	0.42500
H80C	0.10730	-0.02330	0.48130
C81	0.1267(6)	0.3798(5)	0.8929(5)
C82	0.1751(6)	0.4192(5)	0.8678(6)
H82A	0.13900	0.47080	0.89010
H82B	0.19750	0.41360	0.81780
H82C	0.21930	0.39770	0.87980
C83	0.0462(6)	0.4222(5)	0.9005(6)
H83A	0.04220	0.46120	0.87560
H83B	0.00720	0.44310	0.94930
H83C	0.03450	0.39100	0.88170
C84	0.1312(8)	0.3601(8)	0.9626(6)
H84A	0.09940	0.33750	0.98400
H84B	0.10940	0.40440	0.99430
H84C	0.18760	0.32620	0.95170
C85	0.2784(5)	0.1037(5)	0.9225(4)

---

---

C86	0.3281(7)	0.0330(6)	0.9456(5)
H86A	0.29210	0.03190	0.99110
H86B	0.37230	0.03420	0.94740
H86C	0.35030	-0.01040	0.91230
C87	0.2973(7)	0.1633(6)	0.9297(6)
H87A	0.27640	0.18180	0.97840
H87B	0.27150	0.20300	0.90970
H87C	0.35580	0.14240	0.90540
C88	0.1892(6)	0.1342(6)	0.9755(4)
H88A	0.16210	0.18660	0.99150
H88B	0.18640	0.11080	1.01470
H88C	0.16230	0.12440	0.95400
S1	0.15974(11)	0.33801(9)	0.62486(10)
S2	0.18479(9)	-0.05508(9)	0.6067(1)
S3	0.22119(12)	0.20613(11)	0.38366(11)
S4	0.05258(11)	0.18788(10)	0.59813(10)
S5	0.21900(11)	0.01516(10)	0.41907(10)
S6	0.51218(13)	0.14275(13)	0.22321(11)
S7	0.39136(12)	-0.27509(10)	0.44115(10)
S8	0.19062(12)	0.30535(9)	0.82437(10)
S9	0.55972(10)	0.27600(9)	0.38149(9)
S10	0.29849(12)	0.36864(11)	0.41056(12)
S11	0.1115(1)	0.15569(10)	0.78507(9)
S12	0.46147(13)	0.21957(12)	0.7573(1)
S13	0.24097(13)	-0.08678(11)	0.81246(9)
S14	0.35967(12)	0.36084(10)	0.57436(11)
S15	0.29845(10)	0.07156(9)	0.84173(9)
S16	0.33307(10)	0.17060(9)	0.67060(8)
S17	0.25963(10)	0.08895(9)	0.54925(9)
S18	0.39787(14)	0.01383(12)	0.20925(10)
S19	0.38641(10)	0.20801(9)	0.46479(9)
S20	0.44286(10)	0.01032(9)	0.34306(9)
S21	0.56976(10)	0.14164(9)	0.52934(9)
S22	0.36133(10)	-0.04005(9)	0.67528(9)
Ag1	0.58049(3)	-0.10806(3)	0.46298(2)
Ag2	0.58889(3)	0.01425(3)	0.49436(3)
Ag3	0.52521(3)	0.01416(3)	0.40366(3)
Ag4	0.70543(3)	-0.08344(3)	0.35316(3)
Ag5	0.46415(3)	-0.14258(3)	0.56929(3)
Ag6	0.65043(3)	-0.11722(3)	0.55627(3)
Ag7	0.51949(3)	-0.11675(3)	0.36623(3)
Ag8	0.72539(3)	0.04634(3)	0.36094(3)
Ag9	0.78822(3)	-0.21413(3)	0.41345(3)
Ag10	0.72883(4)	-0.27490(3)	0.59182(3)
Ag11	0.85449(3)	-0.05201(3)	0.44423(3)
Ag12	0.84617(3)	-0.18590(3)	0.50800(3)
Ag13	0.71035(3)	0.16618(3)	0.47682(3)
Ag14	0.81955(3)	-0.31866(3)	0.27834(3)
Ag15	0.67129(3)	0.06155(3)	0.55880(3)
Ag16	0.73458(3)	-0.35950(3)	0.46686(3)
Ag17	0.89296(3)	-0.15564(3)	0.32018(3)
Ag18	0.70636(4)	-0.06563(3)	0.66514(3)
Ag19	0.54856(3)	-0.17377(3)	0.65666(3)
Ag20	0.57228(4)	-0.31477(3)	0.60065(3)
Ag21	0.54884(4)	-0.07631(4)	0.77609(3)
Ag22	0.34971(4)	-0.17006(3)	0.70536(3)
Ag23	0.66570(4)	-0.24805(3)	0.22915(3)
Ag24	0.64723(3)	-0.26289(3)	0.38121(3)
Ag25	0.46150(4)	-0.22779(3)	0.35552(3)
Ag26	0.46887(4)	-0.09460(4)	0.24261(3)
Ag27	0.57672(3)	-0.03947(3)	0.25132(3)
Ag28	0.34151(4)	-0.06073(3)	0.81033(3)
Ag29	0.81367(4)	-0.03112(3)	0.20763(3)
Ag30	0.50964(3)	0.28943(3)	0.51630(3)
Ag31	0.79672(3)	-0.18385(3)	0.19598(3)
C25	0.8951(4)	0.0669(5)	0.3229(5)
C26	0.9630(4)	-0.0088(4)	0.2816(4)
H26A	1.01490	-0.01330	0.26860
H26B	0.95800	-0.04410	0.30930
H26C	0.96000	-0.01820	0.24000
C27	0.8696(5)	0.1097(6)	0.2744(5)

---

---

H27A	0.85650	0.15920	0.28640
H27B	0.91370	0.08680	0.22730
H27C	0.82190	0.11100	0.27780
C28	0.9242(5)	0.0988(4)	0.3525(4)
H28A	0.97470	0.06050	0.35110
H28B	0.93390	0.13340	0.32620
H28C	0.88370	0.12400	0.40030
C29	0.6393(5)	0.3335(4)	0.5839(4)
C30	0.6437(5)	0.3817(4)	0.5275(5)
H30A	0.66920	0.40750	0.53140
H30B	0.67560	0.35020	0.48150
H30C	0.58900	0.41680	0.53490
C31	0.7156(5)	0.2910(5)	0.5882(5)
H31A	0.75830	0.25610	0.54440
H31B	0.73120	0.32380	0.59760
H31C	0.70780	0.26480	0.62530
C32	0.5657(6)	0.3896(4)	0.6529(4)
H32A	0.56260	0.36520	0.69150
H32B	0.57310	0.42940	0.66020
H32C	0.51550	0.40890	0.64990
C33	0.7486(5)	-0.4552(4)	0.6036(5)
C34	0.8411(5)	-0.4983(5)	0.5660(6)
H34A	0.86040	-0.51150	0.51660
H34B	0.86080	-0.46850	0.57390
H34C	0.86130	-0.54240	0.58340
C35	0.7281(5)	-0.5092(4)	0.5900(5)
H35A	0.76040	-0.55540	0.59950
H35B	0.67060	-0.49060	0.61990
H35C	0.74000	-0.51660	0.54180
C36	0.7362(6)	-0.4565(5)	0.6760(5)
H36A	0.74660	-0.42170	0.69070
H36B	0.68040	-0.44330	0.70670
H36C	0.77350	-0.50530	0.67790
C37	0.5474(5)	-0.2795(5)	0.1767(4)
C38	0.5891(6)	-0.2663(7)	0.1036(5)
H38A	0.64120	-0.27360	0.09510
H38B	0.59780	-0.30060	0.06860
H38C	0.55440	-0.21660	0.10160
C39	0.4546(6)	-0.2581(6)	0.2033(6)
H39A	0.45380	-0.29170	0.17540
H39B	0.43120	-0.26110	0.25160
H39C	0.42300	-0.20850	0.19900
C40	0.5994(5)	-0.3573(5)	0.1782(5)
H40A	0.57950	-0.38640	0.16910
H40B	0.65530	-0.37640	0.14290
H40C	0.59710	-0.35960	0.22350
C41	0.8573(5)	-0.2655(5)	0.6440(5)
C42	0.9408(7)	-0.3312(4)	0.5900(5)
H42A	0.95770	-0.37240	0.61180
H42B	0.93540	-0.34520	0.55150
H42C	0.98130	-0.31720	0.57300
C43	0.8204(7)	-0.2832(4)	0.7097(5)
H43A	0.84380	-0.28070	0.73860
H43B	0.76200	-0.24830	0.73320
H43C	0.83060	-0.33220	0.70130
C44	0.8924(4)	-0.2216(4)	0.6499(4)
H44A	0.84990	-0.17720	0.68560
H44B	0.93560	-0.25010	0.66210
H44C	0.91430	-0.20890	0.60580
C45	0.9445(6)	-0.3981(5)	0.3594(5)
C46	0.9727(6)	-0.4779(5)	0.3259(6)
H46A	1.03180	-0.50730	0.30110
H46B	0.95230	-0.50060	0.36230
H46C	0.95110	-0.47430	0.29390
C47	0.9620(6)	-0.3993(5)	0.4161(5)
H47A	1.02060	-0.42520	0.39860
H47B	0.93770	-0.34940	0.43940
H47C	0.93960	-0.42390	0.44860
C48	1.0017(6)	-0.3858(5)	0.2977(5)
H48A	0.97580	-0.33420	0.29690
H48B	1.05130	-0.40130	0.30080

---



---

H48C	1.01500	-0.41400	0.25550
C49	1.0502(5)	-0.2228(5)	0.3898(5)
C50	1.0946(5)	-0.3040(4)	0.3768(4)
H50A	1.15060	-0.32400	0.34100
H50B	1.09420	-0.31940	0.41930
H50C	1.06820	-0.32170	0.36160
C51	1.0485(4)	-0.1909(5)	0.4488(5)
H51A	1.10390	-0.21200	0.44160
H51B	1.02330	-0.13830	0.45330
H51C	1.01730	-0.20130	0.49090
C52	1.0882(5)	-0.1980(6)	0.3249(6)
H52A	1.04540	-0.15960	0.31650
H52B	1.11880	-0.17940	0.33160
H52C	1.12450	-0.23920	0.28530
C53	0.6862(6)	-0.4431(5)	0.3581(5)
C54	0.6774(5)	-0.5055(4)	0.3962(4)
H54A	0.62010	-0.48760	0.42640
H54B	0.70060	-0.54840	0.36180
H54C	0.70610	-0.51840	0.42360
C55	0.7771(6)	-0.4674(5)	0.3141(5)
H55A	0.78510	-0.45020	0.27130
H55B	0.79260	-0.44690	0.34010
H55C	0.81060	-0.52050	0.30340
C56	0.6552(6)	-0.4167(4)	0.3078(5)
H56A	0.64730	-0.36840	0.30390
H56B	0.69440	-0.45020	0.26280
H56C	0.60360	-0.41400	0.32360
C57	0.9899(4)	-0.2020(4)	0.1469(4)
C58	1.0336(4)	-0.1633(5)	0.1465(5)
H58A	1.02400	-0.15110	0.19330
H58B	1.09170	-0.19520	0.11630
H58C	1.01310	-0.11880	0.12980
C59	0.9806(6)	-0.1910(6)	0.0826(5)
H59A	1.03400	-0.21330	0.04220
H59B	0.95190	-0.21360	0.07910
H59C	0.94970	-0.13900	0.08460
C60	1.0374(5)	-0.2817(4)	0.1412(4)
H60A	1.00670	-0.30330	0.14050
H60B	1.08880	-0.30360	0.09870
H60C	1.04790	-0.29070	0.18080
C61	0.6161(6)	-0.0168(5)	0.8665(5)
C62	0.6380(7)	-0.0896(7)	0.8879(6)
H62A	0.69630	-0.11870	0.87190
H62B	0.60920	-0.08110	0.93810
H62C	0.62230	-0.11560	0.86750
C63	0.5424(7)	0.0518(5)	0.9231(5)
H63A	0.55280	0.05480	0.96170
H63B	0.53390	0.09510	0.90410
H63C	0.49410	0.04860	0.93910
C64	0.6830(7)	-0.0030(6)	0.8504(6)
H64A	0.71270	-0.02980	0.87530
H64B	0.71980	-0.01920	0.80090
H64C	0.66010	0.04900	0.86470
C65	0.4132(5)	-0.3431(4)	0.6520(5)
C66	0.4260(6)	-0.3558(5)	0.7126(5)
H66A	0.37790	-0.31900	0.75310
H66B	0.43580	-0.40410	0.71970
H66C	0.47270	-0.35300	0.70540
C67	0.3262(5)	-0.3163(6)	0.6722(6)
H67B	0.31410	-0.35370	0.68910
H67C	0.29080	-0.27210	0.70850
H67A	0.31710	-0.30590	0.63210
C68	0.4761(6)	-0.4127(3)	0.5931(5)
H68A	0.51680	-0.44740	0.60570
H68B	0.44860	-0.43470	0.58590
H68C	0.50250	-0.39960	0.55060
C69	0.7992(5)	0.1213(5)	0.1163(5)
C70	0.8881(7)	0.0601(7)	0.0662(6)
H70A	0.89820	0.06150	0.01860
H70B	0.92580	0.06790	0.07380
H70C	0.89590	0.01280	0.07490

---

---

C71	0.7717(5)	0.1398(5)	0.0588(5)
H71A	0.71460	0.17830	0.07970
H71B	0.80420	0.15630	0.02440
H71C	0.77930	0.09640	0.03670
C72	0.8207(6)	0.1755(5)	0.1224(6)
H72A	0.84580	0.18450	0.07690
H72B	0.77180	0.22090	0.15320
H72C	0.85880	0.15700	0.14130
C73	0.5133(6)	-0.2134(5)	0.8225(5)
C74	0.6036(7)	-0.2543(8)	0.7895(7)
H74A	0.62090	-0.22860	0.80790
H74B	0.62330	-0.30300	0.79920
H74C	0.62560	-0.25840	0.73970
C75	0.4633(9)	-0.1866(7)	0.8984(4)
H75A	0.49380	-0.21800	0.92100
H75B	0.44950	-0.13690	0.91090
H75C	0.41360	-0.18720	0.91320
C76	0.5048(6)	-0.2749(6)	0.7978(5)
H76A	0.55370	-0.30700	0.75520
H76B	0.49770	-0.30290	0.83330
H76C	0.45790	-0.25300	0.78960
C77	0.8094(6)	0.0314(6)	0.6194(5)
C78	0.8588(6)	-0.0132(9)	0.6525(6)
H78A	0.83440	0.01270	0.69970
H78B	0.86100	-0.05950	0.65320
H78C	0.91360	-0.02220	0.62640
C79	0.7321(5)	0.1028(4)	0.6658(5)
H79A	0.74390	0.14160	0.66250
H79B	0.69110	0.11520	0.65100
H79C	0.71170	0.09740	0.71350
C80	0.8524(5)	0.0620(4)	0.5603(5)
H80A	0.81210	0.10190	0.55050
H80B	0.87910	0.07970	0.57500
H80C	0.89270	0.02330	0.51870
C81	0.8733(6)	-0.3798(5)	0.1071(5)
C82	0.8249(6)	-0.4192(5)	0.1322(6)
H82A	0.86100	-0.47080	0.10990
H82B	0.80250	-0.41360	0.18220
H82C	0.78070	-0.39770	0.12020
C83	0.9538(6)	-0.4222(5)	0.0995(6)
H83A	0.95780	-0.46120	0.12440
H83B	0.99280	-0.44310	0.05070
H83C	0.96550	-0.39100	0.11830
C84	0.8688(8)	-0.3601(8)	0.0374(6)
H84A	0.90060	-0.33750	0.01600
H84B	0.89060	-0.40440	0.00570
H84C	0.81240	-0.32620	0.04830
C85	0.7216(5)	-0.1037(5)	0.0775(4)
C86	0.6719(7)	-0.0330(6)	0.0544(5)
H86A	0.70790	-0.03190	0.00890
H86B	0.62770	-0.03420	0.05260
H86C	0.64970	0.01040	0.08770
C87	0.7027(7)	-0.1633(6)	0.0703(6)
H87A	0.72360	-0.18180	0.02160
H87B	0.72850	-0.20300	0.09030
H87C	0.64420	-0.14240	0.09460
C88	0.8108(6)	-0.1342(6)	0.0245(4)
H88A	0.83790	-0.18660	0.00850
H88B	0.81360	-0.11080	-0.01470
H88C	0.83770	-0.12440	0.04600
S1	0.84026(11)	-0.33801(9)	0.37514(10)
S2	0.81521(9)	0.05508(9)	0.3933(1)
S3	0.77881(12)	-0.20613(11)	0.61634(11)
S4	0.94742(11)	-0.18788(10)	0.40187(10)
S5	0.78100(11)	-0.01516(10)	0.58093(10)
S6	0.48782(13)	-0.14275(13)	0.77679(11)
S7	0.60864(12)	0.27509(10)	0.55885(10)
S8	0.80938(12)	-0.30535(9)	0.17563(10)
S9	0.44028(10)	-0.27600(9)	0.61851(9)
S10	0.70151(12)	-0.36864(11)	0.58944(12)
S11	0.8885(1)	-0.15569(10)	0.21493(9)

---

S12	0.53853(13)	-0.21957(12)	0.2427(1)
S13	0.75903(13)	0.08678(11)	0.18754(9)
S14	0.64033(12)	-0.36084(10)	0.42564(11)
S15	0.70155(10)	-0.07156(9)	0.15827(9)
S16	0.66693(10)	-0.17060(9)	0.32940(8)
S17	0.74037(10)	-0.08895(9)	0.45075(9)
S18	0.60213(14)	-0.01383(12)	0.79075(10)
S19	0.61359(10)	-0.20801(9)	0.53521(9)
S20	0.55714(10)	-0.01032(9)	0.65694(9)
S21	0.43024(10)	-0.14164(9)	0.47066(9)
S22	0.63867(10)	0.04005(9)	0.32472(9)
B1	0.9926(5)	0.2804(5)	0.1969(4)
C1	1.0321(4)	0.1899(4)	0.1664(3)
C2	1.0773(3)	0.1409(4)	0.1931(4)
H2	1.08610	0.15710	0.22650
C3	1.1112(4)	0.0660(4)	0.1713(3)
H3	1.14350	0.03160	0.18920
C4	1.0965(5)	0.0433(4)	0.1230(4)
H4	1.11820	-0.00680	0.10840
C5	1.0504(4)	0.0937(3)	0.0961(4)
H5	1.04180	0.07770	0.06250
C6	1.0167(5)	0.1676(4)	0.1180(4)
H6	0.98400	0.20230	0.10050
C7	1.0637(4)	0.3024(4)	0.1634(3)
C8	1.1449(5)	0.2510(4)	0.1350(4)
H8	1.16130	0.20130	0.13200
C9	1.2040(4)	0.2693(4)	0.1106(3)
H9	1.25970	0.23330	0.09150
C10	1.1775(4)	0.3437(5)	0.1154(3)
H10	1.21620	0.35800	0.09890
C11	1.0968(5)	0.3956(5)	0.1436(3)
H11	1.07990	0.44550	0.14680
C12	1.0402(3)	0.3750(4)	0.1674(3)
H12	0.98440	0.41110	0.18690
C13	0.9470(3)	0.3030(4)	0.2808(3)
C14	0.9045(4)	0.2700(4)	0.3183(3)
H14	0.90270	0.23550	0.29470
C15	0.8649(6)	0.2877(5)	0.3899(4)
H15	0.83560	0.26570	0.41500
C16	0.8682(5)	0.3373(3)	0.4244(4)
H16	0.84100	0.34950	0.47330
C17	0.9111(5)	0.3691(3)	0.3880(4)
H17	0.91320	0.40330	0.41180
C18	0.9518(3)	0.3506(3)	0.3151(3)
H18	0.98260	0.37140	0.29010
C19	0.9246(4)	0.3215(4)	0.1676(3)
C20	0.9474(6)	0.3357(4)	0.1001(5)
H20	1.00180	0.32190	0.07040
C21	0.8916(5)	0.3684(5)	0.0794(5)
H21	0.90580	0.38010	0.03540
C22	0.8115(6)	0.3861(5)	0.1219(4)
H22	0.77220	0.40930	0.10550
C23	0.7879(5)	0.3725(5)	0.1872(4)
H23	0.73410	0.38400	0.21550
C24	0.8461(5)	0.3411(5)	0.2103(5)

**Table S3.** Anisotropic displacement parameters ( $\text{\AA}^2$ ) for  $[\text{Ag}_{62}\text{S}_{12}(\text{SBu}^t)_{32}]^{2+}$ . The anisotropic displacement factor exponent takes the form:  $-2\pi^2 [h^2 a^{*2} U^{11} + \dots + 2 h k a^* b^* U^{12}]$ .

Atom	U11	U22	U33	U12	U13	U23
Ag1	0.0532(2)	0.0566(2)	0.0637(2)	-0.02623(19)	-0.0256(2)	0.00791(19)
Ag2	0.0603(2)	0.0647(3)	0.0658(3)	-0.0329(2)	-0.0286(2)	0.0106(2)
Ag3	0.0601(2)	0.0645(3)	0.0665(3)	-0.0328(2)	-0.0293(2)	0.0110(2)
Ag4	0.0577(2)	0.0611(2)	0.0646(3)	-0.0308(2)	-0.0269(2)	0.0100(2)
Ag5	0.0602(2)	0.0647(3)	0.0667(3)	-0.0329(2)	-0.0291(2)	0.0108(2)
Ag6	0.0588(2)	0.0631(3)	0.0673(3)	-0.0311(2)	-0.0302(2)	0.0123(2)
Ag7	0.0599(2)	0.0647(3)	0.0664(3)	-0.0325(2)	-0.0290(2)	0.0108(2)
Ag8	0.0532(2)	0.0633(3)	0.0710(3)	-0.0312(2)	-0.0279(2)	0.0145(2)

Ag9	0.0558(2)	0.0605(2)	0.0723(3)	-0.0295(2)	-0.0285(2)	0.0102(2)
Ag10	0.0708(3)	0.0688(3)	0.0850(3)	-0.0366(3)	-0.0425(3)	0.0236(3)
Ag11	0.0593(3)	0.0639(3)	0.0829(3)	-0.0321(2)	-0.0351(2)	0.0136(2)
Ag12	0.0620(3)	0.0669(3)	0.0814(3)	-0.0328(2)	-0.0381(2)	0.0170(2)
Ag13	0.0628(3)	0.0615(3)	0.0901(4)	-0.0340(2)	-0.0267(3)	0.0074(2)
Ag14	0.0686(3)	0.0579(3)	0.0734(3)	-0.0249(2)	-0.0278(2)	0.0055(2)
Ag15	0.0604(2)	0.0648(3)	0.0668(3)	-0.0327(2)	-0.0291(2)	0.0108(2)
Ag16	0.0641(3)	0.0596(3)	0.0873(3)	-0.0315(2)	-0.0348(3)	0.0161(2)
Ag17	0.0572(2)	0.0674(3)	0.0754(3)	-0.0332(2)	-0.0284(2)	0.0114(2)
Ag18	0.0735(3)	0.0788(3)	0.0785(3)	-0.0397(3)	-0.0446(3)	0.0194(3)
Ag19	0.0704(3)	0.0717(3)	0.0699(3)	-0.0381(2)	-0.0346(2)	0.0207(2)
Ag20	0.0674(3)	0.0730(3)	0.0921(4)	-0.0395(3)	-0.0358(3)	0.0245(3)
Ag21	0.0849(4)	0.0940(4)	0.0726(3)	-0.0503(3)	-0.0408(3)	0.0234(3)
Ag22	0.0732(3)	0.0694(3)	0.0651(3)	-0.0397(3)	-0.0205(2)	0.0068(2)
Ag23	0.0737(3)	0.0743(3)	0.0701(3)	-0.0410(3)	-0.0284(3)	0.0024(2)
Ag24	0.0656(3)	0.0597(3)	0.0736(3)	-0.0315(2)	-0.0302(2)	0.0090(2)
Ag25	0.0728(3)	0.0707(3)	0.0759(3)	-0.0412(3)	-0.0322(3)	0.0057(2)
Ag26	0.0838(4)	0.0896(4)	0.0790(3)	-0.0524(3)	-0.0466(3)	0.0197(3)
Ag27	0.0607(2)	0.0645(3)	0.0665(3)	-0.0325(2)	-0.0292(2)	0.0108(2)
Ag28	0.0818(3)	0.0736(3)	0.0624(3)	-0.0480(3)	-0.0313(2)	0.0181(2)
Ag29	0.0702(3)	0.0690(3)	0.0710(3)	-0.0344(3)	-0.0247(2)	0.0142(2)
Ag30	0.0598(2)	0.0647(3)	0.0658(3)	-0.0323(2)	-0.0289(2)	0.0109(2)
Ag31	0.0609(2)	0.0638(3)	0.0666(3)	-0.0330(2)	-0.0292(2)	0.0110(2)
B1	0.066(4)	0.097(6)	0.046(3)	-0.049(4)	-0.022(3)	0.009(3)
C1	0.056(3)	0.066(3)	0.045(3)	-0.026(3)	0.007(2)	0.014(3)
C2	0.026(2)	0.093(5)	0.088(5)	-0.025(3)	-0.011(2)	-0.011(4)
C3	0.051(3)	0.092(5)	0.048(3)	-0.042(3)	0.009(2)	0.002(3)
C4	0.075(4)	0.063(4)	0.087(5)	-0.048(3)	-0.017(4)	0.019(3)
C5	0.061(3)	0.062(3)	0.088(4)	-0.051(3)	-0.014(3)	0.024(3)
C6	0.071(4)	0.067(4)	0.062(4)	-0.040(3)	0.008(3)	-0.004(3)
C7	0.067(3)	0.078(4)	0.034(2)	-0.045(3)	-0.010(2)	-0.016(2)
C8	0.076(4)	0.071(4)	0.076(4)	-0.046(4)	-0.025(3)	0.000(3)
C9	0.068(4)	0.086(4)	0.040(2)	-0.048(3)	-0.017(2)	-0.003(3)
C10	0.071(4)	0.116(5)	0.054(3)	-0.072(4)	-0.034(3)	0.040(3)
C11	0.082(5)	0.103(5)	0.052(3)	-0.065(4)	-0.023(3)	0.016(3)
C12	0.043(3)	0.076(4)	0.036(2)	-0.034(3)	0.0085(19)	0.002(2)
C13	0.046(3)	0.088(4)	0.050(3)	-0.044(3)	-0.025(2)	0.015(3)
C14	0.073(4)	0.072(4)	0.052(3)	-0.048(3)	-0.017(3)	0.018(3)
C15	0.140(7)	0.116(6)	0.071(4)	-0.101(6)	-0.071(5)	0.057(4)
C16	0.088(4)	0.056(3)	0.068(4)	-0.030(3)	-0.050(4)	0.031(3)
C17	0.104(5)	0.044(3)	0.079(4)	-0.036(3)	-0.069(4)	0.027(3)
C18	0.035(2)	0.066(3)	0.061(3)	-0.021(2)	-0.026(2)	0.013(2)
C19	0.071(4)	0.100(5)	0.044(3)	-0.052(4)	-0.016(3)	-0.010(3)
C20	0.104(6)	0.058(4)	0.095(5)	-0.042(4)	-0.047(5)	0.048(4)
C21	0.079(5)	0.080(5)	0.092(6)	-0.010(4)	-0.019(4)	0.058(5)
C22	0.090(5)	0.084(5)	0.079(5)	-0.050(5)	-0.030(4)	0.013(4)
C23	0.062(4)	0.083(5)	0.092(5)	-0.038(4)	-0.031(4)	0.019(4)
C24	0.080(5)	0.080(5)	0.080(5)	-0.043(4)	-0.027(4)	-0.001(4)
C25	0.050(3)	0.084(5)	0.094(5)	-0.037(3)	-0.025(3)	0.024(4)
C26	0.055(3)	0.107(5)	0.078(4)	-0.065(4)	-0.009(3)	0.008(4)
C27	0.052(4)	0.118(7)	0.118(7)	-0.050(4)	-0.036(4)	0.052(6)
C28	0.098(5)	0.092(5)	0.073(4)	-0.077(5)	-0.040(4)	0.045(4)
C29	0.091(5)	0.077(4)	0.076(4)	-0.058(4)	-0.045(4)	0.024(3)
C30	0.077(4)	0.053(3)	0.106(6)	-0.026(3)	-0.045(4)	0.016(4)
C31	0.069(4)	0.088(5)	0.092(5)	-0.047(4)	-0.043(4)	0.038(4)
C32	0.107(6)	0.048(3)	0.073(4)	-0.034(4)	-0.036(4)	0.011(3)
C33	0.079(5)	0.060(4)	0.117(6)	-0.033(3)	-0.059(5)	0.011(4)
C34	0.070(5)	0.061(4)	0.134(8)	-0.021(4)	-0.031(5)	0.020(5)
C35	0.073(4)	0.066(4)	0.095(5)	-0.034(4)	-0.034(4)	0.018(4)
C36	0.085(5)	0.073(5)	0.090(6)	-0.032(4)	-0.034(5)	0.017(4)
C37	0.075(4)	0.081(5)	0.077(5)	-0.025(4)	-0.036(4)	-0.014(4)
C38	0.073(5)	0.138(9)	0.082(6)	-0.015(5)	-0.043(5)	0.001(6)
C39	0.087(6)	0.125(8)	0.136(9)	-0.045(6)	-0.080(6)	0.029(7)
C40	0.075(5)	0.077(5)	0.102(6)	-0.037(4)	0.002(5)	-0.021(5)
C41	0.069(4)	0.086(5)	0.092(5)	-0.042(4)	-0.047(4)	0.034(4)
C42	0.155(9)	0.044(3)	0.096(6)	-0.022(4)	-0.089(6)	0.025(3)
C43	0.154(9)	0.063(4)	0.083(5)	-0.066(5)	-0.044(6)	0.033(4)
C44	0.042(3)	0.066(4)	0.066(4)	-0.013(3)	-0.014(3)	-0.011(3)
C45	0.078(5)	0.073(5)	0.100(6)	-0.021(4)	-0.037(5)	0.008(4)
C46	0.073(5)	0.072(5)	0.127(9)	-0.010(4)	0.002(5)	-0.003(5)
C47	0.080(5)	0.094(6)	0.111(7)	-0.032(5)	-0.058(5)	0.022(5)

C48	0.073(5)	0.082(6)	0.086(6)	-0.013(4)	0.003(4)	-0.010(5)
C49	0.060(4)	0.084(5)	0.087(5)	-0.012(4)	-0.036(4)	0.015(4)
C50	0.071(4)	0.078(5)	0.053(3)	-0.009(4)	-0.013(3)	0.007(3)
C51	0.048(3)	0.090(5)	0.121(7)	-0.040(4)	-0.032(4)	0.013(5)
C52	0.058(4)	0.091(6)	0.140(9)	-0.033(4)	0.021(5)	-0.004(6)
C53	0.106(6)	0.076(5)	0.100(6)	-0.057(5)	-0.045(5)	0.007(4)
C54	0.081(5)	0.065(4)	0.079(4)	-0.031(4)	-0.028(4)	-0.020(3)
C55	0.113(7)	0.081(5)	0.098(6)	-0.064(5)	-0.026(5)	0.011(5)
C56	0.112(7)	0.043(3)	0.115(7)	-0.027(4)	-0.046(6)	0.002(4)
C57	0.059(3)	0.078(4)	0.070(4)	-0.034(3)	-0.023(3)	0.031(3)
C58	0.035(3)	0.085(5)	0.127(7)	-0.019(3)	-0.030(4)	-0.003(5)
C59	0.077(5)	0.114(7)	0.074(5)	-0.040(5)	-0.019(4)	0.016(5)
C60	0.099(6)	0.061(4)	0.048(3)	-0.019(4)	-0.014(3)	-0.011(3)
C61	0.098(6)	0.080(5)	0.086(6)	-0.013(5)	-0.051(5)	-0.003(4)
C62	0.083(6)	0.145(10)	0.118(9)	0.003(6)	-0.037(6)	0.065(8)
C63	0.123(8)	0.076(5)	0.088(6)	-0.048(6)	-0.014(6)	-0.005(5)
C64	0.113(7)	0.097(6)	0.116(8)	-0.040(6)	-0.078(7)	0.028(6)
C65	0.088(5)	0.064(4)	0.100(6)	-0.038(4)	-0.054(5)	0.017(4)
C66	0.092(6)	0.088(5)	0.085(5)	-0.050(5)	-0.037(5)	0.028(4)
C67	0.067(4)	0.110(7)	0.139(9)	-0.057(5)	-0.032(5)	0.024(6)
C68	0.103(6)	0.037(3)	0.111(6)	-0.028(3)	-0.036(5)	0.033(3)
C69	0.073(5)	0.080(5)	0.106(6)	-0.032(4)	-0.027(5)	0.041(5)
C70	0.087(7)	0.143(10)	0.091(7)	-0.047(7)	0.004(5)	0.026(7)
C71	0.071(4)	0.081(5)	0.088(5)	-0.031(4)	-0.027(4)	0.033(4)
C72	0.099(6)	0.090(6)	0.128(8)	-0.049(5)	-0.052(6)	0.065(6)
C73	0.083(6)	0.078(5)	0.086(6)	-0.015(4)	-0.022(5)	0.016(4)
C74	0.080(6)	0.167(12)	0.164(12)	-0.062(7)	-0.048(7)	0.101(10)
C75	0.192(13)	0.127(9)	0.055(4)	-0.091(9)	-0.053(6)	0.024(5)
C76	0.108(7)	0.123(7)	0.087(5)	-0.075(6)	-0.051(5)	0.069(6)
C77	0.091(6)	0.113(7)	0.086(5)	-0.060(5)	-0.036(5)	-0.008(5)
C78	0.064(5)	0.275(18)	0.091(6)	-0.091(8)	-0.035(5)	0.034(9)
C79	0.088(5)	0.072(4)	0.098(6)	-0.054(4)	-0.008(4)	-0.002(4)
C80	0.070(4)	0.072(4)	0.101(6)	-0.038(4)	0.004(4)	-0.038(4)
C81	0.101(6)	0.085(6)	0.081(5)	-0.034(5)	-0.026(5)	-0.006(4)
C82	0.102(7)	0.060(4)	0.108(7)	-0.012(4)	-0.038(6)	-0.017(4)
C83	0.098(6)	0.067(5)	0.107(7)	-0.002(4)	-0.042(6)	-0.019(5)
C84	0.136(10)	0.142(11)	0.101(8)	-0.041(8)	-0.072(8)	0.001(7)
C85	0.074(5)	0.105(6)	0.061(4)	-0.038(4)	-0.027(3)	0.004(4)
C86	0.128(8)	0.110(7)	0.091(6)	-0.043(6)	-0.076(6)	0.027(5)
C87	0.103(7)	0.126(8)	0.129(8)	-0.059(6)	-0.080(7)	0.020(7)
C88	0.089(6)	0.110(7)	0.068(4)	-0.050(5)	-0.023(4)	-0.015(4)
S1	0.0619(9)	0.0565(8)	0.0787(10)	-0.0267(7)	-0.0284(8)	0.0092(7)
S2	0.0421(6)	0.0629(8)	0.0847(10)	-0.0264(6)	-0.0252(7)	0.0121(7)
S3	0.0748(10)	0.0755(10)	0.0875(12)	-0.0397(9)	-0.0497(10)	0.0269(9)
S4	0.0612(8)	0.0646(9)	0.0834(11)	-0.0334(7)	-0.0357(8)	0.0131(8)
S5	0.0627(9)	0.0718(10)	0.0813(11)	-0.0357(8)	-0.0377(8)	0.0109(8)
S7	0.0716(10)	0.0704(10)	0.0739(10)	-0.0401(8)	-0.0306(8)	0.0037(8)
S8	0.0713(10)	0.0588(8)	0.0732(10)	-0.0296(8)	-0.0300(8)	0.0043(7)
S9	0.0600(8)	0.0647(8)	0.0670(9)	-0.0325(7)	-0.0295(7)	0.0099(7)
S10	0.0695(10)	0.0716(10)	0.0922(12)	-0.0396(9)	-0.0390(9)	0.0286(9)
S11	0.0504(7)	0.0659(9)	0.0715(9)	-0.0267(7)	-0.0234(7)	0.0087(7)
S12	0.0818(11)	0.0857(12)	0.0731(10)	-0.0519(10)	-0.0359(9)	0.0094(9)
S13	0.0830(11)	0.0718(10)	0.0607(9)	-0.0471(9)	-0.0200(8)	0.0164(7)
S14	0.0729(10)	0.0597(9)	0.0957(13)	-0.0365(8)	-0.0406(10)	0.0149(8)
S15	0.0600(8)	0.0635(8)	0.0652(8)	-0.0321(7)	-0.0274(7)	0.0093(7)
S16	0.0583(8)	0.0633(8)	0.0622(8)	-0.0312(7)	-0.0266(7)	0.0084(6)
S17	0.0598(8)	0.0625(8)	0.0681(9)	-0.0331(7)	-0.0313(7)	0.0136(7)
S18	0.0884(12)	0.0803(11)	0.0718(10)	-0.043(1)	-0.0447(10)	0.0223(9)
S19	0.0610(8)	0.0642(9)	0.0740(9)	-0.0335(7)	-0.0324(7)	0.0159(7)
S20	0.0615(8)	0.0651(8)	0.0659(9)	-0.0341(7)	-0.0289(7)	0.0114(7)
S21	0.0618(8)	0.0654(8)	0.0650(8)	-0.0332(7)	-0.0300(7)	0.0111(7)
S22	0.0588(8)	0.0651(8)	0.0662(8)	-0.0327(7)	-0.0284(7)	0.0118(7)