

Supporting Information

For

A new approach for the step by step control of magnetic nanostructures functionalization

P. Riani^{1,2}, M.A. Lucchini^{1*}, S. Thea¹, M. Alloisio¹, G. Bertoni³ and F. Canepa^{1,4}

¹ Department of Chemistry and Industrial Chemistry, University of Genoa, Via Dodecaneso 31, 16146 Genoa, ITALY

² INSTM - UDR Genoa, Via Dodecaneso 31, 16146 Genoa ITALY

³ IMEM-CNR, Parco Area delle Scienze 37/A, 43124 Parma, ITALY

⁴ SPIN-CNR, Corso Perrone 24, 16152 Genoa, ITALY

E-mail: mattia.lucchini@unige.it

Contents

Figure S1. ESI-FT HRMS of Fluo1

Figure S2. ESI-FT HRMS of Fluo2

Figure S3. ¹H-NMR Spectrum of Fluo1 (a) and expanded (b,c).

Figure S4. ¹³C-NMR spectrum of Fluo1 (a) and expanded (b,c).

Figure S5. ¹H-NMR Spectrum of Fluo2

Figure S6. ¹H-NMR Spectrum of Fluo2 (Expanded)

Figure S7. ¹³C-NMR Spectrum of Fluo2 (a) and expanded (b,c).

Figure S8. gHSQC Spectrum of Fluo2

Figure S9. gHSQC Spectrum of Fluo2 (Expanded)

Figure S10. gHSQC Spectrum of Fluo2 (Expanded)

Figure S11. Spectra evolution with concentration of Fluo1 in solutions.

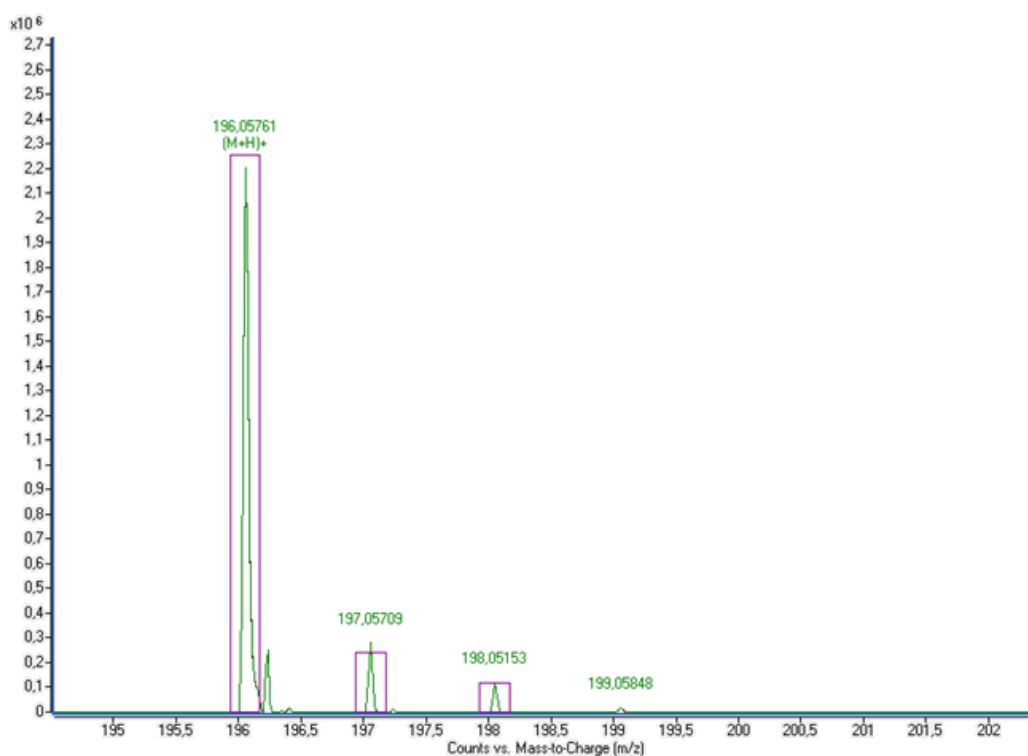


Figure S1. ESI-FT HRMS of Fluo1

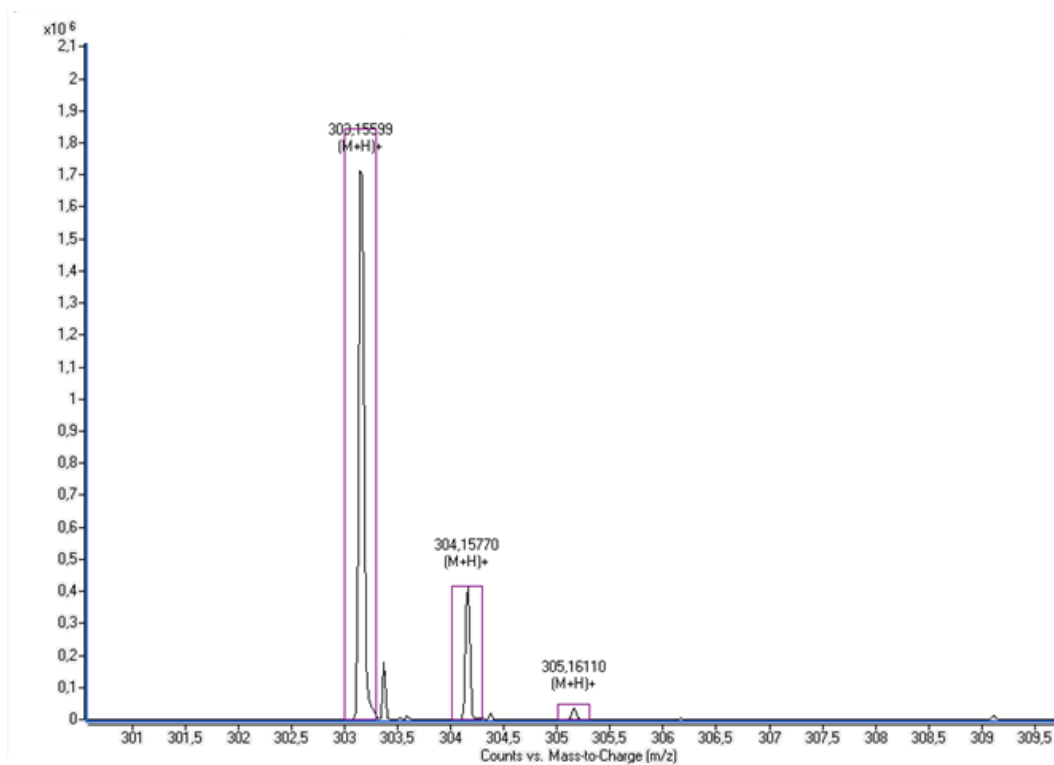
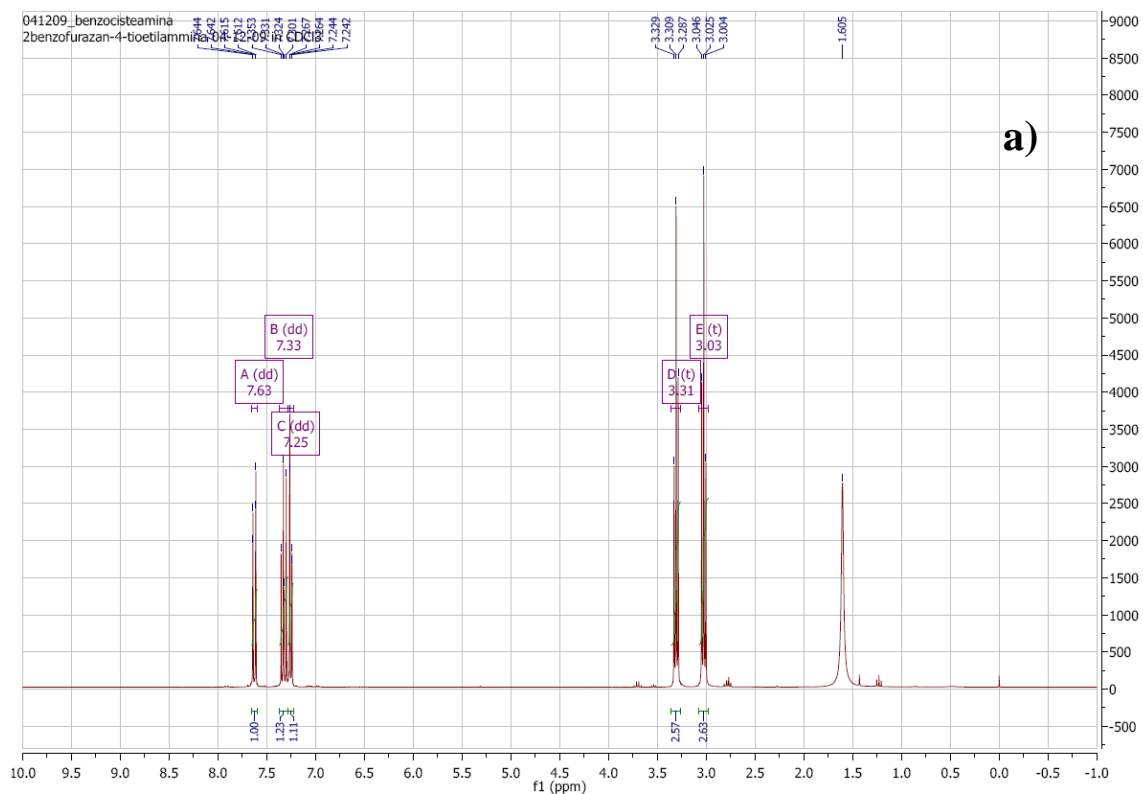
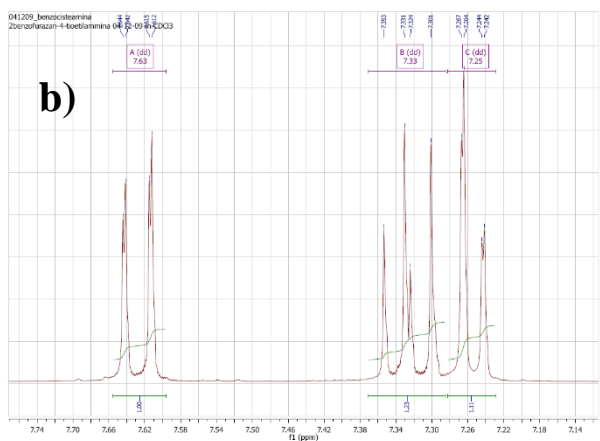


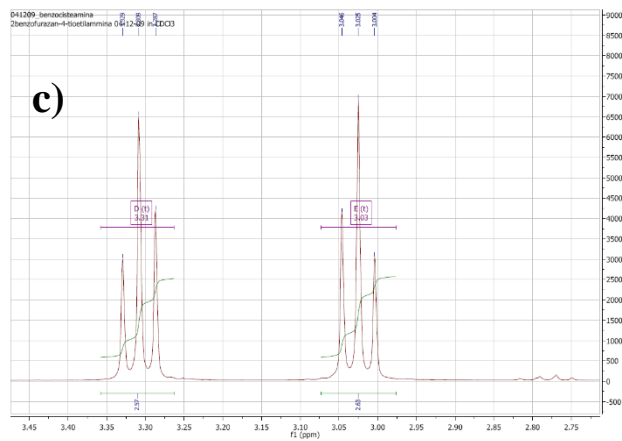
Figure S2. ESI-FT HRMS of Fluo2



a)



b)



c)

Figure S3. $^1\text{H-NMR}$ Spectrum of Fluo1 (a) and expanded (b,c). $^1\text{H-NMR}$: (300 MHz, CDCl_3) δ 7.63 (dd, $J=8.8, 0.8$ Hz, 1H), 7.33 (dd, $J=8.8, 6.9$ Hz, 1H), 7.25 (dd, $J=6.8, 0.8$ Hz, 1H), 3.31 (t, $J=6.3$ Hz, 2H) 3.03 (t, $J=6.4$ Hz, 2H).

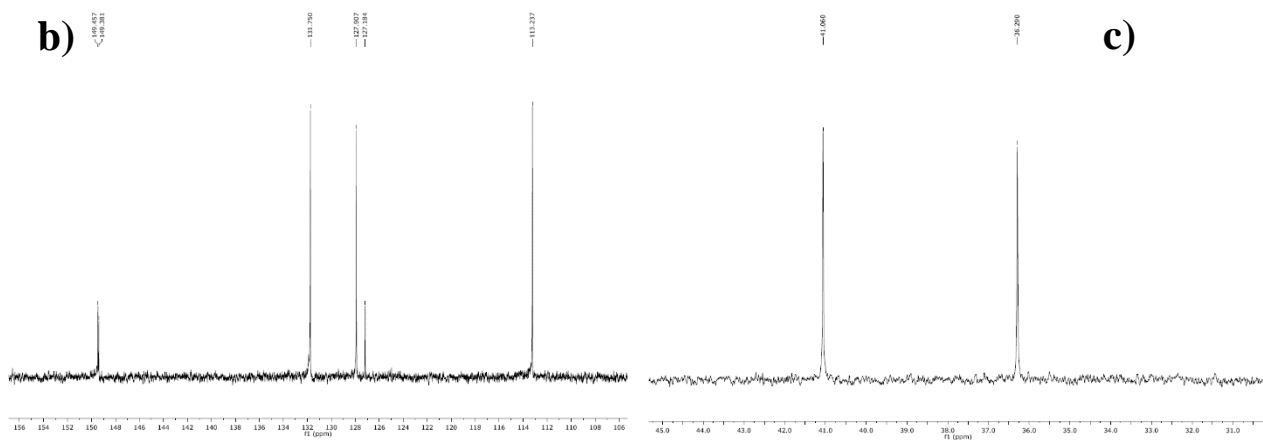
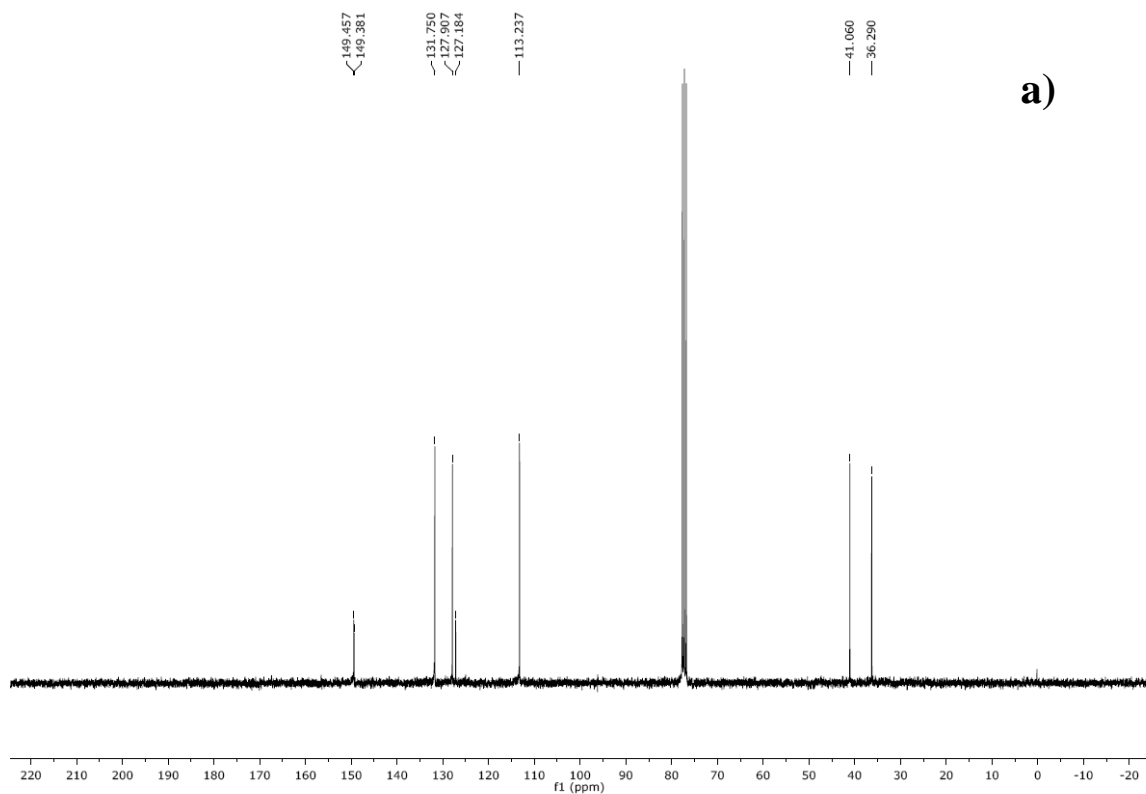


Figure S4. ^{13}C -NMR spectrum of Fluol (a) and expanded (b,c). ^{13}C -NMR: (75 MHz, CDCl_3) δ 149.46, 149.38, 131.75, 127.91, 127.18, 113.24, 41.06, 36.29.

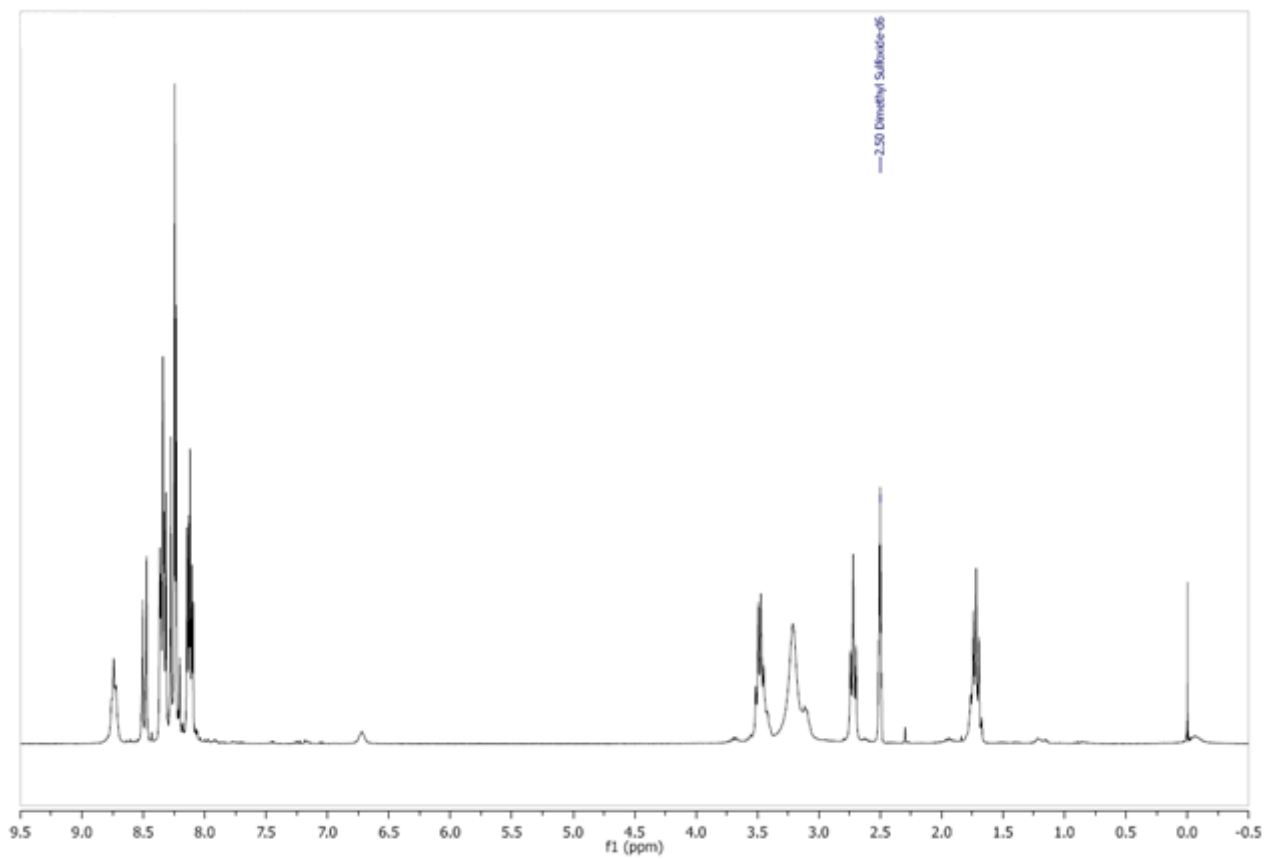


Figure S5. ^1H -NMR Spectrum of Fluo2.

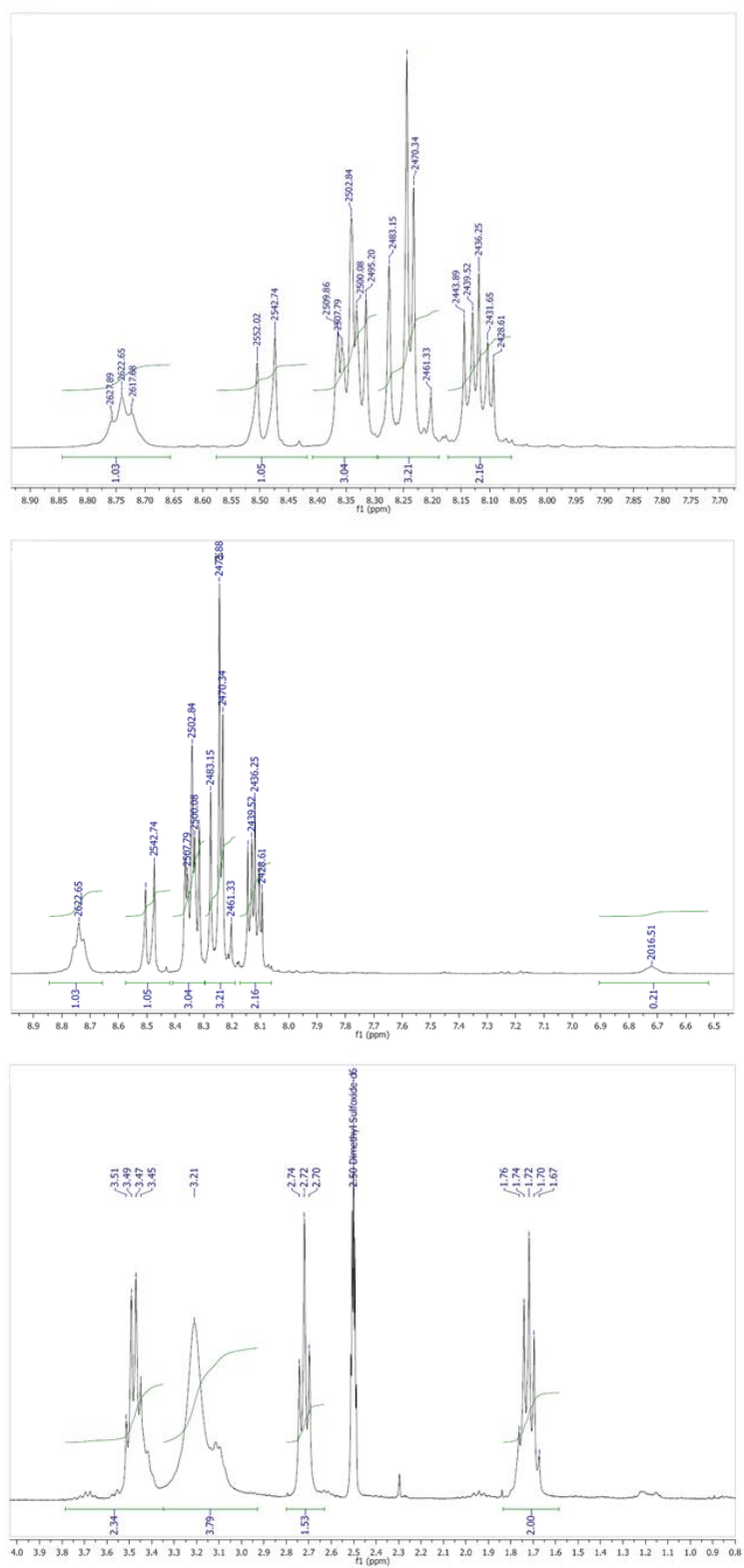


Figure S6. ¹H-NMR Spectrum of Fluo2 (Expanded)

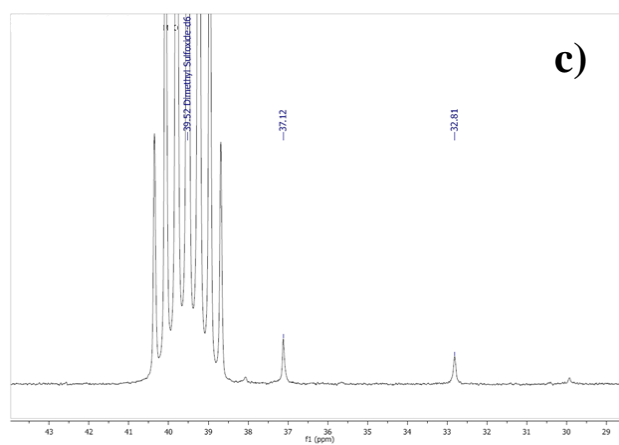
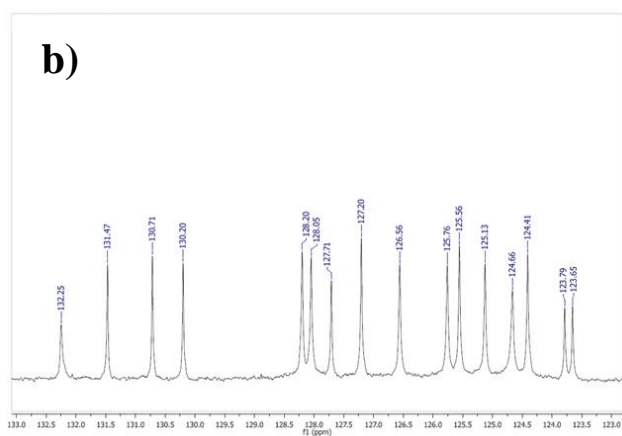
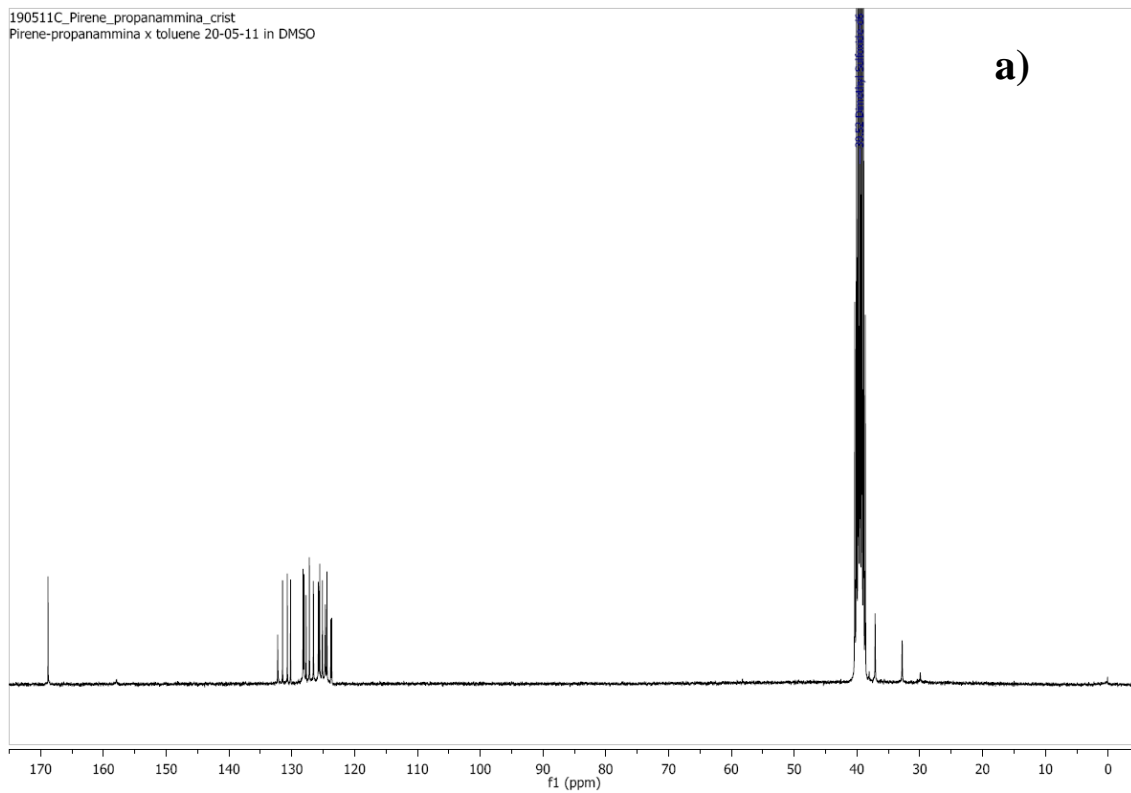


Figure S7. ^{13}C -NMR Spectrum of Fluo2 (a) and expanded (b,c).

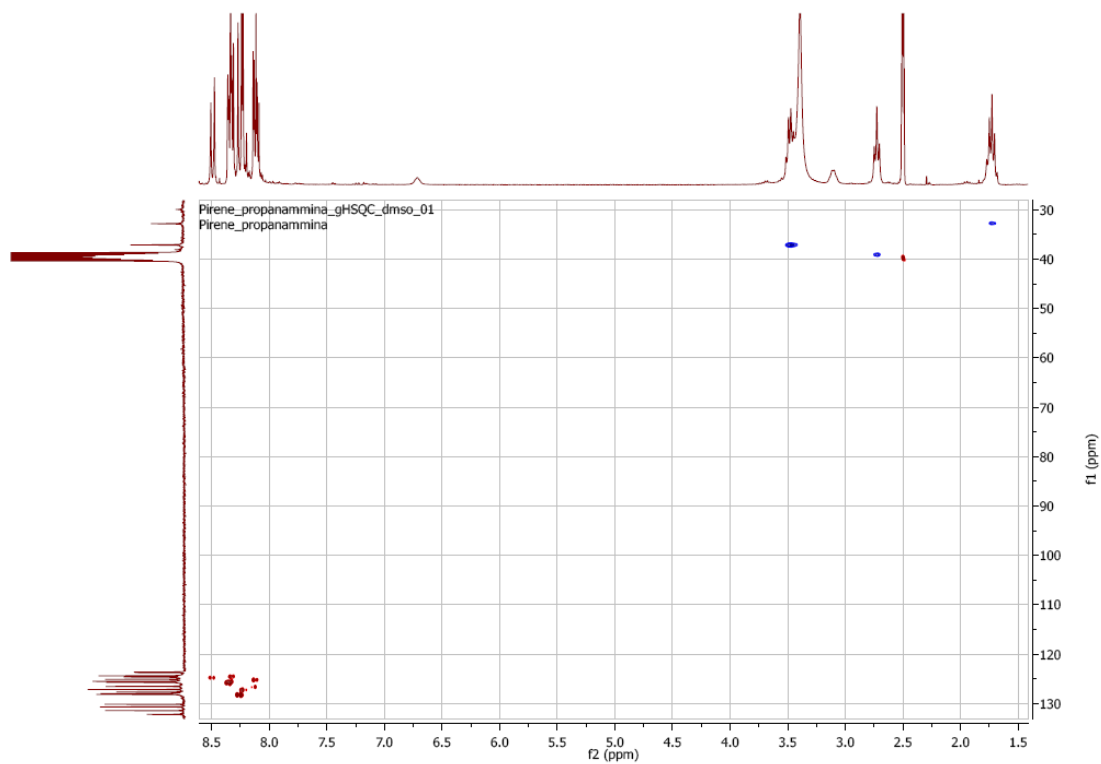


Figure S8. gHSQC Spectrum of Fluo2

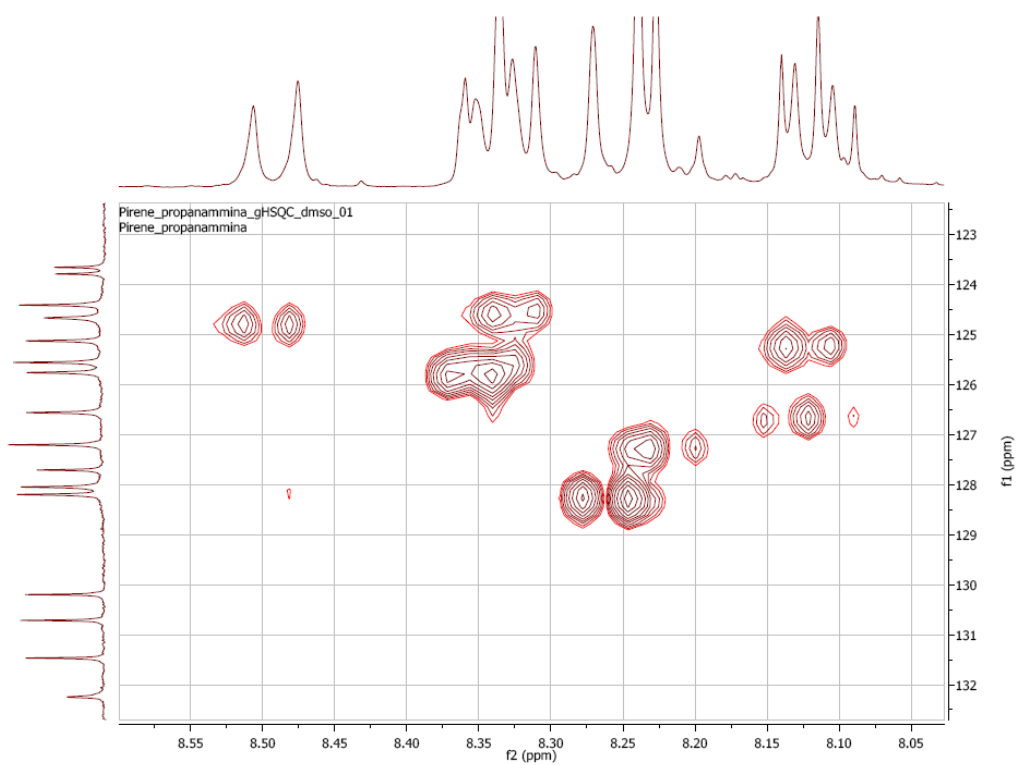


Figure S9. gHSQC Spectrum of Fluo2 (Expanded)

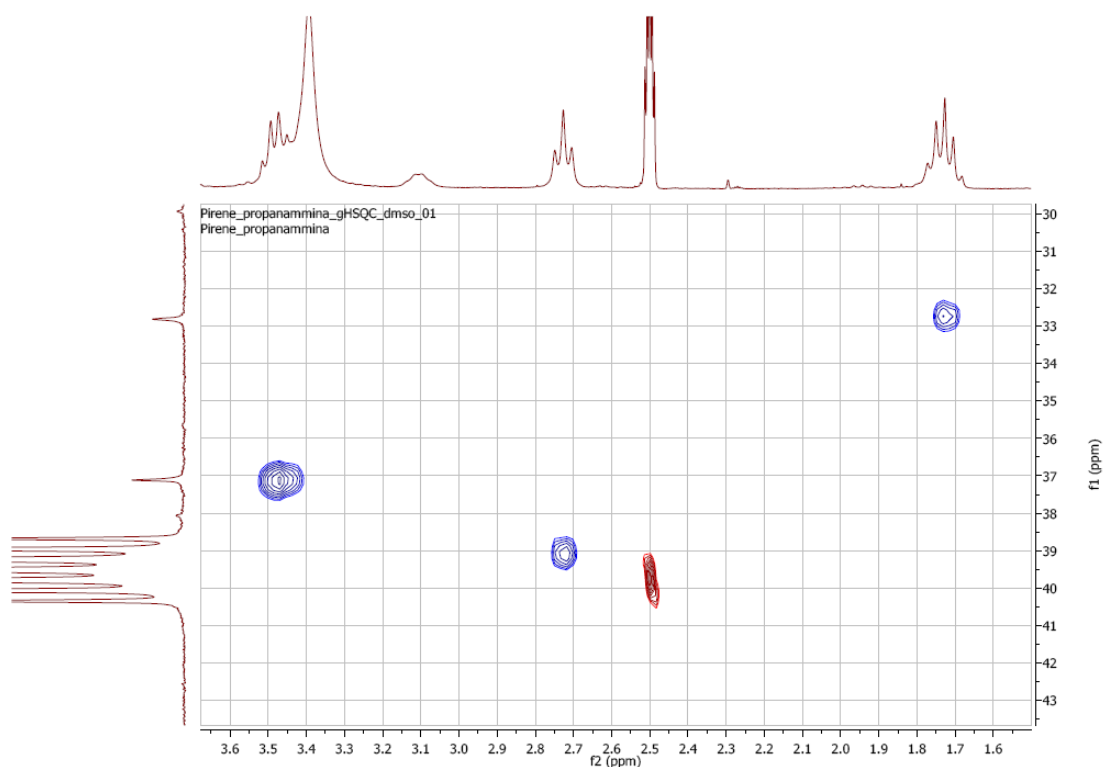


Figure S10. gHSQC Spectrum of Fluo2 (Expanded)

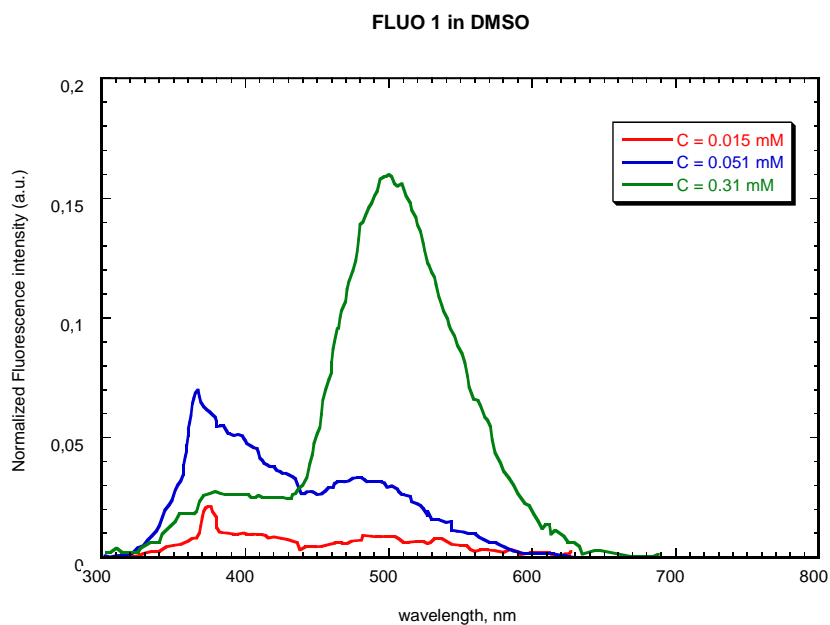


Figure S11. Spectra evolution with concentration of Fluo1 in solutions. Experimental conditions: room temperature, wavelength excitation = 334 nm, quartz cuvette 1 cm path length, fluorescence intensity normalized by a standard of Rhodamine B in PMMA