

Figure S-1. The monthly average temperatures (A), total irradiances (average of 20 years) (B), monthly average relative humidity (C) and monthly rainfall (D) of May and June in 2012 in Zhengzhou, Zunyi and Jiangchuan (Zhang W, Huang W, Yang QY, Zhang SB and Hu H. 2013. Effect of growth temperature on the electron flow for photorespiration in leaves of tobacco grown in the field. *Physiologia Plantarum* 149: 141-150)

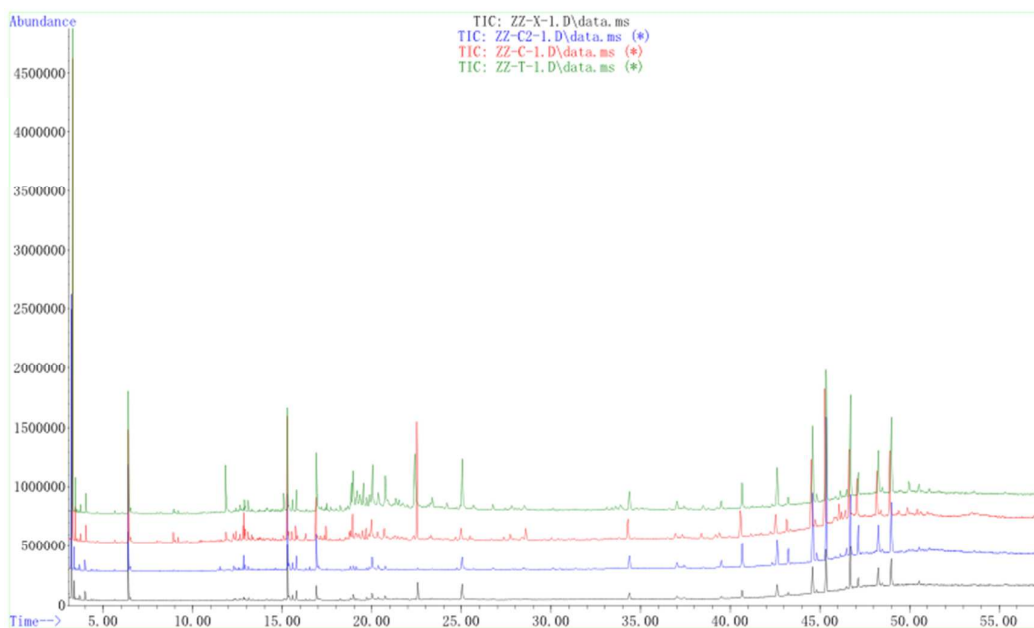


Figure S-2. GC-MS profile of fat-soluble compositions of tobacco samples planted in Zhengzhou harvested at four maturities.

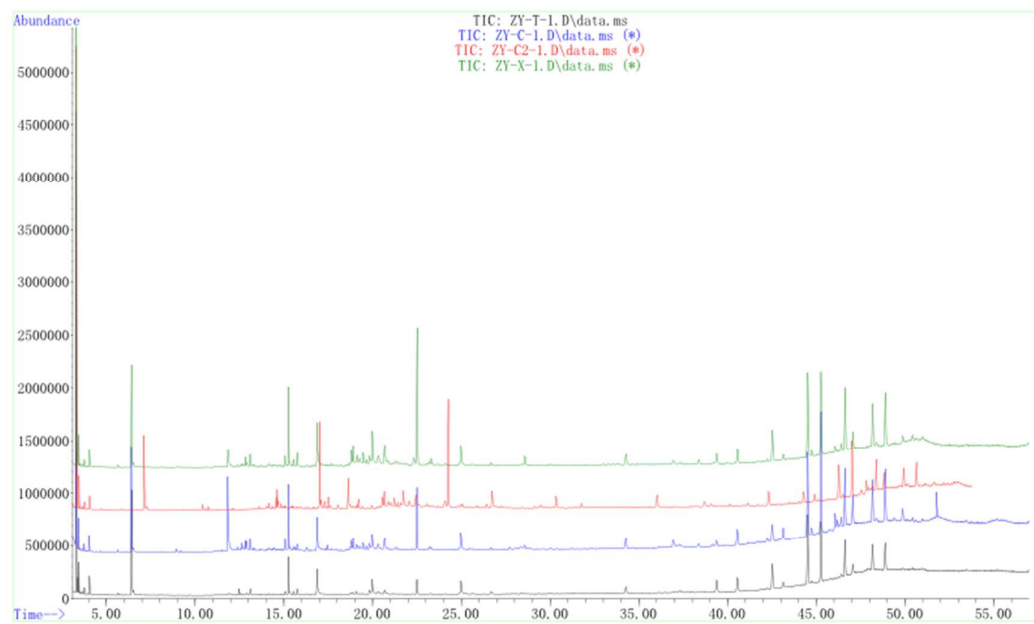


Figure S-3. GC-MS profile of fat-soluble compositions of tobacco samples planted in Zunyi harvested at four maturities.

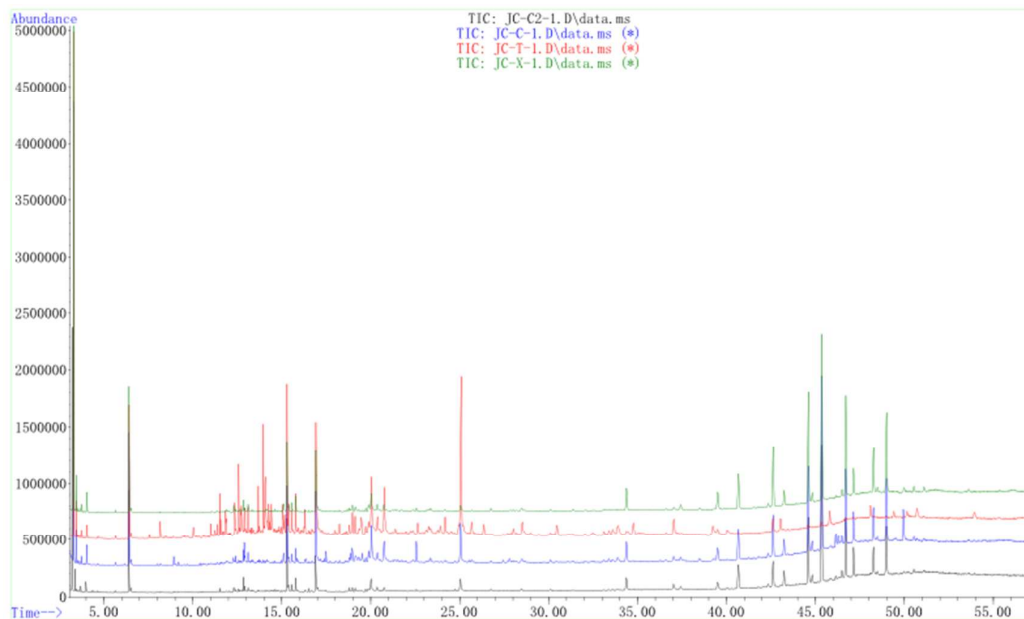


Figure S-4. GC-MS profile of fat-soluble composition of tobacco planted in Jiangchuan harvested at four maturities.

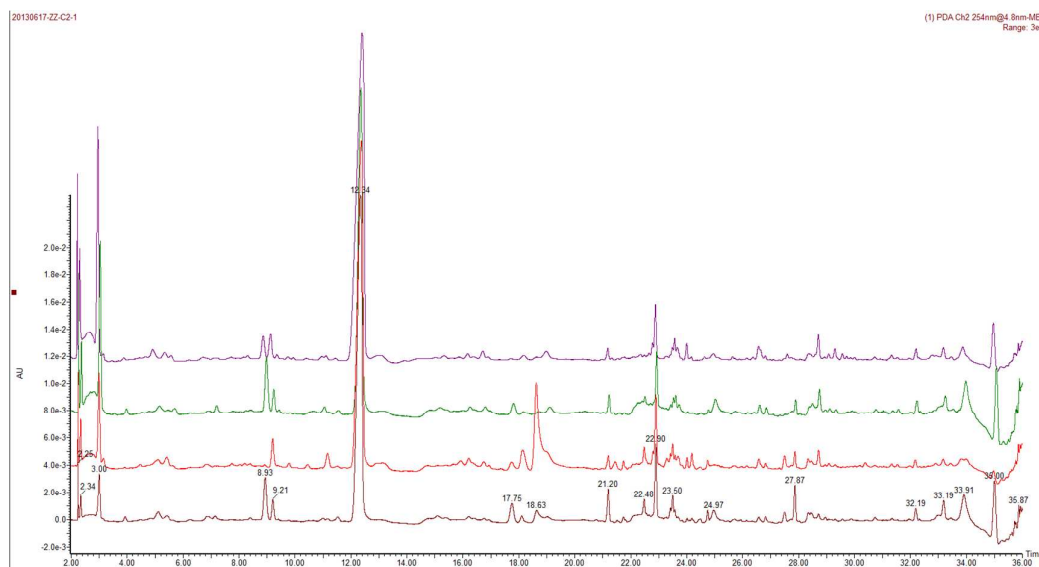


Figure S-5. HPLC-PDA (254 nm) profile of aroma composition of tobacco planted in Zhenzhou harvested at four maturities.

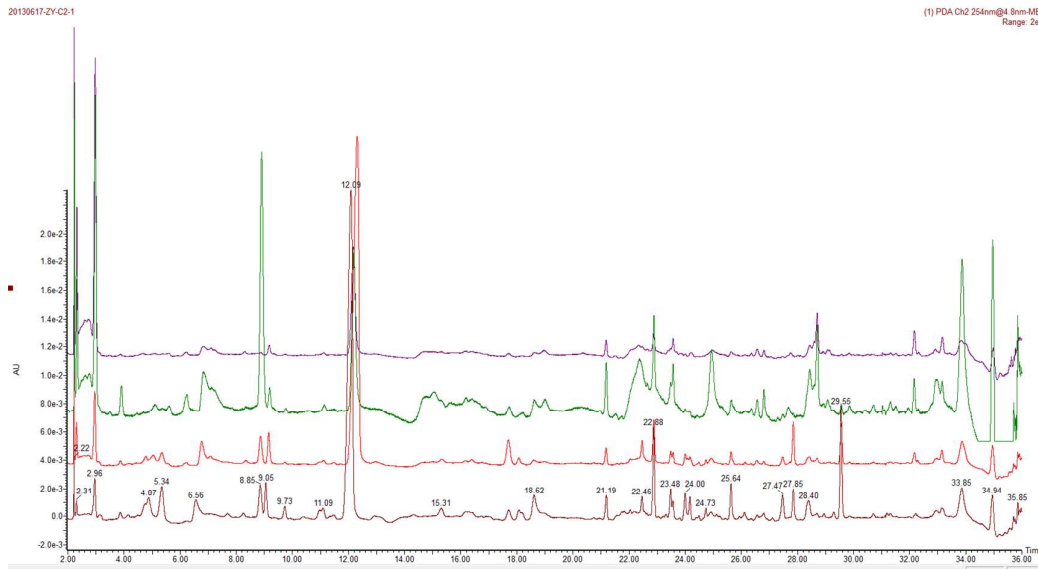


Figure S-6. HPLC-PDA (254 nm) profile of aroma composition of tobacco planted in Zunyi harvested at four maturities.

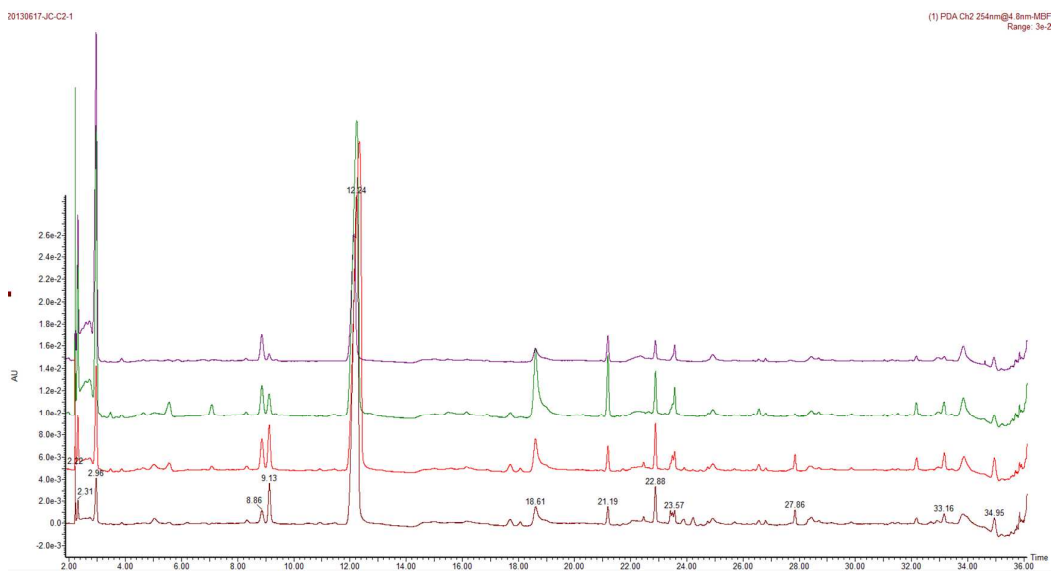


Figure S-7. HPLC-PDA (254 nm) profile of aroma composition of tobacco planted in Jiangchuan harvested at four maturities.