

## Supporting Information

# A 2D DNA Lattice as an Ultra-Sensitive Detector for Beta Radiations

Sreekantha Reddy Dugasani<sup>†,§</sup>, Jang Ah Kim<sup>§,#</sup>, Byeonghoon Kim<sup>†,§</sup>, Pranav Joshirao<sup>⊥</sup>,  
Bramaramba Gnappareddy<sup>†,§</sup>, Chirag Vyas<sup>⊥</sup>, Taesung Kim<sup>§,#\*</sup>, Sung Ha Park<sup>†,§\*</sup>,  
Vijay Manchanda<sup>⊥,\*</sup>

<sup>†</sup>Department of Physics, Sungkyunkwan University, Suwon 440-746, Korea

<sup>§</sup>Sungkyunkwan Advanced Institute of Nanotechnology (SAINT), Sungkyunkwan University,  
Suwon 440-746, Korea

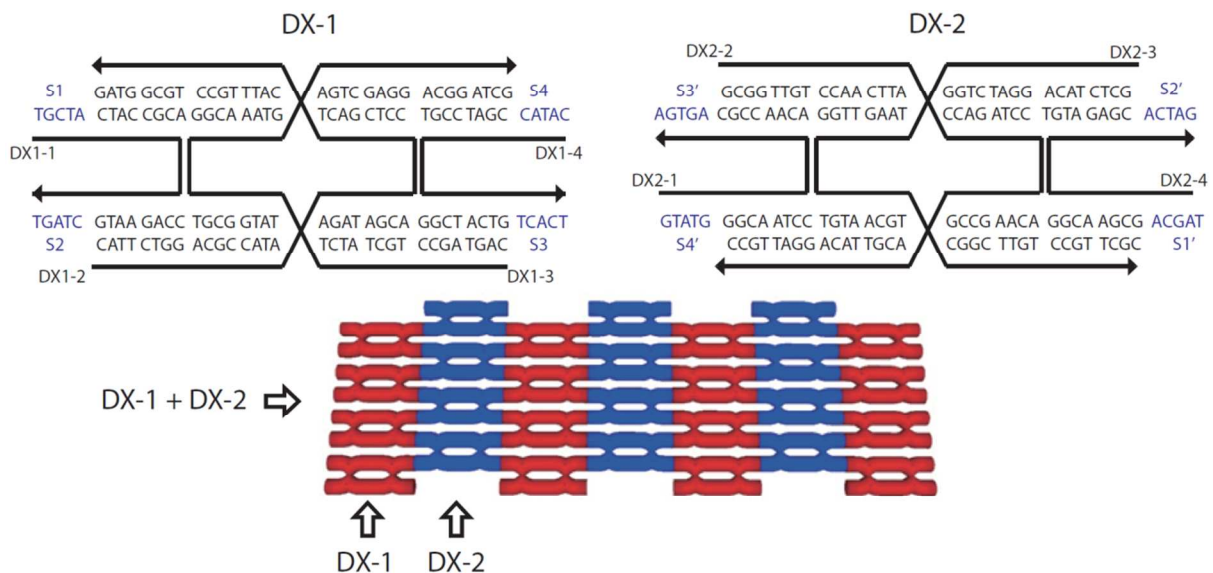
<sup>#</sup>School of Mechanical Engineering, Sungkyunkwan University, Suwon 440-746, Korea

<sup>⊥</sup>Department of Energy Science, Sungkyunkwan University, Suwon 440-746, Korea

<sup>\*</sup>School of Electronics and Electrical Engineering,  
Sungkyunkwan University, Suwon 440-746, Korea

### Supporting Figures and Tables:

**Figure S1.** A schematic diagram of the double-crossover (DX) [DX = (DX-1) + (DX-2)] tiles. Each tile consisted of four strands: DX1-1, DX1-2, DX1-3, and DX1-4 for the (DX-1) tile, and DX2-1, DX2-2, DX2-3, and DX2-4 for the (DX-2). The complementary sticky end pairs are shown as Sn and Sn' in the sequence drawings (blue).



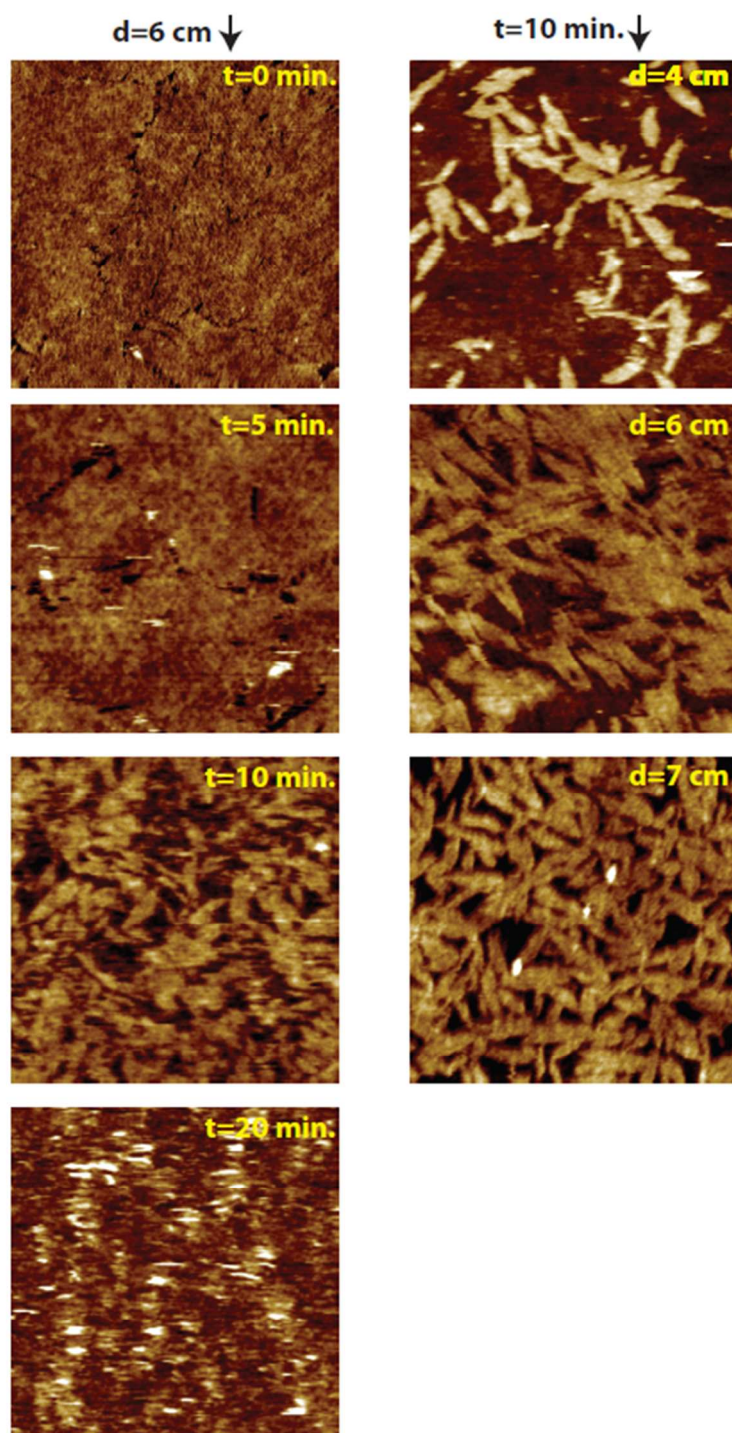
**Table S1.** Sequence pool for the double-crossover (DX) tiles.

Strand name	Total # of NTs	Base Sequences (5' to 3')
DX1-1	26	TGCTA CTACCGCA CCAGAATG CTAGT
DX1-2	48	CATTCTGG ACGCCATA AGATAGCA CCTCGACT CATTG GCC TGC GG TAG
DX1-3	48	CAGTAGCC TGCTATCT TATGGCGT GGCAAATG AGTCGAGG ACGGATCG
DX1-4	26	CATAC CGATCCGT GGCTACTG TCACT
DX2-1	26	GTATG GGCAATCC ACAACCGC AGTGA
DX2-2	48	GCGGTTGT CCAACTTA CCAGATCC ACAAGCCG ACGTTACA GGATTGCC
DX2-3	48	GCTCTACA GGATCTGG TAAGTTGG TGTAACGT CGGCTTGT CCGTTCGC
DX2-4	26	TAGCA GCGAACGG TG TAGAGC ACTAG

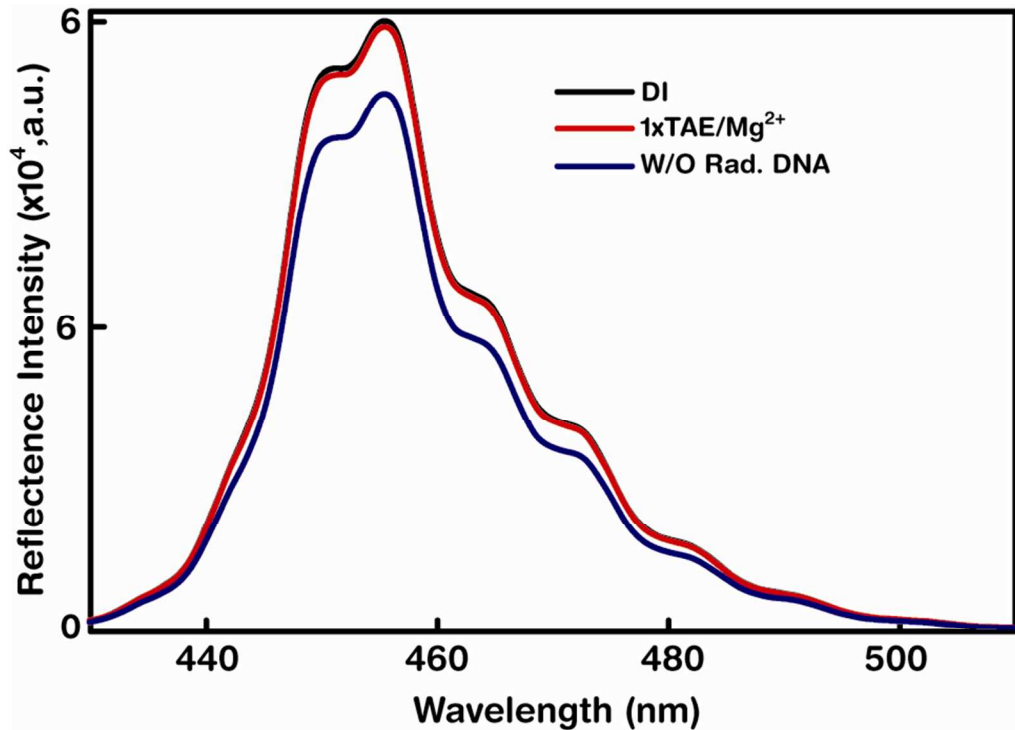
**Table S2.** Sticky-ends for the double-crossover (DX) tiles shown in **Figure S1**.

	5' to 3'	3' to 5'	
S1	TGCTA	ACGAT	S1'
S2	CTAGT	GATCA	S2'
S3	TCACT	AGTGA	S3'
S4	CATAC	GTATG	S4'

**Figure S2.** AFM images of plotting the deformation area curves in **Figure 2(f, g)**.



**Figure S3.** The reflectance intensities of DI water, 1×TAE/Mg<sup>2+</sup> buffer, and DNA lattices on glass without radiation exposure.



### Quantitative description of a DXL (Double-Crossover Lattice)

#### M1. Definition

- DXL structure consists of two repeating tiles, DX-1 and DX-2.
- Each DX-1 and DX-2 tile is made up of four DNA strands.
- A pair of DX-1 and DX-2 tiles is referred to as single DXL unit.

#### M2. Total number of DXL units on the surface

- The size of the substrate is 5 mm × 5 mm.
- The total DNA polycrystalline lattice area = 25 mm<sup>2</sup> = A<sub>tot</sub>
- The occupied size of single DX tile is 5 nm × 12 nm.
- Total number of tiles on the surface is  $\frac{5 \text{ mm} \times 5 \text{ mm}}{5 \text{ nm} \times 12 \text{ nm}} = 42 \times 10^{10}$  tiles.
- Total number of DXL units on the surface is  $21 \times 10^{10}$  units.

#### M3. DNA base pair concentration on given substrate.

- 1 mole =  $6.022 \times 10^{23}$  units.
- 1 unit =  $(1/(6.022 \times 10^{23})) \text{ mol} = 1.661 \times 10^{-24} \text{ mol}$
- Total DXL concentration =  $(21 \times 10^{10} \text{ DXL units}) \times (1.661 \times 10^{-24} \text{ mol/DXL unit}) = 3.488 \times 10^{-13} \text{ mol}$
- 1 unit has 69 base pairs of AT and 79 base pairs of CG.
- The total AT & CG concentration on glass is,
- AT :  $(69 \text{ bp/unit}) \times (3.488 \times 10^{-13} \text{ mol}) = 24.07 \times 10^{-12} \text{ mol}$

- CG :  $(79 \text{ bp/unit}) \times (3.488 \times 10^{-13} \text{ mol}) = 27.56 \times 10^{-12} \text{ mol}$

	Adenine	Thymine	Guanine	Cytosine
M.W of Nucleotide (g)	331.22	322.21	347.22	307.20
M.W of Base Pair (g)	653.43		654.42	

**M4. DNA molecules' weight on glass**

- AT:  $(653.43 \text{ g/mol}) \times (24.07 \times 10^{-12} \text{ mol}) = 15.72 \text{ ng}$
- CG:  $(654.42 \text{ g/mol}) \times (27.56 \times 10^{-12} \text{ mol}) = 18.03 \text{ ng}$
- Total DNA weight: 33.75 ng

**M5. Hydrogen bond energy of AT and CG**

- AT = 21 kJ/mol or  $3.4 \times 10^{-20} \text{ J/AT}$
- CG = 29 kJ/mol or  $4.8 \times 10^{-20} \text{ J/CG}$

**M6. Hydrogen bond energy per unit DXL**

- $(3.4 \times 10^{-20} \text{ J} \times 69) + (4.8 \times 10^{-20} \text{ J} \times 79) = 6.13 \times 10^{-18} \text{ J}$