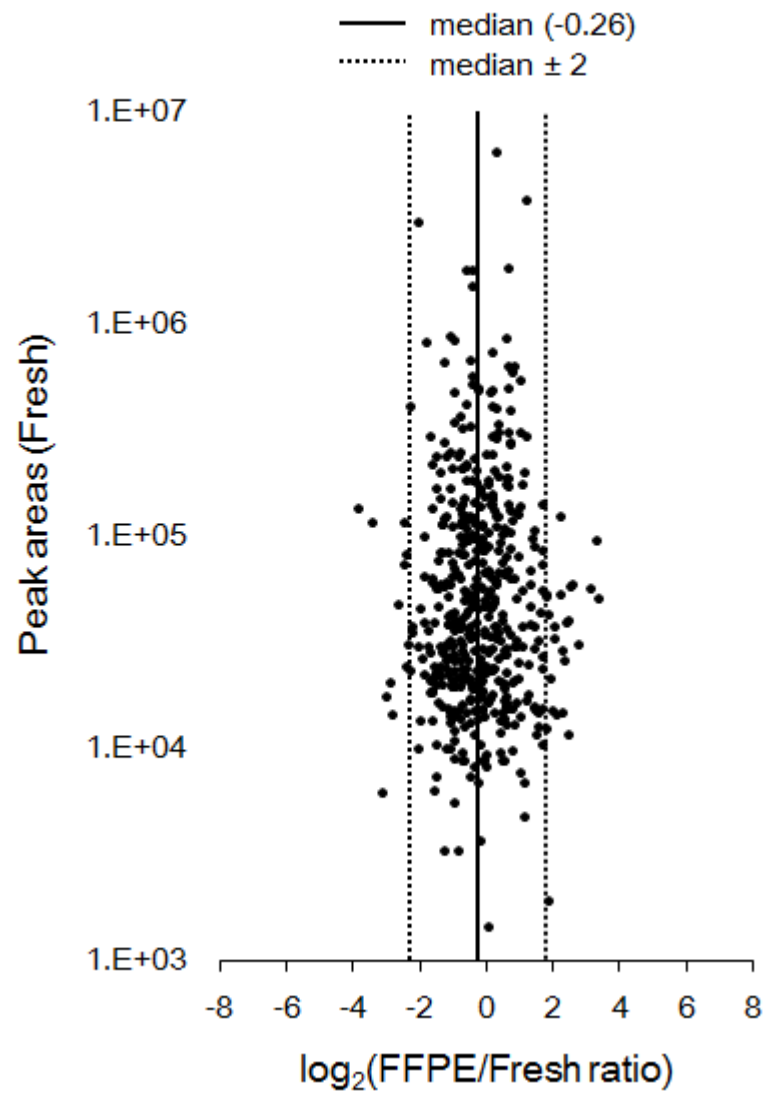
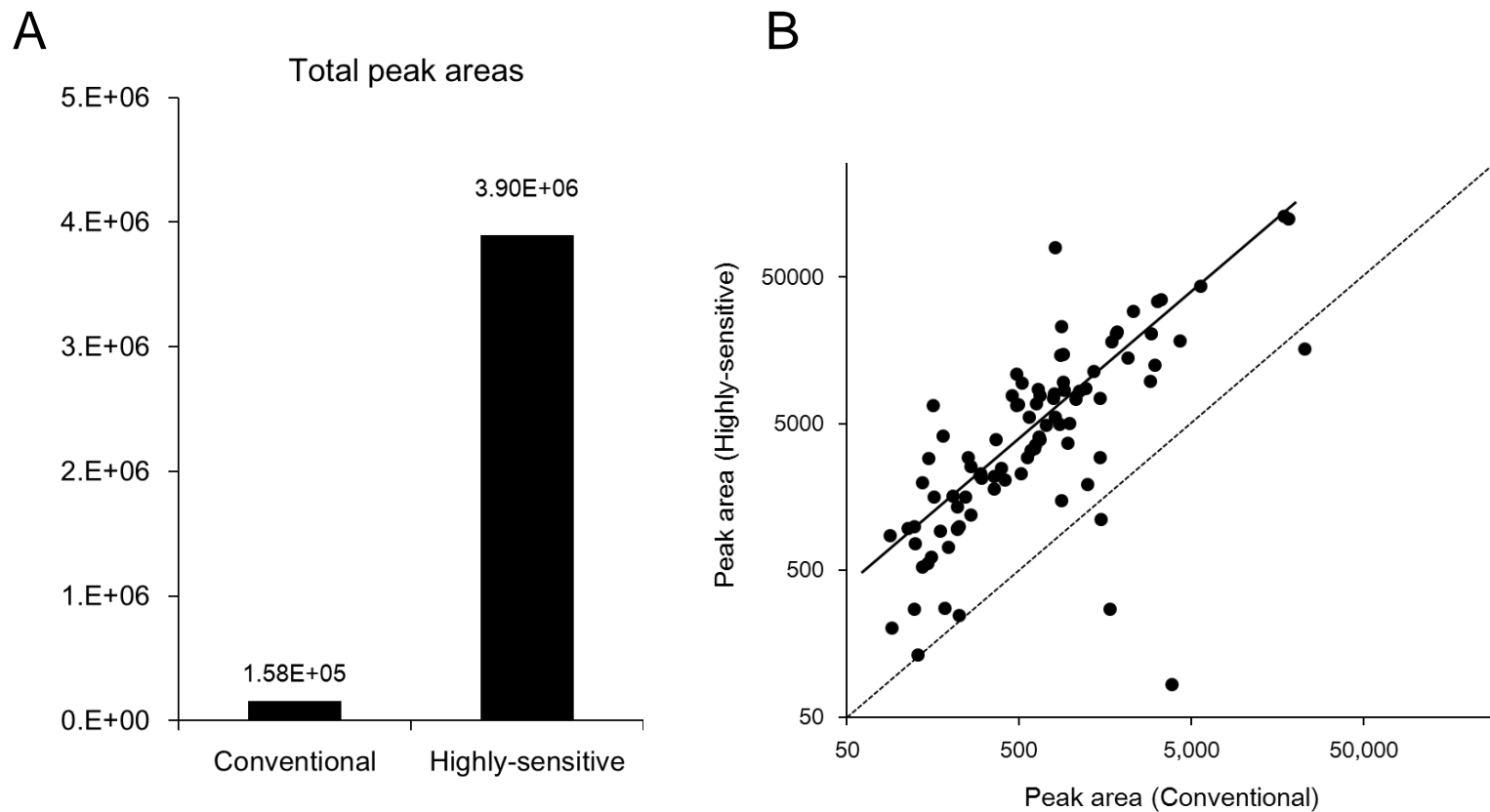


Supplementary Figure S1



Supplementary Figure S2



Supplementary Figure S1. Comparison between highly sensitive and conventional LC-MS systems. (A) Total peak area of phosphopeptides identified in each system. (B) The peak areas of overlapping phosphopeptides in the two systems were plotted. The X-axis and Y-axis indicate peak areas in the conventional and highly sensitive systems, respectively.