

Supporting Information

Coumarins and lignans from *Zanthoxylum schinifolium* and their anticancer activities

Wei Li,[†] Ya Nan Sun,[†] Xi Tao Yan,[†] Seo Young Yang,[†] Hee Kyoung Kang,[‡] and Young Ho Kim^{†,*}

[†] *College of Pharmacy, Chungnam National University, Daejeon 305-764, Korea*

[‡] *School of Medicine and Institute of Medical Science, Jeju National University, Jeju 690-756, Korea*

Contents		Pages
Figure S1.	Inhibitory effect of the isolated compounds against cancer cells line (1)	S3
Figure S2.	Inhibitory effect of the isolated compounds against cancer cells line (2)	S4
Figure S3.	Inhibitory effect of the isolated compounds against cancer cells line (3)	S5
Figure S4.	Inhibitory effect of the isolated compounds against cancer cells line (4)	S6
Figure S5.	Inhibitory effect of the isolated compounds against cancer cells line (5)	S7
Figure S6.	Inhibitory effect of the Mitoxantrone against cancer cells line	S8
Figure S7.	Inhibitory effect of the compounds 10-12 against normal human fibroblast cells	S9
Figure S8.	HR-ESI-MS spectrum of compound 1	S10
Figure S9.	¹ H NMR spectrum of compound 1 (pyridine- <i>d</i> ₅ , 600 MHz)	S11
Figure S10.	¹³ C NMR spectrum of compound 1 (pyridine- <i>d</i> ₅ , 150 MHz)	S12
Figure S11.	COSY spectrum of compound 1	S13
Figure S12.	HMQC spectrum of compound 1	S14
Figure S13.	HMBC spectrum of compound 1	S14
Figure S14.	NOESY spectrum of compound 1	S16
Figure S15.	HR-ESI-MS spectrum of compound 2	S17
Figure S16.	¹ H NMR spectrum of compound 2 (methanol- <i>d</i> ₄ , 600 MHz)	S18
Figure S17.	¹³ C NMR spectrum of compound 2 (methanol- <i>d</i> ₄ , 150 MHz)	S19
Figure S18.	COSY spectrum of compound 2	S20
Figure S19.	HMQC spectrum of compound 2	S21
Figure S20.	HMBC spectrum of compound 2	S22
Figure S21.	NOESY spectrum of compound 2	S23

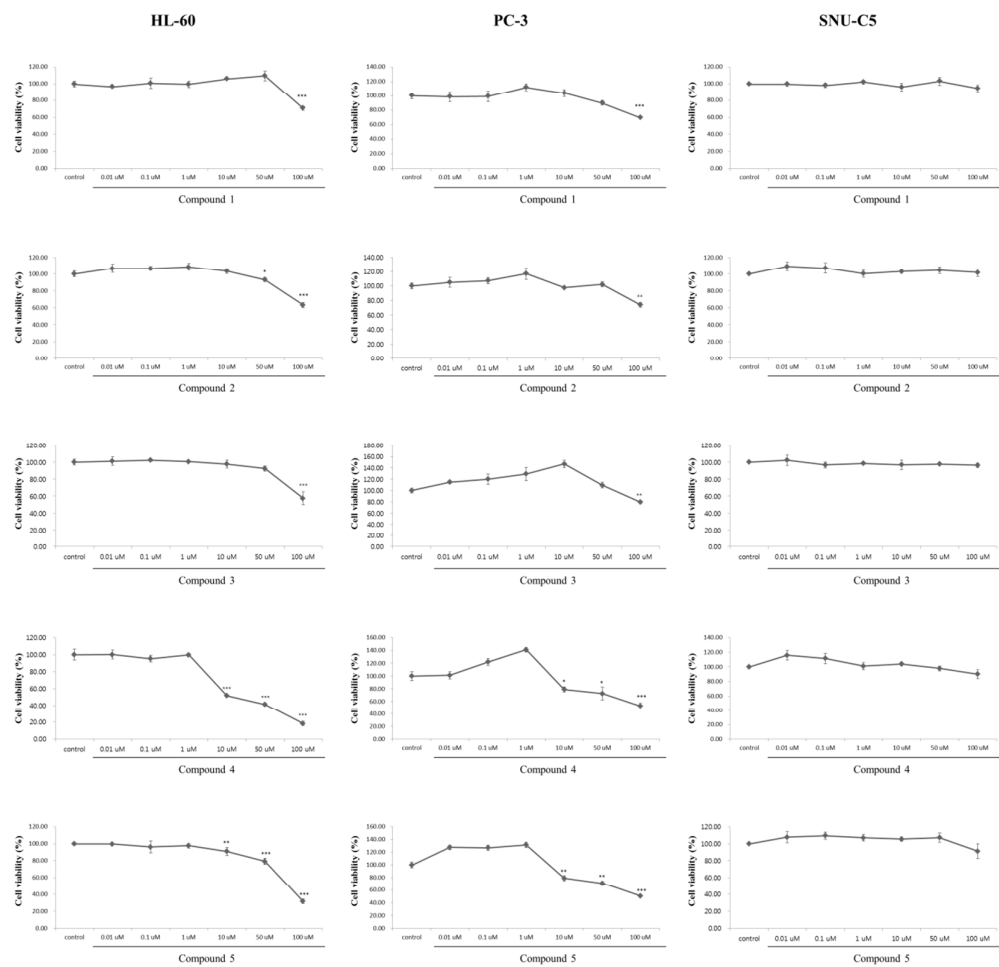


Figure S1. Inhibitory effect of the isolated compounds against cancer cells line (1)

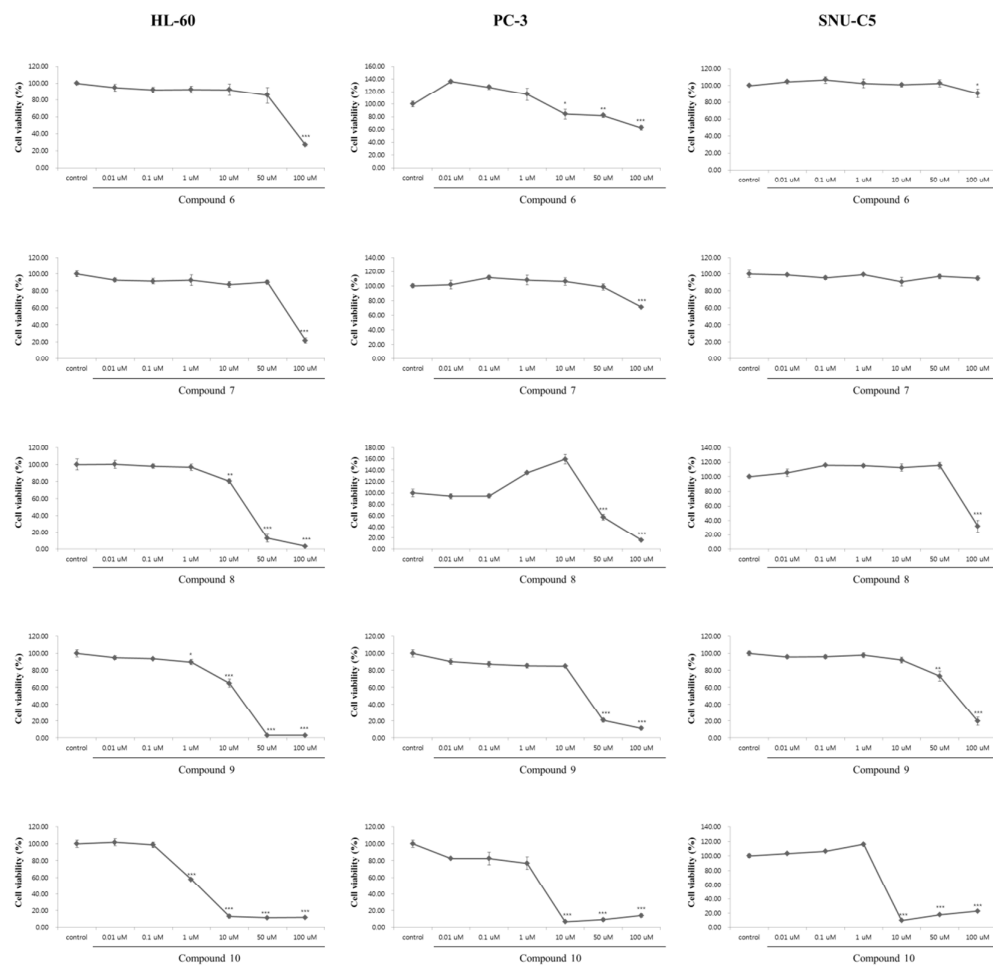


Figure S2. Inhibitory effect of the isolated compounds against cancer cells line (2)

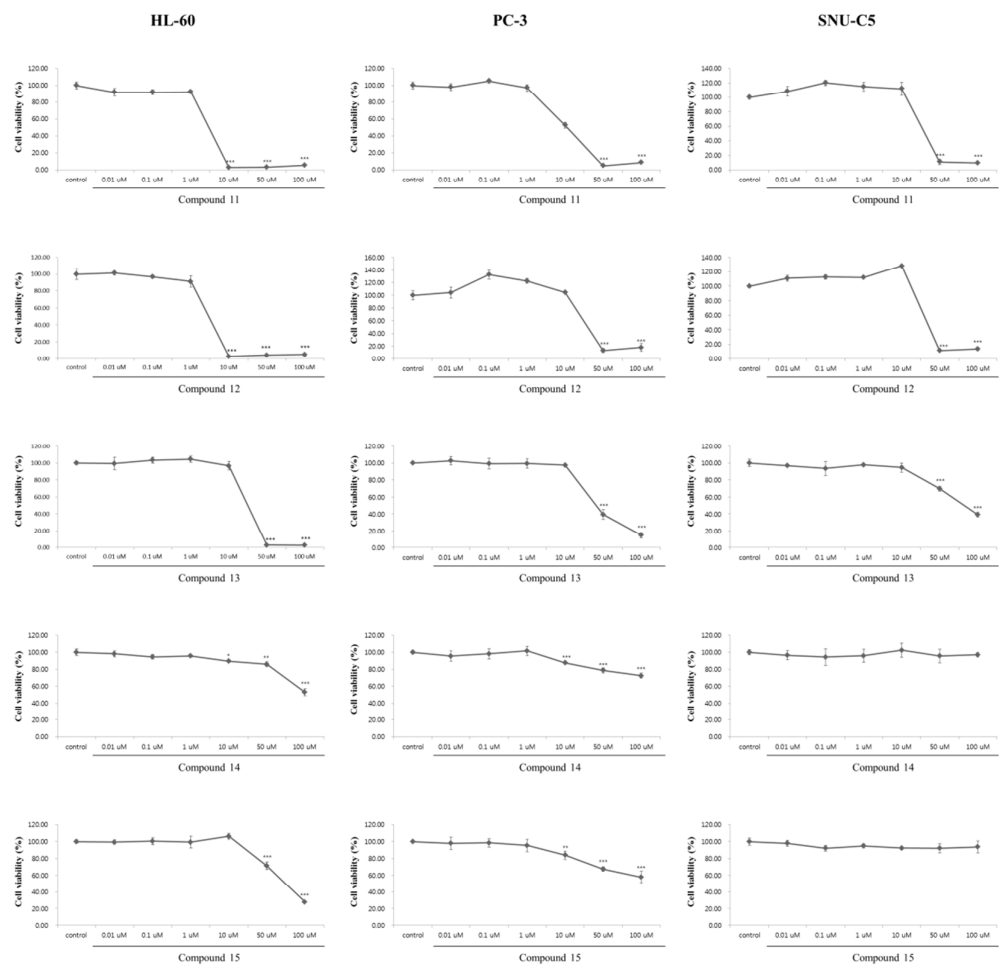


Figure S3. Inhibitory effect of the isolated compounds against cancer cells line (3)

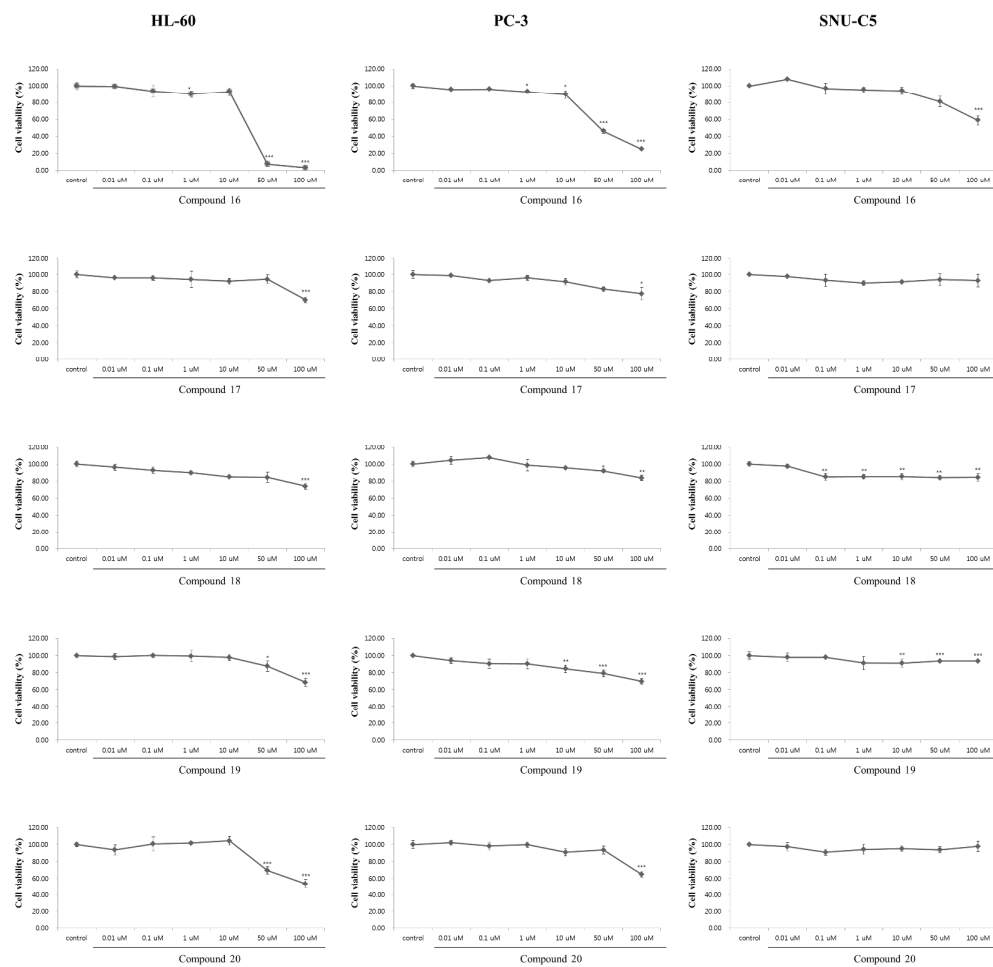


Figure S4. Inhibitory effect of the isolated compounds against cancer cells line (4)

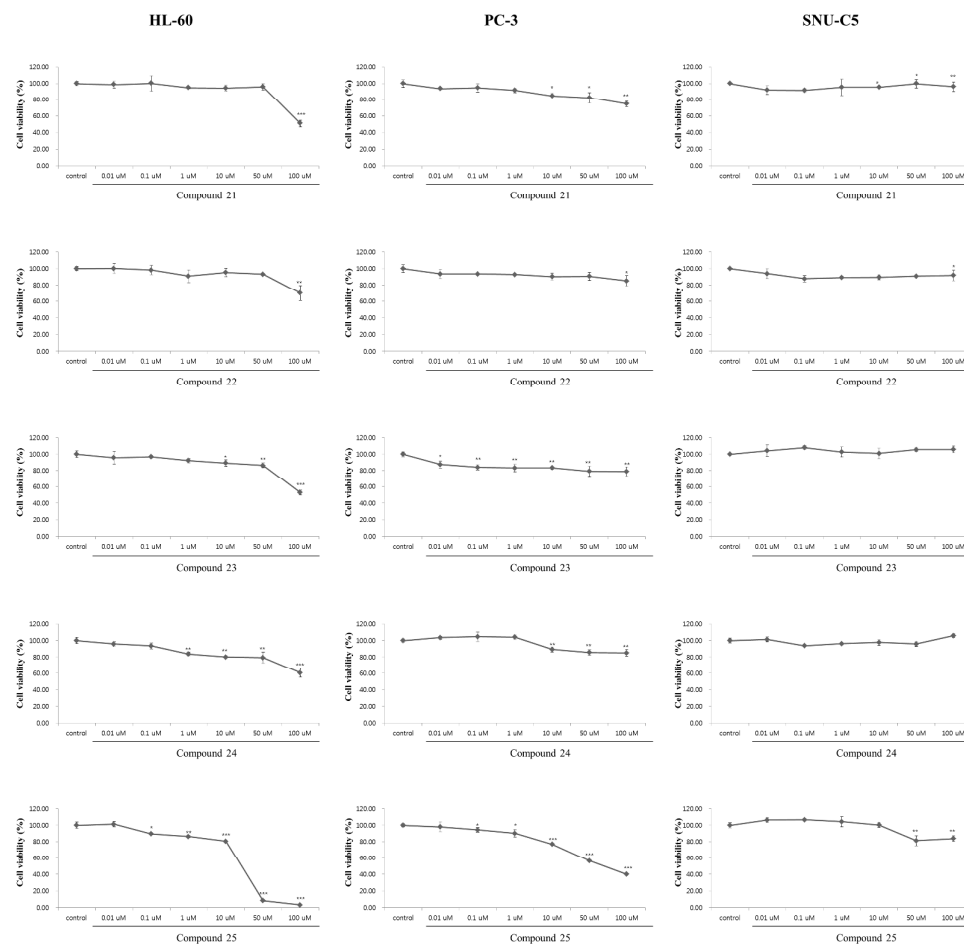


Figure S5. Inhibitory effect of the isolated compounds against cancer cells line (5)

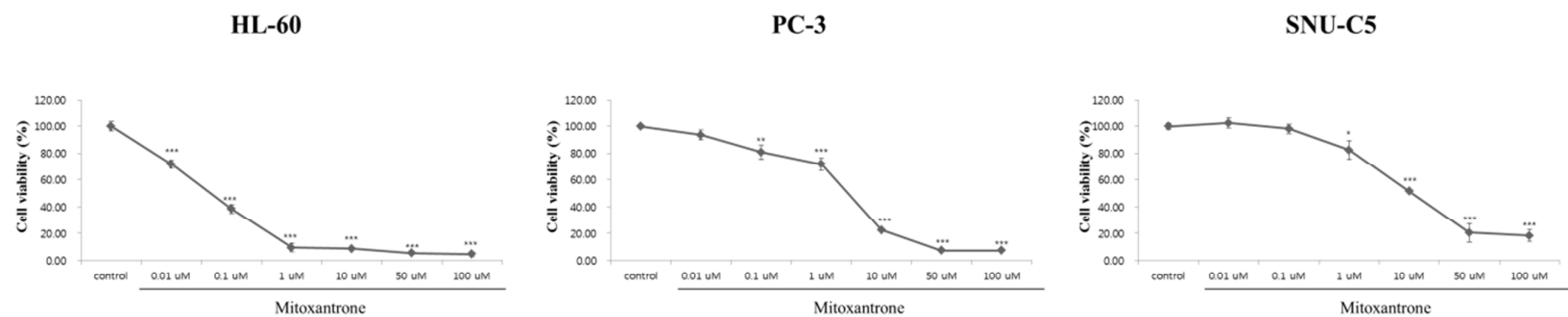


Figure S6. Inhibitory effect of the Mitoxantrone against cancer cells line

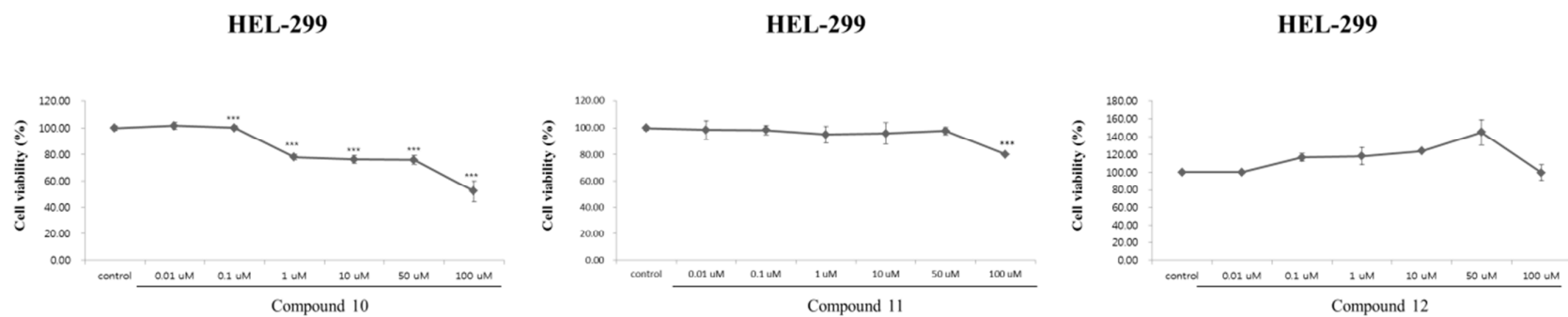


Figure S7. Inhibitory effect of the compounds **10-12** against normal human fibroblast cells

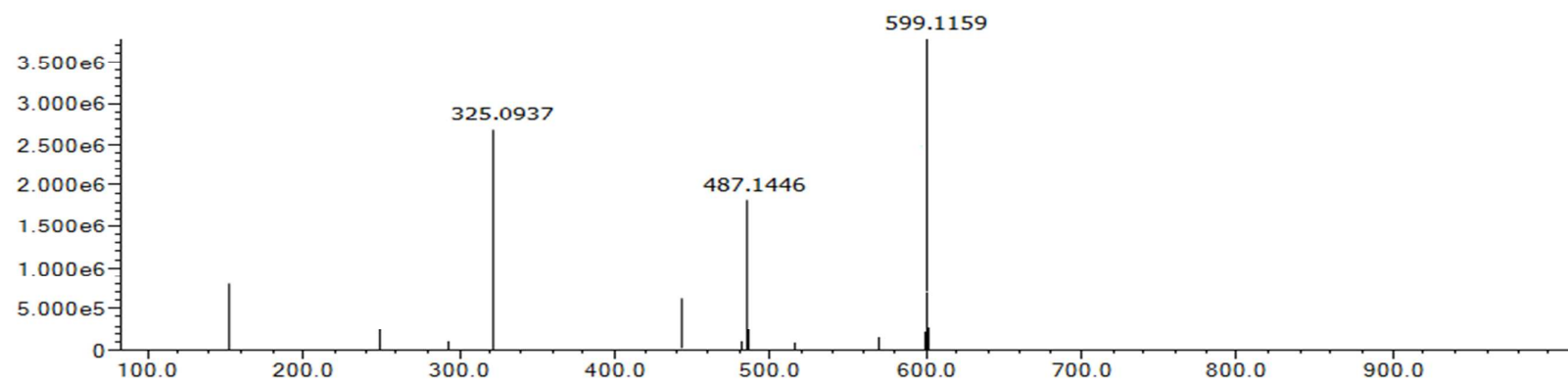


Figure S8. HR-ESI-MS spectrum of compound **1**

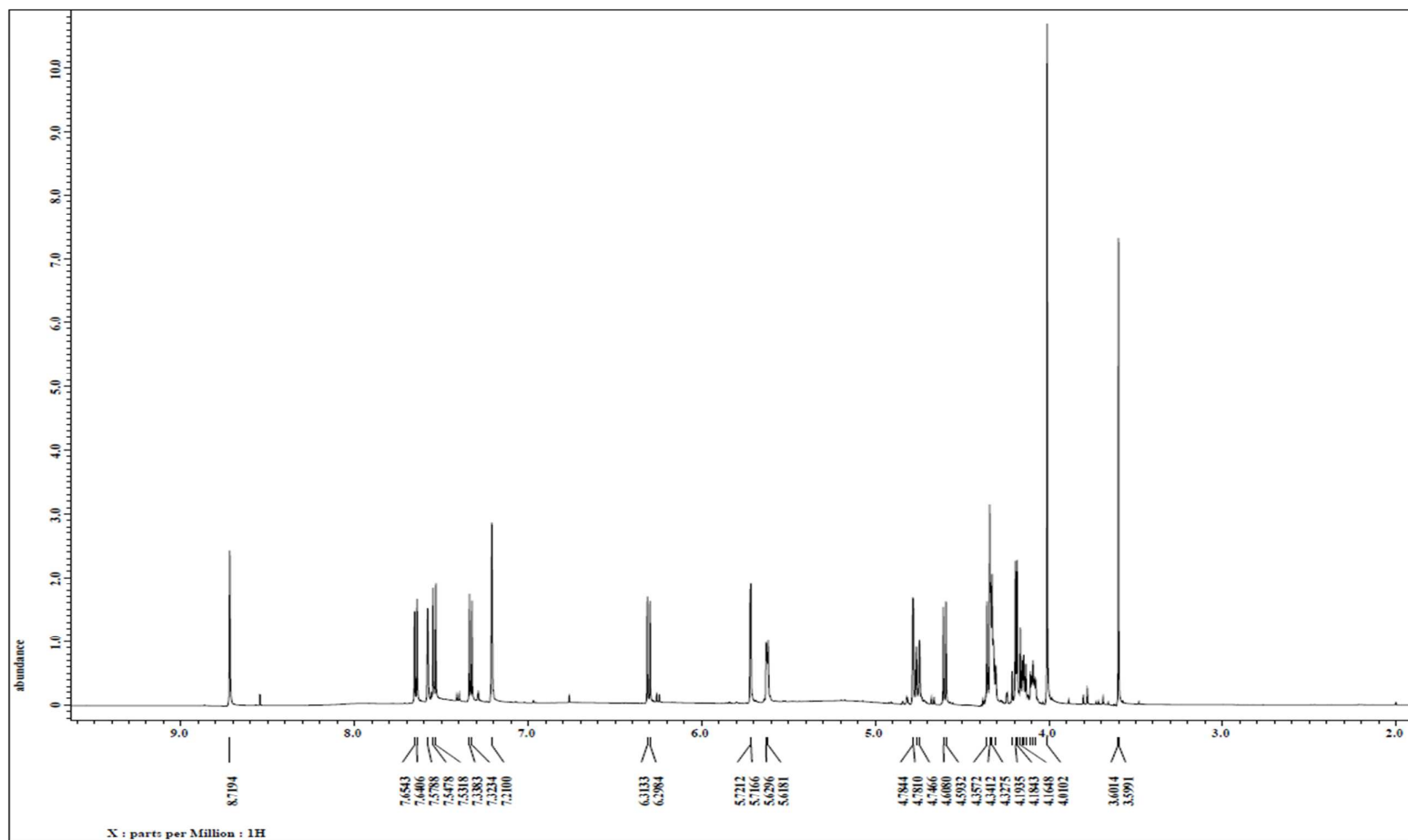


Figure S9. ^1H NMR spectrum of compound **1** (pyridine- d_5 , 600 MHz)

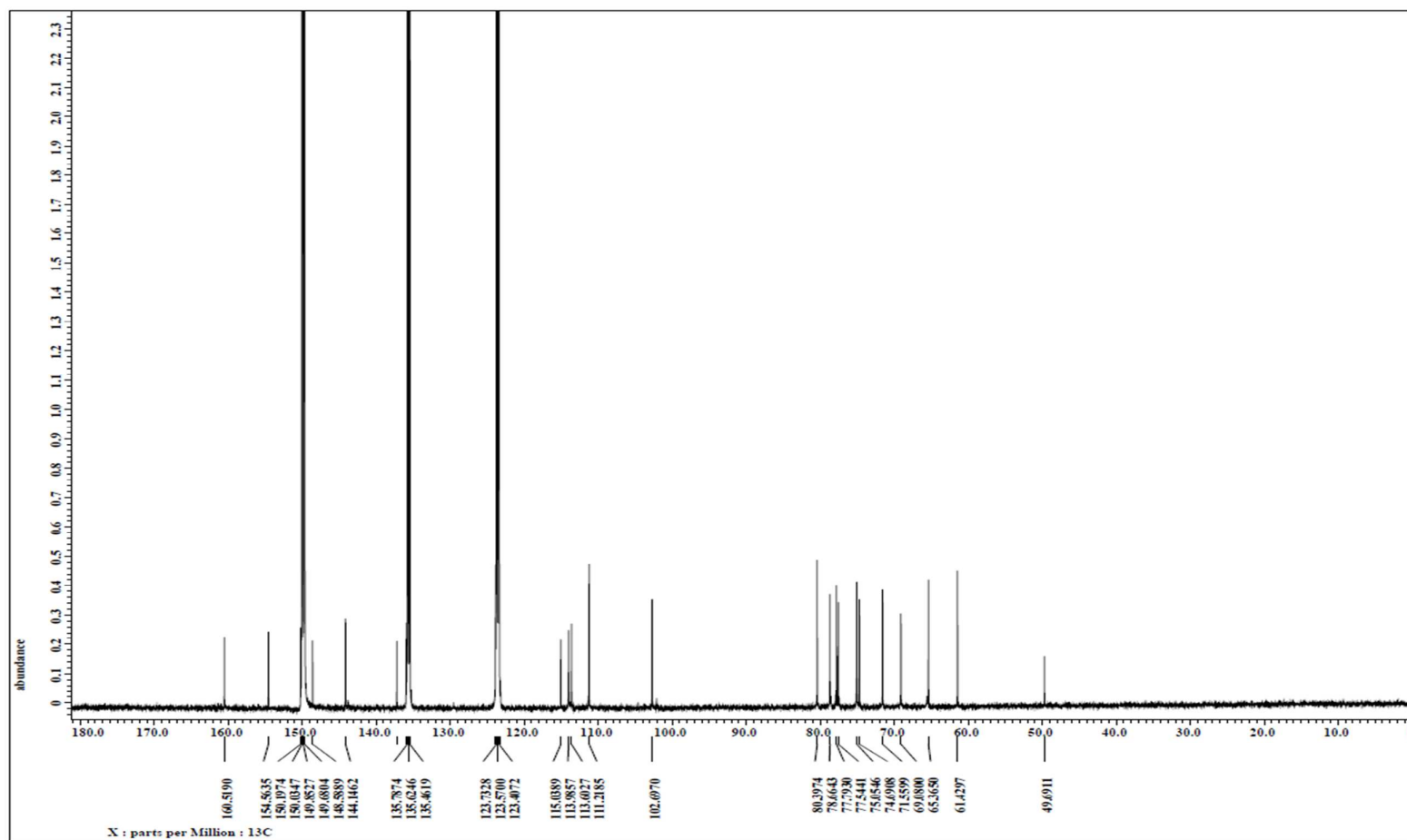


Figure S10. ¹³C NMR spectrum of compound 1 (pyridine-*d*₅, 150 MHz)

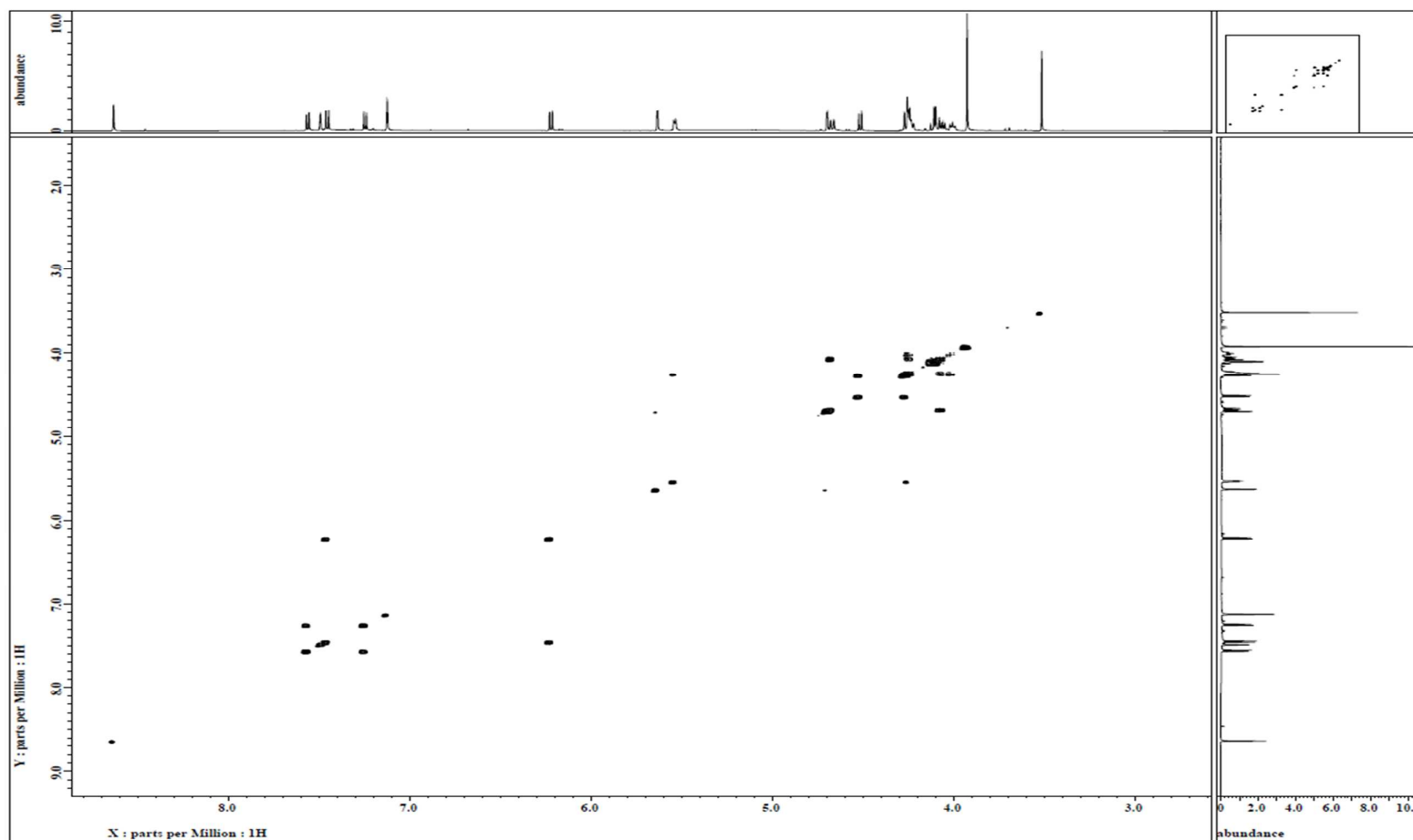


Figure S11. COSY spectrum of compound **1**

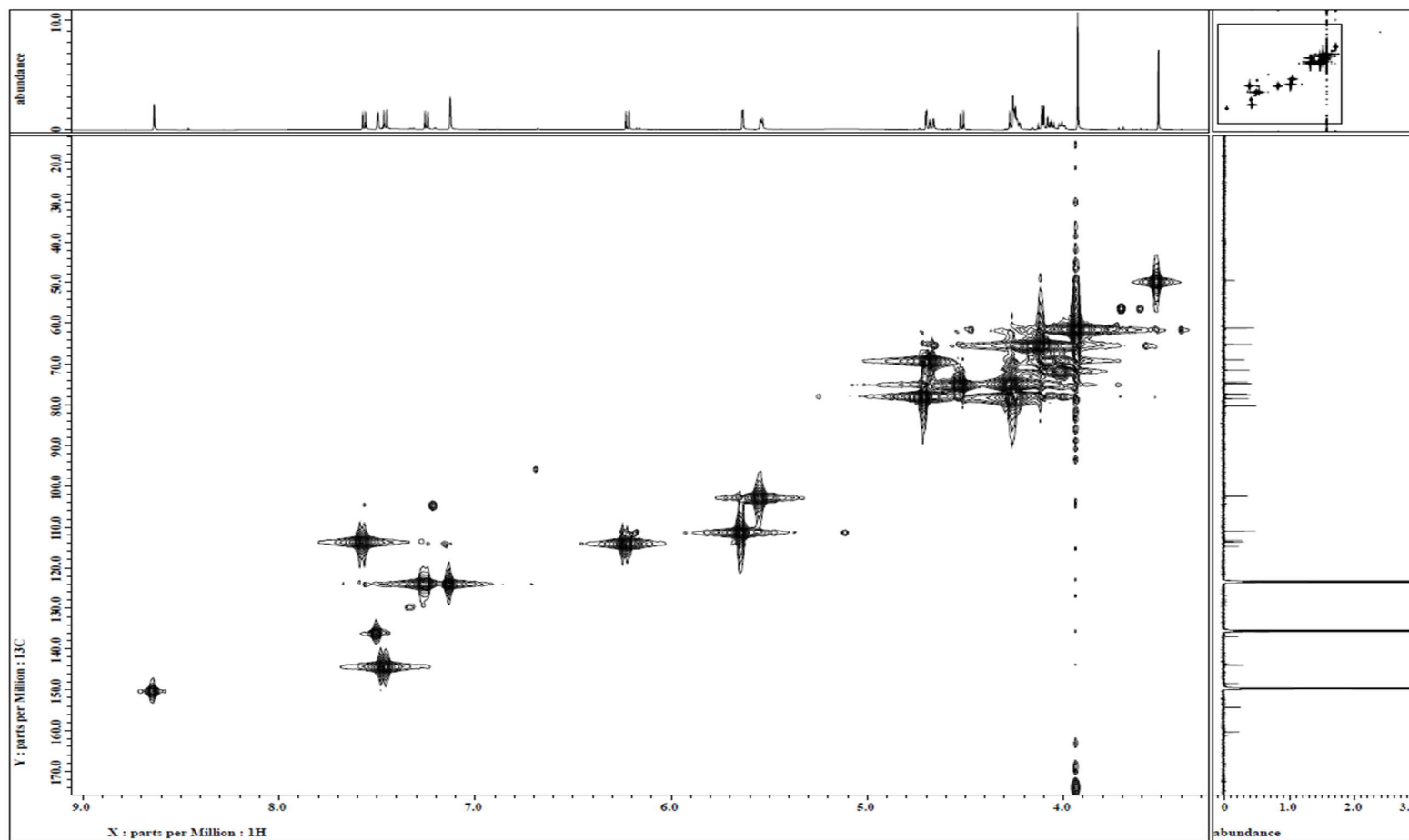


Figure S12. HMQC spectrum of compound 1

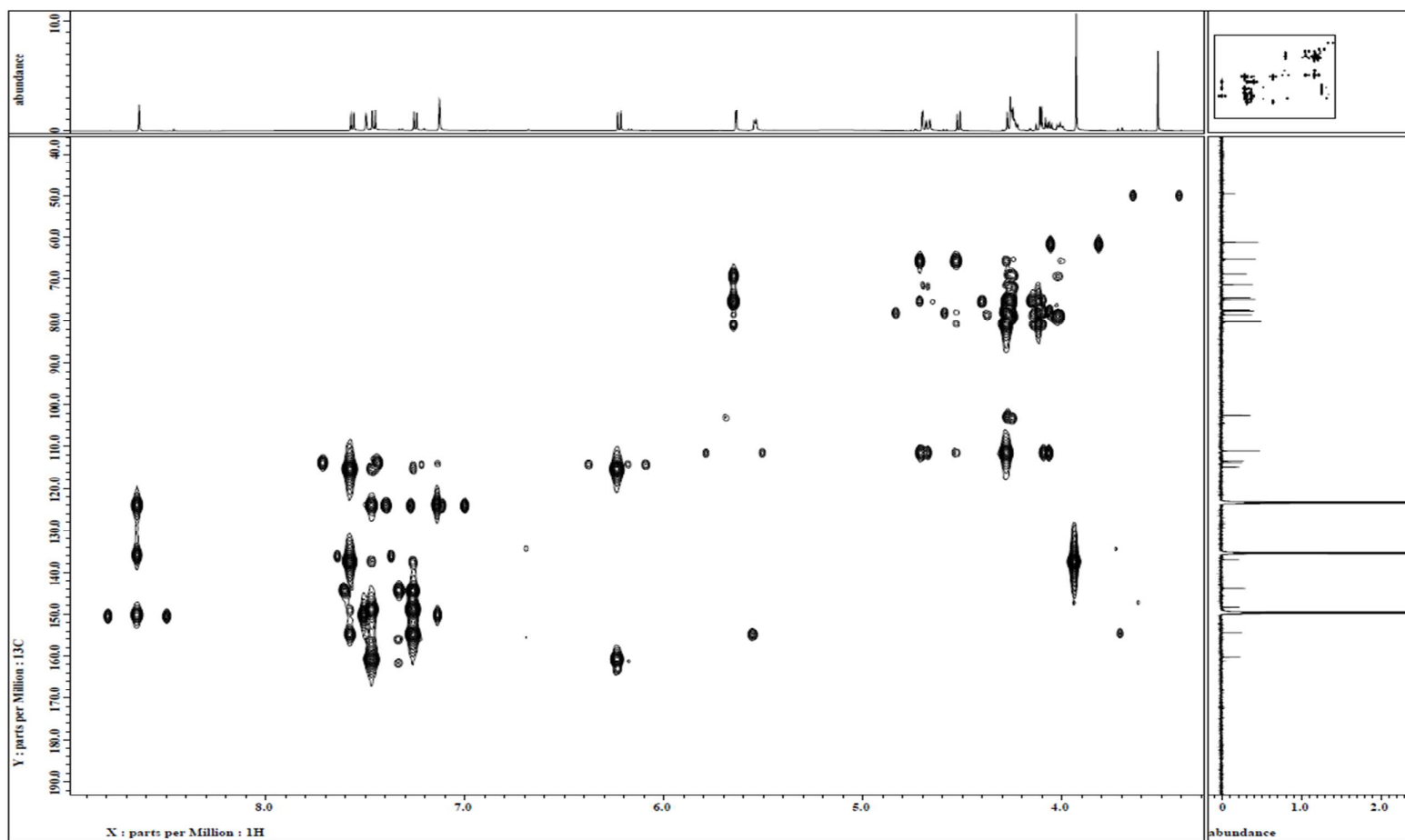


Figure S13. HMBC spectrum of compound 1

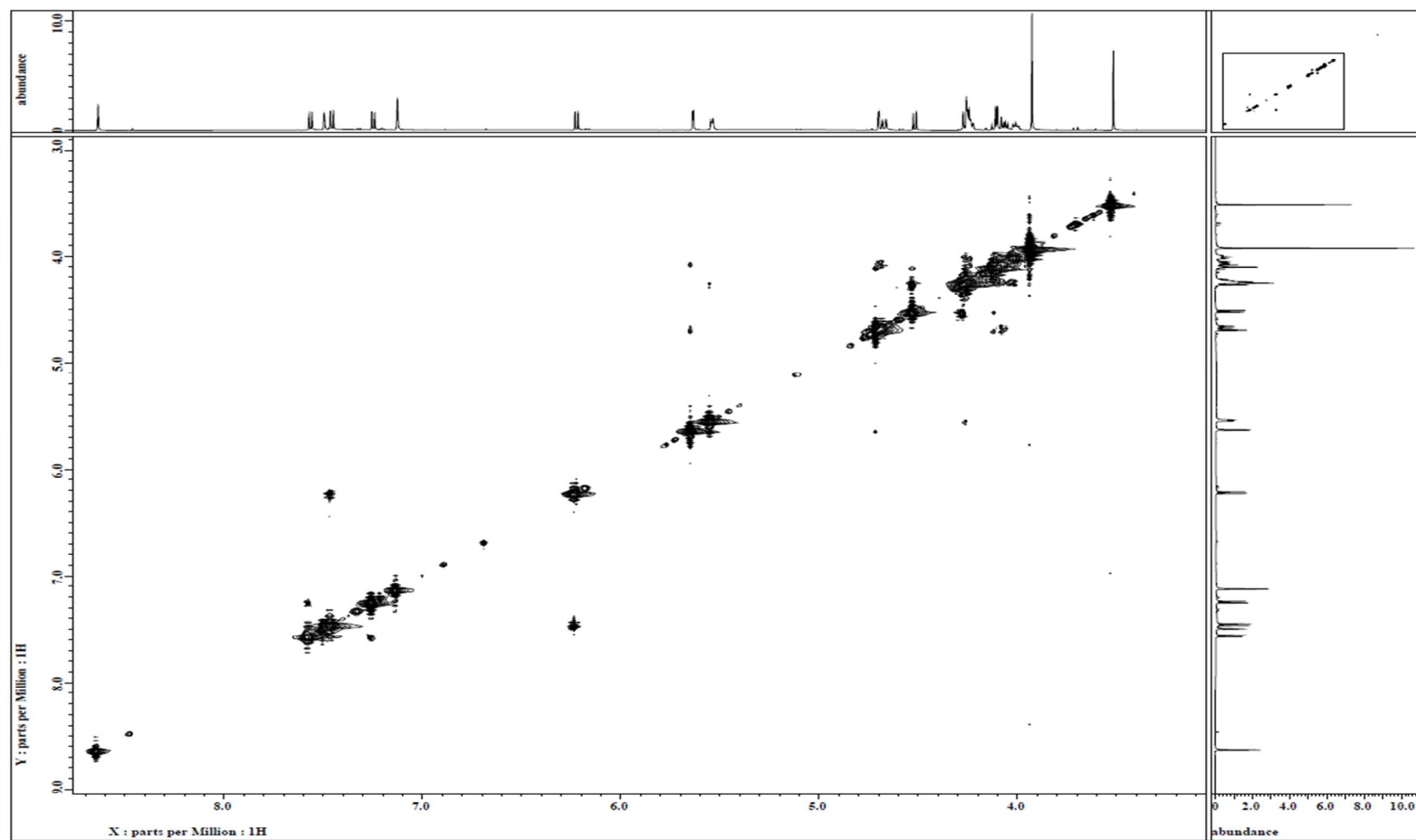


Figure S14. NOESY spectrum of compound **1**

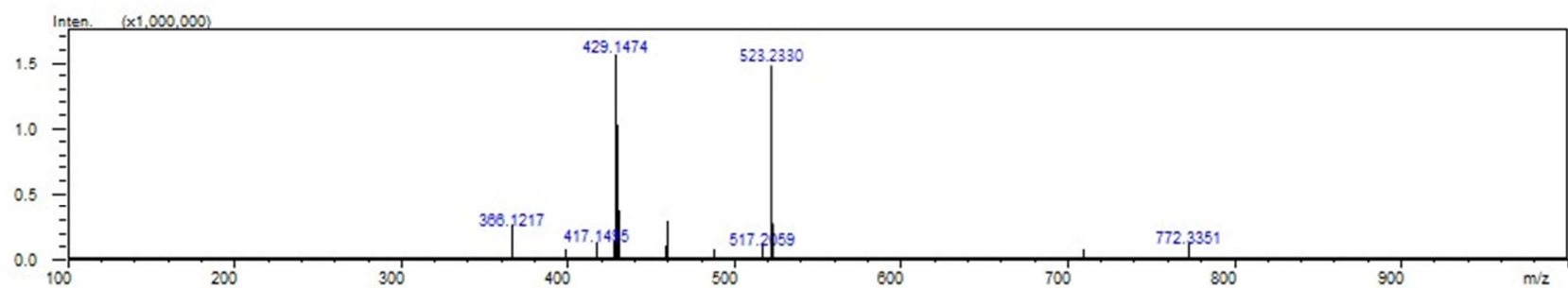


Figure S15. HR-ESI-MS spectrum of compound **2**

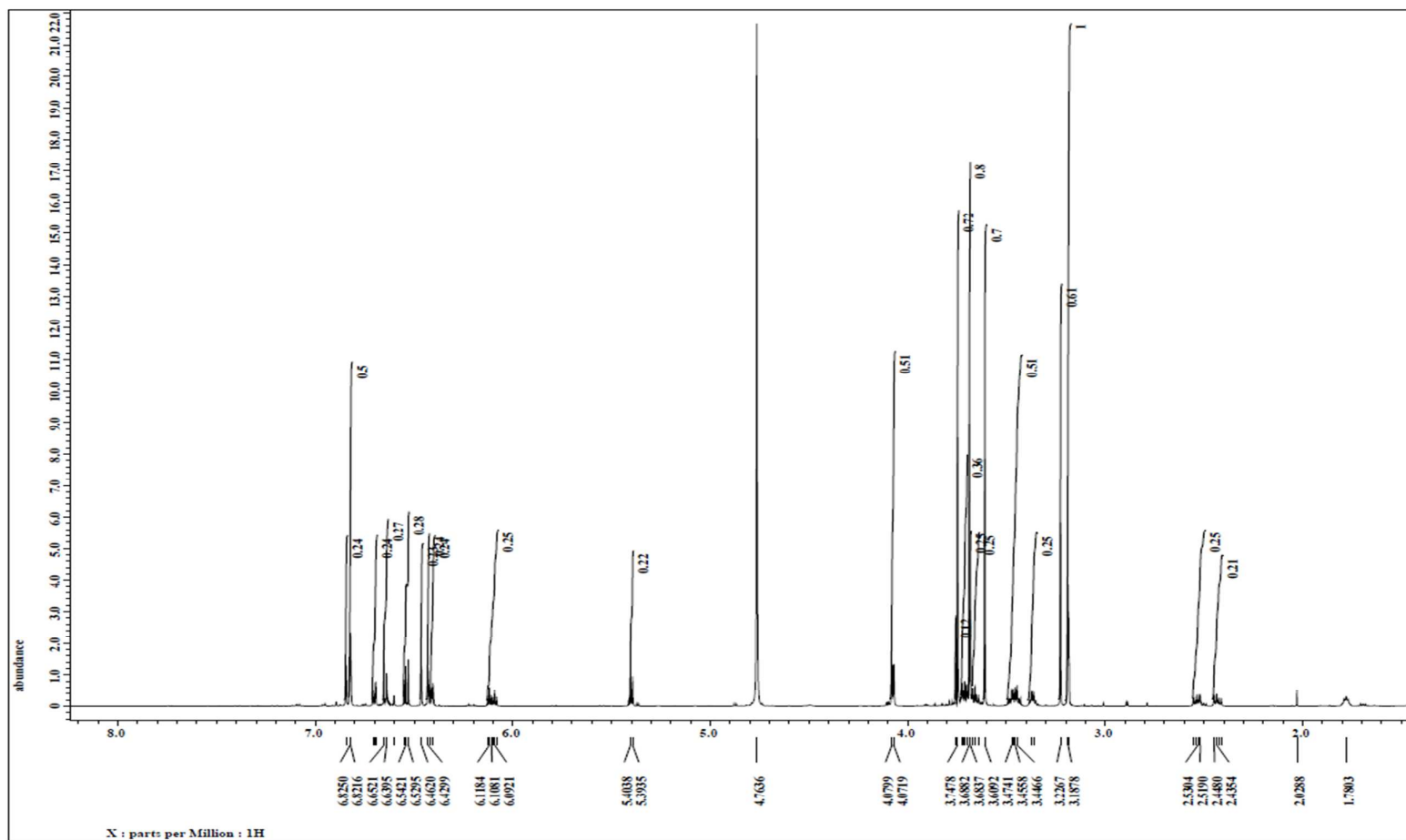


Figure S16. ^1H NMR spectrum of compound 2 (methanol- d_4 , 600 MHz)

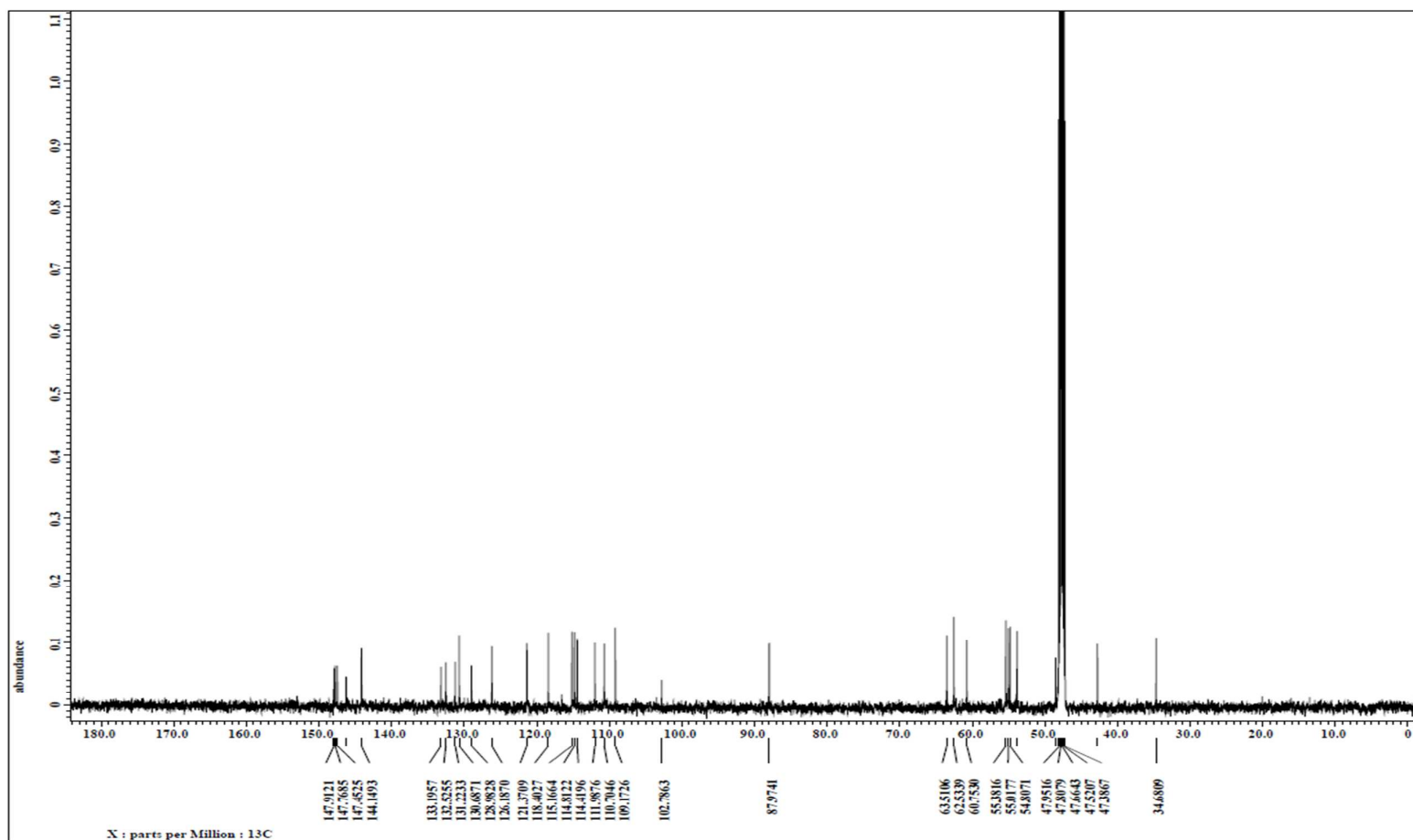


Figure S17. ¹³C NMR spectrum of compound **2** (methanol-*d*₄, 600 MHz)

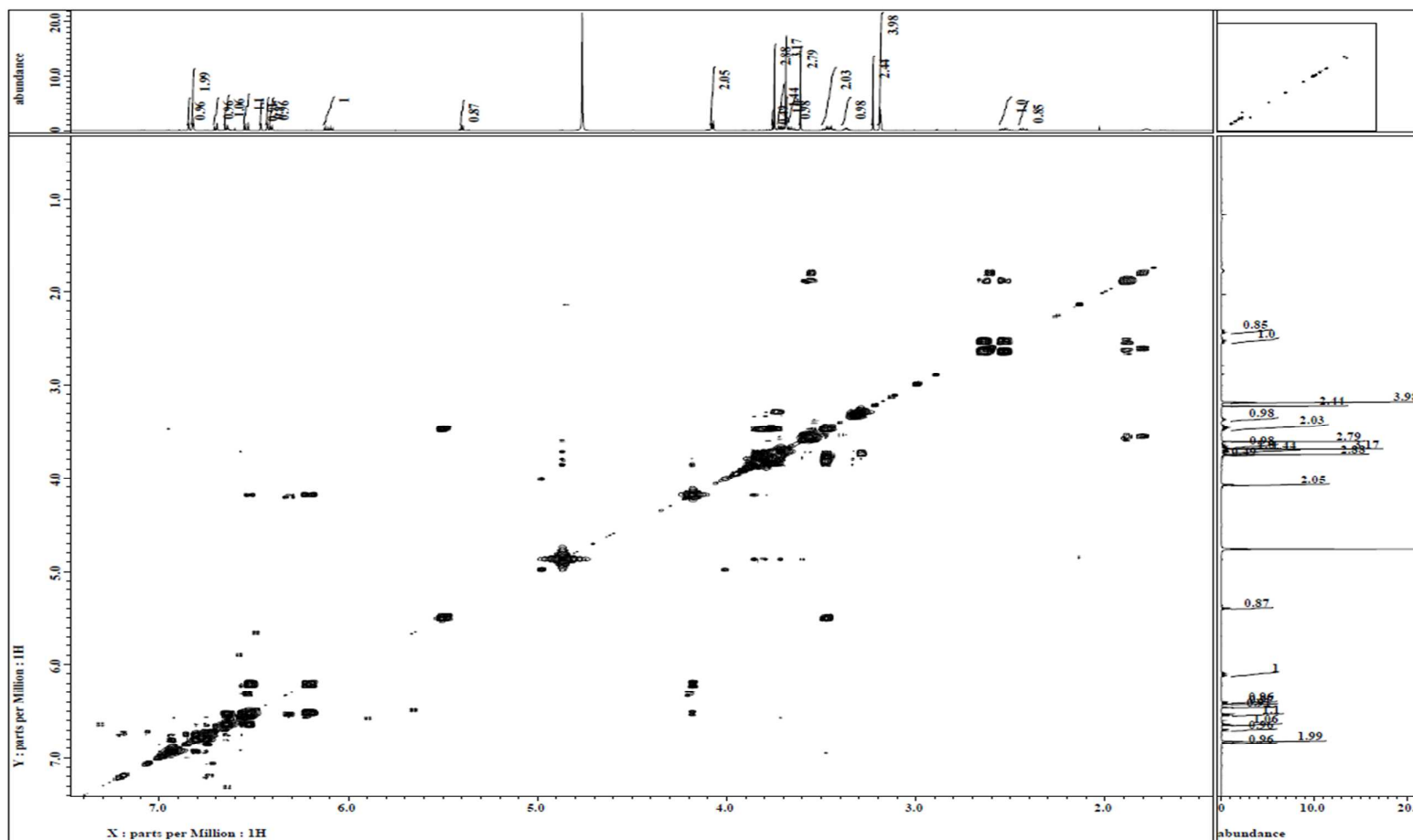


Figure S18. COSY spectrum of compound 2

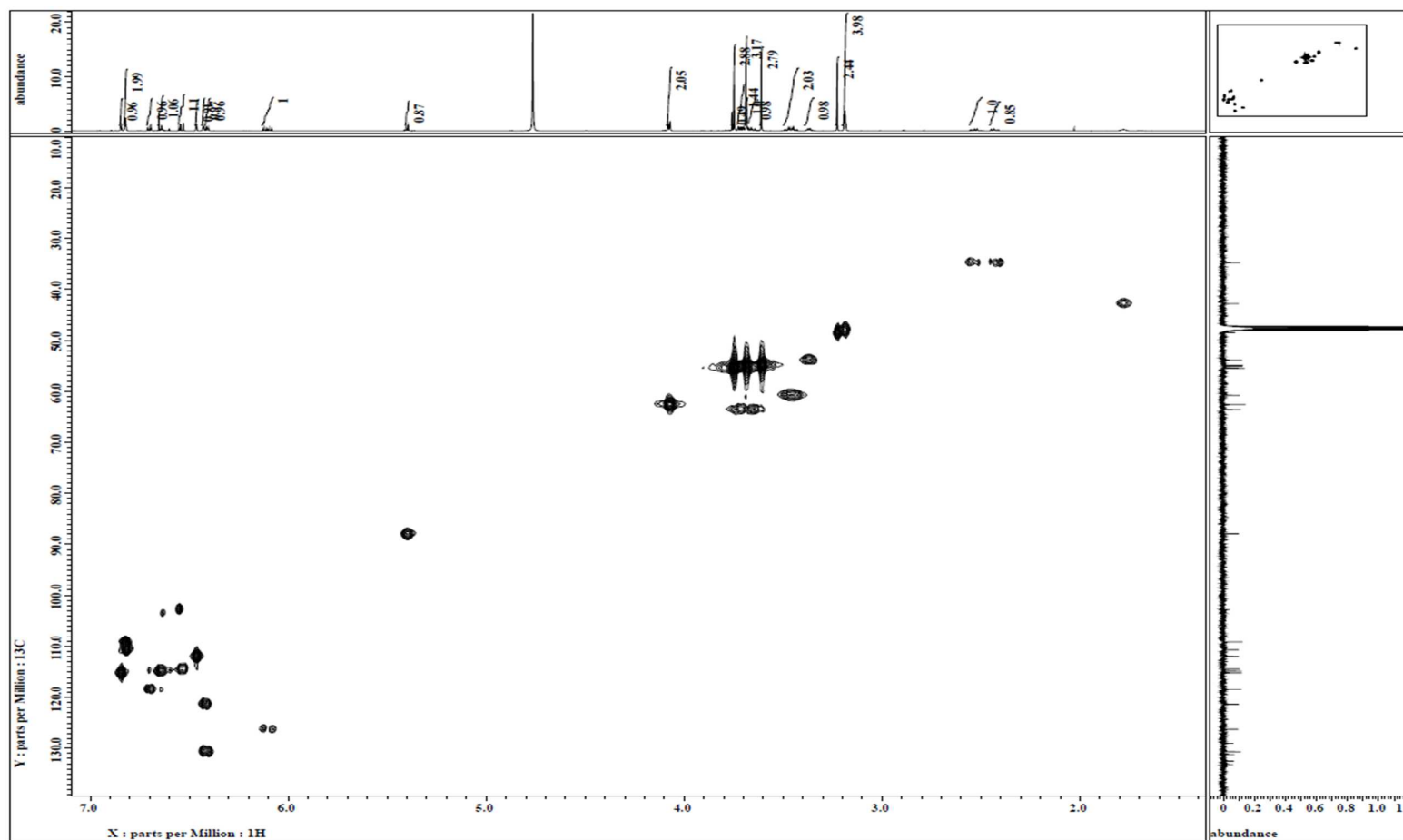


Figure S19. HMQC spectrum of compound 2

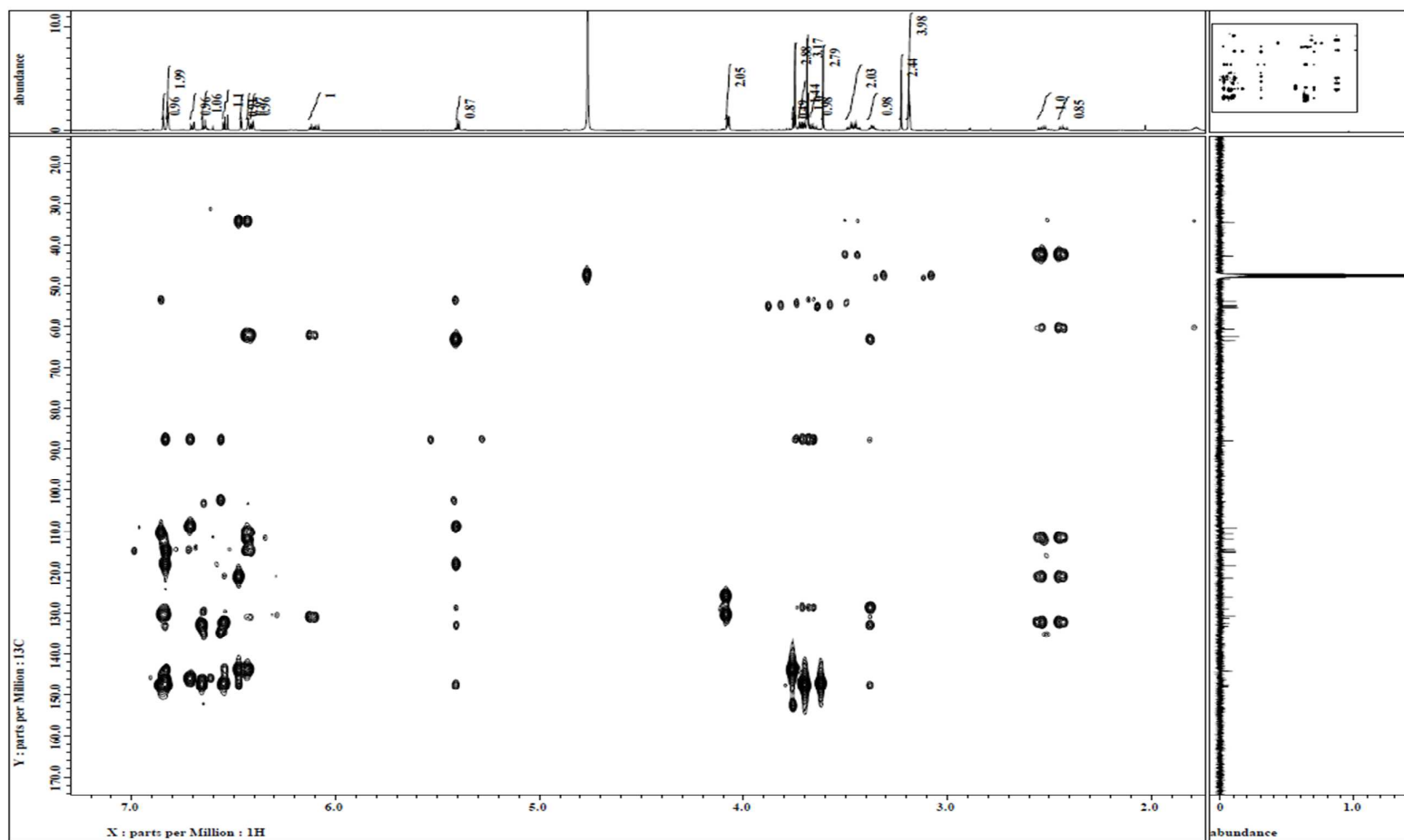


Figure S20. HMBC spectrum of compound 2

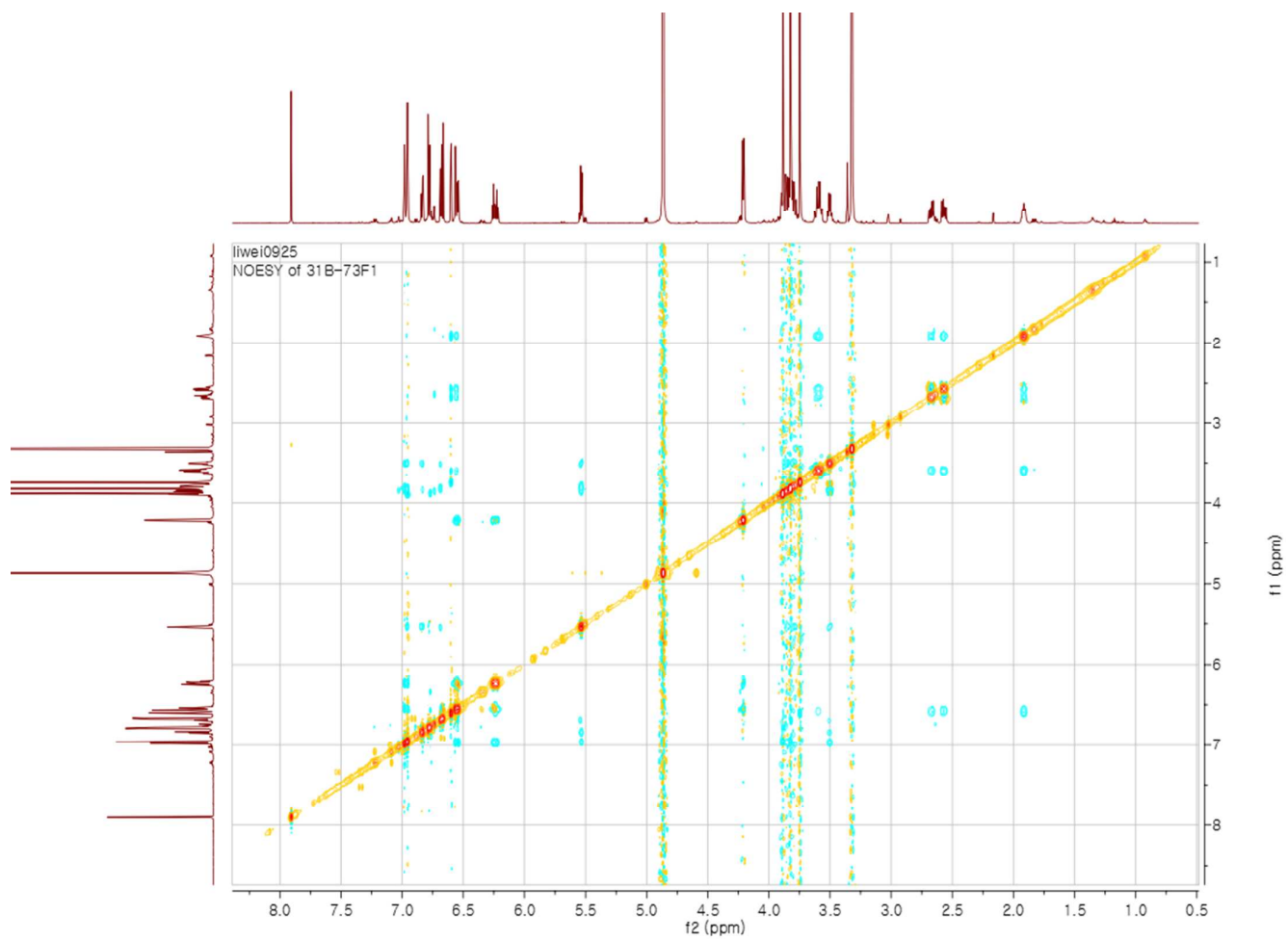


Figure S21. NOESY spectrum of compound **2**