

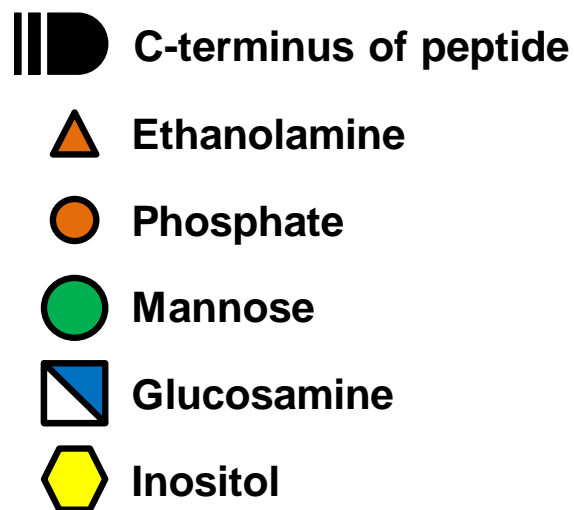
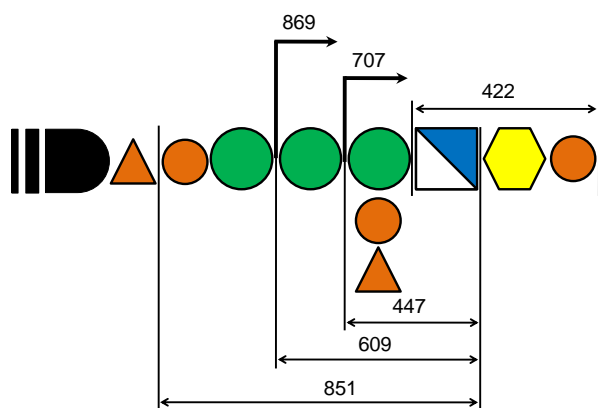
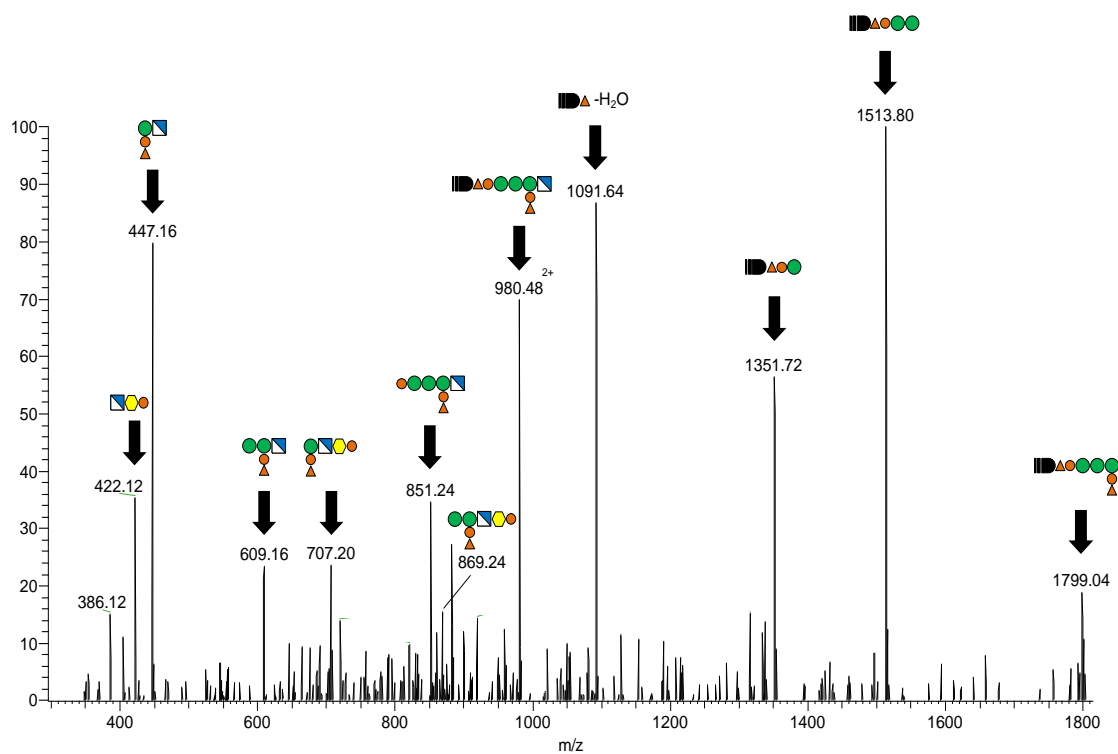
Supporting Information

Figure S1: Analysis by LC-MS³ of GPI-anchored peptide (PI-PLC treated).


(A) The general scheme of GPI-anchored peptide structure in mammalian cells and GPI anchor-specific marker ion masses.

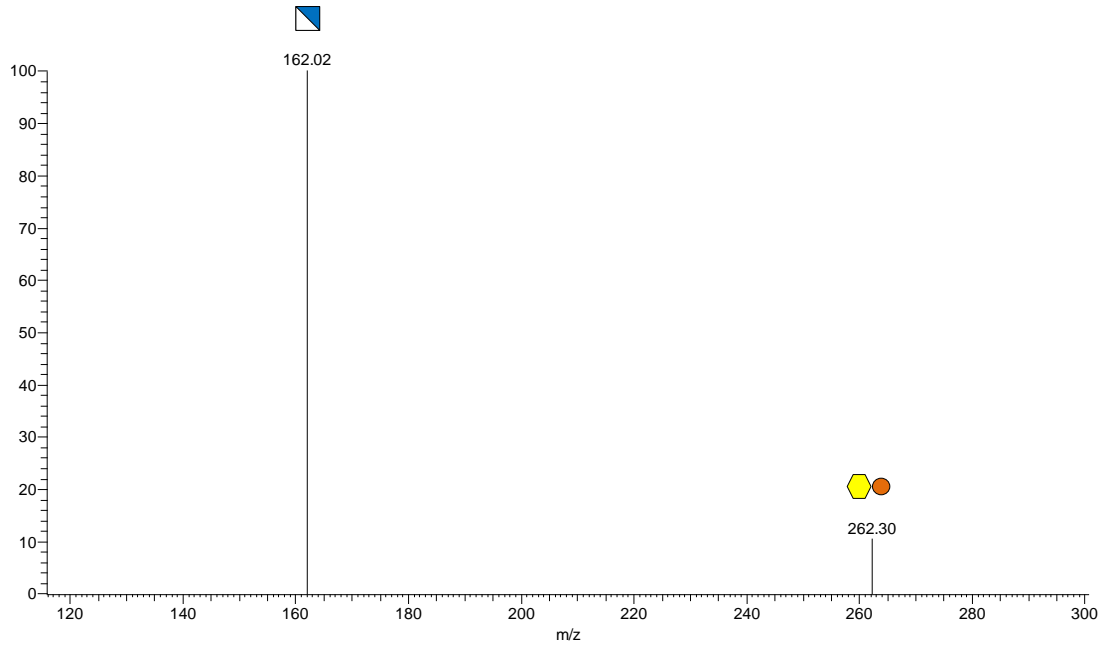
(B) The MS/MS spectrum of GPI-anchored peptide (m/z 1110.92²⁺) from PI-PLC-treated aqueous fraction after Triton X-114 phase separation.


(C) MS³ spectrum of the fragment corresponding to the peptide at m/z 422⁺, 447⁺, 609⁺, 707⁺, 851⁺, 980²⁺, 1091⁺, 1351⁺, 1514⁺, and 1799⁺. Peptide fragments are indicated.

A**B** 1110.92²⁺ *m/z* MS/MS spectrum**Fig S1 , Masuishi et al.**

C

422⁺ 



447⁺ 

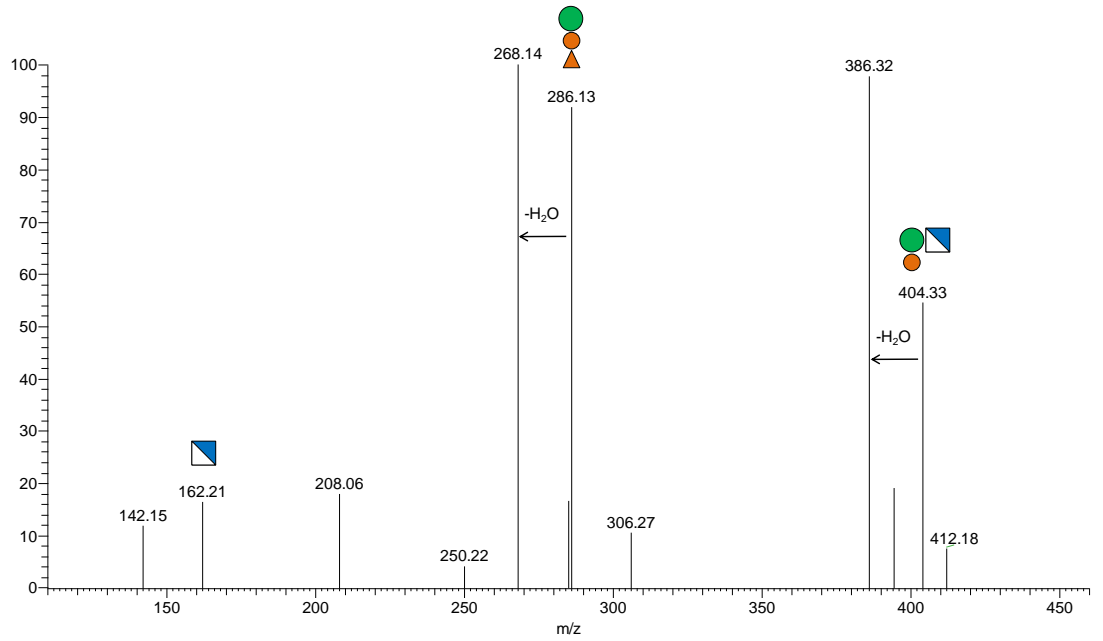


Fig S1 , Masuishi et al.

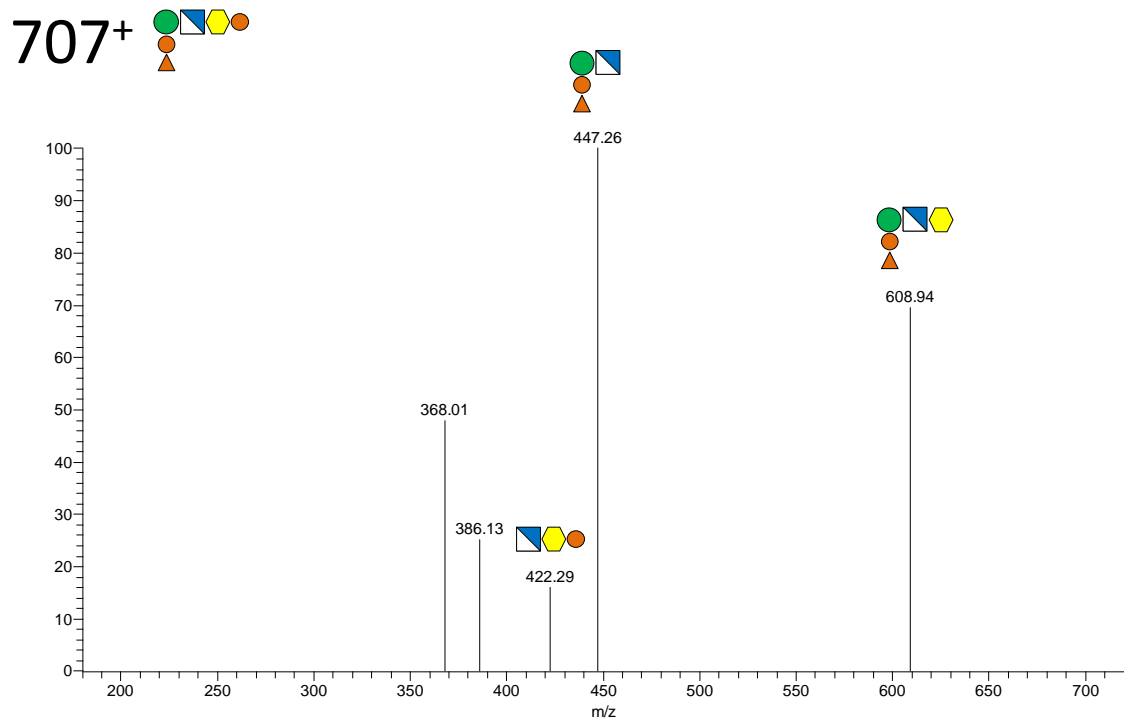
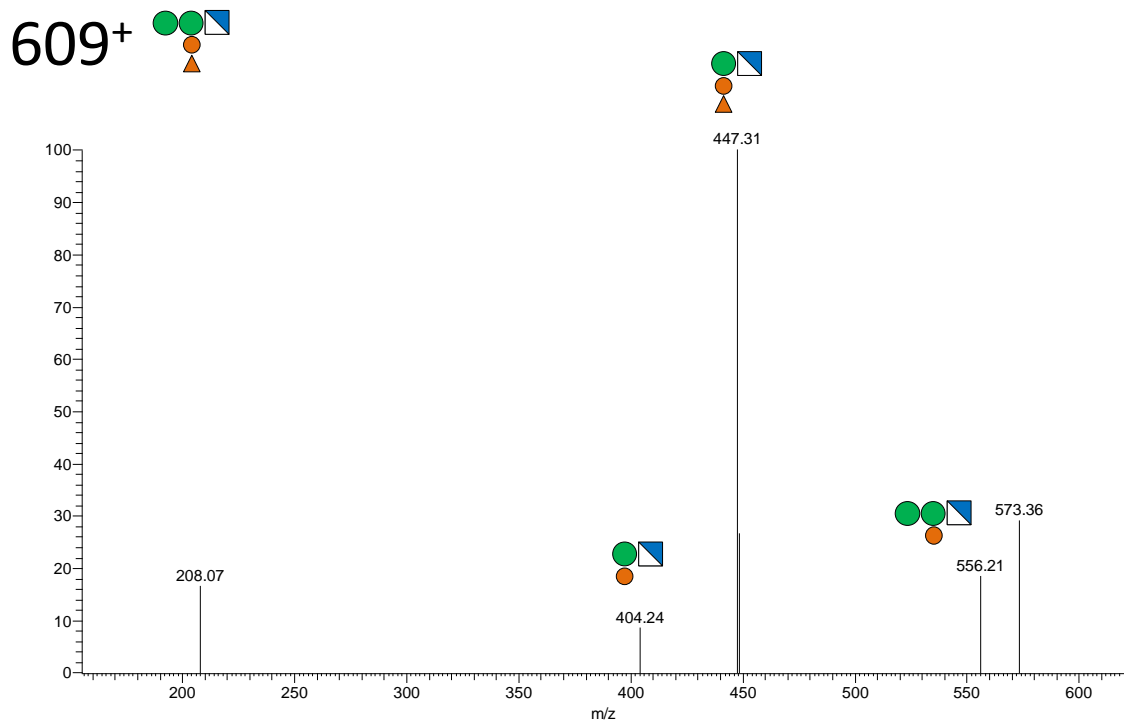
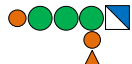
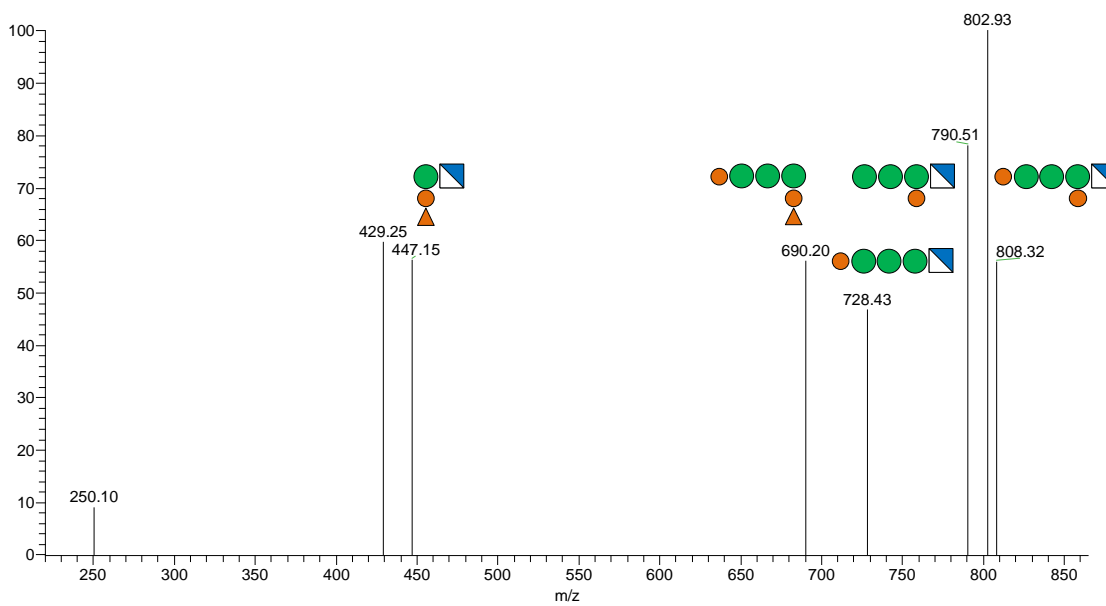


Fig S1 , Masuishi et al.

851⁺ 



980²⁺ 

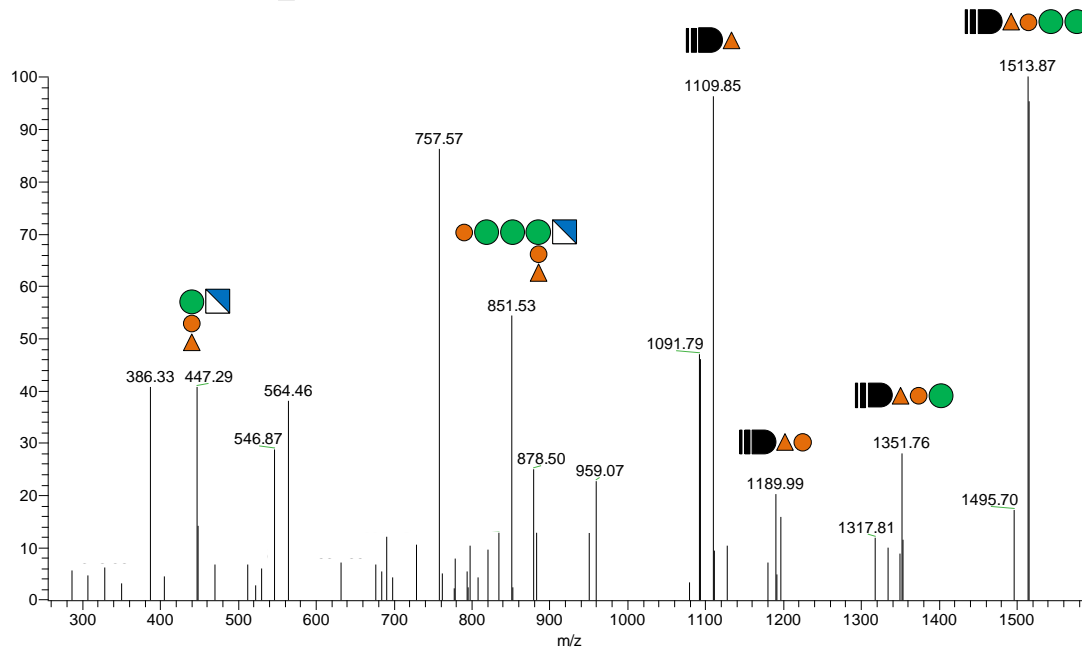

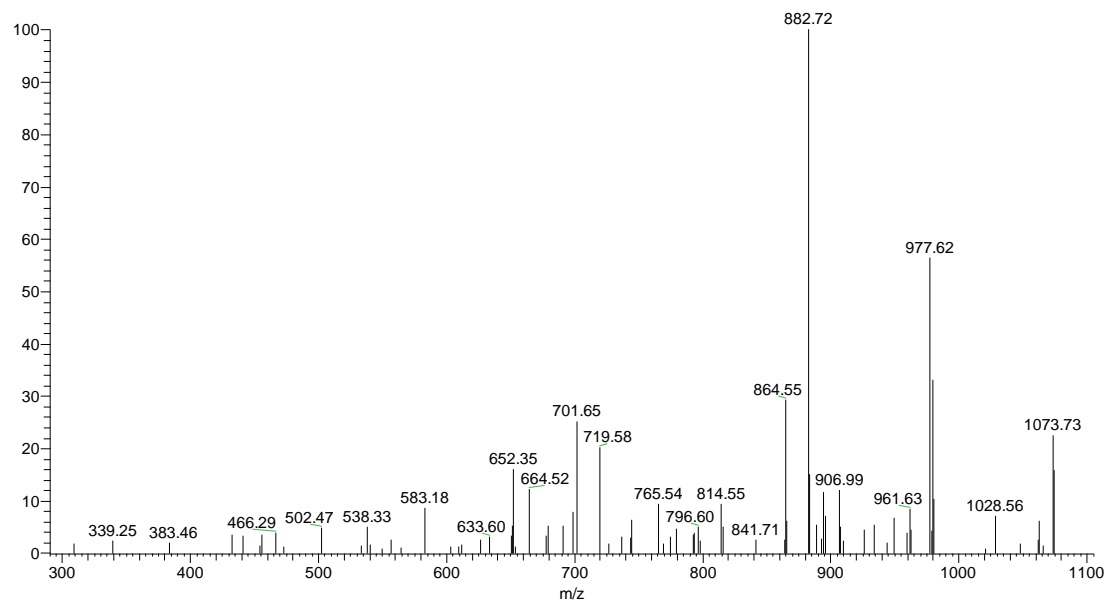



Fig S1 , Masuishi et al.

1091⁺ 



1351⁺ 

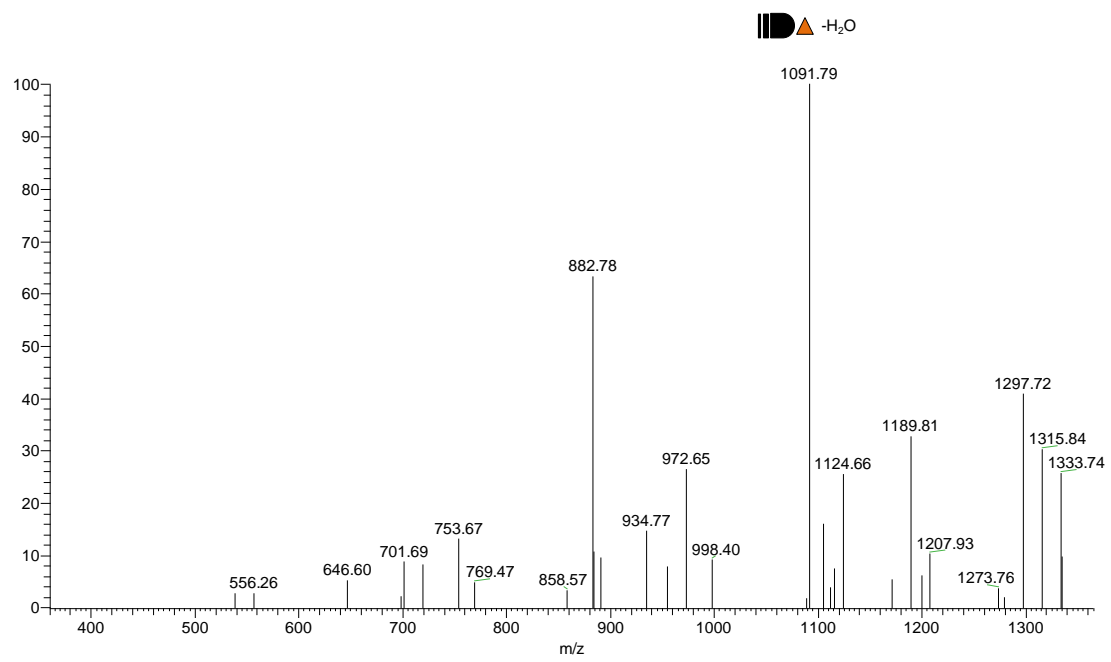

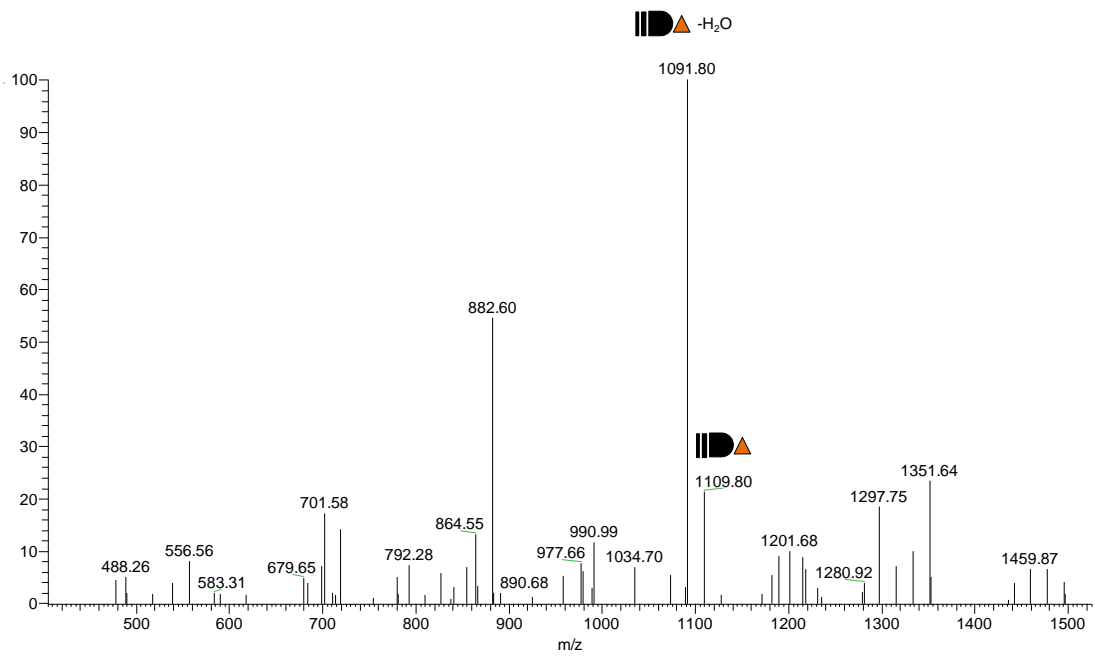



Fig S1 , Masuishi et al.

1514⁺ 



1799⁺ 

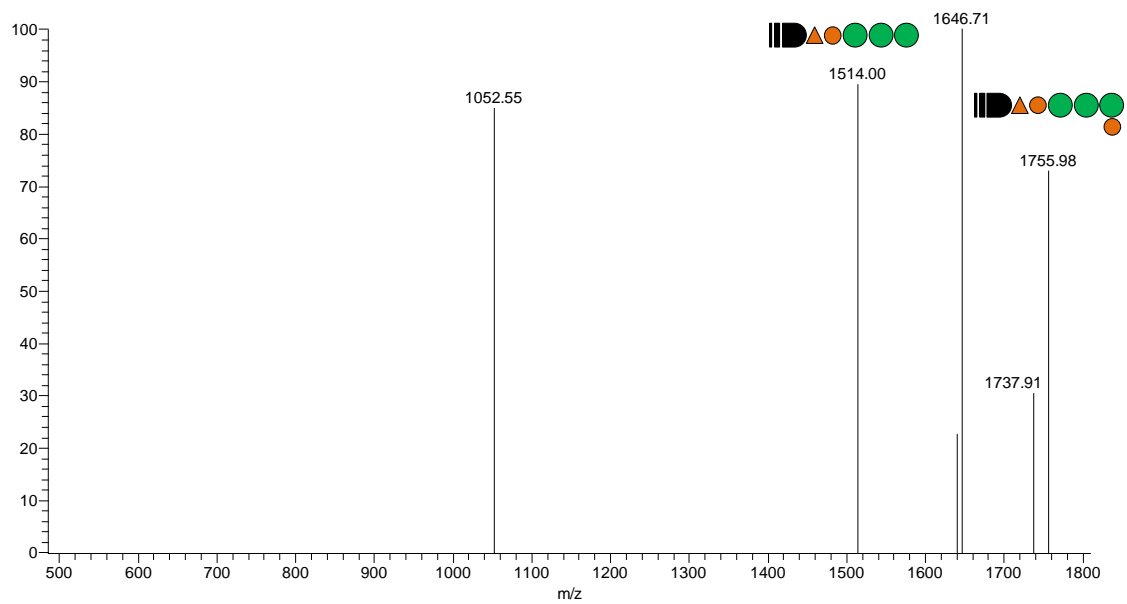


Fig S1 , Masuishi et al.