

## Supporting Information

for

### **Patterned Biofilm Formation Reveals a Mechanism for Structural Heterogeneity in Bacterial Biofilms**

Huan Gu<sup>1,2, ‡</sup>, Shuyu Hou<sup>1,2, ‡</sup>, Chanokpon Yongyat<sup>1,2</sup>, Suzanne De Tore<sup>1,2, §</sup>, and Dacheng Ren<sup>1,2,3,4, \*</sup>

<sup>1</sup>Department of Biomedical and Chemical Engineering, <sup>2</sup>Syracuse Biomaterials Institute, <sup>3</sup>Department of Civil and Environmental Engineering, <sup>4</sup>Department of Biology, Syracuse University, Syracuse, NY 13244, United States.

<sup>‡</sup> These authors contributed equally

<sup>§</sup>Current address: Syracuse City School District, 725 Harrison Street, Syracuse, NY 13210, USA

\*Corresponding author:

Dacheng Ren: Phone 001-315- 443-4409. Fax 001-315- 443-9175. Email [dren@syr.edu](mailto:dren@syr.edu).

**Table S1.** List of *E. coli* strains and plasmids used in this study.

	<b>Genotype</b>	<b>Characteristics</b>	<b>Source/References</b>
<b><i>E. coli</i> Strains</b>			
RP437	Wild type [ <i>thr-1</i> (Am) <i>leuB6</i> <i>his-4</i> <i>metF159</i> (Am) <i>eda-50</i> <i>rpsL1356</i> <i>thi-1</i> <i>ara-14</i> <i>mtl-1</i> <i>xyl-5</i> <i>tonA31</i> <i>tsx-78</i> <i>lacY1</i> F <sup>-</sup> ]	Wild type strain for biofilm study	[1]
RP3087	RP437 ( <i>motB</i> )580	Motility mutant (point mutation in <i>motB</i> )	[2]
RP4979	RP437 <i>eda</i> <sup>+</sup> Δ <i>m43-10</i> ( <i>cheY</i> )	Chemotaxis mutant	[3, 4]
RP3525	RP437 Δ <i>tap-365-4</i> Δ( <i>lac</i> ) <i>U169</i> <i>thr</i> <sup>+</sup> <i>leu</i> <sup>+</sup>	Chemotaxis mutant	[5, 6]
KX1485	RP437 <i>luxS</i> ::Cm <sup>r</sup>	Quorum sensing mutant, unable to synthesize AI-2	[7, 8]
BL-19	RP437 Δ <i>motB</i>	Motility mutant (deletion mutation of <i>motB</i> )	[2]
<b>Plasmids</b>			
pRSH109	Amp <sup>r</sup> , <i>gfp</i>	Label cells with constitutive GFP	This study
pDsRed	Amp <sup>r</sup> , <i>rfp</i>	Label cells with constitutive RFP	Life Technologies Inc., Carlsbad, CA, USA
pRHG01	<i>luxS</i> <sup>+</sup> , Amp <sup>r</sup>	pCR2.1®-TOPO® with <i>luxS</i> gene controlled by its native promoter	This study

**Table S2.** Pearson correlation coefficients between Cell Cluster Interaction Index (CII) and pattern size.

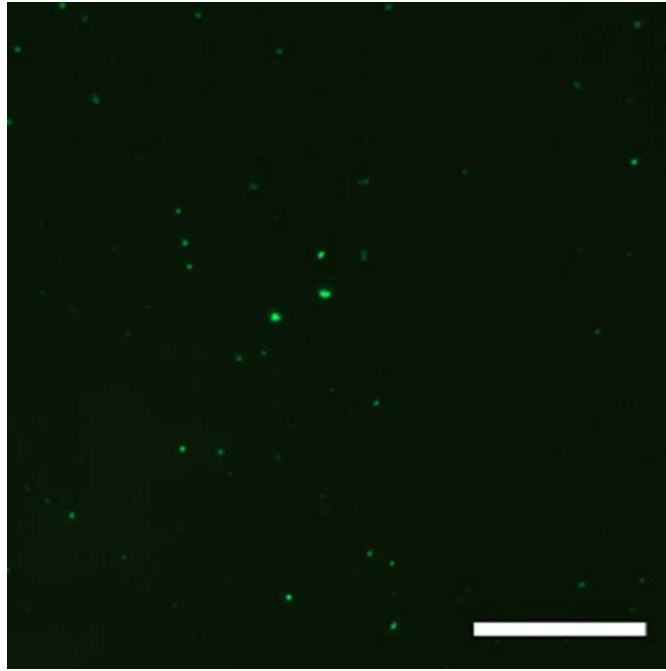
Distance (D, $\mu\text{m}$ )	Pattern Size (W, $\mu\text{m}$ )	Correlation Coefficient (r)
10	$\leq 20 \mu\text{m} \times 20 \mu\text{m}$	-0.45 <sup>**</sup>
	$>20 \mu\text{m} \times 20 \mu\text{m}$	0.93 <sup>**</sup>
15	$\leq 20 \mu\text{m} \times 20 \mu\text{m}$	-0.23 <sup>*</sup>
	$>20 \mu\text{m} \times 20 \mu\text{m}$	0.94 <sup>**</sup>
20	$\leq 20 \mu\text{m} \times 20 \mu\text{m}$	-0.20
	$>20 \mu\text{m} \times 20 \mu\text{m}$	0.93 <sup>**</sup>
30	$\leq 20 \mu\text{m} \times 20 \mu\text{m}$	-0.20
	$>20 \mu\text{m} \times 20 \mu\text{m}$	0.93 <sup>**</sup>
40	$\leq 20 \mu\text{m} \times 20 \mu\text{m}$	-0.25 <sup>*</sup>
	$>20 \mu\text{m} \times 20 \mu\text{m}$	0.92 <sup>**</sup>
50	$\leq 20 \mu\text{m} \times 20 \mu\text{m}$	-0.47 <sup>**</sup>
	$>20 \mu\text{m} \times 20 \mu\text{m}$	0.95 <sup>**</sup>

\* P < 0.05.

\*\* P < 0.0001.

**Table S3.** Biofilm formation of *E coli* RP437 and its isogenic mutants on patterned surfaces.

<b>Genotype</b>	<b>Attachment on patterns</b>	<b>Interaction among cell clusters</b>
Wild-type	Fully covered patterns	Normal interaction
<i>ΔcheY</i>	Barely covered	No interaction
<i>Δtap</i>	Barely covered	No interaction
<i>motB</i> point mutant	Relatively normal cell clusters (slightly less coverage than the wild type)	Significantly reduced interaction
<i>ΔmotB</i>	Barely covered	No interaction
<i>ΔluxS</i>	Relatively normal cell clusters (slightly less coverage than the wild type)	Significantly reduced interaction



**Figure S1.** Attachment of *E. coli* BL-19 (RP437  $\Delta$ *motB*) on a surface with 20  $\mu\text{m} \times 20 \mu\text{m}$  SAM patterns after 24 h of incubation. Bar = 50  $\mu\text{m}$ .

## References:

- [1] Parkinson, J. S.; Houts, S. E. Isolation and Behavior of *Escherichia-Coli* Deletion Mutants Lacking Chemotaxis Functions. *J. Bacteriol.* **1982**, 151, 106-113.
- [2] Blair, D. F.; Kim, D. Y.; Berg, H. C. Mutant MotB Proteins in *Escherichia coli*. *J. Bacteriol.* **1991**, 173, 4049-4055.
- [3] Scharf, B. E.; Fahrner, K. A.; Turner, L.; Berg, H. C. Control of Direction of Flagellar Rotation in Bacterial Chemotaxis. *Proc. Natl. Acad. Sci. USA.* **1998**, 95, 201-206.
- [4] Samuel, A. D.; Berg, H. C. Torque-Generating Units of the Bacterial Flagellar Motor Step Independently. *Biophys. J.* **1996**, 71, 918-923.
- [5] Liu, X.; Parales, R. E. Chemotaxis of *Escherichia coli* to Pyrimidines: a New Role for the Signal Transducer *tap*. *J. Bacteriol.* **2008**, 190, 972-979.
- [6] Yamamoto, K.; Macnab, R. M.; Imae, Y. Repellent Response Functions of the Trg and Tap Chemoreceptors of *Escherichia coli*. *J. Bacteriol.* **1990**, 172, 383-388.
- [7] Park, S.; Wolanin, P. M.; Yuzbashyan, E. A.; Lin, H.; Darnton, N. C.; Stock, J. B.; Silberzan, P.; Austin, R. Influence of Topology on Bacterial Social Interaction. *Proc. Natl. Acad. Sci. USA.* **2003**, 100, 13910-13915.
- [8] Diao, J. P.; Young, L.; Kim, S.; Fogarty, E. A.; Heilman, S. M.; Zhou, P.; Shuler, M. L.; Wu, M.; DeLisa, M. P. A Three-Channel Microfluidic Device for Generating Static Linear Gradients and its Application to the Quantitative Analysis of Bacterial Chemotaxis. *Lab on a Chip.* **2006**, 6, 381-388.