

ϵ -Decalactone: a thermoresilient and toughening comonomer to poly(L-lactide)

*Peter Olsén, Tina Borke, Karin Odelius, and Ann-Christine Albertsson**

Department of Fibre and Polymer Technology, KTH Royal Institute of Technology,
SE-100 44, Stockholm, Sweden

*Corresponding author: aila@polymer.kth.se

Tel. +46-8-790 82 74 Fax: +46-8-20 84 77

Supporting Information

Figure S1.

Conversion as a function of reaction time for the bulk copolymerization of DL (\square) and LA (\blacksquare) at 110 °C with $[DL]/[LA] \approx 1$, $[DL+LA]/[Sn(Oct)_2] \approx 200$ and $M_{n,theory} \approx 30,000$ g/mol measured by ^1H-NMR .

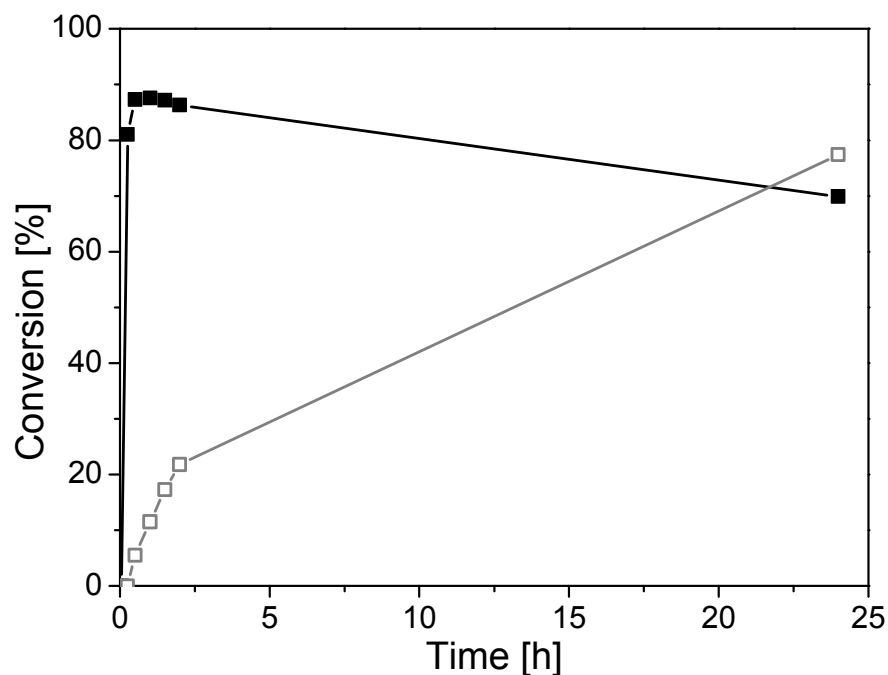


Figure S2.

Mol fractions of DL (\square) and LA (\blacksquare) incorporated into the polymer with time, determined by $^1\text{H-NMR}$. LA polymerizes first and reaches its highest conversion after 30 min. DL- units are subsequently incorporated by transesterification

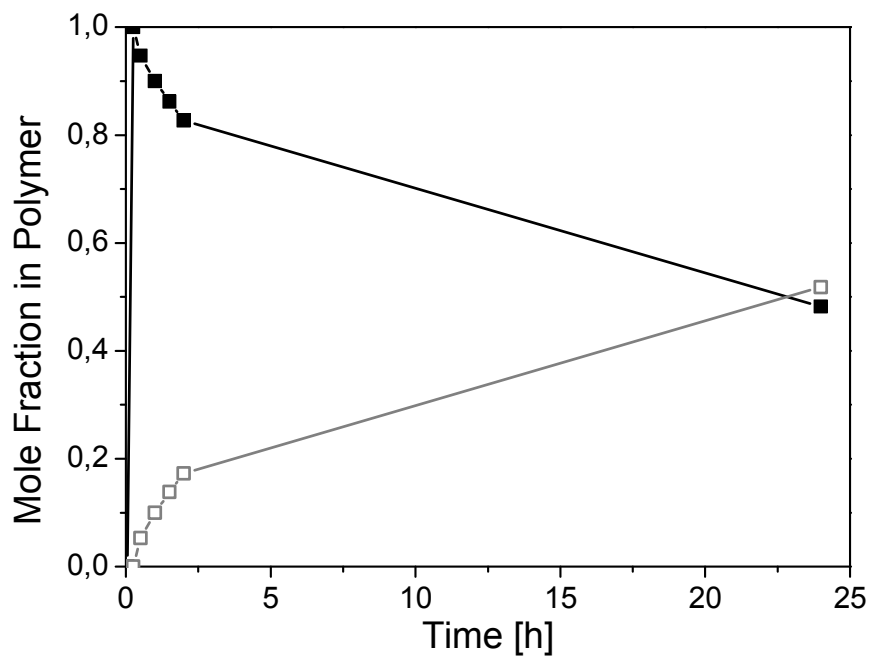


Figure S3.

$^{13}\text{C-NMR}$ spectrum of PDL polymerized with $\text{Sn}(\text{Oct})_2/\text{benzyl alcohol}$ for 134 h at $110\text{ }^\circ\text{C}$. The inset shows the structure of PDL with assignment of the signals.

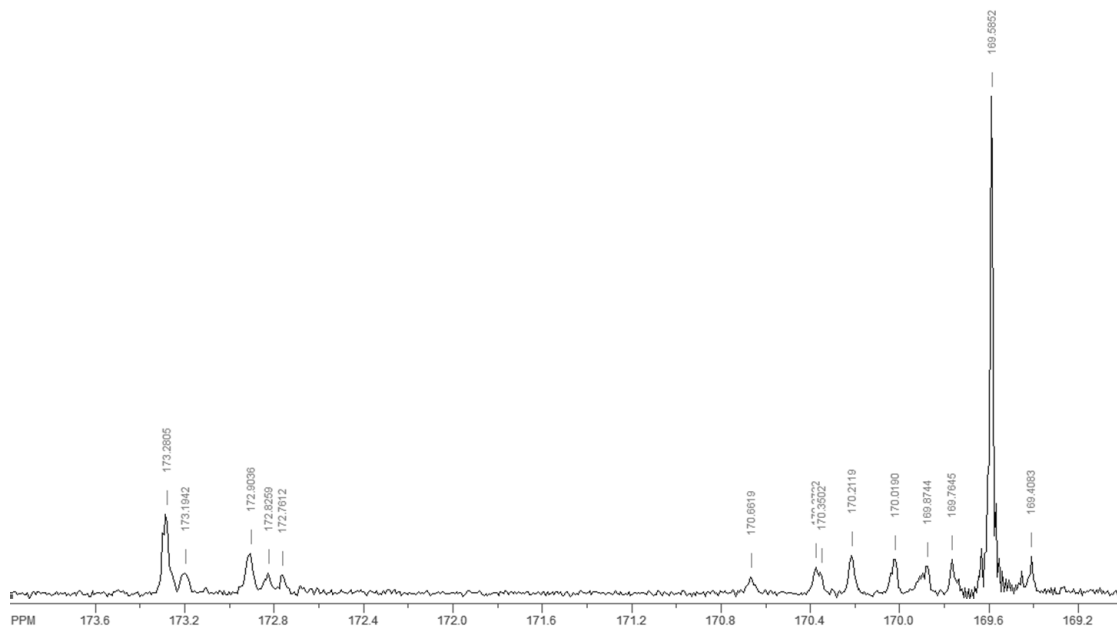


Figure S4.

Detail of the ^{13}C -NMR spectrum of a random PLA/PDL-copolymer showing the carbonyl region. The peaks at 169.6 ppm and 173.3 ppm belong to PLA- and PDL-homopolymer blocks, respectively. The other signals originate from a randomized structure that is a consequence of transesterification reactions.

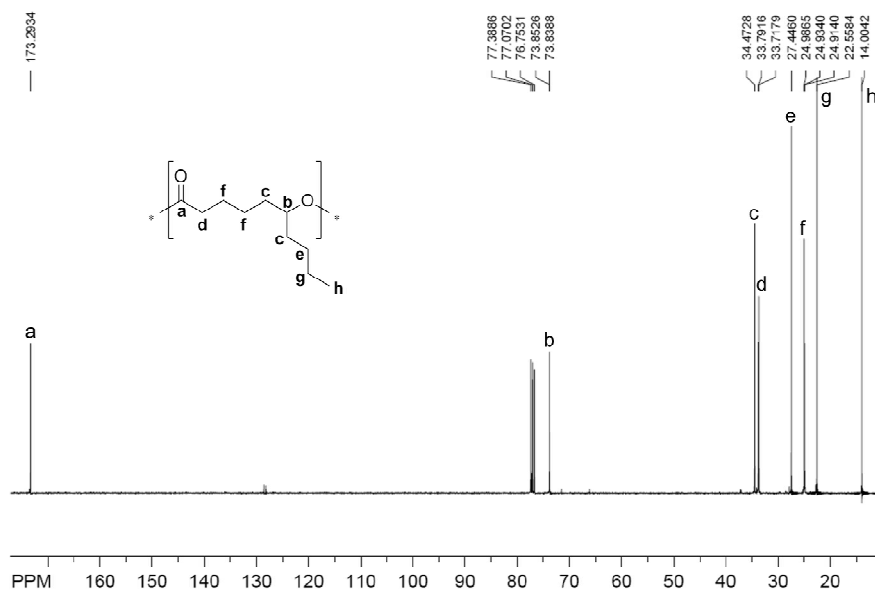


Figure S5

^1H -NMR spectra of (I.) a random PLA/PDL copolymer and (II.) a block copolymer showing different signals and peak pattern according to the neighboring monomer units

