

# *Supporting Information*

*for*

## **Through Bond Energy Transfer: A Convenient and Universal Strategy towards Efficient Ratiometric Fluorescent Probe for Bio-imaging Applications**

**Yi-Jun Gong, Xiao-Bing Zhang,\* Cui-Cui Zhang, Ai-Li Luo, Weihong Tan, Guo-Li Shen, and Ru-Qin Yu**

*Molecular Science and Biomedicine Laboratory, State Key Laboratory of Chemo/Biosensing and Chemometrics, College of Chemistry and Chemical Engineering, College of Biology, Hunan University, Changsha 410082.*

### Table of Contents

#### 1. Supplementary figures

Figure S1 -----2

Figure S2 -----3

#### 2. NMR spectra or Mass data for compounds **CR** and **CR-P**

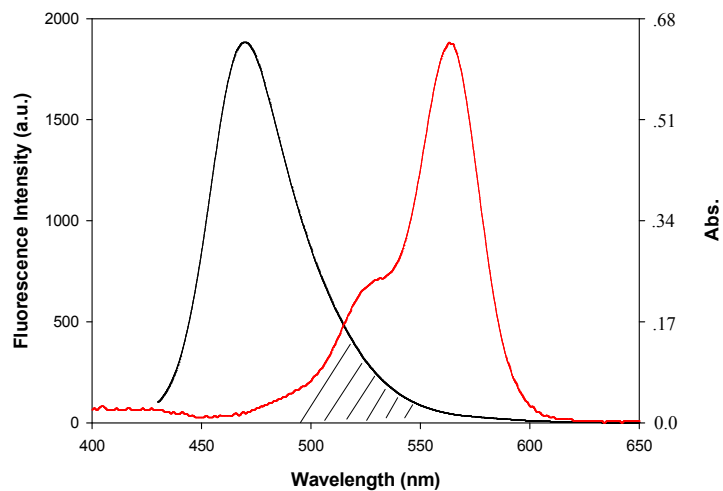
Mass spectrum of **CR**-----4

<sup>1</sup>H-NMR spectrum of **CR**-----5

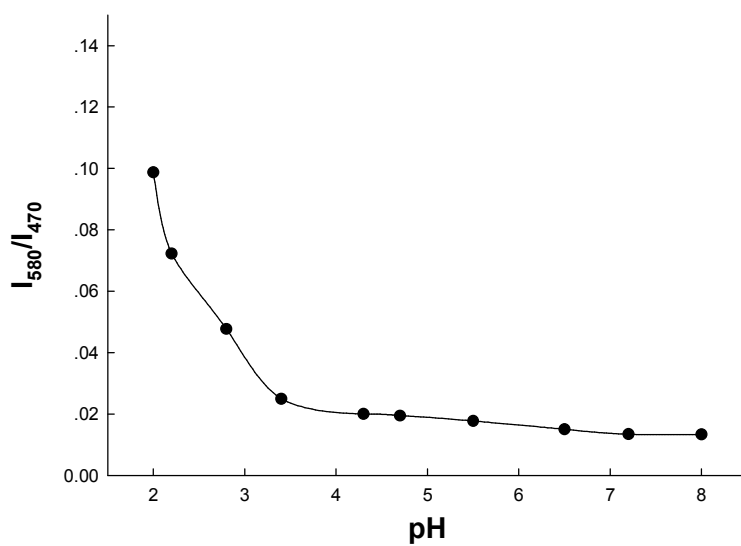
<sup>13</sup>C-NMR spectrum of **CR**-----6

Mass spectrum of **CR-P**-----7

## 1. Supplementary Figures

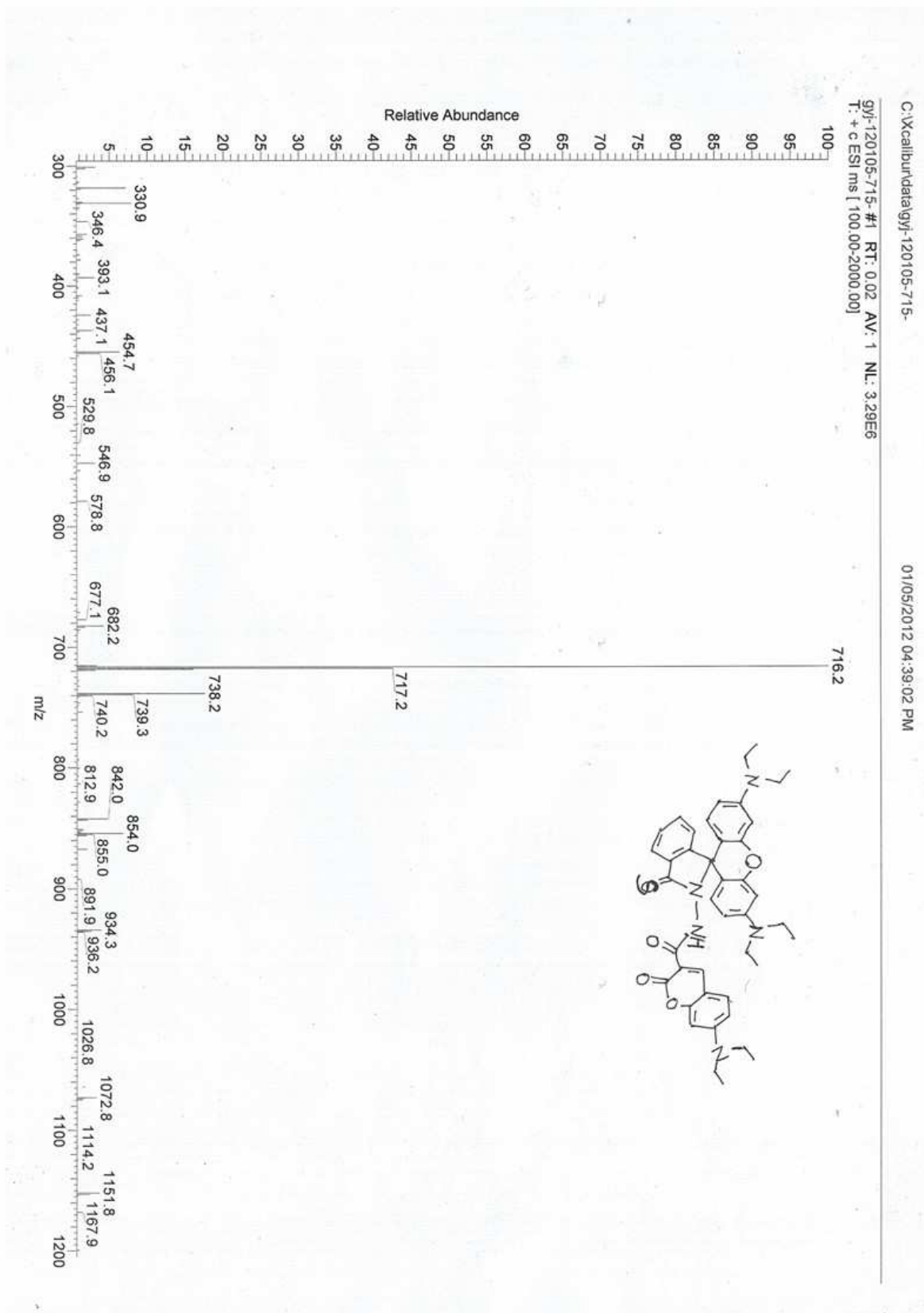


**Figure S1.** Normalized absorption of rhodamine B (red) and emission spectra of coumarin in **CR** (black). Shaded area indicates the spectral overlap between the emission of coumarin and the rhodamine B characteristic absorption.

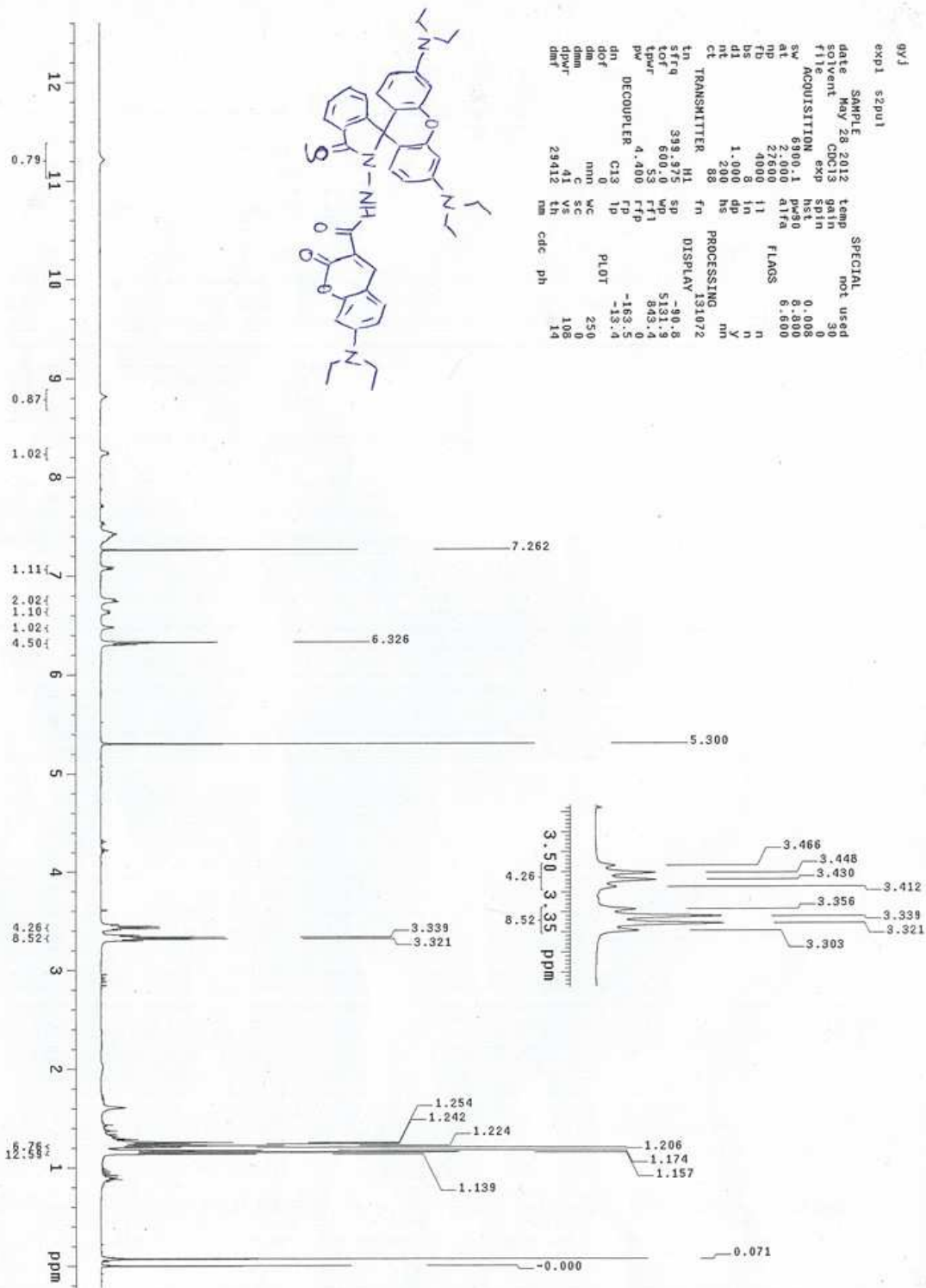


**Figure S2.** Fluorescence intensity ratio at  $I_{580}/I_{470}$  of **CR** as a function of different pH in buffered (HEPES, pH=7.2) water/THF (1 : 1, v/v) solution.

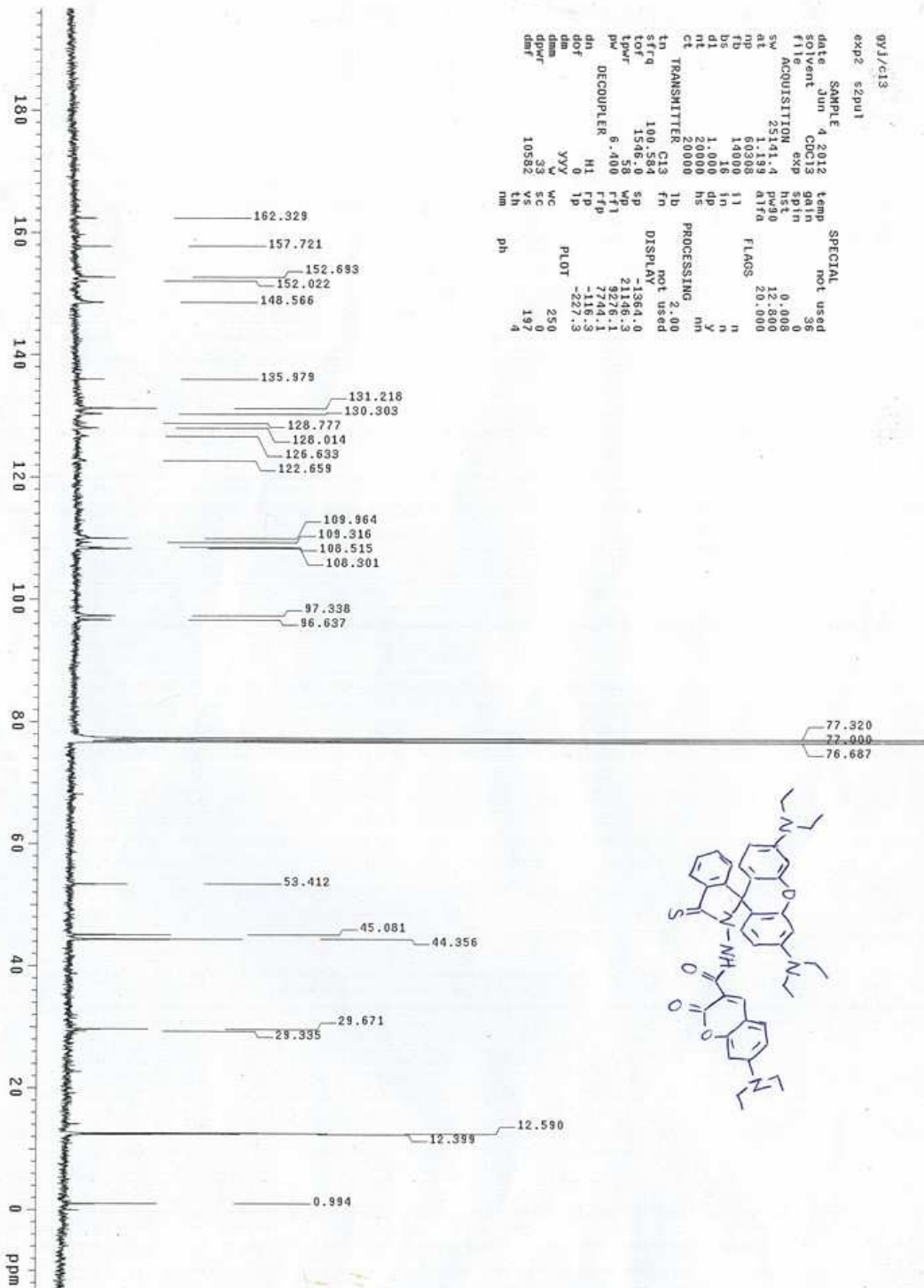
## 2. NMR spectra or Mass data for CR and CR-P



MS spectra of CR



<sup>1</sup>H NMR spectra of CR



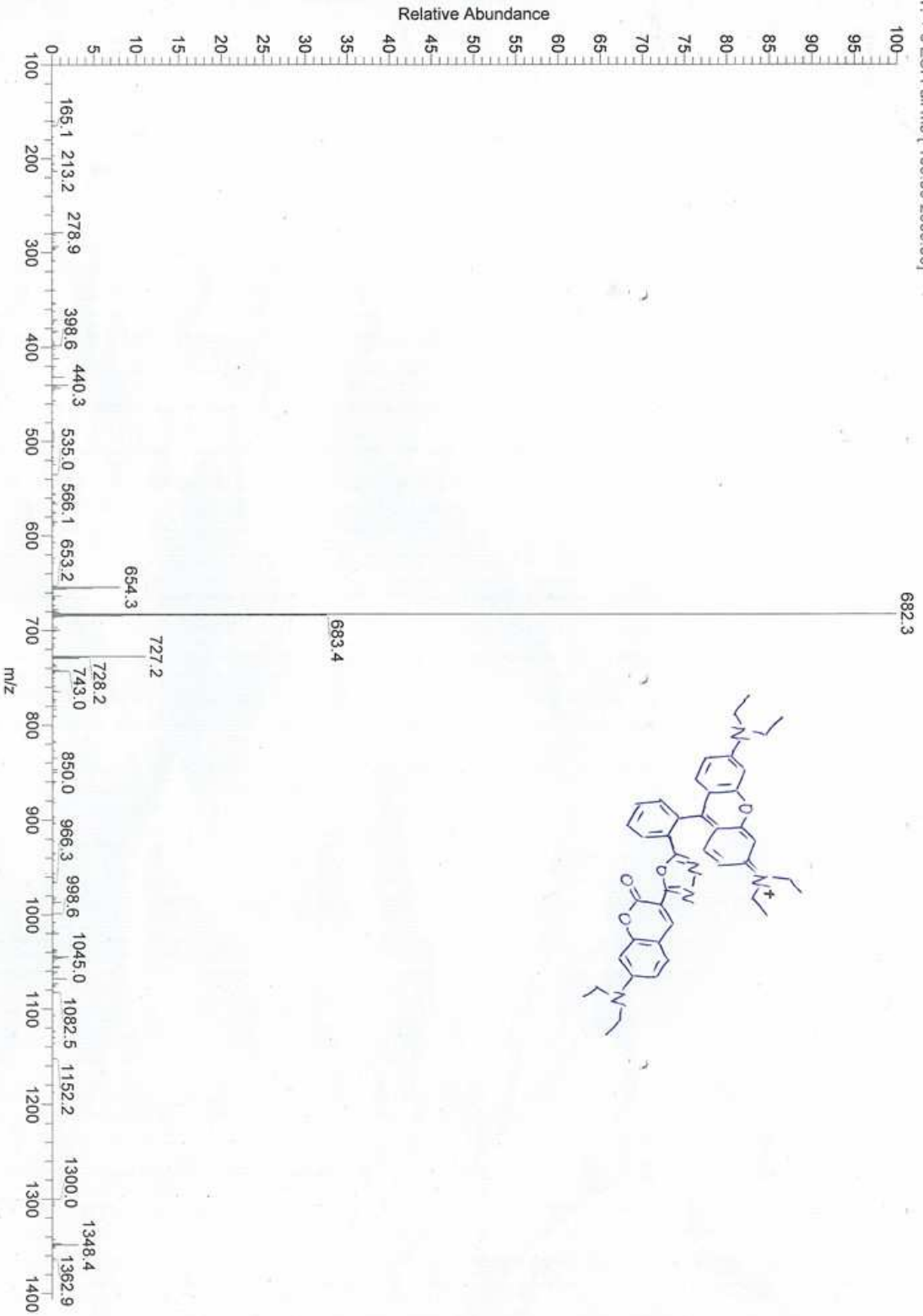
gwj/c13  
 exp2 s2pu1  
 SAMPLE 4 2012 temp not used  
 date Jun 2012 gain 36  
 solvent CDCl3 exp hst 0  
 file 20141\_4 hst 0  
 ACQUISITION 20141\_4 hst 0  
 SW 1.199 kHz 20.800  
 at 60368 60368 MHz  
 np 14000 11 n  
 fb 14000 11 n  
 bs 16 n  
 d1 1.000 dp y  
 nt 20000 hs  
 ct 20000 hs  
 TRANSMITTER R0000  
 tn C13 fn not used  
 sffq 100.584 sp DISPLAY -1364.0  
 tof 1546.0 mp 21146.3  
 lwr 58 FT1 9278.1  
 pw 6.400 FT2 4744.1  
 DECOUPLER HI FT3 -227.3  
 dof 0 LP  
 dm YYY PLOT 250  
 dms V WC SC 0  
 dpr 33 VS 197  
 dar 10582 LH 4  
 nm ph

<sup>13</sup>C NMR spectra of CR

C:\Xcalibur\data\gyf-120528-682

05/28/2012 11:16:28 AM

gyf-120528-682 #18 RT: 0.49 AV: 1 SB: 2 0.06-0.08 NL: 2.86E7  
T: + c ESI Full ms [ 100.00-2000.00]



MS spectra of CR-P