

Supporting Information

Legends of figures:

Figure S1:

Fragmentation spectra of peptide 14-18 with mass increment of 289.0 Da (panel A) and 309.0 Da (panel B).

Figure S2:

LC-MS/MS analysis of GST P1-1 adducts with mass shift of +339.0 Da. Panel A: ion traces of peptide 45-54 with mass increase of 339.0 Da (2+, m/z 709.77). Incubations of DF (1), 5-OH-DF (2), 4'-OH-DF (3), DF + 5mM GSH (4) and DF + 5 mM ascorbic acid (5) are shown. Panel B: MS/MS analysis of the doubly charged peptide 45-54 adduct of m/z 709.77 from the 5-OH-DF sample.

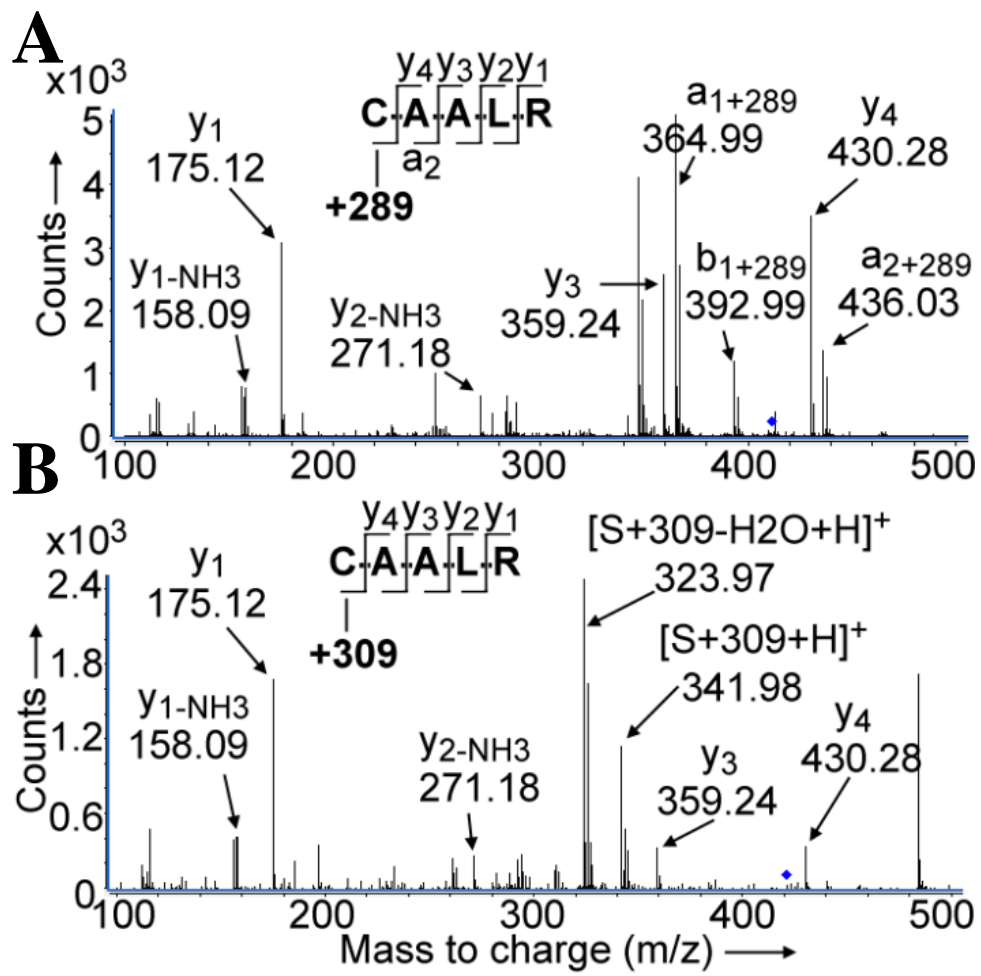


Figure S1

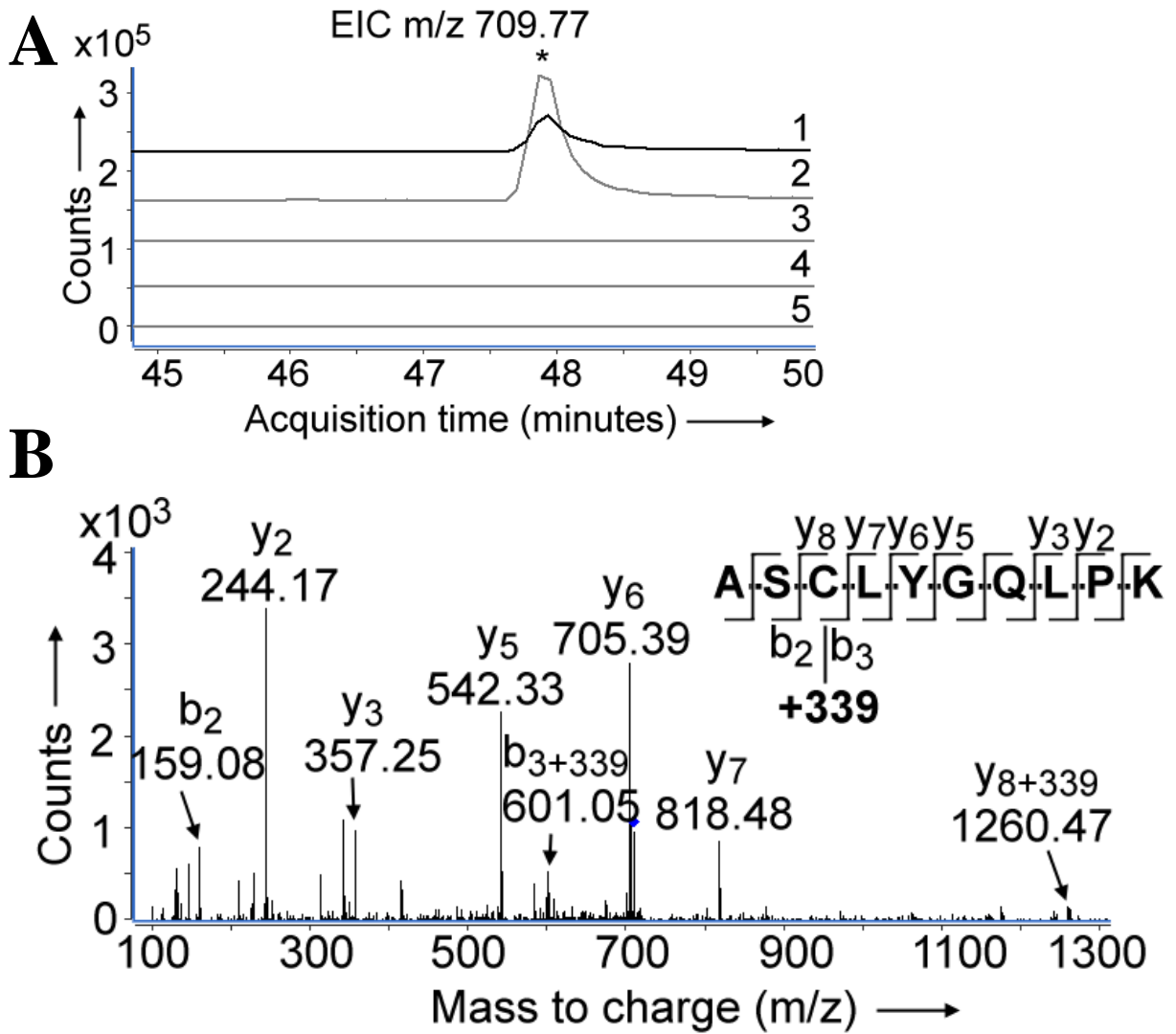


Figure S2