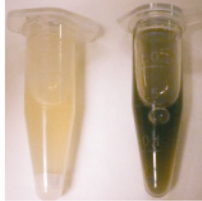
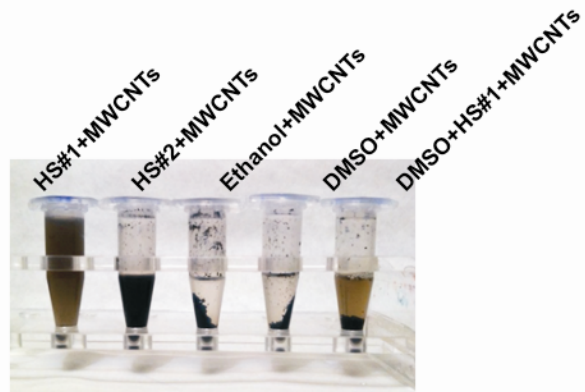


# A MWCNTs stability in sera

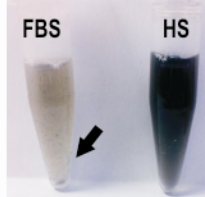
HS +  
HS MWCNTs



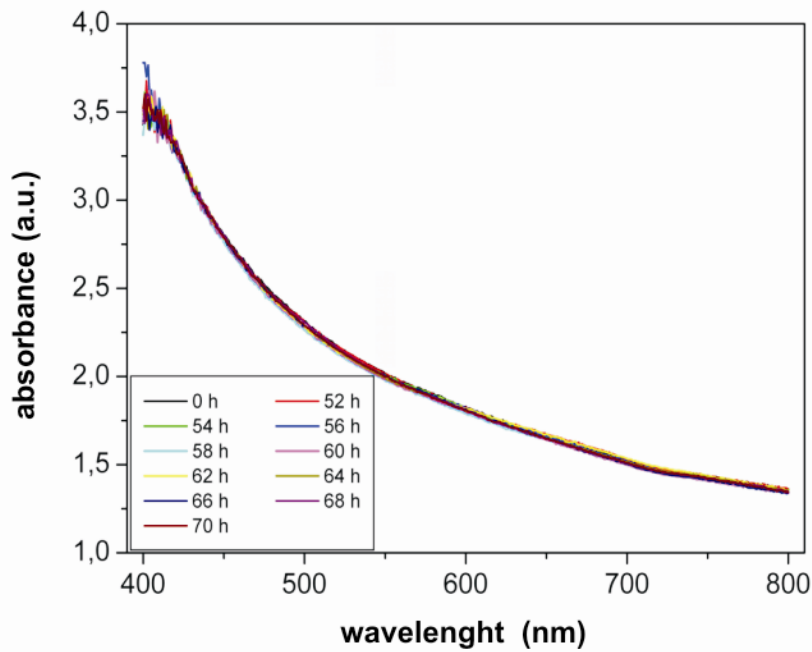
MWCNT resuspension in different dispersants



MWCNTs in sera



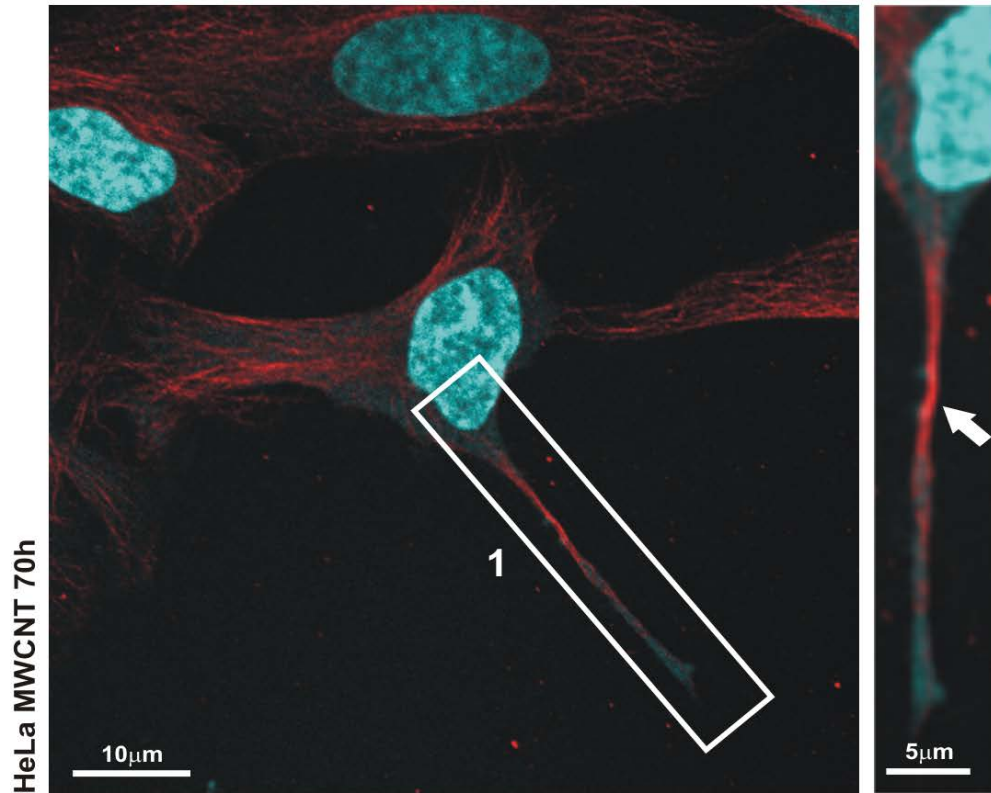
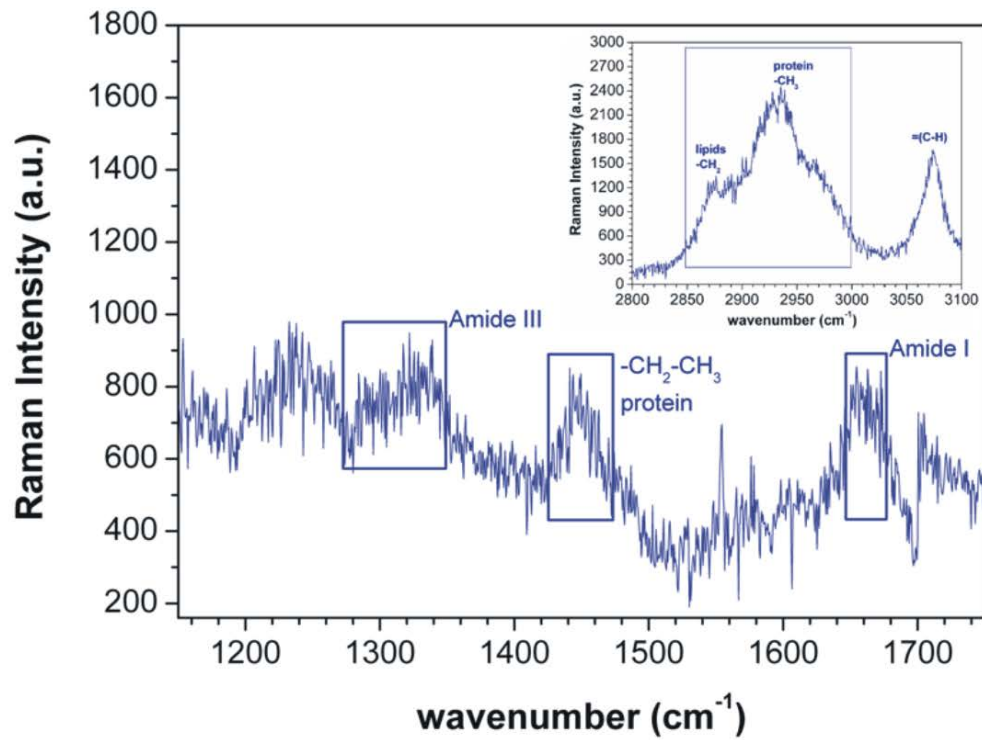
# B

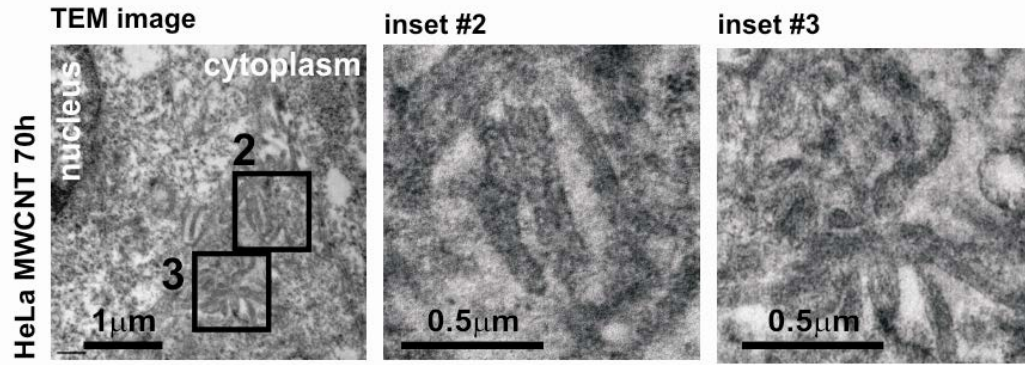
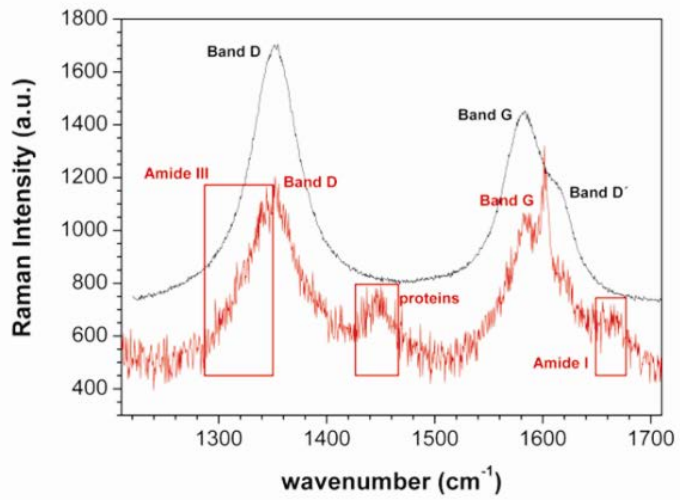
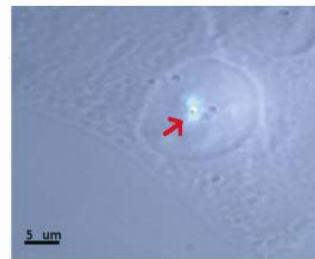


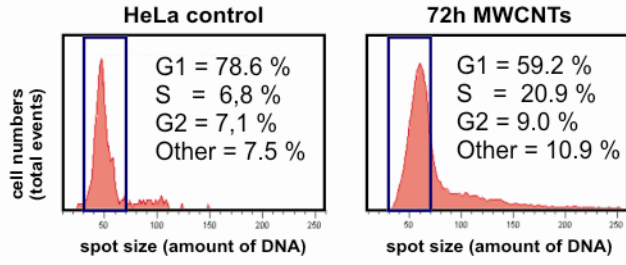
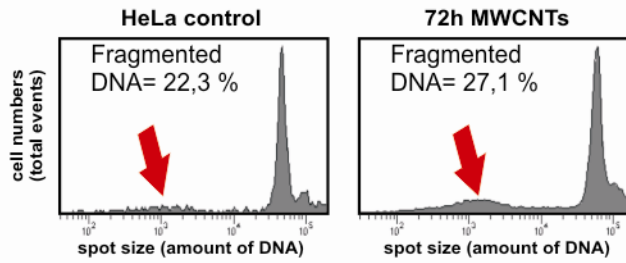
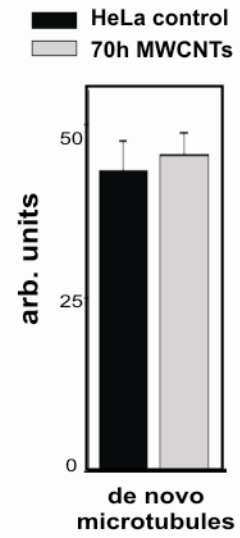
**A**

nuclear DNA (emission 425-475) / microtubules

inset #1

**B**

**A****B****C**

**A****cell cycle analysis****cell death and DNA fragmentation****B**

**A** comparison of microtubule stabilization by MWCNTs and Taxol

