

## **Supporting information for the manuscript - es-2012-00510r**

### **Low $\delta^{18}\text{O}$ values of nitrate produced from nitrification in temperate forest soils**

Yunting Fang<sup>1,2</sup>, Keisuke Koba<sup>1\*</sup>, Akiko Makabe<sup>1</sup>, Feifei Zhu<sup>1,3</sup>, Shaoyan Fan<sup>1</sup>,  
Xueyan Liu<sup>1</sup>, Muneoki Yoh<sup>1</sup>

<sup>1</sup> Tokyo University of Agriculture and Technology, Tokyo 183-8509, Japan

<sup>2</sup> State Key Laboratory of Forest and Soil Ecology, Institute of Applied Ecology,  
Chinese Academy of Sciences, Shenyang 110164, China

<sup>3</sup> Key Laboratory of Vegetation Restoration and Management of Degraded  
Ecosystems, South China Botanical Garden, Chinese Academy of Sciences,  
Guangzhou 510650, China

#### **\*Corresponding author: Keisuke Koba**

Faculty of Agriculture, Tokyo University of Agriculture and Technology, Saiwai-cho  
3-5-8, Fuchu, Tokyo 1838509, Japan

E-mail: keikoba@cc.tuat.ac.jp

Tel/Fax: +81 42 367 5951; Fax: +81 42 367 5900

Content: Figure SI 1, Figure SI 2.

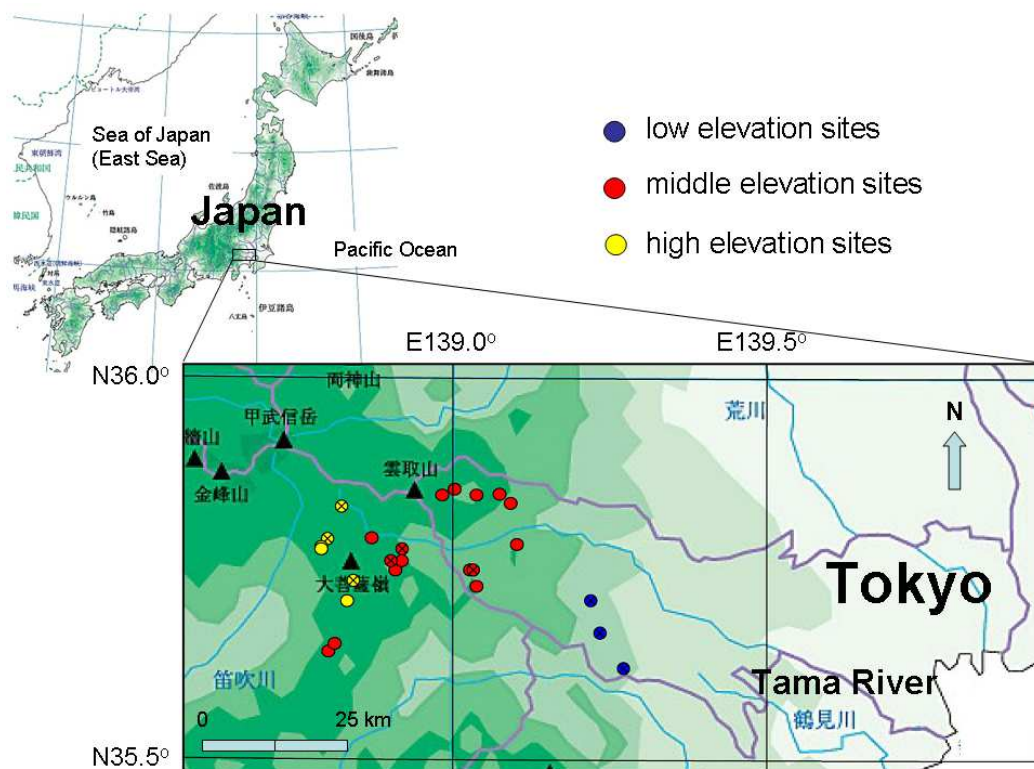


Figure SI 1 Map showing sampling locations for soil and stream water. The circles denote stream water sampling sites, and the circles with crosses denote the sites where both stream waters and soils were collected. Black triangles denote mountains (named in Japanese). The different colors on the base map show increasing elevation from light to heavy.

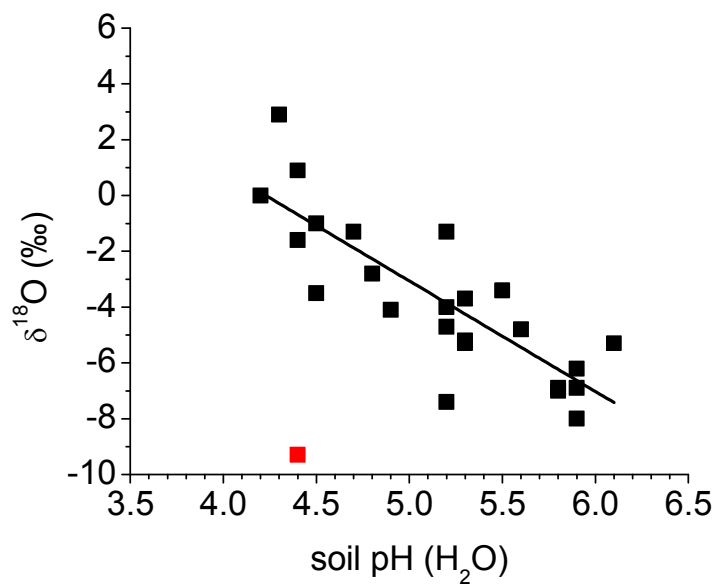


Figure SI 2 Correlation of soil pH and the  $\delta^{18}\text{O}$  value of  $\text{NO}_3^-$  newly produced from nitrification in forest soils across the elevation gradient.  $y = 16.76 - 3.79x$ ,  $R^2 = 0.67$ ,  $P < 0.001$ ,  $n = 26$ . The point in red was excluded from regression analysis.