

SUPPORTING INFORMATION

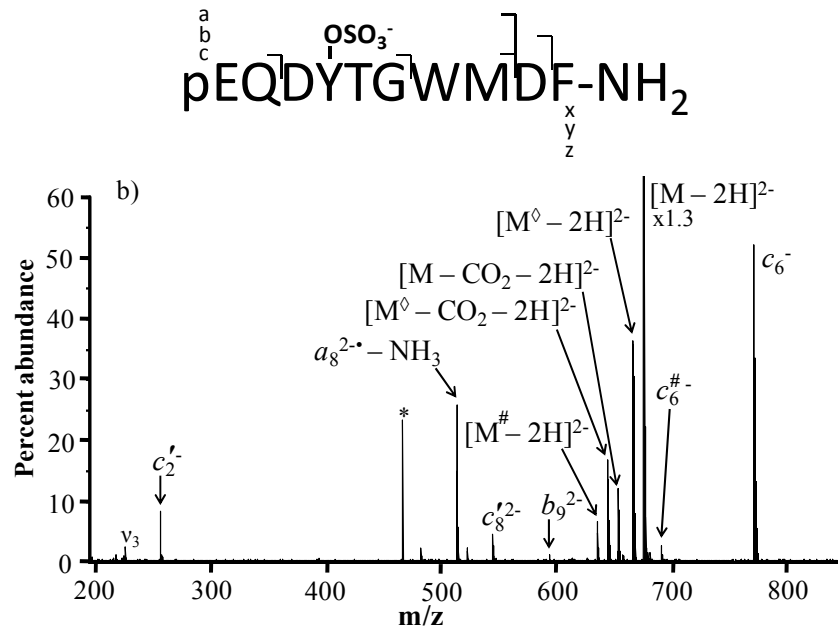
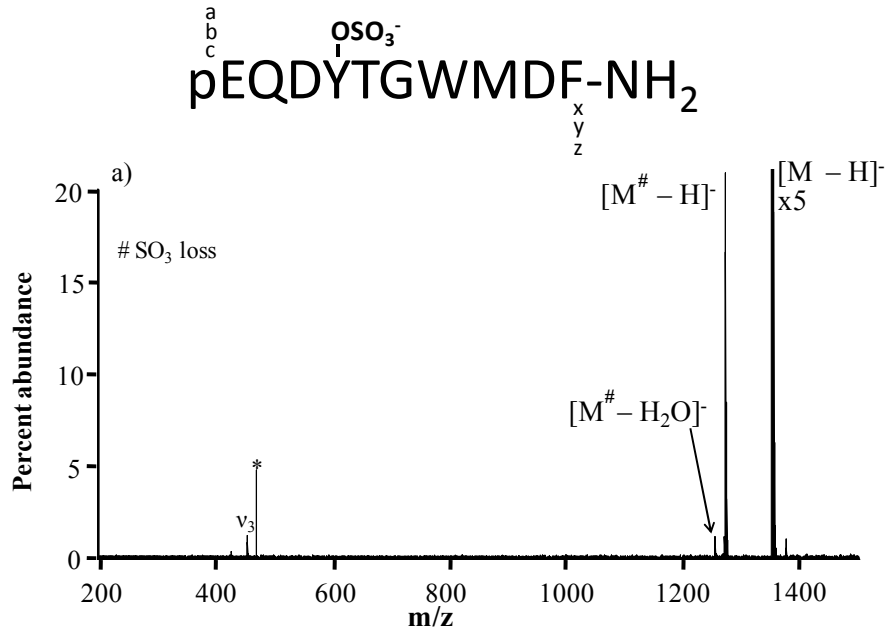
Characterization of *O*-Sulfopeptides by Negative Ion Mode Tandem Mass Spectrometry: Superior Performance of Negative Ion Electron Capture Dissociation

Katherine E. Hersberger[†], Kristina Håkansson^{*}

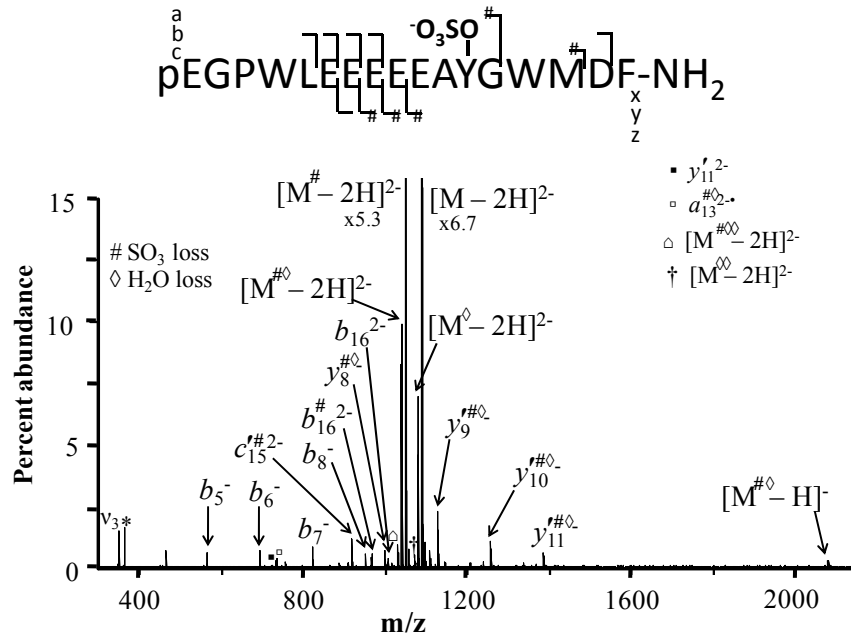
Department of Chemistry, University of Michigan, 930 North University Avenue, Ann Arbor, Michigan 48109-1055, USA

[†] Current address: Department of Chemistry, Wayne State University, 5101 Cass Avenue, Detroit, MI 48202-3489

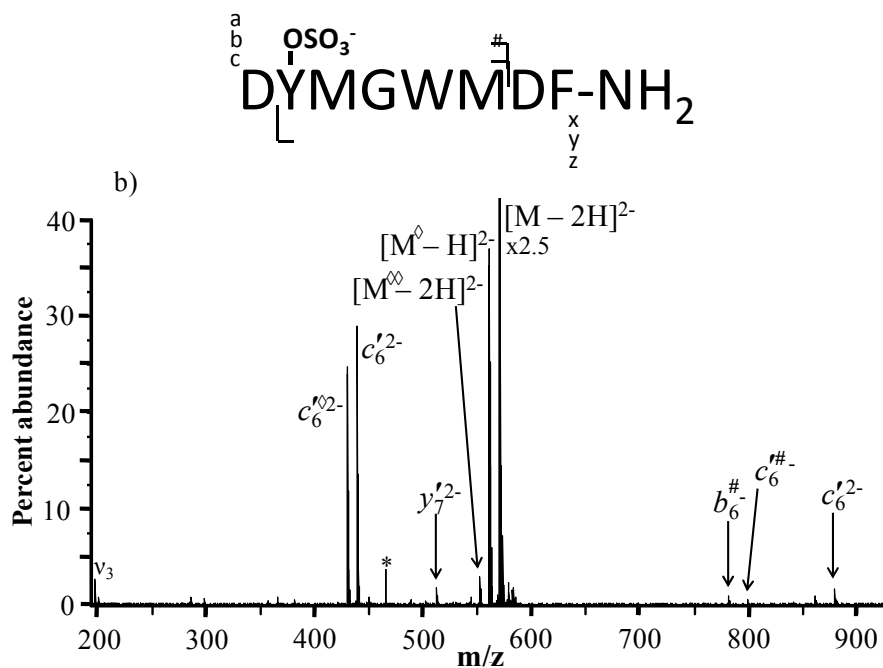
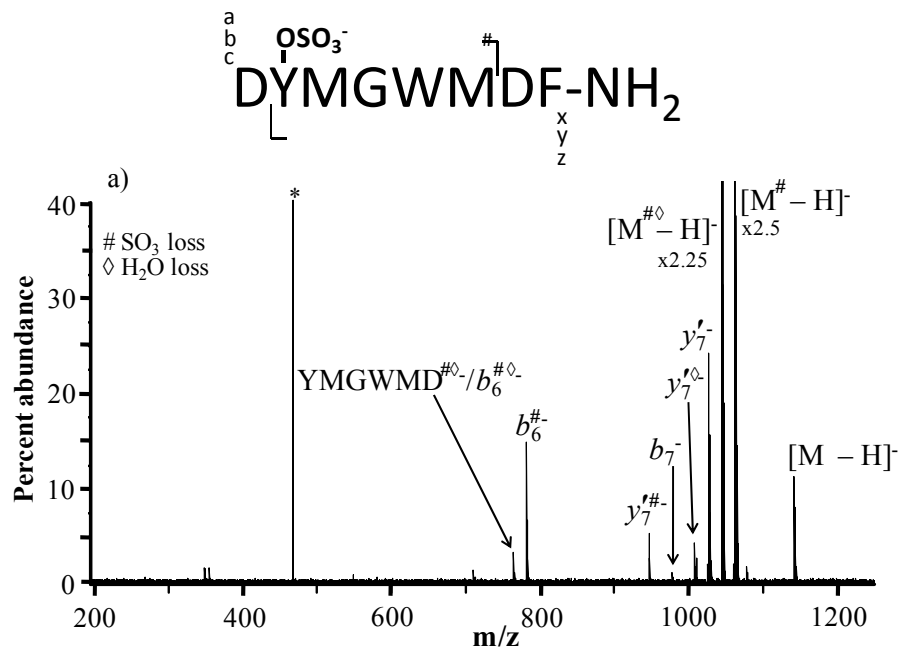
**Corresponding author: e-mail: kicki@umich.edu; phone (734) 615-0570; fax: (734) 647-4865*



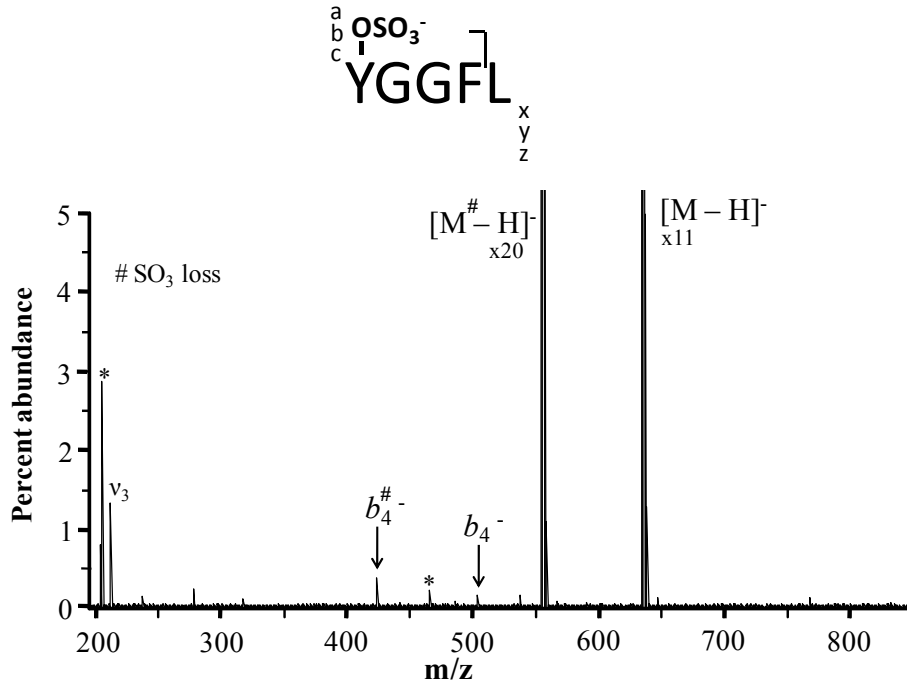
Supplemental Figure S1. Negative ion mode CAD of singly- (a) and doubly-deprotonated (b) sulfonated caerulein. Sulfonate loss is indicated by # while electronic noise is indicated by *.



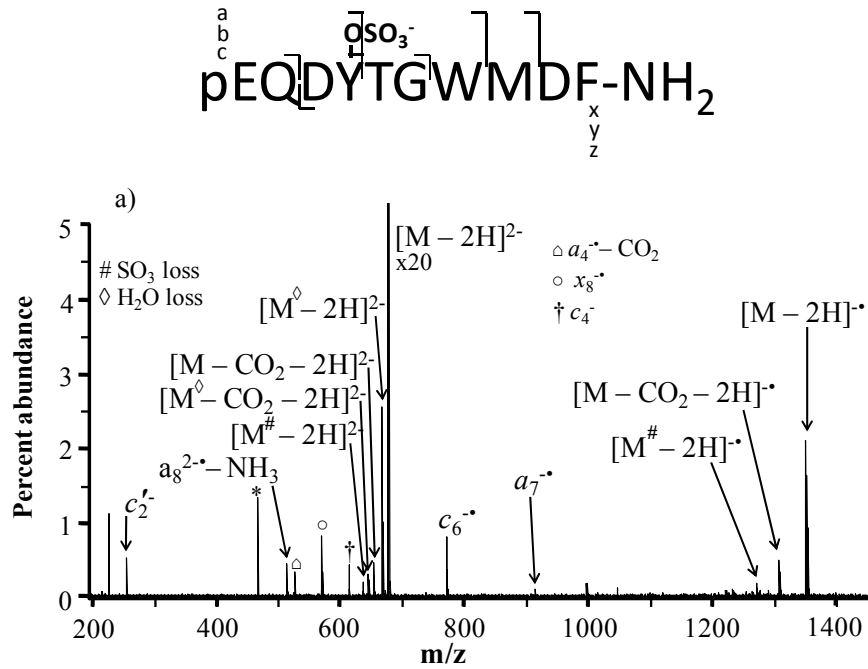
Supplemental Figure S2. Negative ion mode CAD of doubly-deprotonated sulfonated human gastrin II. Sulfonate loss and water loss are indicated by # and \diamond , respectively, while electronic noise is indicated by *.

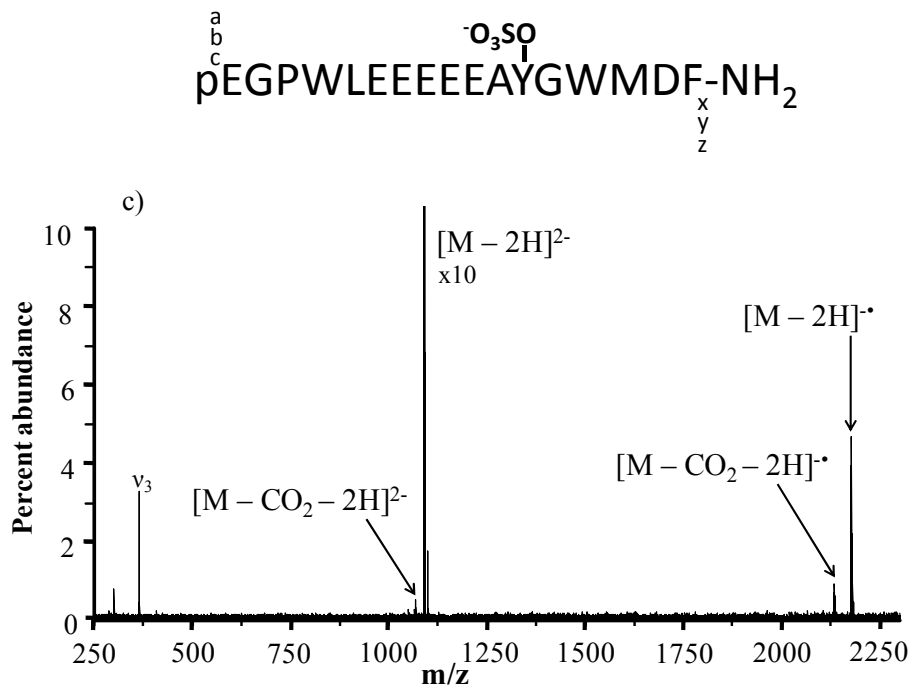
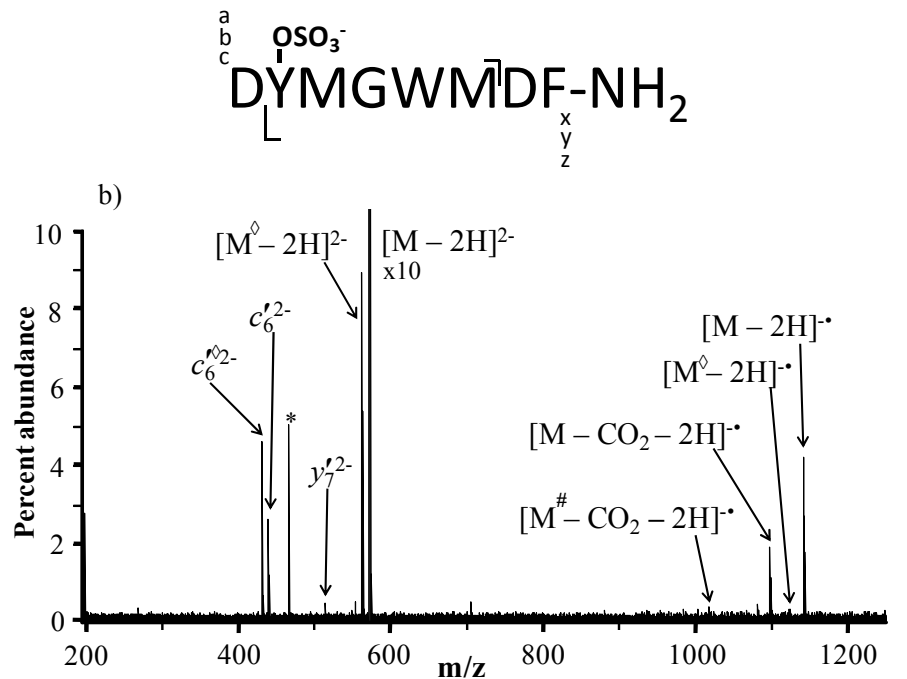


Supplemental Figure S3. Negative ion mode CAD of singly- (a) and doubly-deprotonated (b) sulfonated cholecystinin (CCKS). Sulfonate loss and water loss are indicated by # and \diamond , respectively, while electronic noise is indicated by *.

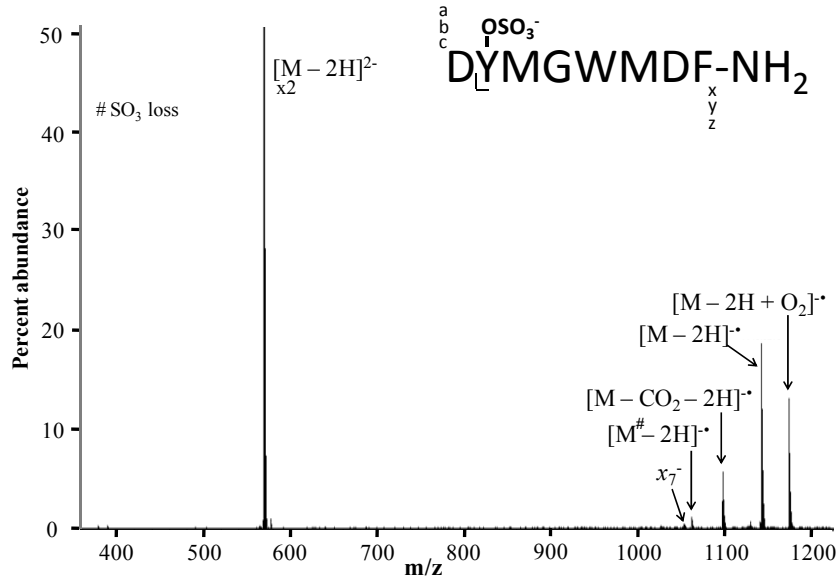


Supplemental Figure S4. Negative ion mode CAD of singly-deprotonated sulfonated leucine-enkephalin. Sulfonate loss is indicated by # while electronic noise is indicated by *.



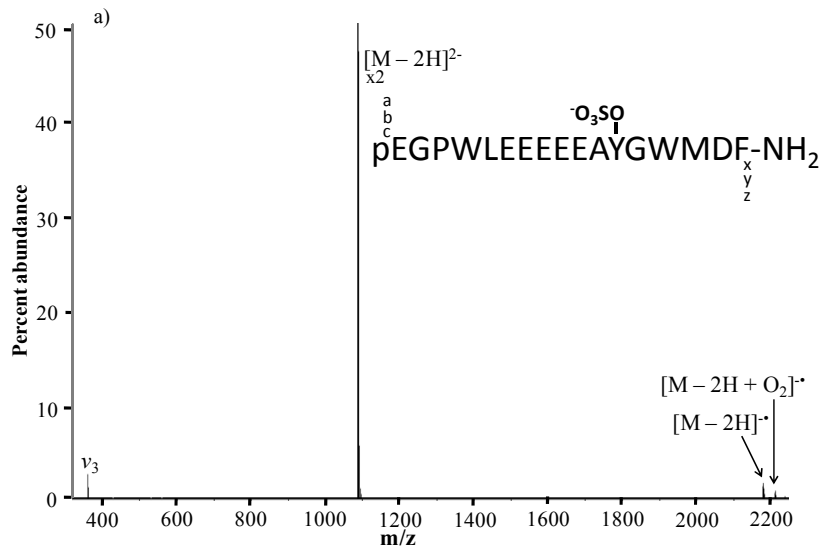


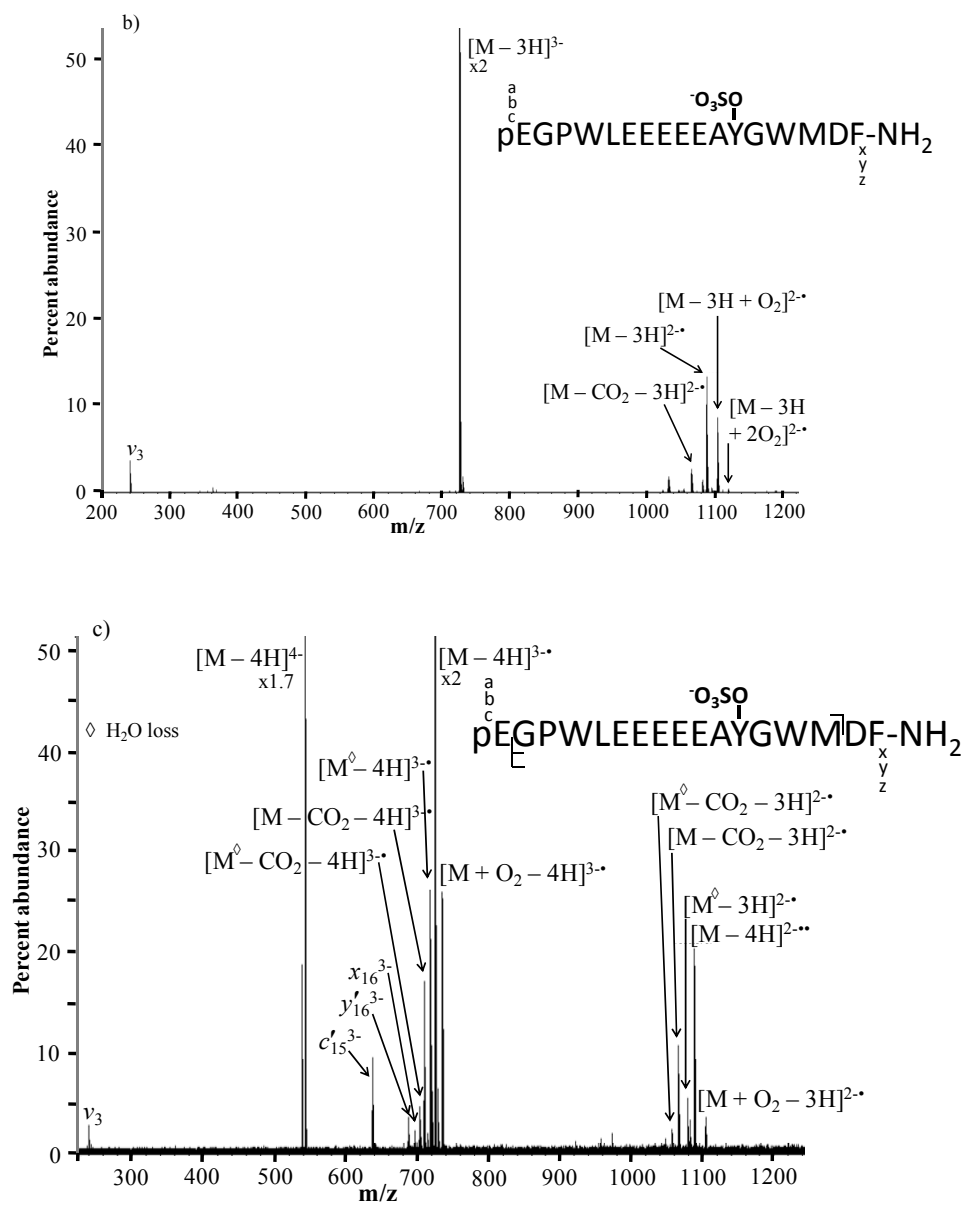
Supplemental Figure S5. EDD of doubly-deprotonated caerulein (a), CCKS (b), and gastrin II (c). Sulfonate loss and water loss are indicated by # and \diamond , respectively, while electronic noise is indicated by *.



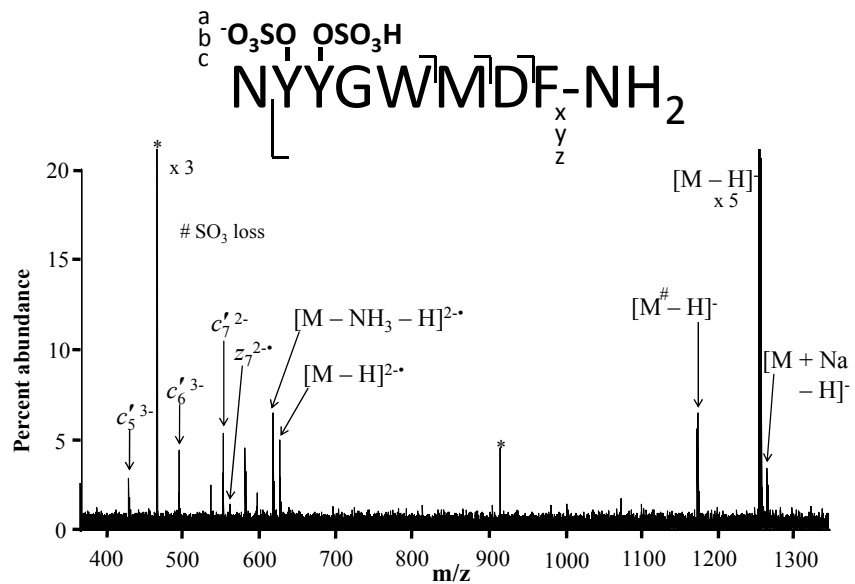
Supplemental Figure S6. NETD of doubly-deprotonated sulfonated cholecystinin (CCKS).

Sulfonate loss is indicated by #.





Supplemental Figure S7. NETD of doubly- (a), triply- (b) and quadruply-deprotonated (c) sulfonated human gastrin II. No sulfonate loss was observed in any of these three spectra but sequence coverage is low. Water loss is indicated by \diamond .



Supplemental Figure S8. niECD of singly-deprotonated sulfonated cionin. Sulfonate loss is indicated by #. Electronic noise is indicated by *. Charge location is arbitrarily assigned to the sulfonate residue.