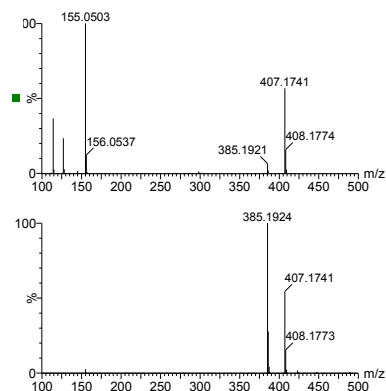


Supporting Information for: “Analysis of synthetic cannabinoids using high-resolution mass spectrometry and mass defect filtering: Implications for non-targeted screening of designer drugs”

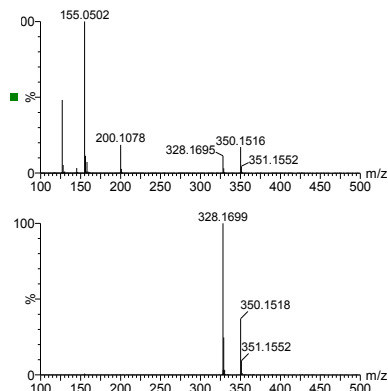
Megan Grabenauer, Wojciech L. Krol, Jenny L. Wiley, Brian F. Thomas

Low CE, bottom, and high CE, top, mass spectra of indole derived synthetic cannabinoid standards.

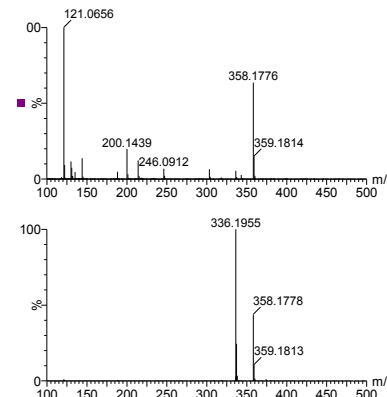
JWH-200



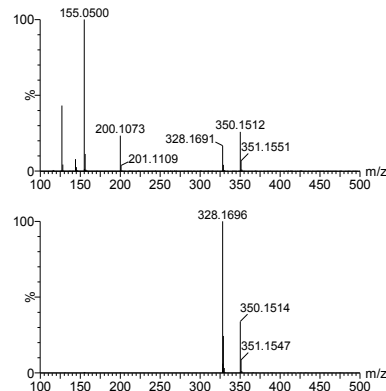
JWH-015



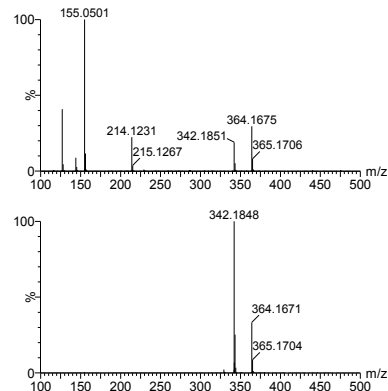
JWH-250



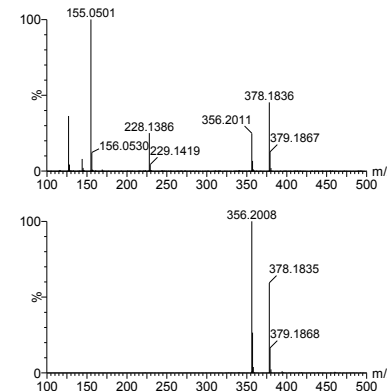
JWH-073



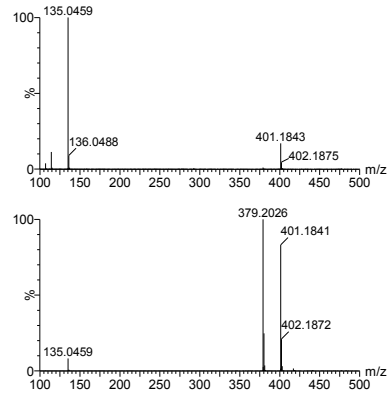
JWH-018



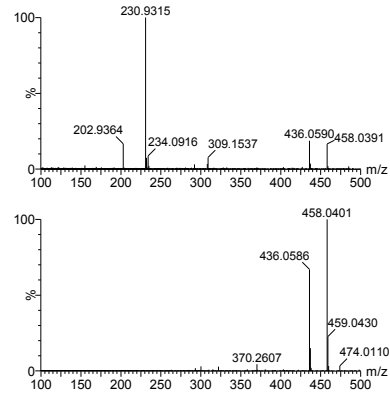
JWH-019



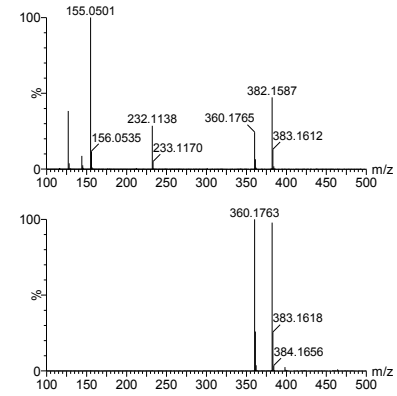
WIN 48,098



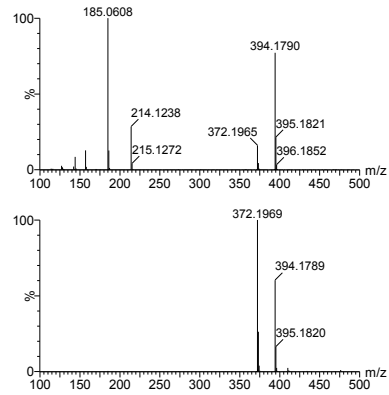
AM-694



AM-2201



JWH-081



JWH-122

