

## Supporting Information Available

### Hierarchically Driven IrO<sub>2</sub> Nanowire Electrocatalysts for Direct Sensing of Biomolecules

Jun Ho Shim,<sup>†,‡,⊥</sup> Yumin Lee,<sup>†,⊥</sup> Minkyung Kang,<sup>†</sup> Jaeyeon Lee,<sup>†</sup> Jeong Min Baik,<sup>§</sup> Youngmi Lee,<sup>†</sup> Chongmok Lee,<sup>†</sup> and Myung Hwa Kim<sup>\*,†</sup>

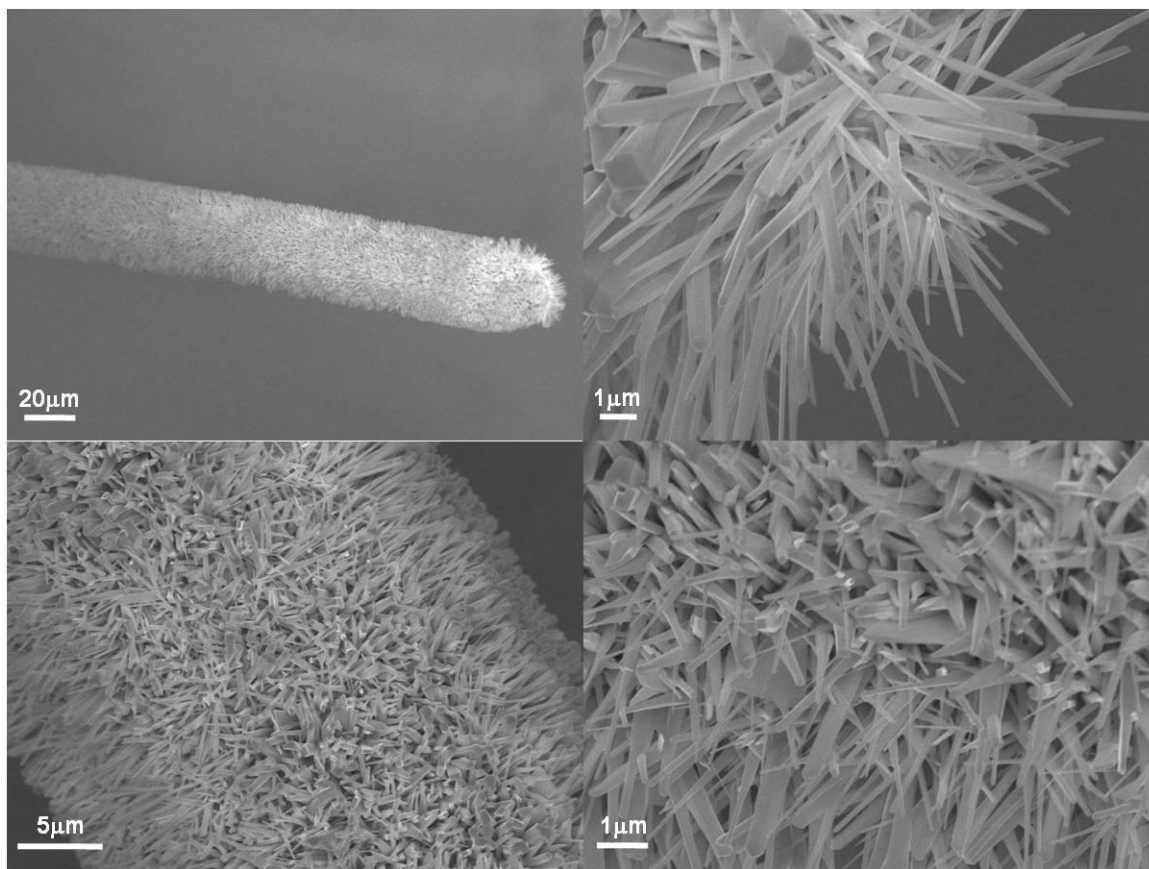
<sup>†</sup>Department of Chemistry & Nano Science, Ewha Womans University, Seoul 120-750, Korea

<sup>‡</sup>Department of Chemistry, Daegu University, Gyeongsan 712-714, Korea.

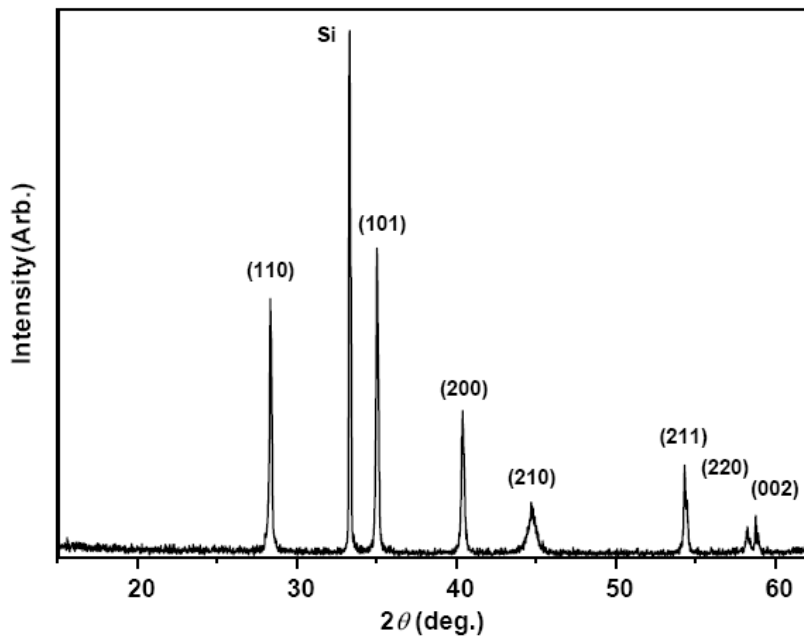
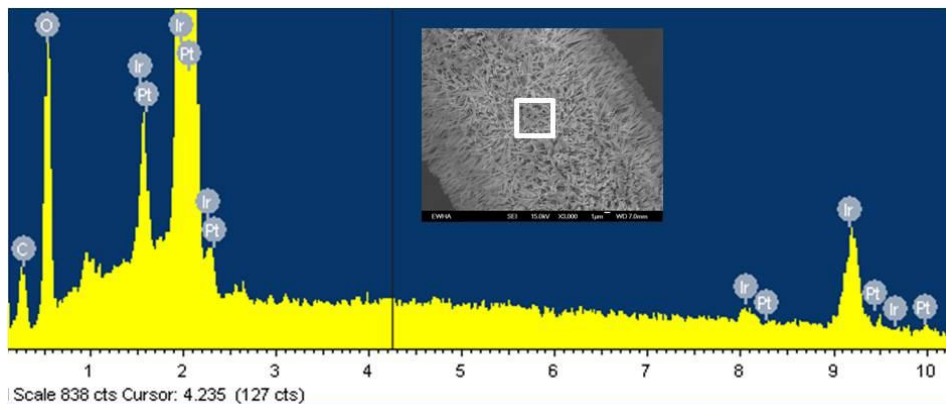
<sup>§</sup>School of Mechanical and Advanced Materials Engineering, Ulsan National Institute of Science and Technology (UNIST), Ulsan, Korea

<sup>⊥</sup>Authors are equally contributed to this work.

\*To whom all correspondence should be addressed: [myungkim@ewha.ac.kr](mailto:myungkim@ewha.ac.kr)



**Figure S1.** Additional SEM images with different magnifications showing hierarchically grown IrO<sub>2</sub> nanowires on a 25-μm Pt microwire.

**A****B**

**Figure S2. A.** X-ray diffraction (Rigaku diffractometer with Ni filtered  $\text{Cu}_{K\alpha}$  radiation,  $\lambda = 0.15418$  nm,  $25^\circ\text{C}$ ) pattern of as grown  $\text{IrO}_2$  nanowires on a Pt microwire. Note that the peak of the angle of  $33.2^\circ$  is related to a Si wafer in Fig S2 (A). **B.** EDX spectrum taken from selected area of  $\text{IrO}_2$  nanowires on a Pt microwire.