

Supporting Information

Adhesion of Polyelectrolyte Multilayers – Sealing and Transfer of Microchamber Arrays

*Maxim V. Kiryukhin,*¹ Shu Mei Man,¹ Armine Tonoyan,² Hong Yee Low,¹ Gleb B. Sukhorukov³*

¹Institute of Materials Research and Engineering, Agency for Science, Technology and Research
(A*STAR), 3 Research link, 117602, Singapore

²Department of Chemistry, M.V. Lomonosov Moscow State University, Moscow 119992, Russia

³School of Engineering and Material Science, Queen Mary University of London, Mile End
Road, London, E1 4NS, UK

*Corresponding author: Fax: (+65) 6872 7528 Tel: (+65) 6874 8252 E-mail: kiryukhin-
m@imre.a-star.edu.sg

Supporting Information

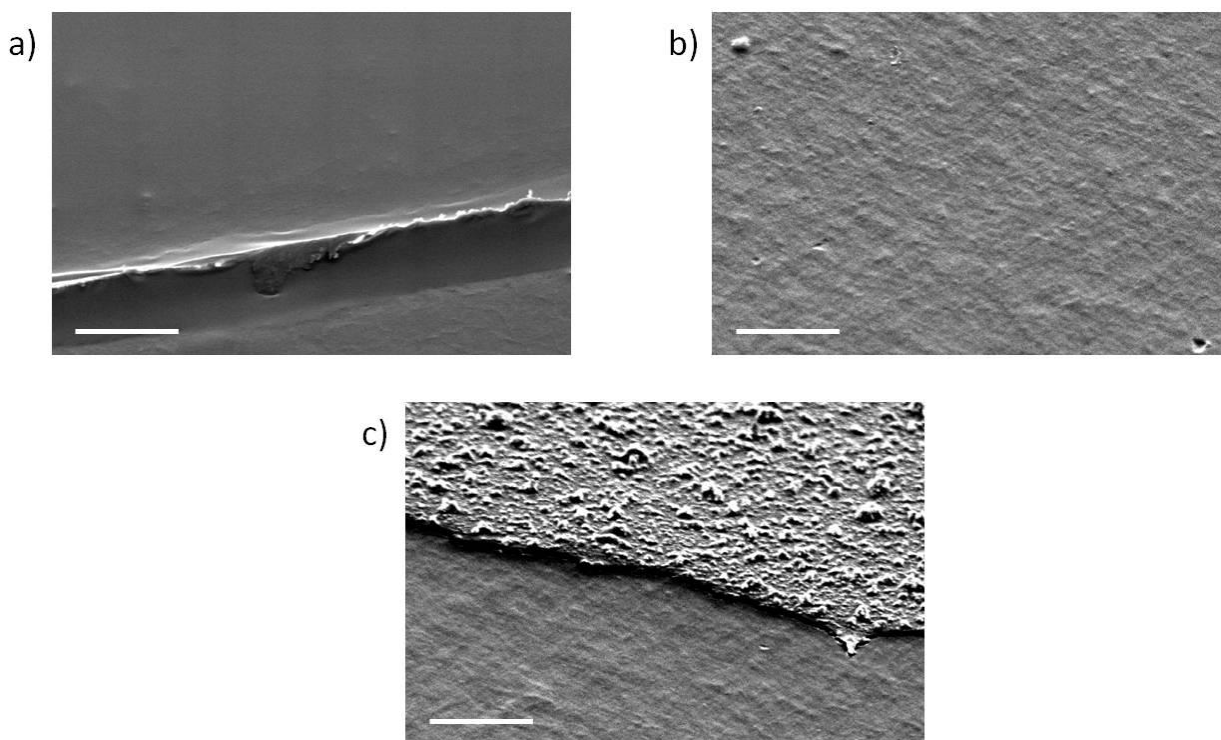


Figure S1. Scanning Electron Microscope tilted (45°) images of broken surfaces: a) $\text{SiO}_2 / (\text{PSS-PDADMA})_8 - (\text{PAH-PSS})_{40} / \text{PMMA}$ (bottom); b) $\text{SiO}_2 / (\text{PSS-PDADMA})_8 - (\text{PAH-PSS})_{40} / \text{PMMA}$ (top); c) $\text{PMMA} - (\text{PAH-PSS})_{40}$. All scale bars – $10 \mu\text{m}$.

The image of bottom substrate (a) demonstrates an edge of the very smooth reverse surface of the $(\text{PAH-PSS})_{40}$ multilayer adhered to the $(\text{PSS-PDADMA})_8$ multilayer. The image of top substrate (b) is typical surface of bare PMMA film. Compare it with the image of the edge of $(\text{PAH-PSS})_{40}$ multilayer assembled on PMMA film (c). The surface of clear PMMA film has the very same morphology as in (b), the outer surface of the $(\text{PAH-PSS})_{40}$ multilayer is much more rough than the reverse surface seen at (a).