

**Supporting Information for**

# Dual-emission Fluorescent Silica Nanoparticle-based Probe for Rapid and Ultrasensitive Detection of Cu<sup>2+</sup>

*Chenghua Zong, Kelong Ai, Guo Zhang, Hongwei Li and Lehui Lu\**

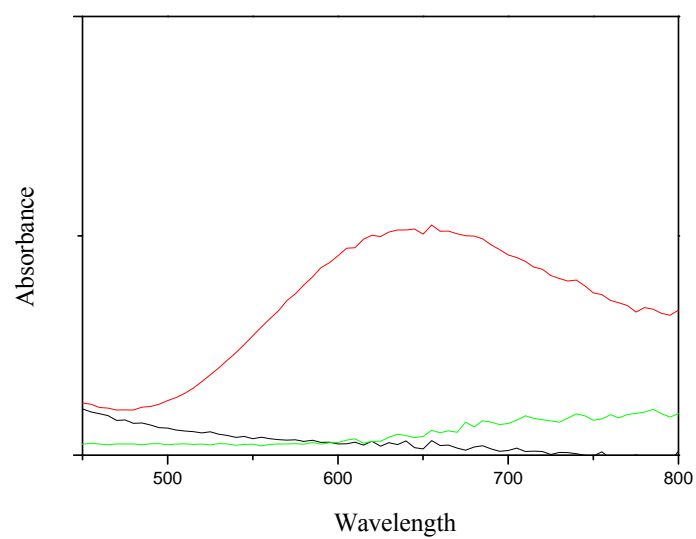
\*State Key Laboratory of Electroanalytical Chemistry, Changchun Institute of Applied Chemistry

Chinese Academy of Sciences, 5625 Renmin Street, Changchun, 130022, P. R. China

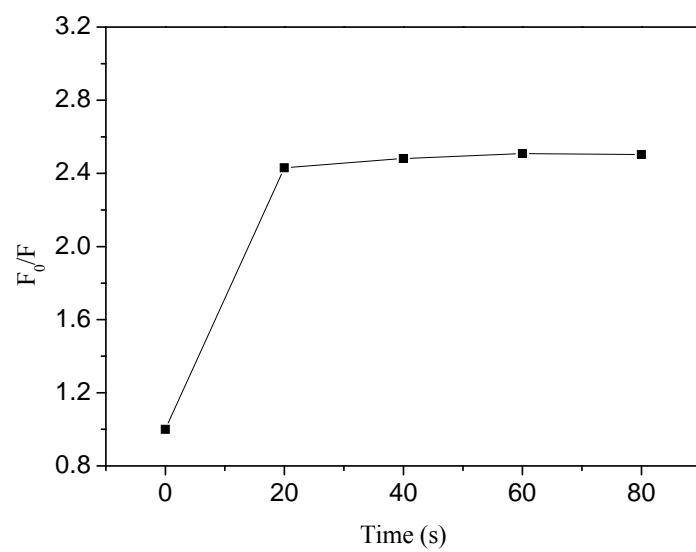
E-mail: [lehuilu@ciac.jl.cn](mailto:lehuilu@ciac.jl.cn)

\*Corresponding author: E-mail address: [lehuilu@ciac.jl.cn](mailto:lehuilu@ciac.jl.cn); Tel: +86-43185262418; Fax:

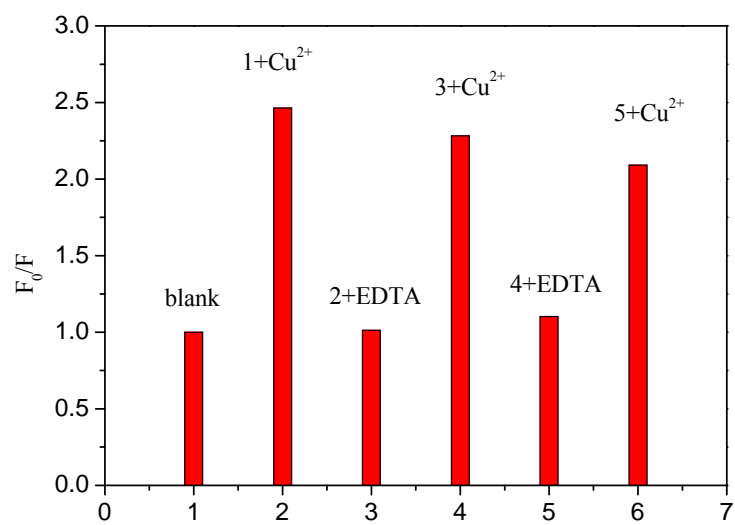
+86-43185262406



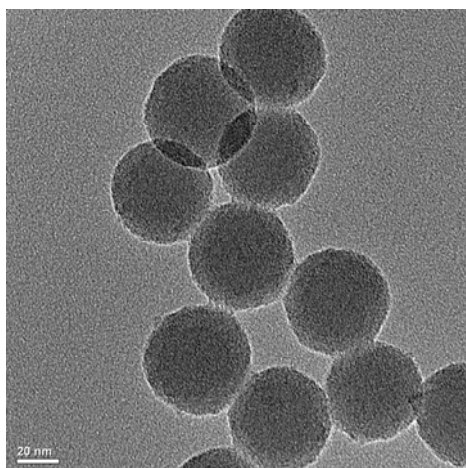
**Figure S1.** Absorption spectra of Cu<sup>2+</sup> complex to match with the emission band of RBITC (580 nm). UV-vis spectra of 0.3 mM Cu<sup>2+</sup> (green line), the polymeric polyethyleneimine (black line), in ethanol/water (V/V = 2:1), and after the complexation of Cu<sup>2+</sup> with the polymeric polyethyleneimine (red line).



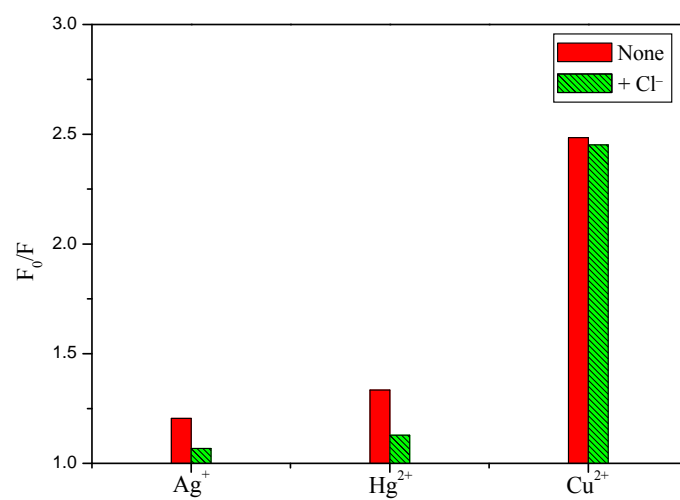
**Figure S2.** Plot of  $F_0/F$  against time in the presence of  $3 \mu\text{M Cu}^{2+}$ .



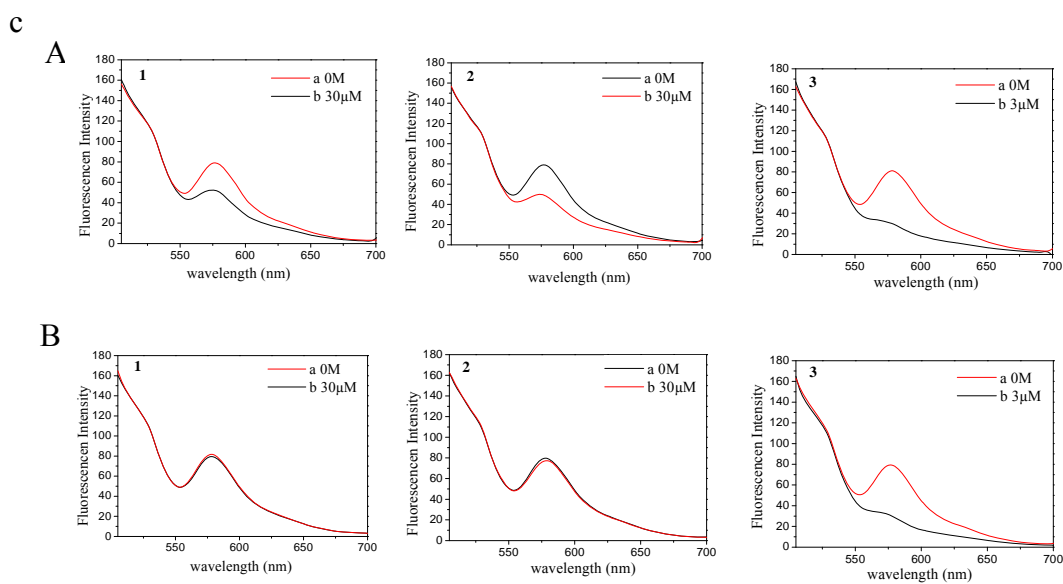
**Figure S3.** Reversibility of the dual-emission fluorescent silica nanoparticle-based nanoprobe.



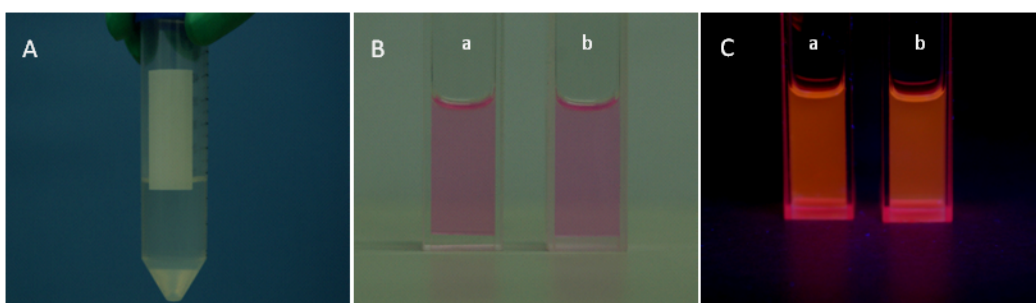
**Figure S4.** TEM image of the RBITC/PEI/FITC–doped silica nanoparticles after repeated use.



**Figure S5.** Fluorescence changes upon addition of  $Ag^+$ ,  $Hg^{2+}$  and  $Cu^{2+}$  (the concentrations of the detected cations were 3  $\mu$ M).

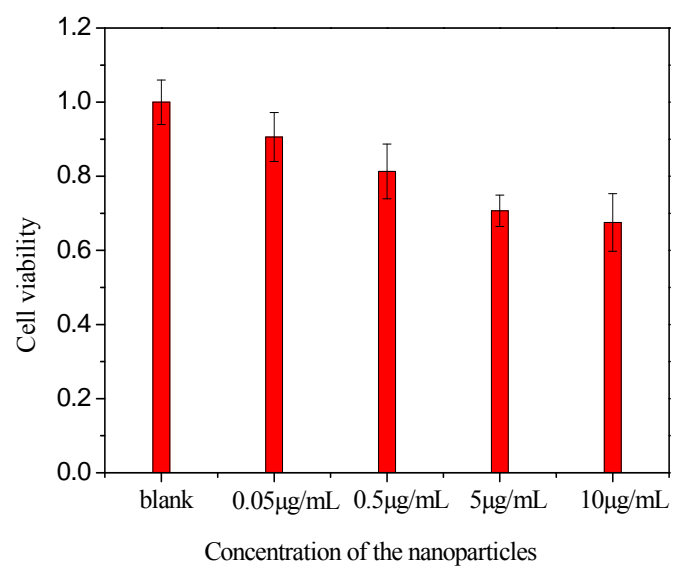


**Figure S6.** Fluorescence changes upon addition of different concentrations of (1)  $\text{Co}^{2+}$  (0,  $30\mu\text{M}$ ), (2)  $\text{Ni}^{2+}$  (0,  $30\mu\text{M}$ ), (3)  $\text{Cu}^{2+}$  (0,  $3\mu\text{M}$ ), without (A) and with (B) the addition of  $\text{HNO}_3$  (0.4 mM).

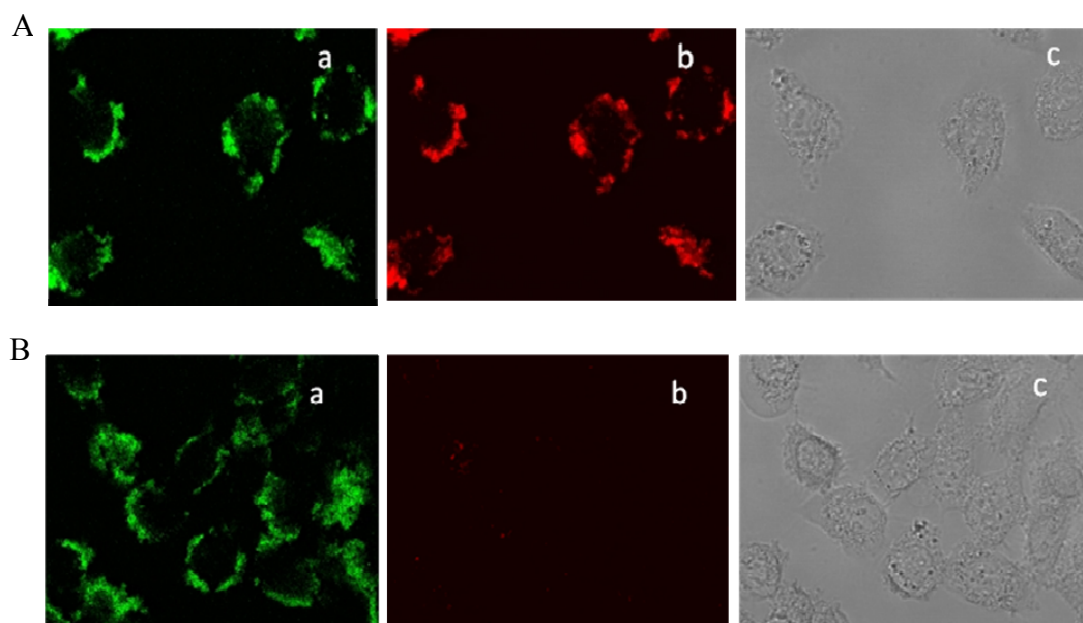


**Figure S7.** A) Photographs of the industrial waste water, B) visual color of the nanoparticles with addition of a) deionized water b) industrial waste water and C) the corresponding visual fluorescence color.





**Figure S8.** Cell viability of HeLa cells incubated with various concentrations of the dual-emission fluorescent silica nanoparticles.



**Figure S9.** Confocal fluorescence microscopy images of HeLa cells incubated with the dual-emission fluorescent silica nanoprobe (A) before and (B) after the addition of  $\text{Cu}^{2+}$  ( $4 \mu\text{M}$ ): (a) reference dye channel, (b) response dye channel, and (c) bright field image.