

Supplementary materials

Chemical Characterization and Quality Control of the TCM Mixtures Used in the Study

All the TCM mixtures were under careful quality control to assure their identity throughout all the experiments. Each TCM mixture was prepared in a single extraction and the dried extracts were well stored as the supply of test materials for animal experiments and chemical analysis.

Water extract powder of *salvia miltiorrhiza* (20 mg), *panax ginseng* (20 mg) and *shuanglong* formula (20 mg) were dissolved in 5 mL of water, respectively. The solutions were filtered through a 0.45 µm filter membrane and the filtrates were used as test solution. 4 µL of test solution was injected into the column in each run.

Chromatographic separation was performed on an Acquity UPLC BEH C₁₈ column (2.1×100 mm, 1.7 µm, Waters Corp., Milford, USA) using an ACQUITY™ UPLC system (Waters), equipped with a binary solvent delivery system, an autosampler, and a PDA detector. The column was maintained at 50 °C and eluted at a flow rate of 0.4 mL/min, using a mobile phase of (A) 0.1% (by volume) formic acid in water and (B) acetonitrile. The gradient program was optimized as follows: 0-4 min, 5% B to 5%B; 4-9 min, 5% B to 50% B; 9-19 min, 50% B to 90% B; 19-20 min, 90% B to 90% B; 20-22 min, 90% B to 5% B; 22-28 min, equilibration with 5% B. The column eluent was directly inducted into the mass spectrometer without split.

Mass spectrometry was performed on a Waters LCT Premier orthogonal accelerated time of flight mass spectrometer (Waters, Millford, MA) with an electrospray ionization source (ESI) operating in negative ion mode (W mode of operation). The capillary voltage and the cone voltage were set at 2200 V and 35 V, respectively. Nitrogen was used as the drying gas. The desolvation gas rate was set to 700 L/h at a temperature of 350 °C, and the cone gas rate was set at 40 L/h and the source temperature was set at 120 °C. The scan time and inter-scan delay were set to 0.2 s and 0.02 s, respectively. Data was collected in centroid mode from m/z 100 to m/z 1500 with a LockSpray frequency of 10 s, and data averaging over 10 scans. The total ion

chromatograms of test solutions prepared from selected TCM materials were shown in **Figure S1-S3**.

As a result, seventy seven compounds of *shuanglong* formula (SLF) were identified on the basis of retention time, m/z and available conference standards (shown in **Table S1**), among which twenty six compounds were from *salvia miltiorrhiza* (shown in **Table S2**) and fifty one compounds from *panax ginseng* (shown in **Table S3**). For the quality control, eighteen major components among the TCM mixture SLF were assayed with external standard calibrations, and the other components were estimated with their peak areas.

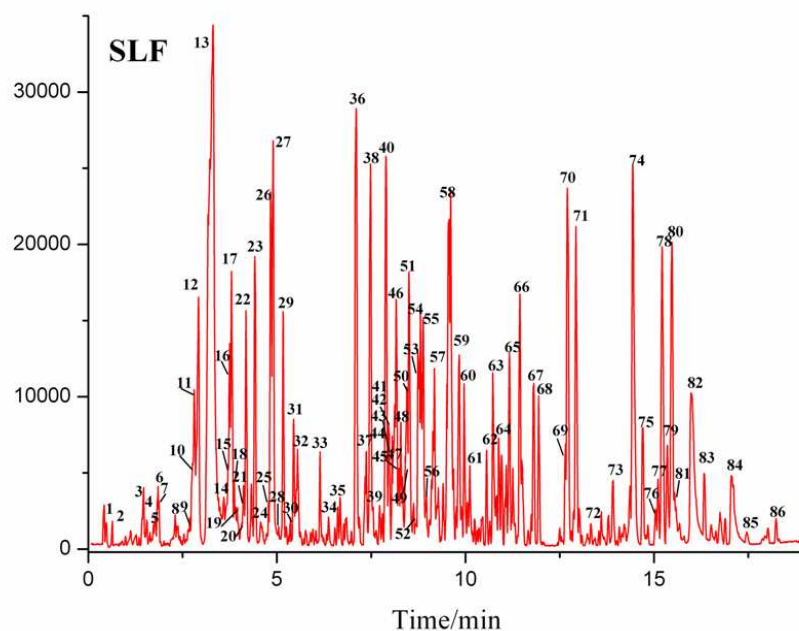


Figure S1 The total ion chromatogram of *shuanglong* formula (SLF) on UPLC/TOF MS

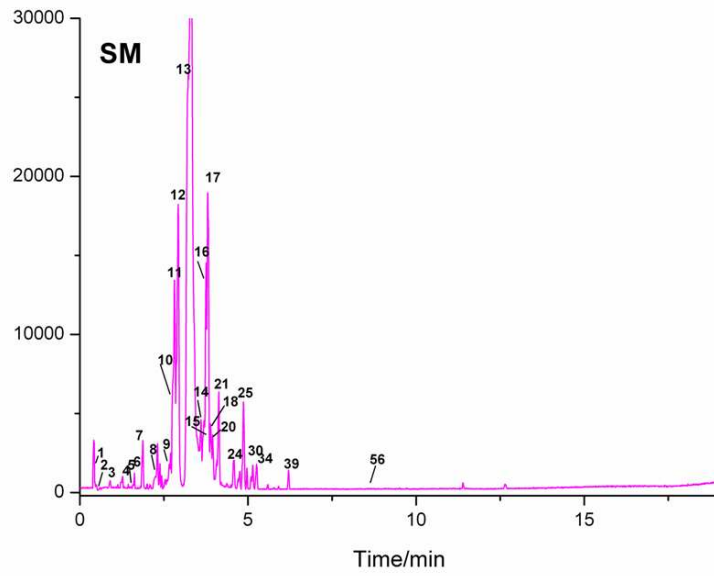


Figure S2 The total ion chromatogram of *salvia miltiorrhiza* (SM) on UPLC/TOF MS

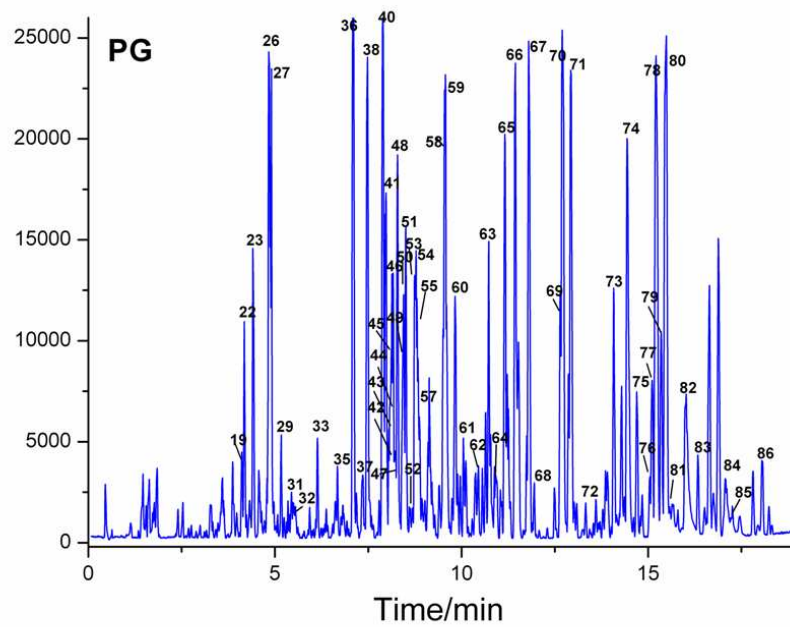


Figure S3 The total ion chromatogram of *panax ginseng* (PG) on UPLC/TOF MS

Table S1 Identification and quantitative assay of major components of *shuanglong* formula used in the study

NO.	R.T.(min)	Selected ion	m/z	Elemental composition	Identified result	content (mg/g)
1*	0.54	[M-H] ⁻	197.0272	C ₉ H ₁₀ O ₅	3-(3,4-dihydroxyphenyl) lactic acid	0.22
2	0.64	[M-H] ⁻	313.0923	C ₁₇ H ₁₄ O ₆	salvianolic acid F	—
3	1.26	[M-H] ⁻	137.0224	C ₇ H ₆ O ₃	protocatechuic aldehyde	—
4	1.55		383.0956		not determined	—
5	1.62	[M+HCOO] ⁻	315.1078	C ₁₆ H ₁₄ O ₄	isoimperatrin	—
6	1.83	[M-H] ⁻	417.1034	C ₂₀ H ₁₈ O ₁₀	salvianolic acid D	—
7	1.87	[M-H] ⁻	371.0975	C ₁₉ H ₁₆ O ₈	salvianolic acid M	—
8	2.31	[M-H] ⁻	537.1421	C ₂₇ H ₂₂ O ₁₂	salvianolic acid H	—
9	2.7	[M-H] ⁻	555.1463	C ₂₇ H ₂₄ O ₁₃	salvianolic acid K	—
10	2.8	[M-H] ⁻	537.1498	C ₂₇ H ₂₂ O ₁₂	salvianolic acid I	—
11	2.8	[M-H] ⁻	717.2053	C ₃₆ H ₃₀ O ₁₆	salvianolic acid L	—
12*	2.91	[M-H] ⁻	359.1027	C ₁₈ H ₁₆ O ₈	rosmarinic acid	0.38
13*	3.3	[M-H] ⁻	717.2090	C ₃₆ H ₃₀ O ₁₆	salvianolic acid B	6.34
14	3.43	[M-H] ⁻	537.1498	C ₂₇ H ₂₂ O ₁₂	salvianolic acid J	—
15	3.69	[M-H] ⁻	445.0963	C ₂₁ H ₁₈ O ₁₁	baicalin	—
16*	3.71	[M-H] ⁻	491.1032	C ₂₆ H ₂₂ O ₁₀	salvianolic acid C	0.63
17	3.8	[M-H] ⁻	717.2072	C ₃₆ H ₃₀ O ₁₆	salvianolic acid E	—
18	3.87	[M-H] ⁻	455.3541	C ₃₀ H ₄₈ O ₃	ursolic acid	—
19	3.87	[M+HCOO] ⁻	831.4751	C ₄₁ H ₇₀ O ₁₄	ginsenoside F ₄	—
20	4.06	[M+HCOO] ⁻	419.0966	C ₁₉ H ₁₈ O ₈	methyl rosmarinate	—
21	4.12	[M-H] ⁻	731.2222	C ₃₇ H ₃₂ O ₁₆	9'-methyl lithospermate B	—
22	4.17	[M+HCOO] ⁻	1007.6335	C ₄₈ H ₈₂ O ₁₉	20-gluco-ginsenoside Rf	—
23	4.41	[M+HCOO] ⁻	977.5273	C ₄₇ H ₈₀ O ₁₈	notoginsenoside R ₁	—
24*	4.59	[M+HCOO] ⁻	537.1498	C ₂₇ H ₂₂ O ₁₂	lithospermic acid	0.55
25*	4.77	[M-H] ⁻	493.1253	C ₂₆ H ₂₂ O ₁₀	salvianolic acid A	0.55
26*	4.83	[M+HCOO] ⁻	991.5528	C ₄₈ H ₈₂ O ₁₈	ginsenoside Re	0.44
27*	4.89	[M+HCOO] ⁻	845.5647	C ₄₂ H ₇₂ O ₁₄	ginsenoside Rf	0.17
28	4.9	[M+HCOO] ⁻	459.3927	C ₂₉ H ₅₀ O	β-sitosterol	—
29	5.16	[M-H] ⁻	885.5041	C ₄₅ H ₇₄ O ₁₇	ginsenoside malonyl-Rg ₁	—
30	5.25	[M-H] ⁻	491.0979	C ₁₉ H ₁₆ O ₈	isosalvianolic acid C	—
31*	5.44	[M-H] ⁻	1031.5356	C ₅₁ H ₈₄ O ₂₁	ginsenoside malonyl-Rd	0.072
32	5.55	[M-H] ⁻	885.5643	C ₄₅ H ₇₄ O ₁₇	ginsenoside malonyl-Rg ₁ isomer	—
33	6.15	[M+HCOO] ⁻	815.4805	C ₄₁ H ₇₀ O ₁₃	ginsenoside F ₃	—
34	6.38	[M-H] ⁻	555.1244	C ₂₇ H ₂₄ O ₁₃	dimethyl salvianolate B	—
35	6.67		1033.6500		not determined	—
36*	7.09	[M+HCOO] ⁻	845.5662	C ₄₂ H ₇₂ O ₁₄	ginsenoside Rg ₁	3.39
37	7.33	[M+HCOO] ⁻	1285.6573	C ₅₉ H ₁₀₀ O ₂₇	notoginsenoside R ₄	—
38	7.47	[M+HCOO] ⁻	815.5520	C ₄₁ H ₇₀ O ₁₃	notoginsenoside R ₂	—

39	7.56	[M-H] ⁻	329.2471	C ₂₀ H ₂₆ O ₄	salviol	—
40	7.88	[M+HCOO] ⁻	829.5691	C ₄₂ H ₇₂ O ₁₃	ginsenoside Rg ₂	—
41	7.9	[M+HCOO] ⁻	815.4859	C ₄₁ H ₇₀ O ₁₃	ginsenoside F ₅	—
42	7.94	[M+HCOO] ⁻	1255.6456	C ₅₈ H ₉₈ O ₂₆	ginsenoside Ra ₁	—
43	7.97	[M+HCOO] ⁻	683.4987	C ₃₆ H ₆₂ O ₉	ginsenoside Rh ₁	—
44	8.05	[M+HCOO] ⁻	1285.7575	C ₅₉ H ₁₀₀ O ₂₇	ginsenoside Ra ₃	—
45*	8.11	[M+HCOO] ⁻	1153.7021	C ₅₄ H ₉₂ O ₂₃	ginsenoside Rb ₁	1.12
46*	8.15	[M-H] ⁻	1193.7024	C ₅₇ H ₉₄ O ₂₆	ginsenoside malonyl-Rb ₁	0.27
47	8.18	[M+HCOO] ⁻	1165.6365	C ₅₅ H ₉₂ O ₂₃	ginsenoside Rs ₂	—
48*	8.27	[M+HCOO] ⁻	1001.5022	C ₄₉ H ₈₀ O ₁₈	ginsenoside R ₀	0.59
49	8.28	[M+HCOO] ⁻	683.4992	C ₃₆ H ₆₂ O ₉	ginsenoside F ₁	—
50	8.42	[M+HCOO] ⁻	1255.6363	C ₅₈ H ₉₈ O ₂₆	ginsenoside Ra ₂	—
51*	8.47	[M+HCOO] ⁻	1123.5933	C ₅₃ H ₉₀ O ₂₂	ginsenoside Rb ₂	3.99
52*	8.5	[M-H] ⁻	1163.5982	C ₅₆ H ₉₂ O ₂₅	ginsenoside malonyl-Rb ₂	1.41
53	8.77	[M+HCOO] ⁻	1123.5909	C ₅₃ H ₉₀ O ₂₂	ginsenoside Rb ₃	—
54*	8.8	[M+HCOO] ⁻	1123.5868	C ₅₃ H ₉₀ O ₂₂	ginsenoside Rc	0.54
55*	8.88	[M-H] ⁻	1163.5994	C ₅₆ H ₉₂ O ₂₅	ginsenoside malonyl-Rc	0.099
56	8.96	[M-H] ⁻	339.0806	C ₁₈ H ₁₂ O ₇	salvianolic acid G	—
57	9.16	[M+HCOO] ⁻	1195.6102	C ₅₆ H ₉₄ O ₂₄	panas quinquefolium R ₁	—
58	9.5	[M+HCOO] ⁻	1165.7053	C ₅₅ H ₉₂ O ₂₃	ginsenoside Rs ₁	—
59*	9.56	[M+HCOO] ⁻	991.5594	C ₄₈ H ₈₂ O ₁₈	ginsenoside Rd	0.26
60	9.82		503.2664		not determined	—
61	10.1	[M+HCOO] ⁻	991.5609	C ₄₈ H ₈₂ O ₁₈	Rd isomer	—
62	10.56	[M-H] ⁻	961.5531	C ₄₈ H ₈₂ O ₁₉	20-gluco-ginsenoside Rf isomer	—
63	10.72		1033.5769		not determined	—
64	10.91		961.6228		not determined	—
65	11.16	[M+HCOO] ⁻	811.5568	C ₄₂ H ₇₀ O ₁₂	ginsenoside Rg ₄	—
66	11.43	[M+HCOO] ⁻	811.5567	C ₄₂ H ₇₀ O ₁₂	ginsenoside Rg ₅	—
67	11.81		665.4831		not determined	—
68	11.96	[M+HCOO] ⁻	829.488	C ₄₂ H ₇₂ O ₁₃	Rg ₂ isomer	—
69	12.62	[M+HCOO] ⁻	505.3546	C ₃₀ H ₅₂ O ₃	protopanaxadiol	—
70	12.7	[M+HCOO] ⁻	829.5677	C ₄₂ H ₇₂ O ₁₃	ginsenoside F ₂	—
71	12.92	[M+HCOO] ⁻	829.5697	C ₄₂ H ₇₂ O ₁₃	ginsenoside Rg ₃	—
72	13.32	[M+HCOO] ⁻	799.4894	C ₄₁ H ₇₀ O ₁₂	ginsenoside Mc	—
73	13.91		595.2895		not determined	—
74	14.43		1191.5946		not determined	—
75	14.69		723.4442		not determined	—
76	15.03	[M+HCOO] ⁻	667.4415	C ₃₆ H ₆₂ O ₈	ginsenoside Rh ₂	—
77	15.11	[M+HCOO] ⁻	851.4934	C ₅₁ H ₉₈ O ₆	tripalmitin	—
78	15.21	[M+HCOO] ⁻	811.4869	C ₄₂ H ₇₀ O ₁₂	ginsenoside Rg ₆	—
79	15.43	[M+HCOO] ⁻	649.3914	C ₃₆ H ₆₀ O ₇	ginsenoside Rh ₃	—
80	15.48	[M+HCOO] ⁻	811.4849	C ₄₂ H ₇₀ O ₁₂	ginsenoside Rk ₁	—
81	15.58	[M+HCOO] ⁻	667.4438	C ₃₆ H ₆₂ O ₈	Compound K	—

82	15.97		433.2725			not determined	—
83	16.33	[M+HCOO] ⁻	625.2377	C ₂₈ H ₃₆ O ₁₃		eleatheroside B	—
84	17.08	[M-H] ⁻	455.2816	C ₃₀ H ₄₈ O ₃		oleanolic acid	—
85	17.46	[M+HCOO] ⁻	461.26677	C ₂₇ H ₄₄ O ₃		tigogenin	—
86	18.22	[M+HCOO] ⁻	649.4343	C ₃₆ H ₆₀ O ₇		ginsenoside Rk ₂	—

* The indicative major components were assayed with external standard calibrations and the other components were estimated and controlled with their peak area.

Table S2 Identification and quantitative assay of major components of *salvia miltiorrhiza* extract used in the study

NO.	R.T.(min)	Selected ion	m/z	Elemental composition	Identification	content (mg/g)
1*	0.54	[M-H] ⁻	197.0272	C ₉ H ₁₀ O ₅	3-(3,4-dihydroxyphenyl) lactic acid	0.81
2	0.64	[M-H] ⁻	313.0923	C ₁₇ H ₁₄ O ₆	salvianolic acid F	—
3	1.26	[M-H] ⁻	137.0224	C ₇ H ₆ O ₃	protocatechuic aldehyde	—
4	1.55	[M-H] ⁻	383.0956	C ₂₁ H ₂₀ O ₇	not determined	—
5	1.62	[M+HCOO] ⁻	315.1078	C ₁₆ H ₁₄ O ₄	isoimperatrin	—
6	1.83	[M-H] ⁻	417.1034	C ₂₀ H ₁₈ O ₁₀	salvianolic acid D	—
7	1.87	[M-H] ⁻	371.0975	C ₁₉ H ₁₆ O ₈	salvianolic acid M	—
8	2.31	[M-H] ⁻	537.1421	C ₂₇ H ₂₂ O ₁₂	salvianolic acid H	—
9	2.7	[M-H] ⁻	555.1463	C ₂₇ H ₂₄ O ₁₃	salvianolic acid K	—
10	2.8	[M-H] ⁻	537.1498	C ₂₇ H ₂₂ O ₁₂	salvianolic acid I	—
11	2.8	[M-H] ⁻	717.2053	C ₃₆ H ₃₀ O ₁₆	salvianolic acid L	—
12*	2.91	[M-H] ⁻	359.1027	C ₁₈ H ₁₆ O ₈	rosmarinic acid	1.93
13*	3.3	[M-H] ⁻	717.2090	C ₃₆ H ₃₀ O ₁₆	salvianolic acid B	23.69
14	3.43	[M-H] ⁻	537.1498	C ₂₇ H ₂₂ O ₁₂	salvianolic acid J	—
15	3.69	[M-H] ⁻	445.0963	C ₂₁ H ₁₈ O ₁₁	baicalin	—
16*	3.71	[M-H] ⁻	491.1032	C ₂₆ H ₂₂ O ₁₀	salvianolic acid C	2.19
17	3.8	[M-H] ⁻	717.2072	C ₃₆ H ₃₀ O ₁₆	salvianolic acid E	—
18	3.87	[M-H] ⁻	455.3541	C ₃₀ H ₄₈ O ₃	ursolic acid	—
20	4.06	[M+HCOO] ⁻	419.0966	C ₁₉ H ₁₈ O ₈	methyl rosmarinate	—
21	4.12	[M-H] ⁻	731.2222	C ₃₇ H ₃₂ O ₁₆	9'-methyl lithospermate B	—
24*	4.59	[M+HCOO] ⁻	537.1498	C ₂₇ H ₂₂ O ₁₂	lithospermic acid	2.21
25*	4.77	[M-H] ⁻	493.1253	C ₂₆ H ₂₂ O ₁₀	salvianolic acid A	2.05
30	5.25	[M-H] ⁻	491.0979	C ₁₉ H ₁₆ O ₈	isosalvianolic acid C	—
34	6.38	[M-H] ⁻	555.1244	C ₂₇ H ₂₄ O ₁₃	dimethyl salvianolate B	—
39	7.56	[M-H] ⁻	329.2471	C ₂₀ H ₂₆ O ₄	salviol	—
56	8.96	[M-H] ⁻	339.0806	C ₁₈ H ₁₂ O ₇	salvianolic acid G	—

* The indicative major components were assayed with external standard calibrations and the other components were estimated and controlled with their peak area.

Table S3 Identification and quantitative assay of major components of *panax ginseng* extract used in the study

NO.	R.T.(min)	Selected ion	m/z	Elemental composition	Identified result	content (mg/g)
19	3.87	[M+HCOO] ⁻	831.4751	C ₄₁ H ₇₀ O ₁₄	ginsenoside F ₄	—
22	4.17	[M+HCOO] ⁻	1007.6335	C ₄₈ H ₈₂ O ₁₉	20-gluco-ginsenoside Rf	—
23	4.41	[M+HCOO] ⁻	977.5273	C ₄₇ H ₈₀ O ₁₈	notoginsenoside R ₁	—
26*	4.83	[M+HCOO] ⁻	991.5528	C ₄₈ H ₈₂ O ₁₈	ginsenoside Re	0.61
27*	4.89	[M+HCOO] ⁻	845.5647	C ₄₂ H ₇₂ O ₁₄	ginsenoside Rf	0.23
28	4.9	[M+HCOO] ⁻	459.3927	C ₂₉ H ₅₀ O	β-sitosterol	—
29	5.16	[M-H] ⁻	885.5041	C ₄₅ H ₇₄ O ₁₇	ginsenoside malonyl-Rg ₁	—
31*	5.44	[M-H] ⁻	1031.5356	C ₅₁ H ₈₄ O ₂₁	ginsenoside malonyl-Rd	0.11
32	5.55	[M-H] ⁻	885.5643	C ₄₅ H ₇₄ O ₁₇	ginsenoside alonyl-Rg1 isomer	—
33	6.15	[M+HCOO] ⁻	815.4805	C ₄₁ H ₇₀ O ₁₃	ginsenoside F ₃	—
35	6.67		1033.6500		not determined	—
36*	7.09	[M+HCOO] ⁻	845.5662	C ₄₂ H ₇₂ O ₁₄	ginsenoside Rg ₁	4.64
37	7.33	[M+HCOO] ⁻	1285.6573	C ₅₉ H ₁₀₀ O ₂₇	notoginsenoside R ₄	—
38	7.47	[M+HCOO] ⁻	815.5520	C ₄₁ H ₇₀ O ₁₃	notoginsenoside R ₂	—
40	7.88	[M+HCOO] ⁻	829.5691	C ₄₂ H ₇₂ O ₁₃	ginsenoside Rg ₂	—
41	7.9	[M+HCOO] ⁻	815.4859	C ₄₁ H ₇₀ O ₁₃	ginsenoside F ₅	—
42	7.94	[M+HCOO] ⁻	1255.6456	C ₅₈ H ₉₈ O ₂₆	ginsenoside Ra ₁	—
43	7.97	[M+HCOO] ⁻	683.4987	C ₃₆ H ₆₂ O ₉	ginsenoside Rh ₁	—
44	8.05	[M+HCOO] ⁻	1285.7575	C ₅₉ H ₁₀₀ O ₂₇	ginsenoside Ra ₃	—
45*	8.11	[M+HCOO] ⁻	1153.7021	C ₅₄ H ₉₂ O ₂₃	ginsenoside Rb ₁	1.57
46*	8.15	[M-H] ⁻	1193.7024	C ₅₇ H ₉₄ O ₂₆	ginsenoside malonyl-Rb ₁	0.35
47	8.18	[M+HCOO] ⁻	1165.6365	C ₅₅ H ₉₂ O ₂₃	ginsenoside Rs ₂	—
48*	8.27	[M+HCOO] ⁻	1001.5022	C ₄₉ H ₈₀ O ₁₈	ginsenoside R ₀	0.73
49	8.28	[M+HCOO] ⁻	683.4992	C ₃₆ H ₆₂ O ₉	ginsenoside F ₁	—
50	8.42	[M+HCOO] ⁻	1255.6363	C ₅₈ H ₉₈ O ₂₆	ginsenoside Ra ₂	—
51*	8.47	[M+HCOO] ⁻	1123.5933	C ₅₃ H ₉₀ O ₂₂	ginsenoside Rb ₂	5.04
52*	8.5	[M-H] ⁻	1163.5982	C ₅₆ H ₉₂ O ₂₅	ginsenoside malonyl-Rb ₂	1.77
53	8.77	[M+HCOO] ⁻	1123.5909	C ₅₃ H ₉₀ O ₂₂	ginsenoside Rb ₃	—
54*	8.8	[M+HCOO] ⁻	1123.5868	C ₅₃ H ₉₀ O ₂₂	ginsenoside Rc	0.81
55*	8.88	[M-H] ⁻	1163.5994	C ₅₆ H ₉₂ O ₂₅	ginsenoside malonyl-Rc	0.14
57	9.16	[M+HCOO] ⁻	1195.6102	C ₅₆ H ₉₄ O ₂₄	panas quinquefolium R ₁	—
58	9.5	[M+HCOO] ⁻	1165.7053	C ₅₅ H ₉₂ O ₂₃	ginsenoside Rs ₁	—
59*	9.56	[M+HCOO] ⁻	991.5594	C ₄₈ H ₈₂ O ₁₈	ginsenoside Rd	0.38
60	9.82		503.2664		not determined	—
61	10.1	[M+HCOO] ⁻	991.5609	C ₄₈ H ₈₂ O ₁₈	ginsenoside Rd isomer	—
62	10.56	[M-H] ⁻	961.5531	C ₄₈ H ₈₂ O ₁₉	20-gluco-ginsenoside Rf isomer	—
63	10.72		1033.5769		not determined	—
64	10.91		961.6228		not determined	—

65	11.16	[M+HCOO] ⁻	811.5568	C ₄₂ H ₇₀ O ₁₂	ginsenoside Rg ₄	—
66	11.43	[M+HCOO] ⁻	811.5567	C ₄₂ H ₇₀ O ₁₂	ginsenoside Rg ₅	—
67	11.81		665.4831		not determined	—
68	11.96	[M+HCOO] ⁻	829.488	C ₄₂ H ₇₂ O ₁₃	ginsenoside Rg ₂ isomer	—
69	12.62	[M+HCOO] ⁻	505.3546	C ₃₀ H ₅₂ O ₃	protopanaxadiol	—
70	12.7	[M+HCOO] ⁻	829.5677	C ₄₂ H ₇₂ O ₁₃	ginsenoside F ₂	—
71	12.92	[M+HCOO] ⁻	829.5697	C ₄₂ H ₇₂ O ₁₃	ginsenoside Rg ₃	—
72	13.32	[M+HCOO] ⁻	799.4894	C ₄₁ H ₇₀ O ₁₂	ginsenoside Mc	—
73	13.91		595.2895		not determined	—
74	14.43		1191.5946		not determined	—
75	14.69		723.4442		not determined	—
76	15.03	[M+HCOO] ⁻	667.4415	C ₃₆ H ₆₂ O ₈	ginsenoside Rh ₂	—
77	15.11	[M+HCOO] ⁻	851.4934	C ₅₁ H ₉₈ O ₆	tripalmitin	—
78	15.21	[M+HCOO] ⁻	811.4869	C ₄₂ H ₇₀ O ₁₂	ginsenoside Rg ₆	—
79	15.43	[M+HCOO] ⁻	649.3914	C ₃₆ H ₆₀ O ₇	ginsenoside Rh ₃	—
80	15.48	[M+HCOO] ⁻	811.4849	C ₄₂ H ₇₀ O ₁₂	ginsenoside Rk ₁	—
81	15.58	[M+HCOO] ⁻	667.4438	C ₃₆ H ₆₂ O ₈	Compound K	—
82	15.97		433.2725		not determined	—
83	16.33	[M+HCOO] ⁻	625.2377	C ₂₈ H ₃₆ O ₁₃	eletheroside B	—
84	17.08	[M-H] ⁻	455.2816	C ₃₀ H ₄₈ O ₃	oleanolic acid	—
85	17.46	[M+HCOO] ⁻	461.26677	C ₂₇ H ₄₄ O ₃	tigogenin	—
86	18.22	[M+HCOO] ⁻	649.4343	C ₃₆ H ₆₀ O ₇	ginsenoside Rk ₂	—

* The indicative major components were assayed with external standard calibrations and the other components were estimated and controlled with their peak area.

Supplementary Figure S4

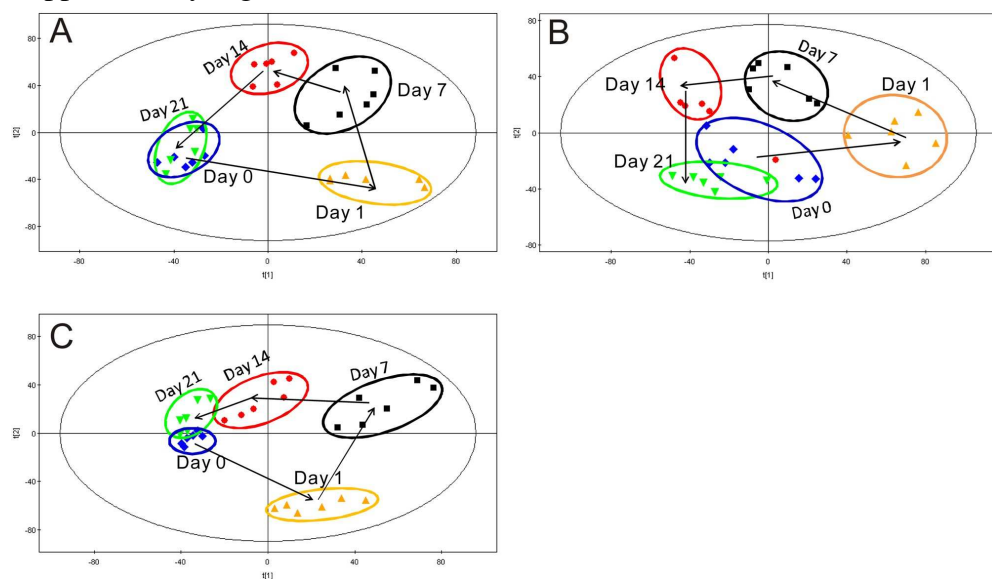


Figure S4 PLS-DA scores plot of non-normalized rat urine data of SLF group (A), SM group (B), PG group (C).

SLFG: SLF group; PGG: PG group; SMG: SM group