

## Supporting Information for

### Investigation of the Formation of CuInS<sub>2</sub> Nanoparticles by the Oleylamine Route – Comparison of Microwave-Assisted with Conventional Syntheses

Andreas Pein<sup>1,2</sup>, Mostafa Baghbanzadeh<sup>3,4</sup>, Thomas Rath<sup>1,2</sup>, Wernfried Haas<sup>2,5</sup>, Eugen Maier<sup>1</sup>, Heinz Amenitsch<sup>6</sup>, Ferdinand Hofer<sup>5</sup>, C. Oliver Kappe<sup>3,4\*</sup>, Gregor Trimmel<sup>1,2\*</sup>

<sup>1</sup> Institute for Chemistry and Technology of Materials, Graz University of Technology, Stremayrgasse 9, 8010 Graz, Austria, email: gregor.trimmel@tugraz.at

<sup>2</sup> Christian Doppler Laboratory for Nanocomposite Solar Cells, Graz University of Technology and NanoTecCenter Weiz Forschungsgesellschaft mbH, Austria

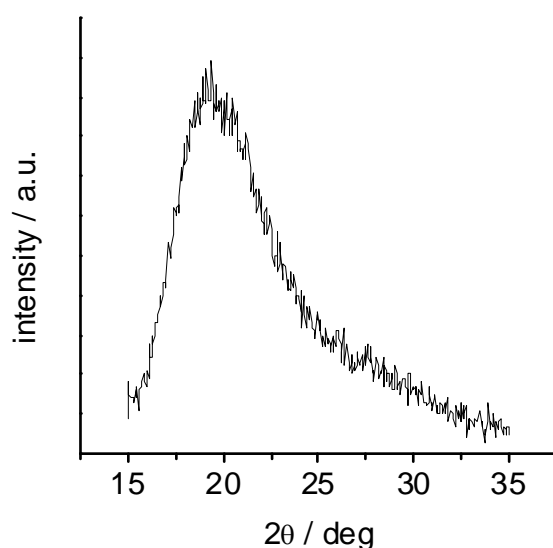
<sup>3</sup> Institute of Chemistry, University of Graz, Heinrichstrasse 28, 8010 Graz, Austria

<sup>4</sup> Christian Doppler Laboratory for Microwave Chemistry, University of Graz, Heinrichstrasse 28, 8010 Graz, Austria

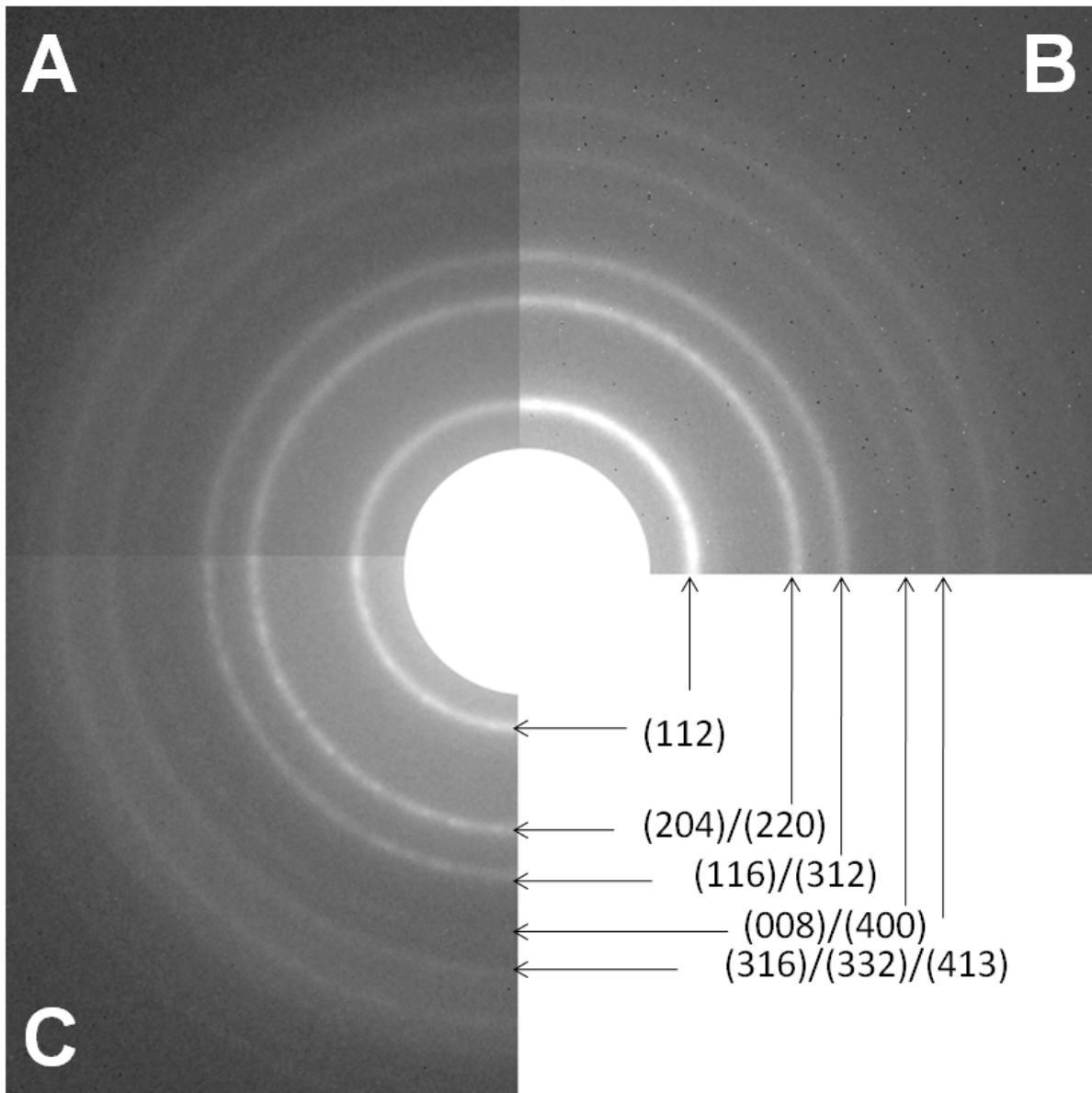
<sup>5</sup> Institute for Electron Microscopy and Fine Structure Research, Graz University of Technology, Steyrergasse 17, 8010 Graz, Austria

<sup>6</sup> Institute of Biophysics and Nanosystems Research, Schmiedlstrasse 6, 8042 Graz, Austria

In Figure S1 the XRD pattern of pure oleylamine, consisting of a broad reflection centered around 18-20° 2θ, is shown.



**Figure S1.** XRD pattern of oleylamine



**Figure S2.** SAED patterns of the samples MW-PY (A), SiC (B) and Oilbath (C) including the corresponding indexes (fourth quadrant)

In Figure S2 the SAED patterns of the samples MW-PY (A), SiC (B) and Oilbath (C) are depicted. In the fourth quadrant of the picture the corresponding indexes are given.