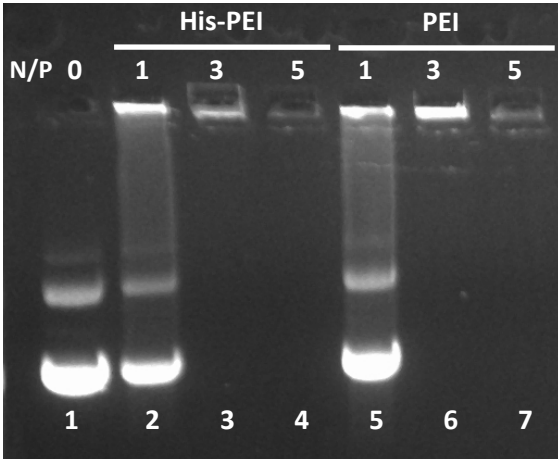


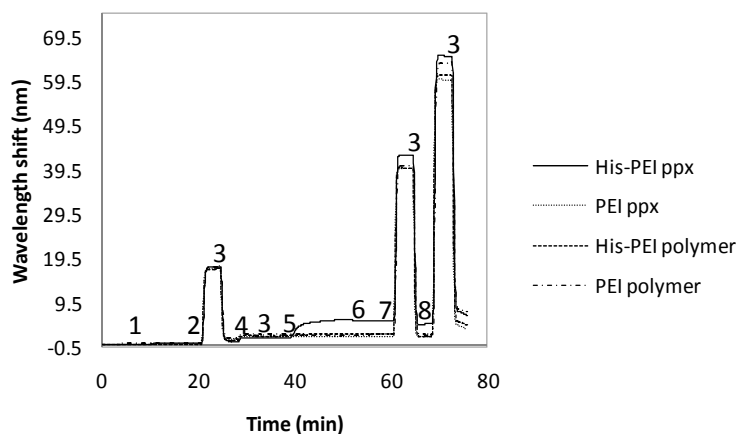
Supplementary Materials:

Figure S1: Polyplex plasmid loading at different N/P ratios



Plasmid loading of polyplexes at different N/P ratios. Lane 1: Plasmid only; Lanes 2 - 5: His-PEI polyplexes at N/P = 1, 3, 5; Lanes 4-7: PEI polyplexes at N/P = 1, 3, 5

Figure S2: Sensorgram of entire SPR experiment on NTA surface



Representative SPR sensorgram of a complete SPR experiment on a 75% OEG-NTA/25% OEG-OH SAM. Samples: N/P = 5 His-PEI polyplex, N/P = 5 PEI polyplex, 0.064 mg/mL His-PEI polymer, 0.064 mg/mL PEI polymer. 1: dH₂O, 20 min, 30 μ L/min; 2: 100 mM NiSO₄, 4 min, 100 μ L/min; 3: dH₂O, 4 min, 100 μ L/min; 4: 0.064 mg/mL PEI, 4 min, 100 μ L/min; 5: samples, 12 min, 30 μ L/min; 6: dH₂O, 12 min, 30 μ L/min; 7: 500 mM Imidazole, 4 min, 100 μ L/min; 8: 200 mM EDTA, 4 min, 100 μ L/min.

Figure S3. Cell viability with different concentrations of imidazole and EDTA

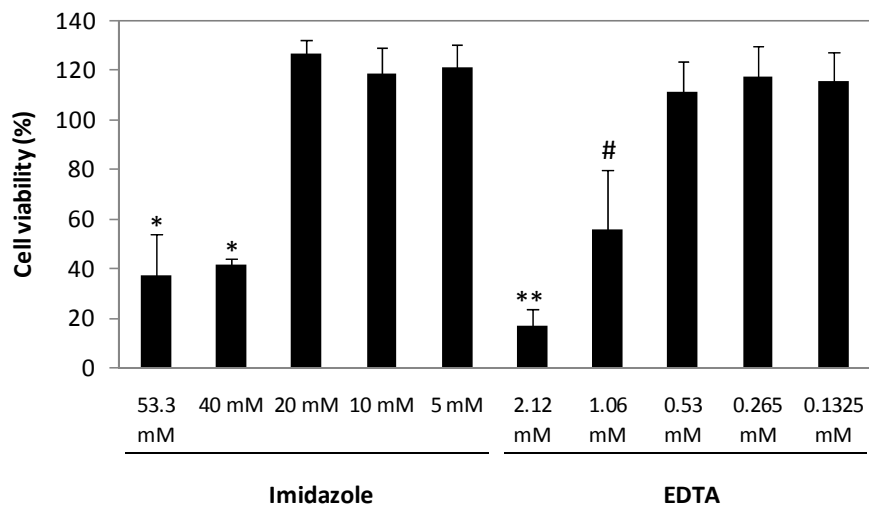


Figure S3. Cell viability of NIH-3T3 cells incubated with various concentrations of imidazole or EDTA. Error bars denote standard deviations for 3 measurements ($n = 3$) for each sample (Student's t -test, * $p < 0.001$ compared to 20 mM Imidazole, ** $p < 0.001$ compared to 0.53 mM EDTA, # $p < 0.05$ compared to 0.53 mM EDTA).