

Supporting Information

Infrared Spectra of $\text{CF}_2=\text{CHD}$ and $\text{CF}_2=\text{CD}_2$; Scaled Quantum-Chemical Force Fields and an Equilibrium Structure for 1,1-Difluoroethylene

Donald C. McKean,^a Mark M. Law,^b Peter Groner,^c Andrew R. Conrad,^d Michael J. Tubergen,^d David Feller,^e Michael C. Moore,^f and Norman C. Craig^{f*}

^a *School of Chemistry, University of Edinburgh, West Mains Road, Edinburgh EH9 3JJ, United Kingdom*

^b *Chemistry Department, University of Aberdeen, Meston Walk, Aberdeen AB24 3UE, United Kingdom*

^c *Department of Chemistry, University of Missouri-Kansas City, Kansas City, Missouri 64110-2499*

^d *Department of Chemistry, Kent State University, Kent, Ohio 44242*

^e *Department of Chemistry, Washington State University, Pullman, WA 99164-4630*

^f *Department of Chemistry and Biochemistry, Oberlin College, Oberlin, Ohio 44074*

Figure S1a. Gas-phase infrared spectrum from 4000 – 2000 cm^{-1} of $\text{F}_2\text{C}=\text{CDH}$ at 9 torr. Many lines from uncompensated H_2O and CO_2 .

Figure S1b. Gas-phase infrared spectrum from 2000 – 400 cm^{-1} of $\text{F}_2\text{C}=\text{CDH}$ at 9 torr. Many lines from uncompensated H_2O and CO_2 .

Figure S2. Gas-phase infrared spectrum from 650 – 200 cm^{-1} of $\text{F}_2\text{C}=\text{CDH}$ at 259 torr. Sharp features at 629.8, 594.0, and 588.1 are from an impurity. Weak broad features below 500 cm^{-1} are also regarded as impurity bands from $\text{F}_2\text{BrC}-\text{CFDH}$.

Figure S3a. Gas-phase infrared spectrum from 3000 – 2000 cm^{-1} of $\text{F}_2\text{C}=\text{CD}_2$ at 4 torr. Many lines from uncompensated H_2O and CO_2 .

Figure S3b. Gas-phase infrared spectrum from 2000 – 400 cm^{-1} of $\text{F}_2\text{C}=\text{CD}_2$ at 4 torr. Many lines from uncompensated H_2O and CO_2 .

Figure S4. Gas-phase infrared spectrum from 700 – 200 cm^{-1} of $\text{F}_2\text{C}=\text{CD}_2$ at 252 torr. Weak sharp features from uncompensated H_2O .

TABLE S1. Equilibrium Geometry and Symmetry Coordinates for 1,1-Difluoroethylene.

TABLE S2. Scaled Harmonic Force Field for 11DFE; units $\text{aJ } \text{\AA}^{-2}$, aJ rad^{-2} , $\text{aJ } \text{\AA}^{-1}\text{rad}^{-1}$.

TABLE S3. Microwave Lines for the Isotopomers of 1,1-Difluoroethylene (in MHz).

TABLE S4. Equilibrium Rotational Constants for the Isotopomers of 1,1-Difluoroethylene (in MHz).

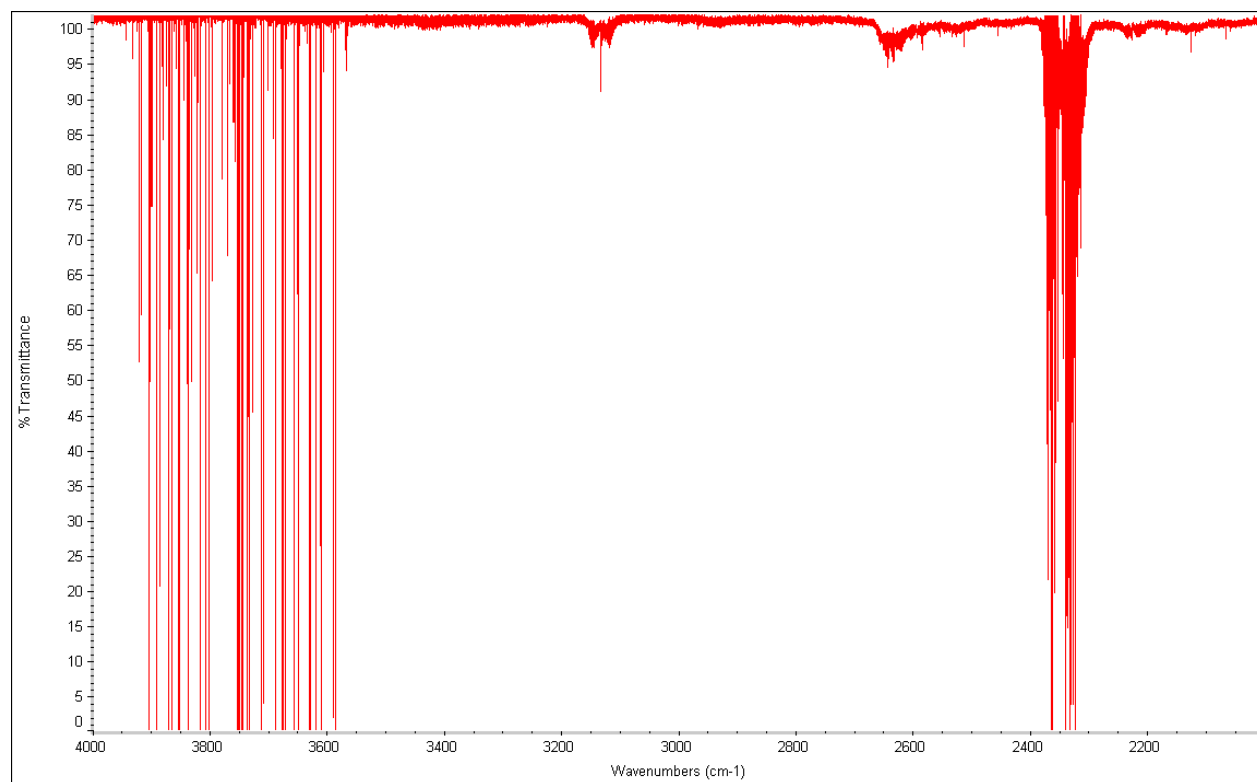


Figure S1a.

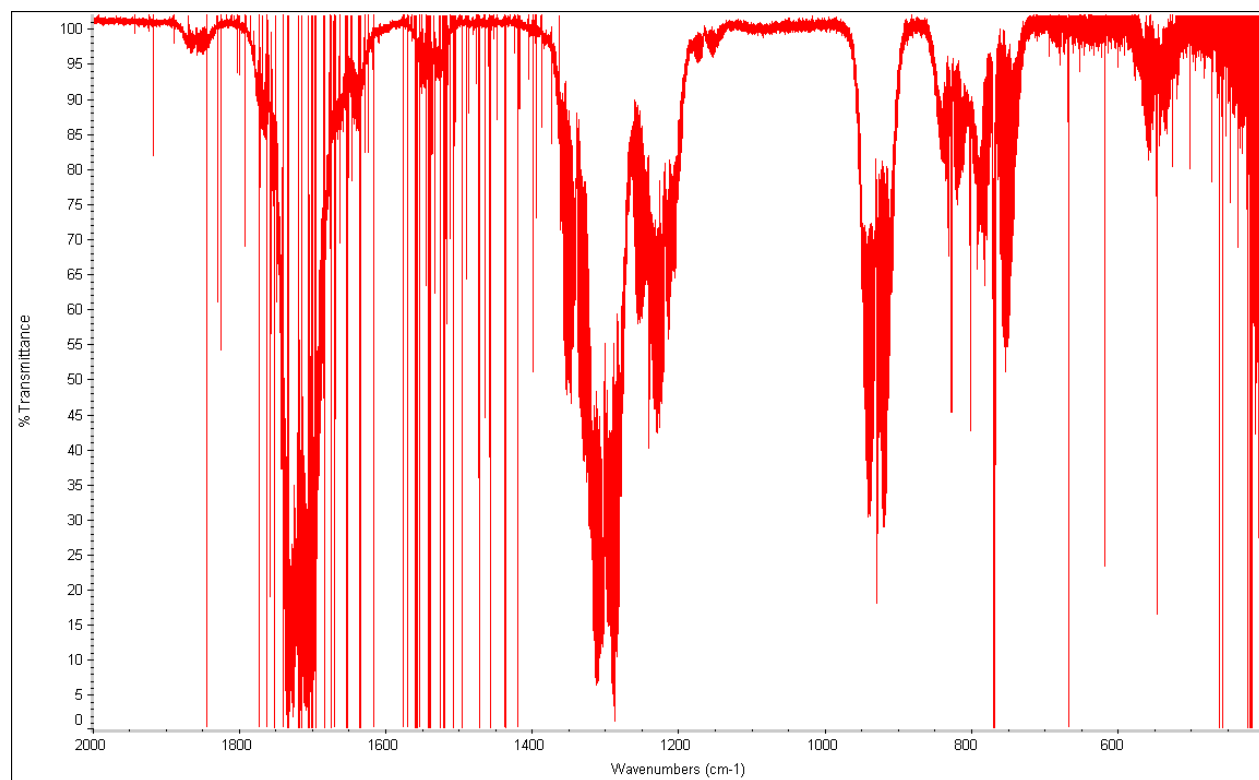


Figure S1b.

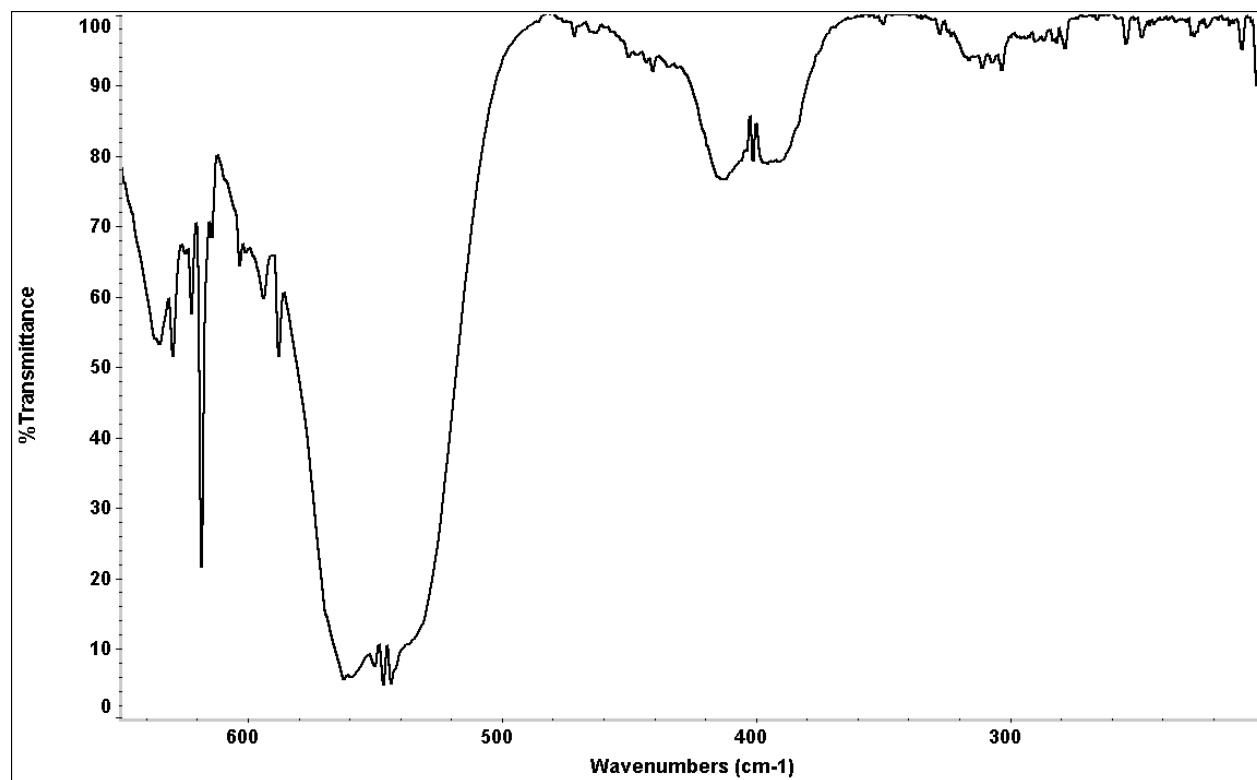


Figure S2.

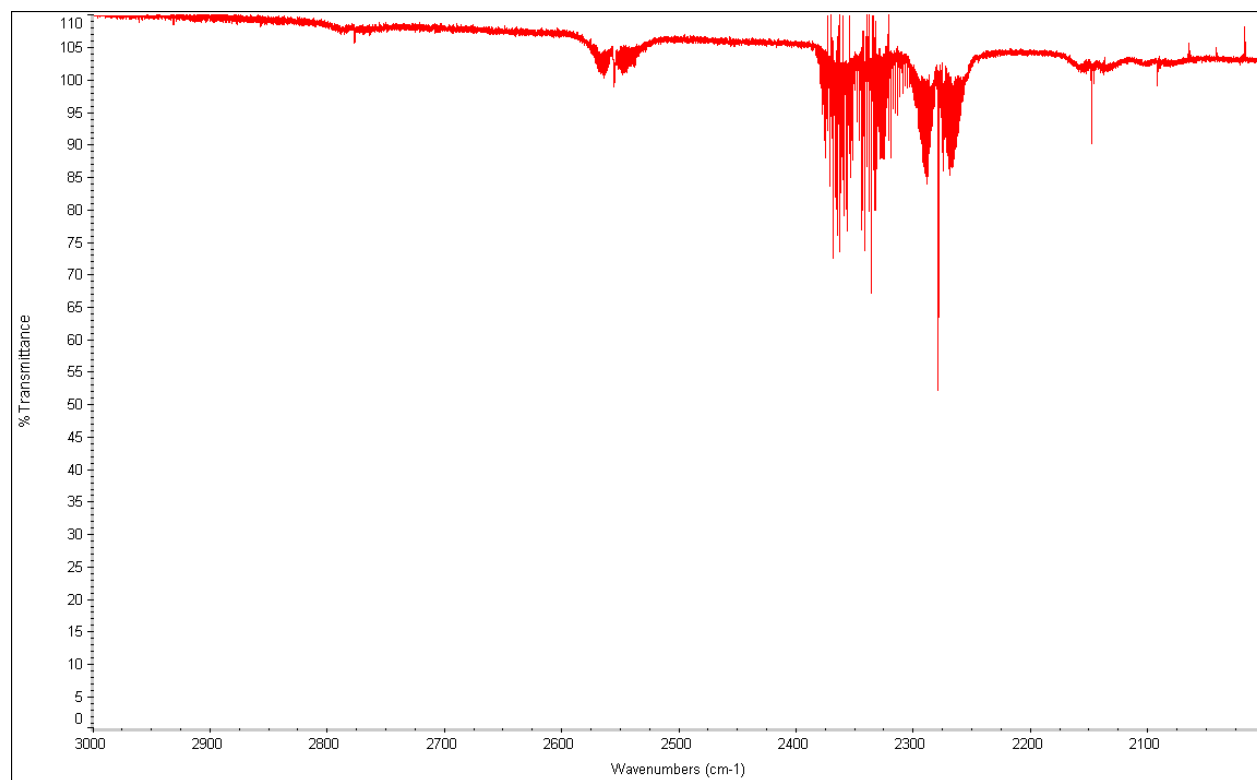


Figure S3a.

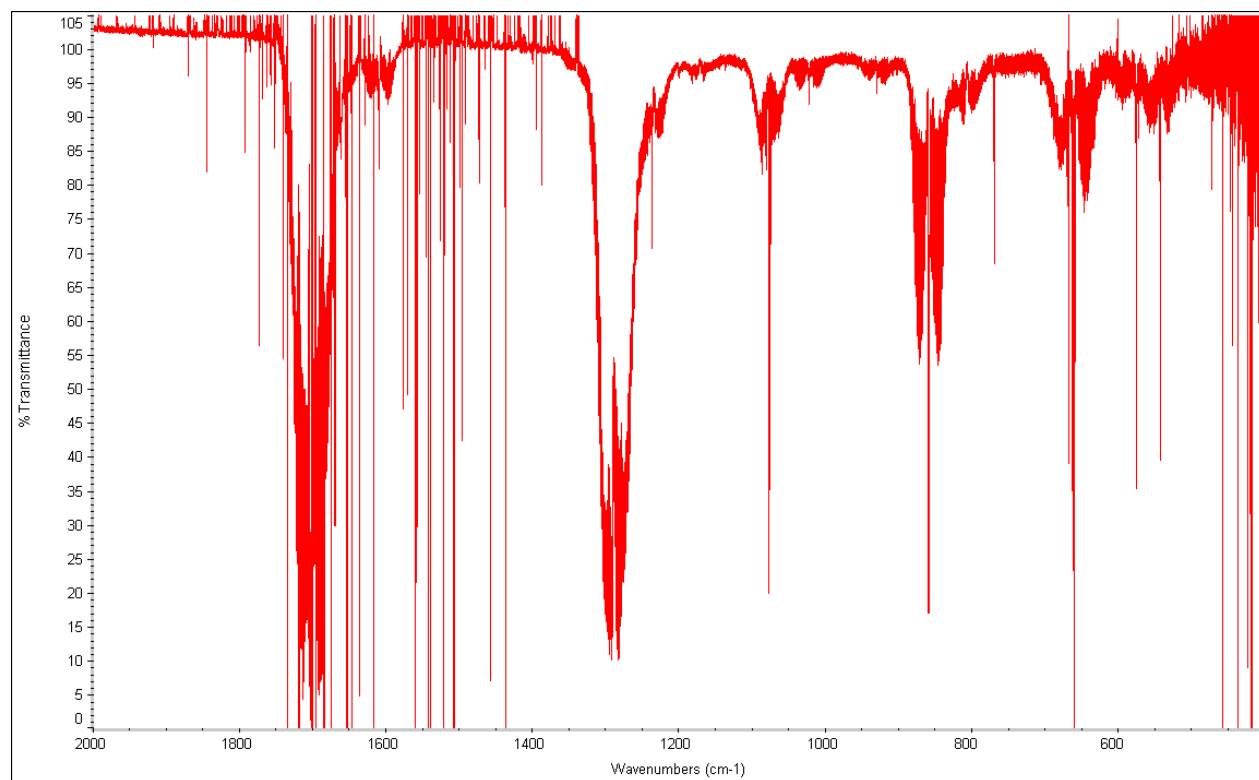


Figure S3b.

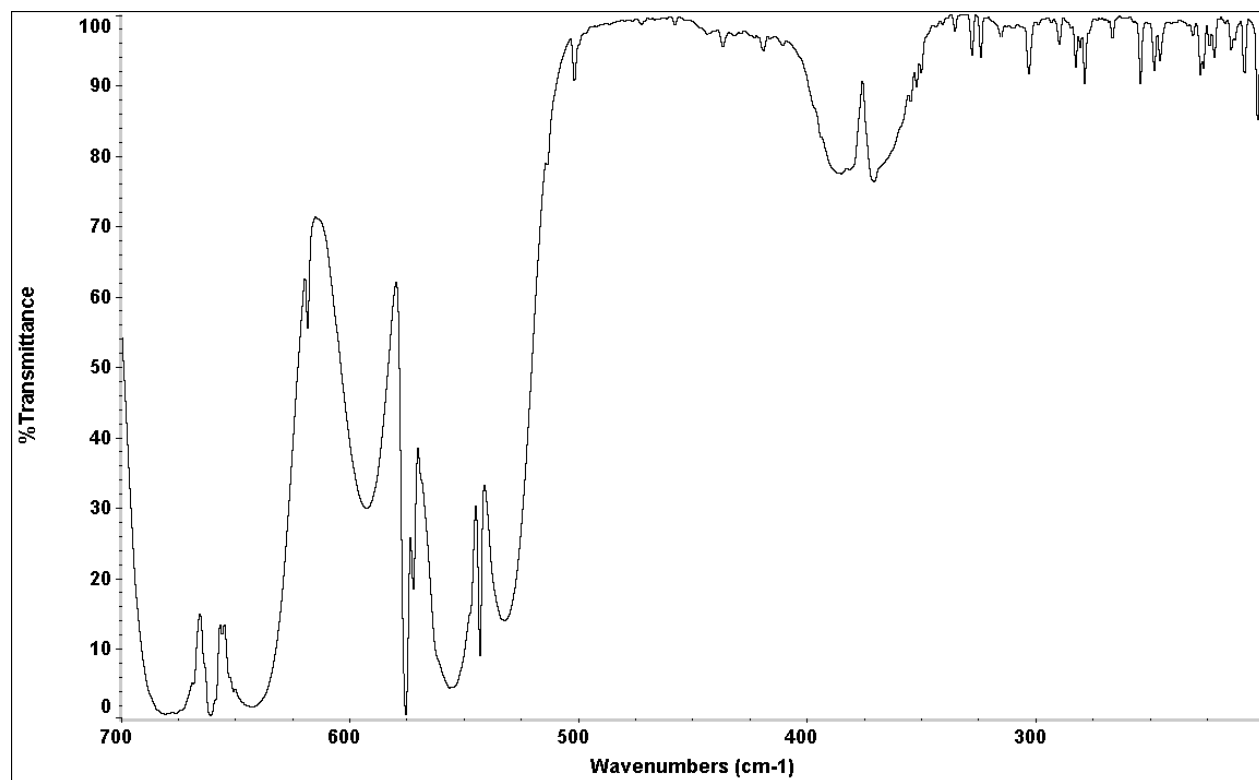


Figure S4.

Table S1: Equilibrium Geometry and Symmetry Coordinates for 1,1-Difluoroethylene**Geometry (macct model)**

$r_{C_1=C_2} = 1.321311 \text{ \AA}$; $r_{C_2-H_3} = 1.075012 \text{ \AA}$; $r_{C_1-F_5} = 1.319682 \text{ \AA}$; $\angle H_3C_2H_4 = 121.6127^\circ$;
 $\angle F_5C_1F_6 = 109.6403^\circ$; Dihedral $\angle F_5C_1C_2H_3 = 0.0^\circ$.

Symmetry Coordinates

S^a	type	Coordinate
A ₁ 1	v_sCH_2	$r_{C_2H_3} + r_{C_2H_4}$
2	v_sCF_2	$r_{C_1F_5} + r_{C_1F_6}$
3	v_{CC}	$r_{C_1C_2}$
4	δHCH	$2\angle H_3C_2H_4 - \angle H_3C_2C_1 - \angle H_4C_2C_1$
5	δFCF	$2\angle F_5C_1F_6 - \angle F_5C_1C_2 - \angle F_6C_1C_2$
A ₂ 6	Twist	$Di \angle F_5C_1C_2H_3 + Di \angle F_5C_1C_2H_4 + Di \angle F_6C_1C_2H_3 + Di \angle F_6C_1C_2H_4^b$
B ₁ 7	$v_{as}CH_2$	$r_{C_2H_3} - r_{C_2H_4}$
8	$v_{as}CF_2$	$r_{C_1F_5} - r_{C_1F_6}$
9	ρCH_2	$\angle H_3C_2C_1 - \angle H_4C_2C_1$
10	ρCF_2	$\angle F_5C_1C_2 - \angle F_6C_1C_2$
B ₂ 11	wCH_2	$\perp C_2C_1H_3H_4^c$
12	wCF_2	$\perp C_1C_2F_6F_5^c$

^a For the purposes of the scale factor refinement, coordinates S_1 - S_5 and S_7 - S_{10} were grouped together in an A' block; similarly S_6 , S_{11} and S_{12} constituted an A'' block.

^b $Di\angle =$ Dihedral angle.

^c Out-of-plane bending angle.

TABLE S2: Scaled Harmonic Force Field for 11DFE; units aJ Å⁻²; aJ rad⁻²

	i	j	F _{ij}				F _{ij}
A ₁	1	1	5.8191	A ₂	6	6	0.1312
	1	2	-0.0285	B ₁	7	7	5.8193
	2	2	7.7243		7	8	0.0089
	1	3	-0.0071		8	8	6.3427
	2	3	0.6502		7	9	0.1563
	3	3	9.9317		8	9	-0.1054
	1	4	0.0376		9	9	0.4671
	2	4	-0.0399		7	10	-0.0698
	3	4	-0.2100		8	10	0.6722
	4	4	0.4300		9	10	-0.1256
	1	5	-0.0027		10	10	0.8759
	2	5	0.3546	B ₂	11	11	0.1743
	3	5	-0.2759		11	12	0.0706
	4	5	0.0223		12	12	0.5455
	5	5	1.2537				

TABLE S3: Microwave Lines for the Isotopomers of 1,1-Difluoroethylene (in MHz)

Transition $JK_a'K_c'-J''K_a''K_c''$	$F_2C=CH_2$		$F_2^{13}C=CH_2$		$F_2C=^{13}CH_2$	
	obs	calc	obs	calc	obs	calc
6 5 1-6 5 2	10532.465	-0.0022				
5 4 1-5 4 2	12025.643	0.0023	11993.052	-0.0036		
4 3 1-4 3 2	13335.799	0.0011	13312.590	0.0043	11067.234	0.0067
3 2 1-3 2 2	14419.908	-0.0005	14404.897	0.0074	12871.193	-0.0026
2 1 1-2 1 2	15250.619	-0.0014	15242.073	0.0040	14290.274	0.0019
1 0 1-0 0 0	15774.359	0.0073	15770.277	0.0066	15219.294	-0.0160
3 0 3-2 2 0	15885.545	0.0015			15318.257	0.0085
2 2 1-2 0 2	17017.135	-0.0027	17023.272	0.0001	17467.978	0.0142
6 1 5-5 3 2						
3 3 1-3 1 2	18086.032	0.0021	18102.508	0.0020	19628.258	-0.0061
4 4 1-4 2 2	19723.423	0.0032	19756.895	0.0051		
5 5 1-5 3 2	22071.019	-0.0020	22129.741	-0.0023		
7 5 2-7 5 3						
5 2 4-4 4 1					20107.537	-0.0017
6 4 2-6 4 3					20989.861	-0.0016
5 3 2-5 3 3						
4 2 2-4 2 3						
2 1 2-1 1 1	26465.00 ^a	-0.0556	26459.71 ^a	-0.0328		
3 1 2-3 1 3	26651.71 ^a	0.0243	26645.70 ^a	-0.1077		
3 2 2-3 0 3	26881.20 ^a	-0.0183				
2 0 2-1 0 1	26992.80 ^a	-0.0030			26541.64 ^a	-0.0059
Transition ^b						
$JK_a'K_c'-J''K_a''K_c''$	$F_2C=CHD$		$F_2C=CD_2$			
	obs	calc	obs	calc		
3 2 1-3 2 2	11494.753	-0.0124	10289.345	-0.0093		
2 1 1-2 1 2	13375.030	-0.0222	12411.172	-0.0144		
1 0 1-0 0 0	14631.982	-0.0022	13849.316	0.0115		
3 0 3-2 2 0	14606.565	-0.0338	13676.937	-0.0017		
2 2 1-2 0 2	17793.877	0.1015	17581.312	-0.0038		
6 1 5-5 3 2			20732.079	0.0049		
3 3 1-3 1 2	21055.631	0.0057	21587.788	0.0174		
7 5 2-7 5 3	13713.566	-0.0256	10565.425	0.0031		
5 2 4-4 4 1			13930.190	0.0226		
6 4 2-6 4 3	17332.850	-0.0068	14452.902	-0.0026		
5 3 2-5 3 3	20525.821	-0.0012	18098.578	-0.0346		
4 2 2-4 2 3			21085.556	0.0084		

^a From reference 8. Given weights of 0.1 in fitting rotational constants.^b In order of increasing frequency for $F_2C=CH_2$.

TABLE S4: Equilibrium Rotational Constants (in MHz)

	macct ^a	single ave. scale factor from ω_{obs} ^b	selective scaling on ω_{obs} ^c	single ave. scale factor from v ^d	selective scaling on v ^e
11DFE					
A_e	11050.481	11050.641	11050.681	11054.896	11055.220
B_e	10492.753	10492.933	10493.029	10498.122	10498.426
C_e	5382.2701	5382.3638	5382.3498	5384.9303	5384.8841
Δ	-0.001245	-0.001390	-0.000541	-0.004737	-0.001198
11DFE-1- ¹³ C ₁					
A_e	11050.472	11050.629	11050.674	11054.802	11055.119
B_e	10488.277	10488.454	10488.550	10493.571	10493.874
C_e	5381.0910	5381.1830	5381.1629	5383.7109	5383.6583
Δ	-0.001260	-0.001402	-0.000427	-0.004744	-0.001126
11DFE-2- ¹³ C ₁					
A_e	11050.479	11050.636	11050.668	11054.890	11055.214
B_e	10051.997	10052.168	10052.253	10057.093	10057.383
C_e	5263.8820	5263.9726	5263.9571	5266.4742	5266.4255
Δ	-0.001351	-0.001497	-0.000656	-0.004882	-0.001206
11DFE- d_1					
A_e	10976.941	10977.218	10977.244	10981.587	10981.881
B_e	9598.5955	9598.6807	9598.7440	9603.0424	9603.2737
C_e	5120.8366	5120.9194	5120.9037	5123.2858	5123.2324
Δ	-0.000698	-0.000663	-0.000662	-0.004019	-0.004019
11DFE- d_2					
A_e	10639.590	10639.696	10639.696	10643.899	10644.122
B_e	9042.3129	9042.3832	9042.4371	9046.3829	9046.5916
C_e	4888.1220	4888.1718	4888.1504	4890.3854	4890.3314
Δ	-0.001120	-0.001262	-0.000478	-0.004592	-0.001168

^a Alphas calculated with the macct model.

^b Harmonic contributions to alphas computed with a single average scale factor obtained from the scale factors from fitting force constants to ω_{obs} .

^c Harmonic contributions to alphas computed with the scale factors obtained from fitting force constants to ω_{obs} .

^d Harmonic contributions to alphas computed with a single average scale factor obtained from the scale factors from fitting force constants to v .

^e Harmonic contributions to alphas computed with the scale factors obtained from fitting force constants to v .