

Supplementary Information

Longitudinal Cutting of Pure and Doped Carbon Nanotubes to Form Graphitic Nanoribbons Using Metal Clusters as Nanoscalpels

Ana Laura Elías,¹ Andrés R. Botello-Méndez,¹ David Meneses-Rodríguez,¹ Viviana Jehová González,¹ Daniel Ramírez-González,¹ Lijie Ci,² Emilio Muñoz-Sandoval,¹ Pulickel M. Ajayan,² Humberto Terrones,¹ Mauricio Terrones.^{1*}

¹Laboratory for Nanoscience and Nanotechnology Research (LINAN) and Advanced Materials Department, IPICyT, Camino a la Presa San José 2055, Col. Lomas 4a. sección, San Luis Potosí 78216, SLP, MÉXICO.

²Department of Mechanical Engineering and Materials Science, Rice University, Houston, TX 77005, USA

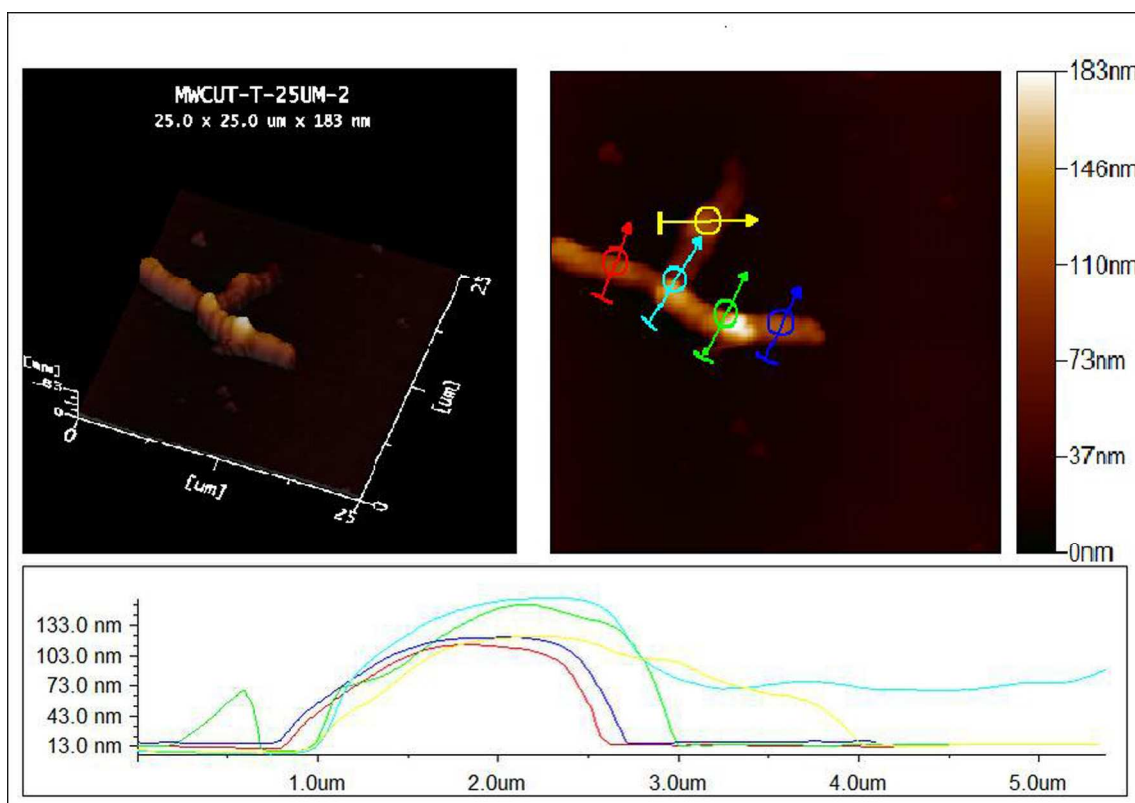


Figure S-1. AFM image of two isolated pristine carbon nanotubes on a Si substrate. We include 5 surface profiles along different lines of nanotubes for control purposes. Note that all the profiles exhibit round cross-sections.

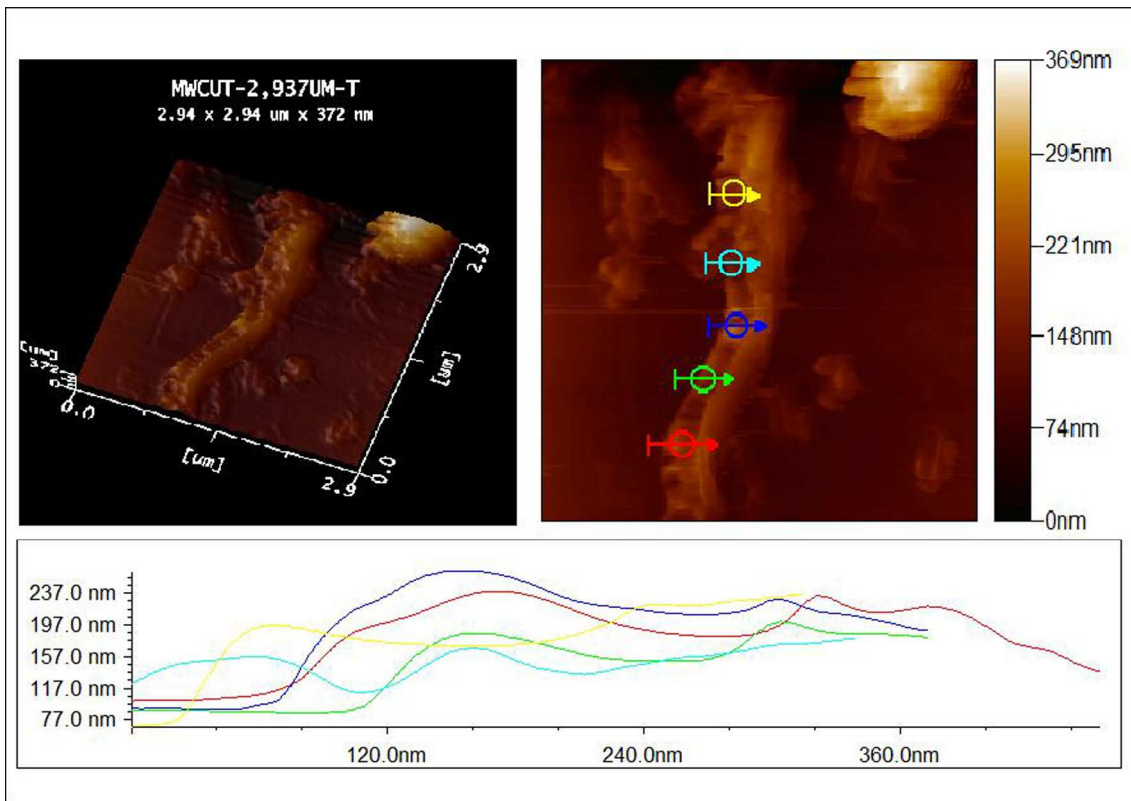


Figure S-2. AFM images of an unzipped CNxMWNT. We include surface profiles along different lines on the cutting. We follow the nanoparticle path by analyzing the surface profile along different line-scans depicted by arrows. Note that all these profiles exhibit a central deep, which corresponds to the central opening created along the tube.

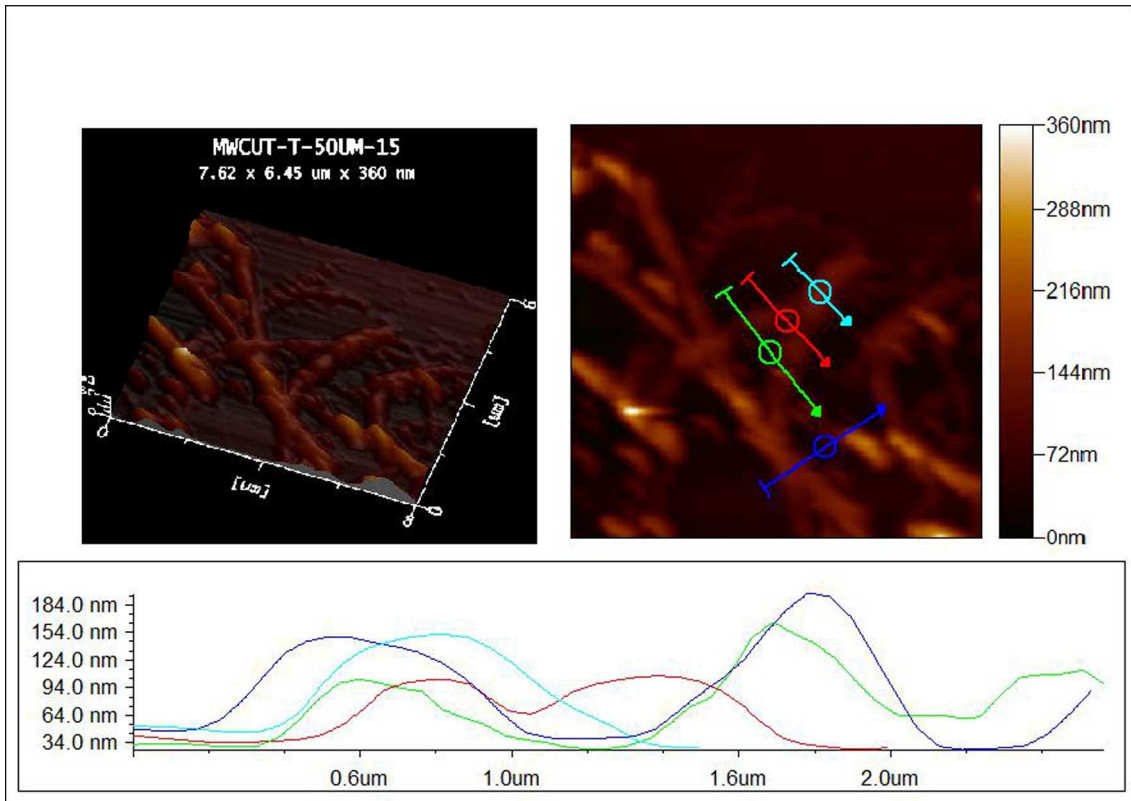


Figure S-3. AFM image of pristine CN_xMWNTs on a Si substrate. We show surface profiles along different lines. Note that all the profiles exhibit round cross-sections and exhibit no deeps in the central regions.