

Bioactive Scalaranes from the Thai Sponge

Hyrtios gumminae

Chulabhorn Mahidol,[†] Hunsa Prawat,^{†} Suwannee Sangpetsiripan[†] and Somsak Ruchirawat^{†‡}*

Chulabhorn Research Institute, Vipavadee Rangsit Highway, Bangkok 10210, Thailand, Chulabhorn Graduate Institute and Center for Environmental Health, Toxicology and Management of Chemicals (ETM), Vipavadee Rangsit Highway, Bangkok 10210, Thailand

Supporting Information

- Figure S1. ¹H NMR (600 MHz, CDCl₃) of the Compound **1**
- Figure S2. ¹³C NMR (150 MHz, CDCl₃) of the Compound **1**
- Figure S3. ¹H NMR (600 MHz, CDCl₃) of the Compound **2**
- Figure S4. ¹³C NMR (150 MHz, CDCl₃) of the Compound **2**
- Figure S5. ¹H NMR (600 MHz, CDCl₃) of the Compound **2a**
- Figure S6. ¹³C NMR (150 MHz, CDCl₃) of the Compound **2a**
- Figure S7. ¹H NMR (600 MHz, CDCl₃) of the Compound **2b**
- Figure S8. ¹³C NMR (150 MHz, CDCl₃) of the Compound **2b**
- Figure S9. HMBC (600 MHz, CDCl₃) of the Compound **2b**
- Figure S10. ¹H NMR (400 MHz, CDCl₃) of the Compound **3**
- Figure S11. ¹³C NMR (100 MHz, CDCl₃) of the Compound **3**
- Figure S12. ¹H NMR (600 MHz, CDCl₃) of the Compound **3a**
- Figure S13. ¹³C NMR (150 MHz, CDCl₃) of the Compound **3a**

- Figure S14. ^1H NMR (600 MHz, CDCl_3) of the Compound **3b**
- Figure S15. ^{13}C NMR (150 MHz, CDCl_3) of the Compound **3b**
- Figure S16. ^1H NMR (600 MHz, pyridine- d_5) of the Compound **4**
- Figure S17. ^{13}C NMR (150 MHz, pyridine- d_5) of the Compound **4**
- Figure S18. ^1H NMR (600 MHz, CDCl_3) of the Compound **4a**
- Figure S19. ^{13}C NMR (150 MHz, CDCl_3) of the Compound **4a**
- Figure S20. ^1H NMR (600 MHz, CDCl_3) of the Compound **4b**
- Figure S21. ^{13}C NMR (150 MHz, CDCl_3) of the Compound **4b**

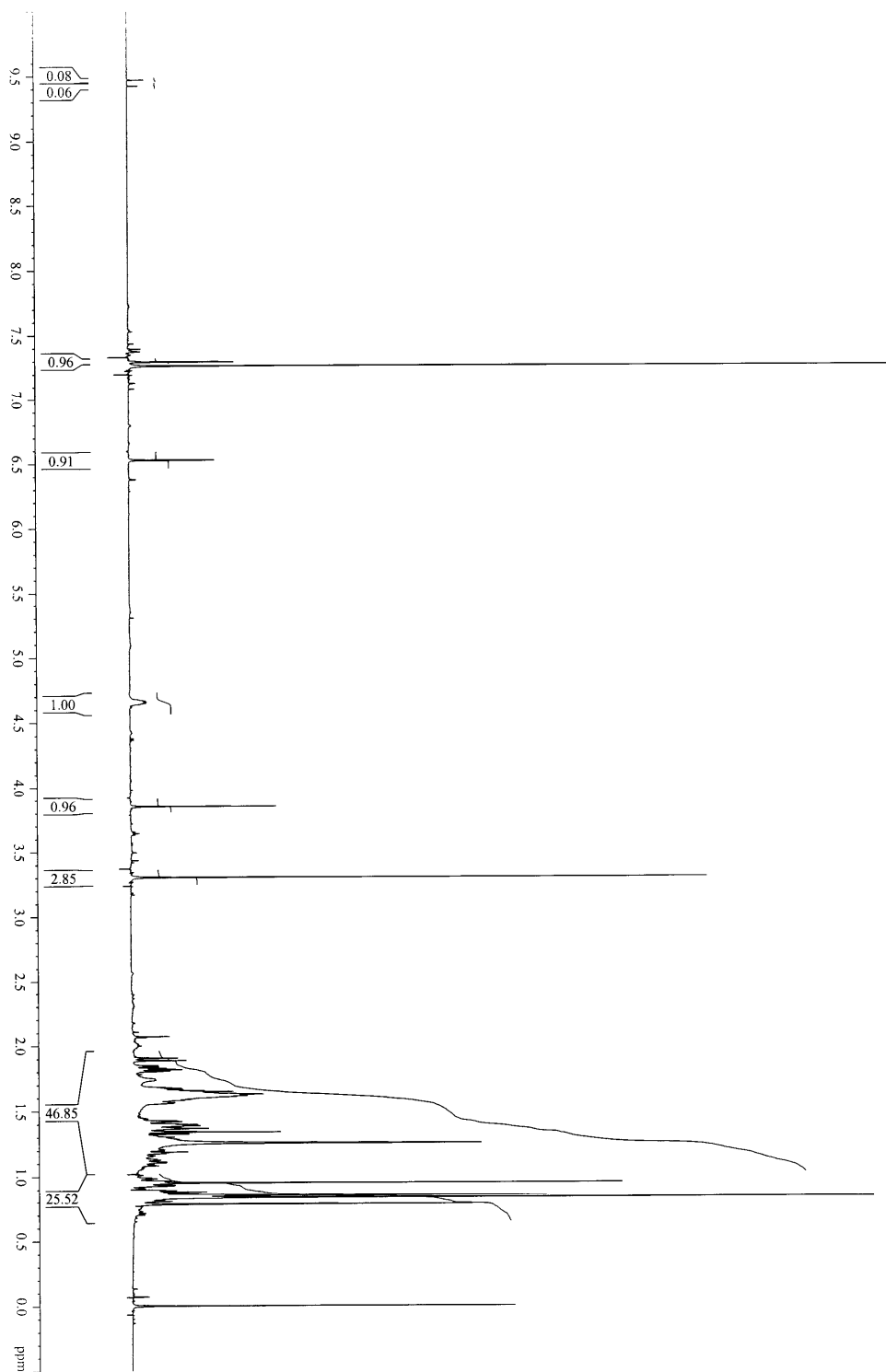


Figure S1. ^1H NMR (600 MHz, CDCl_3) of the Compound 1

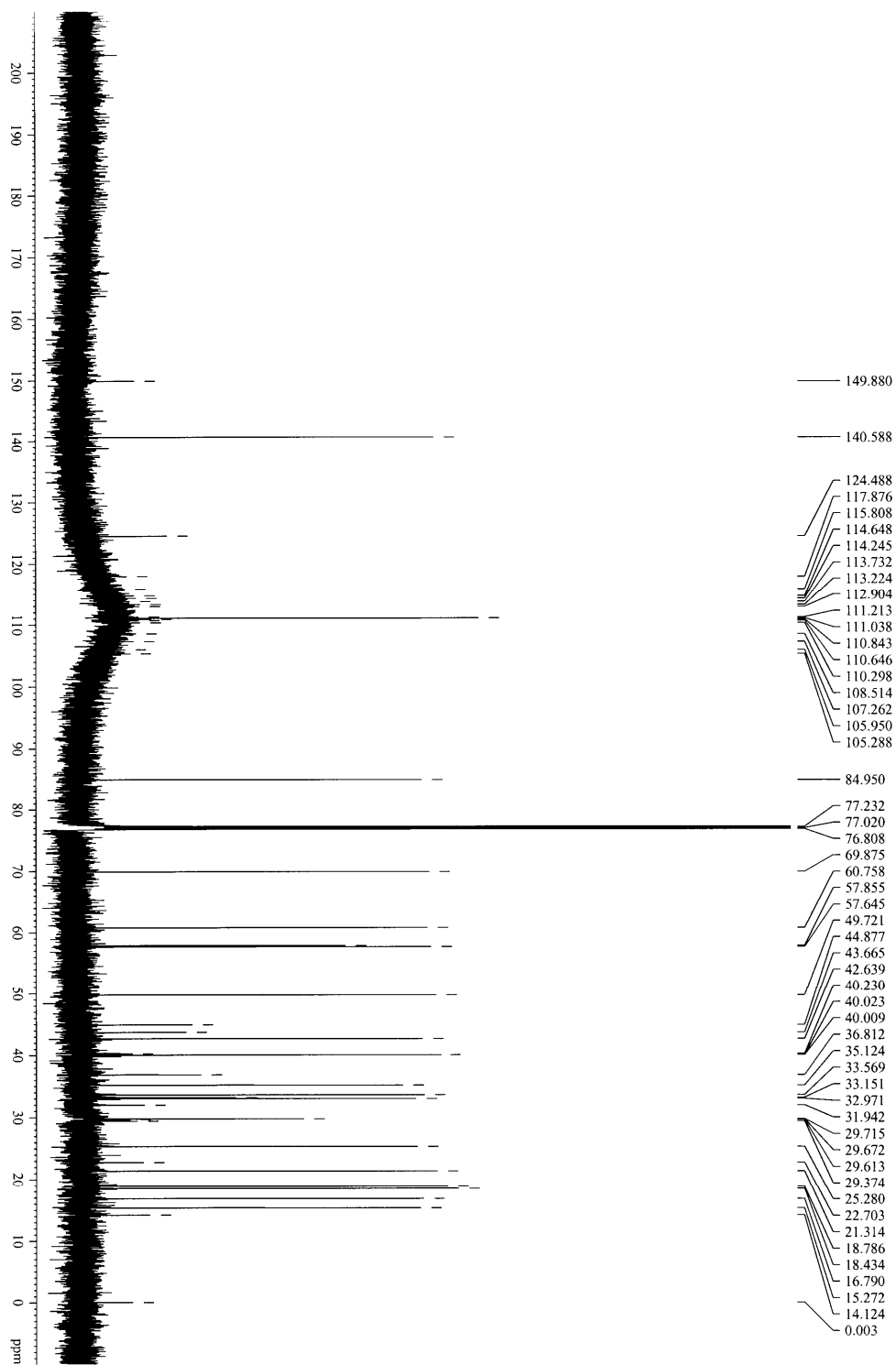


Figure S2. ^{13}C NMR (150 MHz, CDCl_3) of the Compound **1**

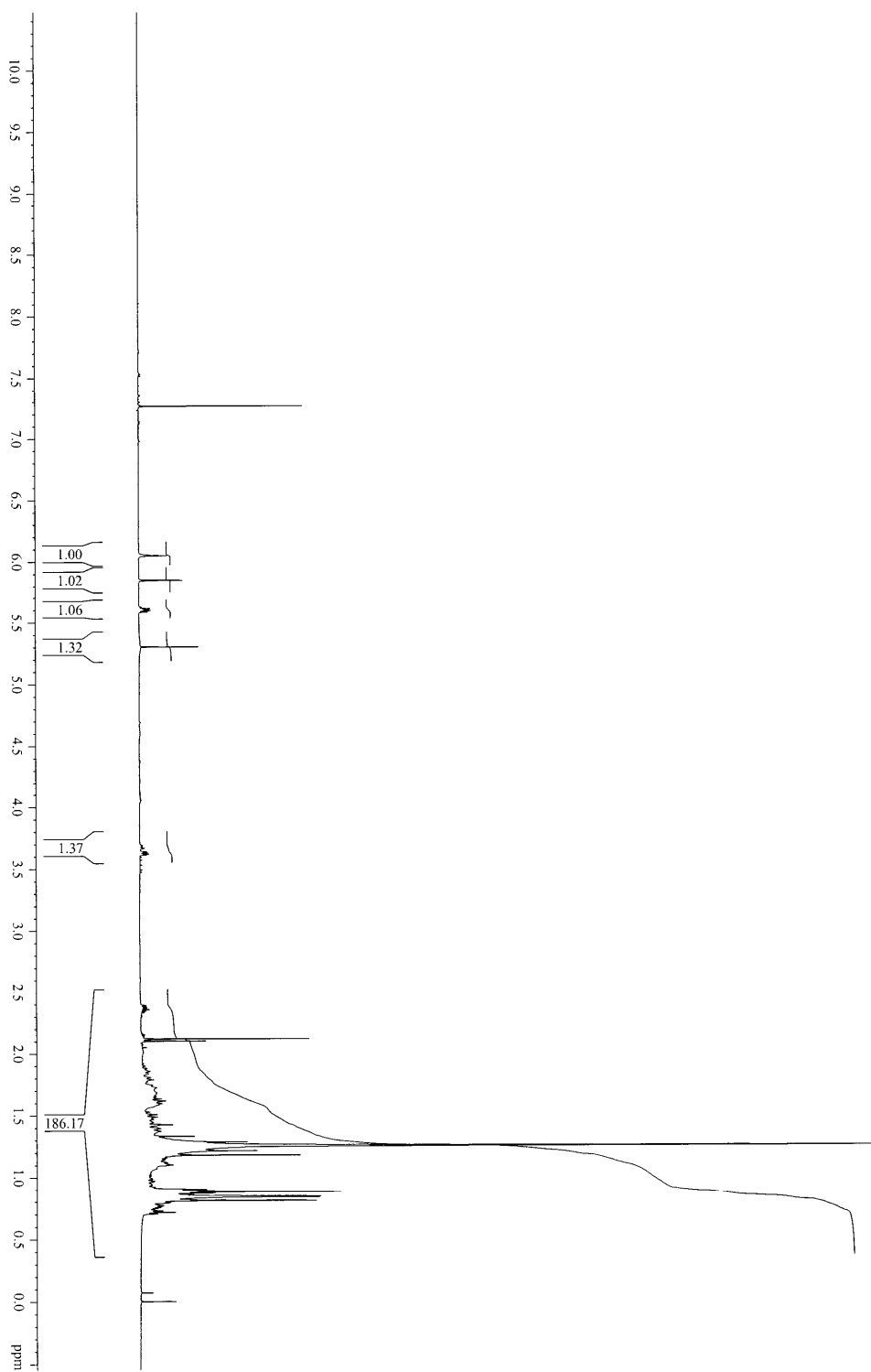


Figure S3. ^1H NMR (600 MHz, CDCl_3) of the Compound 2

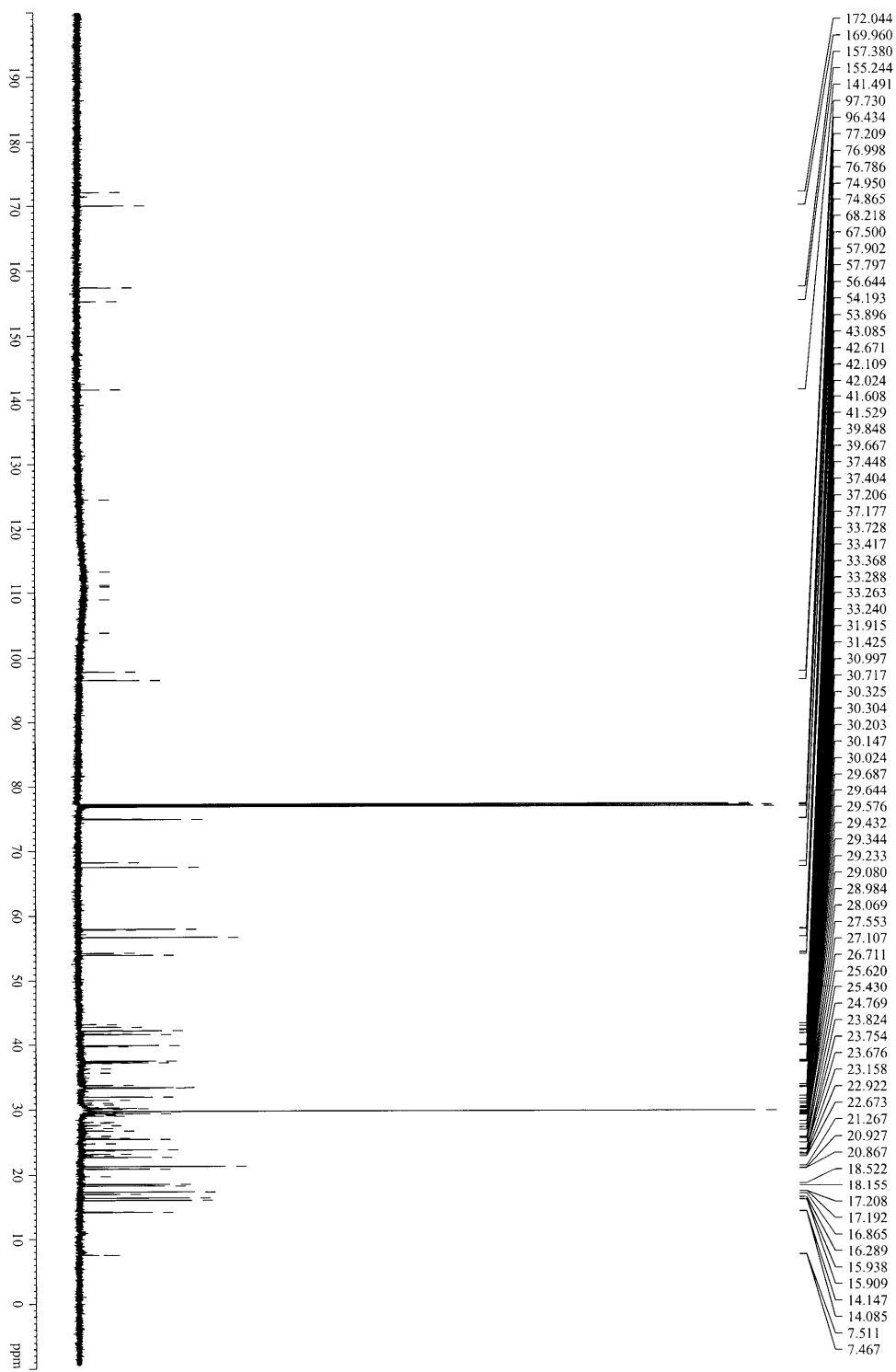


Figure S4. ^{13}C NMR (150 MHz, CDCl_3) of the Compound 2

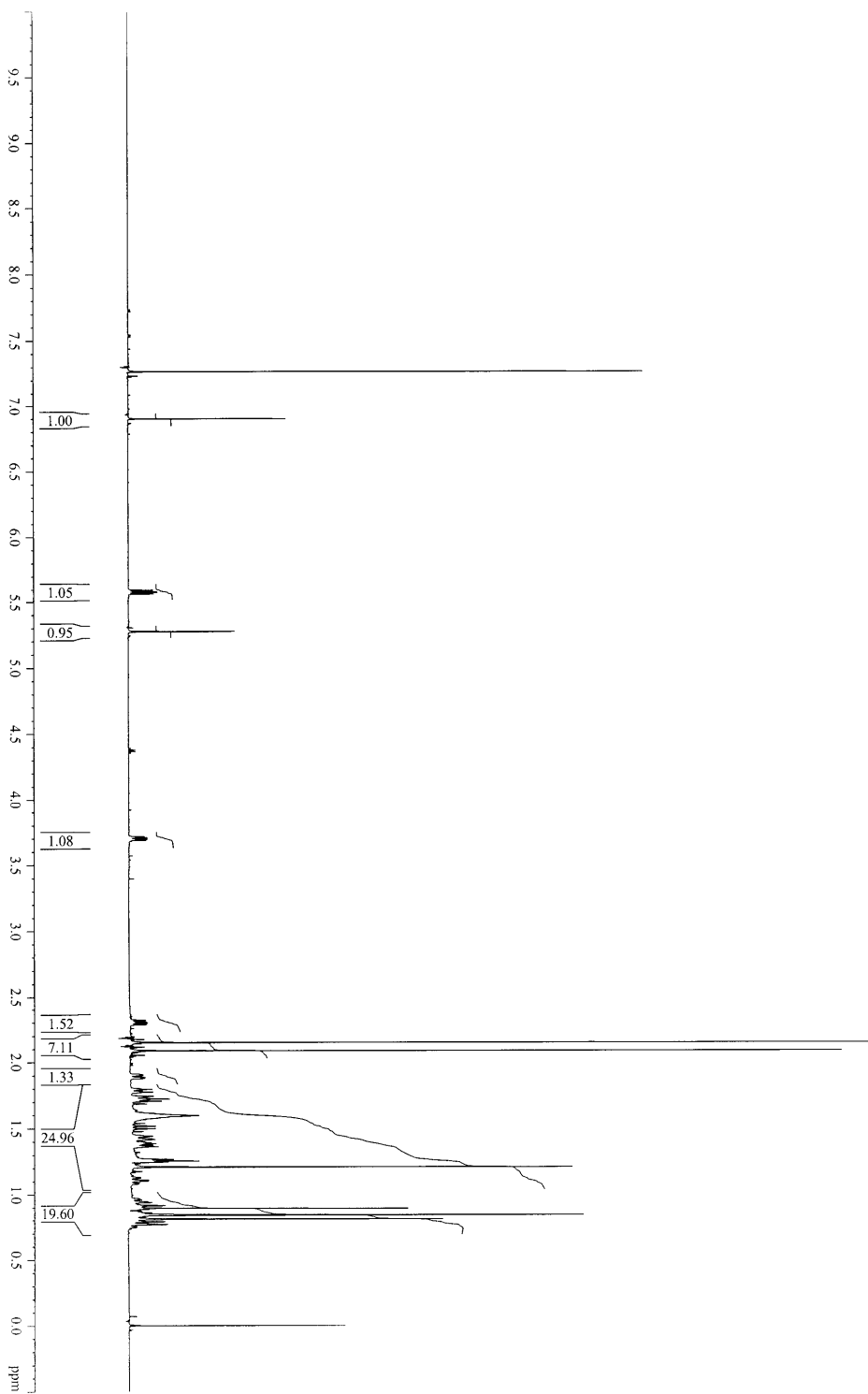


Figure S5. ^1H NMR (600 MHz, CDCl_3) of the Compound **2a**

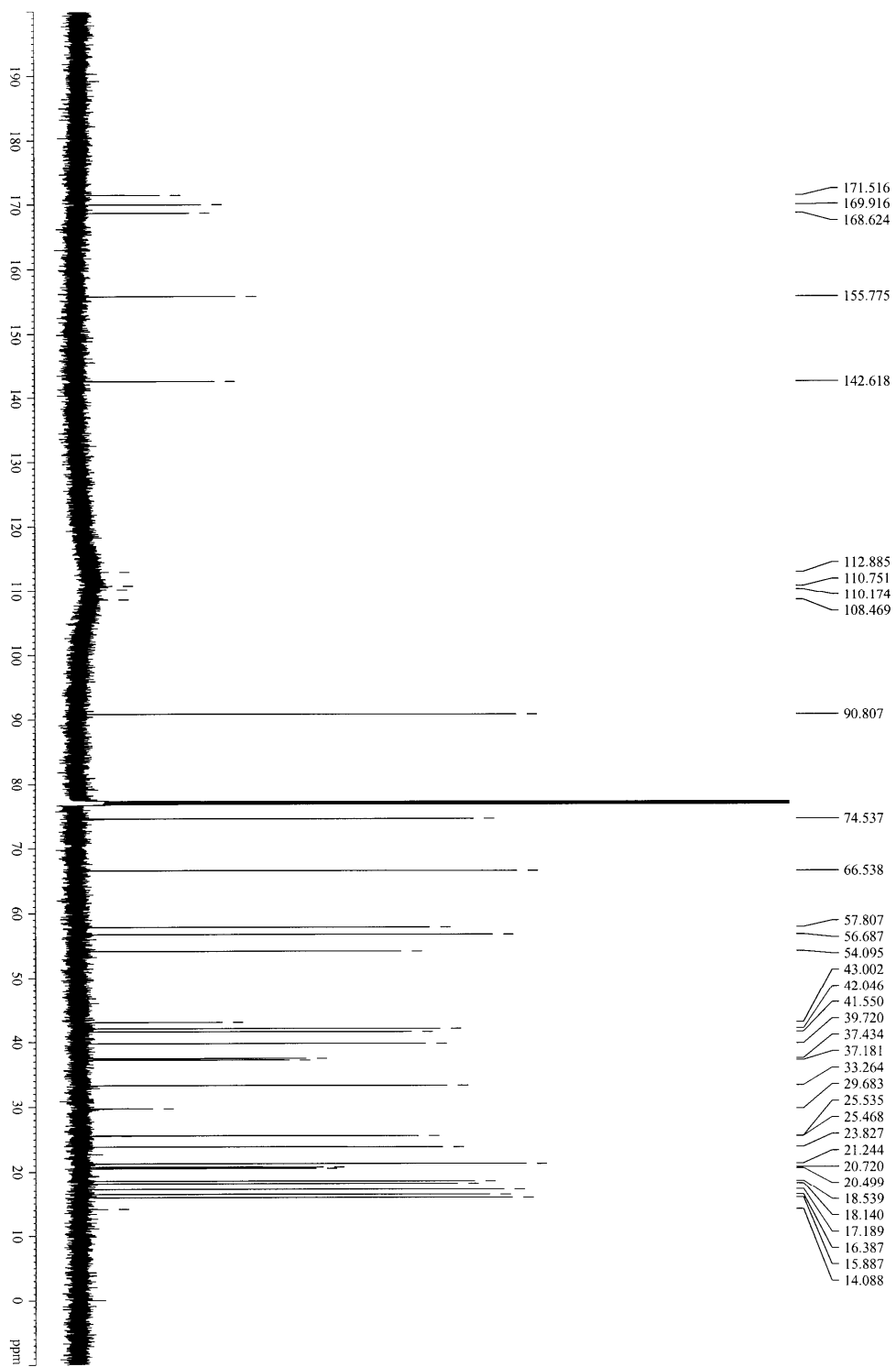


Figure S6. ^{13}C NMR (150 MHz, CDCl_3) of the Compound 2a

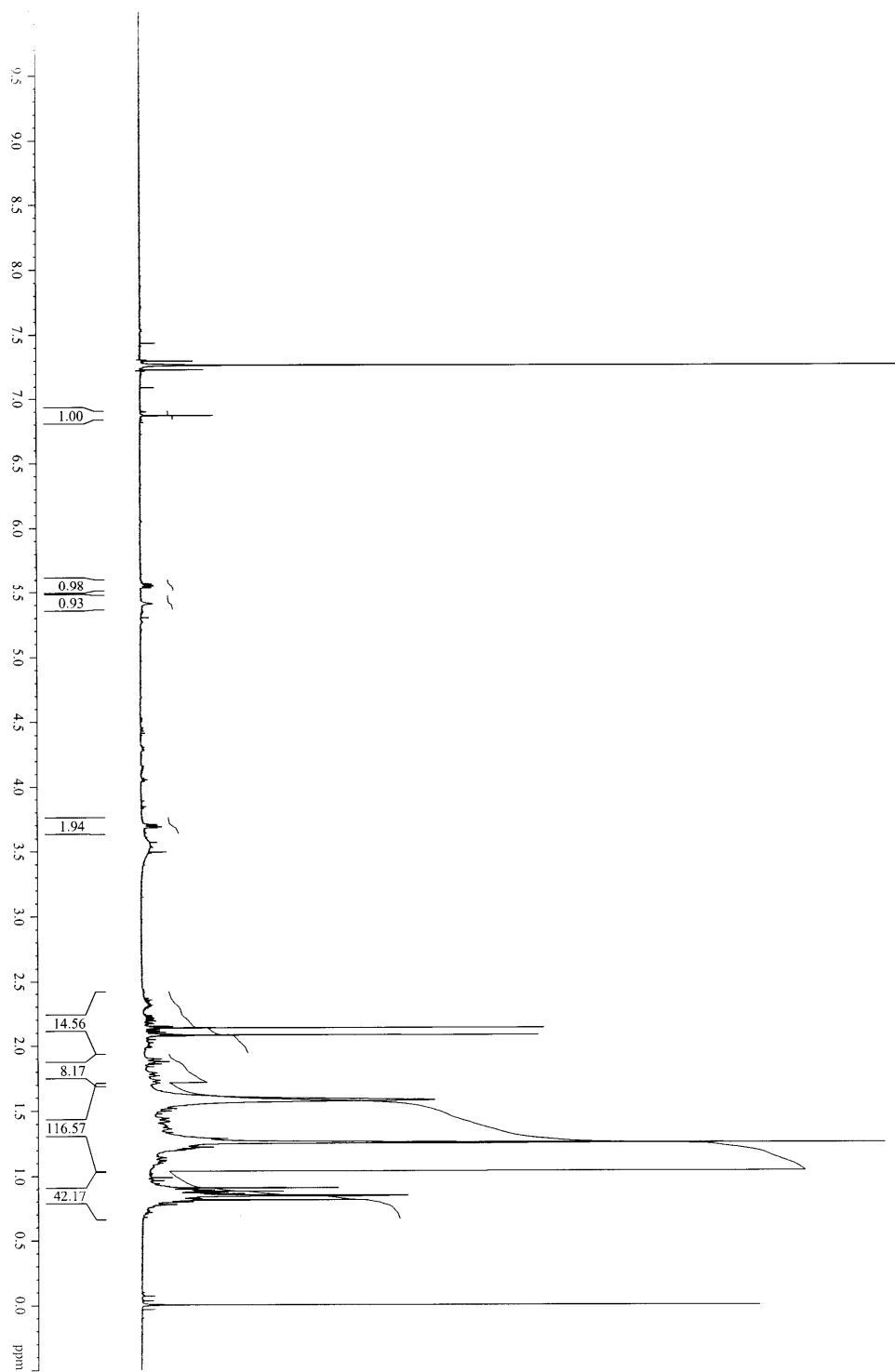


Figure S7. ^1H NMR (600 MHz, CDCl_3) of the Compound **2b**

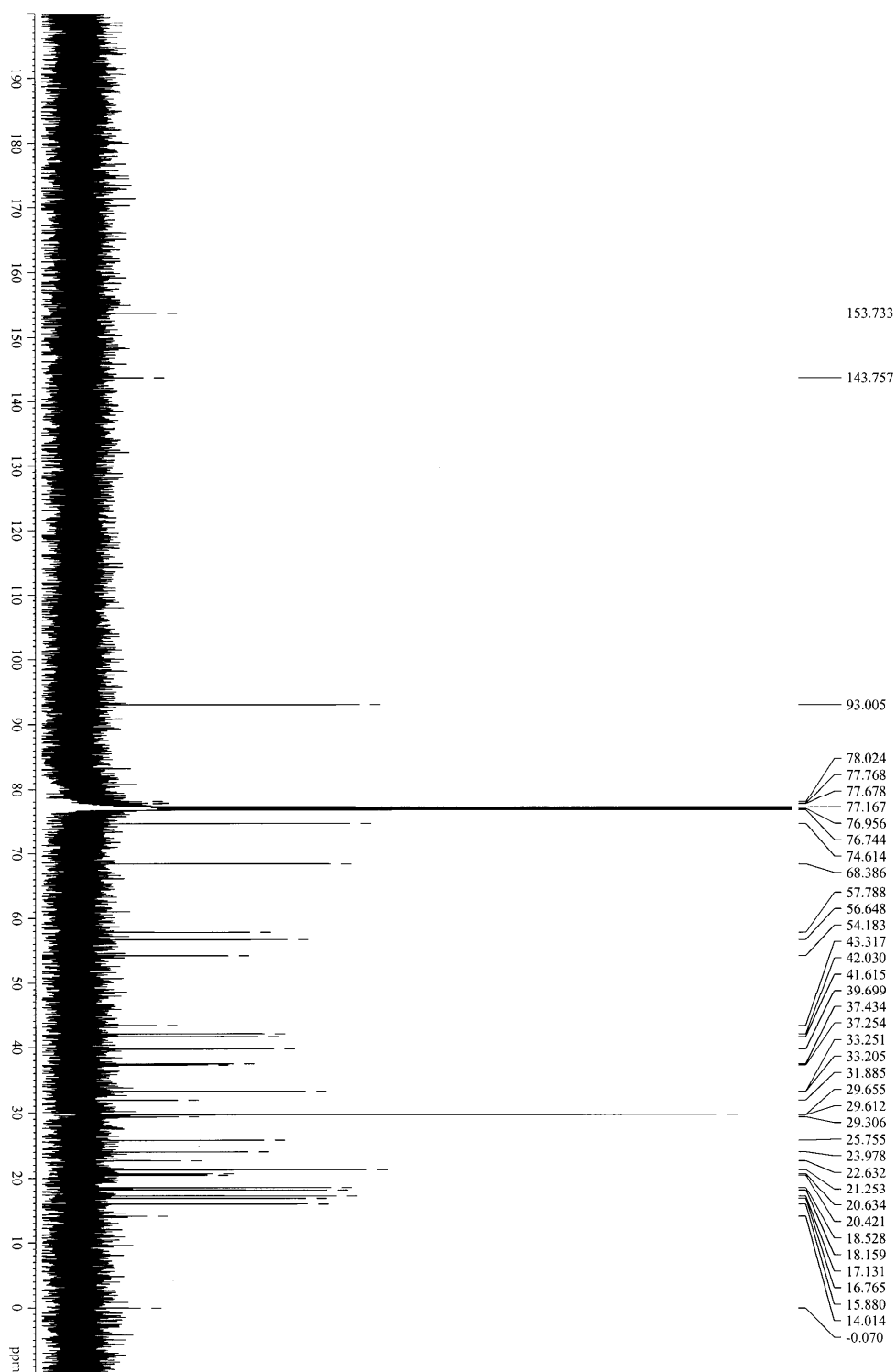


Figure S8. ^{13}C NMR (150 MHz, CDCl_3) of the Compound **2b**

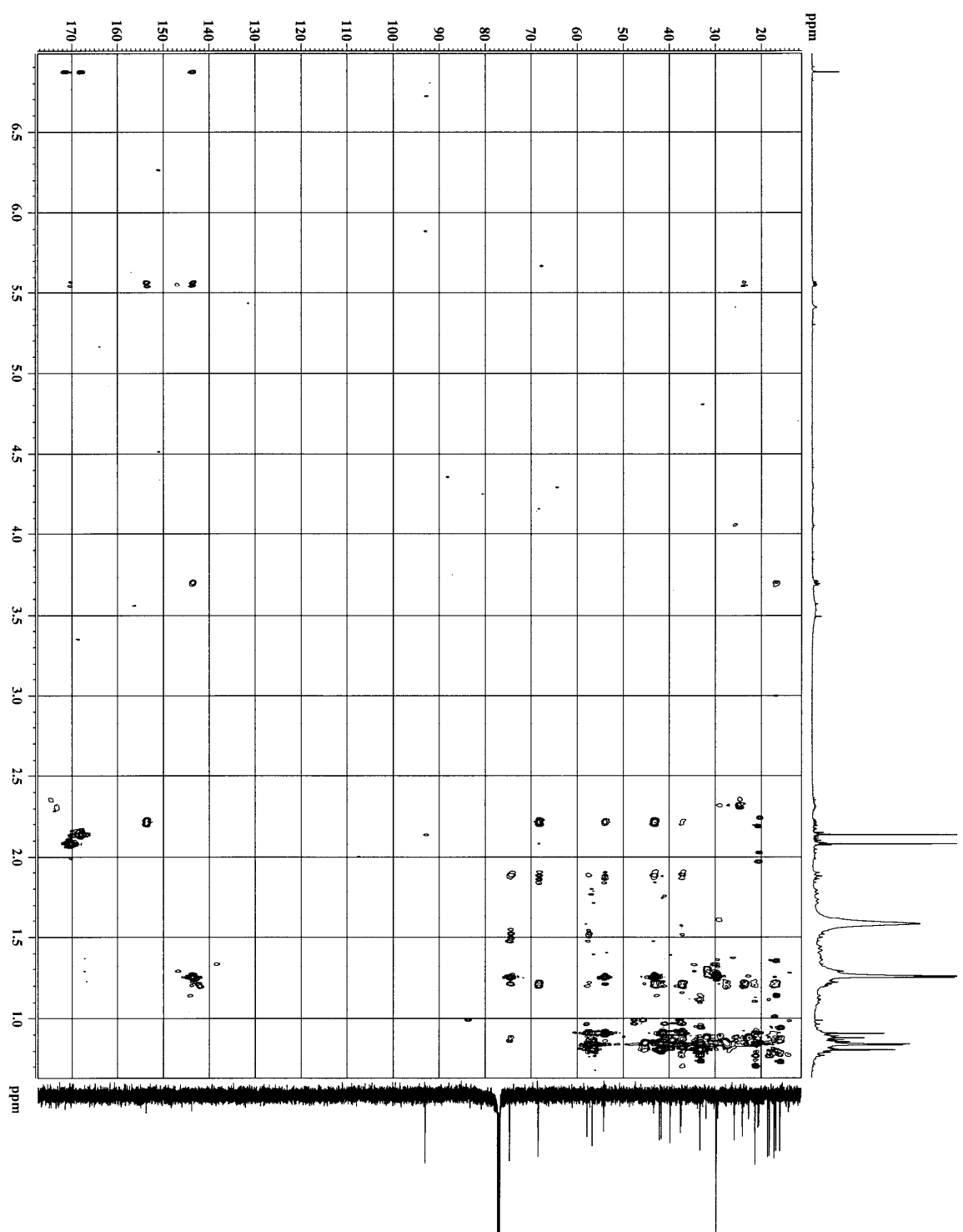


Figure S9. HMBC (600 MHz, CDCl₃) of the Compound 2b

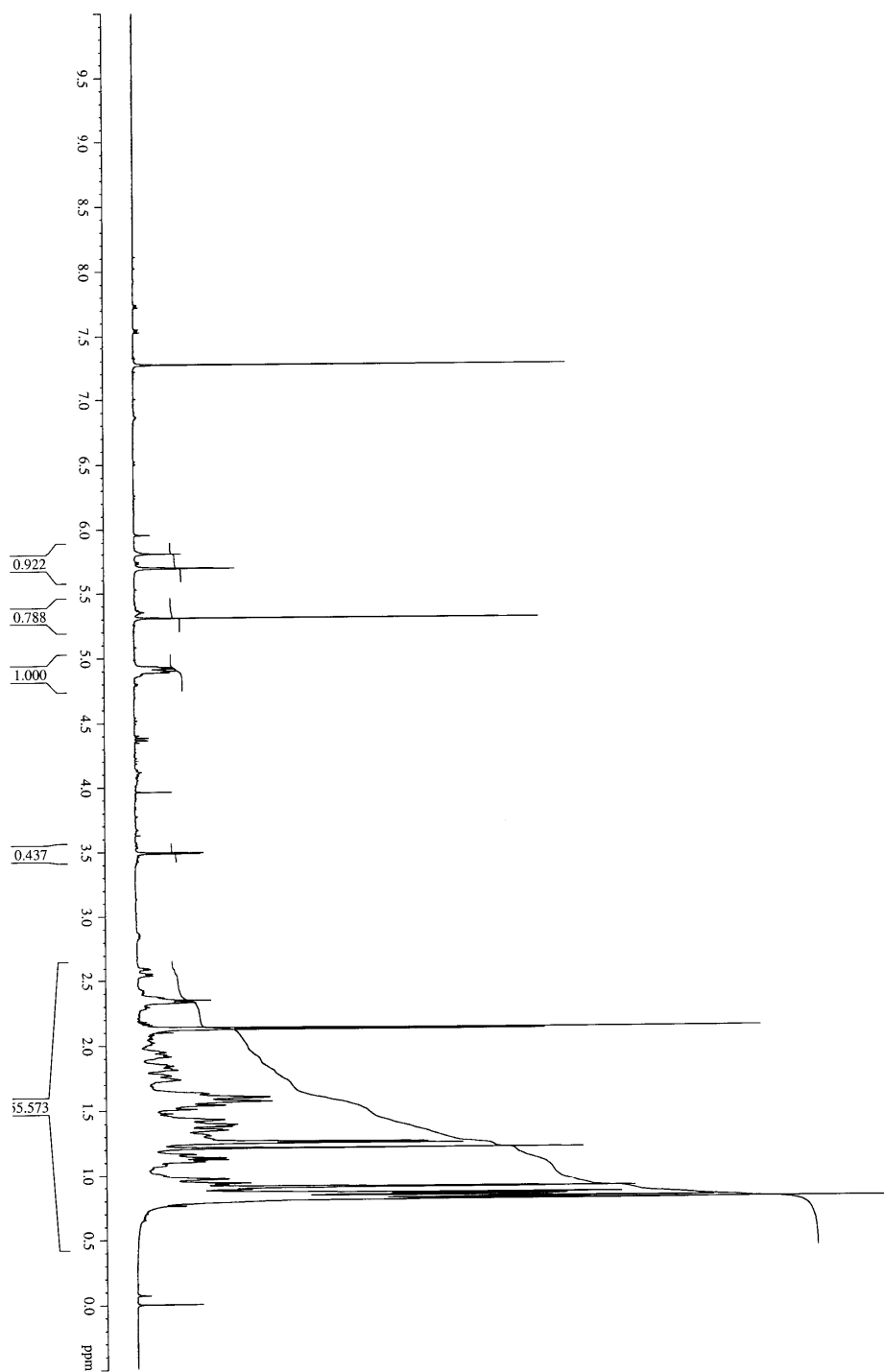


Figure S10. ^1H NMR (400 MHz, CDCl_3) of the Compound **3**

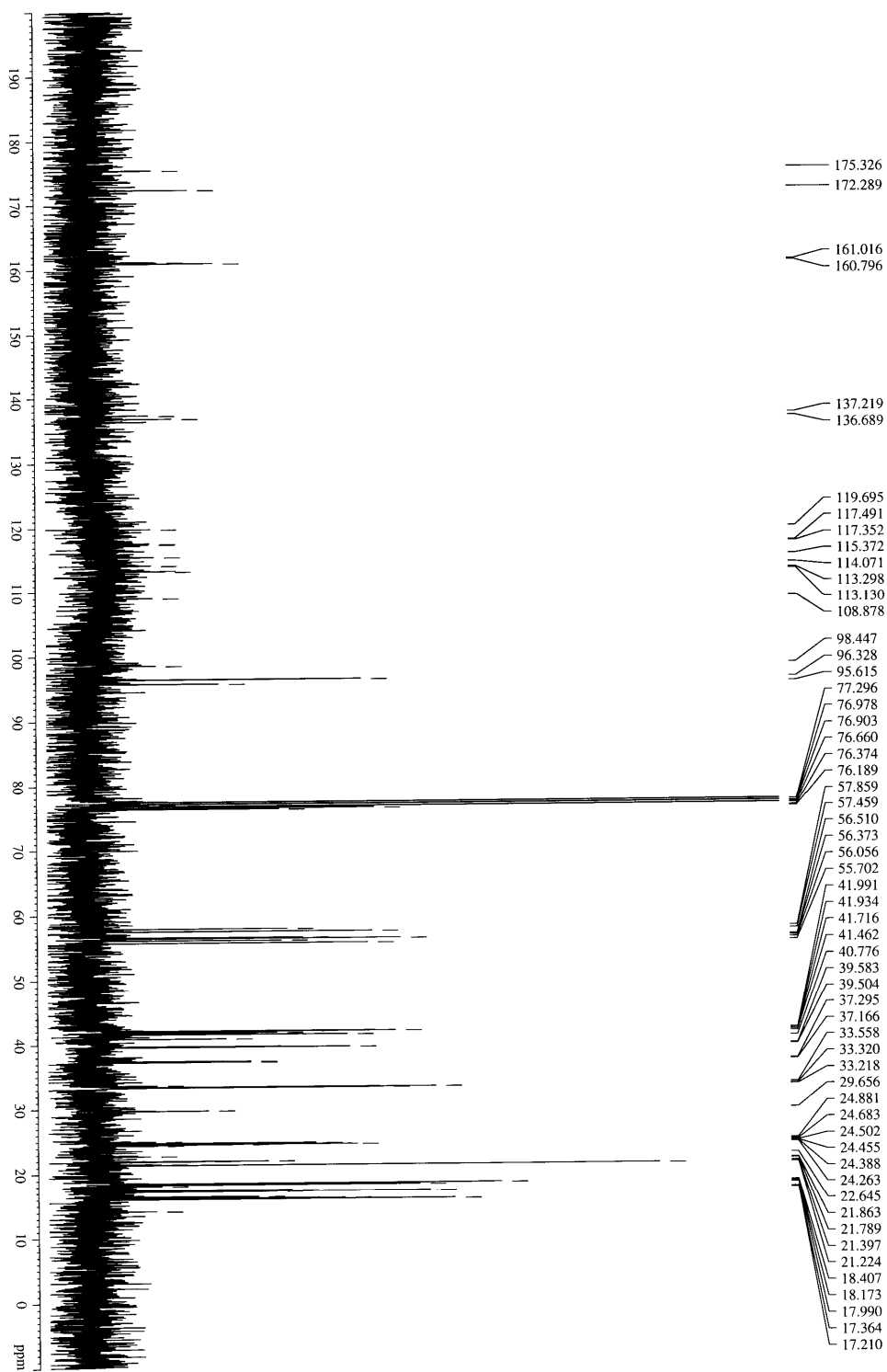


Figure S11. ^{13}C NMR (100 MHz, CDCl_3) of the Compound **3**

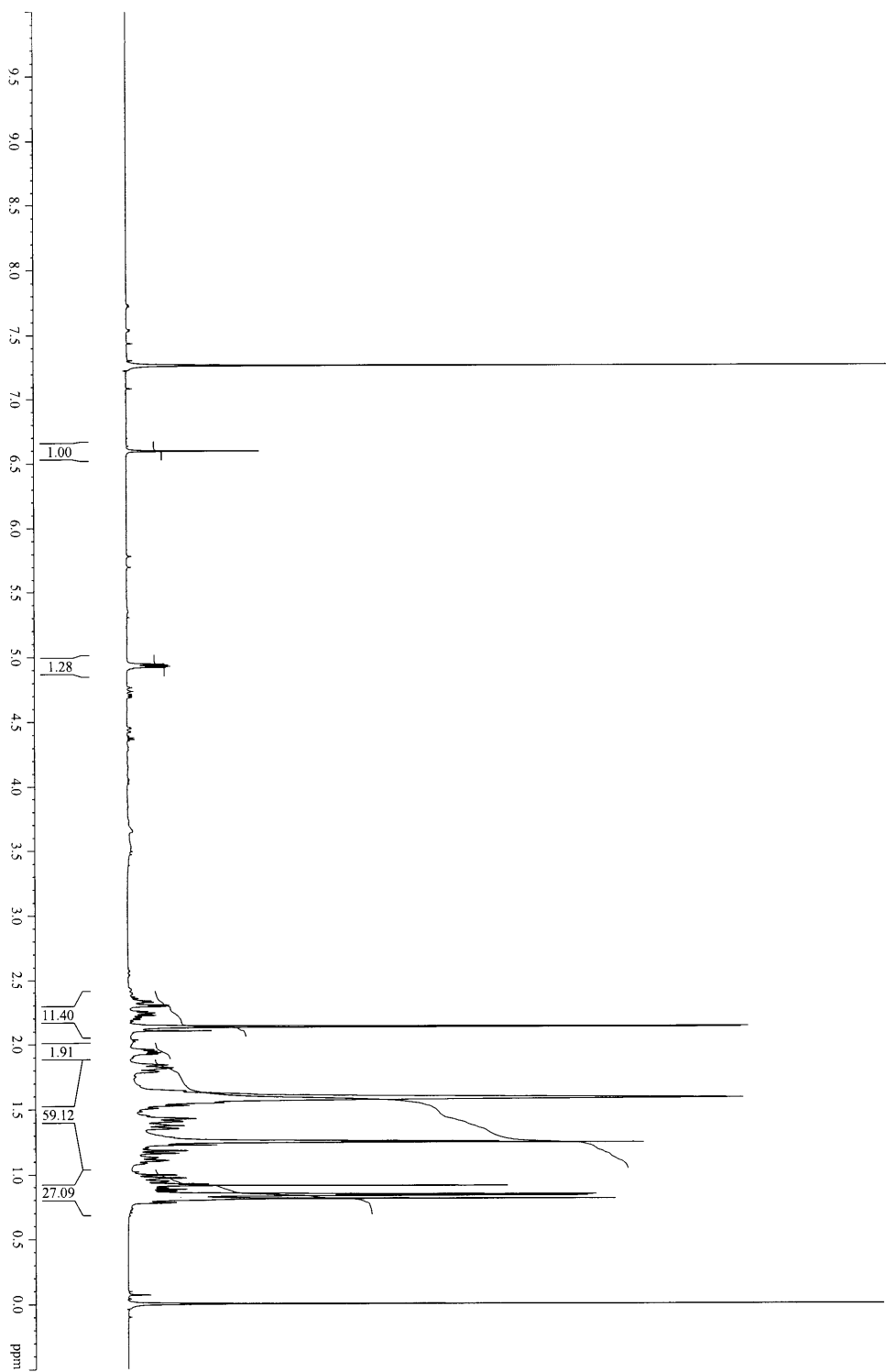


Figure S12. ^1H NMR (600 MHz, CDCl_3) of the Compound **3a**

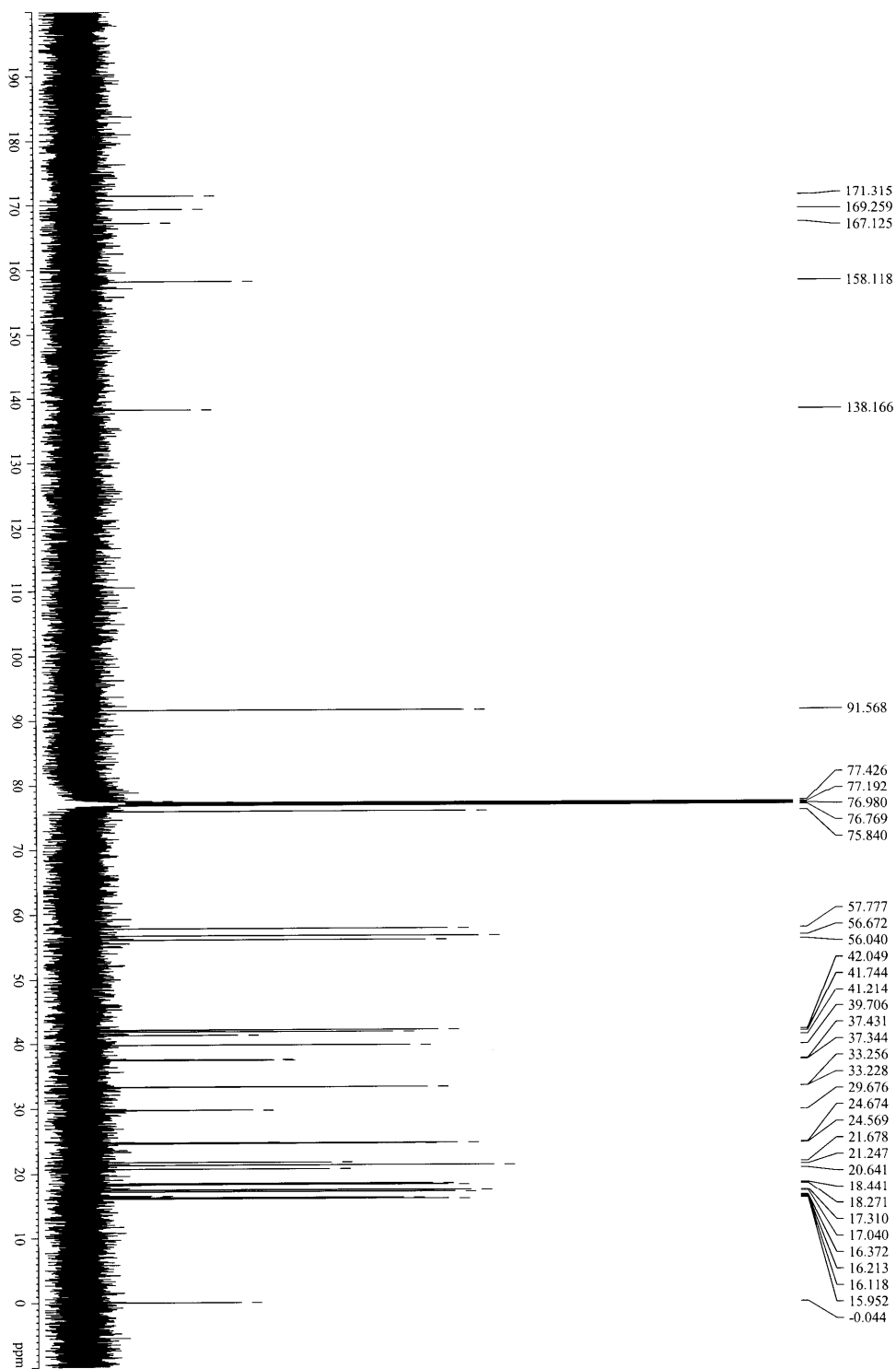


Figure S13. ¹³C NMR (150 MHz, CDCl₃) of the Compound **3a**

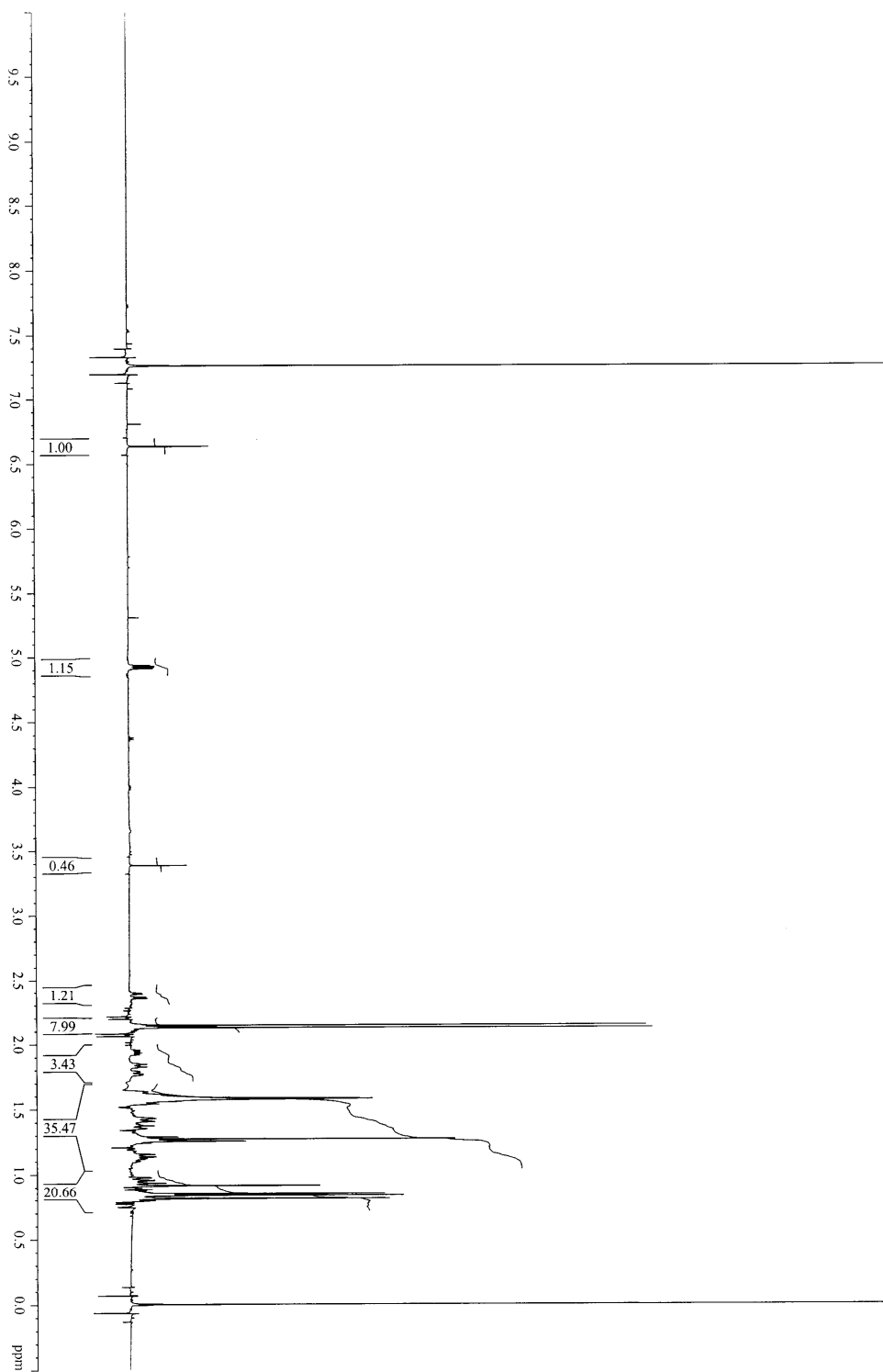


Figure S14. ^1H NMR (600 MHz, CDCl_3) of the Compound **3b**

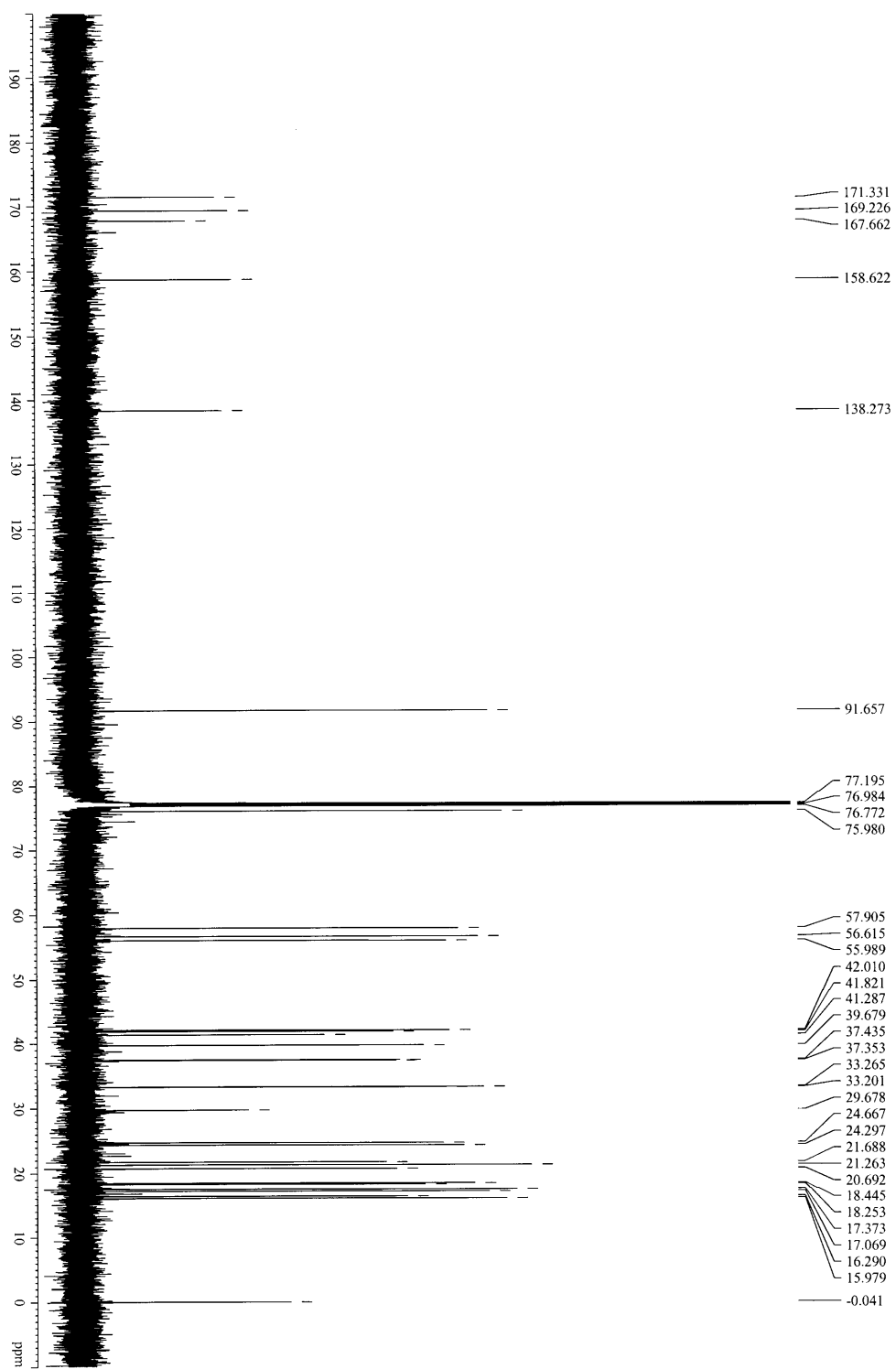


Figure S15. ^{13}C NMR (150 MHz, CDCl_3) of the Compound **3b**

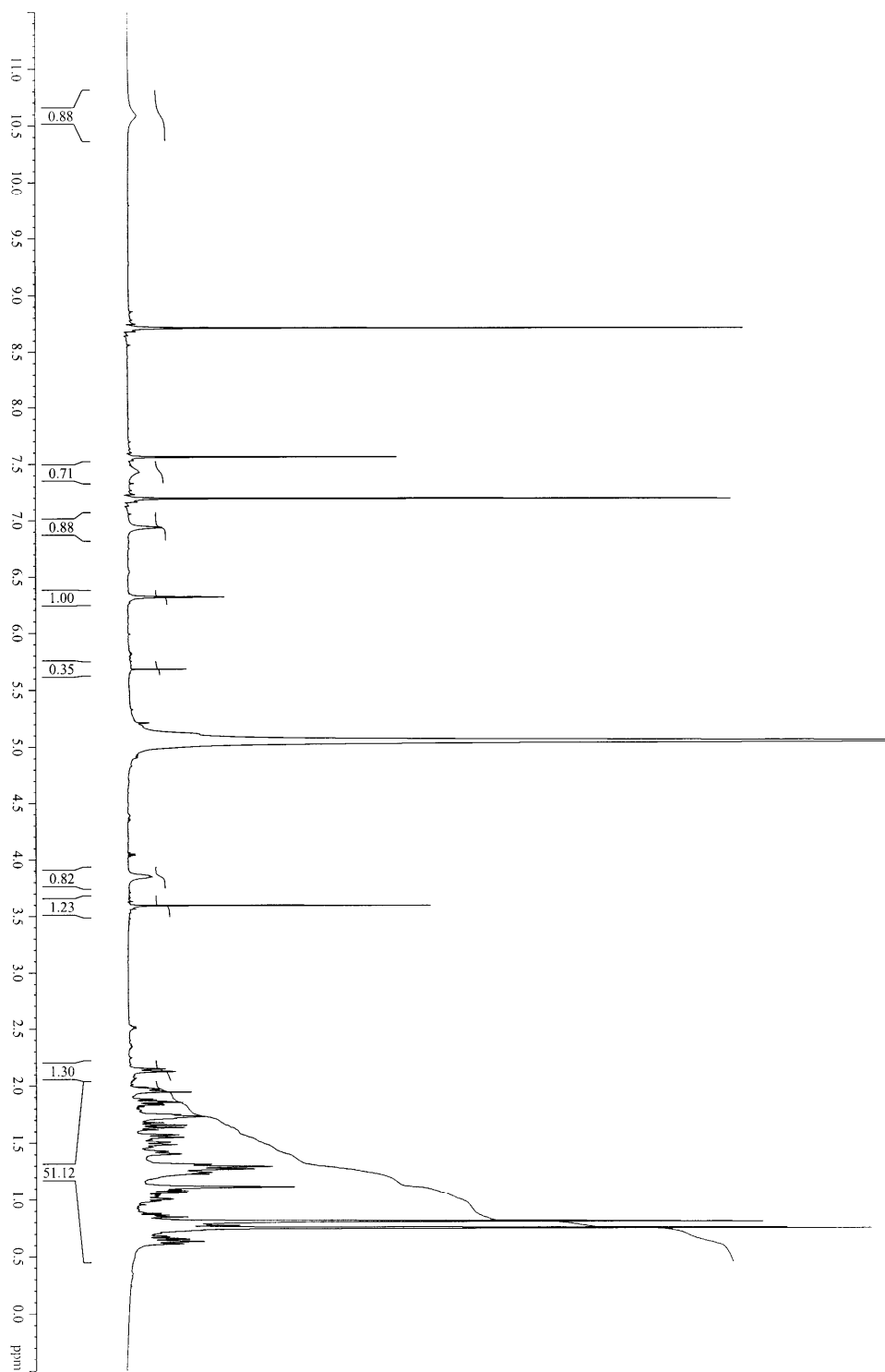


Figure S16. ^1H NMR (600 MHz, pyridine-d_5) of the Compound **4**

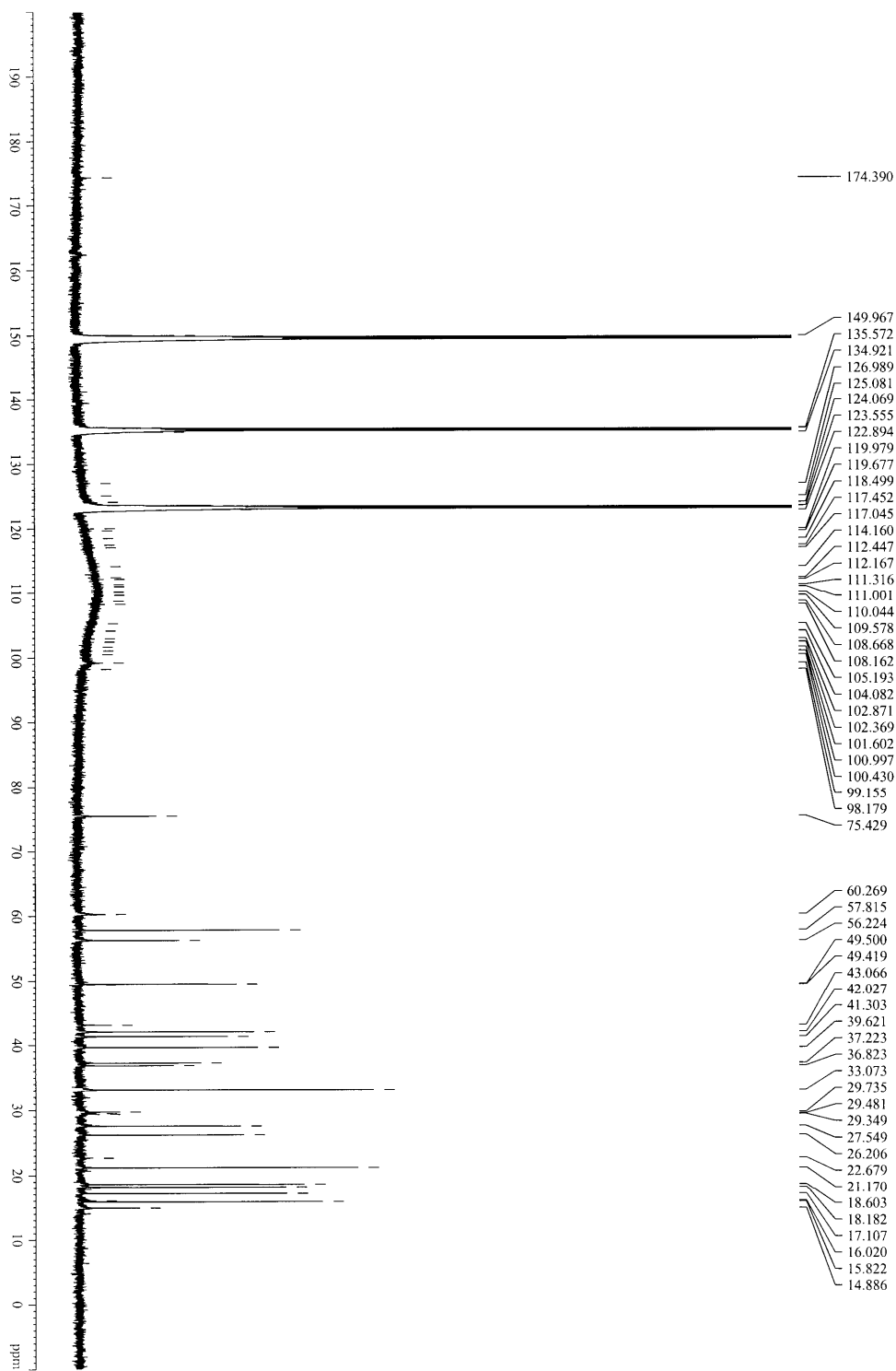


Figure S17. ^{13}C NMR (150 MHz, pyridine- d_5) of the Compound 4

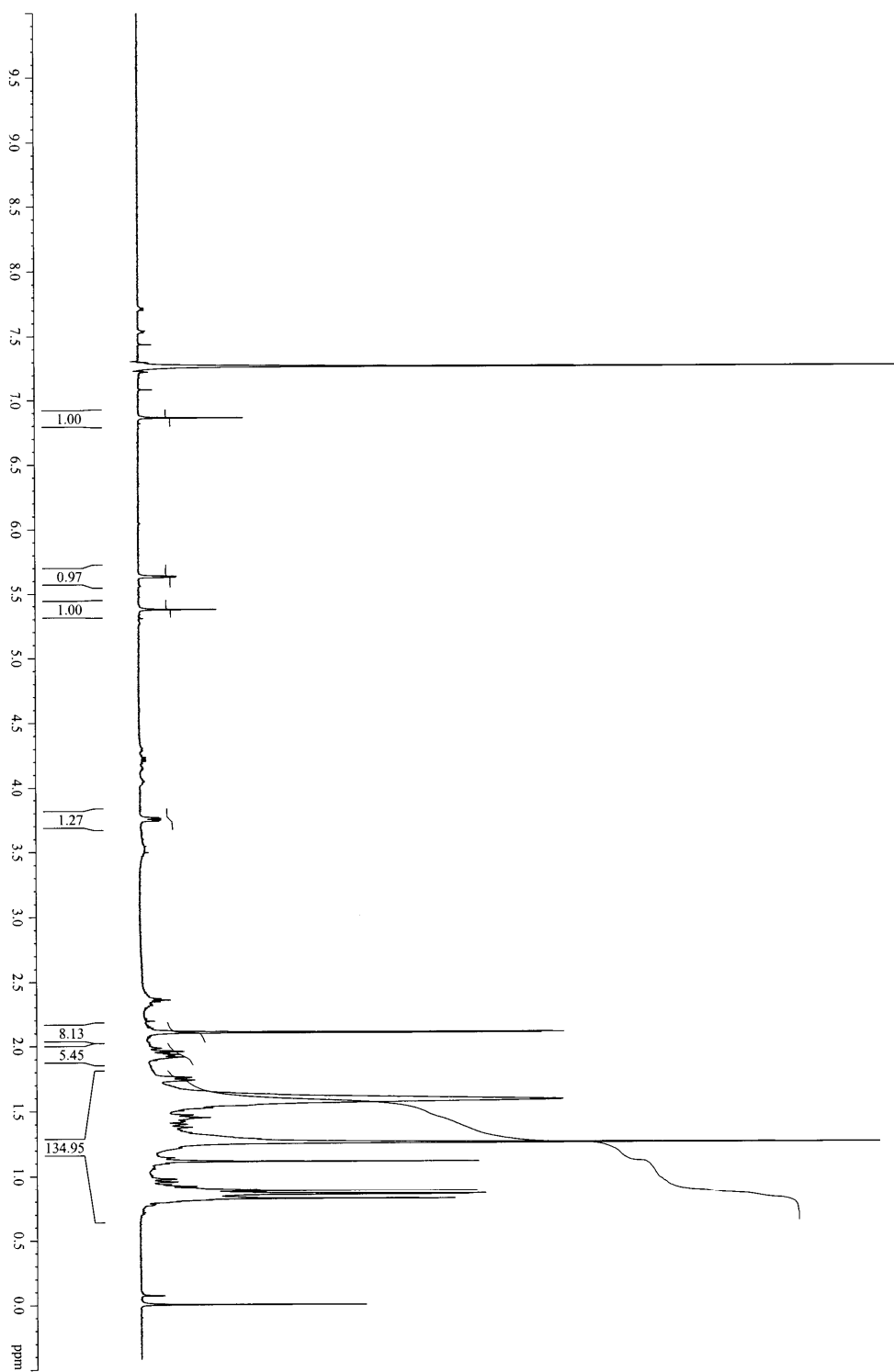


Figure S18. ^1H NMR (600 MHz, CDCl_3) of the Compound **4a**

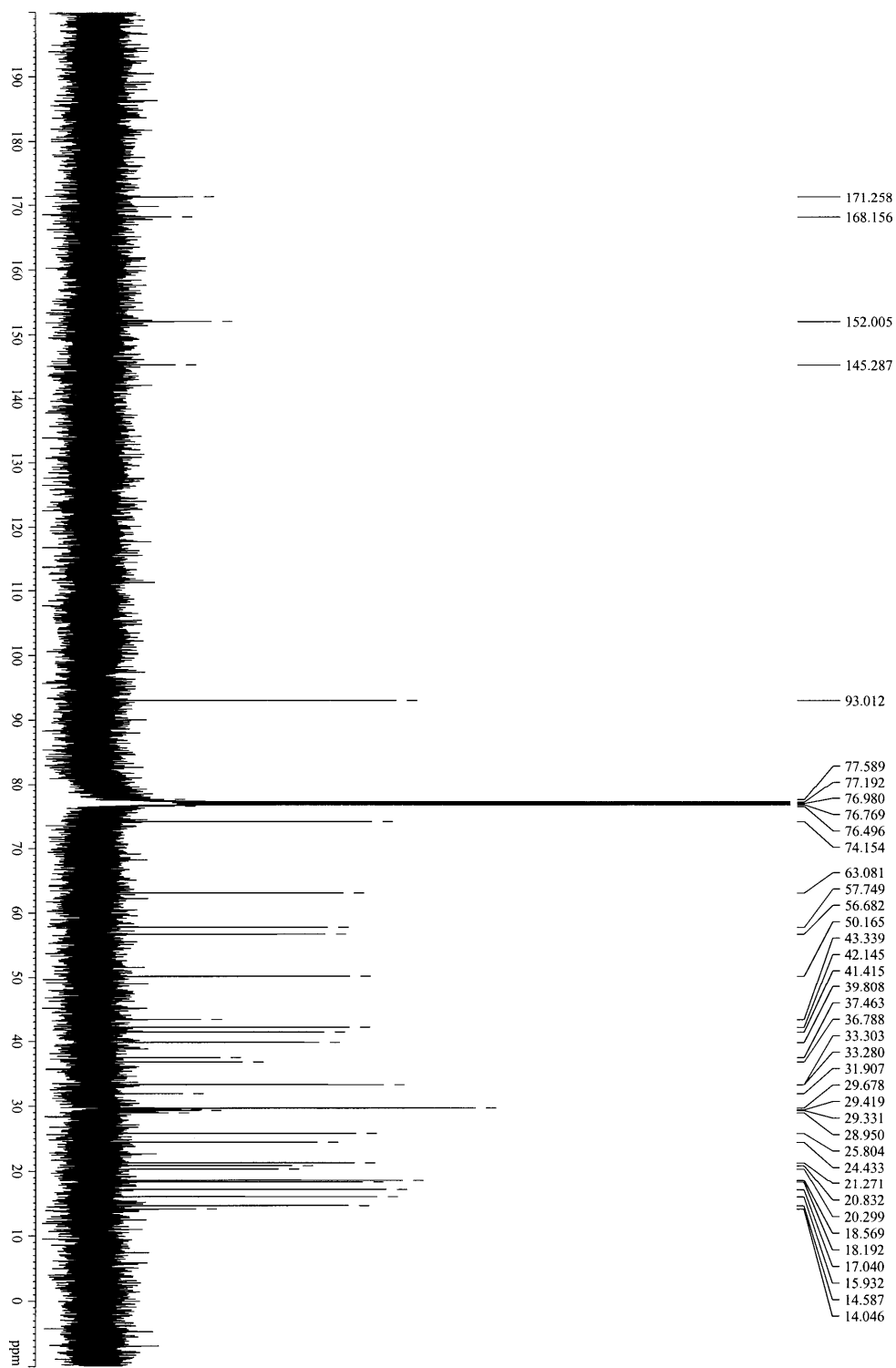


Figure S19. ^{13}C NMR (150 MHz, CDCl_3) of the Compound **4a**

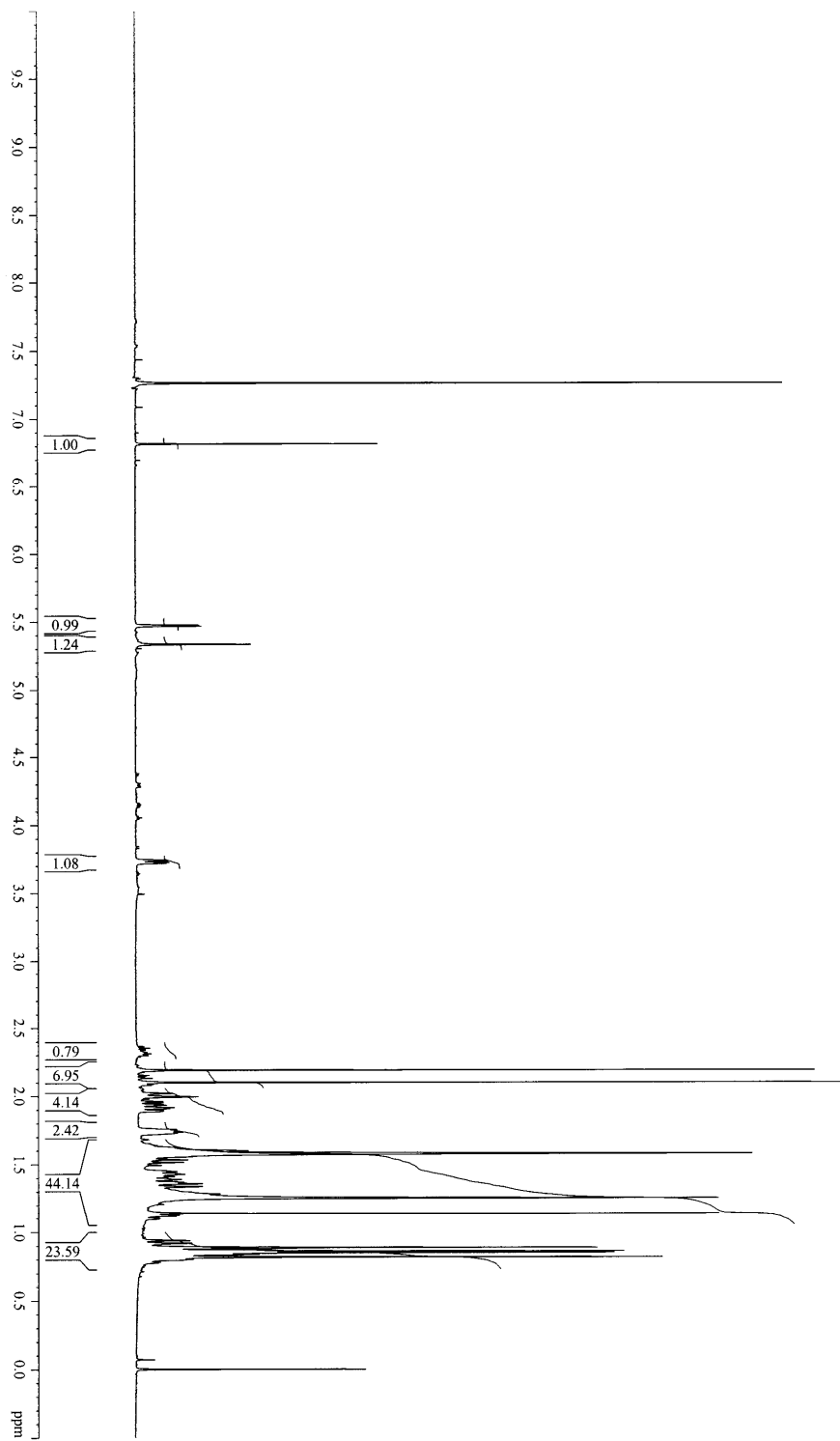


Figure S20. ^1H NMR (600 MHz, CDCl_3) of the Compound **4b**

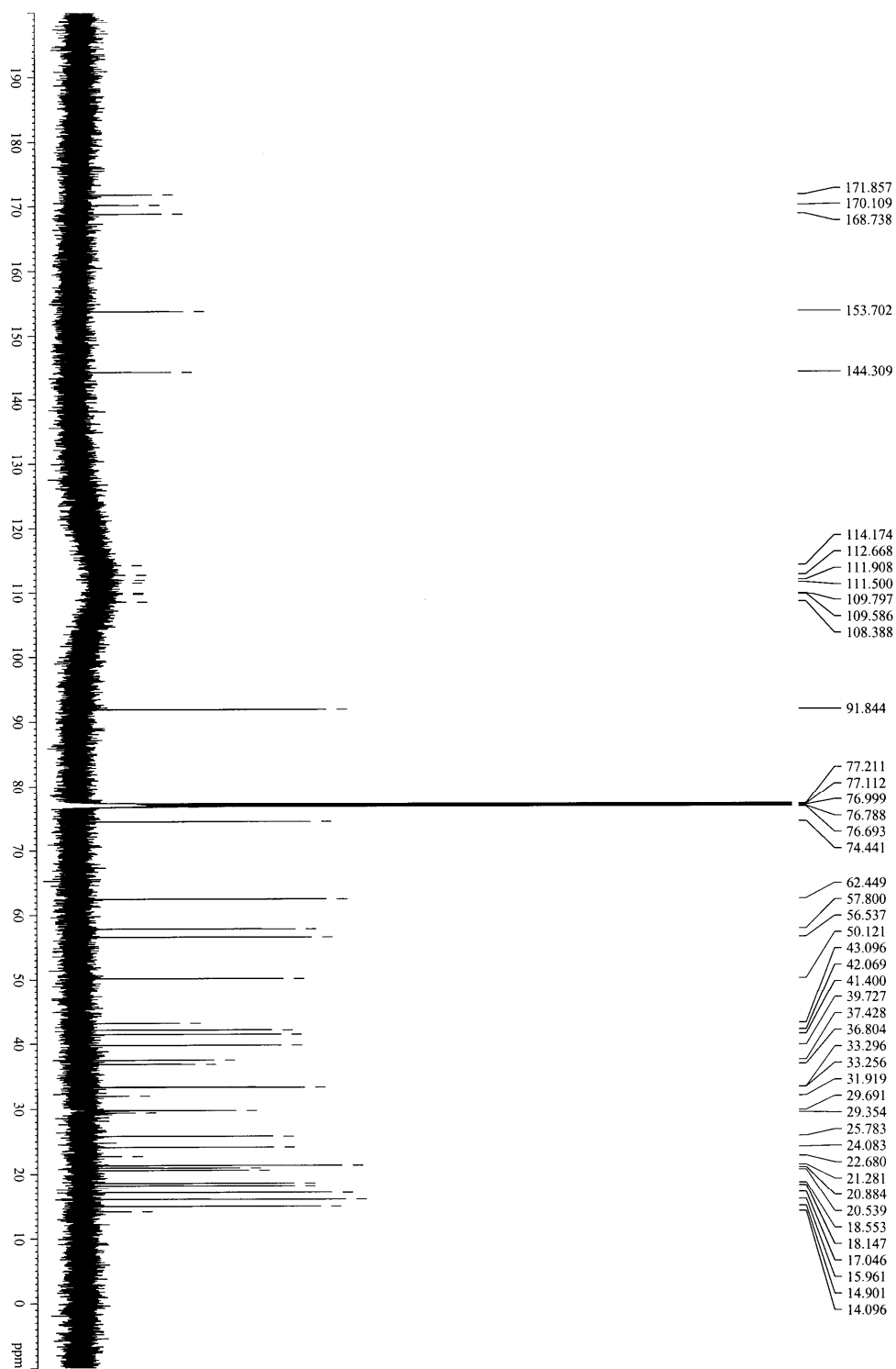


Figure S21. ^{13}C NMR (150 MHz, CDCl_3) of the Compound **4b**