

## Supporting Information

**Oxalate-bridged Bimetallic Complexes {NH(prot)<sub>3</sub>}[MCr(ox)<sub>3</sub>] (M = Mn<sup>II</sup>, Fe<sup>II</sup>, Co<sup>II</sup>;  
NH(prot)<sub>3</sub><sup>+</sup> = Tri(3-hydroxypropyl)ammonium) Exhibiting Coexistent Ferromagnetism  
and Proton Conduction**

Hisashi Ōkawa,<sup>\*,†,§</sup> Akihito Shigematsu,<sup>†</sup> Masaaki Sadakiyo,<sup>†,#</sup> Takuya Miyagawa,<sup>‡</sup> Ko Yoneda,<sup>‡</sup>  
Masaaki Ohba,<sup>‡,§</sup> and Hiroshi Kitagawa<sup>\*,†,§,#</sup>

<sup>†</sup>*Department of Chemistry, Faculty of Science, Kyushu University, Hakozaki 8-10-1, Higashi-ku, Fukuoka 812-8581, Japan.* <sup>‡</sup>*Department of Synthetic Chemistry and Biological Chemistry, Graduate School of Engineering, Kyoto University, Katsura, Nishikyo-ku, Kyoto 615-8510, Japan.* <sup>§</sup>*JST-CREST, Sanban-cho 5, Chiyoda-ku, Tokyo 102-0075, Japan.* <sup>#</sup>*Department of Chemistry, Graduate School of Science, Kyoto University, Kitashirakawa-Oiwakecho, Sakyo-ku, Kyoto 606-8502, Japan.*

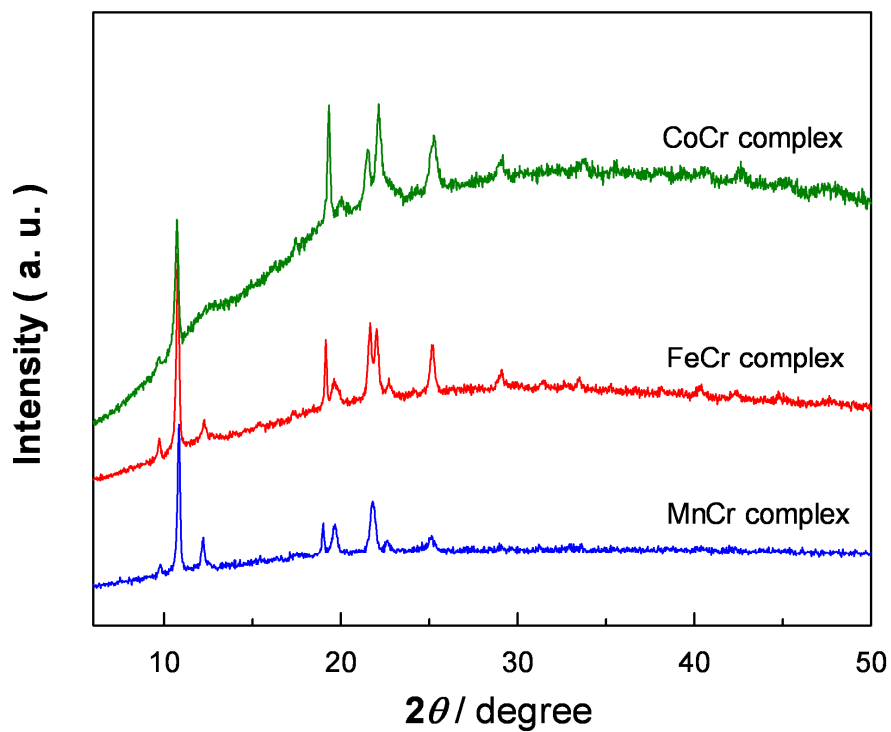


Figure S1. Powder X-ray diffraction spectra of the complexes.

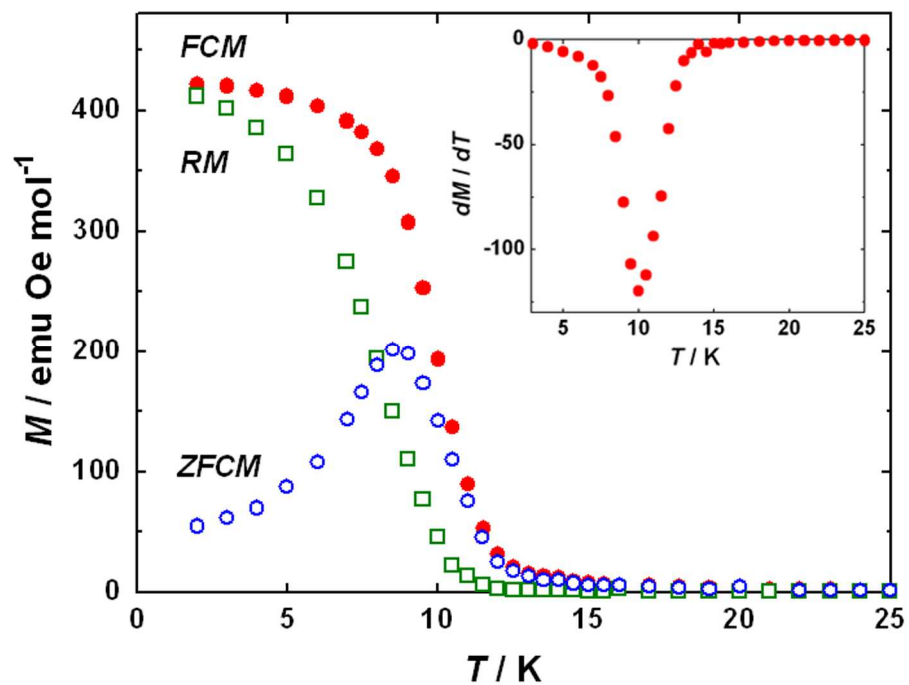
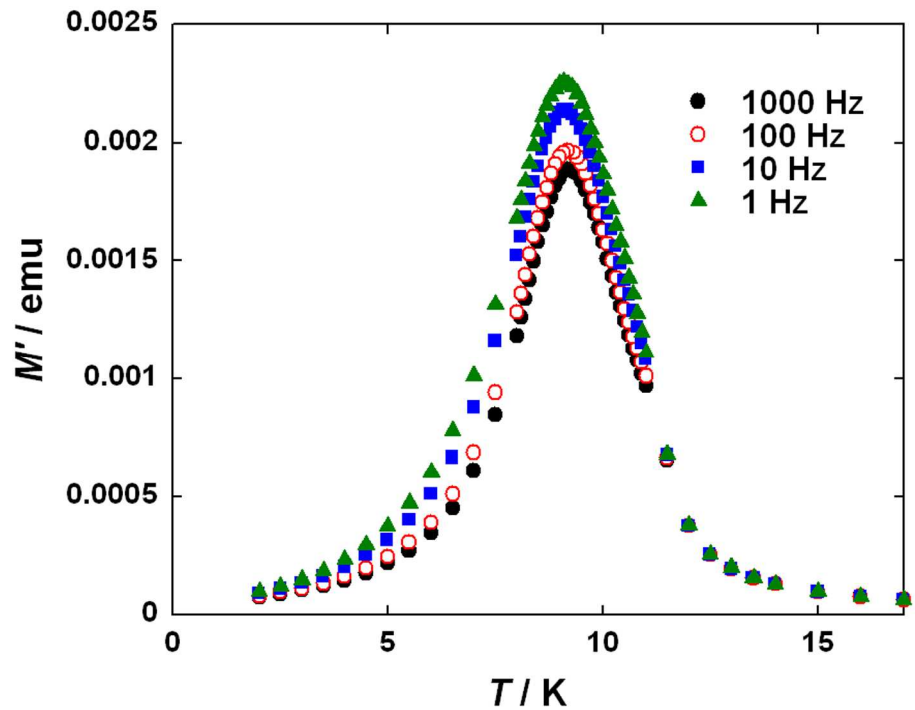
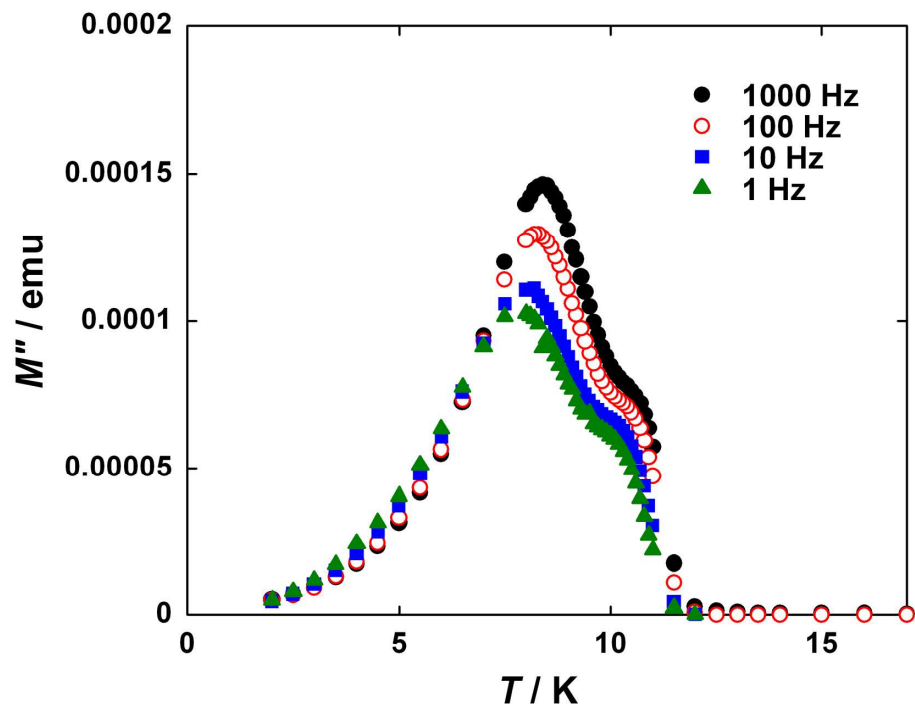


Figure S2. FCM under 5 Oe, RM and ZFCM of the FeCr complex. The insert is the  $dM/dT$  vs.  $T$  plot of FCM.

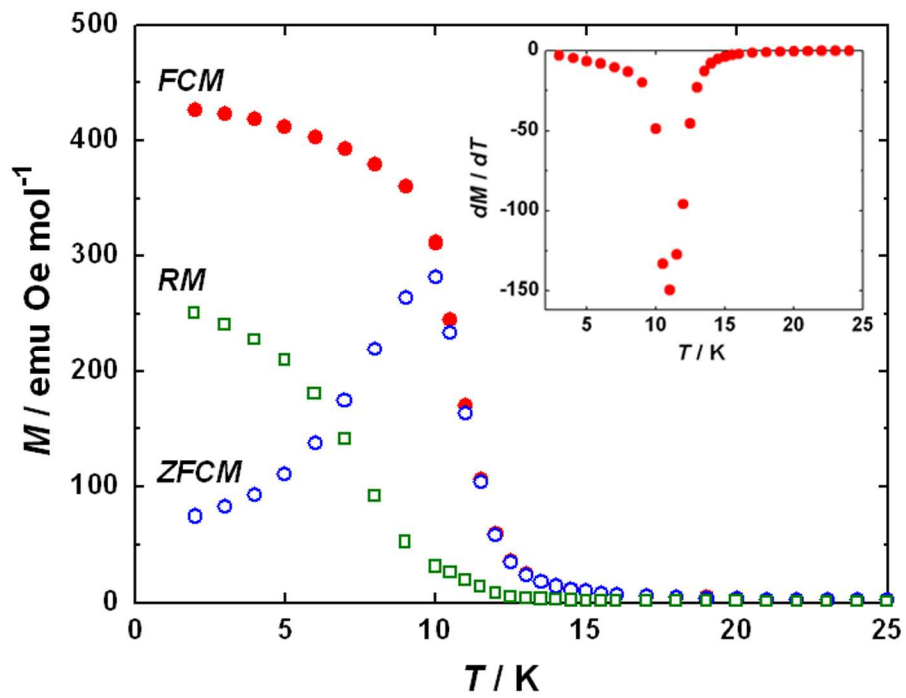
(a)



(b)

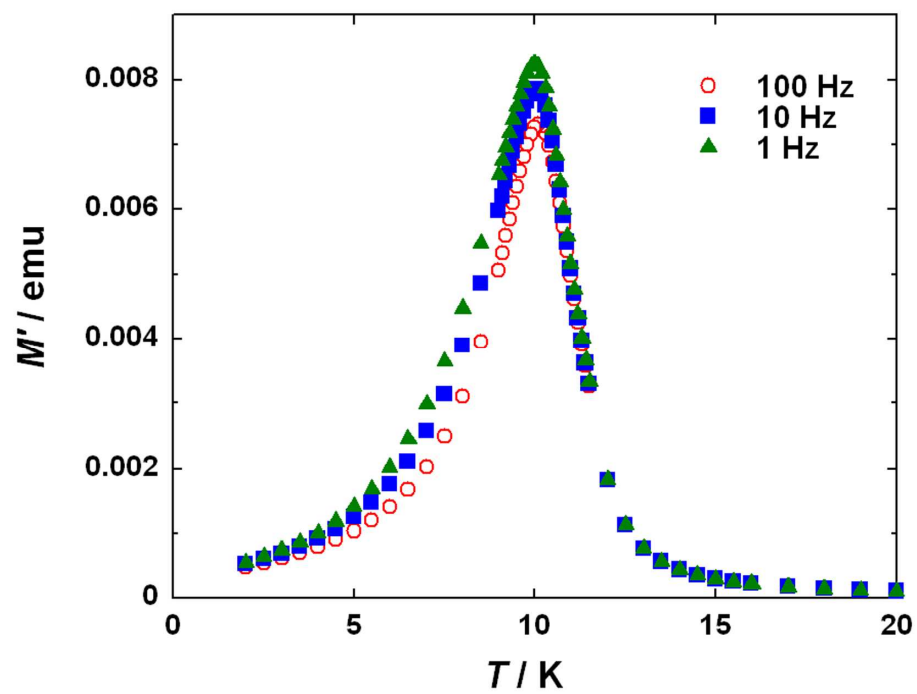


**Figure S3.** (a) In-phase magnetization ( $M'$ ) and (b) out-of-phase magnetization ( $M''$ ) curves of the FeCr complex in an AC field of 3 Oe at frequencies of 1–1000 Hz.

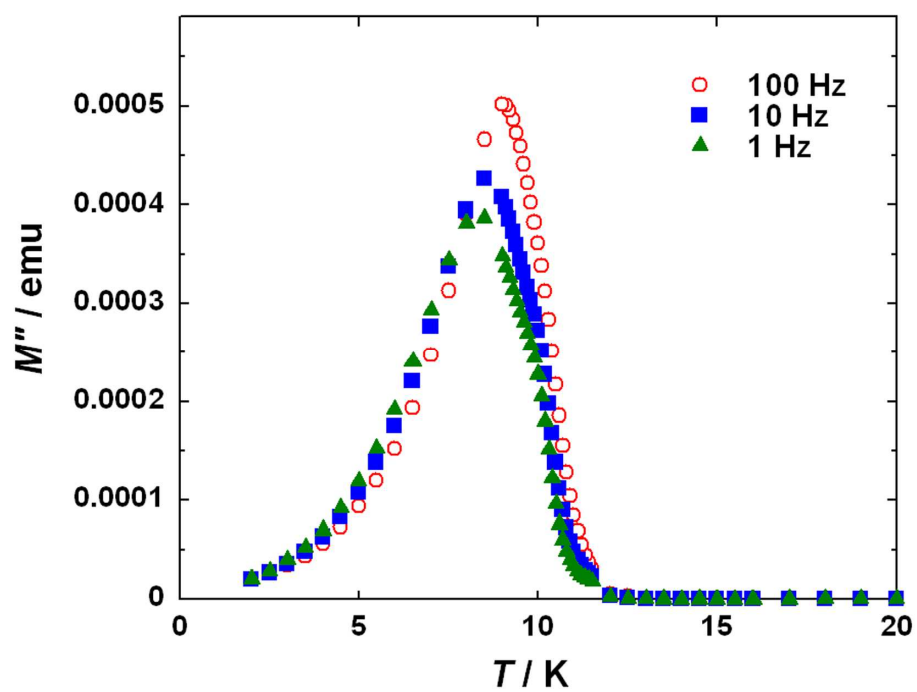


**Figure S4.** FCM under 5 Oe, RM and ZFCM of the CoCr complex. The insert is the  $dM/dT$  vs.  $T$  plot of FCM.

(a)



(b)



**Figure S5.** (a) In-phase magnetization ( $M'$ ) and (b) out-of-phase magnetization ( $M''$ ) curves of the CoCr complex in an AC field of 3 Oe at frequencies of 1–1000 Hz.