

Supporting information

Seta-633 – A NIR Fluorescence Lifetime Label for Low Molecular- Weight Analytes

Yevgen A. Povrozin,[†] Olga S. Kolosova,[†] Olena M. Obukhova,[†] Anatoliy L.
Tatarets,[†] Vadim I. Sidorov,[†] Ewald A. Terpetschnig,^{*,‡,§} and Leonid D. Patsenker^{†,‡}

[†] SSI "Institute for Single Crystals" of the National Academy of Sciences of Ukraine,
60 Lenin Ave., Kharkov 61001, Ukraine

[‡] SETA BioMedicals, 2014 Silver Court East, Urbana IL 61802, USA

[§] ISS, Inc., 1602 Newton Drive, Champaign, IL 61822, USA

* Corresponding author: SETA BioMedicals, 2014 Silver Court East, Urbana IL 61802, USA,

Phone: +1 217 417 2160, Fax: +1 217 689 4237. E-mail: ewaldte@juno.com.

Running Title: NIR Fluorescence Lifetime Label

Table 1. MS-EI spectrum data

Method Description: EI
 Scan 1 Channel Description: 40.0:600.0> EI;Det 0;WI Q1 Cal;ST 0.010
 Scan Information: cp = 1.0 mTorr
 Precursor Mass Range: 40 - 600 m/z

Ion	Int	Norm	Ion	Int	Norm	Ion	Int	Norm	Ion	Int	Norm
61	2.293e+7	19	103	7.787e+7	63	139	1.374e+8	111	173	8.590e+7	70
67	1.389e+7	11	105	4.575e+7	37	140	5.412e+8	439	174	2.358e+7	19
69	1.470e+7	12	106	1.775e+7	14	141	1.181e+8	96	181	1.445e+7	12
70	1.345e+7	11	107	2.528e+7	20	142	1.086e+8	88	182	1.263e+7	10
71	1.366e+7	11	108	4.420e+7	36	143	1.009e+9	818	183	1.909e+7	15
72	1.691e+7	14	109	3.558e+7	29	144	2.020e+8	164	184	2.356e+7	19
73	7.791e+7	63	110	1.071e+8	87	145	3.253e+7	26	185	2.938e+7	24
74	1.252e+7	10	111	1.540e+8	125	148	1.585e+7	13	189	2.557e+7	21
79	2.301e+7	19	112	1.903e+8	154	149	1.400e+8	113	197	8.653e+7	72
80	1.998e+7	16	113	1.471e+8	119	150	7.842e+7	64	198	2.180e+7	18
81	5.549e+7	45	114	1.202e+8	97	151	1.772e+8	144	199	2.004e+7	16
82	9.476e+7	77	115	1.926e+8	156	152	1.137e+8	92	209	2.549e+7	21
83	4.439e+7	36	116	7.740e+7	63	153	7.574e+7	61	210	3.480e+7	28
84	8.054e+8	653	117	1.302e+7	11	154	9.270e+7	75	211	1.251e+7	10
85	4.491e+8	364	121	1.255e+7	10	155	1.261e+8	102	225	3.433e+7	28
86	3.186e+8	258	122	2.104e+7	17	156	6.351e+7	51	226	3.393e+7	28
87	2.011e+8	163	123	1.011e+8	82	157	6.513e+7	53	227	1.663e+8	135
88	8.974e+7	73	124	1.187e+8	96	158	5.050e+7	41	228	2.471e+7	20
89	7.056e+7	57	125	3.641e+8	295	159	1.370e+7	11	240	1.626e+7	13
91	2.726e+7	22	126	3.807e+8	309	160	8.396e+7	68	242	1.345e+7	11
93	3.425e+7	28	127	5.743e+7	47	161	1.377e+7	11	244	8.974e+7	73
94	4.782e+7	39	128	3.318e+7	27	164	1.887e+7	15	255	1.277e+7	10
95	1.347e+8	109	129	5.757e+7	47	165	3.095e+7	25	257	7.046e+7	57
96	1.376e+8	112	130	8.537e+7	69	166	6.102e+8	495	267	9.859e+7	80
97	1.232e+9	999	131	3.940e+7	32	167	1.490e+8	121	268	2.280e+7	18
98	8.565e+8	694	133	1.508e+7	12	168	5.915e+7	48	269	2.075e+7	17
99	3.282e+8	266	135	3.204e+7	26	169	5.700e+7	46	270	1.289e+7	10
100	4.083e+8	331	136	2.843e+7	23	170	2.038e+7	17	286	2.300e+7	19
101	1.090e+8	88	137	8.576e+7	70	171	2.350e+8	190	287	5.677e+7	46
102	9.686e+8	785	138	1.891e+8	153	172	2.880e+8	233			

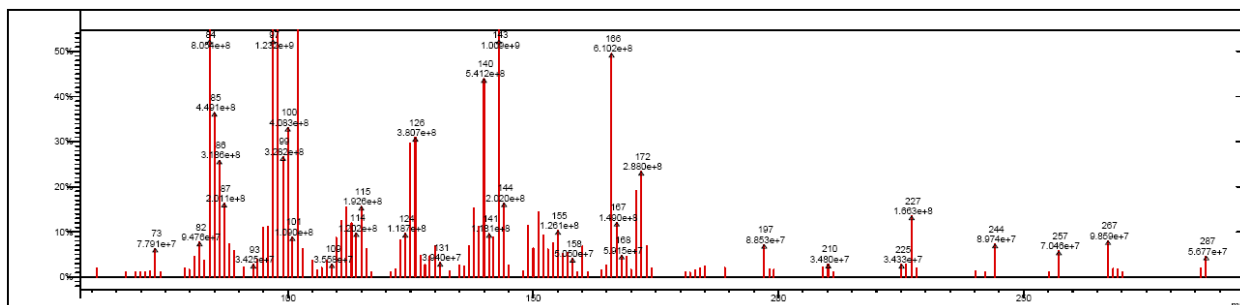


Figure 1. MS-EI spectrum (m/z [40-600]): Calcd. mass using formula C₁₂H₂₂N₄O₂S: 286.15; found m/z: [M+H]⁺ = 287.