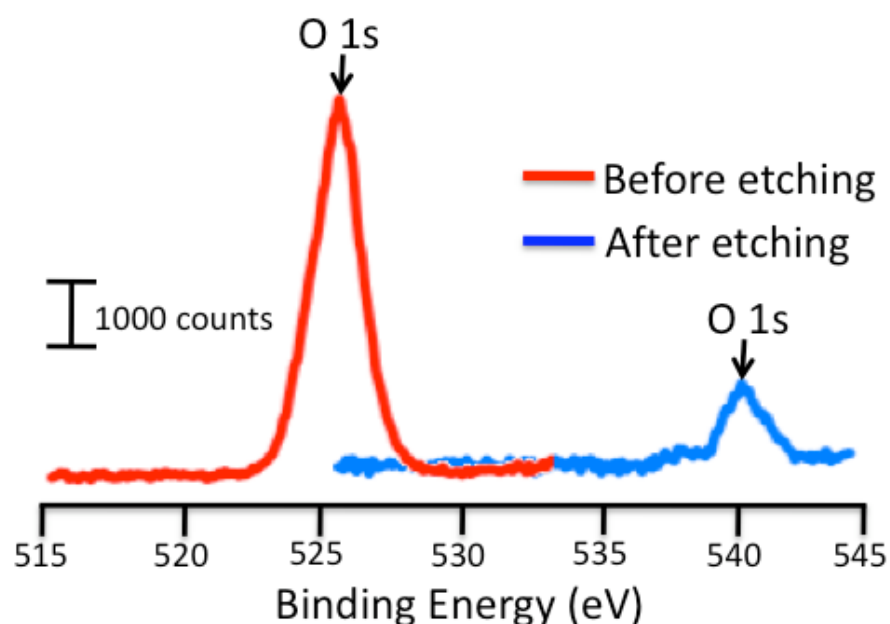


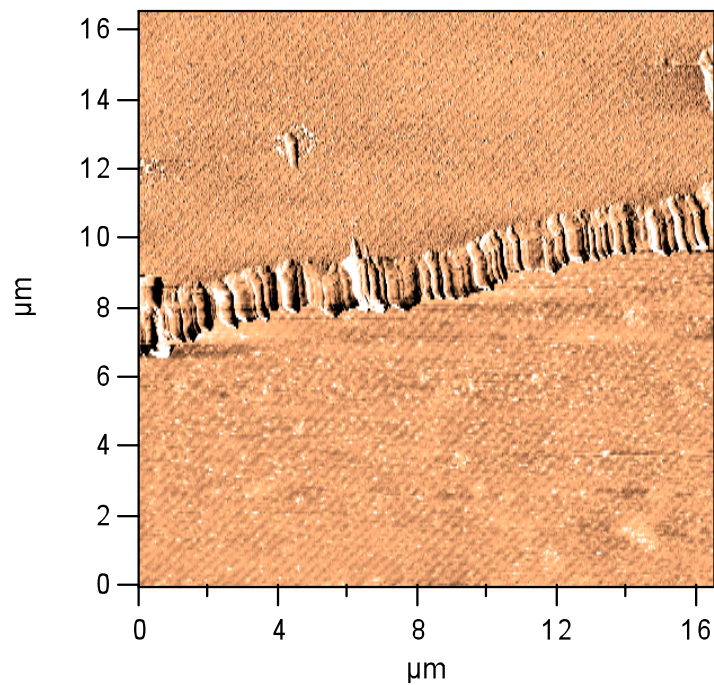
# Electrochemical and Chemical Microfluidic Gold Etching to Generate Patterned and Gradient Substrates for Cell Adhesion and Cell Migration

Nathan P. Westcott, Brian M. Lamb, and Muhammad N. Yousaf\*

University of North Carolina at Chapel Hill, Chapel Hill, North Carolina 27599-3290  
[mnyousaf@unc.edu](mailto:mnyousaf@unc.edu)



**Supplementary Figure 1.** XPS characterization of a gold surface with a TEG monolayer installed. Before the etching takes place, the oxygen 1s peak was found at 526 eV. After the etching has taken place, the O 1s peak is both shifted to 540 eV and reduced in area demonstrating both the oxidation of the oxygen and its destruction by the triiodide etching solution.



***Supplementary Figure 2.*** Lateral Force Microscopy image of an etched gold surface. The top half of the image was the unetched gold and the bottom was the etched region. The boundary between the two regions was observed at 8  $\mu\text{m}$  in the image.