

Supporting Information

**Generation and Assembly of Spheroid-like
Particles**

Tao Deng, James R Cournoyer, James H
Schermerhorn, Joleyn Balch, Yu Du,
Margaret L Blohm

*GE Global Research Center,
Niskayuna, NY, 12065*

Email: dengt@research.ge.com

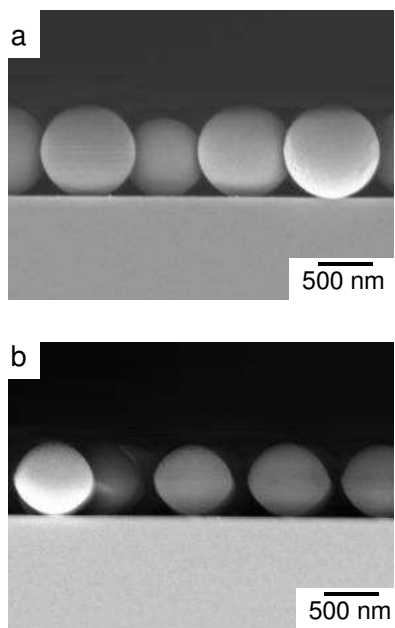


Figure S1. Cross-sectional SEM images: a) Original polystyrene (PS) particles ($r_0 \sim 385$ nm, from Polysciences, Pennsylvania, US); b) PS spheroid-like particles ($d \sim 660$ nm, $h \sim 590$ nm) after 4-min O_2 anisotropic etching at 50 mTorr in PDC-32G (Harrick Plasma, New York, US).