

Supplementary Materials for

Polarization Dependence of Surface-Enhanced Raman Scattering in Gold Nanoparticle-Nanowire Systems

Hong Wei,¹ Feng Hao,² Yingzhou Huang,¹ Wenzhong Wang,^{1□3} Peter Nordlander,^{2,*}

Hongxing Xu^{1,4,*}

¹Laboratory of Soft Matter Physics, Beijing National Laboratory for Condensed Matter
Physics and Institute of Physics, Chinese Academy of Sciences, Box 603-146, 100190,
Beijing, China,

²Laboratory for Nanophotonics, Department of Physics and Astronomy, Rice
University, Houston, Texas 77005-1892, USA,

³School of Science, Central University for Nationalities, Beijing 100081, China

³Division of Solid State Physics/The Nanometer Structure Consortium, Lund
University, Box 118, S-221 00, Lund, Sweden

The Raman mapping clearly shows that strong Raman signals are obtained from the parts of the gold wire where gold nanoparticles are present. Figure S1 shows three examples of particle-wire systems with various sizes of particles (very big, middle size, and very small) that all give strong SERS signals.

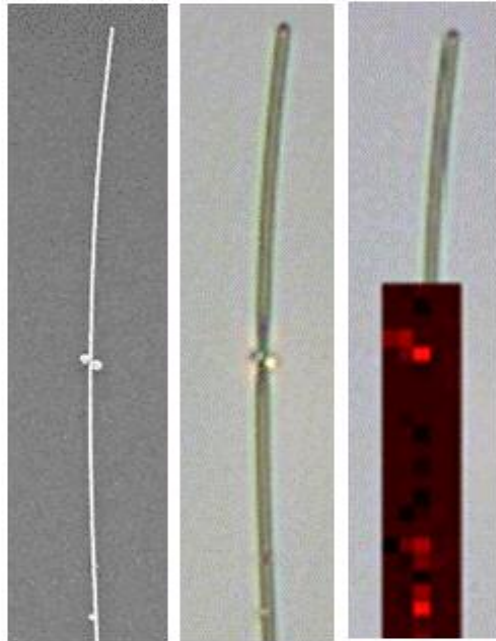


Figure S1. SEM, optical microscopy, and Raman mapping of gold nanowire nanoparticle systems.

Figure S2 shows some further examples of SERS from nanoparticle wire junctions. All show a polarization dependence varying as with $\cos^2(\theta)$.

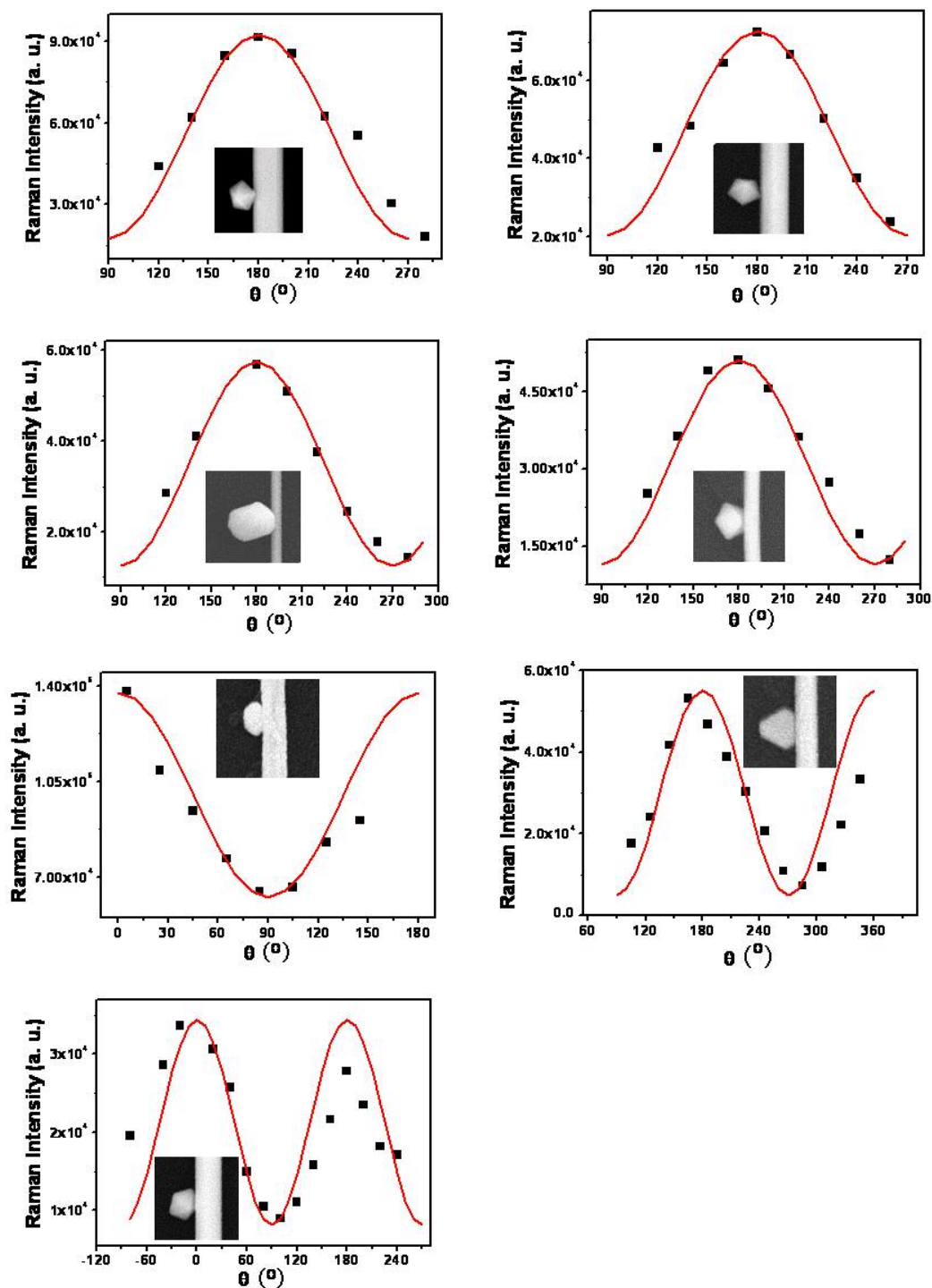


Figure S2. More examples showing polarization dependence. Black squares are experimental data, and red curves are fits to $\cos^2(\theta)$.