

Figure S1, Comparison of the MALDI TOF MS protein profiles acquired in the m/z range from 2000 to 50,000 from fresh frozen (blue) and ethanol preserved paraffin embedded (EPPE, red) mouse lung tissue sections using sinapinic acid as matrix.

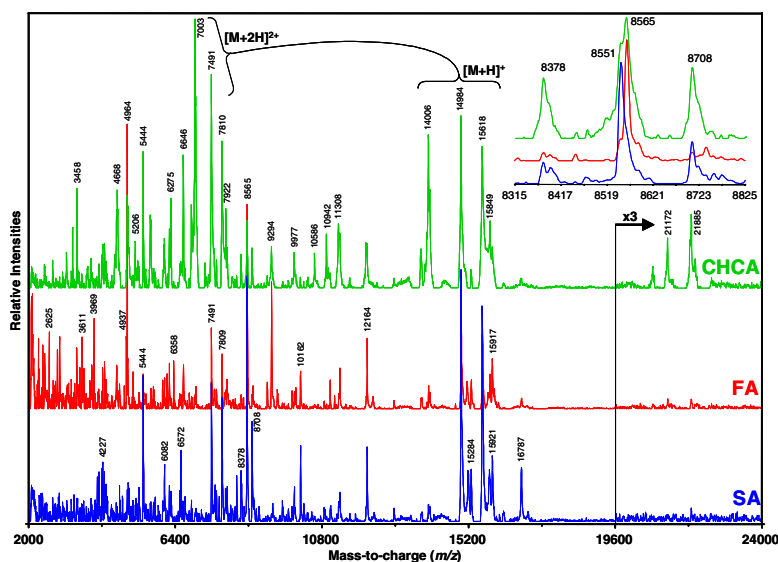


Figure S2, Comparison of the MALDI TOF MS protein profiles acquired from ethanol preserved paraffin embedded (EPPE) mouse liver tissue sections using different matrices. SA, sinapinic acid; FA, ferrulic acid; CHCA, α -cyano-4-hydroxi-cinnamic acid.