

1 **Supporting Information**

2  
3  
4 **Air quality impacts from prescribed forest fires under**  
5 **different management practices**  
6

7  
8 *Di Tian<sup>1\*</sup>, Yuhang Wang<sup>2</sup>, Michelle Bergin<sup>1</sup>, Yongtao Hu<sup>1</sup>, Yongqiang Liu<sup>3</sup>, Armistead G.*  
9 *Russell<sup>1</sup>*

10 <sup>1</sup>School of Civil and Environmental Engineering, Georgia Institute of Technology,  
11 Atlanta, GA, 30332, USA

12 <sup>2</sup>School of Earth and Atmospheric Science, Georgia Institute of Technology, Atlanta,  
13 GA, 30332, USA

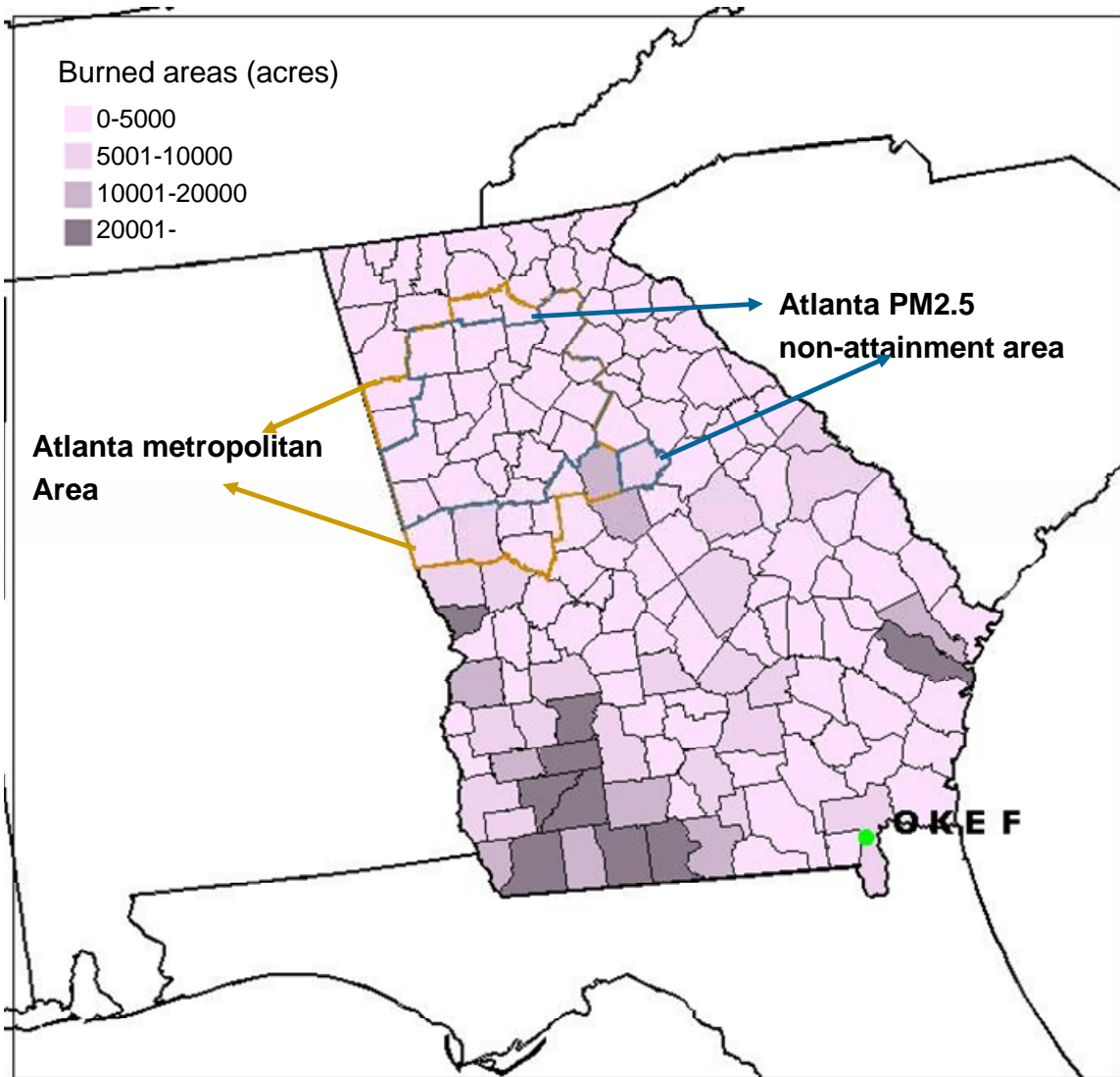
14 <sup>3</sup>USDA Forestry Service, Forestry Sciences Laboratory, Athens, GA, 20602, USA

15  
16  
17 Summary

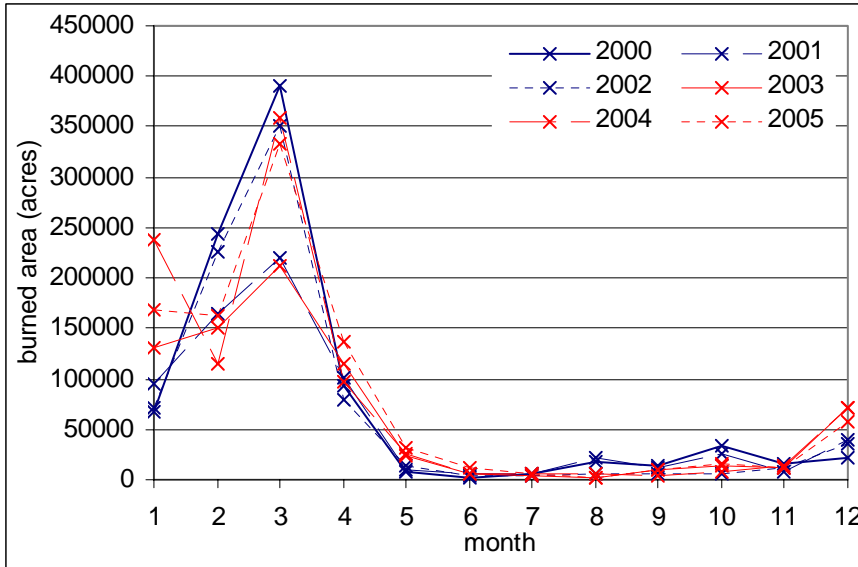
18 There are six pages in the supporting information section, including six figures.

---

\* Corresponding author. Address: School of Civil and Environmental Engineering, Georgia Institute of Technology, Atlanta, GA, 30332, USA. Now at Environmental Protection Division, Georgia Dept. of Natural Resources, 4244 International Parkway, Suite 120, Atlanta, GA 30354. Email: di.tian@gatech.edu. Phone: 404-363-7092. Fax: 404-363-7100.

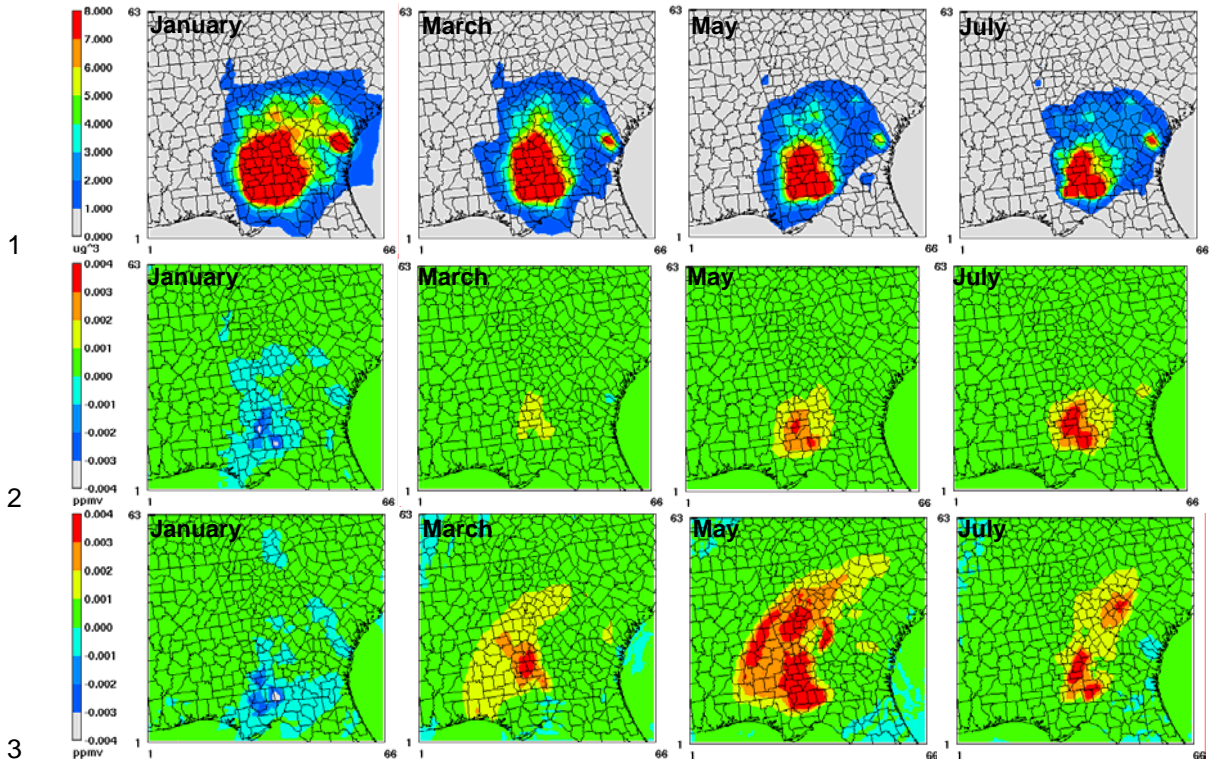


1  
 2 Supporting information. Figure 1. Burned area of prescribed forest fires in Georgia during  
 3 2002, boundaries of the modeling domain, the Atlanta metropolitan area and the Atlanta  
 4 PM2.5 non-attainment area, and the location of Okefenokee swamp (OKEF)  
 5



Supporting information. Figure 2. Monthly burned areas (acres) of prescribed forest fires in Georgia during Years 2000-2005

- 1
- 2
- 3
- 4
- 5
- 6
- 7
- 8
- 9
- 10
- 11
- 12
- 13
- 14
- 15
- 16
- 17
- 18
- 19
- 20
- 21
- 22
- 23
- 24
- 25
- 26
- 27
- 28
- 29
- 30
- 31
- 32



1

2

3

4 **Supporting information. Figure 3. Source contributions from prescribed fires in Georgia**  
 5 **using historical March emissions applied to January, March, May and July 2002. Row 1 is**  
 6 **monthly average PM<sub>2.5</sub> source contributions (µg/m<sup>3</sup>); Row 2 and 3 are monthly averages**  
 7 **and peaks of daily maximum 8-hr O<sub>3</sub> source contributions (ppmv).**

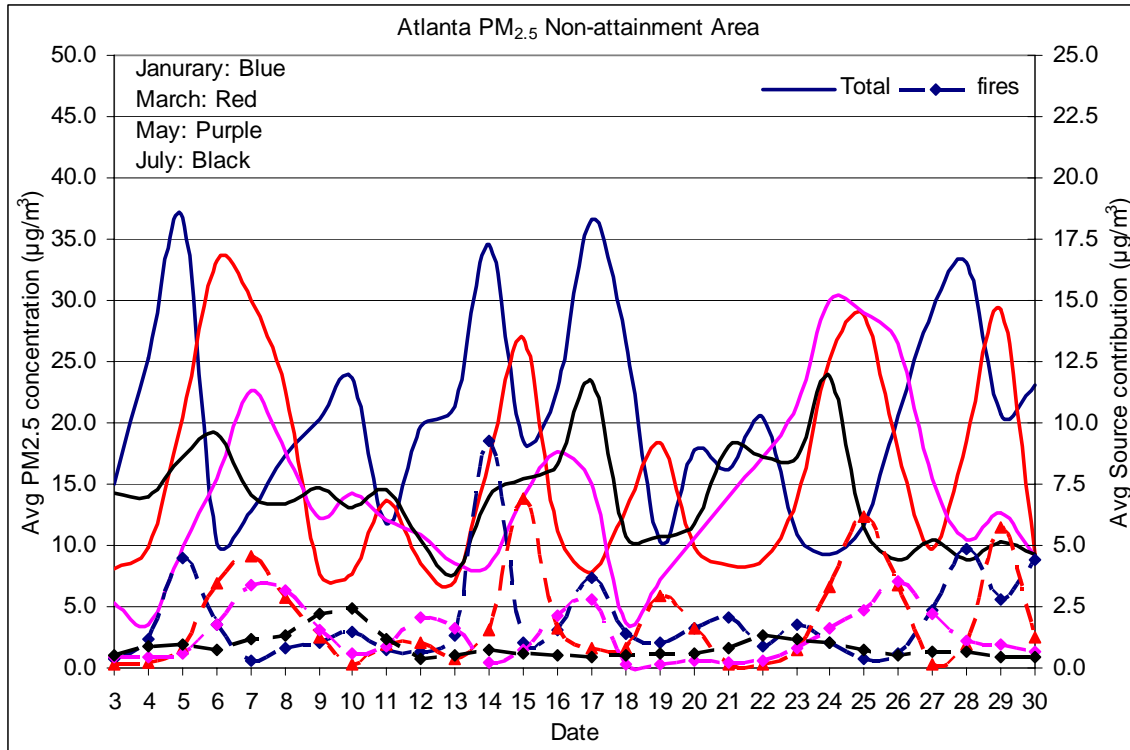
8

9

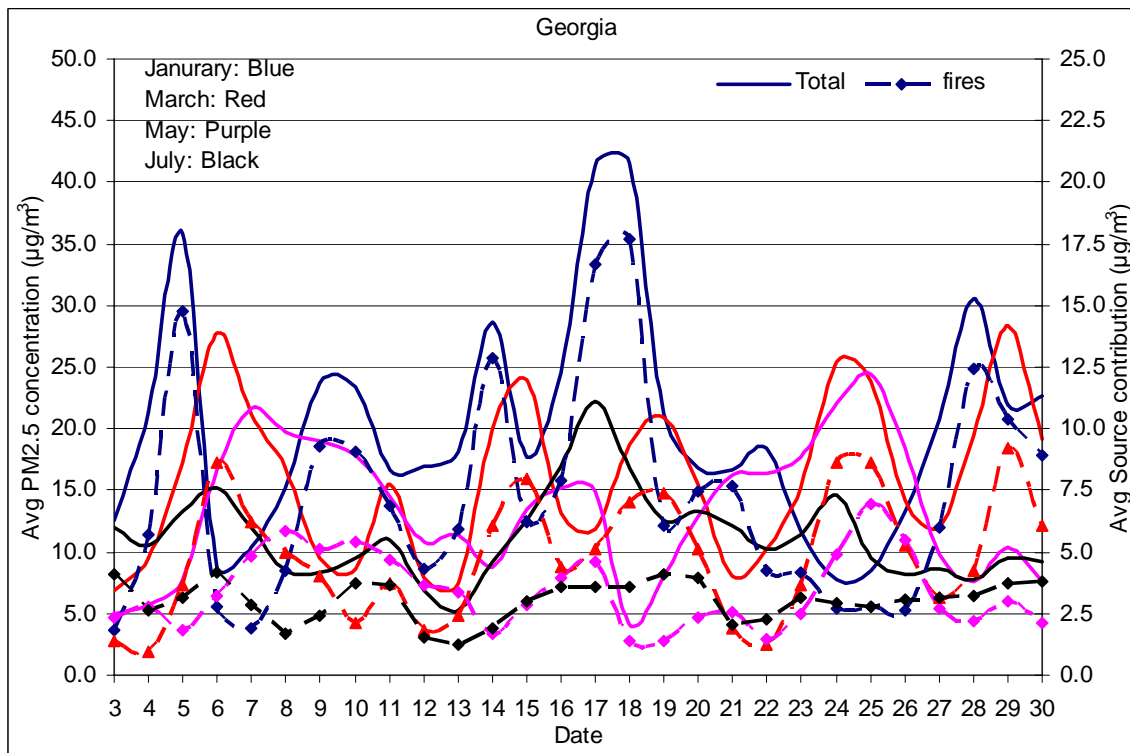
10

11

12

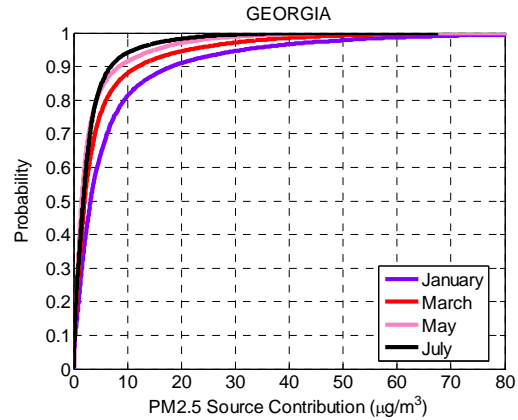
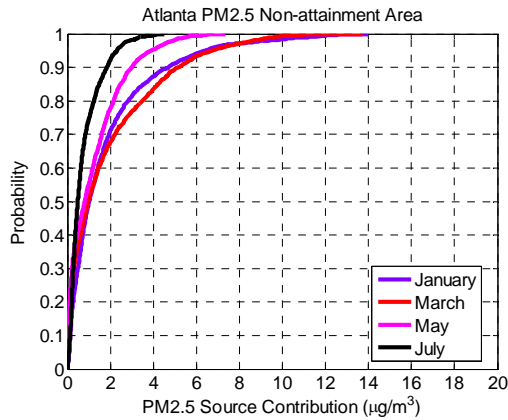


1



2  
3  
4  
5  
6  
7

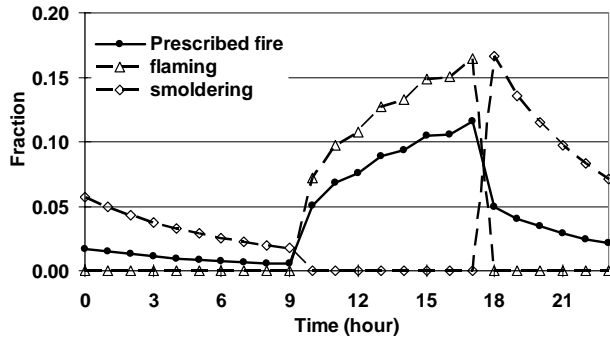
**Supporting information. Figure 4. Daily PM<sub>2.5</sub> concentrations (µg/m<sup>3</sup>) and source contributions (µg/m<sup>3</sup>) when applying the March prescribed fire emissions to January, March, May and July 2002. Both concentrations and source contributions were averaged over two regions: Atlanta PM<sub>2.5</sub> non-attainment area and Georgia, as defined in Table 1.**



1

2 **Supporting information. Figure 5. Cumulative probabilistic distributions of daily PM<sub>2.5</sub>**  
 3 **source contributions (µg/m<sup>3</sup>) from prescribed fires in Georgia applying historical March**  
 4 **emissions to January, March, May and July 2002. Daily source contributions were values**  
 5 **for each grid cell within two regions: the Atlanta PM<sub>2.5</sub> non-attainment area and Georgia, as**  
 6 **defined in Table 1.**

7



8

9 **Supporting information. Figure 6. Diurnal temporal profiles for prescribed fires emissions**  
 10 **during flaming and smoldering stages.**

11