

## Supporting Information

## Complexities in the Ring-Opening Polymerization of Lactide by Chiral Salen Aluminum Initiators

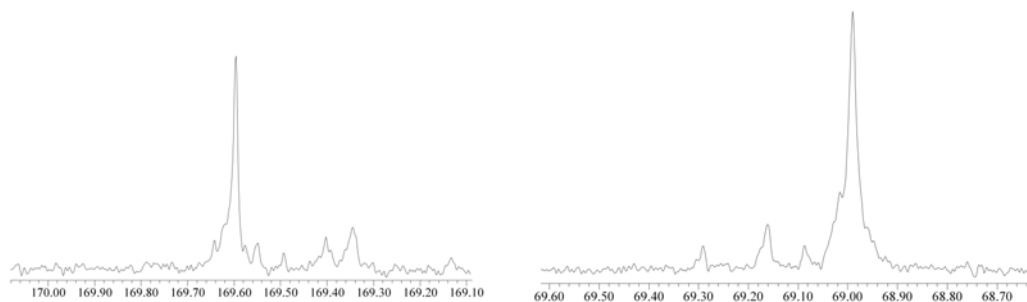
Malcolm H. Chisholm,\* Judith C. Gallucci, Keith T. Quisenberry, and Zhiping Zhou

Department of Chemistry, The Ohio State University, 100 West 18<sup>th</sup> Avenue, Columbus, Ohio 43210-1185**Table S1** Crystallographic details for (*R,R*-salen)AlOCH<sub>2</sub>C(*S*)HMeCl and (*S,S*-salen)AlOCH<sub>2</sub>C(*S*)HMeCl.

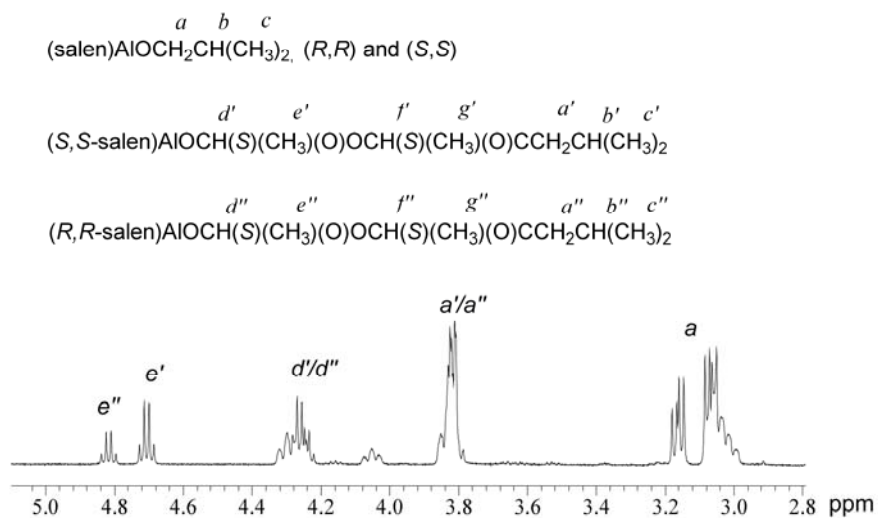
	<i>(R,R)</i> - <i>S</i>		<i>(S,S)</i> - <i>S</i>	
Empirical formula	C <sub>39</sub> H <sub>58</sub> AlClN <sub>2</sub> O <sub>3</sub>		C <sub>39</sub> H <sub>58</sub> AlClN <sub>2</sub> O <sub>3</sub>	
Formular weight	665.30		665.30	
Temperature (K)	200		150	
Wavelength (Å)	0.71073		0.71073	
Crystal system	monoclinic		monoclinic	
Space group	P2 <sub>1</sub>		P2 <sub>1</sub>	
Unit cell dimensions				
a (Å)	14.923(1)		14.927(1)	
b (Å)	11.021(1)		10.941(1)	
c (Å)	23.440(1)		23.393(1)	
β (°)	93.397(1)		93.69(1)	
V (Å <sup>3</sup> )	3848.6(7)		3812.5(7)	
Z	4		4	
D <sub>calc</sub> (mg m <sup>-3</sup> )	1.148		1.159	
Absorption coefficient (mm <sup>-1</sup> )	0.159		0.160	
F(000)	1440		1440	
Crystal size (mm <sup>-3</sup> )	0.38x0.19x0.15		0.38x0.31x0.27	
Theta range for data collection (°)	1.58-22.99		1.57-25.03	
Index ranges	-16 ≤ h ≤ 16, -12 ≤ k ≤ 12, -25 ≤ l ≤ 25		-17 ≤ h ≤ 17, -13 ≤ k ≤ 12, -27 ≤ l ≤ 27	
Reflections collected	60183		60079	
Independent reflections	10692[R <sub>int</sub> =0.073]		13387[R <sub>int</sub> =0.058]	
Refinement method	Full-matrix	least-squares	Full-matrix	least-squares
	on F <sup>2</sup>		on F <sup>2</sup>	
Data/restraints/parameters	10692/1/886		13387/1/826	
Flack parameter	0.00(9)		0.00(8)	
Goodness-of-fit on F <sup>2</sup>	1.021		1.020	
Final R indices [I > 2σ(I)]	R <sub>1</sub> =0.0508, wR <sub>2</sub> =0.1237		R <sub>1</sub> =0.0555, wR <sub>2</sub> =0.1321	
R indices (all data)	R <sub>1</sub> =0.0749, wR <sub>2</sub> =0.1364		R <sub>1</sub> =0.0852, wR <sub>2</sub> =0.1467	
Largest difference peak and hole (e/Å <sup>3</sup> )	0.412 and -0.506		0.565 and -0.371	

**Table S2** Selected bond distances (Å) and angles (deg) for (*R,R*-salen)AlOCH<sub>2</sub>C(*S*)HMeCl and (*S,S*-salen)AlOCH<sub>2</sub>C(*S*)HMeCl. (The atom numbers are corresponding to Fig. 1)

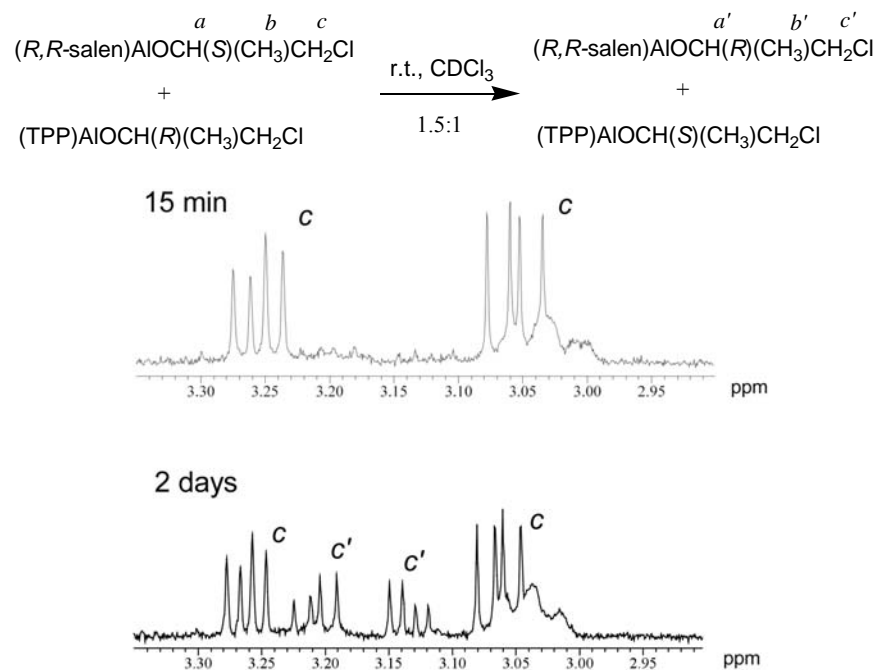
<i>(R,R)</i> - <i>S</i>		<i>(S,S)</i> - <i>S</i>	
Al1—O1	1.797(3)	Al2—O5	1.798(3)
Al1—O2	1.804(3)	Al2—O6	1.820(3)
Al1—O3	1.746(3)	Al2—O4	1.748(3)
Al1—N1	2.021(3)	Al2—N3	2.004(3)
Al1—N2	1.999(3)	Al2—N4	2.010(3)
O3—C38	1.377(6)	O4—C76	1.401(5)
C38—C39	1.501(7)	C76—C77	1.488(6)
C39—C40	1.497(7)	C77—C78	1.504(7)
Cl1—C39	1.809(5)	Cl2—C77	1.811(4)
O3—Al1—O1	109.7(1)	O4—Al2—O5	111.0(1)
O3—Al1—O2	107.2(1)	O4—Al2—O6	106.5(1)
O3—Al1—N1	96.5(1)	O4—Al2—N3	97.0(1)
O3—Al1—N2	104.3(1)	O4—Al2—N4	103.2(1)
O1—Al1—O2	89.8(1)	O5—Al2—O6	89.8(1)
O1—Al1—N1	88.8(1)	O5—Al2—N3	88.8(1)
O1—Al1—N2	144.9(2)	O5—Al2—N4	144.9(1)
O2—Al1—N2	88.2(1)	O6—Al2—N4	88.2(1)
O2—Al1—N1	155.2(1)	O6—Al2—N3	155.3(1)
N1—Al1—N2	78.9(1)	N3—Al2—N4	79.0(1)
C38—O3—Al1	127.3(3)	C76—O4—Al2	124.4(3)
O3—C38—C39	113.6(4)	O4—C76—C77	113.0(4)
C38—C39—C40	112.6(5)	C76—C77—C78	112.0(4)
C38—C39—Cl1	110.2(3)	C76—C77—Cl2	111.0(3)
C40—C39—Cl1	111.5(4)	C78—C77—Cl2	111.4(3)



**Figure S1.**  $^{13}\text{C}$  NMR of the PLA formed in the polymerization reaction of 70:30 *L:D* lactide by (*S,S*)-2 initiator.



**Figure S2.**  $^1\text{H}$  NMR of the reaction mixture of (*rac*-salen)AlOCH<sub>2</sub>CHMe<sub>2</sub> and L-lactide.



**Figure S3.**  $^1\text{H}$  NMR showing the exchange reaction between (TPP)AlOR and (salen)AlOR. (The preparation of complexes and  $^1\text{H}$  NMR assignments can be found in reference, Chisholm, M. H.; Zhou, Z. *J. Am. Chem. Soc.*, **2004**, 126, 11030-11039.)