

## Supporting Information

# Isolation of Cytotoxic Metabolites from Targeted Peruvian Amazonian Medicinal Plants

José C. Aponte,<sup>†</sup> Abraham J. Vaisberg,<sup>‡#</sup> Rosario Rojas,<sup>§</sup> Luz Caviedes,<sup>‡,-</sup> Walter H. Lewis,<sup>-</sup> Gerardo Lamas,<sup>-</sup> César Sarasara,<sup>∇</sup> Robert H. Gilman,<sup>-</sup> and Gerald B. Hammond\*<sup>†,‡,#</sup>

*Department of Chemistry, University of Louisville, Louisville, KY 40292, Departamento de Microbiología y Laboratorios de Investigación y Desarrollo, Universidad Peruana Cayetano Heredia, Lima, Perú, Departamento de Ciencias Farmacéuticas, Facultad de Ciencias y Filosofía, Universidad Peruana Cayetano Heredia, Lima, Perú, Department of Biology, Washington University, St. Louis, MO 63130, Departamento de Entomología, Museo de Historia Natural, Universidad Nacional Mayor de San Marcos, Lima, Perú, Confederación de Nacionalidades Amazónicas del Perú (CONAP), Lima, Perú and Department of International Health, Johns Hopkins University School of Public Health, Baltimore, Maryland, 21205*

\*To whom correspondence should be addressed. Tel: (+1)502-852-5998. Fax: (+1)502-852-3899. E-mail: [gb.hammond@louisville.edu](mailto:gb.hammond@louisville.edu).

<sup>†</sup>University of Louisville.

<sup>‡</sup>Departamento de Microbiología y Laboratorios de Investigación y Desarrollo, Facultad de Ciencias y Filosofía, Universidad Peruana Cayetano Heredia.

<sup>§</sup>Departamento de Ciencias Farmacéuticas, Universidad Peruana Cayetano Heredia.

<sup>-</sup>Washington University, St. Louis.

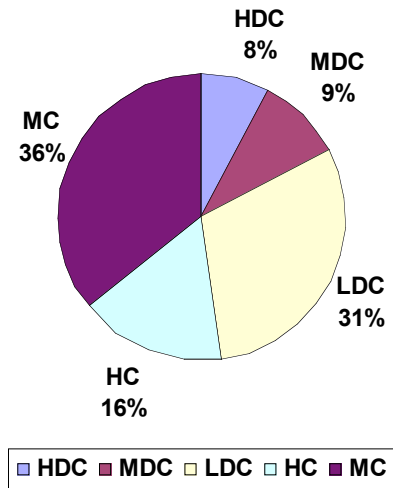
<sup>-</sup>Universidad Nacional Mayor de San Marcos.

<sup>∇</sup>Confederación de Nacionalidades Amazónicas del Perú.

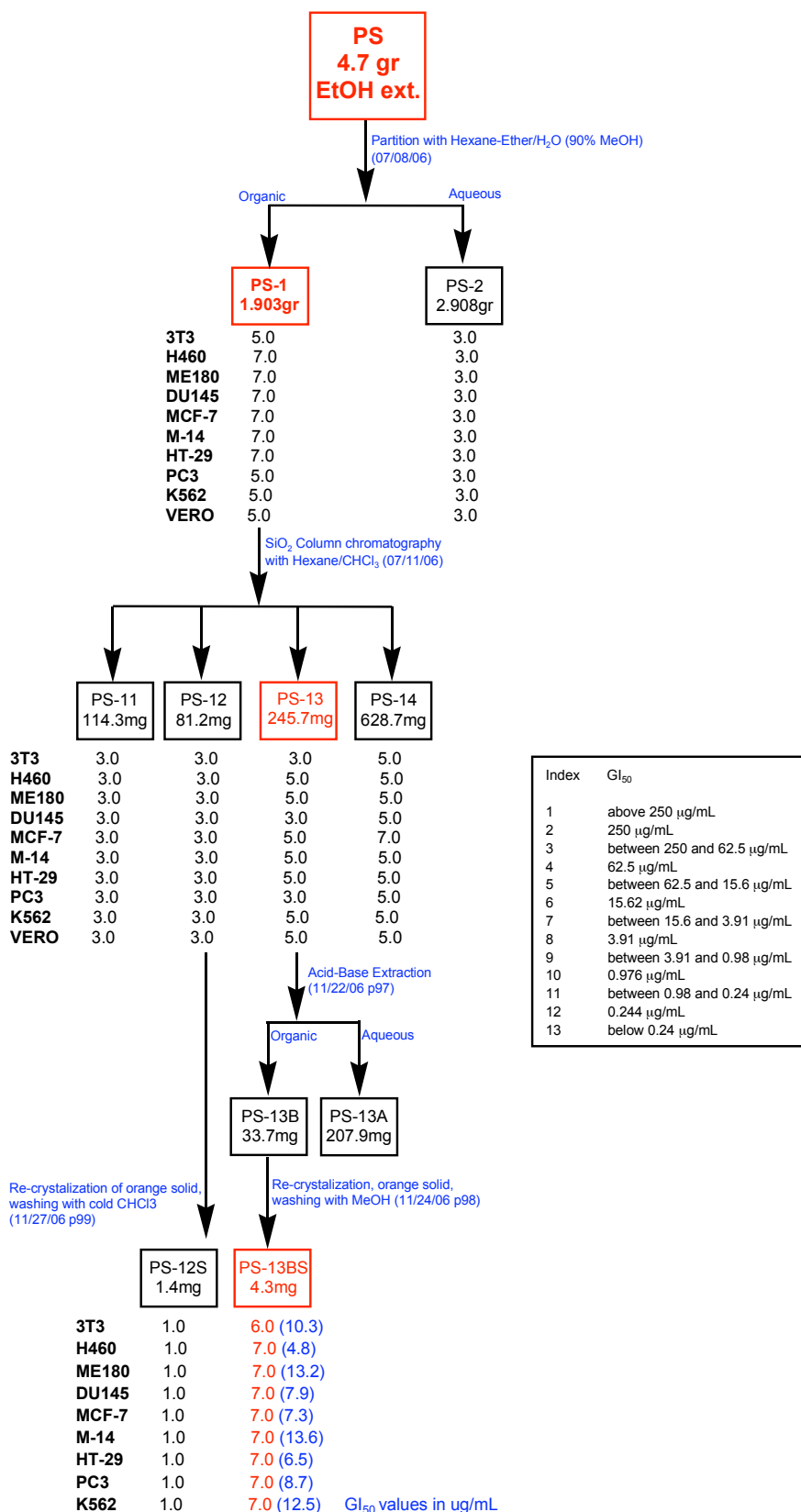
<sup>-</sup>Johns Hopkins University School of Public Health.

<sup>#</sup>A. V. and G. B. H. share senior authorship.

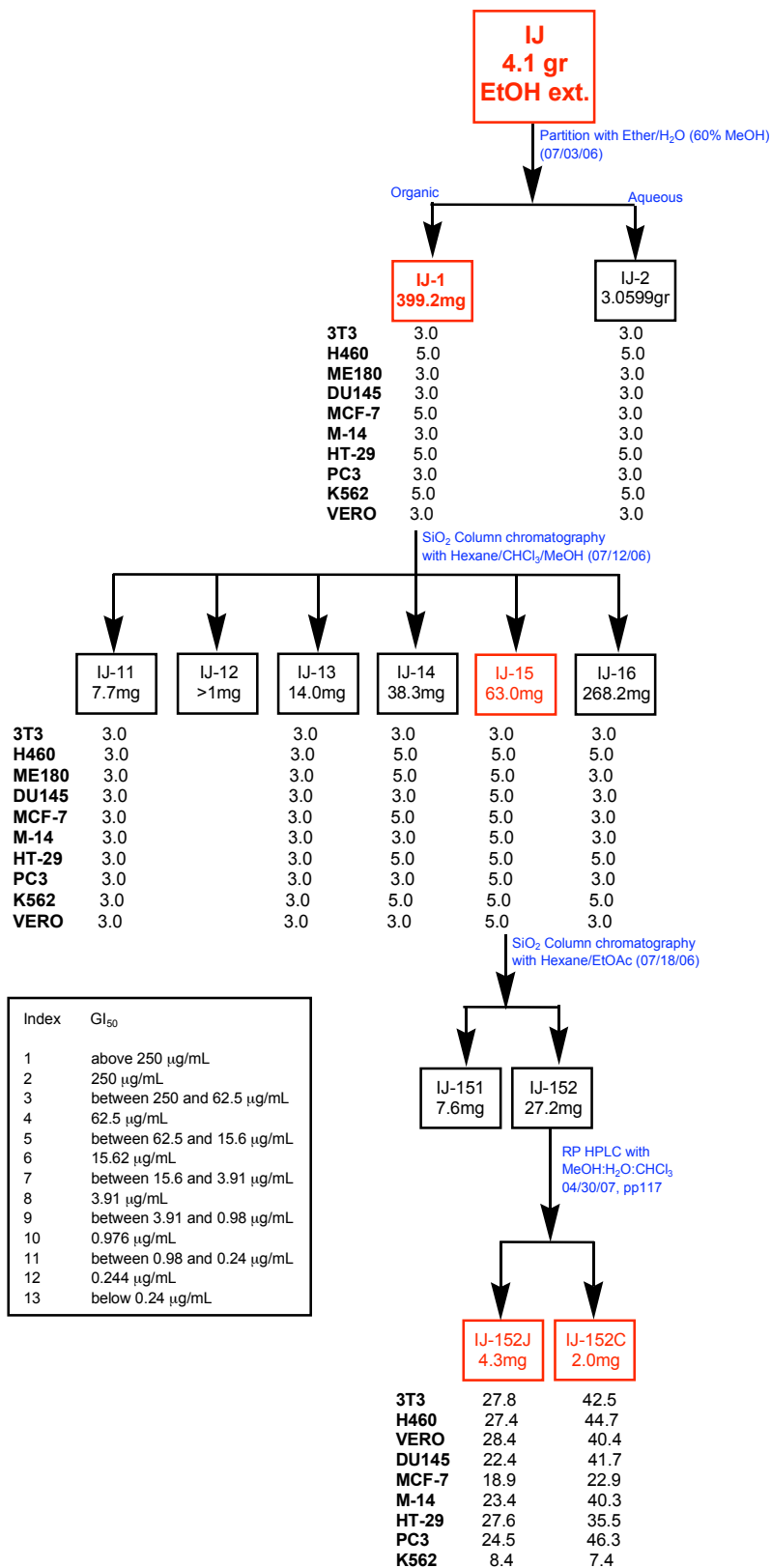
**Figure S1.** Peruvian plant extracts with different levels of cytotoxicity: High Cytotoxicity (HC), Moderate Cytotoxicity (MD), High Differential Cytotoxicity (HDC), Medium Differential Cytotoxicity (MDC) and Low Differential Cytotoxicity (LDC).



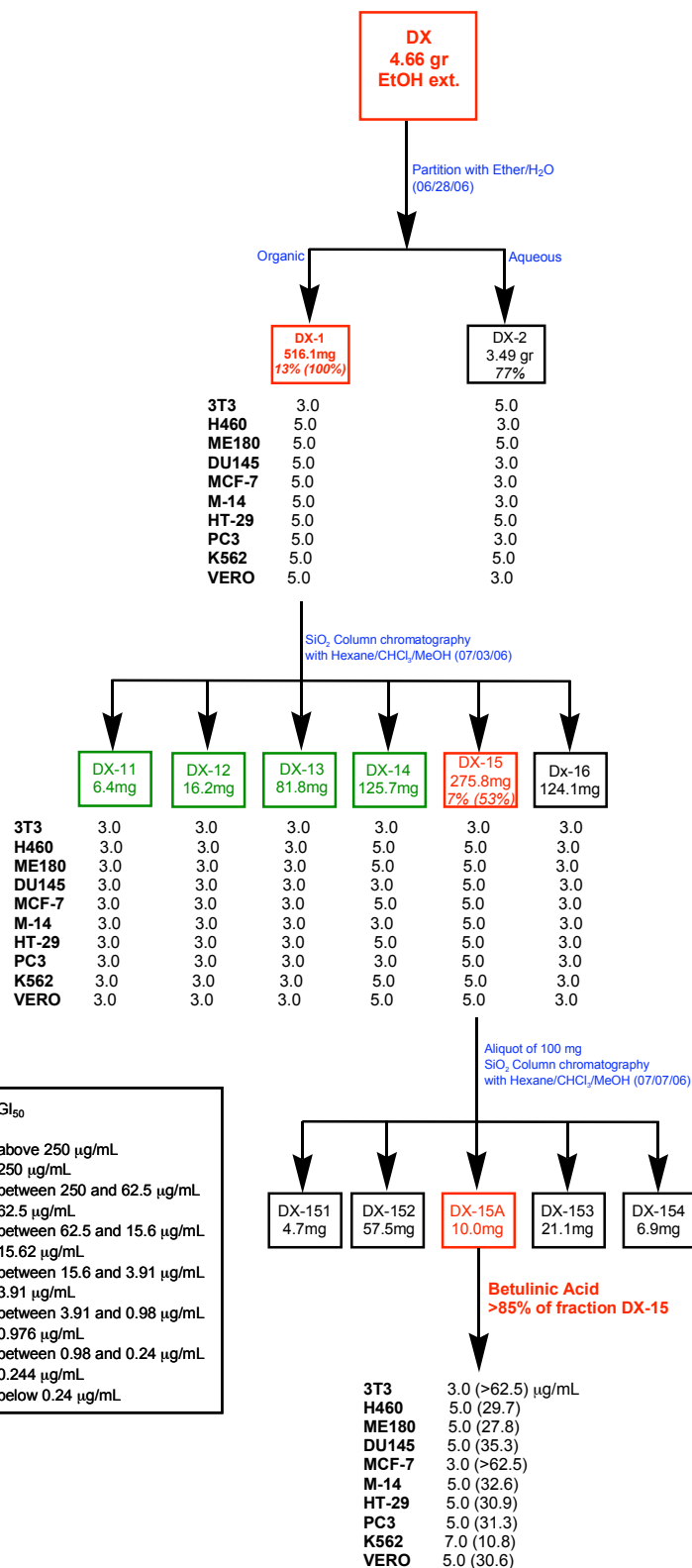
## *Picramnia sellowii* "PS" Bioassay-guided Fractionation Flow Chart



***Iryanthera juruensis* "IJ"**  
**Bioassay-guided Fractionation Flow Chart**



## *Doliocarpus dentatus* "DX" Bioassay-guided Fractionation Flow Chart



Index	GI <sub>50</sub>
1	above 250 µg/mL
2	250 µg/mL
3	between 250 and 62.5 µg/mL
4	62.5 µg/mL
5	between 62.5 and 15.6 µg/mL
6	15.62 µg/mL
7	between 15.6 and 3.91 µg/mL
8	3.91 µg/mL
9	between 3.91 and 0.98 µg/mL
10	0.976 µg/mL
11	between 0.98 and 0.24 µg/mL
12	0.244 µg/mL
13	below 0.24 µg/mL

***Strychnos mitscherlichii* "SM"**  
**Bioassay-guided Fractionation Flow Chart**

