

Supporting information:

Crystallization of polymer brushes with poly(ethylene oxide) side-chains

Ying Zheng, Merlin, L. Bruening,* Gregory L. Baker*

Department of Chemistry, Michigan State University, East Lansing, MI, 48824

zhengyin@msu.edu, bruening@chemistry.msu.edu, bakerg@msu.edu

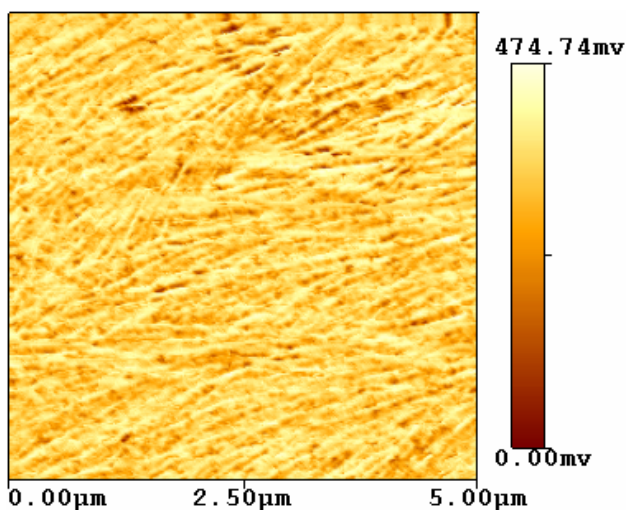


Figure S-1. AFM Phase images (5 × 5 μm) of crystalline polymer brushes with thicknesses of (a) 92 nm; (b) 35 nm.

