

A Novel Endogenous Cyclic Glutathione Adduct Formed During
Oxidative Stress: Supplementary Data

Wenying Jian, Seon Hwa Lee, Clementina Mesaros, Tomoyuki Oe,
Maria V. Silva Elipe[¶], and Ian A. Blair*

*Center for Cancer Pharmacology, University of Pennsylvania School of Medicine, 854
BRB II/III, 421 Curie Boulevard, Philadelphia PA 19104-6160, USA and [¶]Amgen,
Analytical Sciences Department, One Amgen Center Drive, Thousand Oaks, CA 91320*

Running title: A Novel Endogenous Glutathione-adduct

Address correspondence to: Ian A. Blair, Ph.D., Director, Center for Cancer Pharmacology, 854
BRB II/III, 421 Curie Blvd., University of Pennsylvania, Philadelphia PA 19104-6160, USA.
Phone: 215-573-9880 FAX: 215-573-9889; Email: ian@spirit.gcrc.upenn.edu

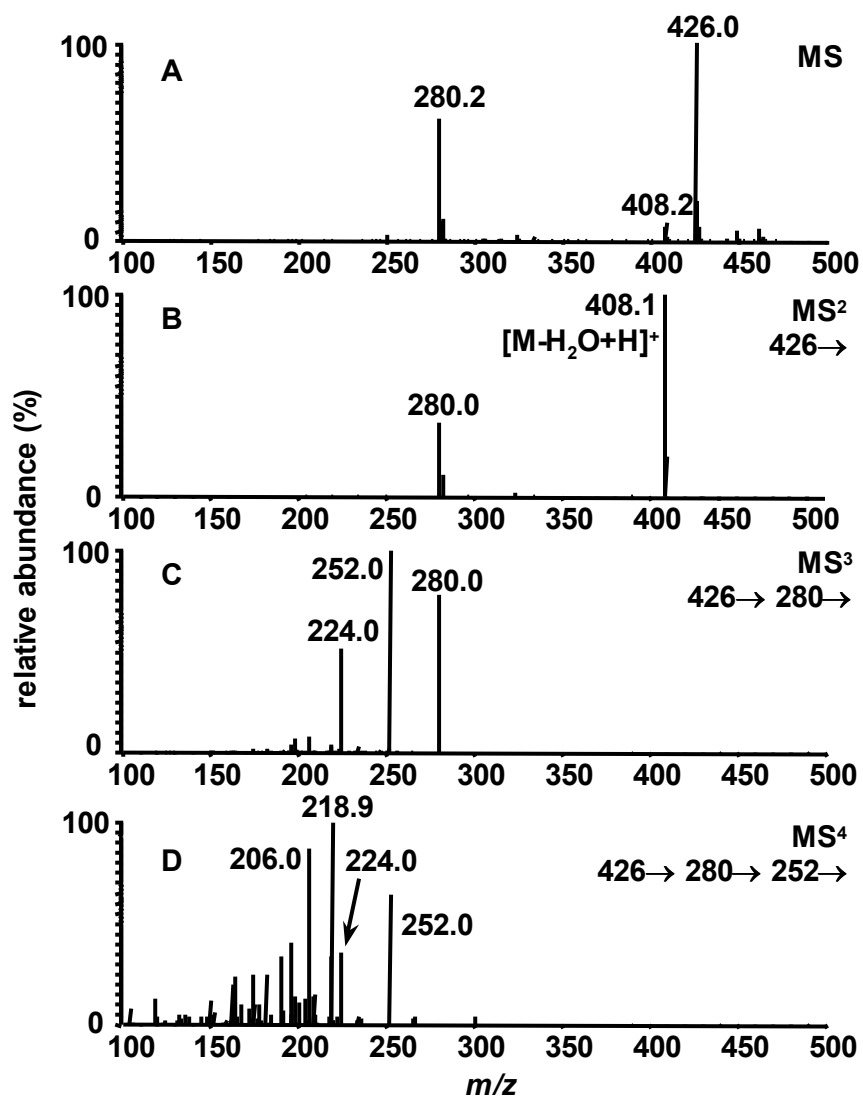


Figure S1: MSⁿ analyses of adduct IIa from the equine liver GST-mediated reaction between GSH and ONE. (A) MS¹, (B) MS², (C) MS³, (D) MS⁴.

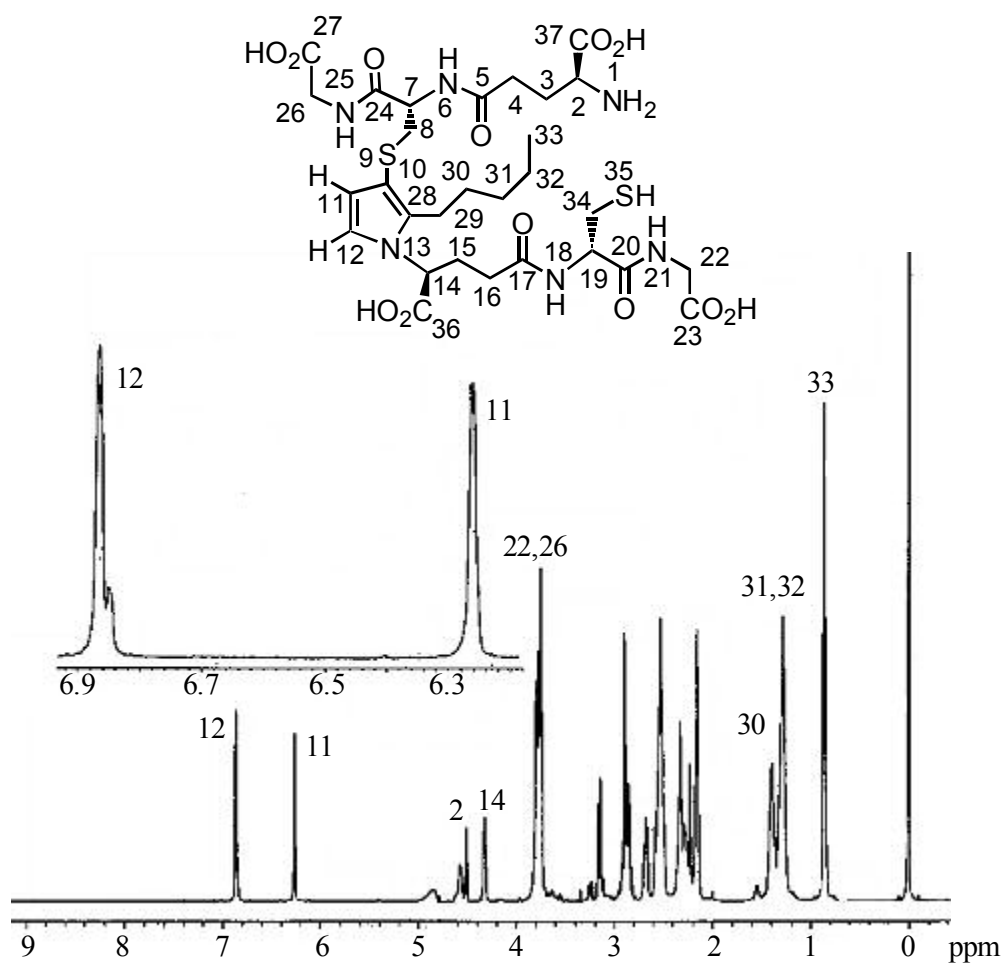


Figure S2: The ¹H NMR spectrum of adduct 1a.

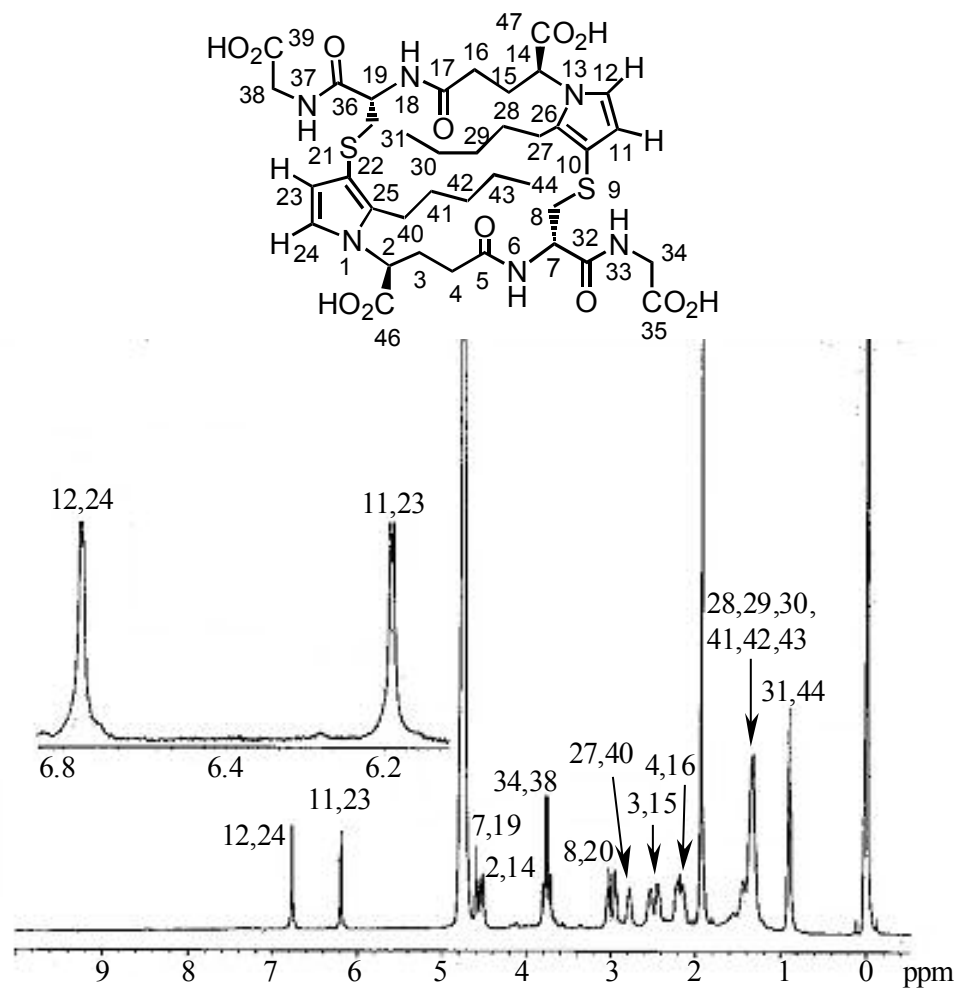


Figure S3 ¹H NMR spectrum of adduct III.

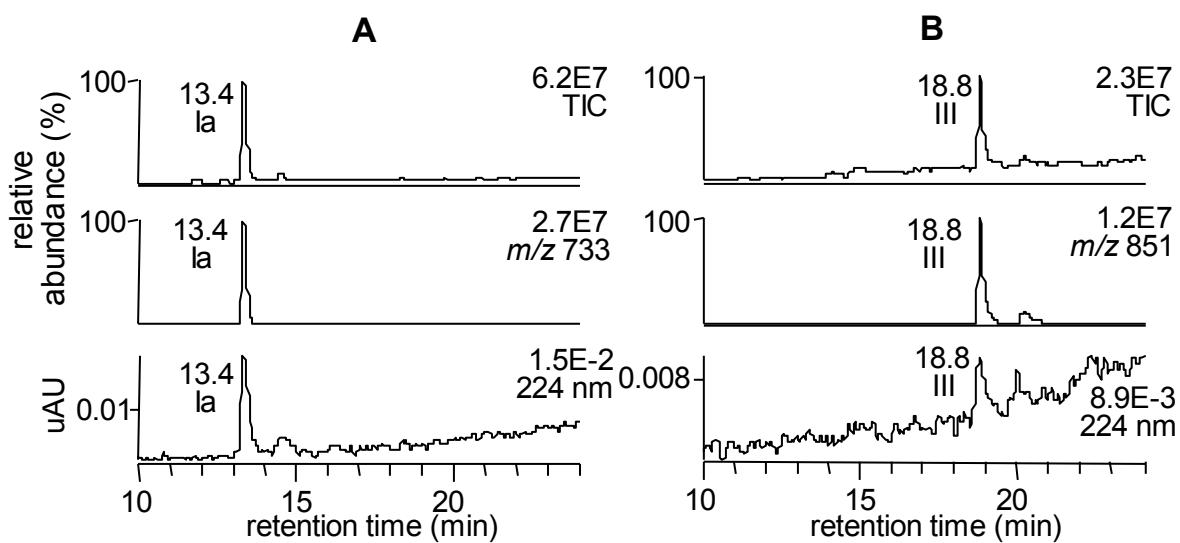


Figure S4 LC-MS Analysis of (system 1) of the reaction between adduct Ia and 3-[²H₁]-ONE. (A) Adduct Ia purified from the reaction between GSH and 3-[²H₁]-ONE (B). LC-MS analysis of the reaction between adduct Ia and 3-[²H₁]-ONE at 37 °C overnight showing the exclusive formation of adduct III.

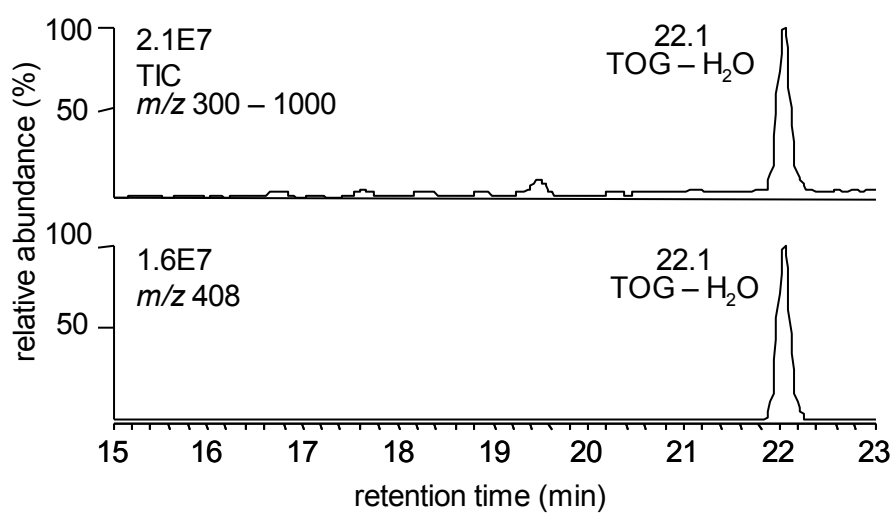


Figure S5: LC-MS analysis (system 1) of dehydrated adduct IIb from the reaction of TOG with 1 % TFA.

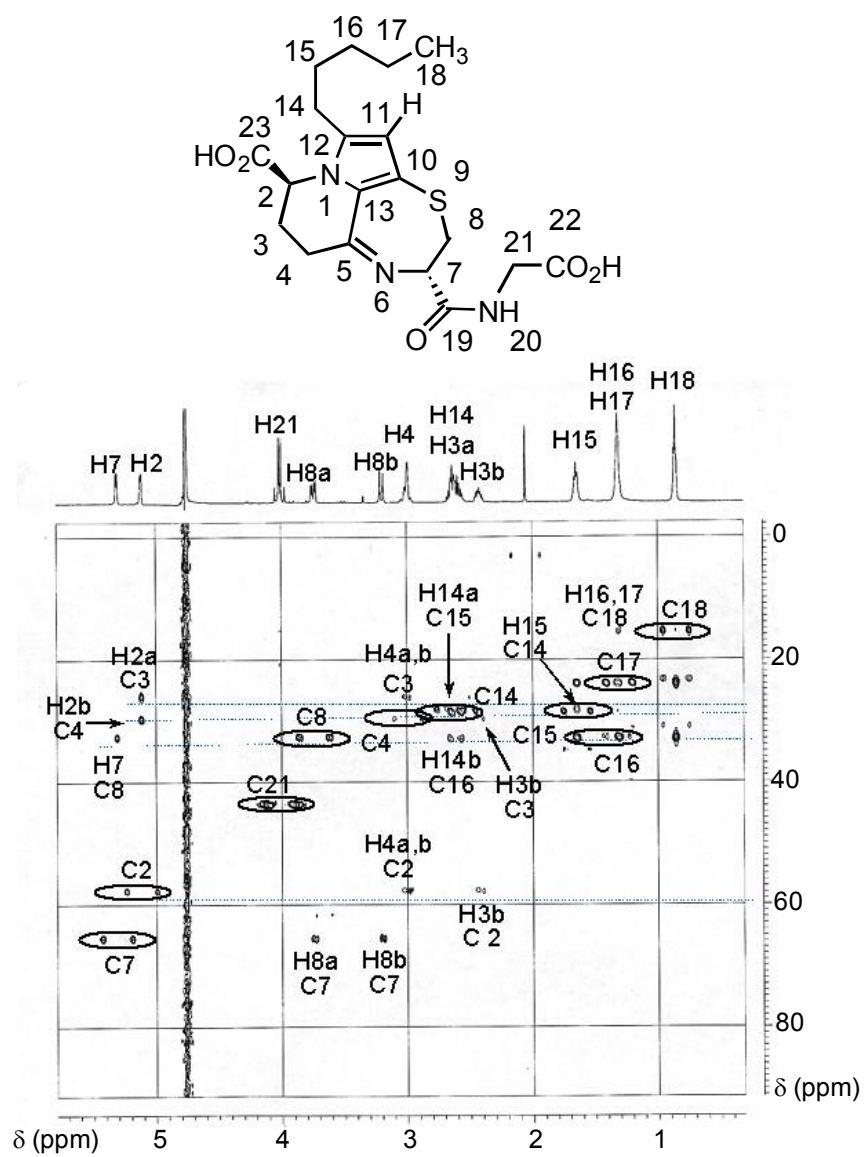


Figure S6: HMQC spectrum of dehydrated Adduct IIb.

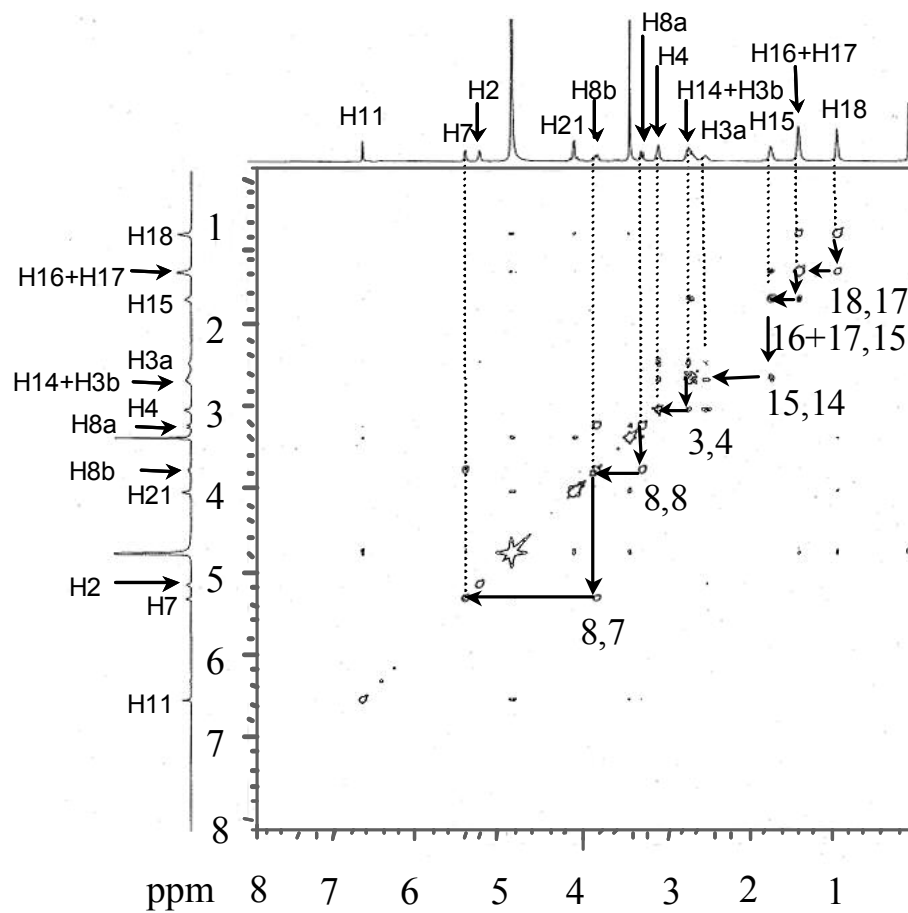


Figure S7: 2D COSY spectrum of dehydrated Adduct IIb.

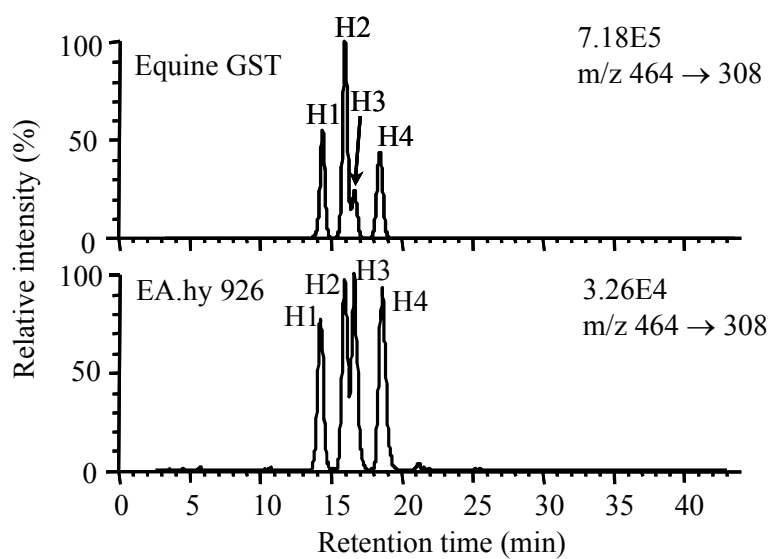


Figure S8: Separation (using LC system 6) of four (H1-H4) of the potential eight diastereomers formed in the incubation of HNE with GSH in the presence of equine GS (upper) (upper). Analysis of the HNE-GSH-adduct diastereomers formed when EA.hy 926 cells were treated with HNE (lower).

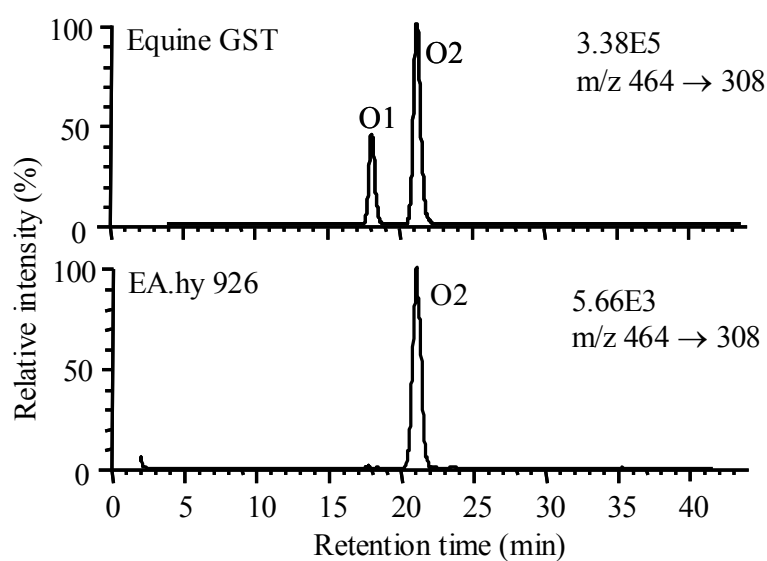


Figure S9: Separation (using LC system 6) of two (O11 and O2) of the potential four diastereomers formed in the incubation of ONO with GSH in the presence of equine GS (upper) (upper). Analysis of the ONO-GSH-adduct diastereomers formed when EA.hy 926 cells were treated with ONO (lower).