

Epitaxial Supramolecular Assembly of Fullerenes Formed by Using Coronene Template on Au(111) Surface in Solution

Soichiro Yoshimoto,^{*,†,||} Eishi Tsutsumi,[†] Ryuji Narita,[†] Yasujiro Murata,[‡] Michihisa Murata,[‡] Koichi Fujiwara,[‡]
Koichi Komatsu,^{‡,+} Osamu Ito,[§] Kingo Itaya^{*,†}

[†]*Department of Applied Chemistry, Graduate School of Engineering, Tohoku University, 6-6-07 Aoba, Sendai 980-8579, Japan.*

[‡]*Institute for Chemical Research, Kyoto University, Uji, Kyoto 611-0011, Japan.* [§]*Institute of Multidisciplinary Research for Advanced Materials, Tohoku University, Katahira, Aoba-ku, Sendai 980-8577, Japan.*

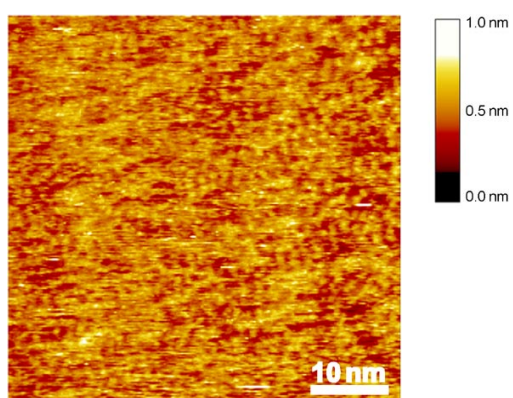


Figure S1. Typical large-scale ($50 \times 50 \text{ nm}^2$) STM image of opencage C_{60} derivative adlayer formed on the coronene-modified Au(111) surface in 0.1 M HClO_4 . Tip potential and tunneling current were 0.35 V and 2.0 nA.

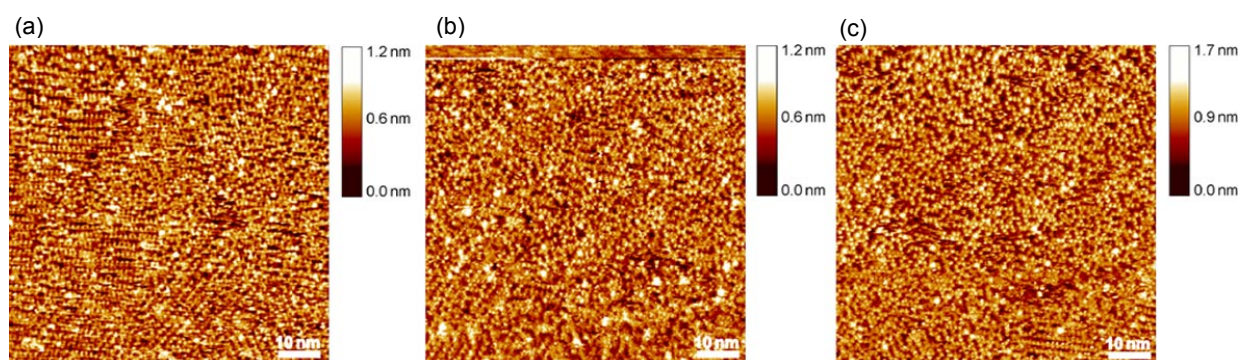


Figure S2. Typical large-scale ($75 \times 75 \text{ nm}^2$) STM images of C_{70} adlayer formed on the coronene-modified Au(111) surface in 0.1 M HClO_4 . The electrode potential was held at (a) 0.53 V, (b) and (c) 0.29 V vs RHE. Tip potential and tunneling current were 0.46 V and 0.15 nA.

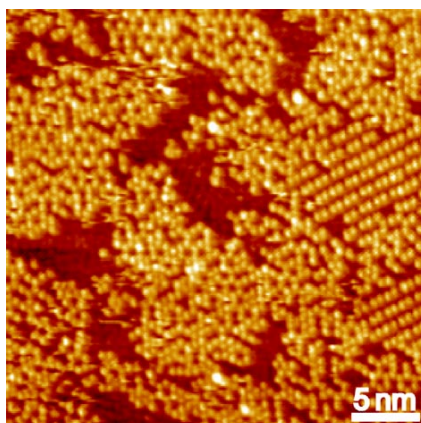


Figure S3. Typical large-scale (40 x 40 nm²) STM image of C₁₃₀ adlayer formed on the coronene-modified Au(111) surface in 0.1 M HClO₄. Tip potential and tunneling current were 0.35 V and 1.0 nA