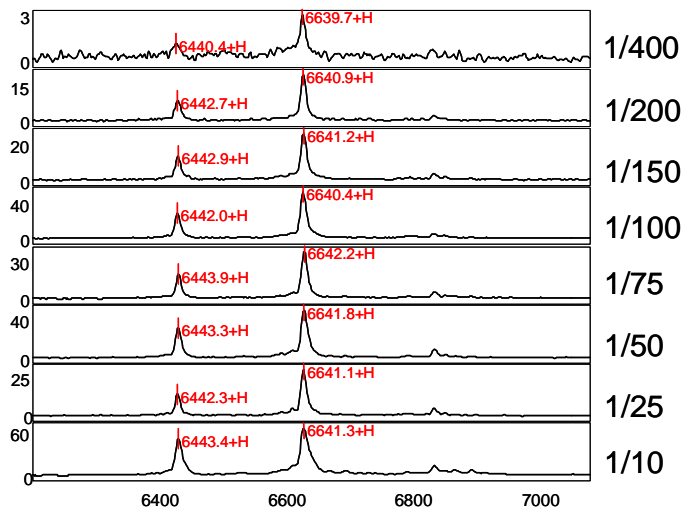
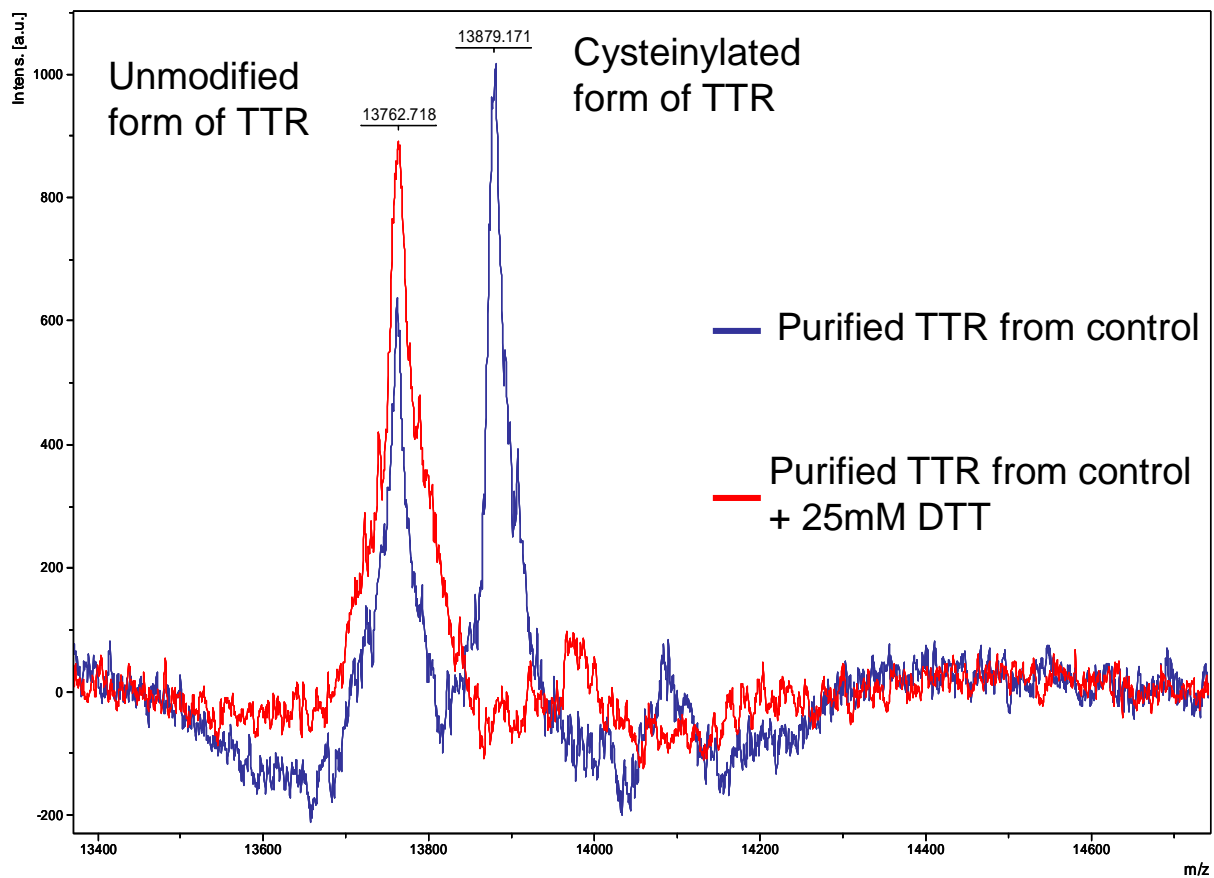


		Peak m/z=6442	Peak m/z=6641
Dilution 1/400	Intensity	1.1	3.0
	Signal/noise	2.415	6.817
	Resolution	365.28	595.54
Dilution 1/200	Intensity	7.0	15.4
	Signal/noise	16.614	37.358
	Resolution	580.45	604.41
Dilution 1/150	Intensity	9.5	18.6
	Signal/noise	19.647	39.059
	Resolution	619.59	572.04
Dilution 1/100	Intensity	20.2	37.4
	Signal/noise	36.196	68.234
	Resolution	611.14	583.89
Dilution 1/75	Intensity	14.9	28.6
	Signal/noise	28.599	55.910
	Resolution	619.58	577.34
Dilution 1/50	Intensity	22.3	36.3
	Signal/noise	46.051	76.291
	Resolution	563.82	527.87
Dilution 1/25	Intensity	10.4	22.6
	Signal/noise	24.031	53.133
	Resolution	559.71	513.51
Dilution 1/10	Intensity	51.3	66.0
	Signal/noise	83.698	109.510
	Resolution	488.59	401.06



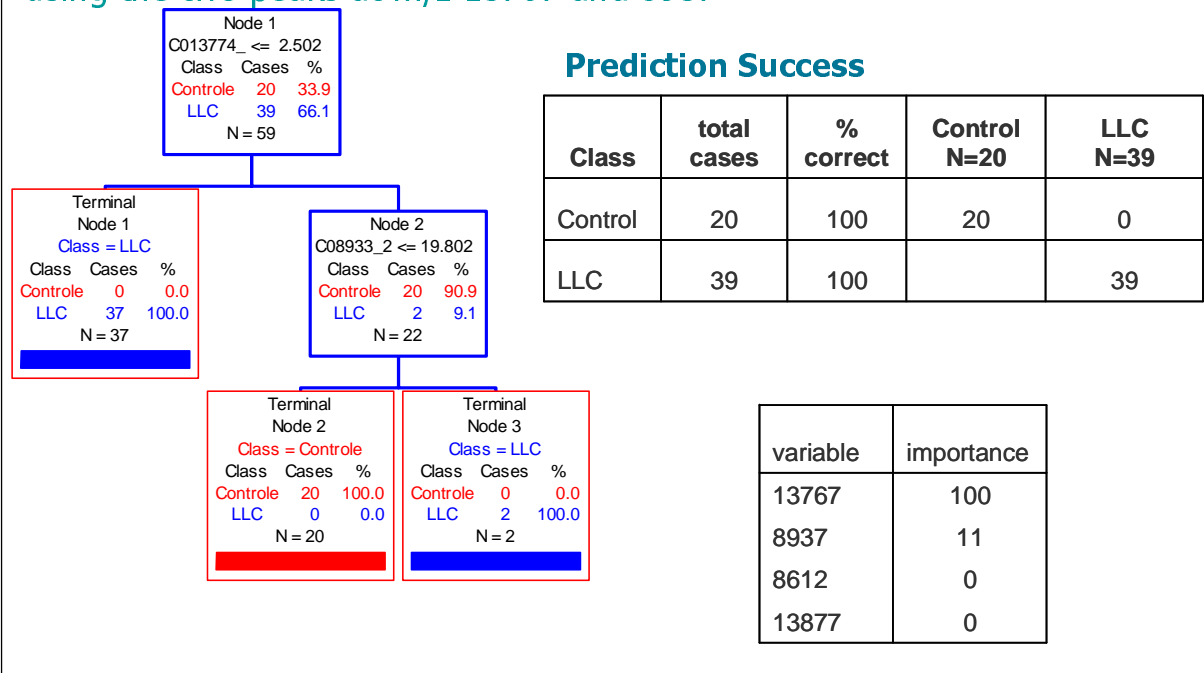
supplementary data

Figure 1: Intensity and resolution of the peaks in function of the dilution of the analyzed sample



supplementary data
Figure 2: reduction of the cysteinylated form of TTR from a control sample

Tree1: 100 % correct classification
using the two peaks at m/z 13767 and 8937



supplementary data

Figure 3: Tree of classification using CART