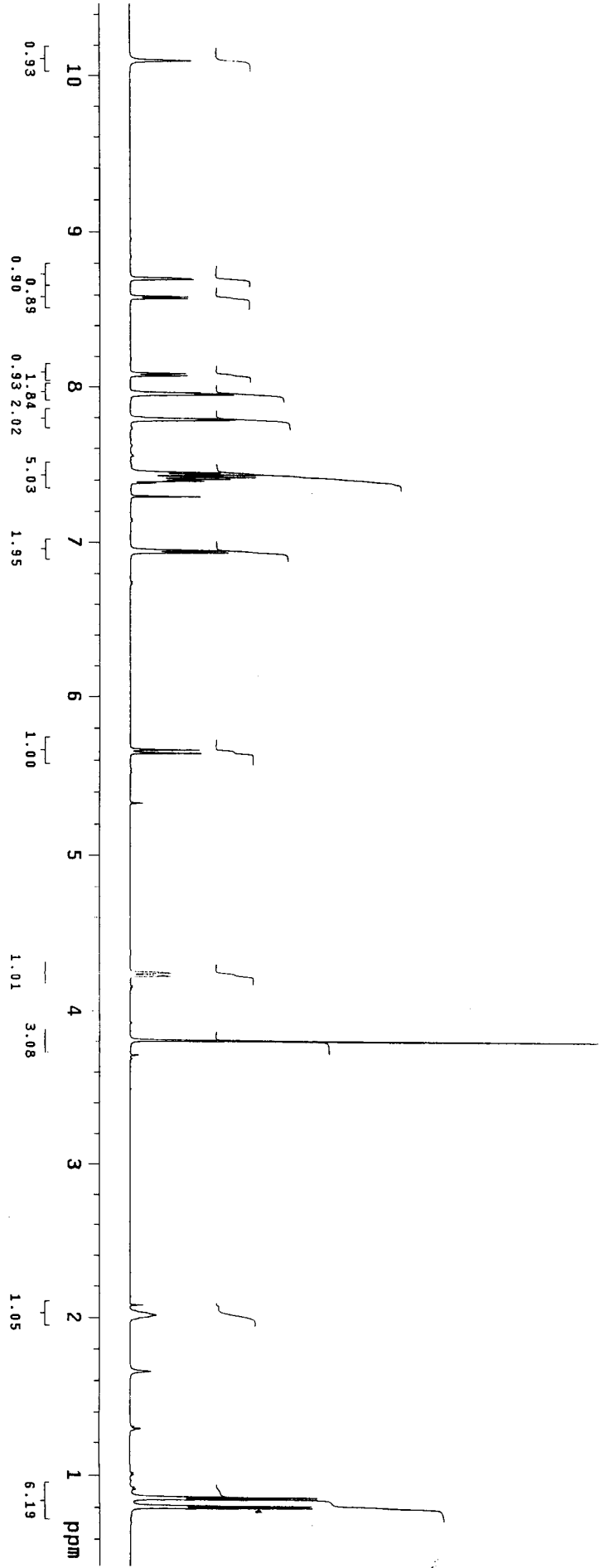
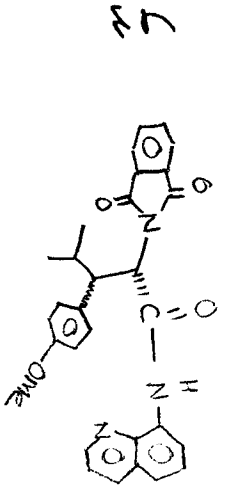


STANDARD PROTON PARAMETERS
exp2 PROTON

SAMPLE	Nov 30 2005	temp	20.0
date	Nov 30 2005	gain	not used
solvent	CDCl3	exp	0
file	exp	SPIN	0
ACQUISITION	9596.9	hst	0.008
sw	2.048	pw90	7.400
at	39310	altA	0
np	5000	FLAGS	
fb	8	11	n
bs	2	in	n
ss	2	dd	y
dl	1.000	hs	nm
nt	1e+09	not used	
ct	88	fb	0.10
TRANSMITTER	H1	fn	not used
tn	599.780	SP	254.6
sfrq	576.6	WD	6026.2
tor	60	FT1	1199.8
tpwr	3.700	FTP	173.8
pw	DECOUPLER	TP	-12.5
dn	C13	PLT	
dof	0	WC	250
dm	nmn	SC	0
decwv	49	VS	76
dpwr	14800	th	7
dmf		nm	

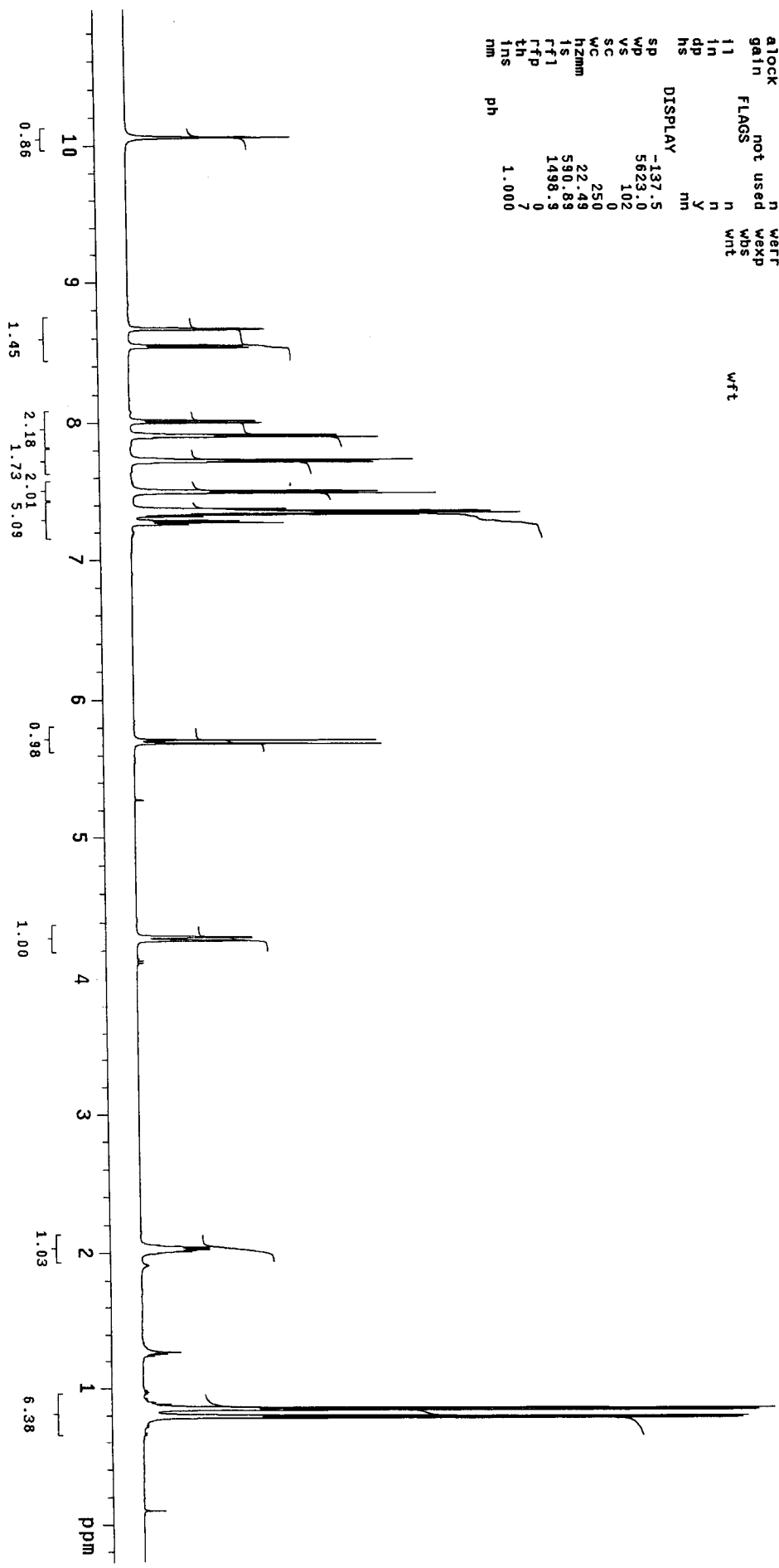


STANDARD PROTON PARAMETERS

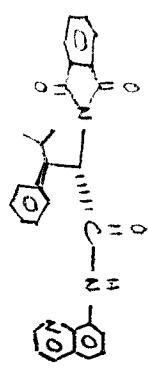
exp1 szpul1

SAMPLE	Mar 22 2006	DEC. & VT	500.211
date	Mar 22 2006	dfrq	500.211
solvent	CDCl3	dn	H1
file	exp	dpwr	32
ACQUISITION	500.211	dof	0
sfrq	500.211	dmm	nnn
tn	2.046	dmm	C
at	32768	dmg	8770
np	8000.0	dseq	1.0
sw	4000	drms	n
fb	8	homo	22.0
bs	2	temp	22.0
ss	58	PROCESSING	0.10
tpwr	5.0	lb	wfite
pw	0	wfite	ft
di	0	proc	not used
tof	1e+09	fn	math
nt	64	math	not used
ct	not used	warr	wft
alock	not used	wexp	
gain	not used	wds	
11	n	wnt	
1n	y		
dp	mn		
hs			

DISPLAY	-137.5
SP	5623.0
WP	102
VS	0
SC	250
WC	22.48
h2mm	590.83
1S	1498.3
rfl	0
rffp	7
th	1.000
ins	
nm	



10a



mp 191-193°C

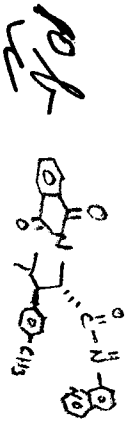
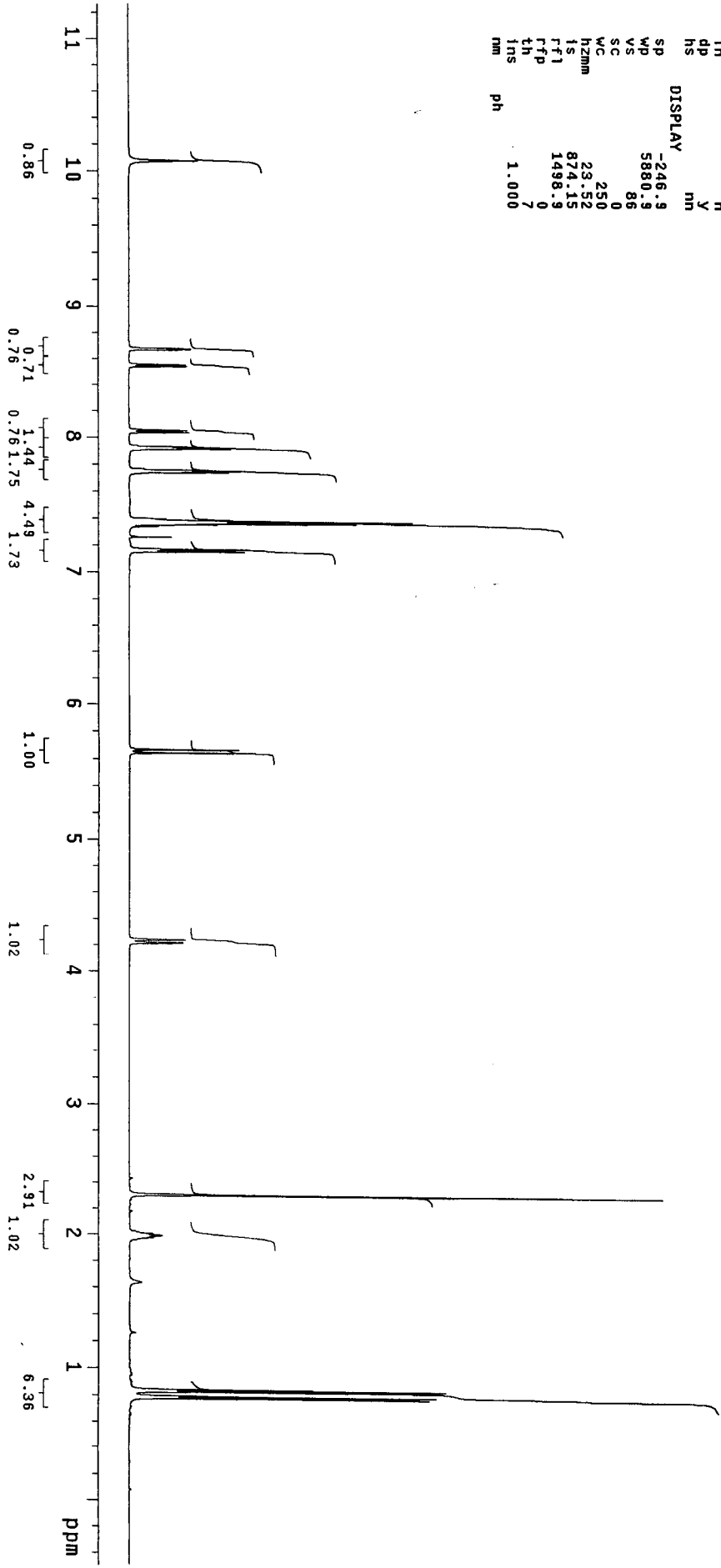
STANDARD PROTON PARAMETERS

exp8 s2pu1

date	Apr 27 2006	DEC. & VT	500.211
solvent	CDCl3	dn	H1
file	exp	dpwr	32
ACQUISITION		doF	0
sfrq	500.211	dm	nmn
in	H1	dmm	C
at	2.048	dmf	8770
np	32758	dseq	
sw	8000.0	dres	1.0
fb	4000	homo	n
bs	8	temp	22.0
ss	2	PROCESSING	
tpwr	58	1b	wt
pw	5.0	wf11e	0.10
d1	0	PROC	ft
tof	0	fn	not used
nt	1e+09	math	f
ct	136		
atock	not used	waft	
gain	n	wexp	
FLAGS	not used	wbs	
11	n	wnt	wft
in	Y		
dp	nm		
hs			

DISPLAY -246.9

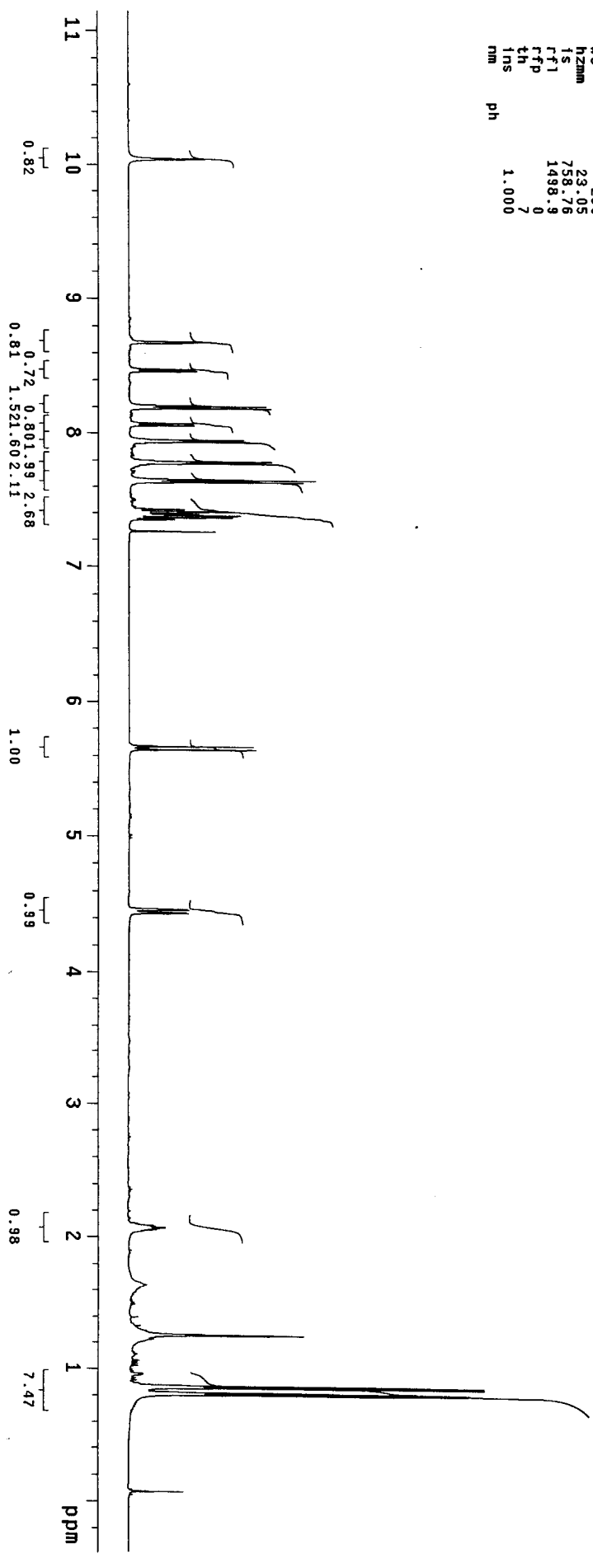
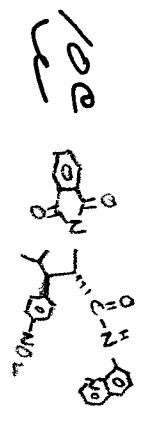
sp	5880.9
wp	86
vs	0
sc	250
wc	23.52
h2mm	874.15
is	1498.9
ff1	0
rfd	7
th	1.000
ins	
nm	



STANDARD PROTON PARAMETERS

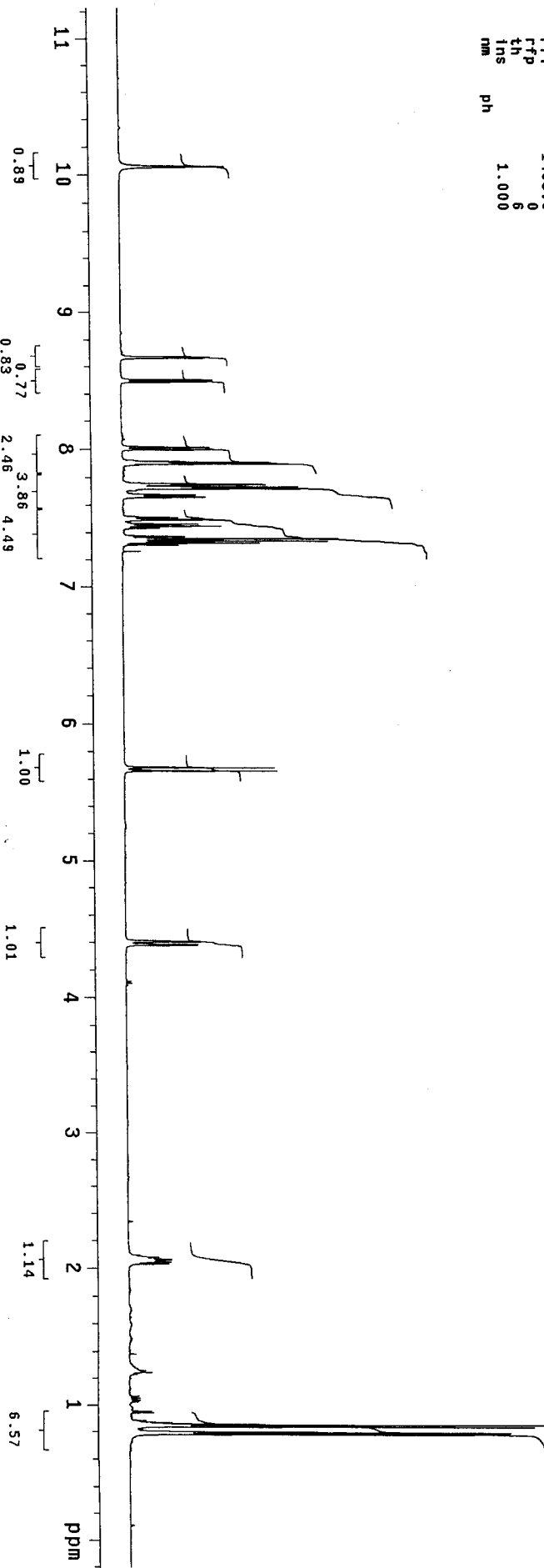
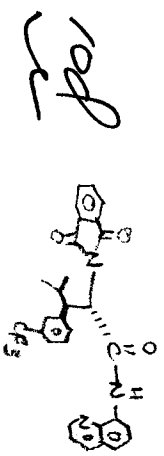
exp8 s2pu1

SAMPLE	date	Apr 27 2006	DEC. & VT	500.211
solvent	CDCl3		H1	
file	exp		32	
ACQUISITION	sfrq	500.211	dm	nmn
tn	at	H1	dmm	c
at	mp	2.048	dmf	8770
mp	sw	32758	dres	1.0
sw	fb	8000.0	homo	n
fb	bs	4000	temp	22.0
bs	ss	2	PROCESSING	0.10
ss	tpwr	58	lb	wf
tpwr	pw	5.0	wf	ft
pw	dl	0	proc	not used
dl	tof	0	fn	
tof	nt	1e+03	math	
nt	ct	56	werr	
ct	gain	not used	wexp	
gain	lock	not used	wbs	
lock	flags	not used	wnt	
flags	l1	n		
l1	l2	n		
l2	l3	y		
l3	l4	n		
l4	l5	nm		
l5	l6			
l6	l7			
l7	l8			
l8	l9			
l9	l10			
l10	l11			
l11	l12			
l12	l13			
l13	l14			
l14	l15			
l15	l16			
l16	l17			
l17	l18			
l18	l19			
l19	l20			
l20	l21			
l21	l22			
l22	l23			
l23	l24			
l24	l25			
l25	l26			
l26	l27			
l27	l28			
l28	l29			
l29	l30			
l30	l31			
l31	l32			
l32	l33			
l33	l34			
l34	l35			
l35	l36			
l36	l37			
l37	l38			
l38	l39			
l39	l40			
l40	l41			
l41	l42			
l42	l43			
l43	l44			
l44	l45			
l45	l46			
l46	l47			
l47	l48			
l48	l49			
l49	l50			
l50	l51			
l51	l52			
l52	l53			
l53	l54			
l54	l55			
l55	l56			
l56	l57			
l57	l58			
l58	l59			
l59	l60			
l60	l61			
l61	l62			
l62	l63			
l63	l64			
l64	l65			
l65	l66			
l66	l67			
l67	l68			
l68	l69			
l69	l70			
l70	l71			
l71	l72			
l72	l73			
l73	l74			
l74	l75			
l75	l76			
l76	l77			
l77	l78			
l78	l79			
l79	l80			
l80	l81			
l81	l82			
l82	l83			
l83	l84			
l84	l85			
l85	l86			
l86	l87			
l87	l88			
l88	l89			
l89	l90			
l90	l91			
l91	l92			
l92	l93			
l93	l94			
l94	l95			
l95	l96			
l96	l97			
l97	l98			
l98	l99			
l99	l100			



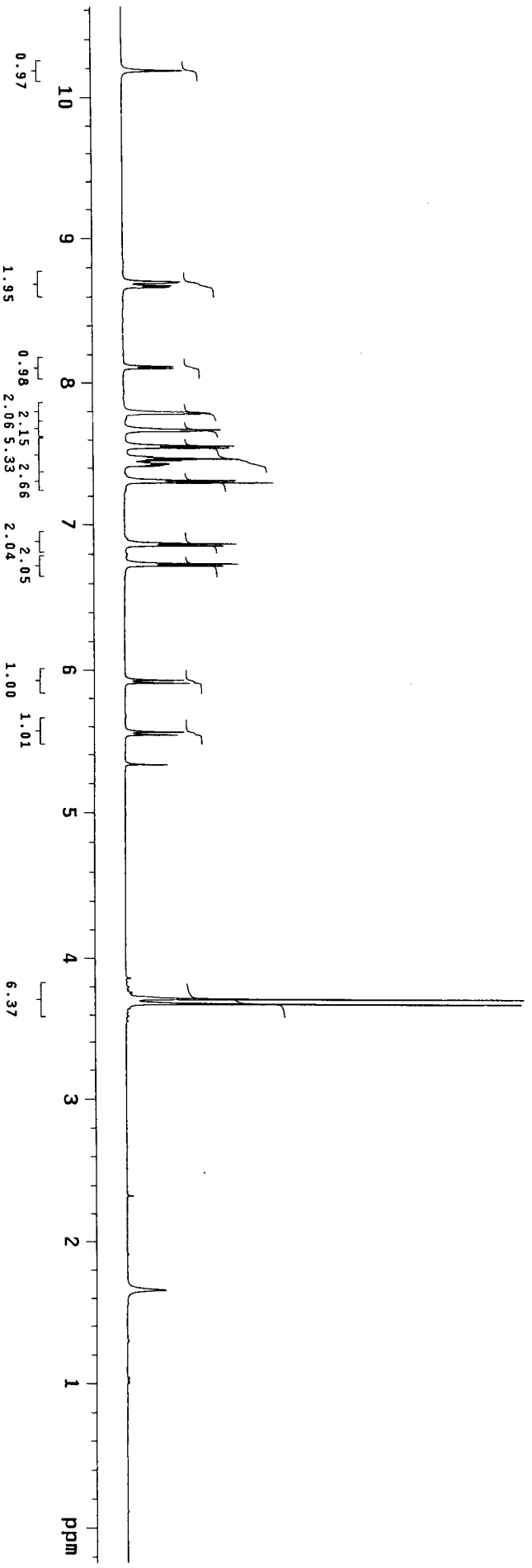
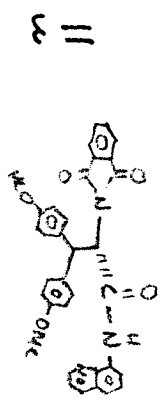
STANDARD PROTON PARAMETERS

exp1 s2pu1
 SAMPLE DEC. & VT
 date Apr 26 2006 dfrq 500.211
 solvent CDC13 dn H1
 file exp dpwr 32
 ACQUISITION dof 0
 sfrq 500.211 dm nm
 tn H1 dnm C
 at 2.048 dmf 8770
 np 32768 dseq
 sw 8000.0 dres 1.0
 fb 4000 homo n
 bs 8 temp 22.0
 ss 2 ,PROCESSING
 tpwr 58 lb 0.10
 pw 5.0 wf file ft
 di 0 proc not used
 tof 1e+09 fn math f
 ct 152
 atlock not used werr
 gain not used wexp
 flags not used wbs
 11 n wft
 1n n
 dp y
 hs nm
 DISPLAY
 sp -105.3
 wd 5721.2
 vs 67
 sc 0
 WC 250
 Hzmm 22.88
 15 355.67
 rff1 1498.9
 rfp 0
 th 6
 ins 1.000
 nm ph



STANDARD PROTON PARAMETERS
 exp2 PROTON

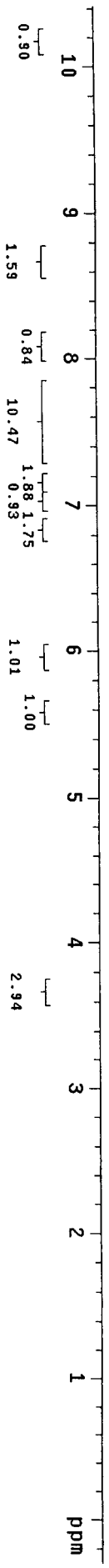
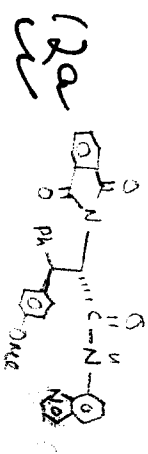
date	Apr 14 2006	temp	22.0
solvent	CDCl3	gain	not used
file	exp	spin	not used
ACQUISITION		hst	0.008
sw	9596.9	pw90	6.400
at	3.414	altA	0
np	65536	FLAGS	
fb	5000	11	n
bs	8	in	n
ss	2	dp	y
dl	1.000	hs	nm
nt	1e+09	PROCESSING	0.10
ct	40	1b	not used
tn	TRANSMITTER	fn	0.10
sf	H1	DISPLAY	
tor	539.780	SP	-144.0
tpwr	576.6	WD	6517.1
pw	60	FT1	1199.8
DECOUPLER	3.280	FTP	0
dn	C13	TP	35.4
dof	0	TP	-13.3
dm	nm	WC	250
decwawe	49	SC	0
dpwr	14800	VS	65
dmf		th	7



STANDARD PROTON PARAMETERS

exp1 s2pu1

SAMPLE	7 2006	DEC. & VI	500.211
date	Feb	dfreq	HI
solvent	CDCl3	dn	32
file	exp	dpwr	0
ACQUISITION	500.211	dof	0
sfrq	500.211	dm	nmh
tn	HI	dmm	C
at	2.048	dmf	8770
nd	32758	dseg	
sw	8000.0	dres	1.0
fd	4000	homo	n
bs	8	temp	22.0
ss	2	.PROCESSING	
tpwr	58	lb	0.10
pwr	5.0	wtfile	
dl	0	proc	ft
tof	0	fn	not used
nt	1e+09	math	f
ct	80		
atlock	n	werr	
gain	not used	wexp	
flags	n	wbs	wft
ll	n	wnt	
in	y		
dp	nm		
hs			
DISPLAY			
sp	-148.8		
wp	5359.4		
vs	83		
sc	0		
wc	250		
h2mm	21.44		
is	389.20		
rfl	1496.9		
rffp	0		
tn	7		
lms	1.000		
nm			

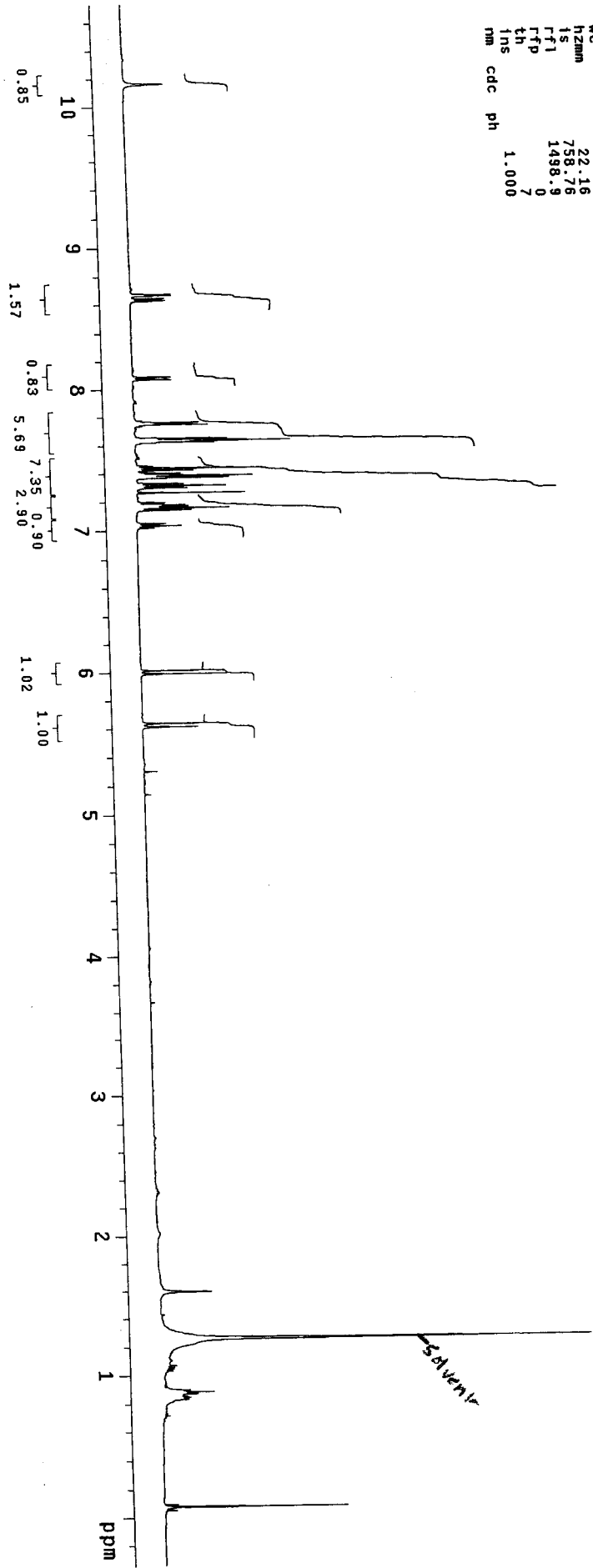
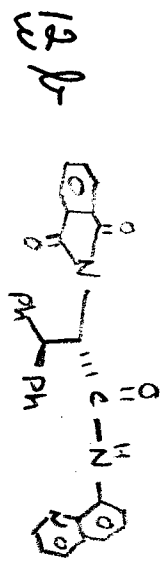


STANDARD PROTON PARAMETERS

exp2 s2pui

SAMPLE	9 2006	DEC. & VT	500.211
date	Apr	dfrc	32
solvent	CDC13	dn	H1
file	exp	dpwr	0
ACQUISITION	500.211	dof	nmh
sfrc	H1	dmm	C
tn	2.048	dmf	8770
at	32768	dseq	
np	8000.0	dres	1.0
sw	4000	homo	n
fb	2	temp	22.0
bs	2	PROCESSING	0.10
ss	58	lb	wfite
tpwr	5.0	proc	ft
pw	0	fn	not used
di	0	math	f
tof	1e+09		
nt	72		
ct	not used		
alock	n	werr	
gain	n	wexp	
flags	n	wbs	
l1	n	wft	
l2	Y		
l3	n		
l4	Y		
l5	n		
l6	Y		
l7	n		
l8	Y		
l9	n		
l10	Y		
l11	n		
l12	Y		
l13	n		
l14	Y		
l15	n		
l16	Y		
l17	n		
l18	Y		
l19	n		
l20	Y		
l21	n		
l22	Y		
l23	n		
l24	Y		
l25	n		
l26	Y		
l27	n		
l28	Y		
l29	n		
l30	Y		
l31	n		
l32	Y		
l33	n		
l34	Y		
l35	n		
l36	Y		
l37	n		
l38	Y		
l39	n		
l40	Y		
l41	n		
l42	Y		
l43	n		
l44	Y		
l45	n		
l46	Y		
l47	n		
l48	Y		
l49	n		
l50	Y		
l51	n		
l52	Y		
l53	n		
l54	Y		
l55	n		
l56	Y		
l57	n		
l58	Y		
l59	n		
l60	Y		
l61	n		
l62	Y		
l63	n		
l64	Y		
l65	n		
l66	Y		
l67	n		
l68	Y		
l69	n		
l70	Y		
l71	n		
l72	Y		
l73	n		
l74	Y		
l75	n		
l76	Y		
l77	n		
l78	Y		
l79	n		
l80	Y		
l81	n		
l82	Y		
l83	n		
l84	Y		
l85	n		
l86	Y		
l87	n		
l88	Y		
l89	n		
l90	Y		
l91	n		
l92	Y		
l93	n		
l94	Y		
l95	n		
l96	Y		
l97	n		
l98	Y		
l99	n		
l100	Y		

nm cdc ph 1.000

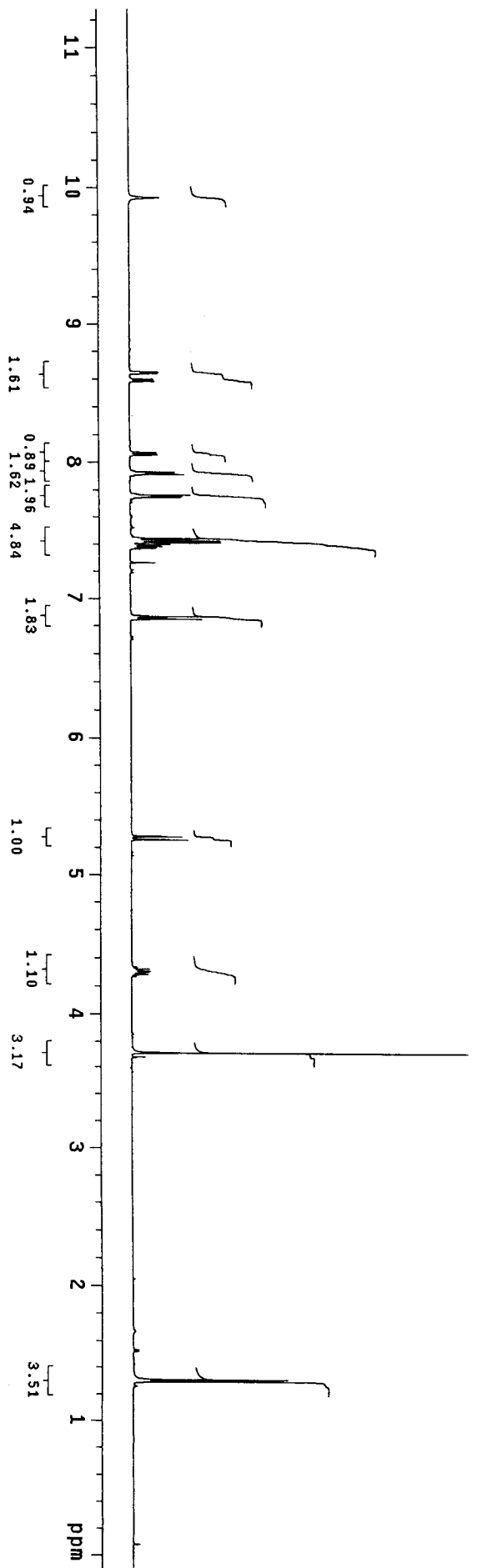
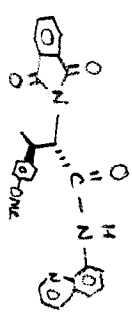


STANDARD PROTON PARAMETERS

exp3 s2pu1

date	Feb 8 2006	DEC. & VT	500.211
solvent	CDCl3	dn	H1
f1f8	exp	dpwr	32
ACQUISITION			
sfrq	500.211	dm	0
ln	H1	dmm	nmh
at	2.048	dresq	C
np	32768	dsesq	8770
sw	8000.0	homo	1.0
fb	4000	temp	n
bs	2	PROCESSING	22.0
ss	58	lb	0.10
tpwr	5.0	wf1f1e	
di	0	PROC	ft
tof	0	fn	not used
nt	1e+09	math	f
ct	72		
alock	n	wefr	
gain	not used	wexp	
l1	n	wbs	
l2	y	wnt	wrt
l3	nh		
l4			
l5			
l6			
l7			
l8			
l9			
l10			
l11			

ph 1.000



STANDARD PROTON PARAMETERS

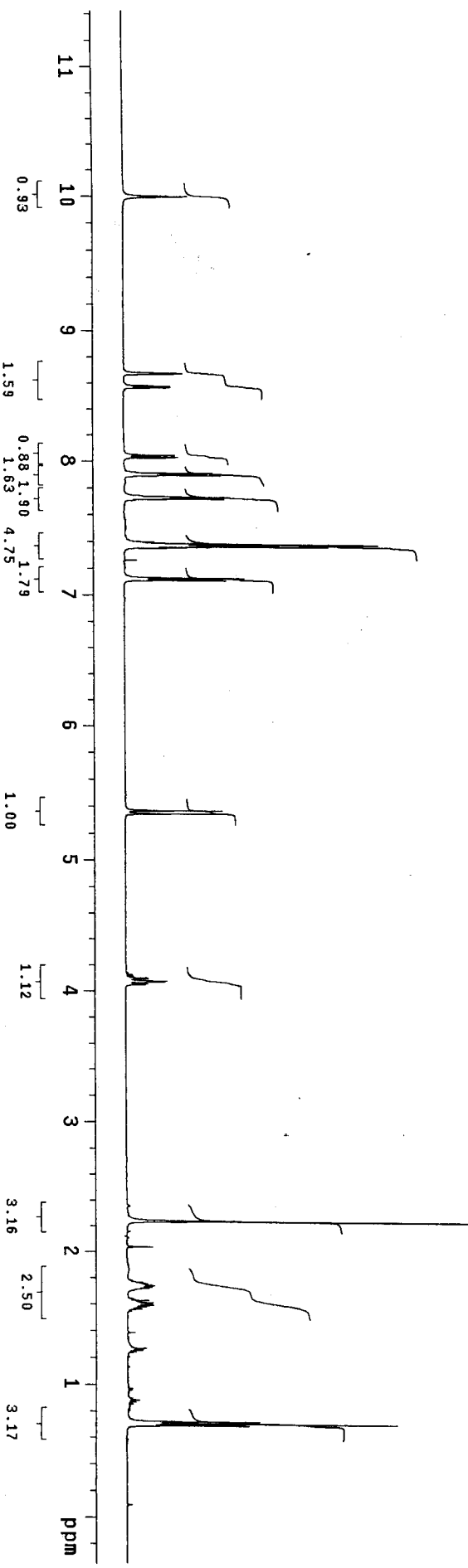
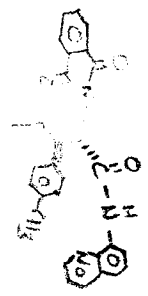
exp4 s2pu1

SAMPLE	May 1 2006	DEC. & VT	500.211
date	May 1 2006	dfrq	500.211
solvent	CDCl3	dn	HI
file	exp	dpwr	32
ACQUISITION	exp	dof	0
sfrq	500.211	dm	nmn
tn	HI	dmm	c
at	2.048	dmsq	8770
np	32768	drss	1.0
sw	8000.0	homo	n
fb	4000	temp	22.0
bs	8	PROCESSING	
ss	2	lb	0.10
tpwr	58	wf file	
pw	5.0	proc	ft
d1	0	tn	not used
tof	0	math	f
nt	1e+09	werr	
cl	96	wexp	
atlock	not used	wbs	
gain	n	wnt	wft
11	n		
in	y		
dp	n		
hs	nm		

DISPLAY

sp	-177.6
wp	5892.6
vs	73
sc	0
wc	250
h2mm	23.57
is	455.26
rt1	1498.3
rfp	0
th	59
ins	1.000

nm
ph



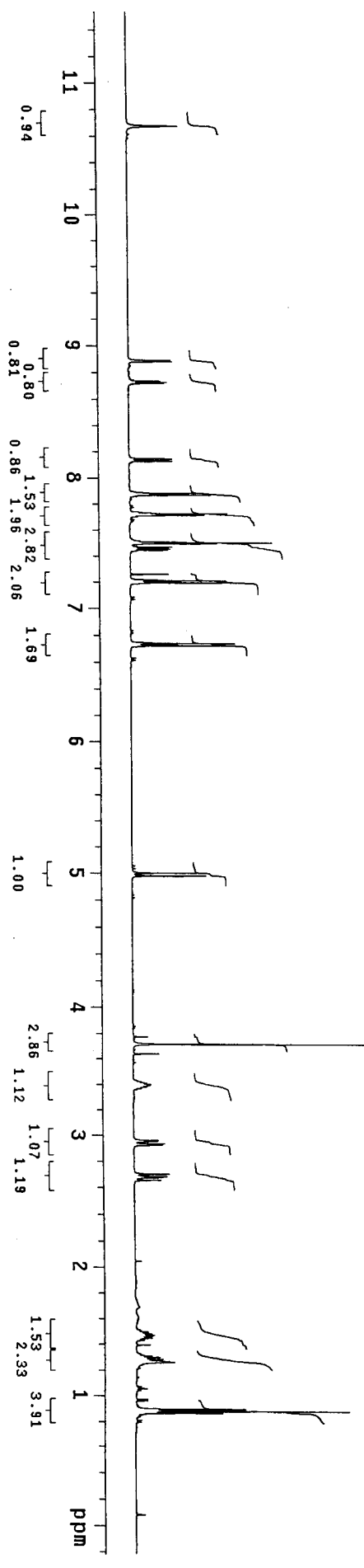
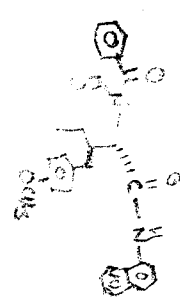
STANDARD PROTON PARAMETERS

exp4 s2pul

date	SAMPLE 1 2006	dfrrq	DEC. & VT	500.211
solvent	May CDC13	dn	H1	
file		dpwr	32	
ACQUISITION	exp	dof	0	
sfrq	500.211	dm	nmn	
tn	H1	dmm	C	
at	2.048	dnt	8770	
np	32768	dseq		
sw	8000.0	dres	1.0	
fb	4000	homo	n	
bs	2	temp	22.0	
ss		PROCESSING		
tpwr	58	lb	0.10	
pw	5.0	wffile		
di	0	proc	ft	
tof	0	fn	not used	
nt	1e+09	math	f	
ct	144			
atlock	n	werr		
gain	not used	wexp		
flags	n	wbs		
	n	wnt	wft	
in	Y			
dp	n			
hs	nm			

DISPLAY -110.2

SP	WD	VS	SC	WC	h2mm	IS	rfl	rffp	th	lms	nm
	5879.4	89	0	250	23.52	268.36	1498.9	0	7	1.000	ph



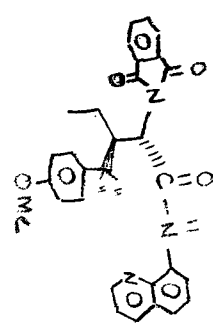
STANDARD PROTON PARAMETERS

expl szpu1

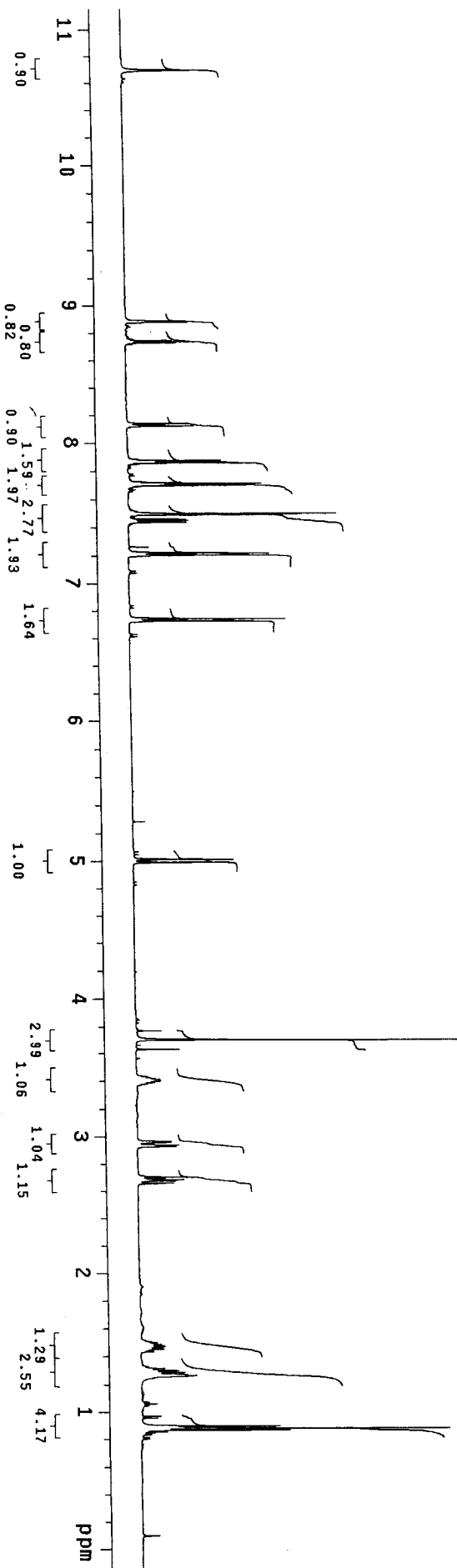
SAMPLE	Mar 22 2006	DEC. & VT	500.211
date	Mar 22 2006	dfrq	500.211
solvent	CDC13	dn	H1
file	exp	dpwr	32
ACQUISITION	500.211	dof	0
sfrq	500.211	dm	nmn
ln	H1	dmm	C
at	2.048	dmsq	8770
np	32768	dres	1.0
sw	8000.0	homo	n
fb	4000	temp	22.0
bs	2	PROCESSING	0.10
ss	58	lb	wf1file
tpwr	5.0	proc	ft
dl	0	fn	not used
tof	0	math	f
nt	1e+09	weff	wft
ct	88	wexp	
alock	not used	wds	
gain	n	wnt	
11	n		
in	y		
dp	nn		
hs			

DISPLAY -73.1
 SP 5651.9
 WP 127
 VS 0
 WC 250
 hzmm 22.61
 IS 388.20
 rfi 1498.9
 rfp 0
 th 7
 tns 1.000
 nm

14



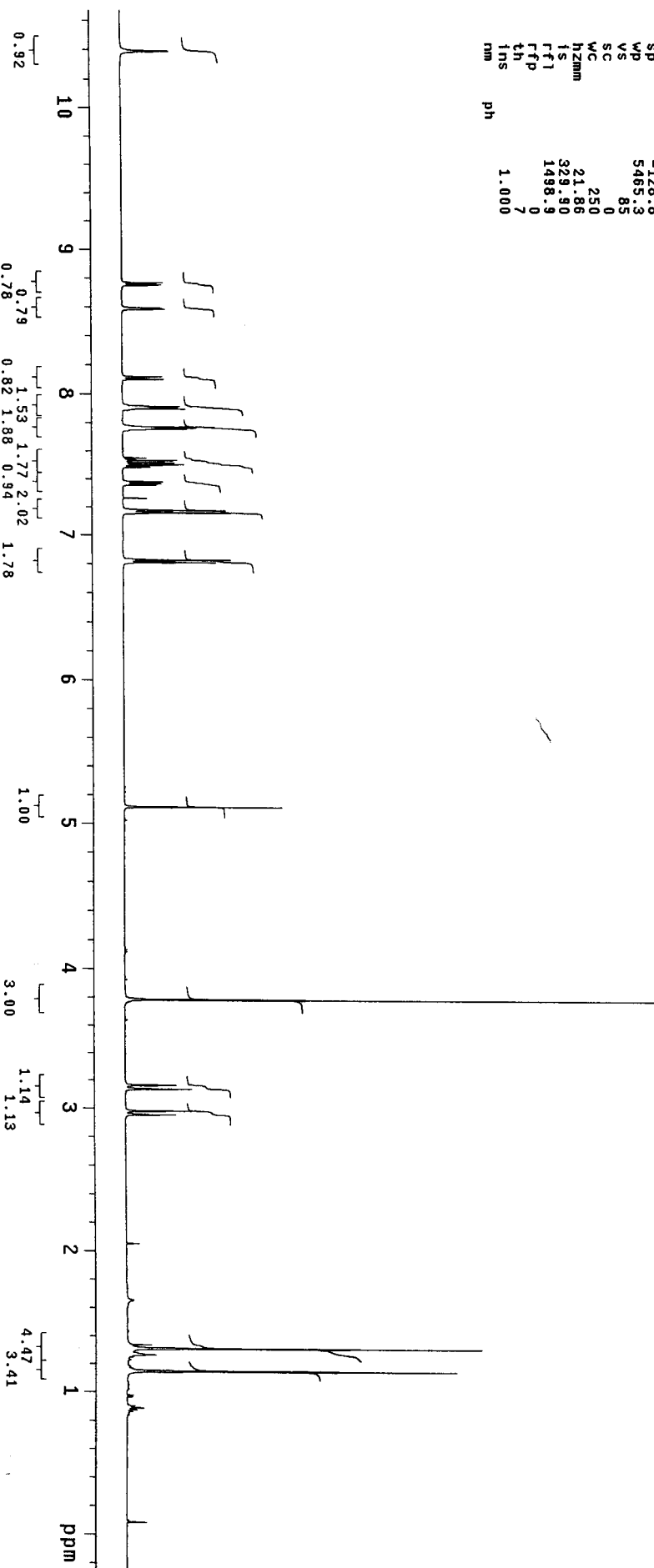
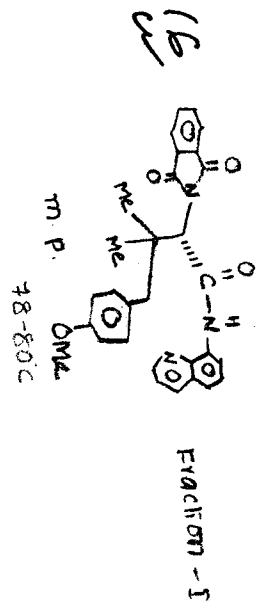
m.p. 62-65°C



STANDARD PROTON PARAMETERS

exps s2pu1

SAMPLE Mar 22 2006 DEC. 4 VT 500.211
 date Mar 22 2006 dfreq 500.211
 solvent CDCl3 dn H1
 file CDC13 dpwr 32
 ACQUISITION exp dof 0
 sfrq 500.211 dm nmh
 tn H1 dmm C
 at 2.048 dmf 8770
 nd 32768 dseg 1.0
 sw 8000.0 dres n
 fd 4000 homo temp 22.0
 bs 2 .PROCESSING 0.10
 ss 58 lb wtfile
 tpwr 5.0 wftfile ft
 dl 0 proc fn not used
 tof 0 math not used
 nt 1e+09 math not used
 ct 72 werr f
 atlock not used werr
 gain not used wbs
 flags not used wbs
 i1 n wft
 in y
 dp y
 hs nn
 DISPLAY -128.8
 sp wp 5485.3
 vs 85
 sc 0
 wc 250
 hzmm 21.86
 is 329.90
 rfi 1498.9
 rfp 0
 th 7
 tns 1.000
 nm ph



STANDARD PROTON PARAMETERS

exps s2pu1

SAMPLE Mar 22 2006 DEC. & VT 500.211

date Mar 22 2006 dfrq 500.211

solvent CDC13 dn H1

file exp dpvr 32

ACQUISITION 500.211 dm 0

sfreq 500.211 dmf mnh

tn H1 dmm C

at 2.048 dseq 8770

np 32768 dres 1.0

sw 8000.0 homo n

fb 4000 temp 22.0

bs 8

ss 2 PROCESSING 0.10

tpwr 58 1b wfile

pw 5.0 wfile ft

di 0 fn not used f

tof 0 fn math

nt 1e+09 math not used f

ct 88

alock n warr

gain not used wexp

flags n wds wft

ll n

in y

dp y

hs mn

DISPLAY -56.0

sp 5445.3

wp 79

vs 0

sc 250

wc 21.78

h2amm 378.98

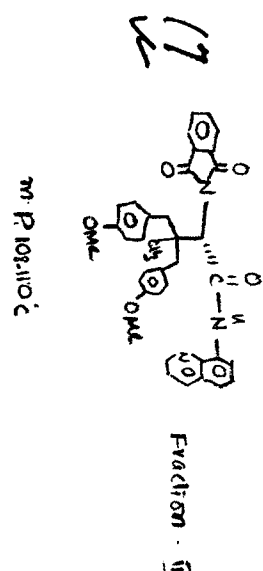
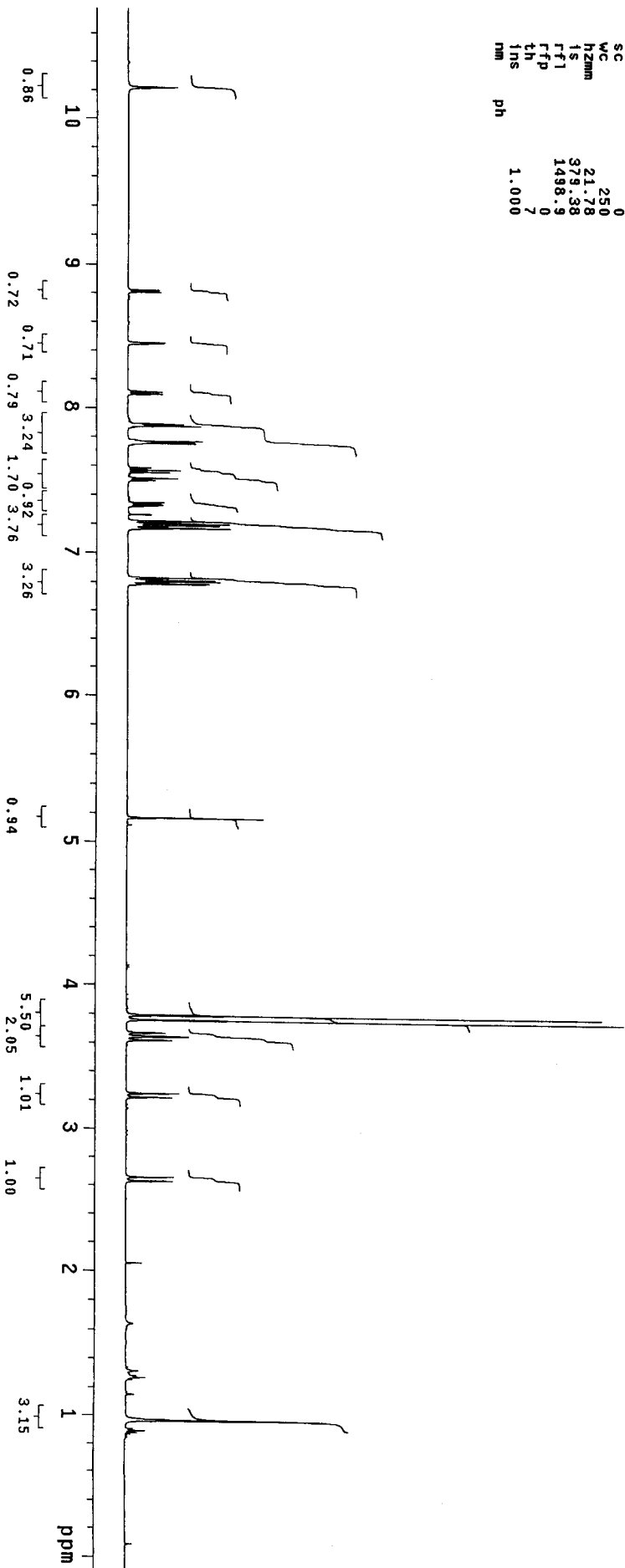
is 1498.9

ftl 0

rfp 7

th 1.000

ins nm



STANDARD PROTON PARAMETERS

exp1 szpu1
 SAMPLE 7 2006 DEC. & VT 500.211
 date Feb CDC13
 solvent exp H1
 title 32
 ACQUISITION 0
 sffrq 500.211 dm
 tn H1 dnm
 at 2.048 dmf
 np 32768 dseg
 sw 8000.0 dres
 fd 4000 homo
 bs 2 temp
 ss 58 PROCESSING 0.10
 tpwr 5.0 wft
 dl 0 wft
 tof 0 proc
 nt 1e+09 math
 ct 104
 alock not used
 gain not used
 flags not used
 in n
 dn y
 hs nm
 DISPLAY 228.2
 sp 5604.0
 wp 82
 vs 0
 sc 250
 wc hzmm 22.42
 is 185.08
 rfl 1498.9
 rfp 0
 ln 7
 lns 1.000
 nm
 ph

