

## SUPPORTING INFORMATION

# *Metabolomics by <sup>1</sup>H-HRMAS-NMR of Tomato Plants Treated with two Secondary Metabolites Isolated from Trichoderma*

Pierluigi Mazzei,<sup>\*,†</sup> Francesco Vinale,<sup>‡</sup> Sheridan Lois Woo,<sup>‡,§</sup>

Alberto Pascale,<sup>§</sup> Matteo Lorito,<sup>‡,§</sup> Alessandro Piccolo,<sup>†,§</sup>

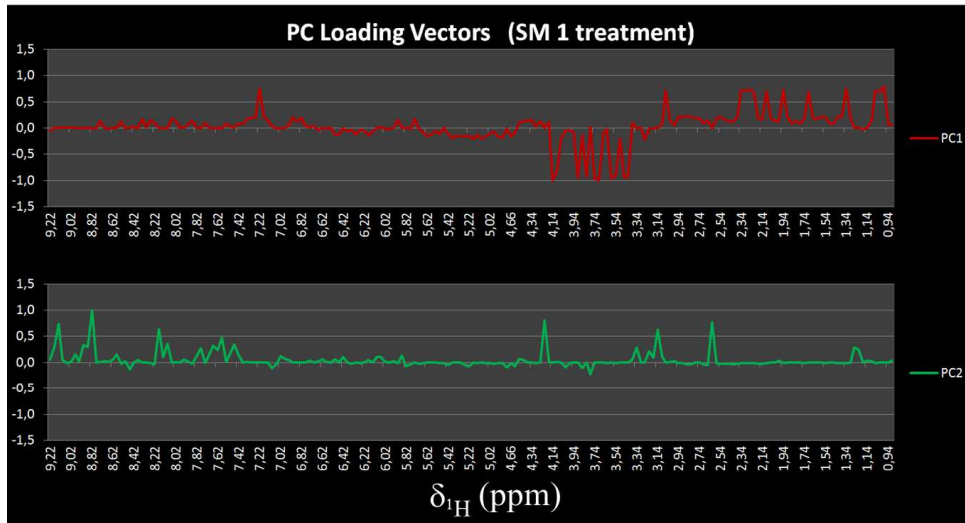
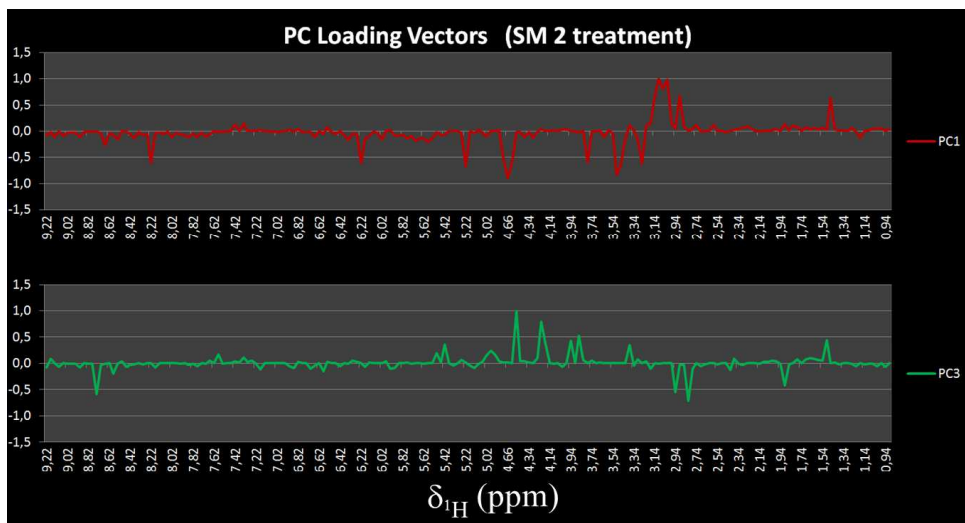
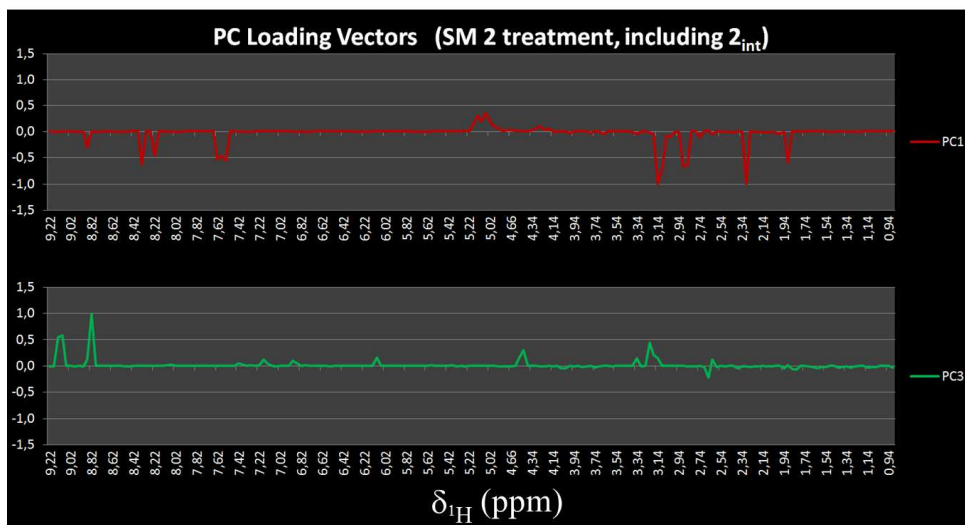
<sup>†</sup>Centro Interdipartimentale per la Risonanza Magnetica Nucleare per l'Ambiente, l'Agro-Alimentare ed i Nuovi Materiali (CERMANU),  
Università di Napoli Federico II, Via Università 100, 80055 Portici (NA), Italy

<sup>‡</sup>CNR, Istituto per la Protezione Sostenibile delle Piante via Università 133, 80055 Portici (NA), Italy.

<sup>§</sup>Dipartimento di Agraria, Università degli Studi di Napoli Federico II via Università 100, 80055 Portici (NA), Italy.

\* Corresponding Author (Tel: +39 0812539448; Fax: +39 0812539186; E-mail:  
pierluigi.mazzei@unina.it)

Number of Supporting Figure: 1

**A****B****C**

**Figure S1.** Loading vectors related to the PCA score plots shown in Figures 6A (A; PC1 vs PC2 accounting for a variance of 46.1 and 12.0%, respectively), 6B (B; PC1 vs PC3 accounting for a variance of 23.9 and 12.6%, respectively) and 6C (C; PC1 vs PC3 accounting for a variance of 37.6 and 7.8%, respectively). For each principal component plot, the intensities of loading vectors have been proportionally scaled in such a way that the most intense vector corresponds to the value of 1 or -1, depending on vector direction.