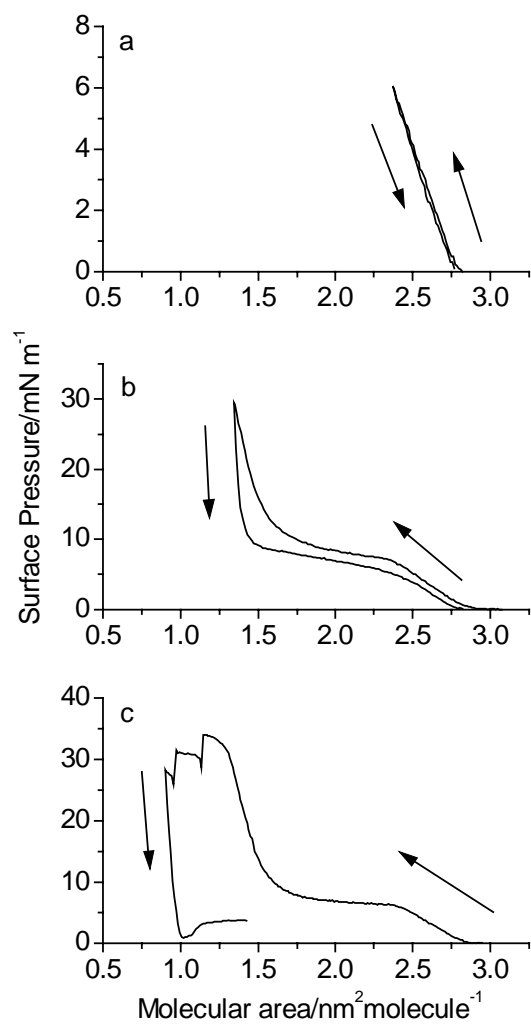


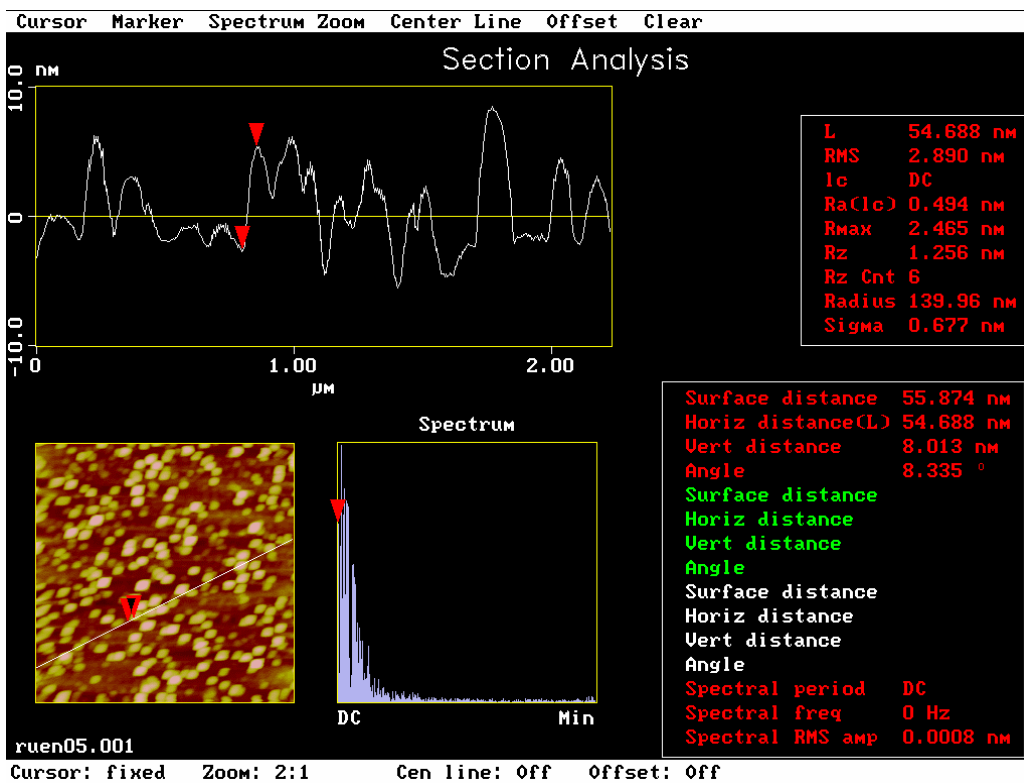
**Supporting Materials:**

**Studies of Langmuir–Blodgett Films of an Ion  
Pair Metal Complex Containing Eu(III)–Ru(II)  
Dual Chromophores**

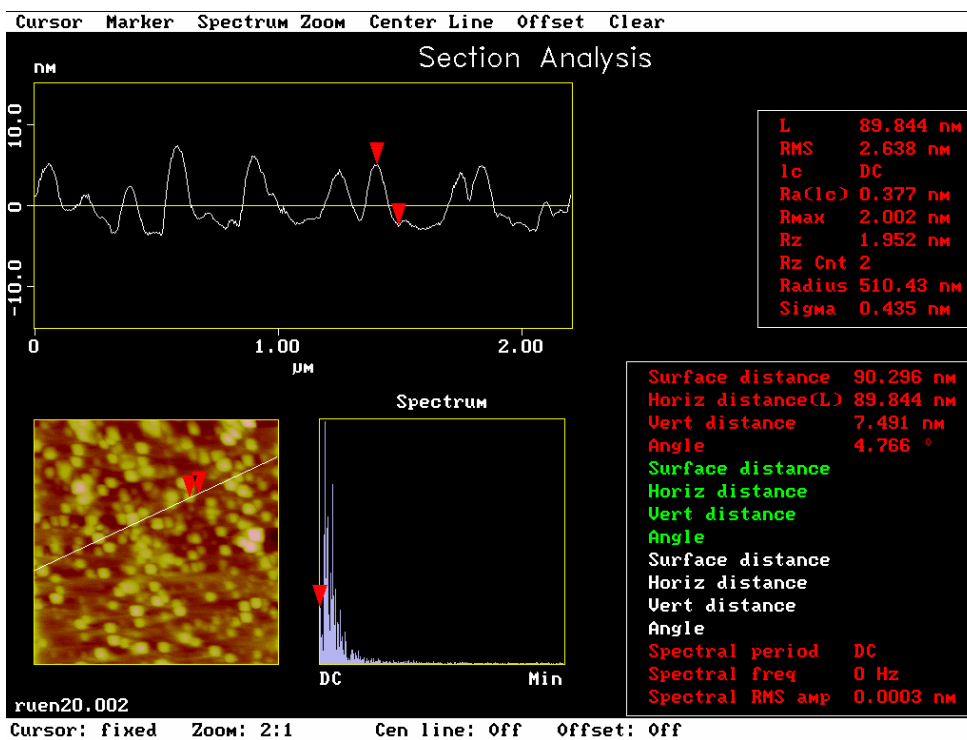
*Li-Hua Gao, Ke-Zhi Wang,\* Li Cai, Hao-Xu Zhang, Lin-Pei Jin, Chun-Hui Huang,  
and Hong-Jun Gao*



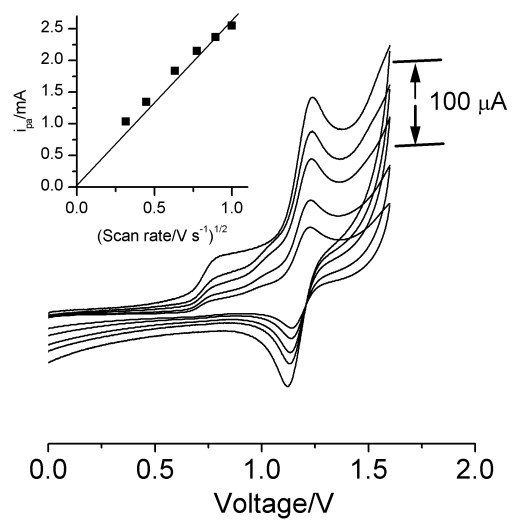
**Figure S1.** The compression-expansion isotherms at reversal pressures of 6 mN m<sup>-1</sup> (a), 30 mN m<sup>-1</sup> (b) and 35 mN m<sup>-1</sup> (c).



**Figure S2.** An AFM image of monolayer film of **1** deposited at  $5 \text{ mN m}^{-1}$ .



**Figure S3.** An AFM image of monolayer film of **1** deposited at  $20 \text{ mN m}^{-1}$ .



**Figure S4.** Cyclic voltammograms of **1** in CH<sub>3</sub>CN at scan rates of 0.25–1.0 V s<sup>-1</sup>.