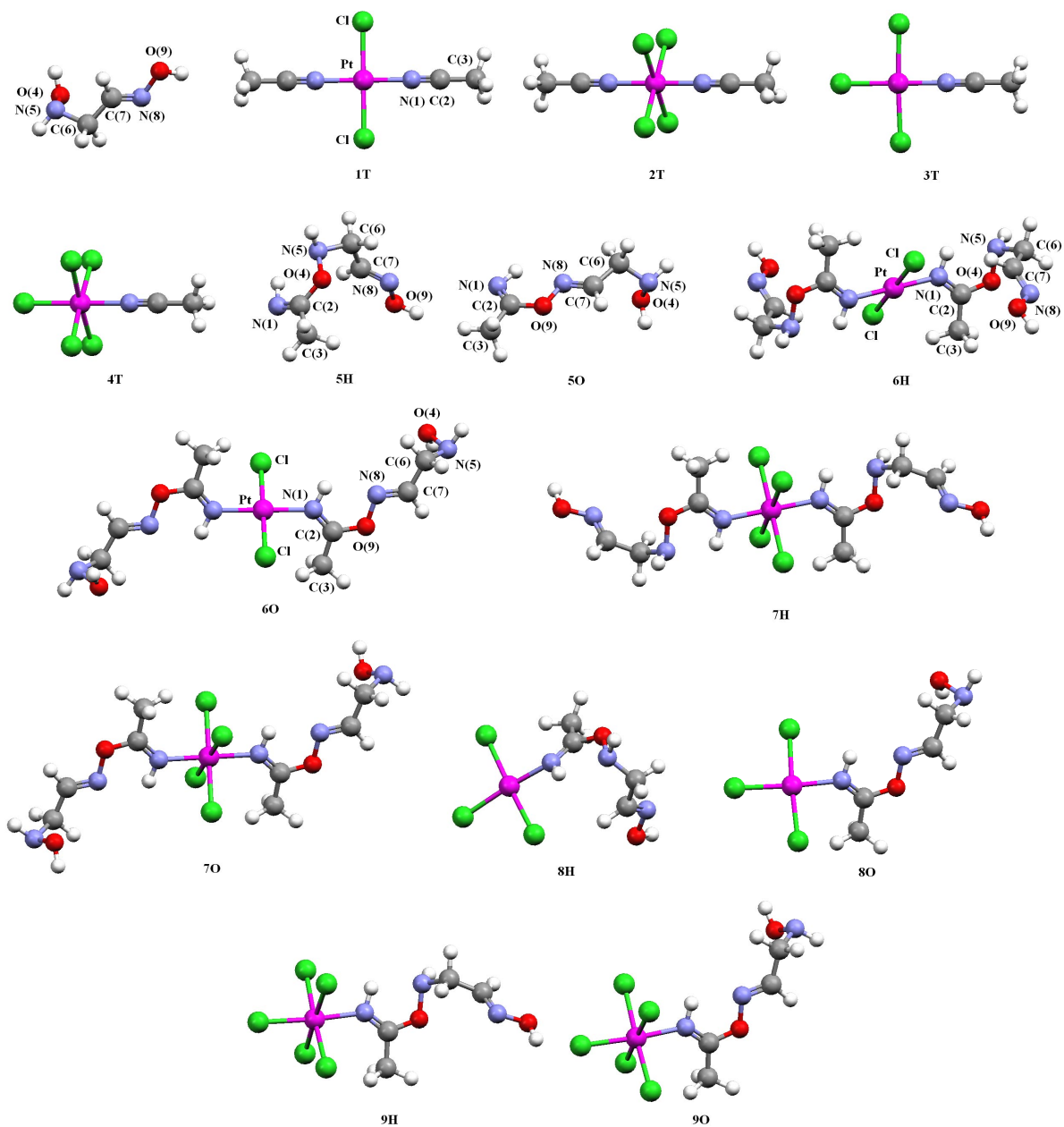


## Supporting Information



**Figure 1ST.** Equilibrium structures of 1,2-hydroxylaminoximes, nitriles 1T-4T and addition products 5H/O-9H/O.

**Table 1ST.** Total energies, E, enthalpies, H, and Gibbs free energies, G (Hartree) of the calculated structures<sup>a</sup>

	E	H	G
HON(H)CMe <sub>2</sub> C(R)=NOH	-339.633748 (-339.641724)	-339.530807	-339.569649 (-339.577625)
CH <sub>3</sub> CN	-132.754928 (-132.757138)	-132.704749	-132.733304 (-132.735514)
<b>1T</b>	-1305.410810 (-1305.415130)	-1305.298316	-1305.358437 (-1305.362757)
<b>2T</b>	-2225.789009 (-2225.791671)	-2225.671032	-2225.736151 (-2225.738813)
<b>3T</b>	-1632.949686 (-1633.009838)	-1632.887178	-1632.939479 (-1632.999631)
<b>4T</b>	-2553.349755 (-2553.403400)	-2553.280864	-2553.341600 (-2553.395245)
<b>5H</b>	-472.412082 (-472.419917)	-472.255471	-472.303290 (-472.311125)
<b>6H</b>	-1984.765928 (-1984.776732)	-1984.439219	-1984.530979 (-1984.541783)
<b>7H</b>	-2905.164262 (-2905.175074)	-2904.833086	-2904.928218 (-2904.939030)
<b>8H</b>	-1972.621445 (-1972.685410)	-1972.452071	-1972.519907 (-1972.583872)
<b>9H</b>	-2893.032292 (-2893.091525)	-2892.856544	-2892.932968 (-2892.992201)
<b>5O</b>	-472.409346 (-472.416949)	-472.253005	-472.301228 (-472.308831)
<b>6O</b>	-1984.756047 (-1984.766359)	-1984.430093	-1984.524413 (-1984.534725)
<b>7O</b>	-2905.155006 (-2905.164404)	-2904.822500	-2904.922589 (-2904.931987)
<b>8O</b>	-1972.615143 (-1972.680321)	-1972.446075	-1972.515982 (-1972.581160)
<b>9O</b>	-2893.026838 (-2893.085040)	-2892.851341	-2892.927750 (-2892.985952)

<sup>a</sup> Values corrected on the solvent effect in parentheses.

**Table 2ST.** Selected calculated bond lengths (Å) of the structures **5H/O–9H/O**.

	<b>5H</b>	<b>6H</b>	<b>7H</b>	<b>8H</b>	<b>9H</b>
PtCl		2.379	2.391	2.344–2.405	2.398–2.401
PtN		2.037	2.047	2.051	2.087
N(1)C(2)	1.264	1.280	1.281	1.275	1.274
C(2)C(3)	1.502	1.492	1.491	1.491	1.491
C(2)O(4)	1.393	1.364	1.358	1.383	1.374
O(4)N(5)	1.441	1.450	1.452	1.444	1.444
N(5)C(6)	1.470	1.475	1.474	1.471	1.468
C(6)C(7)	1.500	1.501	1.503	1.503	1.505
C(7)N(8)	1.276	1.277	1.276	1.277	1.275
N(8)O(9)	1.401	1.397	1.397	1.403	1.406
N(1)–H	1.025	1.022	1.023	1.023	1.022
N(1)•••N(5)	2.739	2.633	2.612	2.641	2.629
N(1)H•••N(5)	2.222	2.102	2.088	2.116	2.130
	<b>5O</b>	<b>6O</b>	<b>7O</b>	<b>8O</b>	<b>9O</b>
PtCl		2.375	2.392	2.343–2.391	2.397–2.401
PtN		2.037	2.050	2.050	2.090
N(1)C(2)	1.262	1.279	1.282	1.274	1.273
C(2)C(3)	1.501	1.494	1.491	1.492	1.491
C(2)O(9)	1.397	1.362	1.356	1.387	1.376
O(9)N(8)	1.408	1.424	1.430	1.406	1.414
N(8)C(7)	1.274	1.273	1.272	1.273	1.272
C(7)C(6)	1.501	1.501	1.507	1.500	1.506
C(6)N(5)	1.466	1.464	1.464	1.469	1.468
N(5)O(4)	1.444	1.443	1.442	1.444	1.444
N(1)–H	1.024	1.019	1.020	1.021	1.020
N(1)•••N(8)	2.721	2.641	2.612	2.660	2.631
N(1)H•••N(8)	2.231	2.166	2.124	2.191	2.166

**Table 3ST.** Cartesian coordinates of the calculated structures

HON(H)CMe <sub>2</sub> C(R)=NOH				CH <sub>3</sub> CN			
O	-1.926275	-1.092480	0.397546	N	1.440808	-0.000624	0.001078
O	1.165829	1.809594	-1.600522	C	0.280530	-0.000250	0.000359
H	1.460842	1.662020	-2.512773	C	-1.180996	0.000590	-0.000970
N	-0.948007	-0.841863	1.431024	H	-1.560597	-0.660828	-0.786109
H	-0.995083	-1.689942	1.997329	H	-1.560201	1.011275	-0.181799
N	1.000817	0.497561	-1.123924	H	-1.562065	-0.348123	0.964032
H	-2.491424	-0.305821	0.450138				
C	0.372435	-0.809071	0.790314				
H	1.101843	-0.900178	1.609606				
H	0.531843	-1.638231	0.087644				
C	0.582027	0.495677	0.080337				
H	0.379101	1.425712	0.618258				
		<b>1T</b>				<b>2T</b>	
Pt	0.000000	-0.000123	0.000406	Pt	0.000000	0.000231	0.000179
Cl	0.000580	-2.369298	-0.000372	Cl	-0.001522	1.676364	-1.709359
N	1.963687	0.000371	0.000128	N	-1.975453	-0.000387	0.000622
C	3.115923	0.000713	-0.000400	C	-3.123545	-0.000813	0.000289
C	4.571627	0.001012	-0.001937	C	-4.577669	-0.001380	-0.000271
Cl	-0.000581	2.369216	0.000648	Cl	0.001532	-1.675741	1.709911
N	-1.963687	-0.000448	0.000370	N	1.975453	0.000373	-0.000611
C	-3.115922	-0.000225	-0.000422	C	3.123545	-0.000081	-0.000911
C	-4.571627	0.000147	-0.001929	C	4.577669	-0.000787	-0.001311
H	-4.942763	-0.730046	-0.727820	Cl	0.000322	1.709829	1.676164
H	-4.942380	0.994205	-0.270334	Cl	-0.000327	-1.709443	-1.675941
H	-4.944984	-0.264581	0.992321	H	4.943668	-0.465940	-0.921681
H	4.942459	0.994867	-0.270978	H	4.944091	-0.565539	0.861359
H	4.942669	-0.729676	-0.727380	H	4.944766	1.028448	0.056104
H	4.944998	-0.263121	0.992466	H	-4.943578	-0.870373	-0.555583
		<b>3T</b>		H	-4.944315	0.913641	-0.475362
Pt	-0.246183	0.000305	-0.000162	H	-4.944636	-0.047845	1.029561
N	1.711235	0.000794	0.000926				
C	2.868338	-0.000056	0.001791				
C	4.325232	-0.001921	0.002791				
Cl	-2.577802	-0.001024	-0.001015				
H	4.707875	0.262305	0.994792				
H	4.706745	0.724589	-0.722788				
H	4.701119	-0.995371	-0.263942				
Cl	-0.181826	-2.388868	-0.000298				
Cl	-0.184699	2.389361	-0.000417				
		<b>5H</b>				<b>4T</b>	
O	-1.000657	-0.080791	1.022292	Pt	-0.220363	-0.001358	0.003189
O	2.772924	0.975285	-1.525583	Cl	-0.181076	-1.698608	-1.695075
H	3.536594	1.396067	-1.100029	N	1.818063	0.010944	-0.029295
N	-1.048801	-2.239961	0.016035	C	2.968024	0.018023	-0.046145
H	-1.466111	-1.707368	-0.754234	C	4.423820	0.026977	-0.067067
N	-1.553633	0.443063	-0.200880	Cl	-0.145505	1.696816	1.699548
H	-2.445694	0.831170	0.108039	Cl	-2.541228	-0.015304	0.041249
N	1.693462	1.523185	-0.820041	H	4.796507	0.920587	0.442923
C	-0.779549	-1.455513	0.969481	H	4.780026	0.029750	-1.101767
C	-0.155165	-1.888509	2.264637	H	4.807434	-0.862571	0.441912
H	-0.803817	-1.632417	3.109752	Cl	-0.124172	-1.698479	1.699593
H	0.006062	-2.966607	2.239301	Cl	-0.200557	1.696252	-1.695166
H	0.801022	-1.375860	2.417100				
C	-0.690470	1.554881	-0.623949				
H	-1.274499	2.096661	-1.382493				
H	-0.454060	2.248457	0.193478				
C	0.583354	1.050743	-1.234121				
						<b>5O</b>	
				O	-1.664934	2.531849	-1.502382
				O	1.066601	-0.894289	0.180364
				N	-0.177352	-2.924913	0.306218
				H	-0.957515	-2.281512	0.464439
				N	-1.105083	3.070314	-0.284831
				H	-1.810958	3.743597	0.016342
				N	-0.137554	-0.206921	0.426637
				C	0.897334	-2.281176	0.150740
				C	2.232127	-2.918428	-0.103781
				H	2.944837	-2.646221	0.682737
				H	2.109447	-4.001570	-0.128525
				H	2.647372	-2.573208	-1.057244
				C	-1.080976	1.984044	0.699080
				H	-0.916461	2.464726	1.675228
				H	-2.020272	1.416549	0.743740
				C	0.060201	1.051410	0.416664
				H	1.046638	1.478589	0.220055

H	0.536154	0.300325	-2.026677	H	-0.968610	2.714104	-2.153015
		<b>6H</b>				<b>6O</b>	
Pt	0.000026	-0.000007	0.000049	Pt	0.000000	0.000000	0.000000
Cl	-0.299251	1.660021	-1.677667	Cl	-0.326883	0.331705	-2.328876
Cl	0.299355	-1.660043	1.677743	Cl	0.326883	-0.331705	2.328876
O	4.269628	0.039388	-0.559962	O	-1.140178	5.949509	4.683023
O	-4.269625	-0.039405	0.559874	O	1.140178	-5.949509	-4.683023
O	3.595600	-4.437242	0.054262	O	0.103934	4.267860	0.477485
O	-3.595866	4.437417	-0.054436	O	-0.103934	-4.267860	-0.477485
H	3.950457	-5.039480	-0.618722	N	-0.272715	1.974819	0.417485
H	-3.950803	5.039672	0.618492	N	0.272715	-1.974819	-0.417485
N	2.031152	0.154869	0.023268	H	-1.008997	2.178482	1.092337
N	-2.031106	-0.154847	-0.023216	H	1.008997	-2.178482	-1.092337
H	2.426943	0.141449	0.965862	N	-1.861691	6.757369	3.729383
H	-2.426834	-0.141318	-0.965837	N	1.861691	-6.757369	-3.729383
N	4.516094	-0.067356	0.864822	H	-2.683936	7.061636	4.252566
N	-4.515994	0.067403	-0.864918	H	2.683936	-7.061636	-4.252566
H	5.187308	0.685850	1.016137	N	-1.004728	4.327175	1.368460
H	-5.187144	-0.685843	-1.016313	N	1.004728	-4.327175	-1.368460
N	4.555926	-3.424061	0.094555	C	0.387737	3.006406	0.048196
N	-4.556112	3.424161	-0.094714	C	-0.387737	-3.006406	-0.048196
C	2.942937	0.084646	-0.872360	C	1.573205	2.993768	-0.860383
C	-2.942952	-0.084721	0.872356	C	-1.573205	-2.993768	0.860383
C	2.736528	-0.001084	-2.347203	H	1.715268	3.979324	-1.309551
C	-2.736623	0.000875	2.347219	H	-1.715268	-3.979324	1.309551
H	3.510796	0.572245	-2.864802	H	1.429815	2.237488	-1.634330
H	-3.511073	-0.572272	2.864744	H	-1.429815	-2.237488	1.634330
H	1.747869	0.374316	-2.609756	H	2.467433	2.736450	-0.280654
H	-1.748070	-0.374784	2.609809	H	-2.467433	-2.736450	0.280654
H	2.827374	-1.049785	-2.654616	C	-2.320195	5.857777	2.669113
H	-2.827201	1.049587	2.654678	C	2.320195	-5.857777	-2.669113
C	5.185638	-1.361196	1.096406	H	-3.077881	6.414572	2.097962
C	-5.185625	1.361201	-1.096494	H	3.077881	-6.414572	-2.097962
H	5.531172	-1.307437	2.138591	H	-2.776329	4.932777	3.046165
H	-5.531132	1.307410	-2.138687	H	2.776329	-4.932777	-3.046165
H	6.055139	-1.508294	0.443460	C	-1.178778	5.527995	1.752625
H	-6.055151	1.508242	-0.443568	C	1.178778	-5.527995	-1.752625
C	4.232576	-2.507368	0.923019	H	-0.523738	6.337517	1.422838
C	-4.232648	2.507441	-0.923105	H	0.523738	-6.337517	-1.422838
H	3.295896	-2.534885	1.485308	H	-0.283903	6.402435	4.742193
H	-3.295957	2.535015	-1.485373	H	0.283903	-6.402435	-4.742193
		<b>7H</b>				<b>7O</b>	
Pt	0.000000	0.000000	0.000000	Pt	0.000000	0.000000	0.000000
Cl	0.085950	-1.570141	1.802187	Cl	-0.043757	1.590728	-1.786683
Cl	-0.085950	1.570141	-1.802187	Cl	0.043757	-1.590728	1.786683
Cl	0.043284	-1.783891	-1.592056	Cl	0.064850	-1.766326	-1.610450
Cl	-0.043284	1.783891	1.592056	Cl	-0.064850	1.766326	1.610450
O	4.302431	0.296953	-0.090220	O	-6.500207	2.705545	-2.467062
O	-4.302431	-0.296953	0.090220	O	6.500207	-2.705545	2.467062
O	8.047224	0.286477	-2.508324	O	-4.304625	-0.303607	-0.053088
O	-8.047224	-0.286477	2.508324	O	4.304625	0.303607	0.053088
N	2.042988	-0.127841	-0.020638	N	-2.044954	0.143266	-0.012754
N	-2.042988	0.127841	0.020638	N	2.044954	-0.143266	0.012754
N	4.447940	-1.147116	-0.049892	N	-7.056364	3.190909	-1.228585
N	-4.447940	1.147116	0.049892	N	7.056364	-3.190909	1.228585
N	6.747496	-0.225149	-2.490868	N	-4.467246	1.116700	-0.082702
N	-6.747496	0.225149	2.490868	N	4.467246	-1.116700	0.082702
C	3.009436	0.710715	-0.086497	C	-3.008764	-0.702459	-0.030166
C	-3.009436	-0.710715	0.086497	C	3.008764	0.702459	0.030166
C	2.932495	2.197462	-0.160160	C	-2.907841	-2.189840	-0.051243

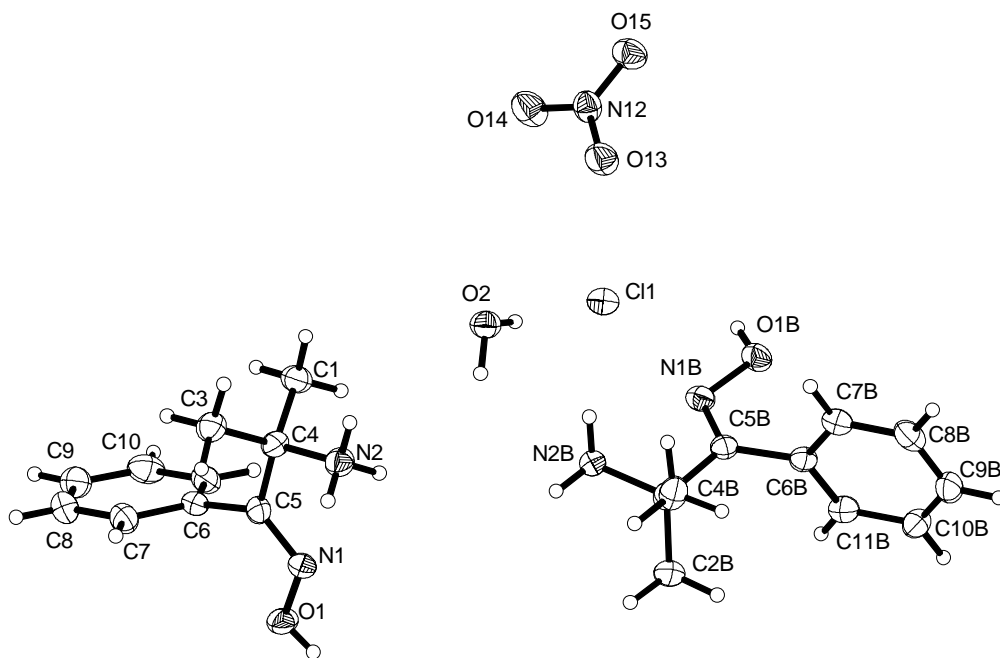
C	-2.932495	-2.197462	0.160160	C	2.907841	2.189840	0.051243
H	3.488107	2.536376	-1.040464	H	-3.767181	-2.615922	0.472805
H	-3.488107	-2.536376	1.040464	H	3.767181	2.615922	-0.472805
H	1.900866	2.534119	-0.216446	H	-1.976305	-2.515671	0.408942
H	-1.900866	-2.534119	0.216446	H	1.976305	2.515671	-0.408942
H	3.412339	2.620758	0.728616	H	-2.921395	-2.532132	-1.091244
H	-3.412339	-2.620758	-0.728616	H	2.921395	2.532132	1.091244
C	5.186391	-1.558233	-1.257634	C	-6.123693	2.852440	-0.152230
C	-5.186391	1.558233	1.257634	C	6.123693	-2.852440	0.152230
H	4.555500	-1.359592	-2.127119	H	-5.236234	3.484954	-0.236666
H	-4.555500	1.359592	2.127119	H	5.236234	-3.484954	0.236666
H	5.286960	-2.647230	-1.154709	H	-6.632588	3.104350	0.788947
H	-5.286960	2.647230	1.154709	H	6.632588	-3.104350	-0.788947
C	6.532193	-0.915392	-1.439721	C	-5.705754	1.404844	-0.121962
C	-6.532193	0.915392	1.439721	C	5.705754	-1.404844	0.121962
H	7.306628	-1.047475	-0.677813	H	-6.468292	0.621724	-0.141664
H	-7.306628	1.047475	0.677813	H	6.468292	-0.621724	0.141664
H	2.362243	-1.098794	0.032333	H	-2.344566	1.118605	-0.023574
H	-2.362243	1.098794	-0.032333	H	2.344566	-1.118605	0.023574
H	8.069943	0.779806	-3.344199	H	-7.905974	2.633596	-1.123238
H	-8.069943	-0.779806	3.344199	H	7.905974	-2.633596	1.123238
H	5.032411	-1.271969	0.778621	H	-6.359522	3.523164	-2.971260
H	-5.032411	1.271969	-0.778621	H	6.359522	-3.523164	2.971260
		<b>8H</b>				<b>8O</b>	
Pt	-1.112638	0.415487	0.297295	Pt	-1.505889	0.236159	-0.195612
Cl	-1.145967	2.797452	0.354173	Cl	-1.246746	-1.508609	1.417453
Cl	-0.958227	-1.983408	0.363567	Cl	-1.631889	1.918418	-1.890329
O	3.228237	0.347300	0.356653	O	5.107846	-2.556126	2.265866
O	2.166994	-2.740601	-2.924836	O	2.793611	0.860390	-0.047275
H	2.597158	-2.622810	-3.785824	Cl	-3.843303	0.124426	-0.080999
N	0.911058	0.304184	0.609168	N	0.544117	0.232205	-0.214985
Cl	-3.428542	0.355933	-0.061228	H	0.914584	-0.717425	-0.163927
H	1.133638	-0.517214	1.176286	N	5.865876	-2.297649	1.064166
N	3.216461	-0.882439	1.113217	H	6.326802	-3.192838	0.898492
H	3.902952	-0.690338	1.841833	N	3.094478	-0.512429	-0.094227
N	3.171495	-2.341879	-2.030599	C	1.437034	1.136719	-0.130178
C	1.957612	0.834887	0.110444	C	1.203133	2.607593	-0.050032
C	2.010895	1.993005	-0.827387	H	1.975601	3.144481	-0.609580
H	2.835730	2.659749	-0.554363	H	0.215159	2.833615	-0.454986
H	1.060262	2.528352	-0.792309	H	1.253713	2.925695	0.999129
H	2.194820	1.623975	-1.844105	C	4.907158	-2.085940	-0.028462
C	3.726696	-1.954085	0.243576	H	5.482592	-2.196428	-0.960406
H	3.874245	-2.809469	0.019551	H	4.087749	-2.816128	-0.032715
H	4.690012	-1.704652	-0.222487	C	4.348094	-0.695197	0.035485
C	2.738407	-2.315011	-0.829154	H	5.038298	0.140108	0.180094
H	1.696860	-2.530634	-0.570187	H	5.322313	-1.791535	2.823198
		<b>9H</b>				<b>9O</b>	
Pt	-1.320258	0.027816	0.293878	Pt	-1.282158	0.298175	-0.164523
Cl	-1.123065	-1.569150	2.072154	Cl	-1.231019	1.923010	-1.932112
Cl	-1.417487	1.604751	-1.514018	Cl	-1.238250	-1.346129	1.578970
Cl	-1.333013	-1.771892	-1.293309	Cl	-1.177257	-1.458783	-1.794660
Cl	-1.200876	1.807605	1.897298	Cl	-1.281364	2.032787	1.490514
O	3.037139	0.283749	0.064966	O	5.339393	-2.479307	2.352890
O	6.899471	0.194867	-2.262649	O	3.084829	0.557581	-0.038847
N	0.757919	-0.118373	0.173645	Cl	-3.626081	0.301427	-0.203084
Cl	-3.661112	0.020405	0.441647	N	0.801967	0.142792	-0.122010
N	3.172223	-1.154283	0.084173	N	5.820181	-2.983694	1.087945
N	5.579267	-0.285366	-2.308493	N	3.235821	-0.847482	0.003270
C	1.729296	0.702571	0.106616	C	1.772139	0.966988	-0.087952
C	1.647062	2.191272	0.082619	C	1.687813	2.455447	-0.077305

H	2.576185	2.605988	-0.316351	H	2.594596	2.876609	-0.520395
H	0.787523	2.492333	-0.520514	H	0.799716	2.773941	-0.625262
H	1.477754	2.556643	1.099607	H	1.591499	2.801388	0.956501
C	3.921245	-1.552148	-1.114248	C	4.852635	-2.616065	0.047408
H	3.313257	-1.318251	-1.991147	H	3.951266	-3.222768	0.168669
H	4.002435	-2.645663	-1.042520	H	5.319251	-2.894693	-0.908830
C	5.287072	-0.936323	-1.252028	C	4.468850	-1.160273	0.019391
H	6.015608	-1.055641	-0.443176	H	5.249705	-0.394013	0.011811
H	1.045679	-1.098188	0.198649	H	1.071738	-0.840407	-0.098527
H	6.965345	0.688794	-3.095017	H	6.673326	-2.439838	0.948254
H	3.733934	-1.309897	0.922315	H	5.086583	-3.291253	2.820841

**Table 4SX.** Crystal data and structure refinement for **10** ( $[\text{C}_{10}\text{H}_{15}\text{N}_2\text{O}]_2[\text{NO}_3][\text{Cl}]\cdot(\text{H}_2\text{O})$ )

	<b>10</b>		
Identification code	<b>10</b>		
Empirical formula	$\text{C}_{10}\text{H}_{16}\text{Cl}_{0.50}\text{N}_{2.50}\text{O}_3$		
Formula weight	236.98		
Temperature	120(2) K		
Wavelength	0.71073 Å		
Crystal system	Orthorhombic		
Space group	Pbca		
Unit cell dimensions	a = 23.9451(11) Å	$\alpha = 90^\circ$	
	b = 7.4305(6) Å	$\beta = 90^\circ$	
	c = 27.368(2) Å	$\gamma = 90^\circ$	
Volume	4869.5(6) Å <sup>3</sup>		
Z	16		
Density (calculated)	1.293 Mg/m <sup>3</sup>		
Absorption coefficient	0.201 mm <sup>-1</sup>		
F(000)	2016		
Crystal size	0.22 x 0.15 x 0.07 mm <sup>3</sup>		
Theta range for data collection	3.92 to 25.00°.		
Index ranges	-25 ≤ h ≤ 28, -8 ≤ k ≤ 8, -26 ≤ l ≤ 32		
Reflections collected	15142		
Independent reflections	3640 [R(int) = 0.1289]		
Completeness to theta = 25.00°	84.9 %		
Absorption correction	Semi-empirical from equivalents		
Max. and min. transmission	0.9855 and 0.9572		
Refinement method	Full-matrix least-squares on F <sup>2</sup>		
Data / restraints / parameters	3640 / 0 / 295		
Goodness-of-fit on F <sup>2</sup>	1.047		
Final R indices [I > 2σ(I)]	R1 = 0.0558, wR2 = 0.1164		
R indices (all data)	R1 = 0.0970, wR2 = 0.1357		
Largest diff. peak and hole	0.426 and -0.221 e.Å <sup>-3</sup>		





**Figure 2SX.** Thermal ellipsoid view of complex **10** ( $[\text{C}_{10}\text{H}_{15}\text{N}_2\text{O}]_2[\text{NO}_3][\text{Cl}]\cdot(\text{H}_2\text{O})$ ) with atomic numbering scheme. Thermal ellipsoids are drawn with 50% probability.