

Supporting Information

for

Excited-State Structural Dynamics of Cytosine
from Resonance Raman Spectroscopy

*Brant E. Billinghamurst and Glen R. Loppnow**

Department of Chemistry,

University of Alberta,

Edmonton, Alberta, T6G 2G2, Canada.

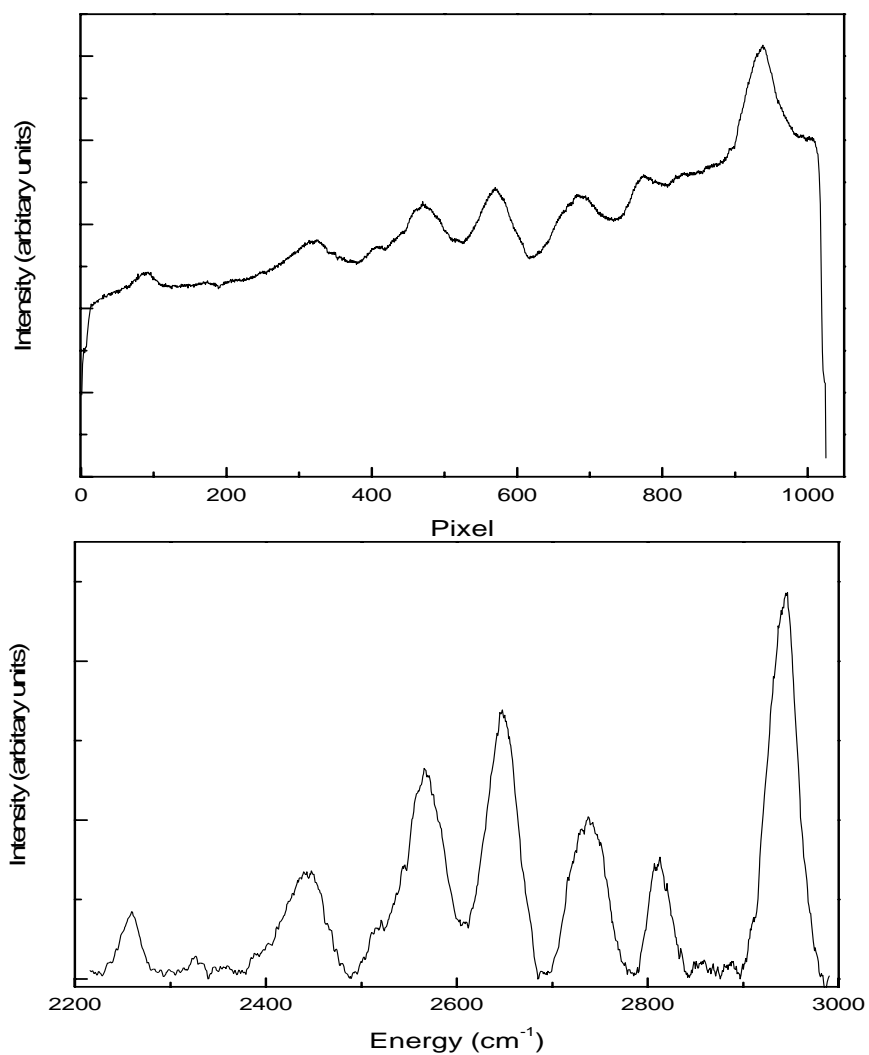


Figure 1S. Top: raw resonance Raman spectrum of the 2200-3000 cm^{-1} region of cytosine. Bottom: same as top spectrum, after diode array adjustment, $\tilde{\nu}$ calibration, and baseline correction.