

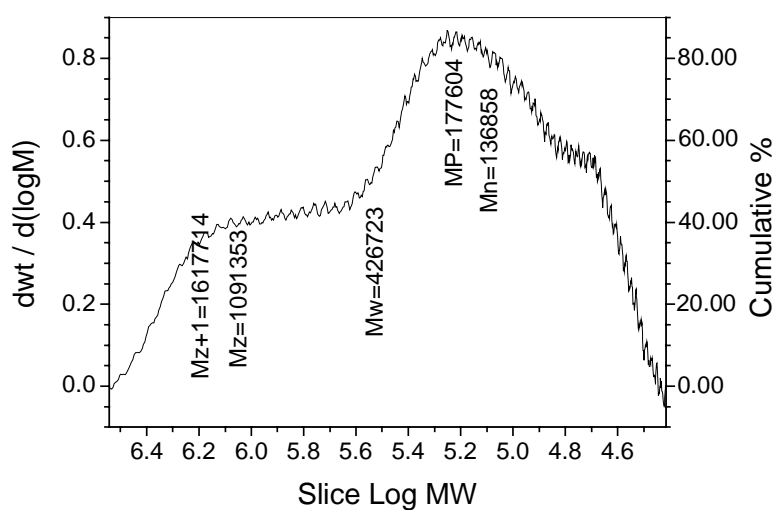
# Supporting Information

for

Inter-locked Bis(polyrotaxane) of Cyclodextrin-Porphyrin Systems

Mediated by Fullerenes

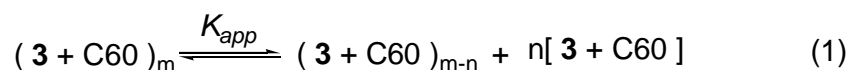
*Yu Liu, \* Peng Liang, Yong Chen, Ying-Ming Zhang, Jian-Yu Zheng, and Hai Yue*



Dist Name	Mn	Mw	MP	Mz	Mz+1	Polydispersity
1	136858	428723	177604	1091353	1617714	3.132614

Figure S1 GPC trace of assembly 3 in DMF elution vs. polystyrene standards.

The apparent association constant of the supramolecular complex between cyclodextrin-porphyrin conjugate **3** and fullerene was determined by investigating the fluorescence spectrum of **3** by adding fullerene.<sup>1</sup>



The observed fluorescence quantum yield ( $\phi_f(\text{obsd})$ ) of porphyrin units in **3** was related to the fluorescence quantum yields of uncomplexed ( $\phi_f^0$ ) and complexed ( $\phi_f'$ ) porphyrin units by the equation (2).

$$\phi_f(\text{obsd}) = (1 - \alpha)\phi_f^0 + \alpha\phi_f' \quad (2)$$

$\alpha$  was the degree of association between porphyrin and fullerene.

Simplifying the equation (2), we get the following equation (3).

$$\phi_f^0 - \phi_f(\text{obsd}) = \alpha(\phi_f^0 - \phi_f') \quad (3)$$

For high concentration of C60 cluster and  $[\text{C60}] \gg$  porphyrin,  $\alpha$  was given as the following form.

$$\alpha = \frac{K_{app}[\text{C60}]}{1 - K_{app}[\text{C60}]} \quad (4)$$

From equation (3) and (4), the following relation was obtained.

$$\frac{1}{\phi_f^0 - \phi_f(\text{obsd})} = \frac{1}{\phi_f^0 - \phi_f'} + \frac{1}{K_{app}(\phi_f^0 - \phi_f')[\text{C60}]} \quad (5)$$

Using the equation (5), we obtained a linear dependence of  $1/(\phi_f^0 - \phi_f(\text{obsd}))$  on the concentration of C60 clusters. Therefore, we calculated the  $K_{app}$  to be  $7800 \text{ M}^{-1}$ .

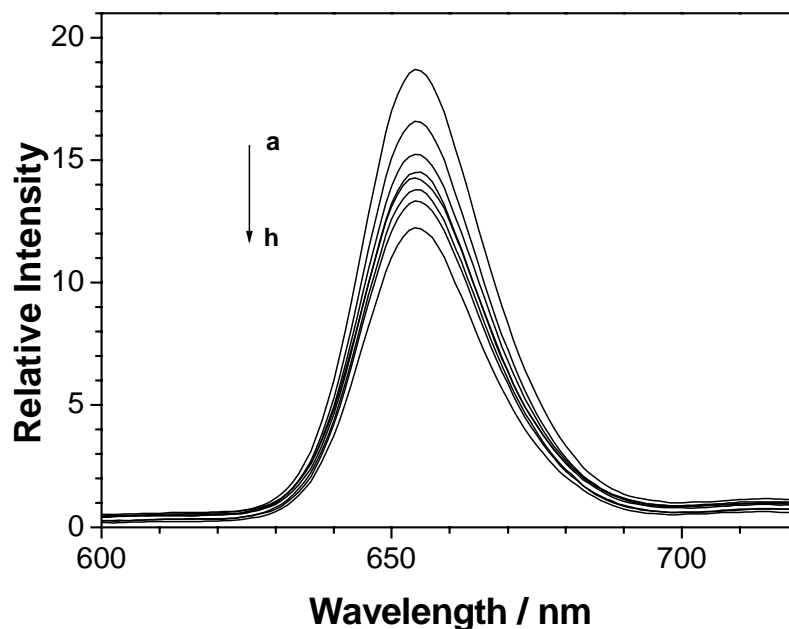


Figure S2. Fluorescence emission spectra of **3** (0.02 mM based on the number of the porphyrins) in DMF/toluene (v/v 3:1) at various concentrations of C60 at 298 K. ([C60]=0, 0.05, 0.1, 0.15, 0.2, 0.25, 0.3, 0.4 mM, excitation wavelength 410 nm, excitation and emission slit 5 nm)

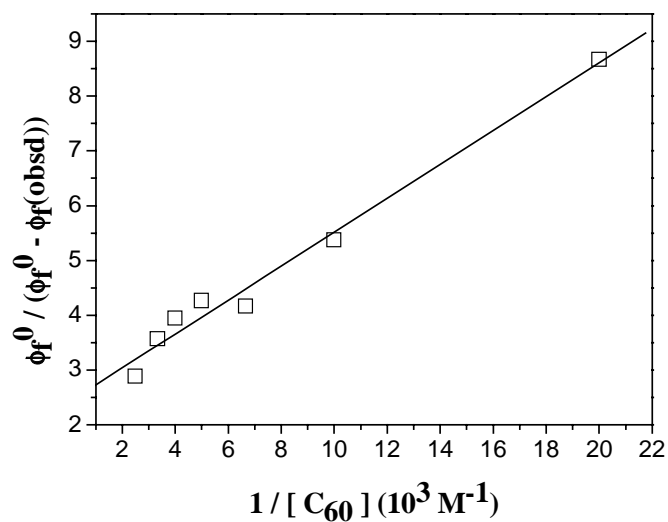


Figure S3. Dependence of  $\phi_f^0 / (\phi_f^0 - \phi_f(\text{obsd}))$  on the reciprocal of C60 in DMF/toluene (v/v 3:1). ( $\phi_f^0$  is the initial fluorescence yield of **3**;  $\phi_f(\text{obsd})$  is the observed

fluorescence quantum yield of **3** in the presence of C60 with various concentration.)

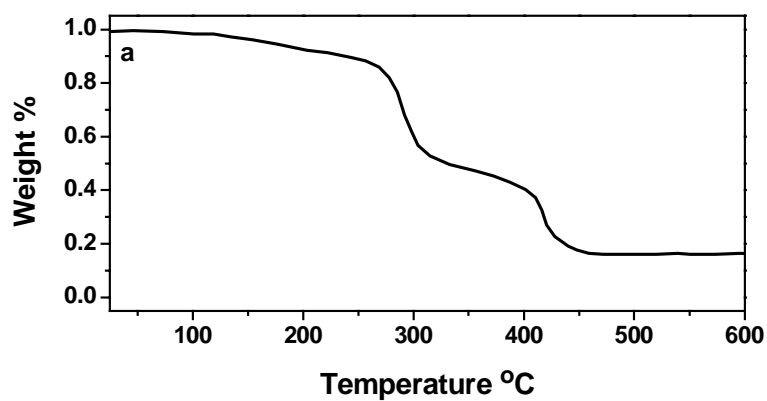


Figure S4. The thermogravimetric curve of **4**.

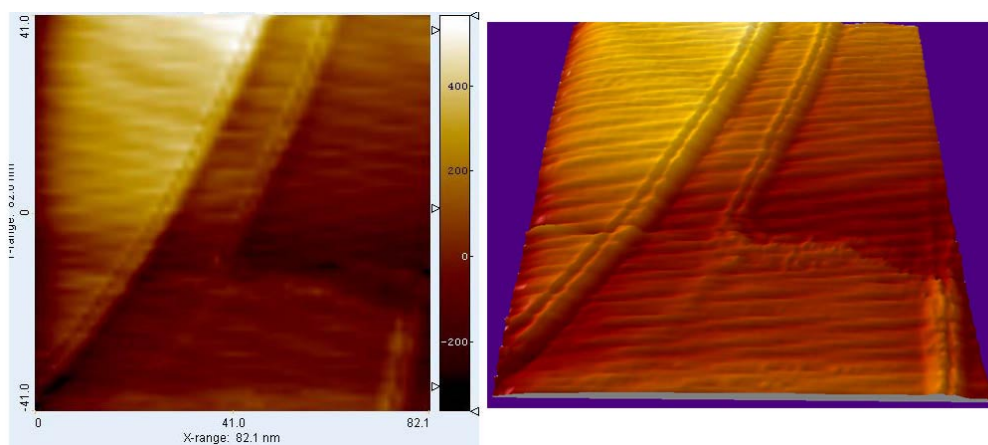


Figure S5 STM image of the end of **4** on HOPG surface (tunneling current 1.0 nA)

<sup>1</sup> Hasobe, T.; Imahori, H.; Kamat, P. V.; Ahn, T. K.; Kim, S. K.; Kim, D.; Fujimoto, A.; Hirakawa T.; Fukuzumi, S. *J. Am. Chem. Soc.* **2005**, *127*, 1216-1228.