

## Supporting Information

# Synthesis of 5-Substituted-1*H*-Indol-2-yl-1*H*-Quinolin-2-Ones: A Novel Class of KDR Kinase Inhibitors

Jeffrey T. Kuethe,\* Audrey Wong, Chuanxing Qu, Jacqueline Smitrovich, Ian W. Davies,  
and David L. Hughes

Department of Process Research, Merck & Co., Inc., P.O. Box 2000, Rahway, NJ 07065

[Jeffrey.Kuethe@merck.com](mailto:Jeffrey.Kuethe@merck.com)

### Table of Contents

NMR Spectra Compound **38-40**, **47-48**.....1-7

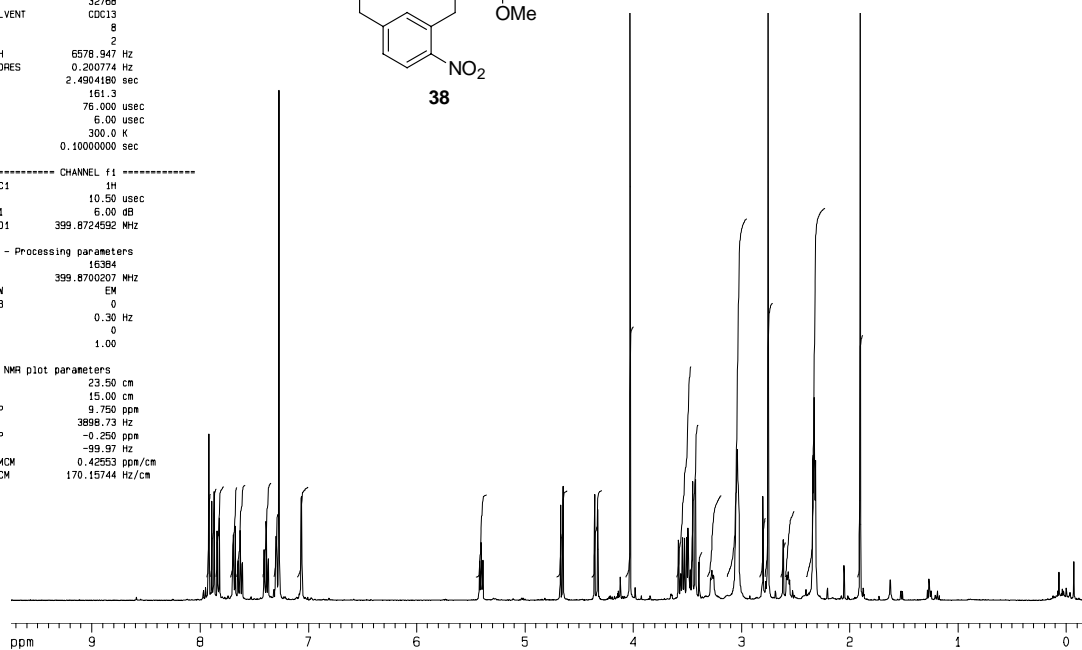
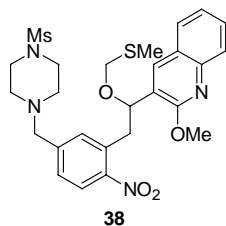
Current Data Parameters  
NAME 73980-145e  
EXPNO 1  
PROCNO 1

F2 - Acquisition Parameters  
Date\_ 20030212  
Time 16.34  
INSTRUM spect  
PROBHD 5 mm QNP 1H  
PULPROG zg30  
TD 32768  
SOLVENT CDCl3  
NS 8  
DS 2  
SWH 6578.947 Hz  
FIDRES 0.200774 Hz  
AQ 2.4904180 sec  
RG 161.3  
DM 76.000 usec  
DE 6.00 usec  
TE 300.0 K  
D1 0.1000000 sec

----- CHANNEL f1 -----  
NUC1 1H  
P1 10.50 usec  
PL1 6.00 dB  
SFO1 399.8724592 MHz

F2 - Processing parameters  
SI 16384  
SF 399.8700207 MHz  
WDW EM  
SSB 0  
LB 0.30 Hz  
GB 0  
PC 1.00

ID NMR plot parameters  
CX 23.50 cm  
CY 15.00 cm  
F1P 9.750 ppm  
F1 3898.73 Hz  
F2P -0.250 ppm  
F2 -99.97 Hz  
PPHMC 0.42553 ppm/cm  
HZCM 170.15744 Hz/cm



Current Data Parameters  
NAME 66960-178c  
EXPNO 1  
PROCNO 1

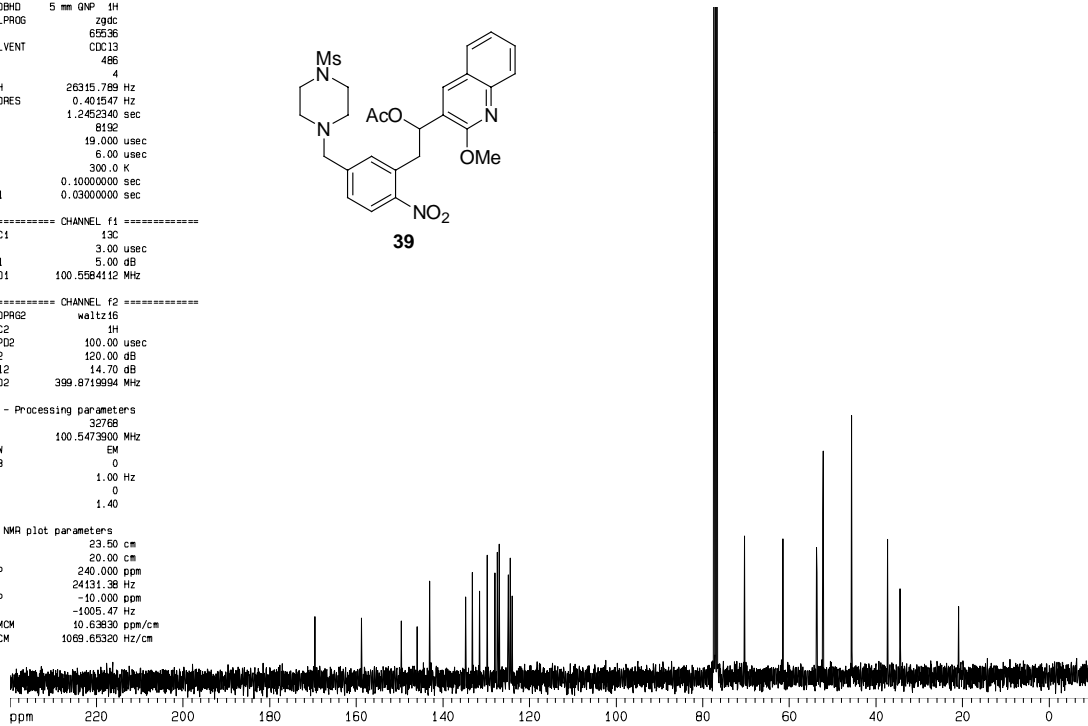
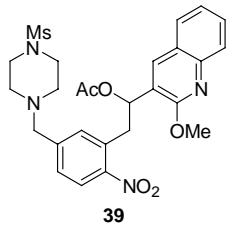
F2 - Acquisition Parameters  
Date\_ 20030529  
Time 18.01  
INSTRUM spect  
PROBHD 5 mm QNP 1H  
PULPROG zgpg  
TD 65536  
SOLVENT CDCl3  
NS 486  
DS 4  
SWH 26315.789 Hz  
FIDRES 0.404547 Hz  
AQ 1.2452340 sec  
RG 8192  
DW 19.000 usec  
DE 6.00 usec  
TE 300.0 K  
D1 0.10000000 sec  
d11 0.03000000 sec

===== CHANNEL f1 =====  
NUC1 13C  
P1 3.00 usec  
PL1 5.00 dB  
SFO1 100.5584112 MHz

===== CHANNEL f2 =====  
CPDPRG2 waltz16  
NUC2 1H  
PCPD2 100.00 usec  
PL2 120.00 dB  
PL12 14.70 dB  
SFO2 399.8719894 MHz

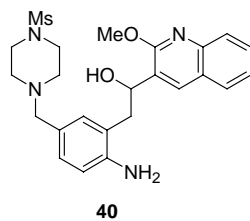
F2 - Processing parameters  
SI 32768  
SF 100.5473900 MHz  
WDW EM  
SSB 0  
LB 1.00 Hz  
SB 0  
PC 1.40

1D NMR plot parameters  
CX 23.50 cm  
CY 20.00 cm  
F1P 240.000 ppm  
F1 24131.38 Hz  
F2P -10.000 ppm  
F2 -1005.47 Hz  
PPMCH 10.63830 ppm/cm  
HZCM 1069.65320 Hz/cm



Current Data Parameters  
NAME 66660-019f  
EXPNO 2  
PROCNO 1

F2 - Acquisition Parameters  
Date\_ 20030603  
Time 17.02  
INSTRUM spect  
PROBHD 5 mm QNP 1H  
PULPROG zgdc  
TD 65536  
SOLVENT CDCl3  
NS 331  
DS 4  
SWH 26315.789 Hz  
FIDRES 0.401547 Hz  
AQ 1.2452340 sec  
RG 8196  
DM 19.000 usec  
DE 6.00 usec  
TE 300.0 K  
D1 0.1000000 sec  
d11 0.0300000 sec

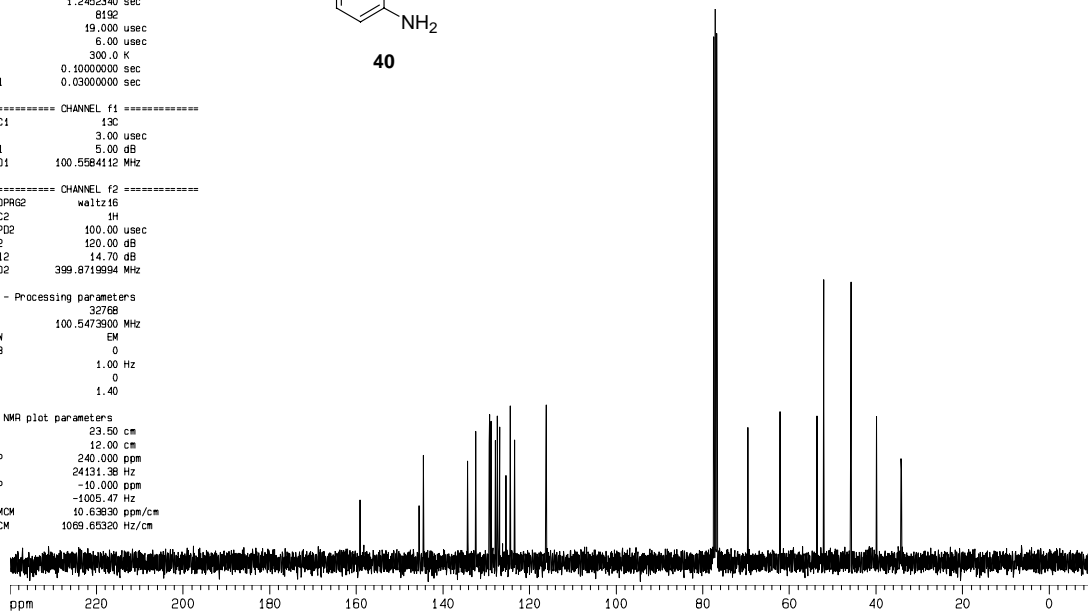


----- CHANNEL f1 -----  
NUC1 13C  
P1 3.00 usec  
PL1 5.00 dB  
SFO1 100.5584112 MHz

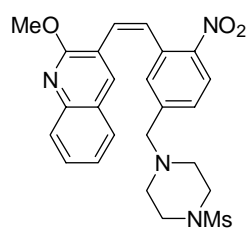
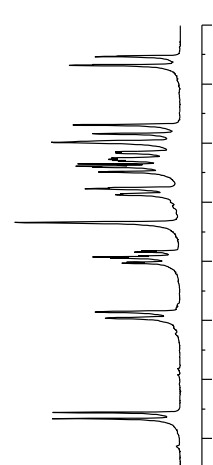
----- CHANNEL f2 -----  
CPOPRG2 waltz16  
NUC2 1H  
PCPD2 100.00 usec  
PL2 120.00 dB  
PL12 14.70 dB  
SFO2 399.8719994 MHz

F2 - Processing parameters  
SI 32768  
SF 100.5473900 MHz  
WDW EM  
SSB 0  
LB 1.00 Hz  
SB 0  
PC 1.40

1D NMR plot parameters  
CX 23.50 cm  
CY 12.00 cm  
F1P 240.000 ppm  
F1 24131.38 Hz  
F2P -10.000 ppm  
F2 -1005.47 Hz  
PPMCH 10.63830 ppm/cm  
HZCM 1069.65320 HZ/cm



1H NMR (400 MHz, CDCl3)  $\delta$  7.80 (d, 1H), 7.75 (d, 1H), 7.60 (d, 1H), 7.55 (d, 1H), 7.40 (d, 1H), 7.35 (d, 1H), 7.25 (d, 1H), 7.15 (d, 1H), 7.10 (d, 1H), 7.05 (d, 1H), 7.00 (d, 1H), 6.95 (d, 1H), 6.90 (d, 1H), 6.85 (d, 1H), 6.80 (d, 1H), 6.75 (d, 1H), 6.70 (d, 1H), 6.65 (d, 1H), 6.60 (d, 1H), 6.55 (d, 1H), 6.50 (d, 1H), 6.45 (d, 1H), 6.40 (d, 1H), 6.35 (d, 1H), 6.30 (d, 1H), 6.25 (d, 1H), 6.20 (d, 1H), 6.15 (d, 1H), 6.10 (d, 1H), 6.05 (d, 1H), 6.00 (d, 1H), 5.95 (d, 1H), 5.90 (d, 1H), 5.85 (d, 1H), 5.80 (d, 1H), 5.75 (d, 1H), 5.70 (d, 1H), 5.65 (d, 1H), 5.60 (d, 1H), 5.55 (d, 1H), 5.50 (d, 1H), 5.45 (d, 1H), 5.40 (d, 1H), 5.35 (d, 1H), 5.30 (d, 1H), 5.25 (d, 1H), 5.20 (d, 1H), 5.15 (d, 1H), 5.10 (d, 1H), 5.05 (d, 1H), 5.00 (d, 1H), 4.95 (d, 1H), 4.90 (d, 1H), 4.85 (d, 1H), 4.80 (d, 1H), 4.75 (d, 1H), 4.70 (d, 1H), 4.65 (d, 1H), 4.60 (d, 1H), 4.55 (d, 1H), 4.50 (d, 1H), 4.45 (d, 1H), 4.40 (d, 1H), 4.35 (d, 1H), 4.30 (d, 1H), 4.25 (d, 1H), 4.20 (d, 1H), 4.15 (d, 1H), 4.10 (d, 1H), 4.05 (d, 1H), 4.00 (d, 1H), 3.95 (d, 1H), 3.90 (d, 1H), 3.85 (d, 1H), 3.80 (d, 1H), 3.75 (d, 1H), 3.70 (d, 1H), 3.65 (d, 1H), 3.60 (d, 1H), 3.55 (d, 1H), 3.50 (d, 1H), 3.45 (d, 1H), 3.40 (d, 1H), 3.35 (d, 1H), 3.30 (d, 1H), 3.25 (d, 1H), 3.20 (d, 1H), 3.15 (d, 1H), 3.10 (d, 1H), 3.05 (d, 1H), 3.00 (d, 1H), 2.95 (d, 1H), 2.90 (d, 1H), 2.85 (d, 1H), 2.80 (d, 1H), 2.75 (d, 1H), 2.70 (d, 1H), 2.65 (d, 1H), 2.60 (d, 1H), 2.55 (d, 1H), 2.50 (d, 1H), 2.45 (d, 1H), 2.40 (d, 1H), 2.35 (d, 1H), 2.30 (d, 1H), 2.25 (d, 1H), 2.20 (d, 1H), 2.15 (d, 1H), 2.10 (d, 1H), 2.05 (d, 1H), 2.00 (d, 1H), 1.95 (d, 1H), 1.90 (d, 1H), 1.85 (d, 1H), 1.80 (d, 1H), 1.75 (d, 1H), 1.70 (d, 1H), 1.65 (d, 1H), 1.60 (d, 1H), 1.55 (d, 1H), 1.50 (d, 1H), 1.45 (d, 1H), 1.40 (d, 1H), 1.35 (d, 1H), 1.30 (d, 1H), 1.25 (d, 1H), 1.20 (d, 1H), 1.15 (d, 1H), 1.10 (d, 1H), 1.05 (d, 1H), 1.00 (d, 1H), 0.95 (d, 1H), 0.90 (d, 1H), 0.85 (d, 1H), 0.80 (d, 1H), 0.75 (d, 1H), 0.70 (d, 1H), 0.65 (d, 1H), 0.60 (d, 1H), 0.55 (d, 1H), 0.50 (d, 1H), 0.45 (d, 1H), 0.40 (d, 1H), 0.35 (d, 1H), 0.30 (d, 1H), 0.25 (d, 1H), 0.20 (d, 1H), 0.15 (d, 1H), 0.10 (d, 1H), 0.05 (d, 1H), 0.00 (d, 1H).

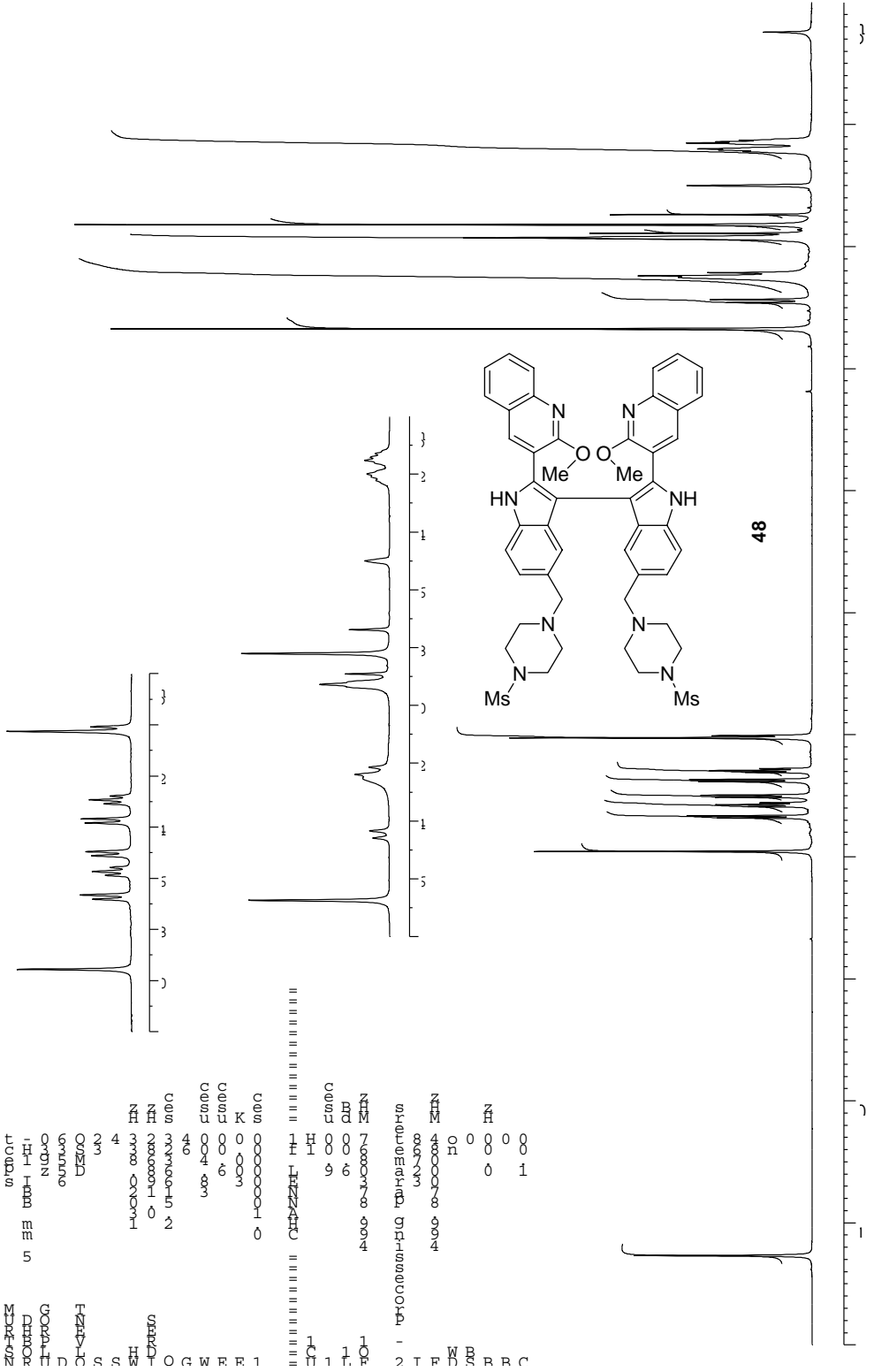


47

Chemical Shift (ppm)	Integration	Assignment
7.80	1.00	H-1
7.75	1.00	H-2
7.60	1.00	H-3
7.55	1.00	H-4
7.40	1.00	H-5
7.35	1.00	H-6
7.25	1.00	H-7
7.15	1.00	H-8
7.10	1.00	H-9
7.05	1.00	H-10
7.00	1.00	H-11
6.95	1.00	H-12
6.90	1.00	H-13
6.85	1.00	H-14
6.80	1.00	H-15
6.75	1.00	H-16
6.70	1.00	H-17
6.65	1.00	H-18
6.60	1.00	H-19
6.55	1.00	H-20
6.50	1.00	H-21
6.45	1.00	H-22
6.40	1.00	H-23
6.35	1.00	H-24
6.30	1.00	H-25
6.25	1.00	H-26
6.20	1.00	H-27
6.15	1.00	H-28
6.10	1.00	H-29
6.05	1.00	H-30
6.00	1.00	H-31
5.95	1.00	H-32
5.90	1.00	H-33
5.85	1.00	H-34
5.80	1.00	H-35
5.75	1.00	H-36
5.70	1.00	H-37
5.65	1.00	H-38
5.60	1.00	H-39
5.55	1.00	H-40
5.50	1.00	H-41
5.45	1.00	H-42
5.40	1.00	H-43
5.35	1.00	H-44
5.30	1.00	H-45
5.25	1.00	H-46
5.20	1.00	H-47
5.15	1.00	H-48
5.10	1.00	H-49
5.05	1.00	H-50
5.00	1.00	H-51
4.95	1.00	H-52
4.90	1.00	H-53
4.85	1.00	H-54
4.80	1.00	H-55
4.75	1.00	H-56
4.70	1.00	H-57
4.65	1.00	H-58
4.60	1.00	H-59
4.55	1.00	H-60
4.50	1.00	H-61
4.45	1.00	H-62
4.40	1.00	H-63
4.35	1.00	H-64
4.30	1.00	H-65
4.25	1.00	H-66
4.20	1.00	H-67
4.15	1.00	H-68
4.10	1.00	H-69
4.05	1.00	H-70
4.00	1.00	H-71
3.95	1.00	H-72
3.90	1.00	H-73
3.85	1.00	H-74
3.80	1.00	H-75
3.75	1.00	H-76
3.70	1.00	H-77
3.65	1.00	H-78
3.60	1.00	H-79
3.55	1.00	H-80
3.50	1.00	H-81
3.45	1.00	H-82
3.40	1.00	H-83
3.35	1.00	H-84
3.30	1.00	H-85
3.25	1.00	H-86
3.20	1.00	H-87
3.15	1.00	H-88
3.10	1.00	H-89
3.05	1.00	H-90
3.00	1.00	H-91
2.95	1.00	H-92
2.90	1.00	H-93
2.85	1.00	H-94
2.80	1.00	H-95
2.75	1.00	H-96
2.70	1.00	H-97
2.65	1.00	H-98
2.60	1.00	H-99
2.55	1.00	H-100
2.50	1.00	H-101
2.45	1.00	H-102
2.40	1.00	H-103
2.35	1.00	H-104
2.30	1.00	H-105
2.25	1.00	H-106
2.20	1.00	H-107
2.15	1.00	H-108
2.10	1.00	H-109
2.05	1.00	H-110
2.00	1.00	H-111
1.95	1.00	H-112
1.90	1.00	H-113
1.85	1.00	H-114
1.80	1.00	H-115
1.75	1.00	H-116
1.70	1.00	H-117
1.65	1.00	H-118
1.60	1.00	H-119
1.55	1.00	H-120
1.50	1.00	H-121
1.45	1.00	H-122
1.40	1.00	H-123
1.35	1.00	H-124
1.30	1.00	H-125
1.25	1.00	H-126
1.20	1.00	H-127
1.15	1.00	H-128
1.10	1.00	H-129
1.05	1.00	H-130
1.00	1.00	H-131
0.95	1.00	H-132
0.90	1.00	H-133
0.85	1.00	H-134
0.80	1.00	H-135
0.75	1.00	H-136
0.70	1.00	H-137
0.65	1.00	H-138
0.60	1.00	H-139
0.55	1.00	H-140
0.50	1.00	H-141
0.45	1.00	H-142
0.40	1.00	H-143
0.35	1.00	H-144
0.30	1.00	H-145
0.25	1.00	H-146
0.20	1.00	H-147
0.15	1.00	H-148
0.10	1.00	H-149
0.05	1.00	H-150
0.00	1.00	H-151



תוצאות ניתוח  
 1H-NMR  
 13C-NMR

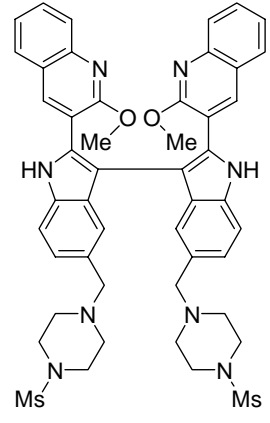


Chemical Shift (ppm)	Assignment
10.0	NH
8.5	H
7.5	H
6.5	H
5.5	H
4.5	H
3.5	H
2.5	Me
1.5	Me
0	TMS

Chemical Shift (ppm)	Assignment
175	C=O
155	C
145	C
135	C
125	C
115	C
105	C
95	C
85	C
75	C
65	C
55	C
45	C
35	C
25	C
15	C
0	TMS

MS  
 4.261  
 4.262  
 4.263  
 4.264  
 4.265  
 4.266  
 4.267  
 4.268  
 4.269  
 4.270  
 4.271  
 4.272  
 4.273  
 4.274  
 4.275  
 4.276  
 4.277  
 4.278  
 4.279  
 4.280  
 4.281  
 4.282  
 4.283  
 4.284  
 4.285  
 4.286  
 4.287  
 4.288  
 4.289  
 4.290  
 4.291  
 4.292  
 4.293  
 4.294  
 4.295  
 4.296  
 4.297  
 4.298  
 4.299  
 4.300  
 4.301  
 4.302  
 4.303  
 4.304  
 4.305  
 4.306  
 4.307  
 4.308  
 4.309  
 4.310  
 4.311  
 4.312  
 4.313  
 4.314  
 4.315  
 4.316  
 4.317  
 4.318  
 4.319  
 4.320  
 4.321  
 4.322  
 4.323  
 4.324  
 4.325  
 4.326  
 4.327  
 4.328  
 4.329  
 4.330  
 4.331  
 4.332  
 4.333  
 4.334  
 4.335  
 4.336  
 4.337  
 4.338  
 4.339  
 4.340  
 4.341  
 4.342  
 4.343  
 4.344  
 4.345  
 4.346  
 4.347  
 4.348  
 4.349  
 4.350  
 4.351  
 4.352  
 4.353  
 4.354  
 4.355  
 4.356  
 4.357  
 4.358  
 4.359  
 4.360  
 4.361  
 4.362  
 4.363  
 4.364  
 4.365  
 4.366  
 4.367  
 4.368  
 4.369  
 4.370  
 4.371  
 4.372  
 4.373  
 4.374  
 4.375  
 4.376  
 4.377  
 4.378  
 4.379  
 4.380  
 4.381  
 4.382  
 4.383  
 4.384  
 4.385  
 4.386  
 4.387  
 4.388  
 4.389  
 4.390  
 4.391  
 4.392  
 4.393  
 4.394  
 4.395  
 4.396  
 4.397  
 4.398  
 4.399  
 4.400  
 4.401  
 4.402  
 4.403  
 4.404  
 4.405  
 4.406  
 4.407  
 4.408  
 4.409  
 4.410  
 4.411  
 4.412  
 4.413  
 4.414  
 4.415  
 4.416  
 4.417  
 4.418  
 4.419  
 4.420  
 4.421  
 4.422  
 4.423  
 4.424  
 4.425  
 4.426  
 4.427  
 4.428  
 4.429  
 4.430  
 4.431  
 4.432  
 4.433  
 4.434  
 4.435  
 4.436  
 4.437  
 4.438  
 4.439  
 4.440  
 4.441  
 4.442  
 4.443  
 4.444  
 4.445  
 4.446  
 4.447  
 4.448  
 4.449  
 4.450  
 4.451  
 4.452  
 4.453  
 4.454  
 4.455  
 4.456  
 4.457  
 4.458  
 4.459  
 4.460  
 4.461  
 4.462  
 4.463  
 4.464  
 4.465  
 4.466  
 4.467  
 4.468  
 4.469  
 4.470  
 4.471  
 4.472  
 4.473  
 4.474  
 4.475  
 4.476  
 4.477  
 4.478  
 4.479  
 4.480  
 4.481  
 4.482  
 4.483  
 4.484  
 4.485  
 4.486  
 4.487  
 4.488  
 4.489  
 4.490  
 4.491  
 4.492  
 4.493  
 4.494  
 4.495  
 4.496  
 4.497  
 4.498  
 4.499  
 4.500  
 4.501  
 4.502  
 4.503  
 4.504  
 4.505  
 4.506  
 4.507  
 4.508  
 4.509  
 4.510  
 4.511  
 4.512  
 4.513  
 4.514  
 4.515  
 4.516  
 4.517  
 4.518  
 4.519  
 4.520  
 4.521  
 4.522  
 4.523  
 4.524  
 4.525  
 4.526  
 4.527  
 4.528  
 4.529  
 4.530  
 4.531  
 4.532  
 4.533  
 4.534  
 4.535  
 4.536  
 4.537  
 4.538  
 4.539  
 4.540  
 4.541  
 4.542  
 4.543  
 4.544  
 4.545  
 4.546  
 4.547  
 4.548  
 4.549  
 4.550  
 4.551  
 4.552  
 4.553  
 4.554  
 4.555  
 4.556  
 4.557  
 4.558  
 4.559  
 4.560  
 4.561  
 4.562  
 4.563  
 4.564  
 4.565  
 4.566  
 4.567  
 4.568  
 4.569  
 4.570  
 4.571  
 4.572  
 4.573  
 4.574  
 4.575  
 4.576  
 4.577  
 4.578  
 4.579  
 4.580  
 4.581  
 4.582  
 4.583  
 4.584  
 4.585  
 4.586  
 4.587  
 4.588  
 4.589  
 4.590  
 4.591  
 4.592  
 4.593  
 4.594  
 4.595  
 4.596  
 4.597  
 4.598  
 4.599  
 4.600  
 4.601  
 4.602  
 4.603  
 4.604  
 4.605  
 4.606  
 4.607  
 4.608  
 4.609  
 4.610  
 4.611  
 4.612  
 4.613  
 4.614  
 4.615  
 4.616  
 4.617  
 4.618  
 4.619  
 4.620  
 4.621  
 4.622  
 4.623  
 4.624  
 4.625  
 4.626  
 4.627  
 4.628  
 4.629  
 4.630  
 4.631  
 4.632  
 4.633  
 4.634  
 4.635  
 4.636  
 4.637  
 4.638  
 4.639  
 4.640  
 4.641  
 4.642  
 4.643  
 4.644  
 4.645  
 4.646  
 4.647  
 4.648  
 4.649  
 4.650  
 4.651  
 4.652  
 4.653  
 4.654  
 4.655  
 4.656  
 4.657  
 4.658  
 4.659  
 4.660  
 4.661  
 4.662  
 4.663  
 4.664  
 4.665  
 4.666  
 4.667  
 4.668  
 4.669  
 4.670  
 4.671  
 4.672  
 4.673  
 4.674  
 4.675  
 4.676  
 4.677  
 4.678  
 4.679  
 4.680  
 4.681  
 4.682  
 4.683  
 4.684  
 4.685  
 4.686  
 4.687  
 4.688  
 4.689  
 4.690  
 4.691  
 4.692  
 4.693  
 4.694  
 4.695  
 4.696  
 4.697  
 4.698  
 4.699  
 4.700  
 4.701  
 4.702  
 4.703  
 4.704  
 4.705  
 4.706  
 4.707  
 4.708  
 4.709  
 4.710  
 4.711  
 4.712  
 4.713  
 4.714  
 4.715  
 4.716  
 4.717  
 4.718  
 4.719  
 4.720  
 4.721  
 4.722  
 4.723  
 4.724  
 4.725  
 4.726  
 4.727  
 4.728  
 4.729  
 4.730  
 4.731  
 4.732  
 4.733  
 4.734  
 4.735  
 4.736  
 4.737  
 4.738  
 4.739  
 4.740  
 4.741  
 4.742  
 4.743  
 4.744  
 4.745  
 4.746  
 4.747  
 4.748  
 4.749  
 4.750  
 4.751  
 4.752  
 4.753  
 4.754  
 4.755  
 4.756  
 4.757  
 4.758  
 4.759  
 4.760  
 4.761  
 4.762  
 4.763  
 4.764  
 4.765  
 4.766  
 4.767  
 4.768  
 4.769  
 4.770  
 4.771  
 4.772  
 4.773  
 4.774  
 4.775  
 4.776  
 4.777  
 4.778  
 4.779  
 4.780  
 4.781  
 4.782  
 4.783  
 4.784  
 4.785  
 4.786  
 4.787  
 4.788  
 4.789  
 4.790  
 4.791  
 4.792  
 4.793  
 4.794  
 4.795  
 4.796  
 4.797  
 4.798  
 4.799  
 4.800  
 4.801  
 4.802  
 4.803  
 4.804  
 4.805  
 4.806  
 4.807  
 4.808  
 4.809  
 4.810  
 4.811  
 4.812  
 4.813  
 4.814  
 4.815  
 4.816  
 4.817  
 4.818  
 4.819  
 4.820  
 4.821  
 4.822  
 4.823  
 4.824  
 4.825  
 4.826  
 4.827  
 4.828  
 4.829  
 4.830  
 4.831  
 4.832  
 4.833  
 4.834  
 4.835  
 4.836  
 4.837  
 4.838  
 4.839  
 4.840  
 4.841  
 4.842  
 4.843  
 4.844  
 4.845  
 4.846  
 4.847  
 4.848  
 4.849  
 4.850  
 4.851  
 4.852  
 4.853  
 4.854  
 4.855  
 4.856  
 4.857  
 4.858  
 4.859  
 4.860  
 4.861  
 4.862  
 4.863  
 4.864  
 4.865  
 4.866  
 4.867  
 4.868  
 4.869  
 4.870  
 4.871  
 4.872  
 4.873  
 4.874  
 4.875  
 4.876  
 4.877  
 4.878  
 4.879  
 4.880  
 4.881  
 4.882  
 4.883  
 4.884  
 4.885  
 4.886  
 4.887  
 4.888  
 4.889  
 4.890  
 4.891  
 4.892  
 4.893  
 4.894  
 4.895  
 4.896  
 4.897  
 4.898  
 4.899  
 4.900  
 4.901  
 4.902  
 4.903  
 4.904  
 4.905  
 4.906  
 4.907  
 4.908  
 4.909  
 4.910  
 4.911  
 4.912  
 4.913  
 4.914  
 4.915  
 4.916  
 4.917  
 4.918  
 4.919  
 4.920  
 4.921  
 4.922  
 4.923  
 4.924  
 4.925  
 4.926  
 4.927  
 4.928  
 4.929  
 4.930  
 4.931  
 4.932  
 4.933  
 4.934  
 4.935  
 4.936  
 4.937  
 4.938  
 4.939  
 4.940  
 4.941  
 4.942  
 4.943  
 4.944  
 4.945  
 4.946  
 4.947  
 4.948  
 4.949  
 4.950  
 4.951  
 4.952  
 4.953  
 4.954  
 4.955  
 4.956  
 4.957  
 4.958  
 4.959  
 4.960  
 4.961  
 4.962  
 4.963  
 4.964  
 4.965  
 4.966  
 4.967  
 4.968  
 4.969  
 4.970  
 4.971  
 4.972  
 4.973  
 4.974  
 4.975  
 4.976  
 4.977  
 4.978  
 4.979  
 4.980  
 4.981  
 4.982  
 4.983  
 4.984  
 4.985  
 4.986  
 4.987  
 4.988  
 4.989  
 4.990  
 4.991  
 4.992  
 4.993  
 4.994  
 4.995  
 4.996  
 4.997  
 4.998  
 4.999  
 5.000



48

