

Site-Selective RNA Cleavage by DNA Bearing a Base Pair-Mimic Nucleoside

Shu-ichi Nakano, Yuuki Uotani, Kazuya Uenishi, Masayuki Fujii, and Naoki Sugimoto

Supporting Information

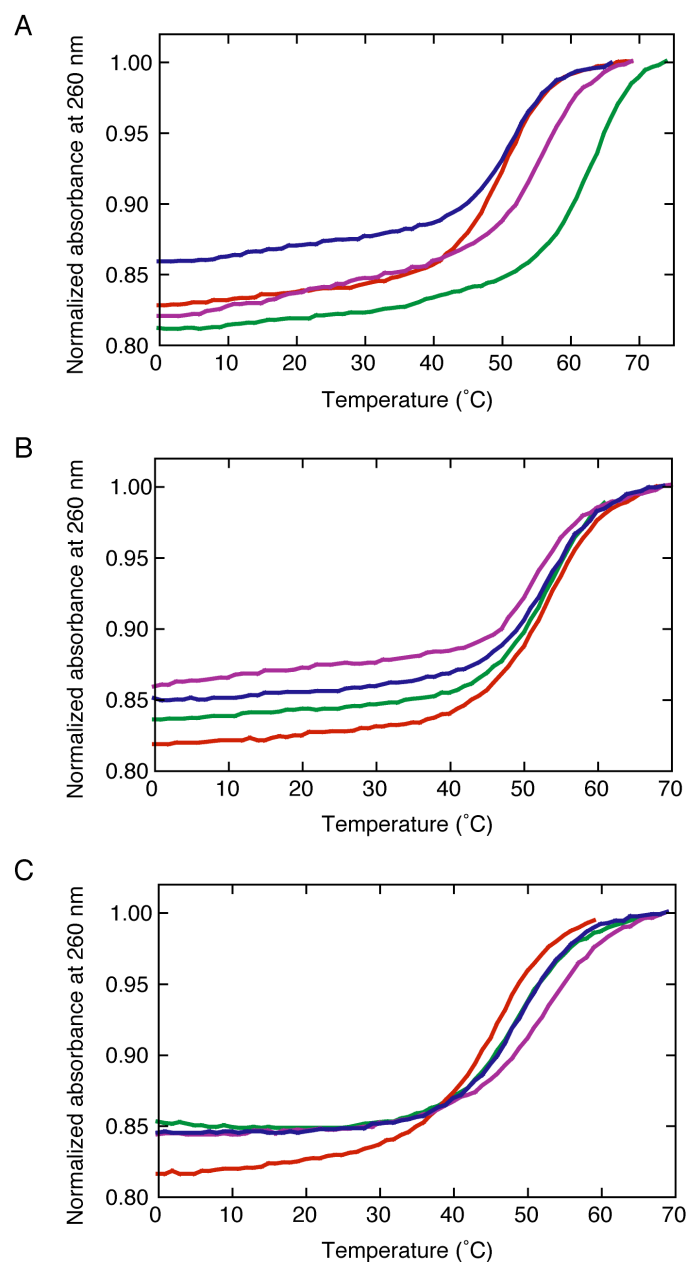


Figure S1. UV melting curves of the RNA/DNA duplexes when W_1 is (A) A, (B) X, or (C) Δ [W_2 = A (red), G (purple), C (blue), or U (green)]. All measurements were performed at 20 μ M in the 1 M NaCl-phosphate buffer.

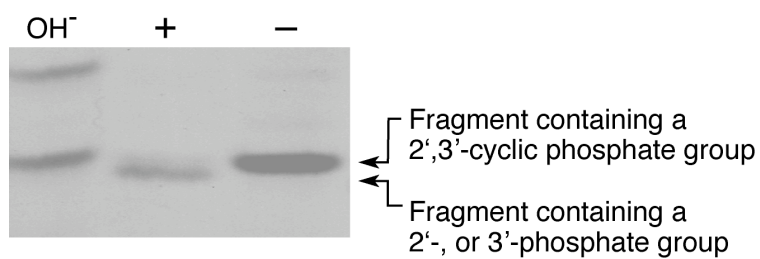


Figure S2. Comparison of the hydrolysis product bands before (-) and after (+) the acid treatment (100 mM HCl for 30 minutes).

Table S1. T_m values ($^{\circ}\text{C}$) of the RNA/DNA duplexes containing the W_1/W_2 pair measured at 1 M NaCl^a

W_1	W_2			
	A	G	C	U
A	50.1	55.7	51.1	63.0
X	53.2	52.9	52.4	52.6
Δ	45.4	50.9	48.7	48.2

^a T_m was measured at 20 μM in a buffer containing 1 M NaCl, 10 mM Na_2HPO_4 (pH 7.0), and 1 mM Na_2EDTA .