

Figure 3. Schematic of the CVD apparatus.

To verify that  $\text{H}_3\text{BO}_3$  is produced by exposing  $\text{BI}_3$  powder to humid air, 0.5g of  $\text{BI}_3$  powder is exposed to air (30% relative humidity and  $23^\circ\text{C}$ ) for more than 20 hours. X-ray diffraction (XRD, a Rigaku 2-circle diffractometer with  $\text{Cu K}\alpha$  radiation) is used to analyze the reaction product.

When  $\text{BI}_3$  powder is exposed to air (30% relative humidity and  $23^\circ\text{C}$ ), the faintly red powder of  $\text{BI}_3$  slowly loses its color. At the same time, a lot of gas comes out of the surface. After more than 20 hours, the  $\text{BI}_3$  powder turns into a white powder, with some brown deposition around the container in which the powder is located. Figure 4(a) shows a XRD pattern taken from the white powder, while Figure 4(b) shows a XRD pattern from  $\text{H}_3\text{BO}_3$  powder (99.999%, Aldrich). The great similarity between the two suggests that the white powder is  $\text{H}_3\text{BO}_3$ . It is well known that  $\text{BI}_3$  reacts with water violently to form  $\text{H}_3\text{BO}_3$  and  $\text{HI}$ <sup>16</sup>.  $\text{HI}$  is a gas at room temperature and reacts with  $\text{O}_2$  to form  $\text{H}_2\text{O}$  and  $\text{I}_2$ <sup>16</sup>. After a long reaction time (more than 20 hours), all the  $\text{BI}_3$  powder turns into  $\text{H}_3\text{BO}_3$  and  $\text{I}_2$ . Solid iodine is quite volatile even at room temperature<sup>16</sup>, so what is left is mainly  $\text{H}_3\text{BO}_3$  powder. If the exposure time of  $\text{BI}_3$  powder is short, for example 5 minutes, the originally pure  $\text{BI}_3$  powder turns into a mixed powder of  $\text{H}_3\text{BO}_3$ ,  $\text{I}_2$  and  $\text{BI}_3$ . Since  $\text{I}_2$  is volatile, the main composition of the mixed powder would be  $\text{H}_3\text{BO}_3$  and  $\text{BI}_3$ . Both  $\text{H}_3\text{BO}_3$  and  $\text{BI}_3$  have high vapor pressure at relatively low temperature, so it is

reasonable to believe that the vapor from the sublimator that contains  $\text{BI}_3/\text{H}_3\text{BO}_3$  powder is composed of  $\text{BI}_3$  and  $\text{H}_3\text{BO}_3$  vapor.

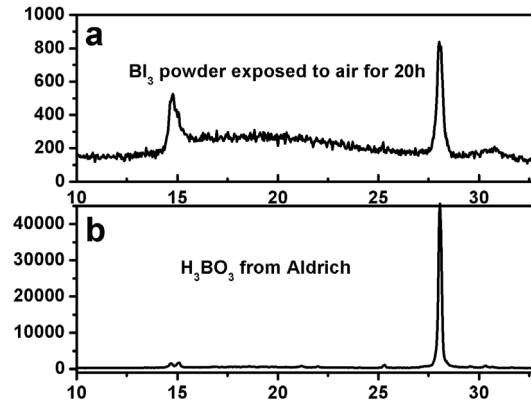


Figure 4(a) XRD pattern taken from the  $\text{BI}_3$  powder exposed to air (30% relative humidity,  $23^\circ\text{C}$ ) for more than 20 hours. (b) XRD pattern from  $\text{H}_3\text{BO}_3$  powder (99.999%, Aldrich).

To see if  $\text{Mg}_2\text{B}_2\text{O}_5$  nanowires can be produced using either pure  $\text{BI}_3$  or pure  $\text{H}_3\text{BO}_3$  powder as the sublimate source,  $\text{BI}_3$  or  $\text{H}_3\text{BO}_3$  (99.999%, Aldrich), instead of the mixed powder of  $\text{BI}_3/\text{H}_3\text{BO}_3$ , is placed in the sublimator.  $\text{BI}_3$  is transported into the sublimator inside a glove box to prevent it from reacting with  $\text{H}_2\text{O}$  vapor and  $\text{O}_2$  in air. The CVD deposition process and the structure characterization processes are then repeated. The results show that no nanowires are produced using pure  $\text{BI}_3$  or pure  $\text{H}_3\text{BO}_3$  powder as the sublimate source.

The device fabrication process is described briefly as following.  $\text{Mg}_2\text{B}_2\text{O}_5$  nanowires are first dispersed in isopropyl alcohol by sonication and then deposited onto a degenerately doped p-type silicon substrate capped with 500 nm oxide layer ((100), Silicon Valley Microelectronics). Coordinate markers are predefined on top of the  $\text{SiO}_2$  layer to mark the relative positions of the nanowires. Bilayer electron beam resists (PMMA&MMA/MAA) are spun onto the substrate, and the contact electrode patterns are

exposed by a JEOL electron beam writer operated at 50 KeV. After developing, Au/Ti (10 nm/110 nm thick) contacts to the nanowires are metallized by electron beam evaporation. Figure 5 shows an AFM (Digital Instrument, Multimode SPM) image of a nanowire with two contact electrodes. The nanowire channel length between the electrodes is 1.28  $\mu\text{m}$ . To improve the electrical contact, the sample was further loaded into a  $10^{-2}$  torr vacuum chamber and annealed for 1 hour at 500°C. But no essential change of conductance is observed.

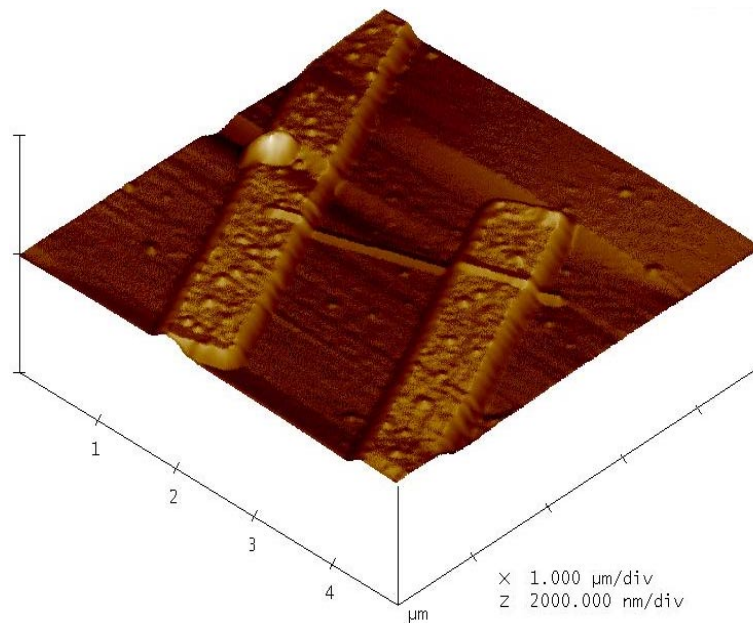


Figure 5. AFM image of a  $\text{Mg}_2\text{B}_2\text{O}_5$  nanowire contacted with Au/Ti electrodes. The diameter of the nanowire is 36 nm and the channel length between electrodes is 1.28  $\mu\text{m}$ .

**Reference:**

16. Holleman, A. F.; Wiberg, E. *Inorganic Chemistry*; Academic Press, 2001.